

1. SCOPE OF WORK

A “qualified licensed contractor” (hereinafter “Contractor”) shall furnish all labor, materials, equipment, component/devices, transportation, fuel, supervision, (permits, inspections) and all other incidentals necessary to complete all necessary work, all in accordance with all parts of this solicitation removing and replacing roof panels and Painting Scope of Work for the removal and replacement of the damaged, corroding roof panels and fascia. Replace with Americana Outdoors products (5 spec sheets) or approved equal and pressure washing, priming, and painting of the Observation Pavilion (Aztec 44’) at P.E.A.R Park – Wildlife Conservation Area located University Blvd. Leesburg, FL 34748.

2. BASE BID

Contractor to remove and replace the damaged / corroded roof panels & fascia then pressure wash, prime, & paint (2 coats of DTM – Direct to Metal paint and provide a complete turn-key project of the existing information pavilion including the posts, roof, railing, ceiling, and all other components.

- 2.1. ****Note:** Contractor to guarantee a “properly painted surface” See definition below.

Properly Painted Surface- A “properly painted surface” is one that is uniform in color and sheen. It is a surface that is free of foreign materials, lumps, skins, sags, misses, strike-through or insufficient coverage. It is one that is free of drips, spatters, spills or over spray which the contractor’s workforce may cause.

2.2. Pressure wash structure to remove dust, loose chalky paint, and mildew.

2.3. Apply one coat of high quality Direct to Metal (DTM) paint in a semi-gloss finish. (Sherman Williams DTM Alkyd Enamel) or approved equal.

2.4. Warranty: 7 years on paint by Sherman Williams (or approved equal), 3 years on labor.

2.5. Paint color (Terra Cotta) to be determined by the Office of Parks and Water Resources.

3. “EQUAL” PAINT PRODUCT CAN BE CONSIDERED

- 3.1. Vendors must submit any equivalent request product 2 weeks prior to bid opening. Failure to submit timely will make equivalent submittal non-responsive.

3.2. If a product or service requested has been identified in the specifications by a brand name and has not been notated as a “No Substitute” item, such identification is intended to be descriptive and not restrictive and is to indicate the quality and characteristics of product or service that will be acceptable. Vendors offering an alternate product will be considered for award if such product is clearly identified in the bid or proposal and is determined by the County to fully meet the salient characteristic requirements listed in the specifications. An alternate product will not be considered for any item notated “No Substitute”.

3.3. Unless the vendor clearly indicates in its bid or proposal that it is proposing an alternate product, the bid or proposal shall be considered as offering the same brand name referenced in the specifications.

3.4. If the vendor proposes to furnish an alternate product or service, the brand name of the product or service to be furnished shall be clearly identified. The evaluation of the bid or proposal and the determination as to acceptability of the alternate product or service shall be the responsibility of the County and will be based upon information furnished by the vendor. The County will not be responsible for locating or securing any information which is not included in the bid or proposal. To ensure that sufficient information is available, the vendor

shall furnish as part of the bid or proposal all descriptive material necessary for the County to determine whether the product offered meets the salient characteristics required by the specifications. Failure to do so may be considered a material deviation supportive of rejection of the bid.

4. COUNTY RESPONSIBILITIES

The County will provide an area for the Contractor to store equipment. The County is not responsible for theft of the Contractor's items.

4.1. Miscellaneous Items to Note:

- 4.1.1. The Contractor will be responsible for planning and providing perimeter site fencing and signage as required to ensure the safety and security of the site from the public, including park neighbors and visitors, children, and staff, during construction / painting project as well as after park hours. Park must remain open for public use during work.
- 4.1.2. Contractor is responsible for debris/trash management and must remove trash daily off County property.
- 4.1.3. Coordinate all work with Chris Macdonald (352) 460-2902, 48 hours prior to project starting at P.E.A.R Park Wildlife Conservation Area.

4.2. Acceptance

Lake County will review each installation to determine compliance prior to final acceptance of the work. Any painting work not completed in accordance with the plans and specifications and rejected by Lake County must be repaired and replaced at the Contractor's expense.

4.3. Cleaning

Perform cleaning during installation of the work and upon completion of the work. Remove from site all excess materials, soil, debris, and equipment. Any spoils created from this work must become the property of the Contractor and must be disposed of in a legal and proper manner.

4.4. Field Conditions

It is the responsibility of the Contractor to verify all site conditions before they submit their bid. Verify and coordinate all work to field locations and dimensions. Contractor is responsible for the installation of temporary construction fencing and signage to safely enclose the work area for the entire perimeter of site work if requested.

4.5. Installation

Installation must be in accordance with the terms and conditions in this request for Quotes, Construction Plans & Specifications provided under Reference Specification (Attached 5 sheets from manufacturer Americana Outdoors) and as stated in the Scope of Work.

All work must meet all applicable Federal, State, and local building codes and must be performed by qualified licensed Contractors in their respective areas (electrical, mechanical, plumbing, fire, etc.). The Contractor must complete all work per Construction Plans & Specifications. Paint color to be determined by the Office of Parks and Water Resources.

4.6. Lead Time

Any long lead item must be ordered within one (1) week of issuance of project purchase order. Proof of purchase will be required if requested.

4.7. **Product Handling**

Contractor is responsible for the proper packaging, shipping, handling, and storage of materials to be incorporated in the work, to ensure the preservation of the quality and fitness of the materials for proper installation as required by the contract documents. Deliver products to site in manufacturer's containers or packaging. Provide storage containers for material as necessary. Provide manpower and equipment to off load equipment at jobsite per scheduled delivery. Contractor must return all damaged products to manufacturer.

4.8. **Property Replacement**

Property at the site, including pavers, railings, concrete, pavement, asphalt, lime rock path, and fencing requiring movement during construction, or any other damage due to the work performed by contractor must be reinstalled, repaired, or replaced before final payment is made.

4.9. **Safety Precautions**

Contractor is responsible for initiating, maintaining, and supervising all safety precautions in connection with the work and applies throughout the contract term. The Contractor must erect and maintain all reasonable safeguards for safety and protection, including posting danger signs and other warning signs against hazards. It is the responsibility of the Contractor to provide a safe environment for park patrons and must monitor and maintain fencing/barricades to ensure continued safety.

4.10. **Use of Site**

Contractor must confine its operations at the site to areas permitted by law, ordinances and permits. The Contractor must not unreasonably encumber the site with materials, equipment, or trailers. Contractor shall not cause the entrance to be blocked or otherwise prevent reasonable access to the site, other working, and parking areas, completed portions of the work and/or properties and storage areas. The Contractor must be given twenty-four (24) hours' notice by the County representative to move the materials, equipment, or trailers at the Contractor's expense.

Note: Contractor be advised this is a wildlife / conservation area, the County will provide a construction entrance and work area for the project. The contractor cannot work outside the area provided by the County under no circumstance without the approval of the Office of Parks and Water Resources.

4.11. **Utilities**

Contractor is responsible for making appropriate contact to ensure utility locations have been marked prior to excavation and trenching. Call 811 before you dig (www.Sunshine811.com). The Contractor must protect all utilities (including irrigation) encountered while performing its work. The Contractor must exercise due care when excavating around utilities and must restore any damaged utilities, at its own expense, to the same condition or better as existed prior to start of work.

4.12. **Vendor Submittal**

Submit product data/specification to Office of Parks & Water Resources for review and approval of all items of work if requested. All submittals to be approved by Parks & Water Resources prior to Contractor delivering materials to job site.

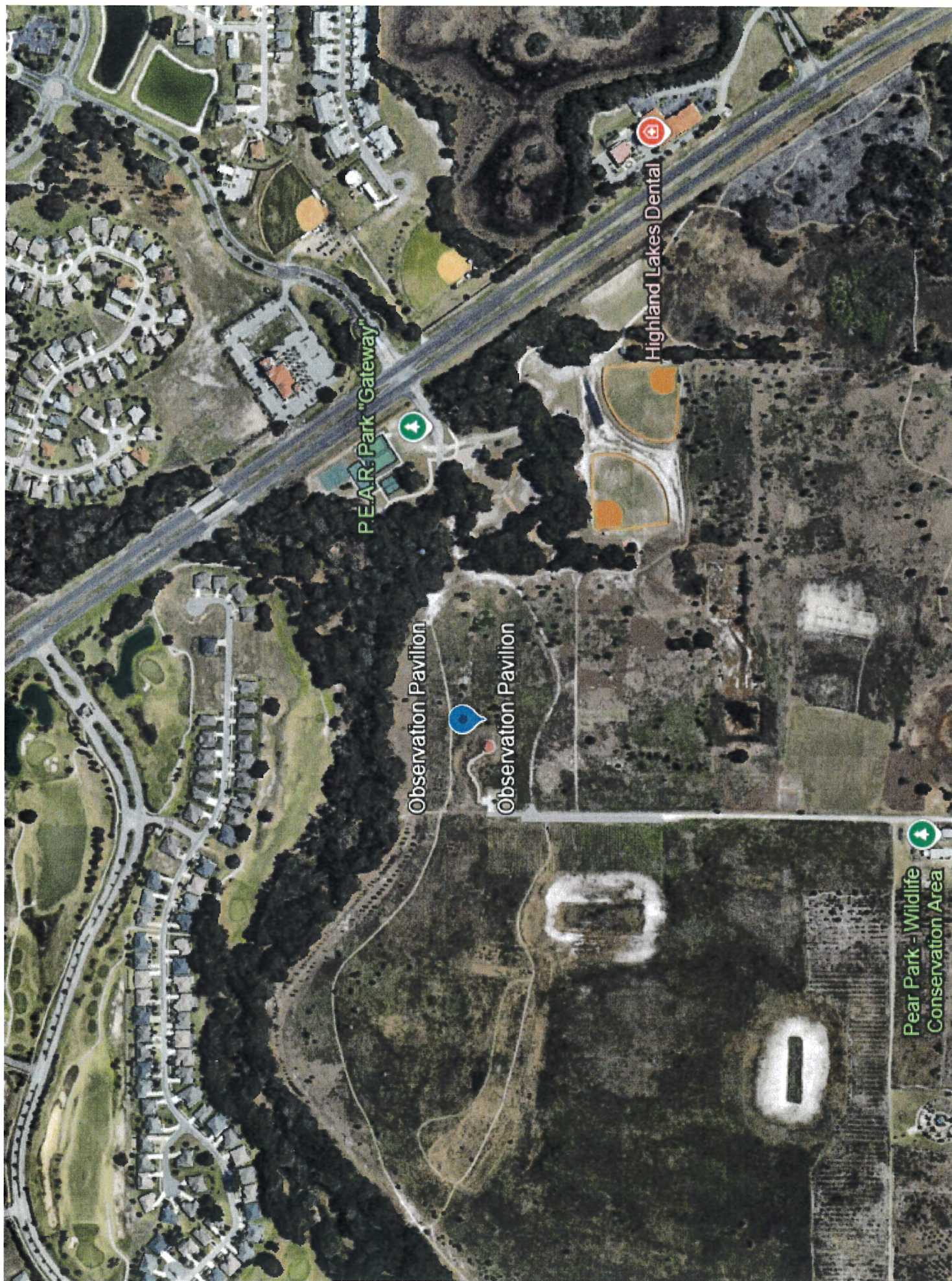
4.13. **Warranty and Guarantees**

Warranty requirements are per specification requirements. Contractor must furnish the Office of Parks & Water Resources with a signed minimum one (1) year warranty and maintenance program covering all systems for a minimum one (1) year from the date of final acceptance of the project by Lake County. The Contractor is responsible for securing warranties and guarantees for any materials, equipment, or fixtures to be incorporated into the project.

4.14. **Workmanship**

- 4.14.1. All furnishings described in this solicitation must be installed by qualified tradesman. All installation work and materials to be per manufacturer's specifications, or as directed by the Owner's Representative.
- 4.14.2. All work and materials are subject to the approval of the County.
- 4.14.3. All products must be inspected by the County for damage and chipped or marred finish. Contractor must replace any damaged or rejected products at no additional cost to the owner. The owner's representative may at his option authorize acceptance of chipped or scratched painted surfaces repaired by Contractor at his own risk.

[The remainder of this page is intentionally left blank.]



PEAR Park "Gateway"

Highland Lakes Dental

Observation Pavilion

Observation Pavilion

Pear Park - Wildlife
Conservation Area



PO Box 1290 • Salem IL 62881 • 1-800-851-0865

Aztec Specifications

PART 1 GENERAL

1.1. DESCRIPTION OF WORK

- A. Work in this section includes furnishing and installation of Aztec shelter as manufactured by Americana Building Products and as indicated on drawings.
- B. Aztec model shelter is four-sided with prefabricated structure, pre-cut roof panels, and hip roof.

1.2. RELATED ITEMS AND CONSIDERATIONS

- A. Concrete for shelter footings
 - 1. Standard models are surface mounted with anchor bolts. Buried post design available.
 - 2. Consider water drainage away from shelter where necessary.
 - 3. Any necessary removal or relocation of existing structure, obstructions, or materials.

1.3. FIELD MEASUREMENT

- A. Confirm field dimensions prior to preparation of shop drawings when possible
- B. If requested, supply manufacturer's standard literature and specifications for shelters.
- C. Shop drawings are available showing structural components locations/positions, material dimensions, and details of construction and assembly.

1.4. PERFORMANCE REQUIREMENTS

- A. Shelter must conform to local building codes. Standard models are designed to 115 miles per hour wind load and 20 pounds per square foot live load according to 2015 International Building Code (IBC) and American Society of Civil Engineers (ASCE) 7-10 design codes. Engineering available for custom load requirements.

1.5. DELIVERY, STORAGE, AND HANDLING

- A. Deliver and store all shelter components in protected areas

PART 2 PRODUCTS

2.1. MANUFACTURER

- A. Americana Building Products, #2 Industrial Drive, P.O. Box 1290, Salem Illinois 62881; 1-888-442-2928

2.2. MATERIALS

- A. Roof Panels

1. Aluminum 24" "W" Style Multi-Rib Panel
 - a) Aluminum Alloy 3004-H34
 - b) 2-1/2 tall, 24" wide interlocking design, Rib spacing 8" on center.
 - c) Thickness Available: .038"
2. Galvalume 24" "W" Style Multi-Rib Panel
 - a) ASTM A792, Grade 50 Galvalume Steel
 - b) 2-1/2 tall, 24" wide interlocking design, Rib spacing 8" on center
 - c) 24 Gauge Thickness
3. 18" Standing Seam Panel
 - a) ASTM A792, Grade 50 Galvalume Steel
 - b) 1-3/4 tall, 18" wide interlocking design
 - c) 24 Gauge Thickness
4. 8" Standing Seam Panel
 - a) Aluminum alloy 3105-H14
 - b) 2-3/4" tall, 8" wide interlocking design
 - c) Available thickness .032" and .038"
5. 36" Multi-Rib "R-Panel"
 - a) ASTM A792 Grade 50 Galvalume Steel
 - b) 1-1/4" TALL, 36" wide interlocking design, Rib spacing 12" on center
 - c) 26 Gauge

- A. Roof Panels Continued

6. Sub Roofing: Wood
 - a) Southern Yellow Pine or Western Red Cedar, #1 Grade or better
 - b) 2" x 6" nominal dimensions; 1-1/2" x 5-3/8", Actual Dimensions with 7/16" tongue and 1/2" groove
 - c) To be covered from one of Americana roof panel options using hidden fastener system
 - d) Can be covered by felt paper and shingles, or other conventional roofing (Supplied by Others)
- B. Perimeter Fascia
 1. Extruded Aluminum Gutter Fascia
 - a) 4-1/8" Tall by 3-1/2" deep
 - b) Aluminum alloy 6105-T6, .062" thickness
 - c) Standard perimeter, except for wood roofing and 36" Multi-Rib R-Panel
 2. Optional: Galvalume Formed Edge Trim
 - a) Standard for wood roofing and 36" Multi-Rib R-Panel
 - b) Available upon request
 - c) ASTM A792, Grade 50 Galvalume Steel, 24 Gauge thickness
 3. Extruded Ridge Cap
 - a) Standard except for wood roofing and 36" Multi-Rib R-Panel
 - b) Aluminum alloy 6105-T5, .094" thickness
- C. Structure
 1. ASTM A36 Steel Plate
 - a) Thickness determined by loading requirements
 2. ASTM A500, Grade B Hollow Structural Sections (HSS)
 - a) Standard posts, rafters, and ridge beam dimensions shall be 6" x 6" x 3/16", may vary according to loading requirements
 - b) Purlins size and thickness will vary according to loading requirements
 3. Welding shall conform to the requirements of the American Welding Society's specification on material being welded.
 - a) Welding electrodes shall be E70XX

2.3. ACCESSORIES

A. Fasteners

1. High strength bolts conform to ASTM A325
 - a) All bolts shall be hot dip galvanized
2. #12-24 and #8-18 hex washer head, self-drilling screws
 - a) All screws shall be stainless steel or coated with zinc

2.4. FINISHES – ROOF PANELS

A. Aluminum-baked enamel or Galvalume-baked enamel

1. Galvalume roof panels meet “Energy Star specification for cool roofs” reflecting coating to reflect heat away from the shelter

B. Standard colors available per manufacturer’s supplied chart unless otherwise stated.

1. Custom colors are available upon request.

2.5. FINISHES – ALUMINUM

A. All aluminum components are coated with a specially formulated super durable polyester triglycidyl isocyanurate (TGIC) powder and baked/cured at 400° F

B. This finish meets AAMA 2604-2 specification

2.6. FINISHES – STRUCTURE

A. Powder Coating – Standard Finish

1. All steel components are blasted to near-white condition. Components are cleaned in a 3-stage process. Precleaned with 1173 liquid alkaline cleaner, Rinsed with ambient fresh water, and a final rinse with a 2846 Non-Phosphate liquid conversion coating sealant. All chemicals used are non-toxic and do not contain regulated heavy metals, organic accelerators, or phosphates allowing for a more environmentally friendly footprint while providing a superior adhesion of powder.
2. Components are then coated with specially formulated super durable polyester triglycidyl isocyanurate (TGIC) powder and baked/cured at 400° F at 6 to 9 mils thick
3. This finish meets AAMA 2604-2 specification

- B. Optional: Premium Frame Finish – Zinc Primer
 - 1. Above powder coating is applied over a 2-3 mils zinc rich primer
- C. Optional: Hot Dip Galvanizing
 - 1. All steel components are hot dip galvanized per ASTM A123, then coated with above standard powder coating finish

2.7. FABRICATION

- A. Support posts shall be designed such that the posts will receive and secure the support beams
- B. Structural welds performed by AWS D1.1 certified welder. Welding inspector on staff.
- C. Decking shall be designed with interlocking members with mechanical fasteners
- D. Water shall drain from covered surfaces into integral gutter fascia perimeter and directed to ground level via scuppers on standard models. Vertical downspout assemblies are available.

PART 3 EXECUTION

3.1. INSPECTION

- A. Confirm that surround area is ready for the shelter installation
- B. Installer shall confirm dimensions and elevations to be as shown on drawings provided by Americana Outdoors
- C. Erection shall be performed by an experienced installer and scheduled after all concrete and masonry in the area are complete

3.2. INSTALLATION

- A. Installation shall be in strict accordance with manufacturer's shop drawings. General installation guidelines are supplied with each shelter
- B. All structural steel components are fully fabricated to eliminate the need for drilling, cutting, or welding on site
- C. Particular attention should be given to protecting the finish during handling and installation
- D. After installation, entire system should be left in a clean condition











