

## New Pickleball Fence / Court Resurface at P.E.A.R Park

### PART I – SCOPE OF WORK

- 1.01 Provide all labor, materials, equipment, fuel and other incidental costs and supervision necessary for furnishing, delivery and installation of one hundred & eighty (180) FT long X Eight (8) Ft high black vinyl 6 gauge, schedule 40 chain link fence (new), two (2) new entry gates & remove the existing post / nets, and redesign the installation of four (4) new posts / nets and resurface the courts to match the existing pickleball courts at P.E.A.R Park – 26701 U.S Hwy # 27 Leesburg, FL 34748. All work and equipment shall be in strict compliance with the latest codes, standards and practices.

#### Misc. Items to be noted:

- Contractor to coordinate with Chris Macdonald after issuance of purchase order. Work to be completed within 30 days of issuance of purchase order.
- The Contractors installation when completed, shall match all black vinyl coated chain link fence at Pear Park.
- All fencing to be installed as shown on attached plan from The Office of Parks and Trails direction.
- **Two New entry gates each four (4) FT Wide X eight (8) FT High black vinyl coated 6 gauge, schedule 40 chain link. Relocate the 2 existing gates to match the updated fence design and repair / replace all fencing that has been altered from the new design.**
- Machine sand all surfaces, repair holes & foundation using patch mix to level up to existing surface.
- Crack repair on all cracks using crack filler or other approved product.
- Pull down bad seams with surfacer before coating system starts.
- Apply two (2) coats with acrylic re-surfacer over entire slab with heavy sand.
- Apply two (2) coats of latex acrylic color with sand over entire slab.
- Re-stripe courts to regulation specifications.
- **Must submit color sample for approval.**

#### Fence details for 8 FT High Fencing:

8' High Black Vinyl Coated 6 gauge-schedule 40 chain link fence is required. Steel Chart for schedule of sizes of members is as follows:

- Height of fence - 8 FT
- Diameter of line posts – 2 ½"
- Post spacing Max - 8 FT
- Corner & end post - 3" diameter
- Top, Middle and Bottom Rail –1 5/8" diameter

- Depth of post into footing ( line post & end / gate/ corner post ) - 1FT 8 INCH.
- Diagonal Braces – ½ "diameter
- Mesh to be placed on the outside of the fencing.
- Tie wire, #6 W & M gauge aluminum ties @ 15 o.c. for rails. Ties are to be 12" apart on posts. End of ties should be wound in a telegraph, trust 2½ turns. Horizontal braces at corner & End posts 1 5/8".

#### 1.02 FIELD CONDITIONS:

- A. Verify and coordinate all work to field locations and dimensions.

### **PART II – PRODUCTS**

2.01 MATERIALS: Provide products as specified herein.

### **PART III – EXECUTION**

#### 3.01 WORKMANSHIP:

- A. All furnishings described herein shall be installed by qualified tradesman. All installation work and materials to be per manufacturer's specifications, or as directed by the Owner's Representative.
- B. All work and materials are subject to the approval of the County.

#### 3.1.1 INSTALLATION:

- A. Install furnishing in locations as indicated on the plans and details. Assure that all furnishings are installed plumb and level and in accordance with the plans and details.

#### 3.2 ACCEPTANCE

- A. Any work not installed in accordance with the specifications and rejected by the County shall be removed and replaced at the Contractor's expense.

#### 3.4 CLEANING

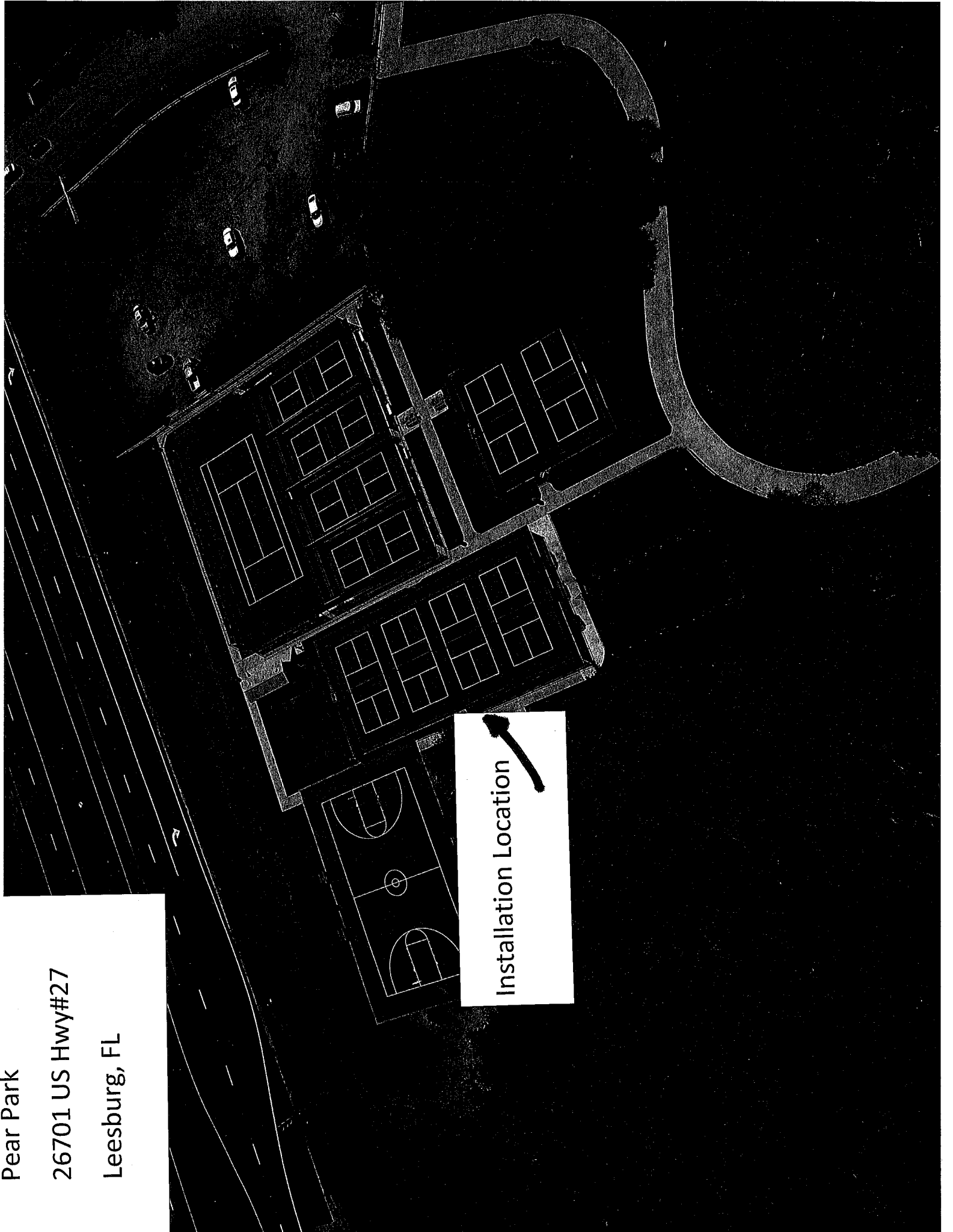
- A. Perform cleaning during installation of the work and upon completion of the work. Remove from site all excess materials, soil, debris, and equipment.

Pear Park

26701 US Hwy#27

Leesburg, FL

Installation Location



PIPE SCHEDULE

HEIGHT OF FENCE	WIDTH OF BOTTOM FABRIC	WIDTH OF TOP FABRIC
3'-6" - 4'-0"	3'-6" - 4'-0"	0
6'-0"	6'-0"	0
8'-0"	8'-0"	0
10'-0"	10'-0"	0
12'-0"	8'-0"	4'-0"
14'-0"	10'-0"	4'-0"
16'-0"	10'-0"	6'-0"
18'-0"	10'-0"	8'-0"
20'-0"	10'-0"	10'-0"

NOMINAL OUTSIDE DIAMETER	ACTUAL OUTSIDE DIAMETER
1 1/2"	1.660
2"	2.375
2 1/2"	2.875
3"	3.500
3 1/2"	4.000
4"	4.500
4 1/2"	5.000

BOLT AND FABRIC NOTES

PEEN END OF ALL BOLTS.

BOLTS WHICH ARE INSTALLED 6' OR LESS ABOVE GRADE SHALL NOT PROTRUDE MORE THAN 1/4" BEYOND THE NUT AFTER TIGHTENING. ALL ROUGH EDGES SHALL BE FILED SMOOTH TO THE SATISFACTION OF THE ENGINEER.

ON FENCES OVER 12 FEET HIGH WHERE THE TWO WIDTHS OF FABRIC ARE REQUIRED, THE BOTTOM PIECE SHALL BE KNUCKLED TOP AND BOTTOM AND THE TOP PIECE KNUCKLED AT BOTTOM AND BARBED AT TOP.

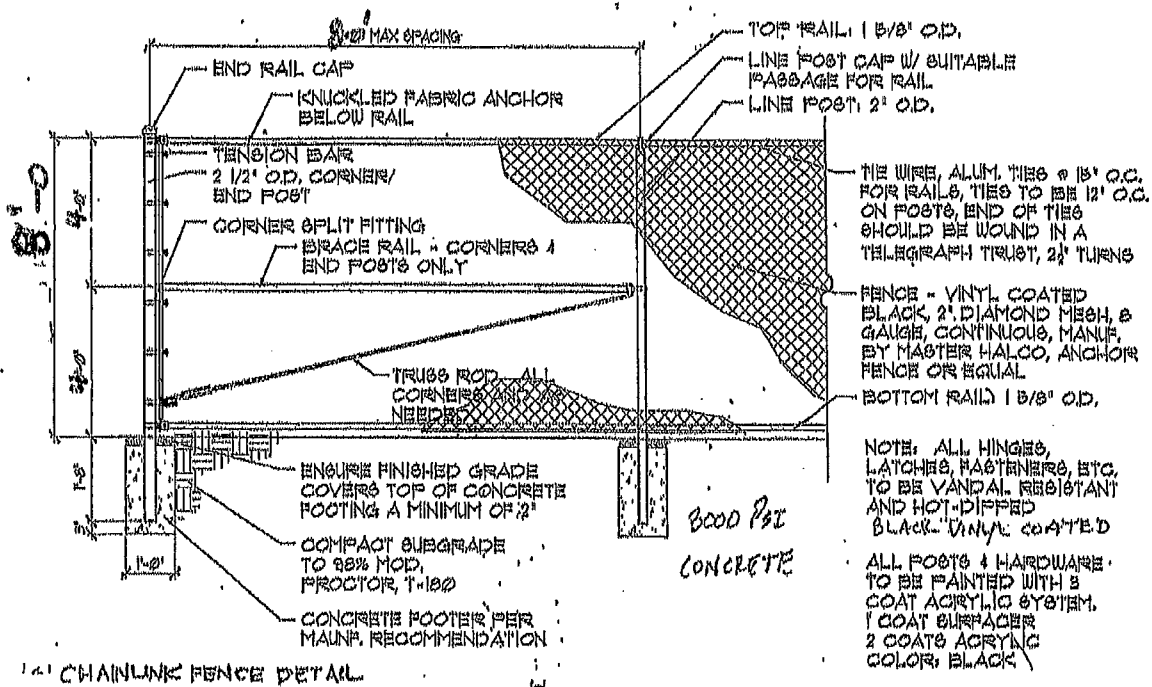
THE TWO PIECES SHALL BE SPLICED IN SUCH A WAY AS TO GIVE A FINISHED NEAT APPEARANCE.

FABRIC TO BE KNUCKLED AT TOP AND BOTTOM RAILS ON FENCES UP TO AND INCLUDING 6'-0" HIGH AND BARBED AT TOP RAIL ON FENCES OVER 6'-0" HIGH.

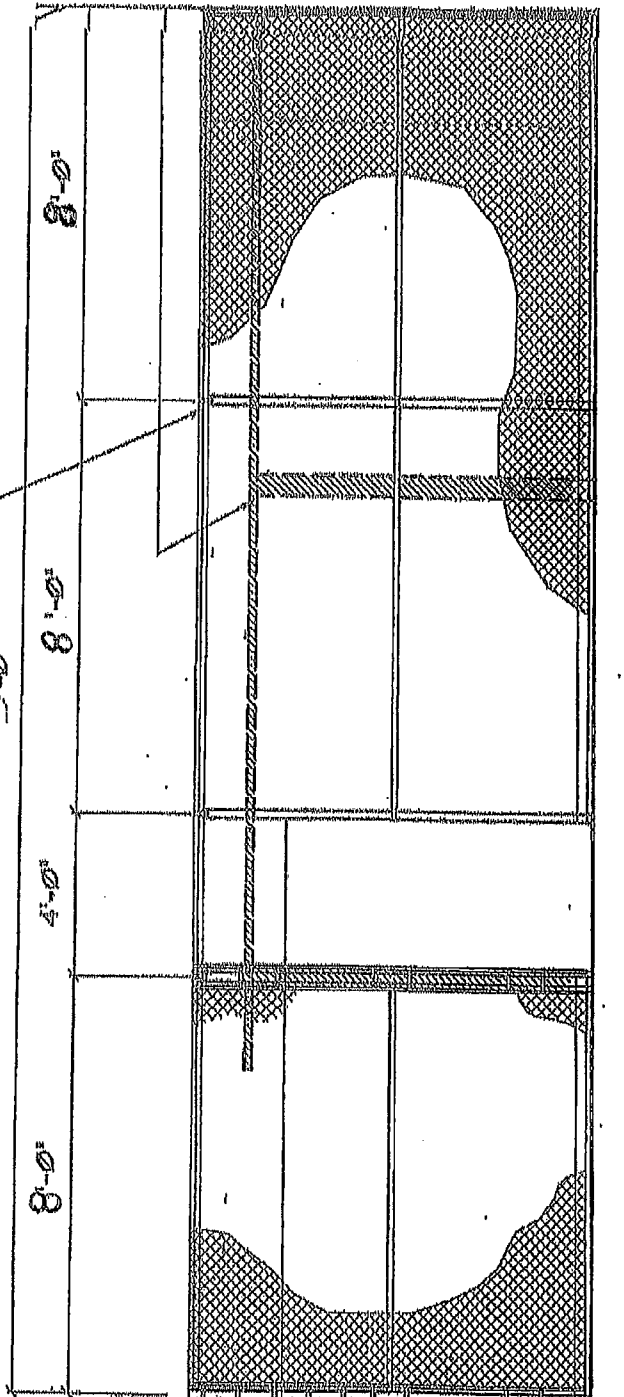
SCHEDULE OF SIZES OF MEMBERS - AS PER ASTM A 53, ALL SIZES NPS

HEIGHT OF FENCE	DIAMETER OF LINE POSTS	POST SPACING MAXIMUM	CORNER & END POST	TOP RAIL	MID RAILS	BOTTOM RAIL	DEPTH OF POST INTO CURB AND FTG AT:		HORIZONTAL BRACES AT CORNER & END POST	DIAGONAL BRACES
							LINE POST	END/CORNER GATE POST		
3'-6" & 4'-0"	2"	6'-0"	2 1/2"	1 1/2"	0	1 1/2"	1'-0"	1'-0"	0	0
6'-0"	2"	6'-0"	2 1/2"	1 1/2"	0	1 1/2"	1'-8"	1'-8"	0	1/2" DIA.
8'-0"	2 1/2"	8'-0"	3"	1 1/2"	0	1 1/2"	1'-8"	1'-8"	1 AT 1 1/2"	1/2" DIA.
10'-0"	3"	10'-0"	4"	1 1/2"	1 - 1 1/2"	1 1/2"	3'-2"	3'-2"	2 AT 1 1/2"	1/2" DIA.
12'-0"	3"	10'-0"	4"	1 1/2"	1 - 1 1/2"	1 1/2"	3'-2"	4'-2"	2 AT 1 1/2"	1/2" DIA.
14'-0"	3 1/2"	10'-0"	4"	1 1/2"	2 - 1 1/2"	1 1/2"	3'-2"	4'-2"	2 AT 1 1/2"	1/2" DIA.
16'-0"	3 1/2"	10'-0"	4"	1 1/2"	2 - 1 1/2"	1 1/2"	3'-2"	4'-2"	2 AT 1 1/2"	1/2" DIA.
18'-0"	3 1/2"	10'-0"	4"	1 1/2"	2 - 1 1/2"	1 1/2"	3'-2"	4'-2"	2 AT 1 1/2"	1/2" DIA.
20'-0"	4 1/2"	10'-0"	4 1/2"	1 1/2"	3 - 1 1/2"	1 1/2"	4'-2"	4'-6"	3 AT 1 1/2"	1/2" DIA.

WIRE FABRIC NOTES



3" O.D.  
POST FOR 10 FT. FENCING, TYP.



3" O.D.  
STEEL END POST  
FOR 8' HIGH  
FENCING, TYP.

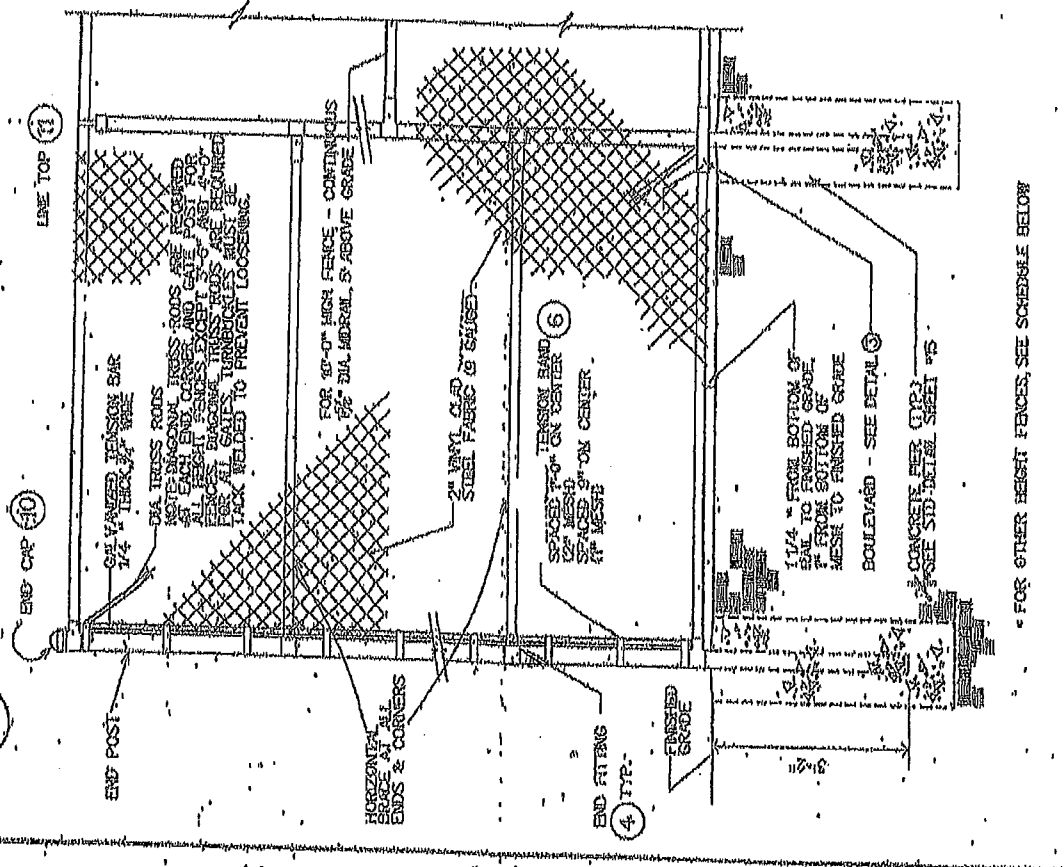
8' FT. HIGH  
FENCING  
SEE DETAIL

2  
SD-5

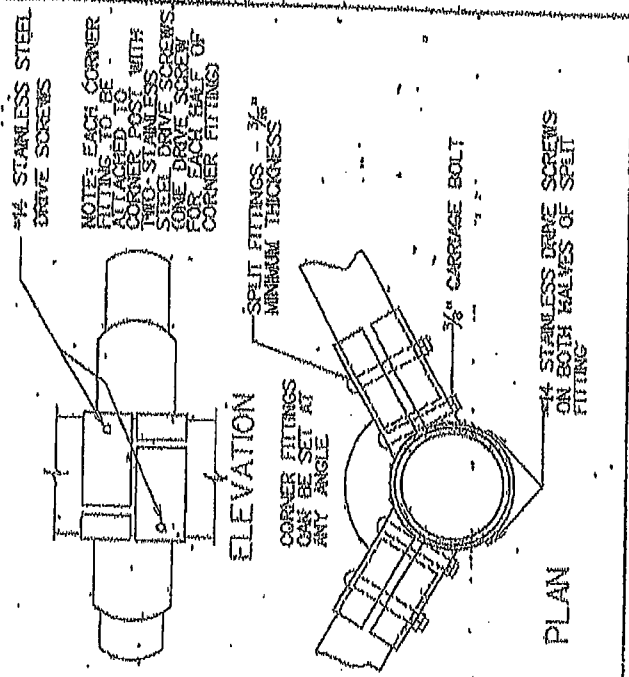
GRADE

1 CHAIN LINK FENCE  
SD-5 14' = 1'-0"

**1** 8'-0" HIGH CHAIN LINK FENCE  
SCALE: 1/4" = 1'-0"

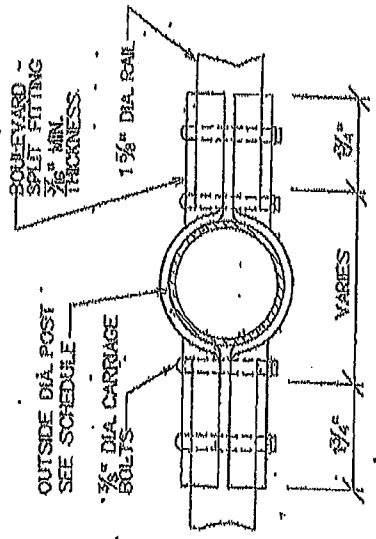


**2** CORNER FITTING  
SCALE: HALF SIZE



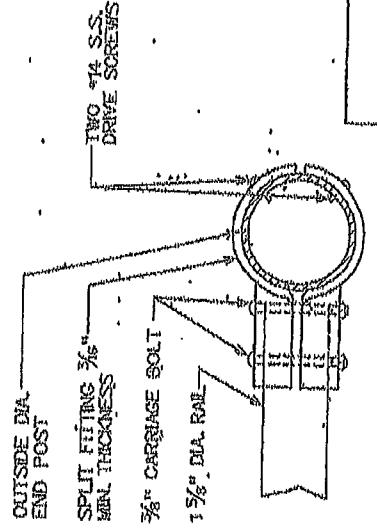
FOR OTHER HEIGHT FENCES, SEE SCHEDULE BELOW

**3** BOULEVARD  
SCALE: HALF SCALE



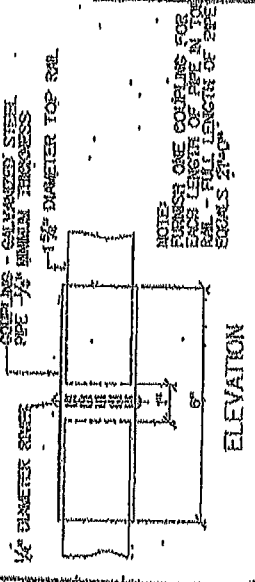
NOTE: ALL CORNERS TO BE ROUNDED  
 PLAN  
 A-3/4" FOR 2" - 4 1/2" O.D. POST  
 B-1 1/8" FOR 2" O.D. OR SMALLER POST  
 C-2 1/2" NOM. O.D. OR LARGER - 2 BOLTS REQUIRED

**4** END FITTING  
SCALE: HALF SCALE



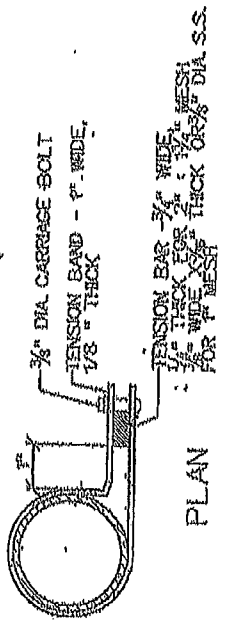
NOTE: MINIMUM WIDTH OF END FITTING TO BE 2 1/4"

**5** TOP RAIL COUPLING  
SCALE: HALF SCALE

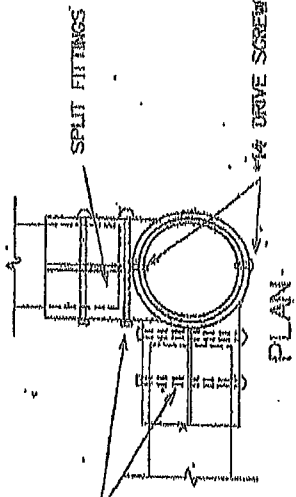
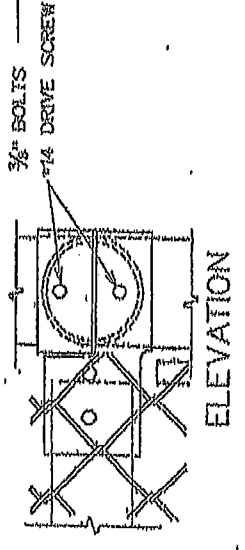


NOTE: FURNISH ONE COUPLING FOR EACH LENGTH OF PIPE IN TOP RAIL - FULL LENGTH OF PIPE SIGNALS 2'-0"

**6** TENSION MEMBERS  
SCALE: HALF SCALE



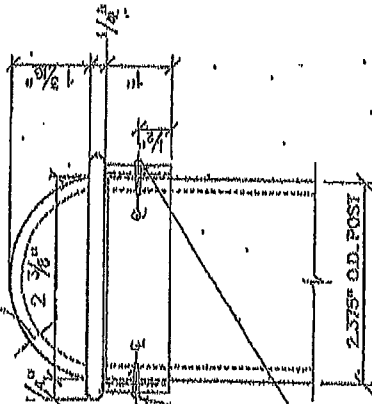
**7** CORNER SPLIT FITTING  
SCALE: 3"=1'-0"





**8** SMALL POST CAP  
SCALE: FULL SCALE

WALL THICKNESS  $\frac{3}{16}$ " THROUGHOUT

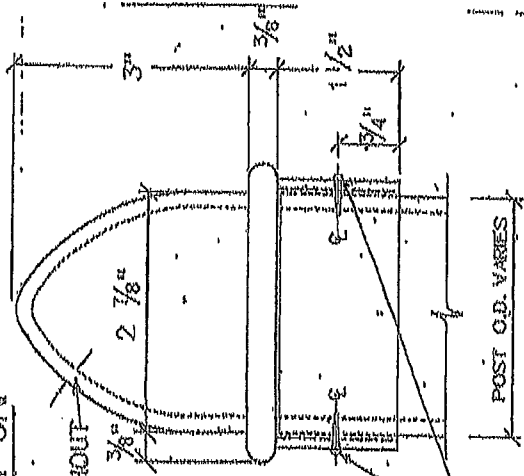


NOTE: POST CAP IS TO BE OF MALLEABLE IRON OR PRESSED STEEL CAP TOP FOR 3'-0" AND 4'-0" HIGH FENCE TO BE A SMOOTH FINISH. SHARP CORNERS FOR FENCES, POINT CAPS FOR BOLLARDS, OR "BULLET" SHAPED.

POST CAP IS TO FIT SNIUGLY OVER POST AND IS TO BE FIXED IN PLACE WITH TWO  $\frac{1}{4}$ " STAINLESS STEEL DRIVE OR SET SCREWS.

**9** END, CORNER, & GATE POST CAP  
SCALE: FULL SCALE

WALL THICKNESS  $\frac{3}{16}$ " THROUGHOUT



NOTE: POST CAP IS TO BE OF MALLEABLE IRON.

FOR 4" OUTSIDE DIAMETER POST POST CAP SHALL POSSESS DIMENSIONS THAT ARE IN PROPORTION TO DIMENSIONS BELOW FOR 2 1/2" OUTSIDE DIAMETER POST CAP.

CAP TOPS FOR 3" OUTSIDE DIA AND 4" OUTSIDE DIA POSTS ARE TO POSSESS A SMOOTH "BULLET" SHAPE FOR 2 1/2" OUTSIDE DIA POST CAP. SEE DETAIL 9.

POST CAP IS TO FIT SNIUGLY OVER POST AND IS TO BE FIXED IN PLACE WITH TWO  $\frac{1}{4}$ " STAINLESS STEEL DRIVE OR SET SCREWS.

**10** POST LINE TOP  
SCALE: FULL SCALE

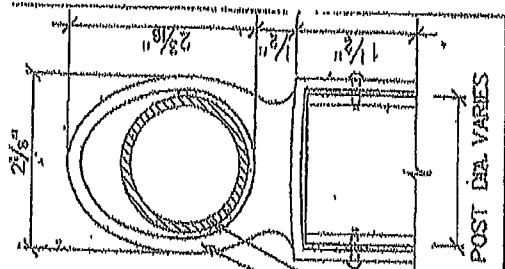
NOTE: WIDTH OF LINE TOP OVAL TO BE MINIMUM OF  $\frac{1}{2}$ " AND A MAXIMUM OF  $\frac{3}{4}$ ". LINE TOP IS TO BE OF MALLEABLE IRON.

INSIDE OF LINE TOP OVAL IS TO BE ALIGNED WITH OUTSIDE WALL OF LINE POST. CHAIN LINK MESH MUST BE STRAPPED FROM LINE POST TO TOP RAIL.

WALL THICKNESS TO BE  $\frac{3}{16}$ " THROUGHOUT

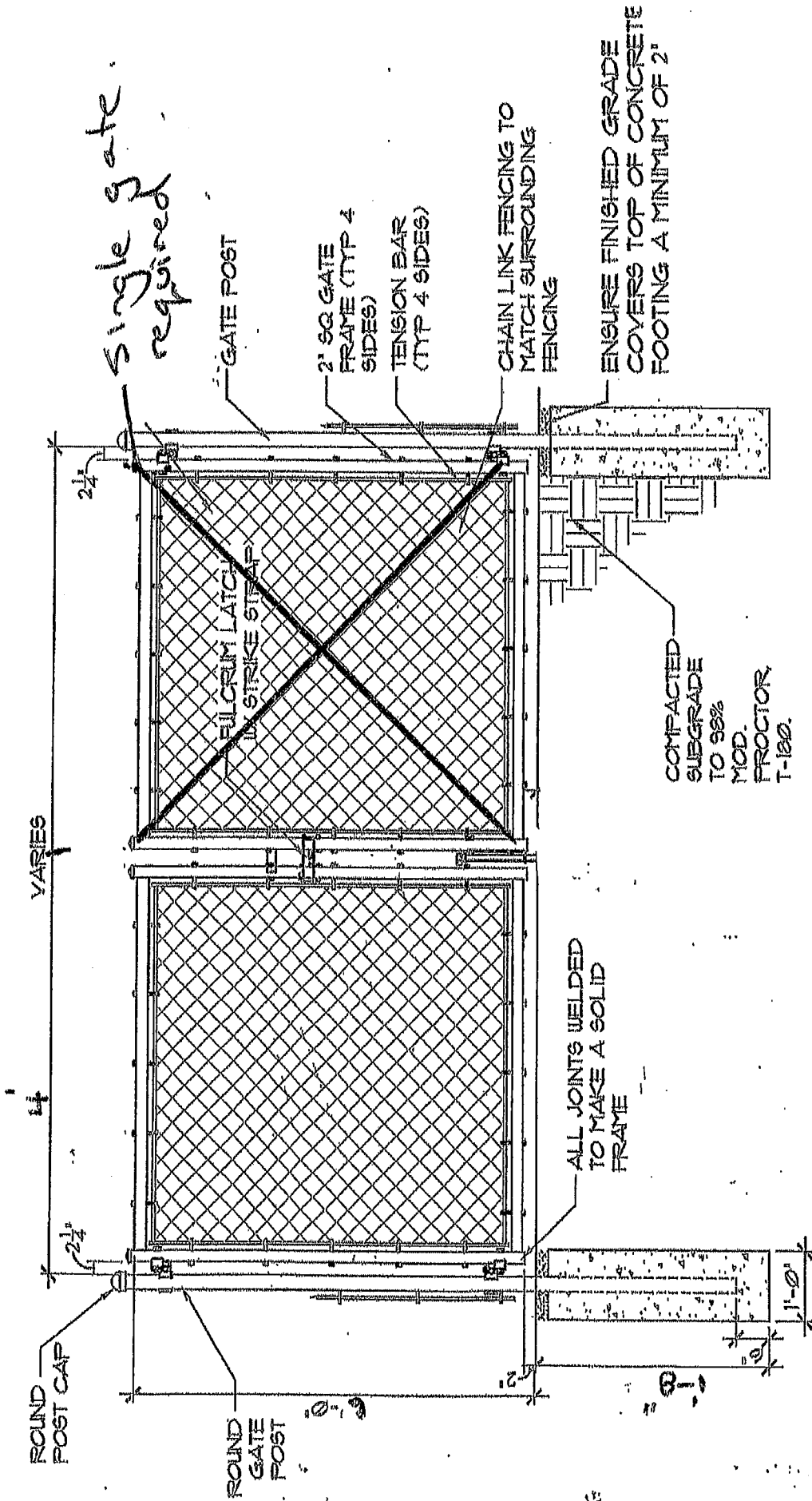
1 5/8" DIA. TOP RAIL

POST CAP IS TO FIT SNIUGLY OVER POST AND IS TO BE FIXED IN PLACE WITH TWO  $\frac{1}{4}$ " SET SCREWS.



SAMPLE ONLY - GATES TO MATCH EXISTING GATES

FILE NAME: FENCE-DD-TIS



4  
SD-1

3  
SD-5  
CHAIN LINK GATE DETAIL  
1/2" = 1'-0"

FILE NAME: fence gate