

New Boundary Fence at the Minneola Athletic Complex

- 1.01 SCOPE OF WORK: Provide all labor, materials, equipment, fuel and other incidental costs and supervision necessary for furnishing, delivery and installation of approximately two hundred & sixty (260) FT of Six (6) FT. High black vinyl coated 6 gauge-schedule 40 chain link fence by the basketball courts at the Minneola Athletic Complex – 1300 Fosgate Rd. (13930 Education Ave) Minneola, FL 34715. All work and equipment shall be in strict compliance with the latest codes, standards and practices.

Misc. Items to be noted:

- Field verification by Contractor is recommended
- The contractor's installation, when complete, shall match the existing black vinyl coated chain link outfield fence.
- All fencing to be installed as shown on attached plan.
- Site preparation will be required
- One (1) gate – 4 FT wide X 6 FT high black vinyl coated chain link
- **All gate hardware included with this bid (See attached gate detail)**
- **Final location of fence and gates to be determined by the Office of Parks and Trails**

Fence details for 6'FT High Fencing:

6'FT High Black Vinyl Coated 6 gauge- schedule 40 chain link fence is required. Steel Chart for schedule of sizes of members is as follows:

- Height of fence- 6' FT
- Diameter of line posts- 2" INCH
- Post spacing Max- 6' FT
- Corner & End posts- 2 ½" INCH
- **Top, Middle & Bottom Rail- 1 5/8" INCH**
- Depth of post into curb & footing (line post & end/ gate/ corner post)- 1'FT 8" INCH

Submit shop drawings, catalog cuts & samples for all fields including accessories. Mesh to be placed on the inside of the fencing.

- Tie-wire, #6 W & M gauge aluminum ties @ 15" INCH o.c. for rails. Ties to be 12' INCH apart on posts. End of ties should be wound in a **telegraph twist, 2 ½ turns.**

1.02 SUBMITTALS:

- A. Submit product samples to the Office of Park and Trails for review and approval of all items of work.
- B. All submittals to be approved by the Office of Parks and Trails prior to contractor delivering materials to site.

1.03 FIELD CONDITIONS: Verify and coordinate all work to site locations and dimensions.

PART III – EXECUTION

1.04 WORKMANSHIP:

- A. All furnishings described herein shall be installed by qualified tradesman. All installation work and materials to be per manufacturer's specifications, or as directed by the Owner's Representative.
- B. All products shall be inspected by the County for damage and chipped or marred finish. Contractor shall replace any damaged or rejected products at no additional cost to the owner. The owner's representative may at his option authorize acceptance of chipped or scratched painted surfaces repaired by contractor at his own risk.

1.05 INSTALLATION

- A. Install furnishing in locations as indicated on the plans and details. Assure that all furnishings are installed plumb and level and in accordance with the plans and details.

1.06 GUARANTEES

- A. The contractor shall furnish warranties in writing certifying that the quality and workmanship of all materials and installation furnished is in accordance with these specifications and in accordance with the original manufacturers' warranties. The contractor shall warrant the installation workmanship for a period of one year from the date of final acceptance of the job, or any accepted portion of the job.

1.07 CLEANING

- A. Perform cleaning during installation of the work and upon completion of the work. Remove from site all excess materials, soil, debris, and equipment.

FABRIC WIDTHS

PIPE SCHEDULE

HEIGHT OF FENCE	WIDTH OF BOTTOM FABRIC	WIDTH OF TOP FABRIC
3'-6" - 4'-0"	3'-6" - 4'-0"	0
6'-0"	8'-0"	0
8'-0"	8'-0"	0
10'-0"	10'-0"	0
12'-0"	8'-0"	4'-0"
14'-0"	10'-0"	4'-0"
16'-0"	10'-0"	8'-0"
18'-0"	10'-0"	8'-0"
20'-0"	10'-0"	10'-0"

NOMINAL OUTSIDE DIAMETER	ACTUAL OUTSIDE DIAMETER
1 1/2"	1.600
2"	2.375
2 1/2"	2.875
3"	3.500
3 1/2"	4.000
4"	4.500
4 1/2"	5.060

BOLT AND FABRIC NOTES

PEEN END OF ALL BOLTS.

BOLTS WHICH ARE INSTALLED 6' OR LESS ABOVE GRADE SHALL NOT PROTRUDE MORE THAN 1/4" BEYOND THE NUT AFTER TIGHTENING. ALL ROUGH EDGES SHALL BE FILED SMOOTH TO THE SATISFACTION OF THE ENGINEER.

ON FENCES OVER 12 FEET HIGH WHERE THE TWO WIDTHS OF FABRIC ARE REQUIRED, THE BOTTOM PIECE SHALL BE KNUCKLED TOP AND BOTTOM AND THE TOP PIECE KNUCKLED AT BOTTOM AND BARBED AT TOP.

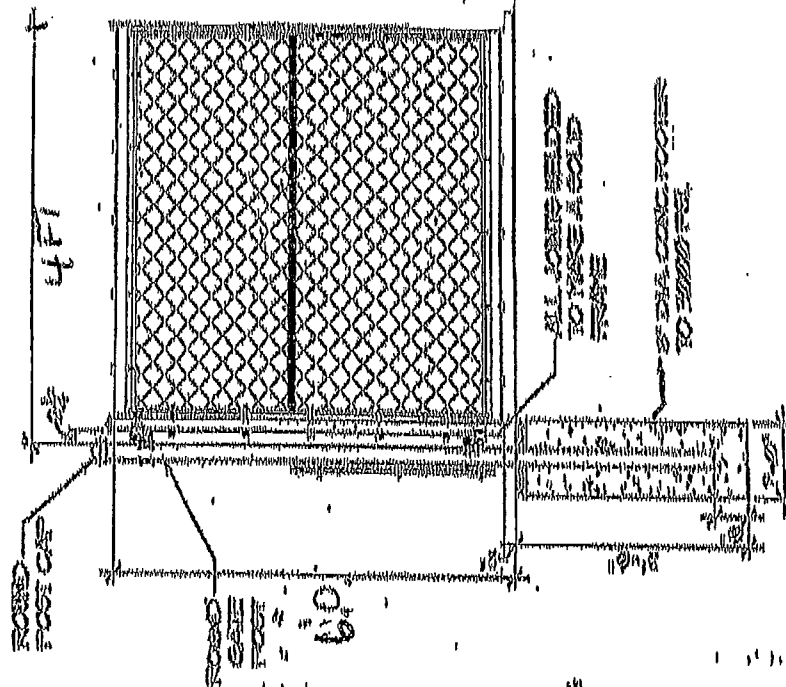
THE TWO PIECES SHALL BE SPLICED IN SUCH A WAY AS TO GIVE A FINISHED NEAT APPEARANCE.

FABRIC TO BE KNUCKLED AT TOP AND BOTTOM RAILS ON FENCES UP TO AND INCLUDING 6'-0" HIGH AND BARBED AT TOP RAIL ON FENCES OVER 6'-0" HIGH.

SCHEDULE OF SIZES OF MEMBERS - AS PER ASTM A 53, ALL SIZES NPS

HEIGHT OF FENCE	DIAMETER OF LINE POSTS	POST SPACING MAXIMUM	CORNER & END POST	MID RAIL RAIL	BOTTOM RAIL	DEPTH OF CURB AND FTG AT:	END/CORNER GATE POST	HORIZONTAL BRACES AT CORNER & END POST	DIAGONAL BRACES
3'-6" - 4'-0"	2"	6'-0"	2 1/2"	0	1 1/2"	1'-0"	1'-0"	0	0
6'-0"	3"	6'-0"	3 1/2"	1 1/2"	1 1/2"	1'-2"	1'-2"	0	1/2" DIA.
8'-0"	2 1/2"	8'-0"	3"	0	1 1/2"	1'-8"	1'-8"	1 AT 1 1/2"	1/2" DIA.
10'-0"	3"	10'-0"	4"	1 - 1 1/2"	1 1/2"	3'-2"	3'-2"	2 AT 1 1/2"	1/2" DIA.
12'-0"	3"	10'-0"	4"	1 - 1 1/2"	1 1/2"	3'-2"	3'-2"	2 AT 1 1/2"	1/2" DIA.
14'-0"	3 1/2"	10'-0"	4"	2 - 1 1/2"	1 1/2"	3'-2"	3'-2"	2 AT 1 1/2"	1/2" DIA.
16'-0"	3 1/2"	10'-0"	4"	2 - 1 1/2"	1 1/2"	3'-2"	3'-2"	2 AT 1 1/2"	1/2" DIA.
18'-0"	3 1/2"	10'-0"	4"	2 - 1 1/2"	1 1/2"	3'-2"	3'-2"	2 AT 1 1/2"	1/2" DIA.
20'-0"	4 1/2"	10'-0"	4 1/2"	3 - 1 1/2"	1 1/2"	4'-2"	4'-2"	3 AT 1 1/2"	1/2" DIA.

WIRE FABRIC NOTES



EXISTING FINISHED GRADE
COVERS TOP OF CONCRETE
FOOTING A MINIMUM OF 2'

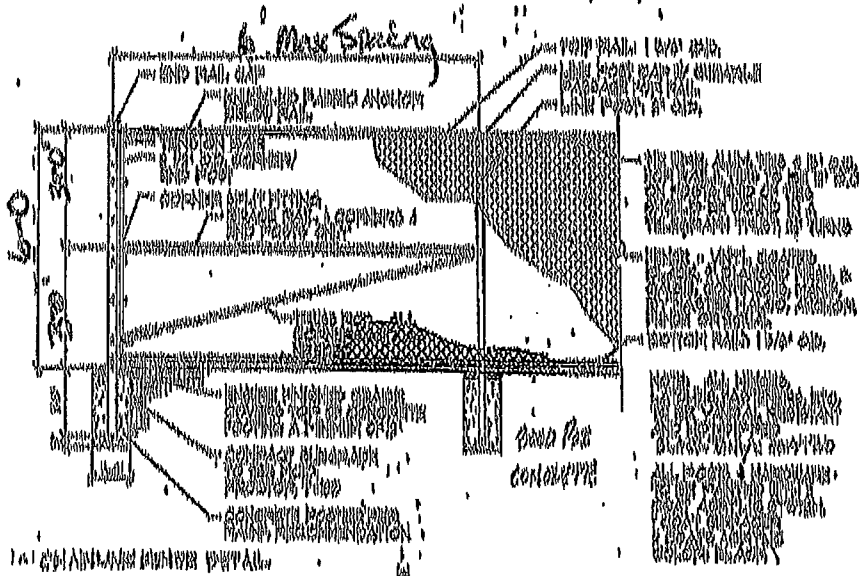
Single

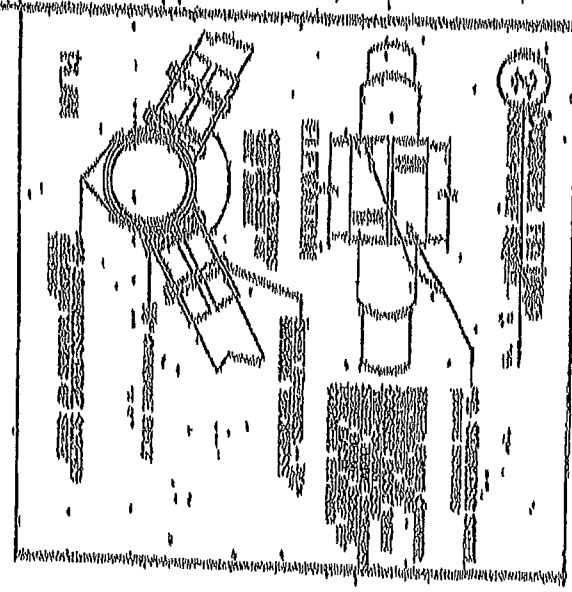
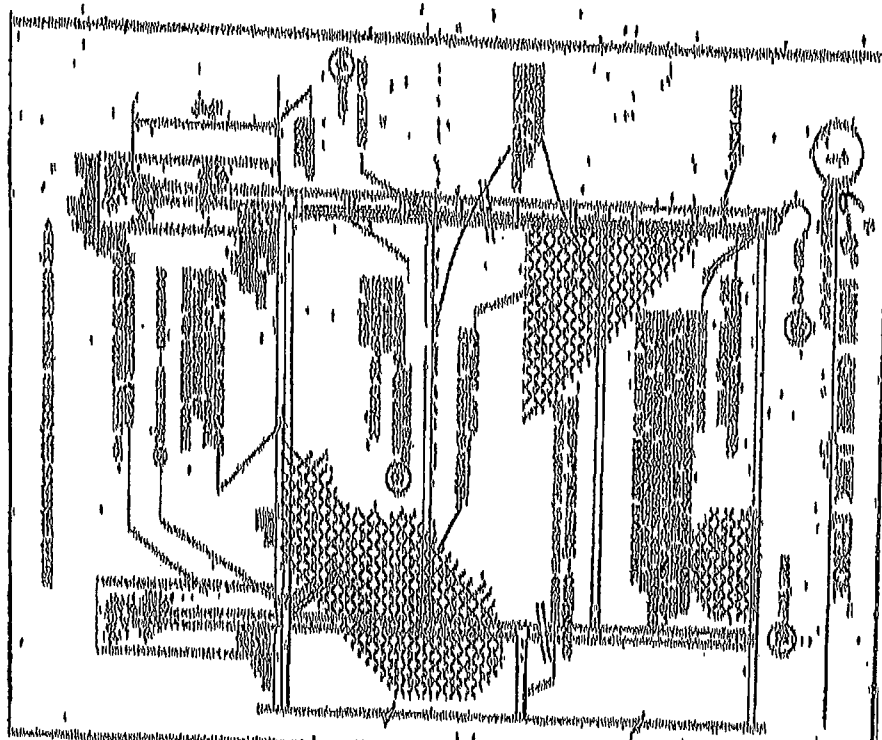
CHAIN LINK GATE DETAIL

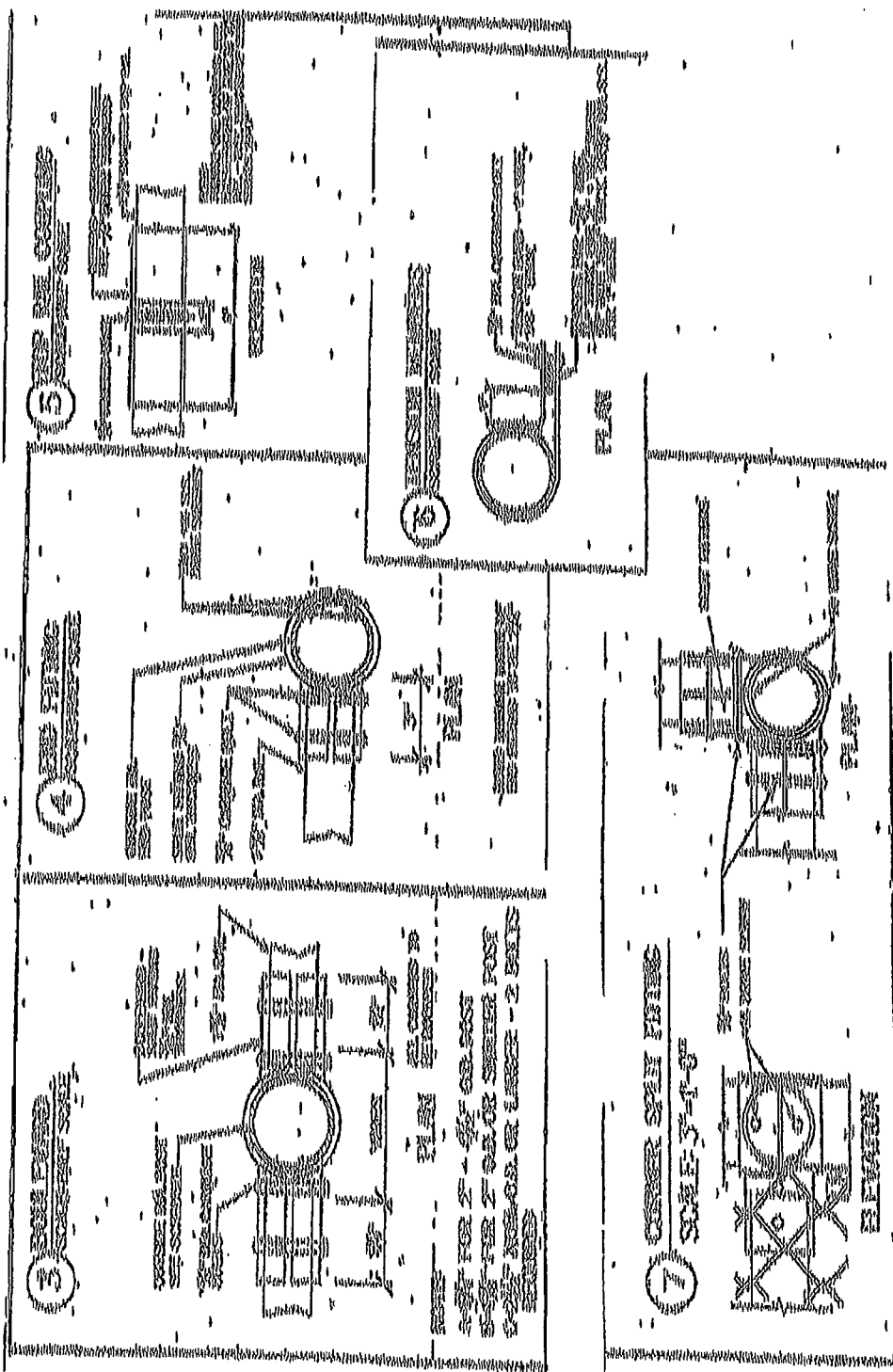
SF = 3.0

PLEASE SEE PAGE 2



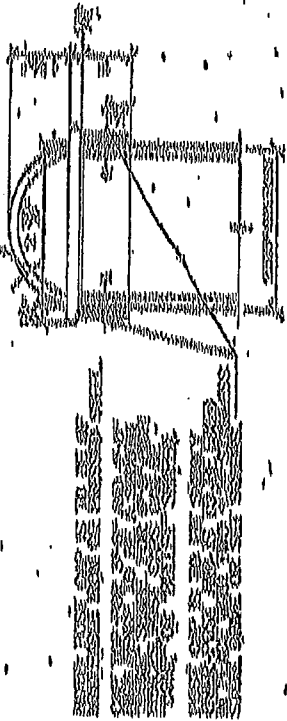






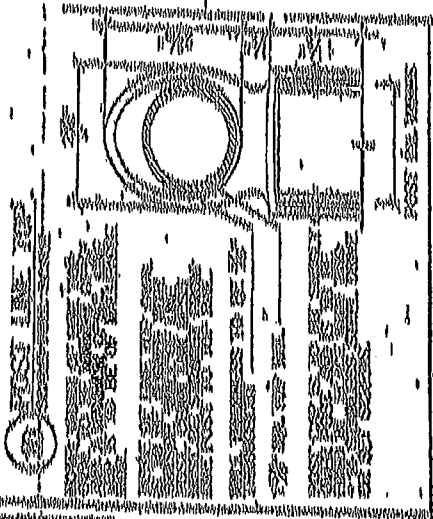
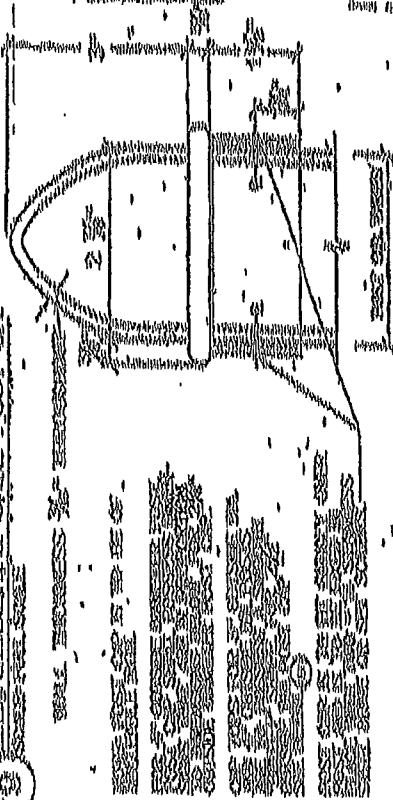
② SECRET POST CAR
SECRET

WEST. 12. 1944. 12. 1944. 12. 1944.



③ SECRET POST CAR
SECRET

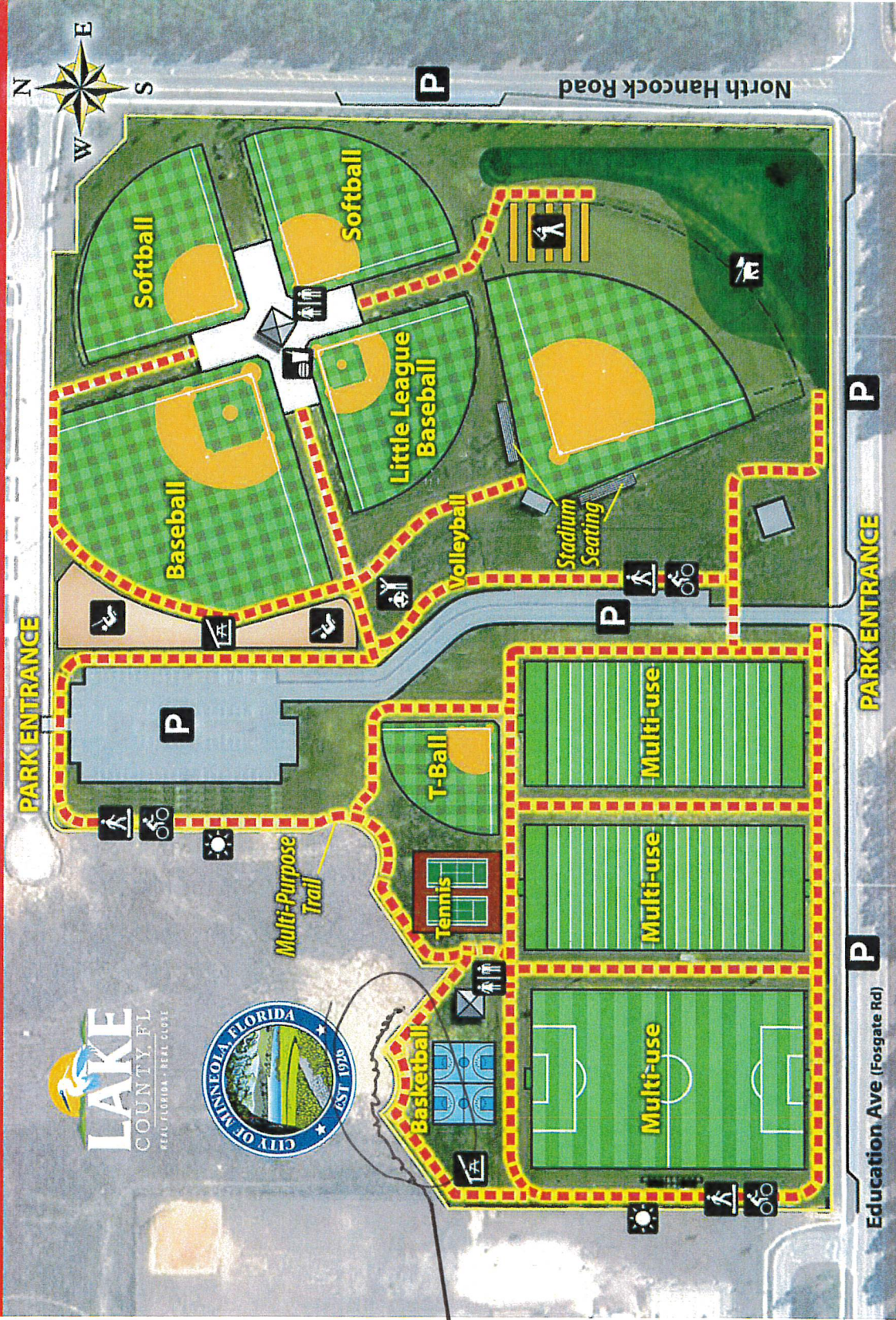
WEST. 12. 1944. 12. 1944. 12. 1944.



WEST. 12. 1944.

Minneola Athletic Complex

SOUTH LAKE COMMUNITY PARK



work
Location

Total: 26 Acres

SITE DIRECTORY

- Parking** **Restroom** **Exercise Station** **Pavilion** **Concession** **Path Lighting (Typical)**
- Multi-Use Trail** **Playground** **Dog Park** **Batting Cages**





