

Exhibit – N**Clarification on Launching, Parking, & Storage**

The logistics of this project are very important to consider when gathering information for submitting a bid package. There will be no ability to load or stage “on-site” as access to the site can only be made over water. Access to the project site must be done only through two separate boat ramps.

Determining which boat ramp will be used is dictated by the purpose of the launch. For instance, one boat ramp will be used for launching a crane barge, but that same boat ramp should not be used for the daily transportation of staff to the project site. Especially if the employees all arrive in separate vehicles and require individual parking spaces.

It may be necessary to travel between both ramps, to and from the project site, daily.

Considerations:

Parking:

Storage of trucks and trailers, employee parking, and other construction materials that need temporary rotation in and out of the water will be kept at the McDonald Canal Boat Ramp owned by Lake County as identified in *Figure – 1* of this exhibit.

Launching:

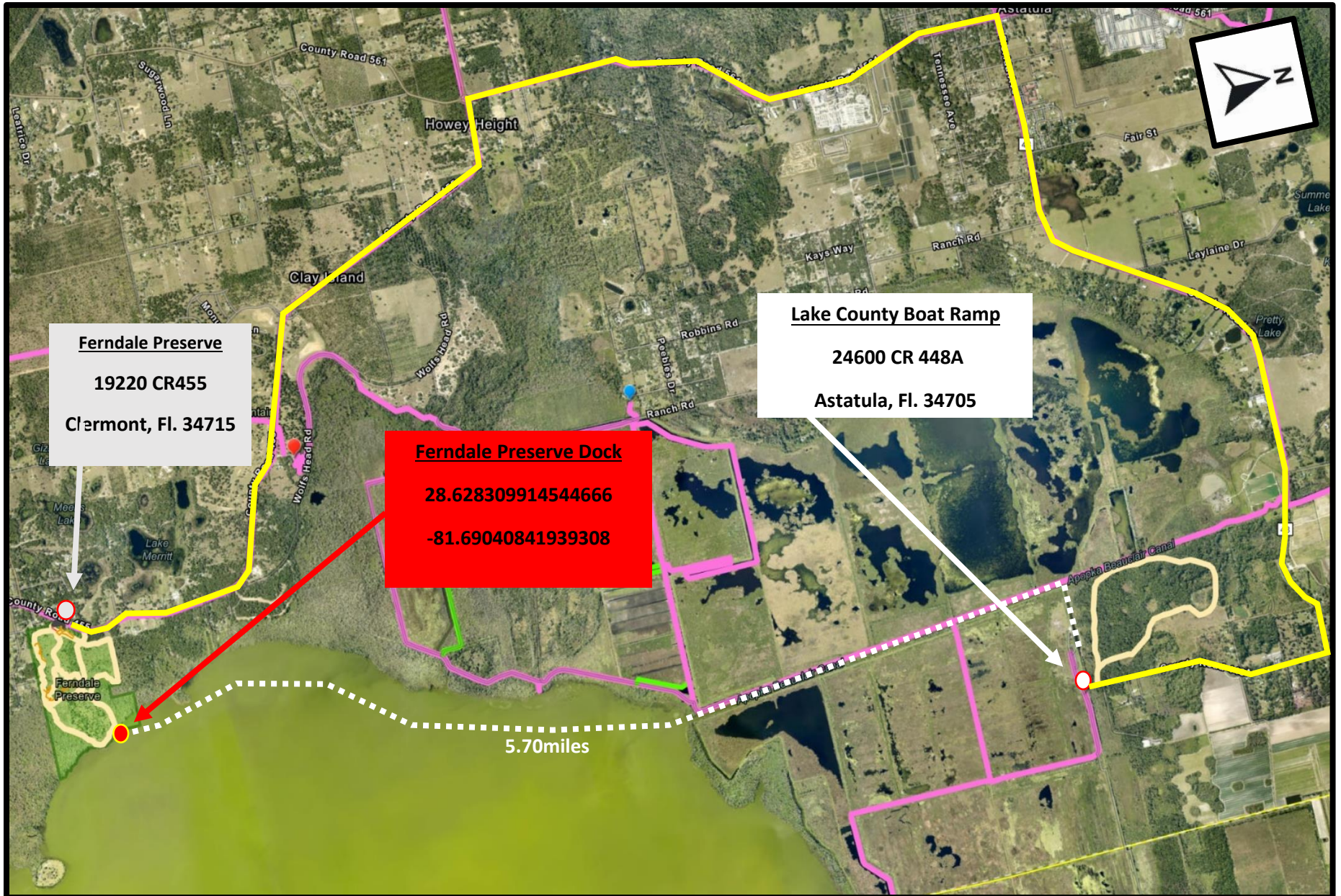
The launching of any heavy equipment, barges, rafts/floats, materials loading, etc. must be done from the Montverde Boat ramp identified in *Figure – 2* of this exhibit.

Security:

Lake County will not be responsible for the security of any materials, vehicles, trailers, or anything else that will be utilized by the contractor to perform this project. Security will rest solely on the contractor. The McDonald Canal Boat Ramp does have a gate where access to the ramp from the roads are closed nightly. Access to the ramp by water is always available and cannot be prevented at any time. Large vessels cannot be moored at the McDonald Canal Boat Ramp due to the size of a bridge over the canal and there are no locations to moor at the Montverde Boat Ramp.

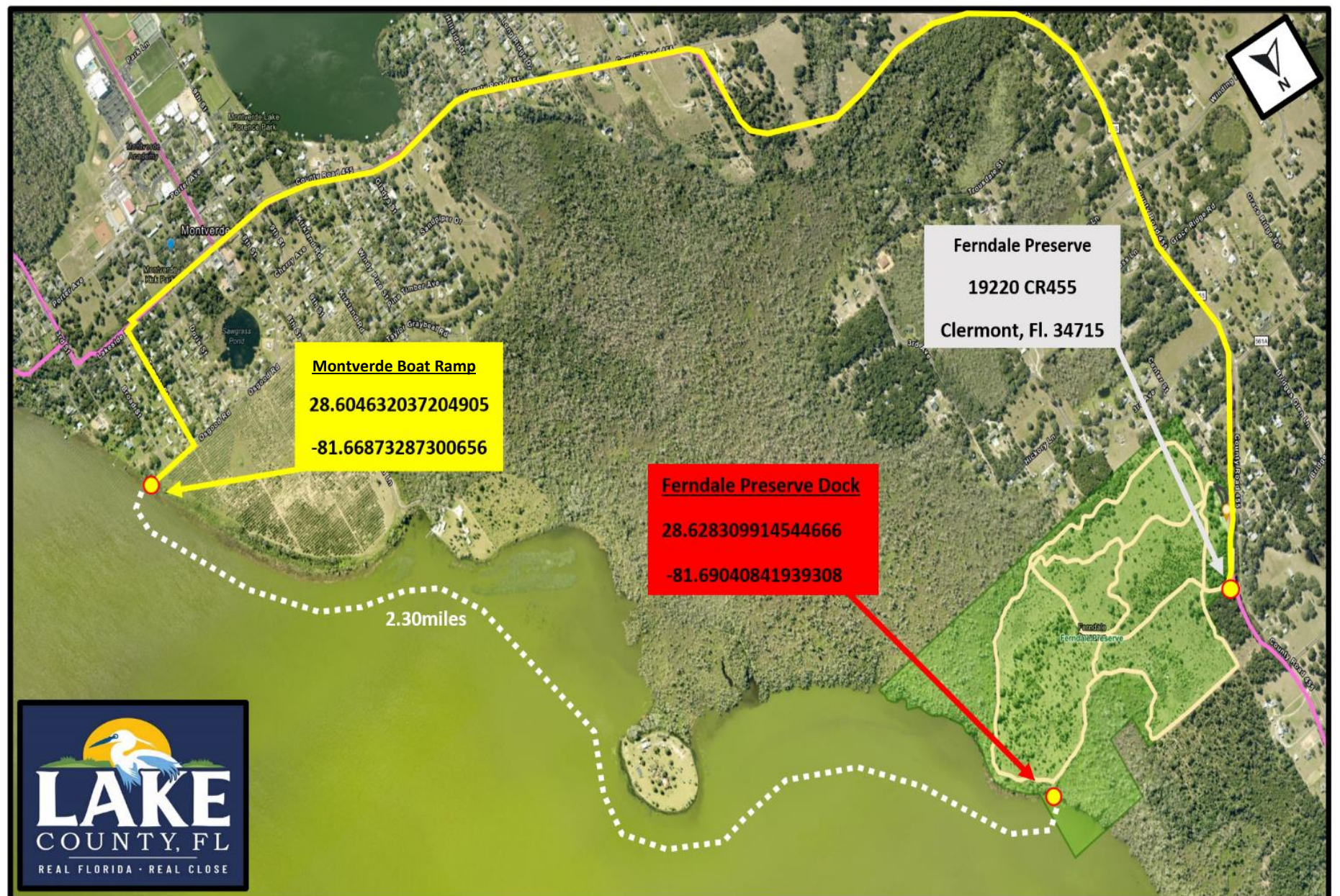
Closure to Public:

It may be necessary to close the Montverde Boat Ramp to the public on occasion to allow for the loading/offloading of materials and equipment. These instances must be kept to a minimum with appropriate advance notice given to the County in order to advertise the closures to the public.



McDonald Canal Access

Figure - 1



Montverde Access

Figure - 2