



October 14, 2021  
Kleinfelder Project No.: 20222626.001A

Ms. Michelle Wilkinson  
Property Manager/Legal Office Manager  
County Attorney's Office  
315 W. Main St, Ste 335  
Tavares, Florida 32778

*Via email: MWilkinson@lakecountyfl.gov*

**SUBJECT: LAKE COUNTY ATTORNEY'S OFFICE – LANE PARK ROAD  
THREATENED AND ENDANGERED SPECIES SURVEY**

Dear Ms. Wilkinson,

On October 1, 2021, Kleinfelder Southeast, Inc. conducted a threatened and endangered (T&E) species survey for the Lane Park Road Project (the Project) for the Lake County Attorney's Office. The Project (+/- 13.69 acres) is located in Section 6 Township 20 South, Range 26 East, of Lake County, Florida (**Figure 1 - Location Map**). The Project is the proposed location for the future Lake County Supervisor of Elections office building.

The T&E species survey, a qualitative evaluation of the Project, was conducted to determine the potential for the occurrence of protected flora and fauna that may require avoidance and/or permitting prior to Project development.

**METHODOLOGY**

**Database Search**

A review of online databases and available resources including the below was conducted in order to determine the likelihood of the presence of federal and state listed floral and/or faunal species within the Project. This likelihood was assessed given the availability of documented and potential suitable habitat, food sources, and nesting sites for listed species within the Project.

- Florida Natural Areas Inventory (FNAI) Biodiversity Index
- United States Fish and Wildlife Service (USFWS) County List of Threatened and Endangered Species
- USFWS Information for Planning and Consultation (IPaC) Report
- Florida Fish and Wildlife Conservation Commission (FWC) Eagle Nest Locator, and
- Audubon Florida EagleWatch Nest Locator

Copies of the FNAI report, USFWS County List, USFWS IPaC report, FWC Eagle Nest Locator, Audubon Florida EagleWatch Nest Locator and a USFWS technical assistance request regarding the blue tail mole skink and sand skink are attached (**Attachments 1-5**).

## Site Conditions

In order to determine areas with the highest potential of the occurrence of threatened or endangered species and which listed species may occur onsite, existing land use and habitats for the Project were classified and mapped. The land uses and vegetative communities within the Project have been classified utilizing the Florida Cooperative Land Cover (CLC) Classification System (CLC, FWC 2019).

## Listed Species Field Assessment

Utilizing methodologies and guidelines established by the FWC and the USFWS, the Project was qualitatively surveyed for the presence and/or potential for occurrence of the flora and fauna listed by the FWC, the USFWS, or the Florida Department of Agriculture and Consumer Services (FDACS) that may have potential to utilize the Project based on the geography and site conditions. Visual observations combined with a pedestrian survey were conducted throughout the entirety of the Project in order to identify and document evidence and utilization by listed species.

## RESULTS

### Database Search

The results of the FNAI Biodiversity Index search are provided in the table below. These wildlife species are either 'documented', 'likely' or have the 'potential' to occur within the Project due to suitable habitat for the species, or because the Project falls within the predicted range of the species. Inclusion on the FNAI list does not confirm presence; however, this list is used to target likely species to evaluate for during the field surveys.

Group	Species	Status
Amphibians	Gopher frog ( <i>Lithobates capito</i> )	SSC
	Striped Newt ( <i>Notophthalmus perstriatus</i> )	SSC
Birds	Red-cockaded Woodpecker ( <i>Picoides borealis</i> )	FE
	Eastern Black Rail ( <i>Laterallus jamaicensis ssp. Jamaicensis</i> )	FT
	Everglade Snail Kite ( <i>Rostrhamus sociabilis plumbeus</i> )	FE
	Florida burrowing owl ( <i>Athene cunicularia floridana</i> )	SSC
	Florida scrub-jay ( <i>Aphelocoma coerulescens</i> )	FT
	Florida sandhill crane ( <i>Grus canadensis pratensis</i> )	ST
	Wood stork ( <i>Mycteria americana</i> )	FT
Mammals	Southeastern bat ( <i>Myotis austroriparius</i> )	-
	Sherman's fox squirrel ( <i>Sciurus niger shermani</i> )	SSC
	Round-tailed muskrat ( <i>Neofiber alleni</i> )	-
	Florida black bear ( <i>Ursus americanus floridanus</i> )	-
	Florida mouse ( <i>Podomys floridanus</i> )	SSC
	Florida Long-tailed Weasel ( <i>Mustela frenata peninsulae</i> )	-

Group	Species	Status
Reptiles	Eastern Indigo Snake ( <i>Drymarchon couperi</i> )	LT
	Gopher tortoise ( <i>Gopherus polyphemus</i> )	ST
	Sand skink ( <i>Neoseps reynoldsi</i> )	FT
	Short-tailed snake ( <i>Stilosoma extenuatum</i> )	ST
	Southern hognose snake ( <i>Heterodon simus</i> )	-
Flora	Britton's Beargrass ( <i>Nolina brittoniana</i> )	LE
	Florida Bonamia ( <i>Bonamia grandiflora</i> )	LT
	Giant orchid ( <i>Pteroglossaspis ecristata</i> )	ST
	Lewton's Polygala ( <i>Polygala lewtonii</i> )	FE
	Papery Whitlow-wort ( <i>Paronychia chartacea</i> )	FT
	Pigeon Wings ( <i>Clitoria fragrans</i> )	FT
	Pygmy Fringe Tree ( <i>Chionanthus pygmaeus</i> )	FE
	Scrub buckwheat ( <i>Erigonum longifolium var. gnaphalifolium</i> )	FE
	Scrub Plum ( <i>Prunus geniculate</i> )	FE
	Wide-leaf Warea ( <i>Warea amplexifolia</i> )	FE
	Incised Groove-bur ( <i>Agrimonia incisa</i> )	ST
	Variable-leaved Indian-plantain ( <i>Arnoglossum diversifolium</i> )	ST
	Many-flowered Grass-pink ( <i>Calopogon multiflorus</i> )	ST
	Chapman's Sedge ( <i>Carex chapmanii</i> )	ST
	Sand Butterfly Pea ( <i>Centrosema arenicola</i> )	SE
	Star Anise ( <i>Illicium parviflorum</i> )	SE
	Nodding Pinweed ( <i>Lechea crenua</i> )	ST
	Florida Spiny-pod ( <i>Matelea floridana</i> )	SE
	Pygmy Pipes ( <i>Monotropis renoldsiae</i> )	SE
	Celestial Lily ( <i>Nemastylis floridana</i> )	SE
	Cutthroat Grass ( <i>Panicum abscissum</i> )	SE
	Florida Willow ( <i>Salix floridana</i> )	SE
Pinkroot ( <i>Spigelia loganioides</i> )	SE	
Clasping Warea ( <i>Warea amplexifolia</i> )	SE	
Carter's Warea ( <i>Warea Carteri</i> )	SE	

Fauna - FWC -; Official Lists of Florida's Endangered Species, Threatened Species, and Species of Special Concern (Ch. 68A-27 F.A.C.; updated 07/2021) [ranking: ST - State-designated Threatened, FE - Federally-designated Endangered, FT - Federally-designated Threatened, FT(S/A) - Federally-designated Threatened by Similarity of Appearance]

Flora – FDACS –; Florida Endangered and Threatened Plants [ranking: SE – State-designated Endangered ST - State-designated Threatened, FE - Federally-designated Endangered, FT - Federally-designated Threatened, FC – Federally-designated Candidate Species]

Additionally, searches of the FWC Eagle Nest Locator and Audubon Florida EagleWatch Nest Locator database was conducted for known bald eagle (*Haliaeetus leucocephalus*) territories in

advance of this T&E survey, due to the proximity of the Project to Lake Harris, Little Lake Harris, Lake Idamere, and Lake Dora. According to the FWC and Audubon records, there are no active bald eagle nests located within the Project; however, there are several documented in the Project vicinity. The closest documented eagle nest is ± 0.32 miles east of the Project (LA910). No information was available regarding the last time this nest was considered active.

### **Site Conditions**

The Project primarily consists of a combination of wooded uplands (Upland Mixed Woodland, CLC Code 1220) and open land with scattered trees (Rural Open Forested, CLC Code 18311). The edge of an offsite forested wetland (Other Wetland Forested Mixed, CLC Code 2240) is located along the western boundary of the Project. The eastern upland region of the Project is characterized by bahia grass (*Paspalum notatum*), dog fennel (*Eupatorium capillifolium*), black cherry (*Prunus serotina*), sabal palm (*Sabal palmetto*) and natal grass (*Melinis repins*). The forested region of the Project consisted of a dense canopy of hardwoods. Additional species throughout the upland portion of the Project included lantana (*Lantana camara*) and camphorweed (*Heterotheca subaxillaris*).

The wetland edge of the Project consisted of caesar weed (*Urena lobata*), red maple (*Acer rubrum*), sweetbay magnolia (*Magnolia virginiana*) and maidencane (*Panicum hemitomon*).

Though not located on the Project, it is notable that Lake Idamere, Lake Harris, and Lake Dora are 0.2, 0.4, and 0.9 miles away, respectively.

### **Listed Species Field Assessment**

#### **Protected Wildlife Species**

Evidence of one (1) listed species, the gopher tortoise, was documented on the Project based on observations by Kleinfelder ecologists on October 1, 2021.

#### **Gopher Tortoise**

The gopher tortoise (*Gopherus polyphemus*) is listed as “Threatened” by the FWC and permits are required to impact areas containing tortoises or their burrows. Suitable habitat includes dry upland areas, including sandhills, scrub, xeric oak hammock, and dry pine flatwoods. Gopher tortoise burrows were observed within the eastern upland region of the Project. No formal survey for the gopher tortoise was conducted in association with this evaluation. Pursuant to the FWC Guidelines a 100% gopher tortoise survey, permitting and relocation of gopher tortoises through the FWC would be required prior to incurring impacts to the Project.

Prior to receiving a permit for the relocation, it is recommended that NO land disturbing activities are conducted within the Project (i.e. tree/brush removal, discing, etc.). This ensures that if the FWC wants to conduct a site review to verify the survey results and site conditions prior to issuing a permit, site integrity is maintained. Be further advised that it is now standard practice for FWC to conduct site reviews prior to permit issuance.

Based on existing land uses/cover types of the Project and surrounding area, topography and soil type, the following listed wildlife species were determined to potentially occupy or utilize the Project.

## Bald Eagle

No bald eagle individuals or nests were observed during this survey event, consistent with the desktop review of the FWC Eagle Nest Locator Database and Audubon Florida's EagleWatch Nest Locator.

The American bald eagle is protected by the USFWS under authority of the Migratory Bird Treaty Act and the Bald Eagle Protection Act. The bald eagle typically nests in mature pine trees located near large, open water bodies. The USFWS has established guidelines regarding activities within a 330-foot zone and 660-foot zone surrounding bald eagle nests.

Based on the lack of documented nests within 660 feet of the Project, the absence of eagles or nests observed within the Project during the field assessment, and the lack of potential nesting trees onsite, the likelihood for the bald eagle to utilize the Project for nesting or foraging is low. There currently does not appear to be any constraints associated with this species.

## Bluetail Mole Skink and Sand Skink

No evidence of sand skink individuals was observed.

The bluetail mole skink (*Eumeces egregious lividus*) and sand skink (*Neoseps reynoldsi*) (collectively "skink") are listed by both the FWC and the USFWS as "Threatened" and permits are required to impact areas where they are found. Based on the current USFWS Protocol, the topography and mapped soils for the Project are considered suitable for the skink. Additionally, the Project is located within the vicinity of a geologic sandy ridge, and the USFWS consultation area for this species. However, the majority of the Project consist of dense grassy vegetation and/or dense canopy cover and is a low-moderate probability that the sand skink is utilizing this habitat.

Due to the presence of suitable mapped soils, appropriate topography and the Project's location within the consultation area for this species, Kleinfelder submitted a request for technical assistance associated with the sand skink to the USFWS on October 11, 2021, in order to determine if a survey would be required for the Project (**Attachment 5**). A copy of the USFWS' determination will be provided under separate cover.

## Florida Sandhill Crane

No sandhill crane (*Grus canadensis pratensis*) individuals or nests were observed on the Project; however, several individuals were observed flying over the adjacent wetland located west of the Project.

The sandhill crane is listed as "Threatened" by FWC. Suitable habitats include prairies, freshwater marshes, and pasture lands. Due to the presence of the forested wetland along the western boundary of the Project, potential foraging habitats for the sandhill crane may exist. However, no sandhill crane individuals or nests were observed on the Project during the T&E assessment. Due to the lack of herbaceous wetland habitat onsite, the likelihood for the sandhill crane to utilize the Project for nesting or foraging is low. There currently does not appear to be any constraints associated with this species.

## **Protected Plant Species**

No plant species protected by the FDACS were observed during the field assessment. Based on known geographic distribution, habitat preference, and existing land uses, there is a low probability for listed floral species to occur within the Project area.

## **Confidentiality**

Kleinfelder will hold confidential business or technical information obtained or generated during the performance of our scope of services. We will not disclose such information without the written authorization of the Client, except to the extent required for: performance of services proposed herein; compliance with professional standards of conduct for the preservation of public health, safety, and welfare; compliance with court order or government directive; and protection of Kleinfelder against claims arising from performance of the services proposed herein.

## **Limitations**

Our work was performed in a manner consistent with that level of care and skill ordinarily exercised by other members of Kleinfelder's profession practicing in the same locality, under similar conditions and at the date the services are provided. Our conclusions, opinions and recommendations were based on a limited number of observations and data. It is possible that conditions could vary between or beyond the data evaluated. Kleinfelder makes no guarantee or warranty, express, or implied, regarding the services, communication (oral or written), report, opinion, or instrument or service provided. Should you have any questions or require additional information, please do not hesitate to contact us.

Sincerely,

**Kleinfelder Southeast, Inc.**



Noah Poloniecki  
Environmental Scientist

Enc:

Figure 1 – Location Map

Figure 2 – Land Use Map

Attachment 1 – FNAI Biodiversity Index Report

Attachment 2 – USFWS Lake County Listed Species

Attachment 3 – USFWS IPaC Report

Attachment 4 – FWC Eagle Nest Locator and Audubon Florida EagleWatch Nest Locator Reports

Attachment 5 – USFWS Technical Assistance Request

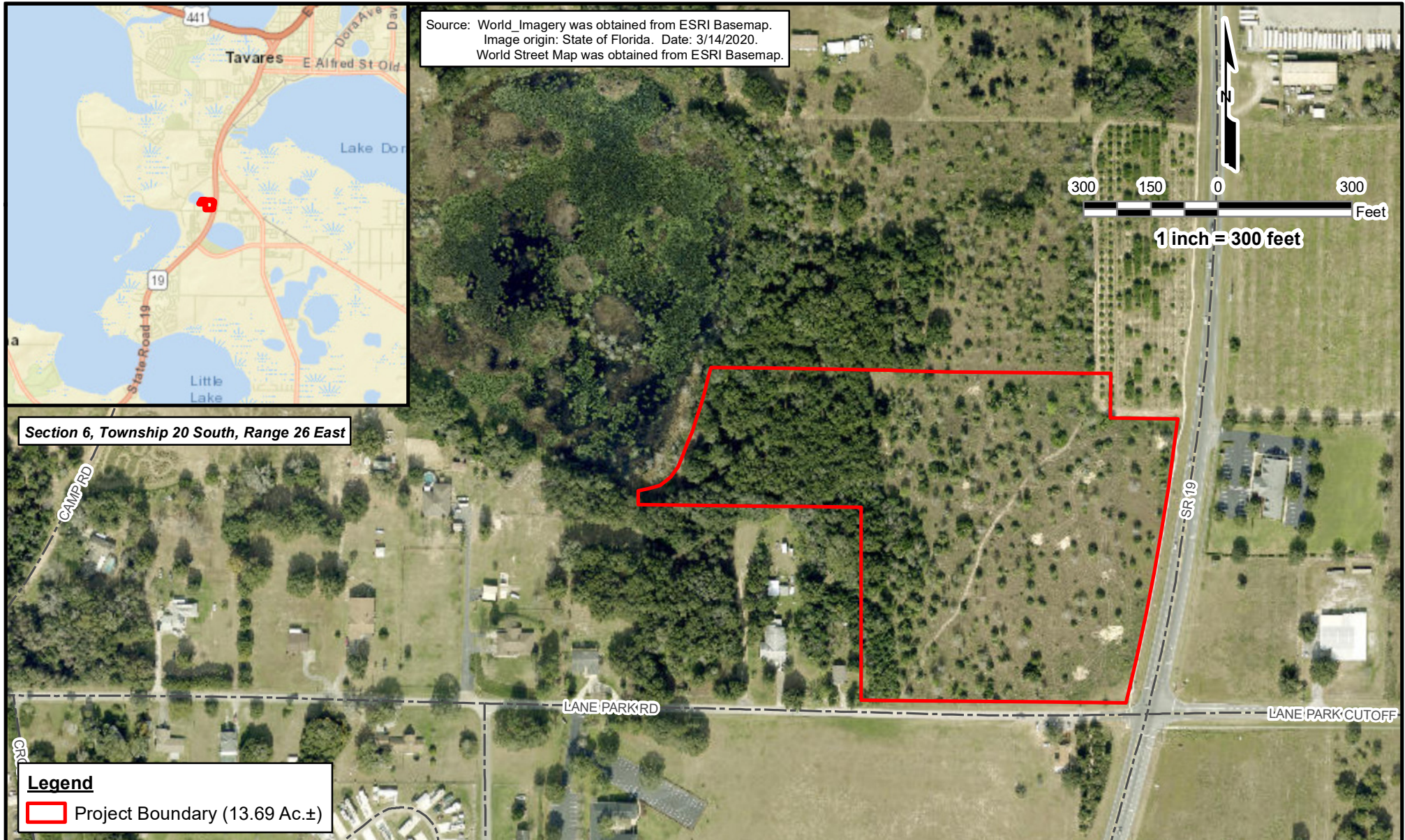
cc: Ms. Alexis Seecharan, Kleinfelder Southeast, Inc.  
Ms. Lisa F. Daugherty, Kleinfelder Southeast, Inc.

## FIGURES

---

**FIGURE 1**

---



The information included on this graphic representation has been compiled from a variety of sources and is subject to change without notice. Kleinfelder makes no representations or warranties, express or implied, as to accuracy, completeness, timeliness, or rights to the use of such information. This document is not intended for use as a land survey product nor is it designed or intended as a construction design document. The use or misuse of the information contained on this graphic representation is at the sole risk of the party using or misusing the information.

**KLEINFELDER**  
Bright People. Right Solutions.  
www.kleinfelder.com

PROJECT NO.	20222626.001A
DRAWN:	10/4/2021
DRAWN BY:	NL
CHECKED BY:	AWN
FILE NAME:	21-1004--LanePark RdProj-Location.mxd

**Project Location Map**

**Lane Park Road Project  
Lake County, Florida**

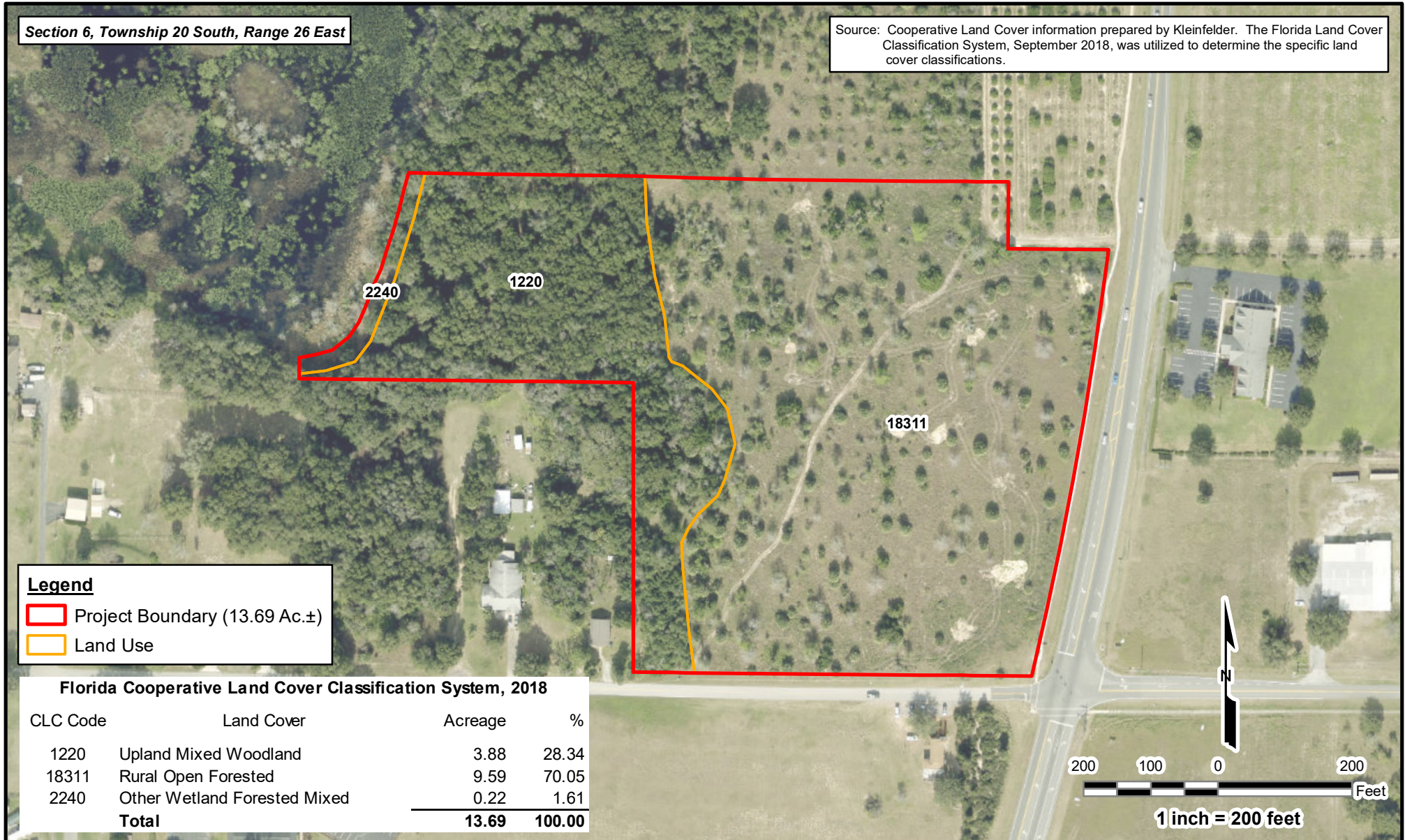
FIGURE  
**1**

**FIGURE 2**

---

**Section 6, Township 20 South, Range 26 East**

Source: Cooperative Land Cover information prepared by Kleinfelder. The Florida Land Cover Classification System, September 2018, was utilized to determine the specific land cover classifications.



**Legend**

- Project Boundary (13.69 Ac.±)
- Land Use

**Florida Cooperative Land Cover Classification System, 2018**

CLC Code	Land Cover	Acreage	%
1220	Upland Mixed Woodland	3.88	28.34
18311	Rural Open Forested	9.59	70.05
2240	Other Wetland Forested Mixed	0.22	1.61
<b>Total</b>		<b>13.69</b>	<b>100.00</b>

The information included on this graphic representation has been compiled from a variety of sources and is subject to change without notice. Kleinfelder makes no representations or warranties, express or implied, as to accuracy, completeness, timeliness, or rights to the use of such information. This document is not intended for use as a land survey product nor is it designed or intended as a construction design document. The use or misuse of the information contained on this graphic representation is at the sole risk of the party using or misusing the information.

PROJECT NO.	20222626.001A
DRAWN:	10/6/2021
DRAWN BY:	NL
CHECKED BY:	NBP
FILE NAME:	21-1006-LanePark RdProj-LandUse.mxd

**Land Use Map**

**Lane Park Road Project  
Lake County, Florida**

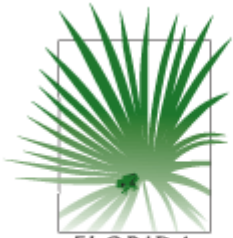
FIGURE  
**2**

## **ATTACHMENTS**

---

**ATTACHMENT 1**

---



1018 Thomasville Road  
 Suite 200-C  
 Tallahassee, FL 32303  
 850-224-8207  
 850-681-9364 fax  
 www.fnai.org

FLORIDA  
**Natural Areas**  
 INVENTORY

# Florida Natural Areas Inventory

## Biodiversity Matrix Query Results

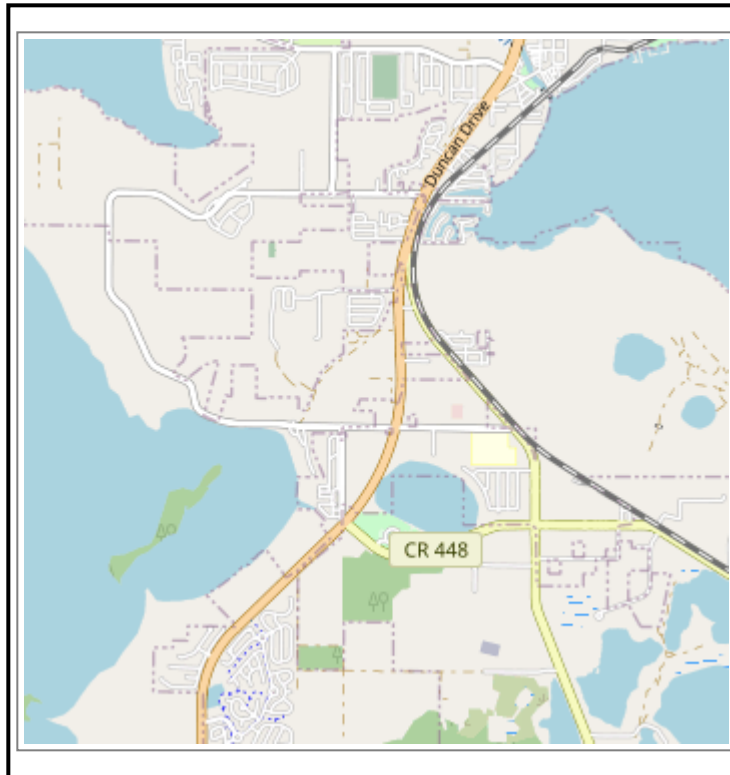
### UNOFFICIAL REPORT

Created 9/30/2021

(Contact the FNAI Data Services Coordinator at 850.224.8207 or kbrinegar@fnai.fsu.edu for information on an official Standard Data Report)

NOTE: The Biodiversity Matrix includes only rare species and natural communities tracked by FNAI.

### Report for 2 Matrix Units: 38522 , 38884



#### Descriptions

**DOCUMENTED** - There is a documented occurrence in the FNAI database of the species or community within this Matrix Unit.

**DOCUMENTED-HISTORIC** - There is a documented occurrence in the FNAI database of the species or community within this Matrix Unit; however the occurrence has not been observed/reported within the last twenty years.

**LIKELY** - The species or community is *known* to occur in this vicinity, and is considered likely within this Matrix Unit because:

1. documented occurrence overlaps this and adjacent Matrix Units, but the documentation isn't precise enough to indicate which of those Units the species or community is actually located in; *or*
2. there is a documented occurrence in the vicinity and there is suitable habitat for that species or community within this Matrix Unit.

**POTENTIAL** - This Matrix Unit lies within the known or predicted range of the species or community based on expert knowledge and environmental variables such as climate, soils, topography, and landcover.

#### Matrix Unit ID: 38522

1 Documented Element Found

Scientific and Common Names	Global Rank	State Rank	Federal Status	State Listing
<i>Baygall</i>	G4	S4	N	N

0 Documented-Historic Elements Found

4 Likely Elements Found

Scientific and Common Names	Global Rank	State Rank	Federal Status	State Listing
<i>Basin swamp</i>	G4	S3	N	N
<a href="#">Cyprinodon variegatus hubbsi</a>	G5T2Q	S2	N	SSC
Lake Eustis Pupfish				
<i>Mesic flatwoods</i>	G4	S4	N	N
<a href="#">Mycteria americana</a>	G4	S2	LT	FT

Wood Stork

**Matrix Unit ID: 38884****2 Documented** Elements Found

Scientific and Common Names	Global Rank	State Rank	Federal Status	State Listing
<i>Geopsammodyus relictillus</i> Relictual Tiny Sand-loving Scarab	G2G3	S2S3	N	N
<a href="#">Sceloporus woodi</a> Florida Scrub Lizard	G2G3	S2S3	N	N

**5 Documented-Historic** Elements Found

Scientific and Common Names	Global Rank	State Rank	Federal Status	State Listing
<a href="#">Bonamia grandiflora</a> Florida Bonamia	G3	S3	LT	E
<a href="#">Eriogonum longifolium var. gnaphalifolium</a> Scrub Buckwheat	G4T3	S3	LT	E
<i>Geolycosa xera</i> McCrone's Burrowing Wolf Spider	G2G3	S2S3	N	N
<a href="#">Nolina brittoniana</a> Britton's Beargrass	G3	S3	LE	E
<a href="#">Polygala lewtonii</a> Lewton's Polygala	G2G3	S2S3	LE	E

**5 Likely** Elements Found

Scientific and Common Names	Global Rank	State Rank	Federal Status	State Listing
<a href="#">Cyprinodon variegatus hubbsi</a> Lake Eustis Pupfish	G5T2Q	S2	N	SSC
<i>Mesic flatwoods</i>	G4	S4	N	N
<a href="#">Mycteria americana</a> Wood Stork	G4	S2	LT	FT
<a href="#">Plestiodon reynoldsi</a> Sand Skink	G2	S2	LT	FT
<i>Sandhill upland lake</i>	G3	S2	N	N

**Matrix Unit IDs: 38522, 38884****39 Potential** Elements Common to Any of the 2 Matrix Units

Scientific and Common Names	Global Rank	State Rank	Federal Status	State Listing
<i>Agrimonia incisa</i> Incised Groove-bur	G3	S2	N	T
<a href="#">Aphelocoma coerulescens</a> Florida Scrub-Jay	G2	S2	LT	FT
<i>Arnoglossum diversifolium</i> Variable-leaved Indian-plantain	G2	S2	N	T
<a href="#">Asplenium heteroresiliens</a> Wagner's Spleenwort	GNA	S1	N	N
<a href="#">Athene cunicularia floridana</a> Florida Burrowing Owl	G4T3	S3	N	SSC
<a href="#">Bonamia grandiflora</a> Florida Bonamia	G3	S3	LT	E
<a href="#">Calopogon multiflorus</a> Many-flowered Grass-pink	G2G3	S2S3	N	T
<i>Carex chapmanii</i> Chapman's Sedge	G3	S3	N	T
<a href="#">Centrosema arenicola</a>	G2Q	S2	N	E

Sand Butterfly Pea				
<i>Coelorachis tuberculosa</i>	G3	S3	N	T
Piedmont Jointgrass				
<a href="#">Drymarchon couperi</a>	G3	S3	LT	FT
Eastern Indigo Snake				
<a href="#">Eriogonum longifolium var. gnaphalifolium</a>	G4T3	S3	LT	E
Scrub Buckwheat				
<a href="#">Gopherus polyphemus</a>	G3	S3	C	ST
Gopher Tortoise				
<a href="#">Grus canadensis pratensis</a>	G5T2T3	S2S3	N	ST
Florida Sandhill Crane				
<a href="#">Heterodon simus</a>	G2	S2	N	N
Southern Hognose Snake				
<a href="#">Illicium parviflorum</a>	G2	S2	N	E
Star Anise				
<a href="#">Lampropeltis extenuata</a>	G3	S3	N	ST
Short-tailed Snake				
<i>Lechea cernua</i>	G3	S3	N	T
Nodding Pinweed				
<a href="#">Lithobates capito</a>	G3	S3	N	SSC
Gopher Frog				
<i>Matelea floridana</i>	G2	S2	N	E
Florida Spiny-pod				
<a href="#">Monotropsis reynoldsiae</a>	G1Q	S1	N	E
Pygmy Pipes				
<i>Mustela frenata peninsulae</i>	G5T3	S3	N	N
Florida Long-tailed Weasel				
<a href="#">Myotis austroriparius</a>	G3G4	S3	N	N
Southeastern Bat				
<a href="#">Nemastylis floridana</a>	G2	S2	N	E
Celestial Lily				
<a href="#">Neofiber alleni</a>	G3	S3	N	N
Round-tailed Muskrat				
<a href="#">Nolina brittoniana</a>	G3	S3	LE	E
Britton's Beargrass				
<a href="#">Notopthalmus perstriatus</a>	G2G3	S2	C	N
Striped Newt				
<i>Panicum abscissum</i>	G3	S3	N	E
Cutthroat Grass				
<a href="#">Podomys floridanus</a>	G3	S3	N	SSC
Florida Mouse				
<a href="#">Polygala lewtonii</a>	G2G3	S2S3	LE	E
Lewton's Polygala				
<a href="#">Pteroglossaspis ecristata</a>	G2G3	S2	N	T
Giant Orchid				
<a href="#">Pteronotropis welaka</a>	G3G4	S3S4	N	SSC
Bluenose Shiner				
<a href="#">Salix floridana</a>	G2	S2	N	E
Florida Willow				
<a href="#">Sceloporus woodi</a>	G2G3	S2S3	N	N
Florida Scrub Lizard				
<a href="#">Sciurus niger shermani</a>	G5T3	S3	N	SSC
Sherman's Fox Squirrel				
<a href="#">Spigelia loganioides</a>	G2Q	S2	N	E
Pinkroot				
<a href="#">Ursus americanus floridanus</a>	G5T2	S2	N	N
Florida Black Bear				
<a href="#">Warea amplexifolia</a>	G1	S1	LE	E
Clasping Warea				
<a href="#">Warea carteri</a>	G3	S3	LE	E
Carter's Warea				

**Disclaimer**

The data maintained by the Florida Natural Areas Inventory represent the single most comprehensive source of information available on the locations of rare species and other significant ecological resources statewide. However, the data are not always based on comprehensive or site-specific field surveys. Therefore, this information should not be regarded as a final statement on the biological resources of the site being considered, nor should it be substituted for on-site surveys. FNAI shall not be held liable for the accuracy and completeness of these data, or opinions or conclusions drawn from these data. FNAI is not inviting reliance on these data. Inventory data are designed for the purposes of conservation planning and scientific research and are not intended for use as the primary criteria for regulatory decisions.

**Unofficial Report**

These results are considered unofficial. FNAI offers a [Standard Data Request](#) option for those needing certifiable data.

**ATTACHMENT 2**

---

# USFWS Endangered Species: Lake County, FL

Scientific Name	Common Name	Where Listed	ESA Listing Status	Lead Office	Group
<i>Danaus plexippus</i>	monarch butterfly	Wherever found	Candidate	3	Insects
<i>Cucurbita okeechobeensis</i> ssp. <i>okeechobeensis</i>	Okeechobee gourd	Wherever found	Endangered	4	Flowering Plants
<i>Cucurbita okeechobeensis</i> ssp. <i>okeechobeensis</i>	Okeechobee gourd	Wherever found	Endangered	4	Flowering Plants
<i>Calidris canutus rufa</i>	Red knot	Wherever found	Threatened	5	Birds
<i>Polyborus plancus audubonii</i>	Audubon's crested caracara	U.S.A. (FL)	Threatened	4	Birds
<i>Eumeces egregius lividus</i>	Bluetail mole skink	Wherever found	Threatened	4	Reptiles
<i>Ursus americanus floridanus</i>	Florida black bear	Wherever found	Resolved Taxon	4	Mammals
<i>Crotalus adamanteus</i>	Eastern diamondback rattlesnake	Wherever found	Under Review	4	Reptiles
<i>Notophthalmus perstriatus</i>	Striped newt	Wherever found	Resolved Taxon	4	Amphibians
<i>Laterallus jamaicensis</i> ssp. <i>jamaicensis</i>	Eastern Black rail	Wherever found	Threatened	4	Birds
<i>Trichechus manatus</i>	West Indian Manatee	Wherever found	Threatened	4	Mammals
<i>Trichechus manatus</i>	West Indian Manatee	Wherever found	Threatened	4	Mammals
<i>Prunus geniculata</i>	Scrub plum	Wherever found	Endangered	4	Flowering Plants
<i>Drymarchon corais couperi</i>	Eastern indigo snake	Wherever found	Threatened	4	Reptiles
<i>Drymarchon corais couperi</i>	Eastern indigo snake	Wherever found	Threatened	4	Reptiles
<i>Clitoria fragrans</i>	Pigeon wings	Wherever found	Threatened	4	Flowering Plants
<i>Aphelocoma coerulescens</i>	Florida scrub-jay	Wherever found	Threatened	4	Birds
<i>Bonamia grandiflora</i>	Florida bonamia	Wherever found	Threatened	4	Flowering Plants
<i>Paronychia chartacea</i>	Papery whitlow-wort	Wherever found	Threatened	4	Flowering Plants
<i>Polygala lewtonii</i>	Lewton's polygala	Wherever found	Endangered	4	Flowering Plants
<i>Polygala lewtonii</i>	Lewton's polygala	Wherever found	Endangered	4	Flowering Plants
<i>Nolina brittoniana</i>	Britton's beargrass	Wherever found	Endangered	4	Flowering Plants
<i>Gopherus polyphemus</i>	Gopher tortoise	eastern	Candidate	4	Reptiles
<i>Picoides borealis</i>	Red-cockaded woodpecker	Wherever found	Endangered	4	Birds
<i>Eriogonum longifolium</i> var. <i>gnaphalifolium</i>	Scrub buckwheat	Wherever found	Threatened	4	Flowering Plants
<i>Neoseps reynoldsi</i>	Sand skink	Wherever found	Threatened	4	Reptiles
<i>Chionanthus pygmaeus</i>	Pygmy fringe-tree	Wherever found	Endangered	4	Flowering Plants
<i>Warea amplexifolia</i>	Wide-leaf warea	Wherever found	Endangered	4	Flowering Plants
<i>Mycteria americana</i>	Wood stork	U.S.A. (AL, FL, GA, MS, NC, SC)	Threatened	4	Birds

**ATTACHMENT 3**

---

# IPaC resource list

This report is an automatically generated list of species and other resources such as critical habitat (collectively referred to as *trust resources*) under the U.S. Fish and Wildlife Service's (USFWS) jurisdiction that are known or expected to be on or near the project area referenced below. The list may also include trust resources that occur outside of the project area, but that could potentially be directly or indirectly affected by activities in the project area. However, determining the likelihood and extent of effects a project may have on trust resources typically requires gathering additional site-specific (e.g., vegetation/species surveys) and project-specific (e.g., magnitude and timing of proposed activities) information.

Below is a summary of the project information you provided and contact information for the USFWS office(s) with jurisdiction in the defined project area. Please read the introduction to each section that follows (Endangered Species, Migratory Birds, USFWS Facilities, and NWI Wetlands) for additional information applicable to the trust resources addressed in that section.

## Location

Lake County, Florida



## Local office

North Florida Ecological Services Field Office

☎ (904) 731-3336

📅 (904) 731-3045

7915 Baymeadows Way, Suite 200  
Jacksonville, FL 32256-7517

# Endangered species

**This resource list is for informational purposes only and does not constitute an analysis of project level impacts.**

The primary information used to generate this list is the known or expected range of each species. Additional areas of influence (AOI) for species are also considered. An AOI includes areas outside of the species range if the species could be indirectly affected by activities in that area (e.g., placing a dam upstream of a fish population even if that fish does not occur at the dam site, may indirectly impact the species by reducing or eliminating water flow downstream). Because species can move, and site conditions can change, the species on this list are not guaranteed to be found on or near the project area. To fully determine any potential effects to species, additional site-specific and project-specific information is often required.

Section 7 of the Endangered Species Act **requires** Federal agencies to "request of the Secretary information whether any species which is listed or proposed to be listed may be present in the area of such proposed action" for any project that is conducted, permitted, funded, or licensed by any Federal agency. A letter from the local office and a species list which fulfills this requirement can **only** be obtained by requesting an official species list from either the Regulatory Review section in IPaC (see directions below) or from the local field office directly.

For project evaluations that require USFWS concurrence/review, please return to the IPaC website and request an official species list by doing the following:

1. Draw the project location and click CONTINUE.
2. Click DEFINE PROJECT.
3. Log in (if directed to do so).
4. Provide a name and description for your project.
5. Click REQUEST SPECIES LIST.

Listed species<sup>1</sup> and their critical habitats are managed by the [Ecological Services Program](#) of the U.S. Fish and Wildlife Service (USFWS) and the fisheries division of the National Oceanic and Atmospheric Administration (NOAA Fisheries<sup>2</sup>).

Species and critical habitats under the sole responsibility of NOAA Fisheries are **not** shown on this list. Please contact [NOAA Fisheries](#) for [species under their jurisdiction](#).

1. Species listed under the [Endangered Species Act](#) are threatened or endangered; IPaC also shows species that are candidates, or proposed, for listing. See the [listing status page](#) for more information. IPaC only shows species that are regulated by USFWS (see FAQ).
2. [NOAA Fisheries](#), also known as the National Marine Fisheries Service (NMFS), is an office of the National Oceanic and Atmospheric Administration within the Department of Commerce.

The following species are potentially affected by activities in this location:

## Birds

NAME

STATUS

**Eastern Black Rail** *Laterallus jamaicensis ssp. jamaicensis* **Threatened**

Wherever found

No critical habitat has been designated for this species.

<http://ecos.fws.gov/ecp/species/10477>

**Everglade Snail Kite** *Rostrhamus sociabilis plumbeus* **Endangered**

Wherever found

There is **final** critical habitat for this species. The location of the critical habitat is not available.

<http://ecos.fws.gov/ecp/species/7713>

**Florida Scrub-jay** *Aphelocoma coerulescens* **Threatened**

Wherever found

No critical habitat has been designated for this species.

<http://ecos.fws.gov/ecp/species/6174>

**Wood Stork** *Mycteria americana* **Threatened**

No critical habitat has been designated for this species.

<http://ecos.fws.gov/ecp/species/8477>

## Reptiles

NAME

STATUS

**Eastern Indigo Snake** *Drymarchon corais couperi* **Threatened**

Wherever found

No critical habitat has been designated for this species.

<http://ecos.fws.gov/ecp/species/646>

**Gopher Tortoise** *Gopherus polyphemus* **Candidate**

No critical habitat has been designated for this species.

<http://ecos.fws.gov/ecp/species/6994>

**Sand Skink** *Neoseps reynoldsi* **Threatened**

Wherever found

No critical habitat has been designated for this species.

<http://ecos.fws.gov/ecp/species/4094>

## Insects

NAME

STATUS

**Monarch Butterfly** *Danaus plexippus* **Candidate**

Wherever found

No critical habitat has been designated for this species.

<http://ecos.fws.gov/ecp/species/9743>

## Flowering Plants

NAME	STATUS
<p><b>Britton's Beargrass</b> <i>Nolina brittoniana</i></p> <p>Wherever found</p> <p>No critical habitat has been designated for this species.  <a href="http://ecos.fws.gov/ecp/species/4460">http://ecos.fws.gov/ecp/species/4460</a></p>	Endangered
<p><b>Florida Bonamia</b> <i>Bonamia grandiflora</i></p> <p>Wherever found</p> <p>No critical habitat has been designated for this species.  <a href="http://ecos.fws.gov/ecp/species/2230">http://ecos.fws.gov/ecp/species/2230</a></p>	Threatened
<p><b>Lewton's Polygala</b> <i>Polygala lewtonii</i></p> <p>Wherever found</p> <p>No critical habitat has been designated for this species.  <a href="http://ecos.fws.gov/ecp/species/6688">http://ecos.fws.gov/ecp/species/6688</a></p>	Endangered
<p><b>Papery Whitlow-wort</b> <i>Paronychia chartacea</i></p> <p>Wherever found</p> <p>No critical habitat has been designated for this species.  <a href="http://ecos.fws.gov/ecp/species/1465">http://ecos.fws.gov/ecp/species/1465</a></p>	Threatened
<p><b>Pigeon Wings</b> <i>Clitoria fragrans</i></p> <p>Wherever found</p> <p>No critical habitat has been designated for this species.  <a href="http://ecos.fws.gov/ecp/species/991">http://ecos.fws.gov/ecp/species/991</a></p>	Threatened
<p><b>Pygmy Fringe-tree</b> <i>Chionanthus pygmaeus</i></p> <p>Wherever found</p> <p>No critical habitat has been designated for this species.  <a href="http://ecos.fws.gov/ecp/species/1084">http://ecos.fws.gov/ecp/species/1084</a></p>	Endangered
<p><b>Scrub Buckwheat</b> <i>Eriogonum longifolium</i> var. <i>gnaphalifolium</i></p> <p>Wherever found</p> <p>No critical habitat has been designated for this species.  <a href="http://ecos.fws.gov/ecp/species/5940">http://ecos.fws.gov/ecp/species/5940</a></p>	Threatened
<p><b>Scrub Plum</b> <i>Prunus geniculata</i></p> <p>Wherever found</p> <p>No critical habitat has been designated for this species.  <a href="http://ecos.fws.gov/ecp/species/2238">http://ecos.fws.gov/ecp/species/2238</a></p>	Endangered
<p><b>Wide-leaf Warea</b> <i>Warea amplexifolia</i></p> <p>Wherever found</p> <p>No critical habitat has been designated for this species.  <a href="http://ecos.fws.gov/ecp/species/412">http://ecos.fws.gov/ecp/species/412</a></p>	Endangered

## Critical habitats

Potential effects to critical habitat(s) in this location must be analyzed along with the endangered species themselves.

THERE ARE NO CRITICAL HABITATS AT THIS LOCATION.

## Migratory birds

Certain birds are protected under the Migratory Bird Treaty Act<sup>1</sup> and the Bald and Golden Eagle Protection Act<sup>2</sup>.

Any person or organization who plans or conducts activities that may result in impacts to migratory birds, eagles, and their habitats should follow appropriate regulations and consider implementing appropriate conservation measures, as described [below](#).

1. The [Migratory Birds Treaty Act](#) of 1918.
2. The [Bald and Golden Eagle Protection Act](#) of 1940.

Additional information can be found using the following links:

- Birds of Conservation Concern <http://www.fws.gov/birds/management/managed-species/birds-of-conservation-concern.php>
- Measures for avoiding and minimizing impacts to birds <http://www.fws.gov/birds/management/project-assessment-tools-and-guidance/conservation-measures.php>
- Nationwide conservation measures for birds <http://www.fws.gov/migratorybirds/pdf/management/nationwidestandardconservationmeasures.pdf>

The birds listed below are birds of particular concern either because they occur on the [USFWS Birds of Conservation Concern](#) (BCC) list or warrant special attention in your project location. To learn more about the levels of concern for birds on your list and how this list is generated, see the FAQ [below](#). This is not a list of every bird you may find in this location, nor a guarantee that every bird on this list will be found in your project area. To see exact locations of where birders and the general public have sighted birds in and around your project area, visit the [E-bird data mapping tool](#) (Tip: enter your location, desired date range and a species on your list). For projects that occur off the Atlantic Coast, additional maps and models detailing the relative occurrence and abundance of bird species on your list are available. Links to additional information about Atlantic Coast birds, and other important information about your migratory bird list, including how to properly interpret and use your migratory bird report, can be found [below](#).

For guidance on when to schedule activities or implement avoidance and minimization measures to reduce impacts to migratory birds on your list, click on the PROBABILITY OF PRESENCE SUMMARY at the top of your list to see when these birds are most likely to be present and breeding in your project area.

NAME

BREEDING SEASON (IF A  
BREEDING SEASON IS INDICATED  
FOR A BIRD ON YOUR LIST, THE  
BIRD MAY BREED IN YOUR  
PROJECT AREA SOMETIME WITHIN  
THE TIMEFRAME SPECIFIED,  
WHICH IS A VERY LIBERAL  
ESTIMATE OF THE DATES INSIDE  
WHICH THE BIRD BREEDS  
ACROSS ITS ENTIRE RANGE.  
"BREEDS ELSEWHERE" INDICATES  
THAT THE BIRD DOES NOT LIKELY  
BREED IN YOUR PROJECT AREA.)

- |                                                                                                                                                                                                                                                                                                                                                                              |                         |
|------------------------------------------------------------------------------------------------------------------------------------------------------------------------------------------------------------------------------------------------------------------------------------------------------------------------------------------------------------------------------|-------------------------|
| <p><b>American Kestrel</b> <i>Falco sparverius paulus</i><br/>This is a Bird of Conservation Concern (BCC) only in particular Bird Conservation Regions (BCRs) in the continental USA<br/><a href="http://ecos.fws.gov/ecp/species/9587">http://ecos.fws.gov/ecp/species/9587</a></p>                                                                                        | Breeds Apr 1 to Aug 31  |
| <p><b>Bald Eagle</b> <i>Haliaeetus leucocephalus</i><br/>This is not a Bird of Conservation Concern (BCC) in this area, but warrants attention because of the Eagle Act or for potential susceptibilities in offshore areas from certain types of development or activities.<br/><a href="http://ecos.fws.gov/ecp/species/1626">http://ecos.fws.gov/ecp/species/1626</a></p> | Breeds Sep 1 to Jul 31  |
| <p><b>Black Skimmer</b> <i>Rynchops niger</i><br/>This is a Bird of Conservation Concern (BCC) throughout its range in the continental USA and Alaska.<br/><a href="http://ecos.fws.gov/ecp/species/5234">http://ecos.fws.gov/ecp/species/5234</a></p>                                                                                                                       | Breeds May 20 to Sep 15 |
| <p><b>Great Blue Heron</b> <i>Ardea herodias occidentalis</i><br/>This is a Bird of Conservation Concern (BCC) only in particular Bird Conservation Regions (BCRs) in the continental USA</p>                                                                                                                                                                                | Breeds Jan 1 to Dec 31  |
| <p><b>Lesser Yellowlegs</b> <i>Tringa flavipes</i><br/>This is a Bird of Conservation Concern (BCC) throughout its range in the continental USA and Alaska.<br/><a href="http://ecos.fws.gov/ecp/species/9679">http://ecos.fws.gov/ecp/species/9679</a></p>                                                                                                                  | Breeds elsewhere        |
| <p><b>Prairie Warbler</b> <i>Dendroica discolor</i><br/>This is a Bird of Conservation Concern (BCC) throughout its range in the continental USA and Alaska.</p>                                                                                                                                                                                                             | Breeds May 1 to Jul 31  |
| <p><b>Swallow-tailed Kite</b> <i>Elanoides forficatus</i><br/>This is a Bird of Conservation Concern (BCC) throughout its range in the continental USA and Alaska.<br/><a href="http://ecos.fws.gov/ecp/species/8938">http://ecos.fws.gov/ecp/species/8938</a></p>                                                                                                           | Breeds Mar 10 to Jun 30 |

# Probability of Presence Summary

The graphs below provide our best understanding of when birds of concern are most likely to be present in your project area. This information can be used to tailor and schedule your project activities to avoid or minimize impacts to birds. Please make sure you read and understand the FAQ "Proper Interpretation and Use of Your Migratory Bird Report" before using or attempting to interpret this report.

## Probability of Presence (■)

Each green bar represents the bird's relative probability of presence in the 10km grid cell(s) your project overlaps during a particular week of the year. (A year is represented as 12 4-week months.) A taller bar indicates a higher probability of species presence. The survey effort (see below) can be used to establish a level of confidence in the presence score. One can have higher confidence in the presence score if the corresponding survey effort is also high.

How is the probability of presence score calculated? The calculation is done in three steps:

1. The probability of presence for each week is calculated as the number of survey events in the week where the species was detected divided by the total number of survey events for that week. For example, if in week 12 there were 20 survey events and the Spotted Towhee was found in 5 of them, the probability of presence of the Spotted Towhee in week 12 is 0.25.
2. To properly present the pattern of presence across the year, the relative probability of presence is calculated. This is the probability of presence divided by the maximum probability of presence across all weeks. For example, imagine the probability of presence in week 20 for the Spotted Towhee is 0.05, and that the probability of presence at week 12 (0.25) is the maximum of any week of the year. The relative probability of presence on week 12 is  $0.25/0.25 = 1$ ; at week 20 it is  $0.05/0.25 = 0.2$ .
3. The relative probability of presence calculated in the previous step undergoes a statistical conversion so that all possible values fall between 0 and 10, inclusive. This is the probability of presence score.

To see a bar's probability of presence score, simply hover your mouse cursor over the bar.

## Breeding Season (■)

Yellow bars denote a very liberal estimate of the time-frame inside which the bird breeds across its entire range. If there are no yellow bars shown for a bird, it does not breed in your project area.

## Survey Effort (|)

Vertical black lines superimposed on probability of presence bars indicate the number of surveys performed for that species in the 10km grid cell(s) your project area overlaps. The number of surveys is expressed as a range, for example, 33 to 64 surveys.

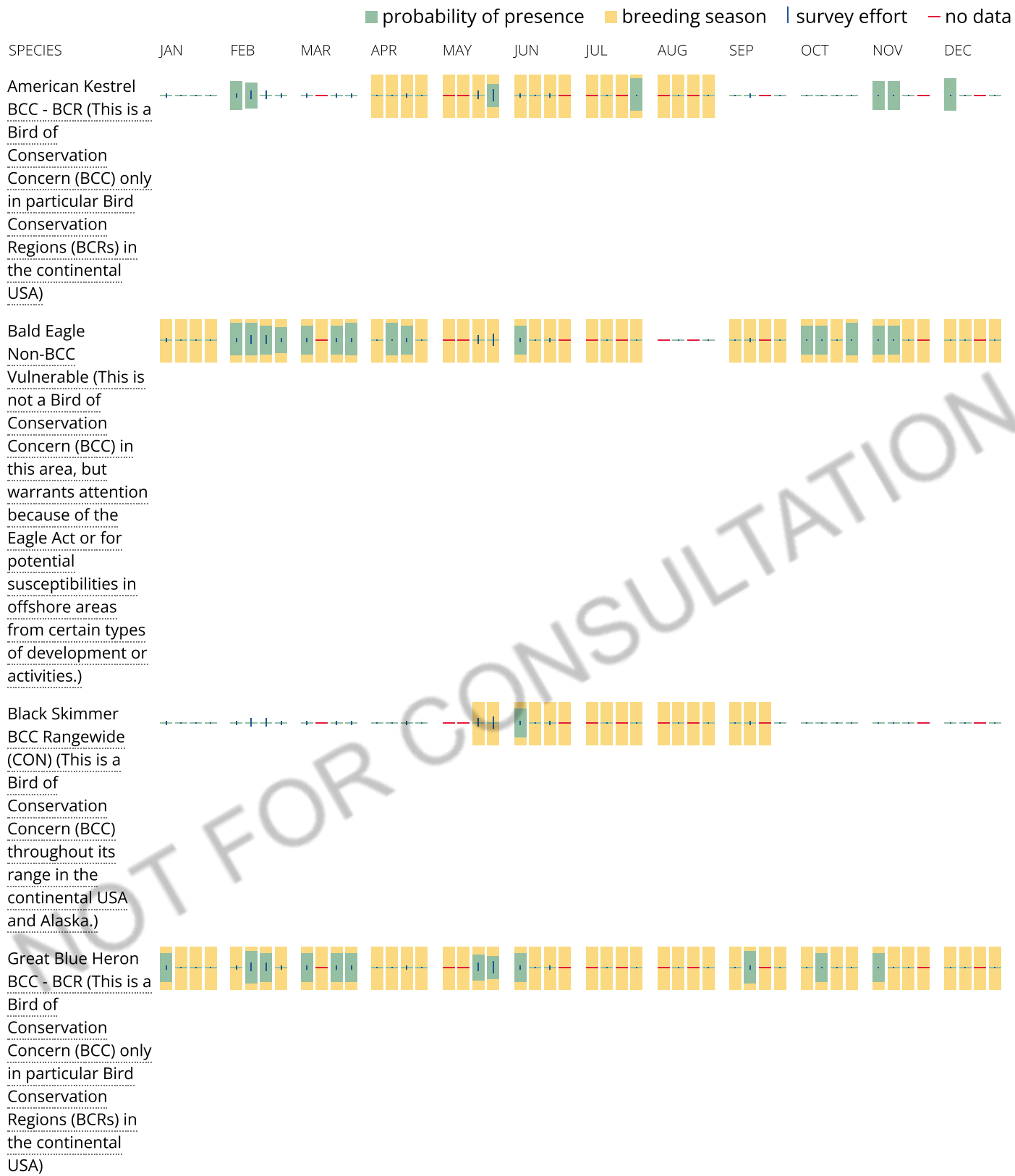
To see a bar's survey effort range, simply hover your mouse cursor over the bar.

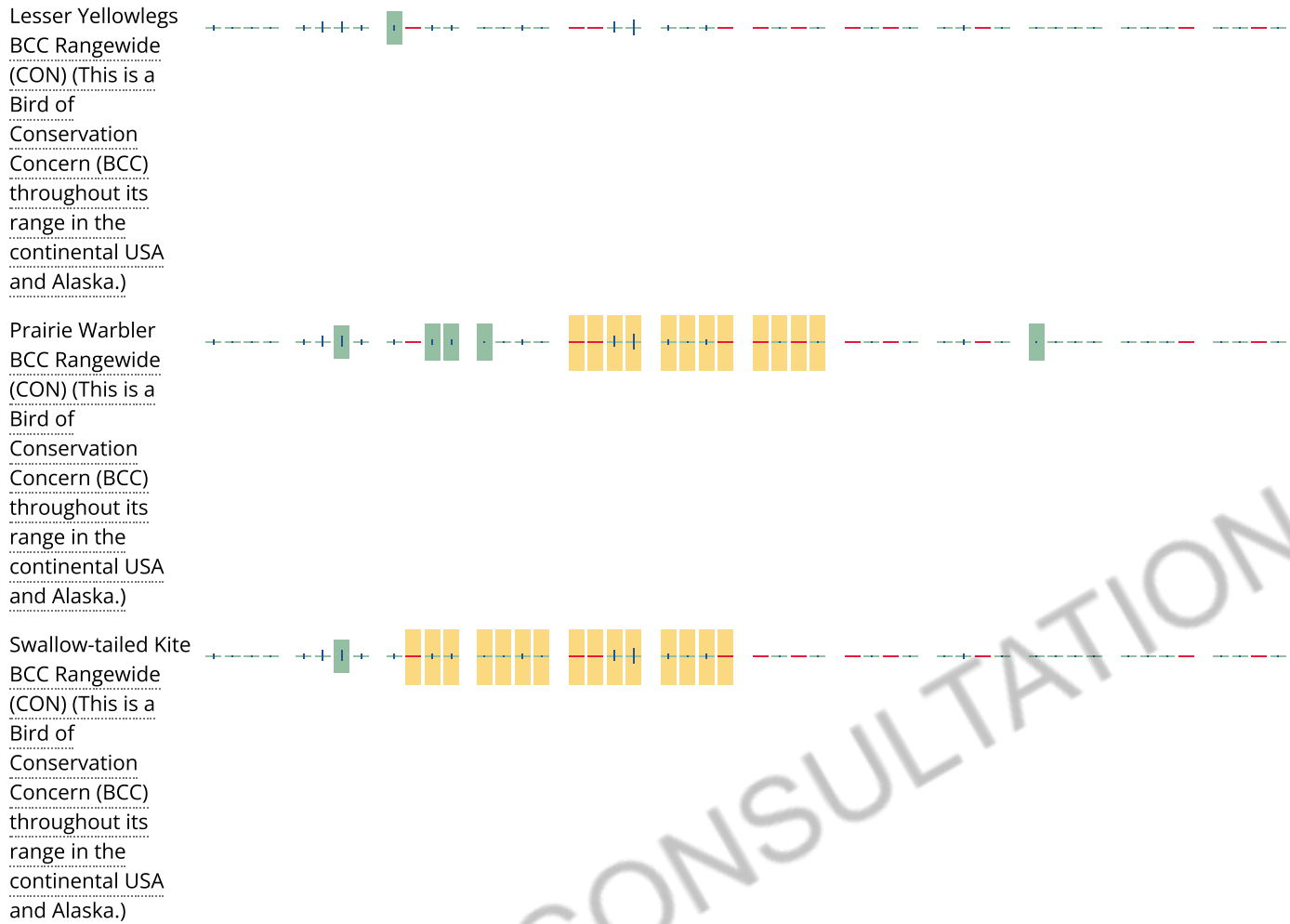
## No Data (—)

A week is marked as having no data if there were no survey events for that week.

## Survey Timeframe

Surveys from only the last 10 years are used in order to ensure delivery of currently relevant information. The exception to this is areas off the Atlantic coast, where bird returns are based on all years of available data, since data in these areas is currently much more sparse.





**Tell me more about conservation measures I can implement to avoid or minimize impacts to migratory birds.**

[Nationwide Conservation Measures](#) describes measures that can help avoid and minimize impacts to all birds at any location year round. Implementation of these measures is particularly important when birds are most likely to occur in the project area. When birds may be breeding in the area, identifying the locations of any active nests and avoiding their destruction is a very helpful impact minimization measure. To see when birds are most likely to occur and be breeding in your project area, view the Probability of Presence Summary. [Additional measures](#) or [permits](#) may be advisable depending on the type of activity you are conducting and the type of infrastructure or bird species present on your project site.

**What does IPaC use to generate the migratory birds potentially occurring in my specified location?**

The Migratory Bird Resource List is comprised of USFWS [Birds of Conservation Concern \(BCC\)](#) and other species that may warrant special attention in your project location.

The migratory bird list generated for your project is derived from data provided by the [Avian Knowledge Network \(AKN\)](#). The AKN data is based on a growing collection of [survey, banding, and citizen science datasets](#) and is queried and filtered to return a list of those birds reported as occurring in the 10km grid cell(s) which your project intersects, and that have been identified as warranting special attention because they are a BCC species in that area, an eagle ([Eagle Act](#) requirements may apply), or a species that has a particular vulnerability to offshore activities or development.

Again, the Migratory Bird Resource list includes only a subset of birds that may occur in your project area. It is not representative of all birds that may occur in your project area. To get a list of all birds potentially present in your project area, please visit the [AKN Phenology Tool](#).

## What does IPaC use to generate the probability of presence graphs for the migratory birds potentially occurring in my specified location?

The probability of presence graphs associated with your migratory bird list are based on data provided by the [Avian Knowledge Network \(AKN\)](#). This data is derived from a growing collection of [survey, banding, and citizen science datasets](#).

Probability of presence data is continuously being updated as new and better information becomes available. To learn more about how the probability of presence graphs are produced and how to interpret them, go to the Probability of Presence Summary and then click on the "Tell me about these graphs" link.

## How do I know if a bird is breeding, wintering, migrating or present year-round in my project area?

To see what part of a particular bird's range your project area falls within (i.e. breeding, wintering, migrating or year-round), you may refer to the following resources: [The Cornell Lab of Ornithology All About Birds Bird Guide](#), or (if you are unsuccessful in locating the bird of interest there), the [Cornell Lab of Ornithology Neotropical Birds guide](#). If a bird on your migratory bird species list has a breeding season associated with it, if that bird does occur in your project area, there may be nests present at some point within the timeframe specified. If "Breeds elsewhere" is indicated, then the bird likely does not breed in your project area.

## What are the levels of concern for migratory birds?

Migratory birds delivered through IPaC fall into the following distinct categories of concern:

1. "BCC Rangewide" birds are [Birds of Conservation Concern](#) (BCC) that are of concern throughout their range anywhere within the USA (including Hawaii, the Pacific Islands, Puerto Rico, and the Virgin Islands);
2. "BCC - BCR" birds are BCCs that are of concern only in particular Bird Conservation Regions (BCRs) in the continental USA; and
3. "Non-BCC - Vulnerable" birds are not BCC species in your project area, but appear on your list either because of the [Eagle Act](#) requirements (for eagles) or (for non-eagles) potential susceptibilities in offshore areas from certain types of development or activities (e.g. offshore energy development or longline fishing).

Although it is important to try to avoid and minimize impacts to all birds, efforts should be made, in particular, to avoid and minimize impacts to the birds on this list, especially eagles and BCC species of rangewide concern. For more information on conservation measures you can implement to help avoid and minimize migratory bird impacts and requirements for eagles, please see the FAQs for these topics.

## Details about birds that are potentially affected by offshore projects

For additional details about the relative occurrence and abundance of both individual bird species and groups of bird species within your project area off the Atlantic Coast, please visit the [Northeast Ocean Data Portal](#). The Portal also offers data and information about other taxa besides birds that may be helpful to you in your project review. Alternately, you may download the bird model results files underlying the portal maps through the [NOAA NCCOS Integrative Statistical Modeling and Predictive Mapping of Marine Bird Distributions and Abundance on the Atlantic Outer Continental Shelf](#) project webpage.

Bird tracking data can also provide additional details about occurrence and habitat use throughout the year, including migration. Models relying on survey data may not include this information. For additional information on marine bird tracking data, see the [Diving Bird Study](#) and the [nanotag studies](#) or contact [Caleb Spiegel](#) or [Pam Loring](#).

## What if I have eagles on my list?

If your project has the potential to disturb or kill eagles, you may need to [obtain a permit](#) to avoid violating the Eagle Act should such impacts occur.

## Proper Interpretation and Use of Your Migratory Bird Report

The migratory bird list generated is not a list of all birds in your project area, only a subset of birds of priority concern. To learn more about how your list is generated, and see options for identifying what other birds may be in your project area, please see the FAQ "What does IPaC use to generate the migratory birds potentially occurring in my specified location". Please be aware this report provides the "probability of presence" of birds within the 10 km grid cell(s) that overlap your project; not your exact project footprint. On the graphs provided, please also look carefully at the survey effort (indicated by the black vertical bar) and for the existence of the "no data" indicator (a red horizontal bar). A high survey effort is the key component. If the survey effort is high, then the probability of presence score can be viewed as more dependable. In contrast, a low survey effort bar or no data bar means a lack of data and, therefore, a lack of certainty about presence of the species. This list is not perfect; it is simply a starting point for identifying what birds of concern have the potential to be in your project area, when they might be there, and if they might be breeding (which means nests might be present). The list helps you know what to look for to confirm presence, and helps guide you in knowing when to implement conservation measures to avoid or minimize potential impacts from your project activities, should presence be confirmed. To learn more about conservation measures, visit the FAQ "Tell me about conservation measures I can implement to avoid or minimize impacts to migratory birds" at the bottom of your migratory bird trust resources page.

## Facilities

### Wildlife refuges and fish hatcheries

REFUGE AND FISH HATCHERY INFORMATION IS NOT AVAILABLE AT THIS TIME

## Wetlands in the National Wetlands Inventory

Impacts to [NWI wetlands](#) and other aquatic habitats may be subject to regulation under Section 404 of the Clean Water Act, or other State/Federal statutes.

For more information please contact the Regulatory Program of the local [U.S. Army Corps of Engineers District](#).

Please note that the NWI data being shown may be out of date. We are currently working to update our NWI data set. We recommend you verify these results with a site visit to determine the actual extent of wetlands on site.

This location overlaps the following wetlands:

FRESHWATER EMERGENT WETLAND

[PEM1F](#)

A full description for each wetland code can be found at the [National Wetlands Inventory website](#)

### Data limitations

The Service's objective of mapping wetlands and deepwater habitats is to produce reconnaissance level information on the location, type and size of these resources. The maps are prepared from the analysis of high altitude imagery. Wetlands are identified based on vegetation, visible hydrology and geography. A margin of error is inherent in the use of imagery; thus, detailed on-the-ground inspection of any particular site may result in revision of the wetland boundaries or classification established through image analysis.

The accuracy of image interpretation depends on the quality of the imagery, the experience of the image analysts, the amount and quality of the collateral data and the amount of ground truth verification work conducted. Metadata should be consulted to determine the date of the source imagery used and any mapping problems.

Wetlands or other mapped features may have changed since the date of the imagery or field work. There may be occasional differences in polygon boundaries or classifications between the information depicted on the map and the actual conditions on site.

### **Data exclusions**

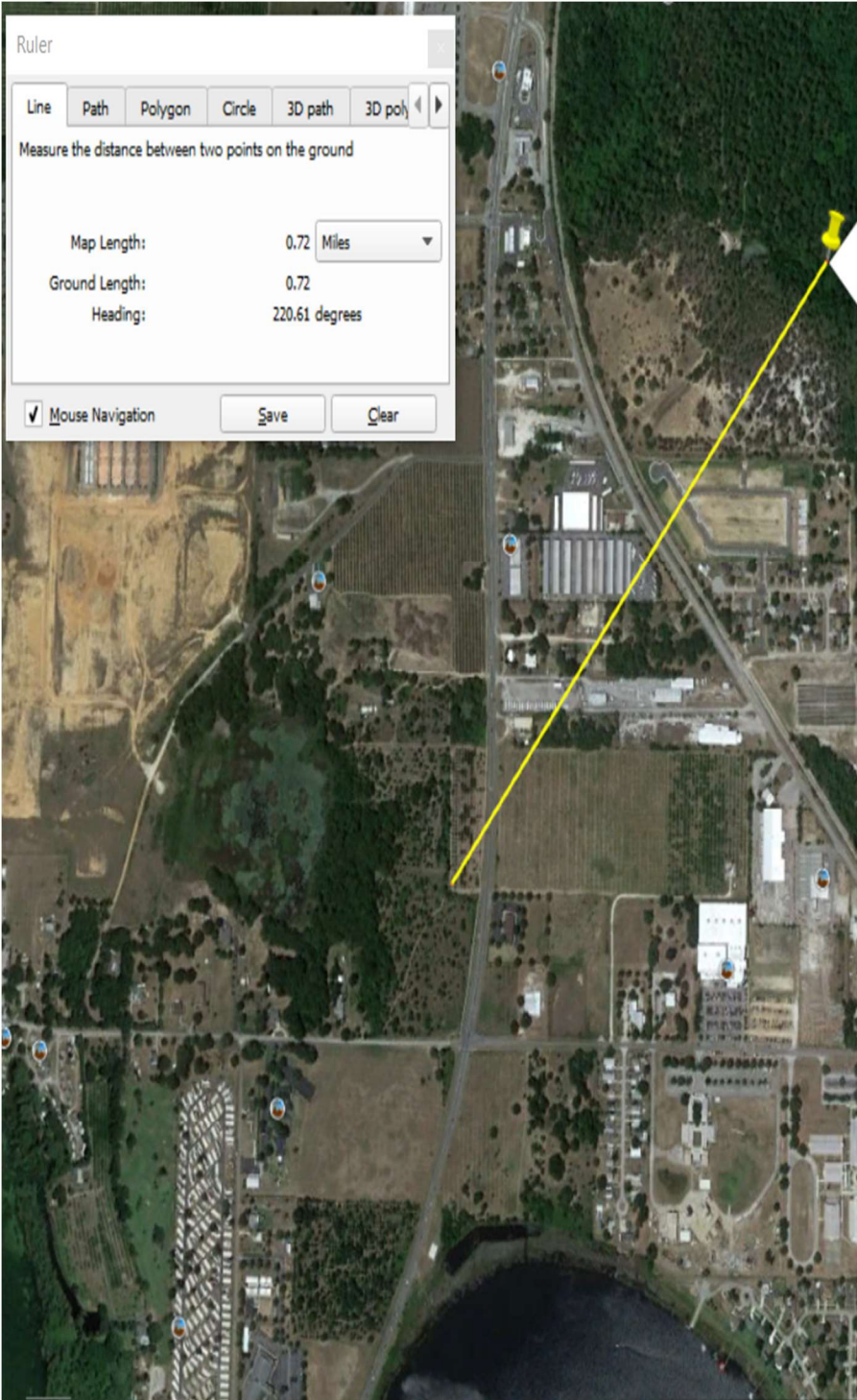
Certain wetland habitats are excluded from the National mapping program because of the limitations of aerial imagery as the primary data source used to detect wetlands. These habitats include seagrasses or submerged aquatic vegetation that are found in the intertidal and subtidal zones of estuaries and nearshore coastal waters. Some deepwater reef communities (coral or tubercid worm reefs) have also been excluded from the inventory. These habitats, because of their depth, go undetected by aerial imagery.

### **Data precautions**

Federal, state, and local regulatory agencies with jurisdiction over wetlands may define and describe wetlands in a different manner than that used in this inventory. There is no attempt, in either the design or products of this inventory, to define the limits of proprietary jurisdiction of any Federal, state, or local government or to establish the geographical scope of the regulatory programs of government agencies. Persons intending to engage in activities involving modifications within or adjacent to wetland areas should seek the advice of appropriate federal, state, or local agencies concerning specified agency regulatory programs and proprietary jurisdictions that may affect such activities.

**ATTACHMENT 4**

---



Ruler

Line Path Polygon Circle 3D path 3D poly

Measure the distance between two points on the ground

Map Length: 0.72 Miles

Ground Length: 0.72

Heading: 220.61 degrees

Mouse Navigation Save Clear

Eagle_Nesting:OBJECTID	3472
Eagle_Nesting:NestID	LA184
Eagle_Nesting:County	Lake
Eagle_Nesting:NestTownsh	20S
Eagle_Nesting:NestRange	26E
Eagle_Nesting:NestSectio	06
Eagle_Nesting:GazPage	79
Eagle_Nesting>LastKnownA	2014
Eagle_Nesting>LastSurvey	2014
Eagle_Nesting:LatDec	28.781833
Eagle_Nesting:LonDec	-81.741833
Eagle_Nesting:Act98	-
Eagle_Nesting:Act99	-
Eagle_Nesting:Act00	-
Eagle_Nesting:Act01	-
Eagle_Nesting:Act02	-
Eagle_Nesting:Act03	-
Eagle_Nesting:Act04	-
Eagle_Nesting:Act05	-
Eagle_Nesting:Act06	-
Eagle_Nesting:Act07	-
Eagle_Nesting:Act08	Y
Eagle_Nesting:Act09	*
Eagle_Nesting:Act10	*
Eagle_Nesting:Active11	Y
Eagle_Nesting:Active12	*
Eagle_Nesting:Active13	*
Eagle_Nesting:Active14	Y
Eagle_Nesting:Active15	*
Eagle_Nesting:last_edited_date	2017/09/19 23:51:32+00



# Audubon Florida EagleWatch Public Nest App



Search by NestID

## Measurement

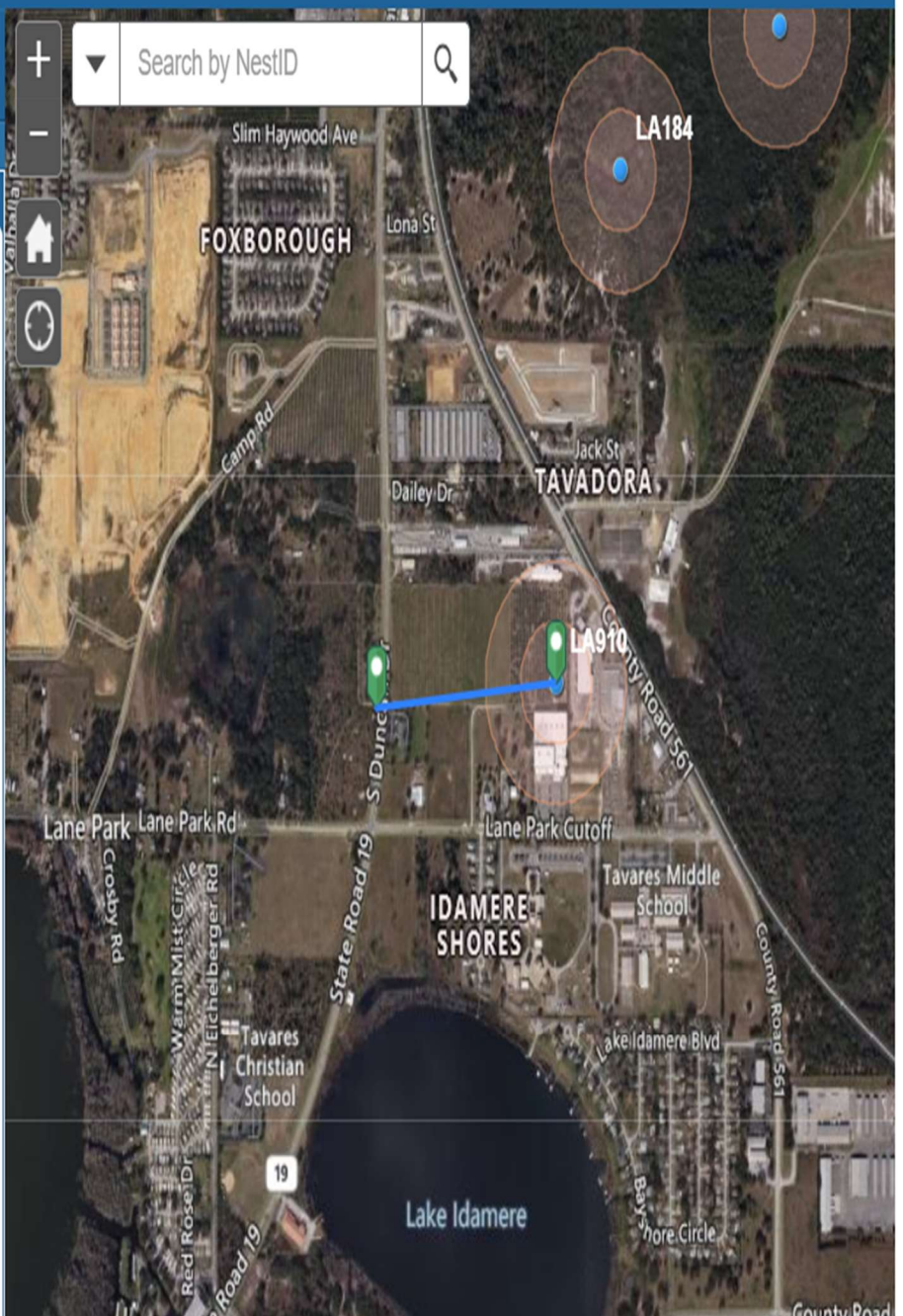


Measurement Result

0.32 Miles

Clear

Press CTRL to enable snapping



**ATTACHMENT 5**

---



October 11, 2021  
Kleinfelder Project No.: 20222626.001A

U.S. Fish and Wildlife Service  
Project Review & Consultation Section  
7915 Baymeadows Way, Suite 200  
Jacksonville, Florida 32256-7517

Via email: [jaxregs@fws.gov](mailto:jaxregs@fws.gov)

**SUBJECT: LANE PARK ROAD PROJECT - SAND SKINK TECHNICAL ASSISTANCE REQUEST**

Dear Sir or Madam:

On October 1, 2021, Kleinfelder Southeast, Inc. (Kleinfelder) conducted a site reconnaissance for the +/- 13.69-acre Lane Park Road project (the Project) for Lake County Attorney's office. The Project is the proposed location for the future Lake County Supervisor of Elections office building. The Project is located in Section 6, Township 20 South, Range 26 East, of Lake County, Florida (**Figure 1 – Project Location Map**).

Due to the Project's location within the consultation area for the sand skink and mapped suitable soils, Kleinfelder is requesting consultation with the U.S. Fish and Wildlife Service (USFWS) as to whether a skink survey is recommended for the Project.

The following provides a summary of the Project Conditions.

Project Conditions

Review of Natural Resources Conservation Service (NRCS) Web Soil Survey soils data (**Web Soil Survey Soil Map**) indicates that the Project contains three (3) total mapped soils, two (2) of which are considered suitable for the skink pursuant to the USFWS Peninsular Florida Species Conservation and Consultation Guide for the Sand Skink and Blue-tailed (Bluetail) Mole Skink, and water. The two (2) suitable soil types mapped on the Project are Candler sand, 0 to 5 percent slopes (8) and Candler Sand, 5 to 12 percent slopes (9). Additionally, a review of the United States Geological Survey (USGS) topography of the Project, indicates that the majority of the Project is situated at 70-100 feet above sea level (asl) (Florida Department of Environmental Protection Map Direct), which is generally considered suitable for the skink pursuant to the USFWS guidelines (>82 feet asl).

The existing land use and habitats for the Project were classified based on the October 1, 2021, site reconnaissance utilizing the Florida Cooperative Land Cover (CLC) Classification System (CLC, FWC 2019). Based on Kleinfelder's observations, the majority of the Project consists primarily of a combination of upland mixed woodlands (CLC Code 1220) and rural open forested uplands (CLC Code 18311). Additionally, the western boundary of the Project is comprised of other wetland forested mixed (CLC Code 2240) land cover. The majority of the upland portions of the Project are characterized by dense grassy vegetation, except for areas devoid of vegetation due to canopy cover and unimproved paths throughout the Project.

The upland mixed woodlands are located on the western portion of the Project and are dominated by a mix of oaks, cabbage palm (*Sabal palmetto*), and remnant citrus trees. Based upon review of historical aerials, this portion of the Project previously consisted of citrus groves prior to 2004. The rural open forested uplands located on the eastern portion of the Project are characterized by a mix of native and disturbance associated herbaceous species including dense natalgrass (*Melinis repens*), bahiagrass (*Paspalum notatum*), crabgrass (*Digitaria ciliaris*), and guineagrass (*Urochloa maxima*). Additional species throughout this portion of the Project include lantana (*Lantana camara*), prickly pear cactus (*Opuntia humifusa*), spotted beebalm (*Monarda punctata*), winged sumac (*Rhus copallina*), black cherry tree (*Prunus serotina*), greenbriar (*Smilax spp.*), and camphorweed (*Heterotheca subaxillaris*). Representative photos of the Project have been attached for your reference (**Photopages**).

While the upland portions of the Project meet the USFWS criteria for soils and elevations, the majority of these areas are characterized by dense grassy vegetation. Therefore, it is unlikely that sand skinks would be utilizing the Project. On behalf of the Lake County Attorney's Office, Kleinfelder respectfully requests USFWS advisement as to whether a formal skink survey within the Project is recommended.

Should you have any questions or comments or if you would like us to provide any additional information, please do not hesitate to contact us.

#### Limitations

Our work was performed in a manner consistent with that level of care and skill ordinarily exercised by other members of Kleinfelder's profession practicing in the same locality, under similar conditions and at the date the services are provided. Our conclusions, opinions and recommendations were based on a limited number of observations and data. It is possible that conditions could vary between or beyond the data evaluated. Kleinfelder makes no guarantee or warranty, express, or implied, regarding the services, communication (oral or written), report, opinion, or instrument or service provided. Should you have any questions or require additional information, please do not hesitate to contact us.

Sincerely,

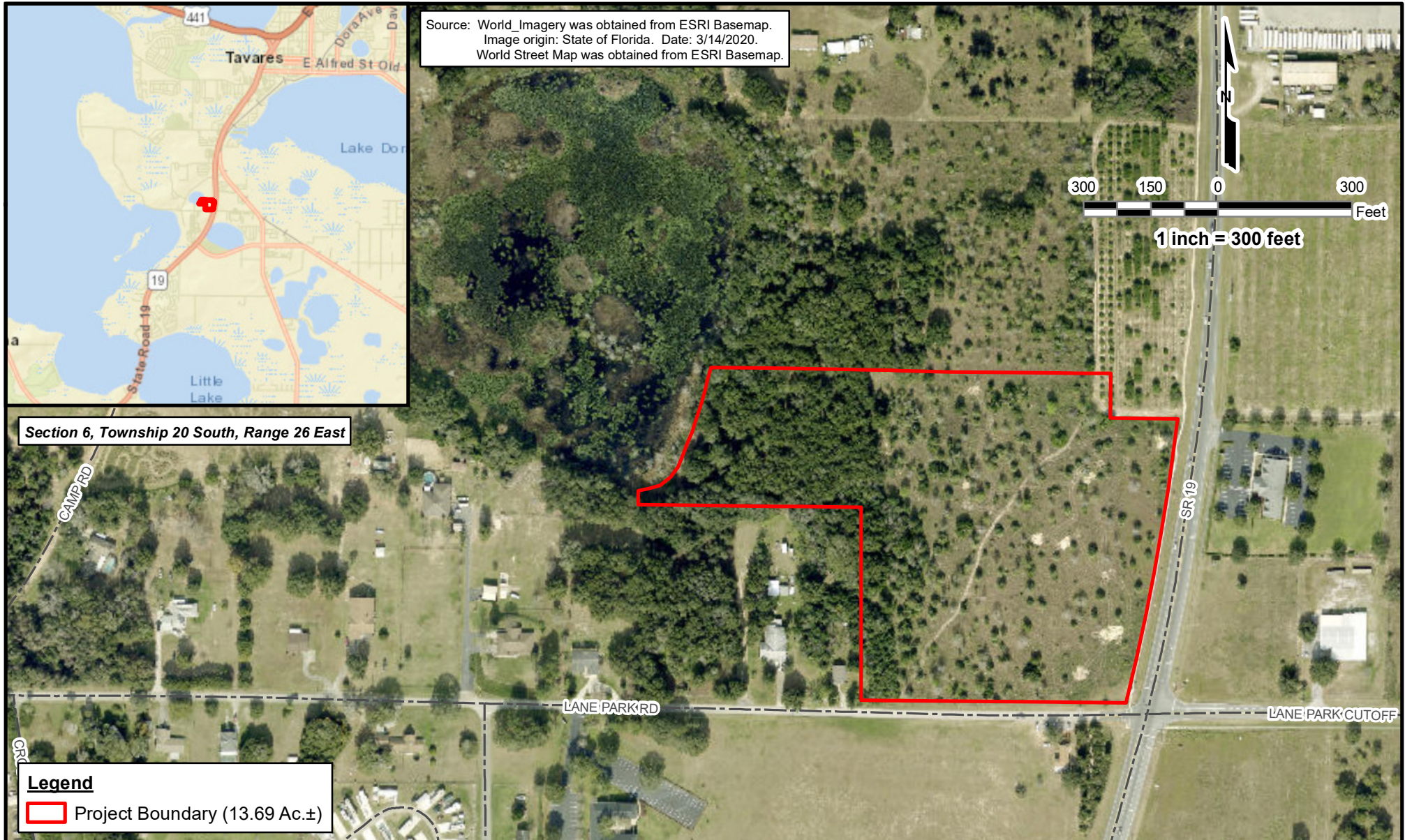
**KLEINFELDER SOUTHEAST, INC.**



Alexis Seecharan  
Project Manager/Ecologist

Enc. Figure 1 – Project Location Map  
Web Soil Survey Soil Map  
Photopages

cc: Ms. Lisa F. Daugherty, PMP (Kleinfelder) (via email)  
File



The information included on this graphic representation has been compiled from a variety of sources and is subject to change without notice. Kleinfelder makes no representations or warranties, express or implied, as to accuracy, completeness, timeliness, or rights to the use of such information. This document is not intended for use as a land survey product nor is it designed or intended as a construction design document. The use or misuse of the information contained on this graphic representation is at the sole risk of the party using or misusing the information.



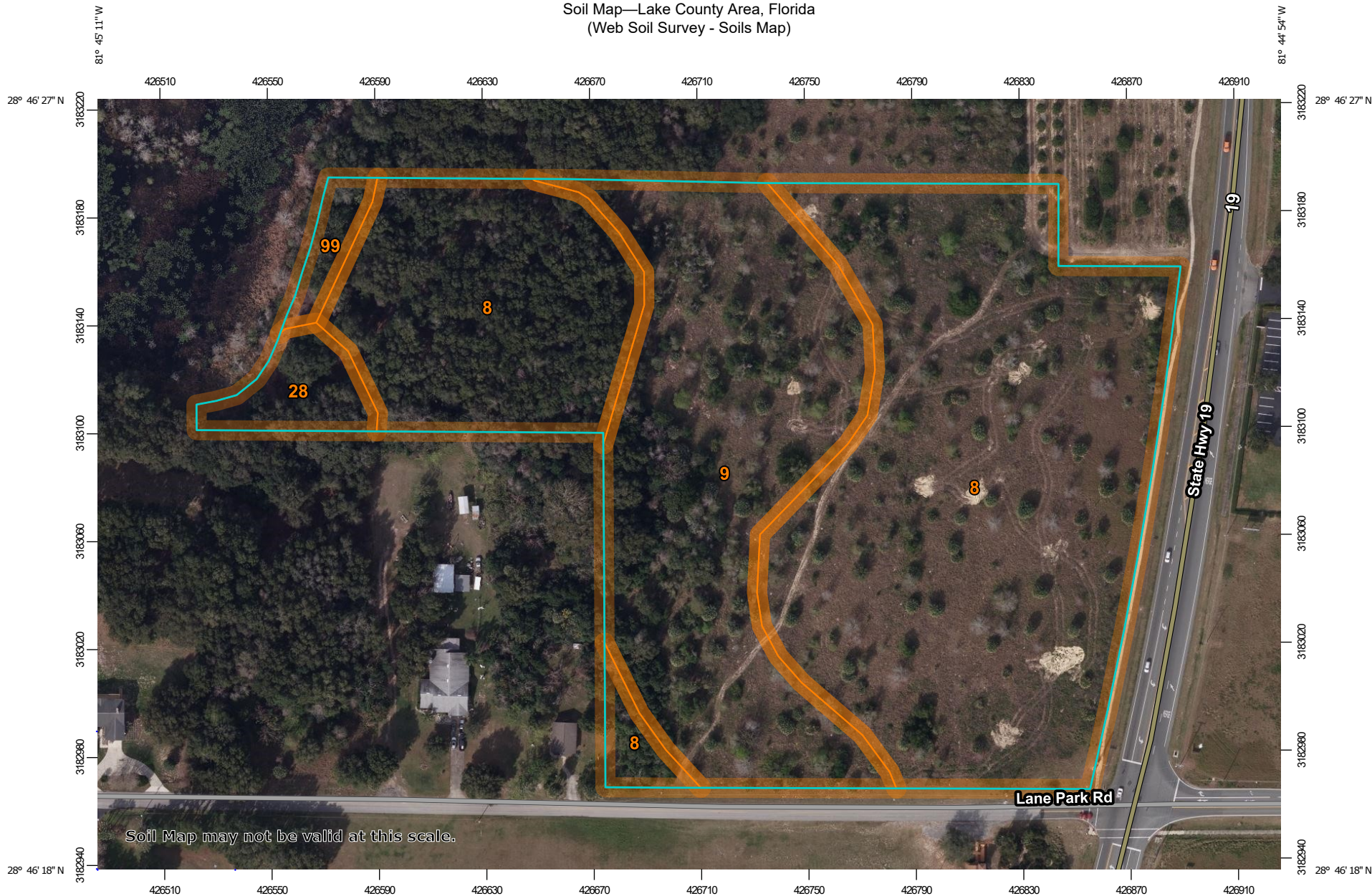
**KLEINFELDER**  
Bright People. Right Solutions.  
www.kleinfelder.com

PROJECT NO.	20222626.001A
DRAWN:	10/4/2021
DRAWN BY:	NL
CHECKED BY:	AWN
FILE NAME:	21-1004--LanePark RdProj-Location.mxd

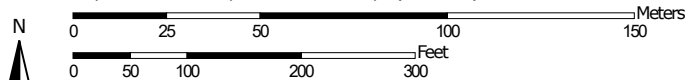
<b>Project Location Map</b>
Lane Park Road Project Lake County, Florida

FIGURE	<b>1</b>
--------	----------

Soil Map—Lake County Area, Florida  
(Web Soil Survey - Soils Map)




Map Scale: 1:2,020 if printed on A landscape (11" x 8.5") sheet.



Map projection: Web Mercator Corner coordinates: WGS84 Edge tics: UTM Zone 17N WGS84

## MAP LEGEND

### Area of Interest (AOI)

 Area of Interest (AOI)

### Soils

 Soil Map Unit Polygons

 Soil Map Unit Lines

 Soil Map Unit Points

### Special Point Features



Blowout



Borrow Pit



Clay Spot



Closed Depression



Gravel Pit



Gravelly Spot



Landfill



Lava Flow



Marsh or swamp



Mine or Quarry



Miscellaneous Water



Perennial Water



Rock Outcrop



Saline Spot



Sandy Spot



Severely Eroded Spot



Sinkhole



Slide or Slip



Sodic Spot



Spoil Area



Stony Spot



Very Stony Spot



Wet Spot



Other



Special Line Features

### Water Features



Streams and Canals

### Transportation



Rails



Interstate Highways



US Routes



Major Roads



Local Roads

### Background



Aerial Photography

## MAP INFORMATION

The soil surveys that comprise your AOI were mapped at 1:20,000.

Warning: Soil Map may not be valid at this scale.

Enlargement of maps beyond the scale of mapping can cause misunderstanding of the detail of mapping and accuracy of soil line placement. The maps do not show the small areas of contrasting soils that could have been shown at a more detailed scale.

Please rely on the bar scale on each map sheet for map measurements.

Source of Map: Natural Resources Conservation Service

Web Soil Survey URL:

Coordinate System: Web Mercator (EPSG:3857)

Maps from the Web Soil Survey are based on the Web Mercator projection, which preserves direction and shape but distorts distance and area. A projection that preserves area, such as the Albers equal-area conic projection, should be used if more accurate calculations of distance or area are required.

This product is generated from the USDA-NRCS certified data as of the version date(s) listed below.

Soil Survey Area: Lake County Area, Florida

Survey Area Data: Version 21, Aug 27, 2021

Soil map units are labeled (as space allows) for map scales 1:50,000 or larger.

Date(s) aerial images were photographed: Jan 19, 2020—Jan 28, 2020

The orthophoto or other base map on which the soil lines were compiled and digitized probably differs from the background imagery displayed on these maps. As a result, some minor shifting of map unit boundaries may be evident.

## Map Unit Legend

Map Unit Symbol	Map Unit Name	Acres in AOI	Percent of AOI
8	Candler sand, 0 to 5 percent slopes	8.9	65.1%
9	Candler sand, 5 to 12 percent slopes	4.2	30.4%
28	Myakka-Myakka, wet, sands, 0 to 2 percent slopes	0.4	3.0%
99	Water	0.2	1.5%
<b>Totals for Area of Interest</b>		<b>13.7</b>	<b>100.0%</b>



**No. 1** Representative view of the upland mixed woodlands on the Project.



**No. 2** Representative view of the upland mixed woodlands on the Project.



**No. 3** Representative view of the upland mixed woodlands on the Project.



**No. 4** Representative view of the upland mixed woodlands on the Project.



**No. 5** Representative view of the rural open forested uplands on the Project.



**No. 6** Representative view of the rural open forested uplands on the Project.



**No. 7** Representative view of the rural open forested uplands on the Project.



**No. 8** Representative view of the rural open forested uplands on the Project.