

Exhibit D - Construction Plans & Specifications

Astor County Library



All concrete shall be 6" thick, fiber reinforced

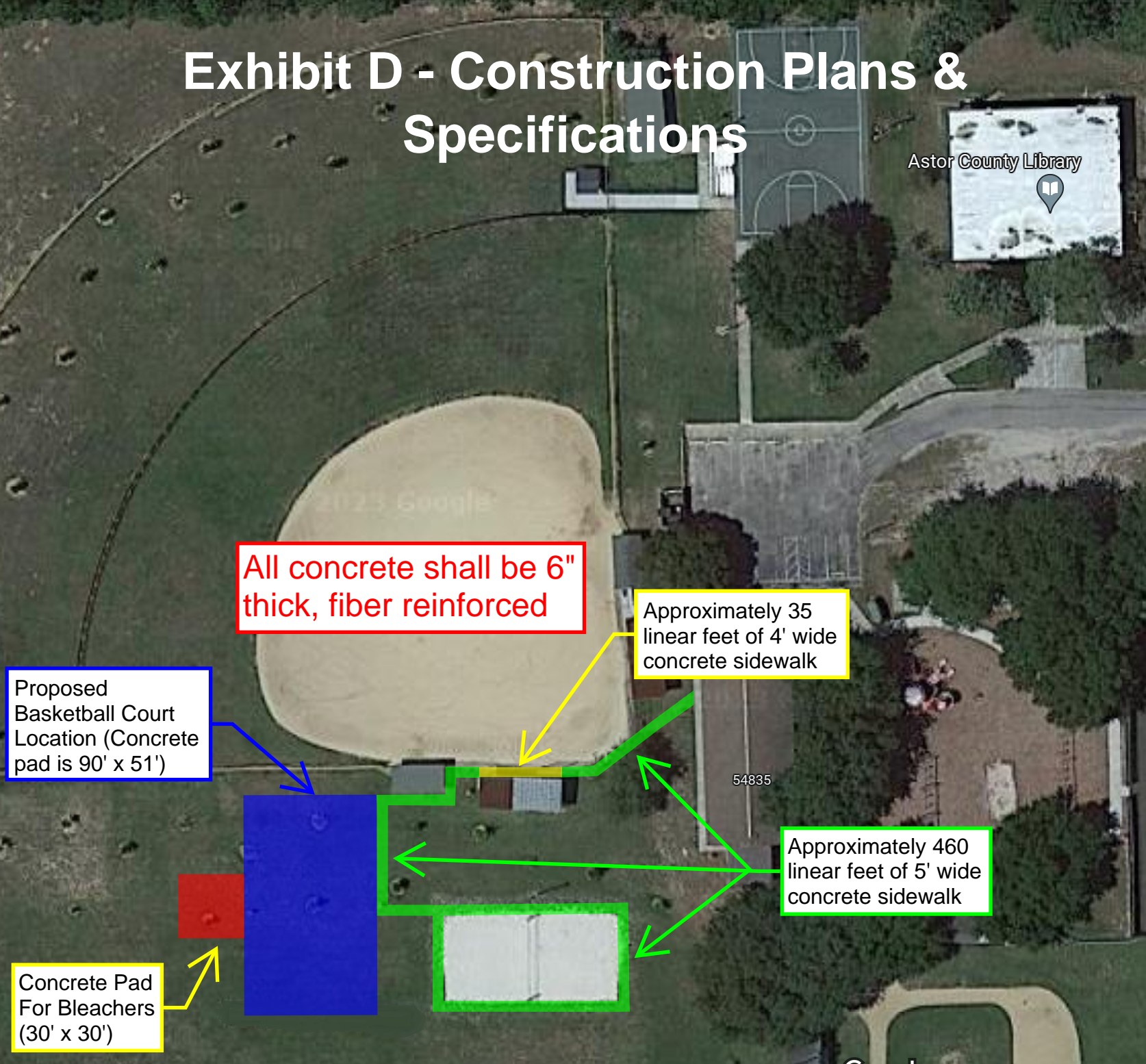
Approximately 35 linear feet of 4' wide concrete sidewalk

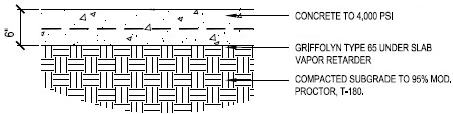
Proposed Basketball Court Location (Concrete pad is 90' x 51')

54835

Approximately 460 linear feet of 5' wide concrete sidewalk

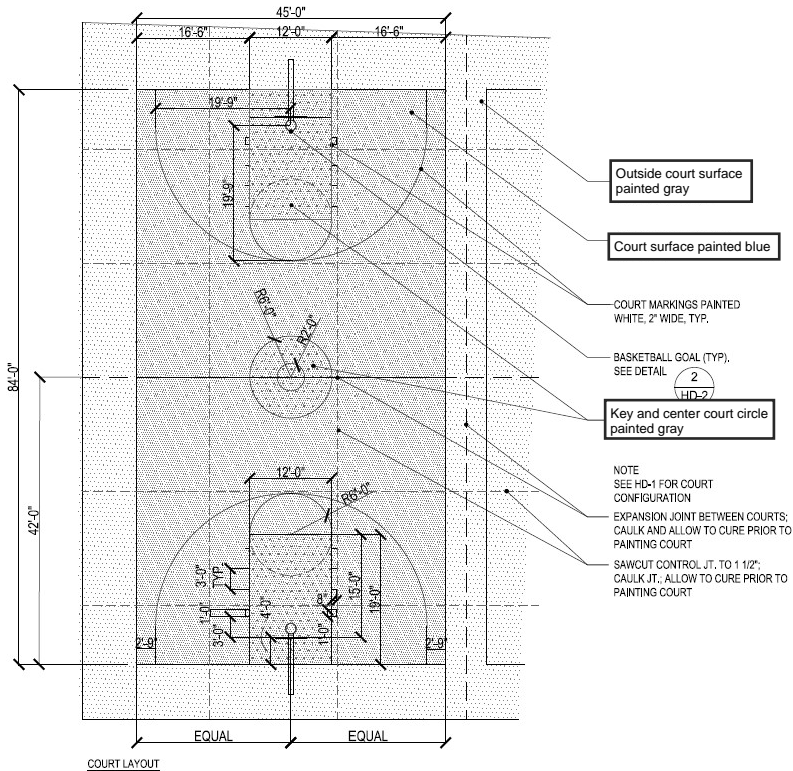
Concrete Pad For Bleachers (30' x 30')



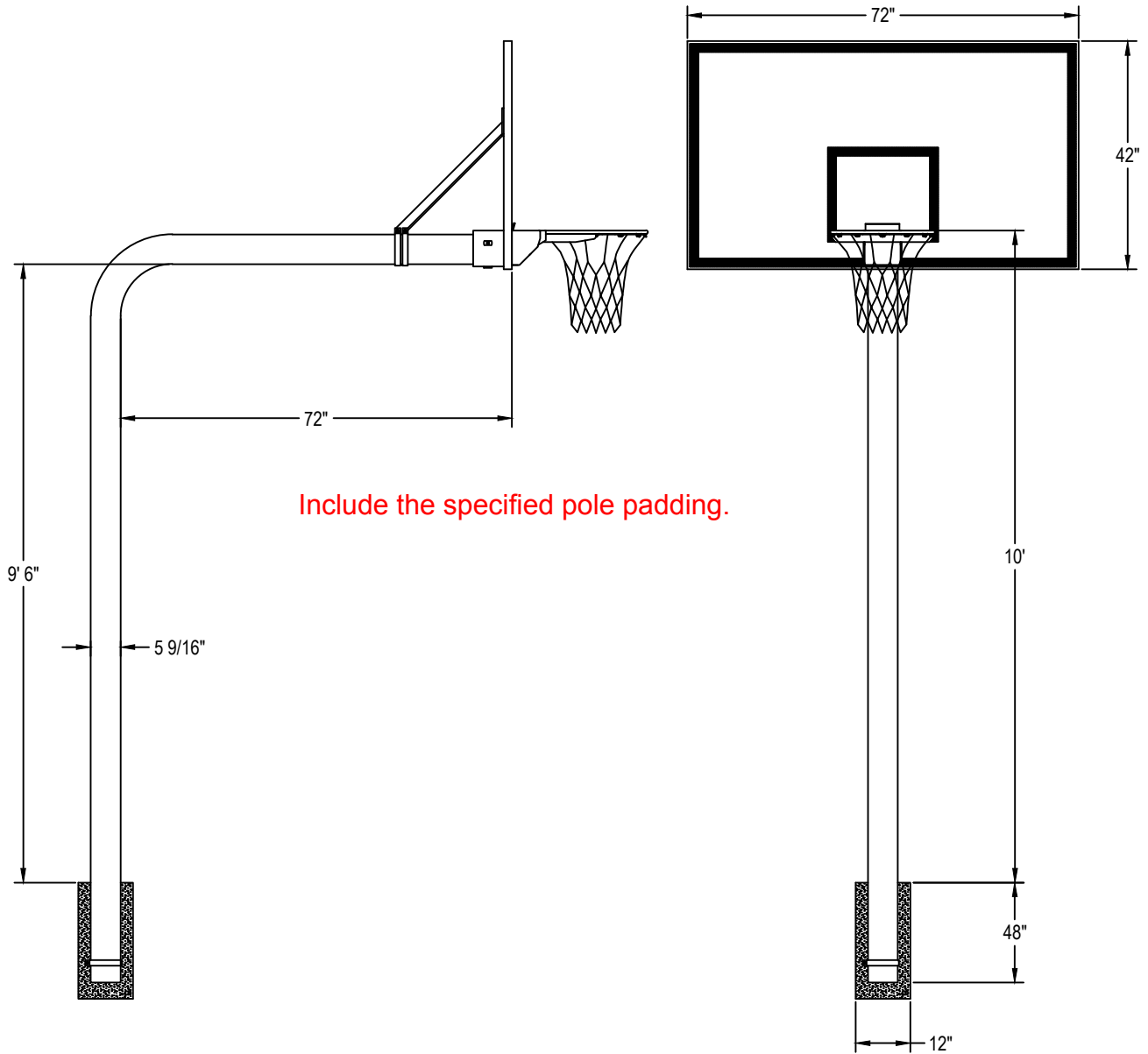


Colors to be chosen and approved By the Office of Parks & Trails

1 COURT SECTION
SCALE: 1" = 1'-0"



3 BASKETBALL COURT LAYOUT
SCALE: 3/32" = 1'-0"



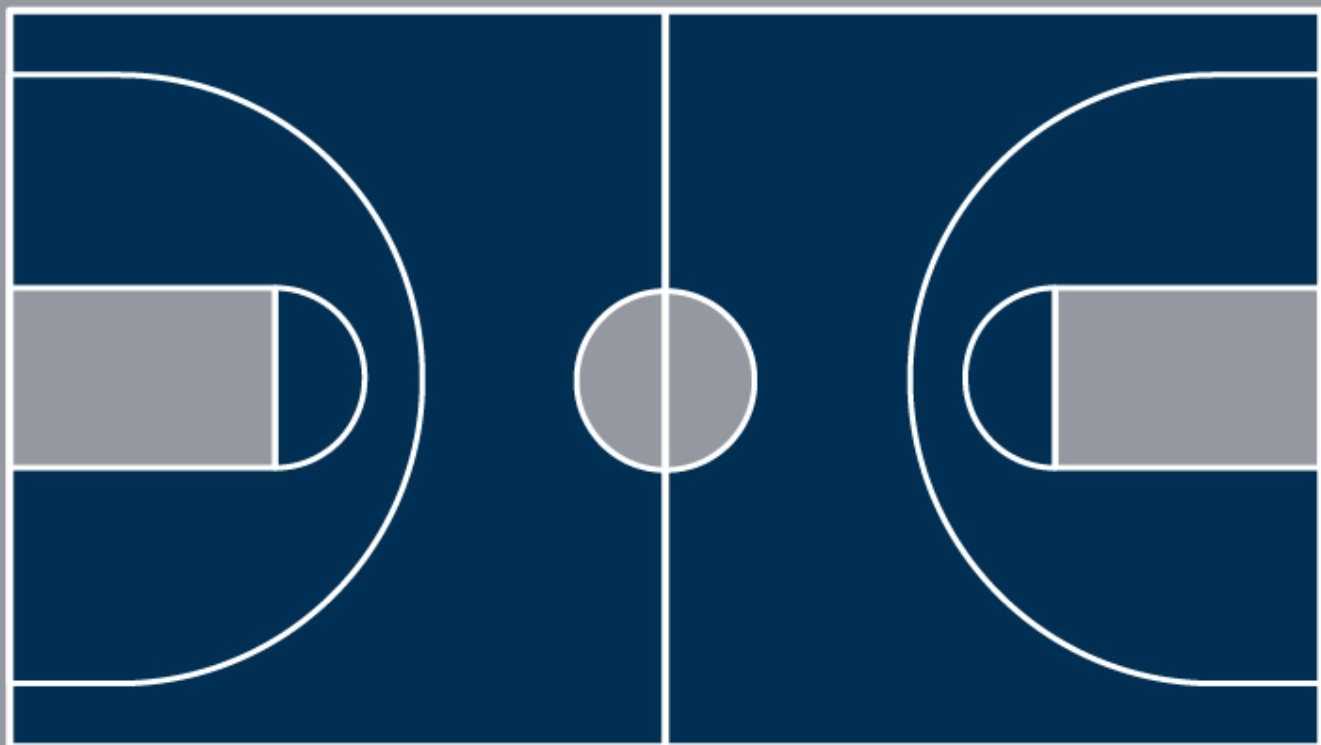
Pole shall be constructed of 5 9/16" outside diameter schedule 40 structural pipe and have a hot dipped galvanized finish. Design shall be a bent gooseneck style and allow for a 48" bury into the ground and a 72" extension from the front of the pole to the face of the backboard. Two 1 5/8" diameter, 13 ga. flow coated galvanized tubular braces shall support the top of the backboard and connect directly to the pole. Pole shall be designed so that the rim mounts directly to the horizontal pole section through the backboard to eliminate stress on the backboard during play. Pole systems without backboard support braces shall not be considered equal. Pole shall carry a limited lifetime warranty. Backboard shall be 42" x 72" and constructed of 1/2" clear unbreakable polycarbonate with a limited lifetime warranty. Polycarbonate shall be framed with aluminum extrusions with 7 ga. steel corner brackets and have a white border and shooters square. A tubular sub-frame shall be mounted to the rear of the backboard to provide support at the rim mounting location and provide threaded inserts for brace attachment on gooseneck playground systems. Backboard shall accept rims with 5" x 4" mounting pattern. Backboard shall carry a lifetime limited warranty. Rim shall be of a flexible type so as to absorb the player contact. Spring action shall be provided by a compression spring. Rim shall have a one-piece continuous wire net attachment system to accept nylon net (included). The rim shall be of an institutional quality with all structural components being no less than 3/16" thick. The ring shall be an official size 5/8" AISI 1018 cold drawn carbon steel and be supported by a 3/16" x 1 1/2" rim support that is welded around 180° of the bottom of the ring. A steel coverplate must enclose all internal mechanism. Rim shall be punched to mount on any front mount backboard, have a 1-year limited warranty and an orange powder coated finish. Mounting hardware shall be included. Rim shall be made in the USA. Installation to be completed in accordance with manufacturer's instructions. Do not scale drawings. Entire system shall weigh approximately 500#.



PRODUCT SPECIFICATION

PR74 MEGA-DUTY UNBREAKABLE POLYCARBONATE PLAYGROUND SYSTEM

REVISED 7/11/17



SportMaster[®]
SPORT SURFACES



ACRYLIC RESURFACER TDS

1.0 General Description

ACRYTECH Acrylic Resurfacer is a 100% Acrylic Latex Emulsion Concentrate. Acrylic Resurfacer is intended for new and existing asphalt or concrete based tennis courts, basketball courts, running tracks, volleyball courts, and other recreational surfaces. Acrylic Resurfacer is highly resistant to wear and ultra-violet degradation and does not contain any asbestos, lead or mercury. Colors: Black, Neutral.

2.0 Safety Guidelines

Avoid contact with eyes, skin and clothing. Refer to Safety Data Sheet for additional information. Wear proper NIOSH approved respirator when handling silica sand.

3.0 Storage and Handling

Protect from freezing. Store between 4°C (40°F) and 32°C (90°F).

Packaging: 55 gallon drum (560 lbs.), 30 gallon drum (300 lbs.), 5 gallon pail (53 lbs.). Drums are heavy, use caution when moving.

4.0 Coverage

Varies by surface condition and porosity.

4.1 Uncoated new surface

- a. 1st coat: .07-.09 gallons of concentrate per square yard.
- b. Other coats: .04-.05 gallons of concentrate per square yard.

4.2 Previously coated surface: .04-.05 gallons of concentrate per square yard per coat.

5.0 Preparation Guidelines

5.1 New Construction (asphalt)

- a. Allow asphalt to cure a minimum of 14 days.
- b. Flood surface with water to check for depressions 1/16" or greater. Fill with ACRYTECH Sport Patch (Deep Patch) as needed and allow to cure.

5.2 New Construction (concrete)

- a. For proper bonding concrete should have a broom finish and a vapor barrier installed.

- b. Allow concrete to cure a minimum of 30 days
- c. Acid bath concrete using muriatic acid. Follow manufacturers' recommendations
- d. Flood surface with water to check for depressions 1/16" or greater. Fill with ACRYTECH Sport Patch (Deep Patch) as needed.
- e. Seal concrete with ACRYTECH Concrete Sealer.

5.3 Existing Construction (asphalt or concrete)

- a. Pressure wash surface to remove dirt, mildew and other contaminants.
- b. Fill cracks with ACRYTECH Sport Patch (Deep Patch) or other crack repair method.

6.0 Mixing Instructions

27.5 gal Acrylic Resurfacer concentrate

Filling Power	Greater Filling (e.g. New asphalt)	Standard Filling
Sand Grade	80 mesh	80 mesh
Sand Qty	250 pounds	200 pounds
Water	15-18 gallons	15-18 gal

7.0 Application

7.1 Apply with soft rubber squeegee.

- a. Apply one coat of Acrylic Resurfacer.
- b. If a second coat is required, apply perpendicular to the first.

8.0 Limitations

DO NOT APPLY WHEN:

1. Rain is in the near forecast.
2. Surface temperatures exceed 54°C (130°F). Surface temperatures may be reduced by misting surface with water prior to application.
3. Do not apply when ambient air temperatures are below 10°C (50°F).

9.0 Physical Properties

Warranty	2 years
Colors	2
Weight per gallon	9.5 lbs
Application and curing Temp	50-130°F
Average dry time	2 - 4 hours
Cure time before use (min)	72 hrs

A product of Stegas, Inc.
www.tennispaint.com | 888-294-0428
 2660 Easterly Place | Decatur, GA 30035



COLORGUARD TDS

1.0 General Description

ACRYTECH Colorguard (Made in America since 1995) is a 100% Acrylic Latex Emulsion Concentrate Surfacing System designed to be a playing surface for asphalt or concrete based tennis courts, basketball courts, running tracks, volleyball courts, and other recreational surfaces. ACRYTECH Colorguard is highly resistant to wear and ultra-violet degradation and does not contain any asbestos, lead or mercury.

ACRYTECH Colorguard is available in two forms, a concentrate, where sand is added on site and pre-mixed (sand factory added at the rate to achieve a Medium court pace). The speed of play is directly related to the size of sand and sand content. Less sand results in a faster speed of play. Larger sand results in a slower speed of play. See 7.0 for speed of play adjustments.

ACRYTECH Colorguard colors: Beige, Bright Red, Competition Blue, Competition Green, Forest Green, Gray, Light Blue, Medium Green, Maroon, Pro Blue, Pro Green, Purple, Red, Standard Blue, and Terra Cotta. Custom colors are available upon request.

2.0 Safety Guidelines

Avoid contact with eyes, skin and clothing. Refer to MSDS for additional information.
Wear proper NIOSH approved respirator when handling silica sand.

3.0 Storage and Handling

Protect from freezing. Store between 4°C (40°F) and 32°C (90°F).
Packaging: 55 gallon drum (560 lbs.), 30 gallon drum (300 lbs.), 5 gallon pail (53 lbs.). Drums are heavy.
Use caution when moving.

4.0 Coverage

Coverage varies upon surface condition and porosity.
Texture coat: .04-.05 gal of concentrate per square yard.
Finish coat (top layer on inline skating surface): .03-.04 gal of concentrate per square yard.

5.0 Preparation Guidelines

5.1 New Construction (asphalt)

- a. Allow asphalt to cure a minimum of 14 days.
- b. Flood surface with water to check for depressions 1/16" or greater. Fill with ACRYTECH Sport Patch (Deep Patch) as needed and allow to cure.

5.2 New Construction (concrete)

- a. For proper bonding concrete should have a broom finish and a vapor barrier installed.
- b. Allow concrete to cure a minimum of 30 days.
- c. Acid bath concrete using muriatic acid. Follow manufacturers' recommendations.
- d. Flood surface with water to check for depressions 1/16" or greater. Fill with ACRYTECH Sport Patch (Deep Patch) as needed.
- e. Prime concrete with ACRYTECH Adhesion Promoter.

5.3 Existing Construction (asphalt or concrete)

- a. Pressure wash surface to remove dirt, mildew and other contaminants.
- b. Fill cracks with ACRYTECH Sport Patch (Deep Patch) or other crack repair method.

6.0 Application

6.1 All Surfaces-apply with soft rubber squeegee. Allow 1 to 3 hours for drying time between coats.

- a. Apply one to two coats of Acrylic Resurfacer (rougher surfaces may require two coats).
- d. Apply at least two coats of Colorguard.

7.0 Mixing Instructions

ACRYTECH Acrylic Resurfacer Chart 27.5 gal concentrate - 1 or 2 coats

Filling Power	Greater Filling (e.g. New asphalt)	Standard Filling
Sand Grade	80 mesh	80 mesh
Sand Qty	250 pounds	200 pounds
Water	15-18 gallons	15-18 gal

Provide the Pre-Mixed for
Medium speed of play

ACRYTECH Colorguard Court Speed of Play chart 27.5 gal concentrate - 2 or 3 coats

Speed of Play	Medium-Slow	ITP Medium (standard)	Medium-Fast
Sand Grade	80 mesh	80 mesh (#7)	80 mesh
Sand Qty	225 pounds	200 pounds	150 pounds
Water	15-18 gallons	15-18 gallons	15-18 gallons

8.0 Limitations

DO NOT APPLY WHEN:

1. Rain is in the near forecast.
2. Surface temperatures exceed 54°C (130°F). Surface temperatures may be reduced by misting surface with water prior to application except on the final coat of Colorguard.
3. When ambient air temperatures are or will be below 1°C (34°F) within 48 hours.

9.0 Physical Properties

Warranty	2 years
Weight per gallon	9.8 lbs
Application and curing Temp.	34-130°F
Average dry time	2 - 4 hours
Cure time before use (min)	48 hrs

A product of Stegas, Inc.
www.tennispaint.com | 888-294-0428
2660 Easterly Place | Decatur, GA 30035



CRACK FILLER TDS

ACRYTECH Crack Filler is a 100% acrylic latex based, tinted, high solids filler. Available in all standard colors, Crack Filler is intended to temporarily repair cracks up to ½” during playing season until a complete resurfacing can be completed.

Crack Filler has a working time of approximately 5-10 minutes.

1.0 SCOPE

For use on all foot traffic based asphalt and concrete surface cracks under ½”.

2.0 PREPARATION

Clean crack of debris, loose dirt, oil or grease using pressurized air or a pressure washer. Crack must be dry prior to application.

3.0 APPLICATION

- 3.1** Hand fill cracks with a straight edge, trowel or spatula
- 3.2** Wipe crack filler from edges with a damp cloth to remove build up
- 3.3** Allow 24 hours for curing. Very deep patches may require longer curing time.
- 3.4** Sand or scrape rough edges as needed.

4.0 COVERAGE

Varies depending on the dimensions of the crack. 1 gallon fills crack 20’ long x ½” wide x 2” deep.

5.0 LIMITATIONS

Deep Crack Filler applications in extremely hot weather can experience a false curing. The surface will skim over and the repair will appear to be hard in a matter of hours. Caution should be taken to ensure that the repair has cured throughout, estimated at 24 hours. Do not apply when temperatures are under 50°F or rain is expected within 24 hours.

6.0 PHYSICAL PROPERTIES

Colors	10 standard
Weight per gallon	15 lbs
Solids Content, %	85

A product of Stegas, Inc.

www.tennispaint.com | 888-294-0428

2660 Easterly Place | Decatur, GA 30035



SPORT PATCH TDS

AcryTech Sport Patch is a 100% acrylic latex binder, that when mixed with portland cement and sand, produces a semi flexible latex concrete that is ideal for patching depressions over 1/4" deep and filling cracks larger than 3/8" wide. AcryTech Sport Patch is appropriate for use when applied to asphalt or concrete surfaces, or to previously coated surfaces.

AcryTech Sport Patch is quick drying and has a working time of approximately 30-45 minutes. Please be careful to mix only the amount that can be applied in that time span.

1.0 SCOPE

Mix with sand and cement to form a patching compound for filling depressions greater than 1/4" in depth, or to fill cracks larger than 3/8" in width.

2.0 MATERIALS

2.1 AcryTech Sport Patch

2.2 Sand

2.3 Portland Cement

3.0 MIXING

3.1 Mix sand and cement first, then add ASP and mix again.

3.2	ASP	Type 1 Port. Cem.	Sand
	1 Gal	1/3 Gal	33 lb.

4.0 APPLICATION

4.1 Apply with squeegee, straight edge, trowel or spatula.

4.2 Scrape edges of patch with scraper or sand edges of patch with grinding stone.

4.3 Allow 24 hours for curing. Very deep patches 3/4"-1" may require longer curing time.

5.0 LIMITATIONS

Deep patch applications in extremely hot weather can experience a false curing. The surface will skim over and the patch will appear to be hard in a matter of hours. Caution should be taken to ensure that the patch has cured throughout, estimated at 24 hours. Do not apply when temperatures are under 50°F or rain is expected within 24 hours.

6.0 PHYSICAL PROPERTIES

Color	Milky White
Weight per gallon	8.8 lbs
Application & curing temp.	50-130°F
Cure time (min)	24 hours

A product of Stegas, Inc.

www.tennispaint.com | 888-294-0428
2660 Easterly Place | Decatur, GA 30035