

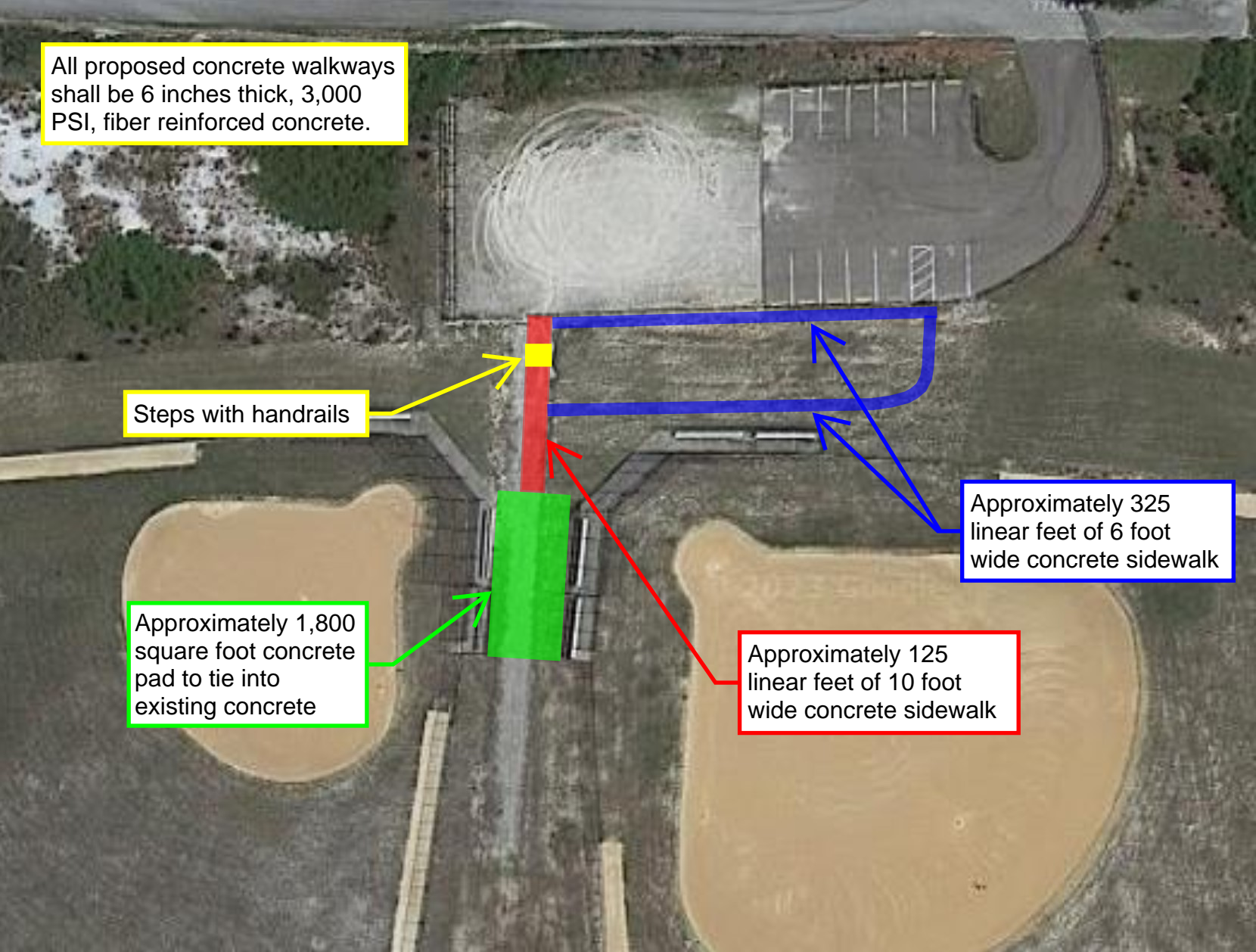
All proposed concrete walkways shall be 6 inches thick, 3,000 PSI, fiber reinforced concrete.

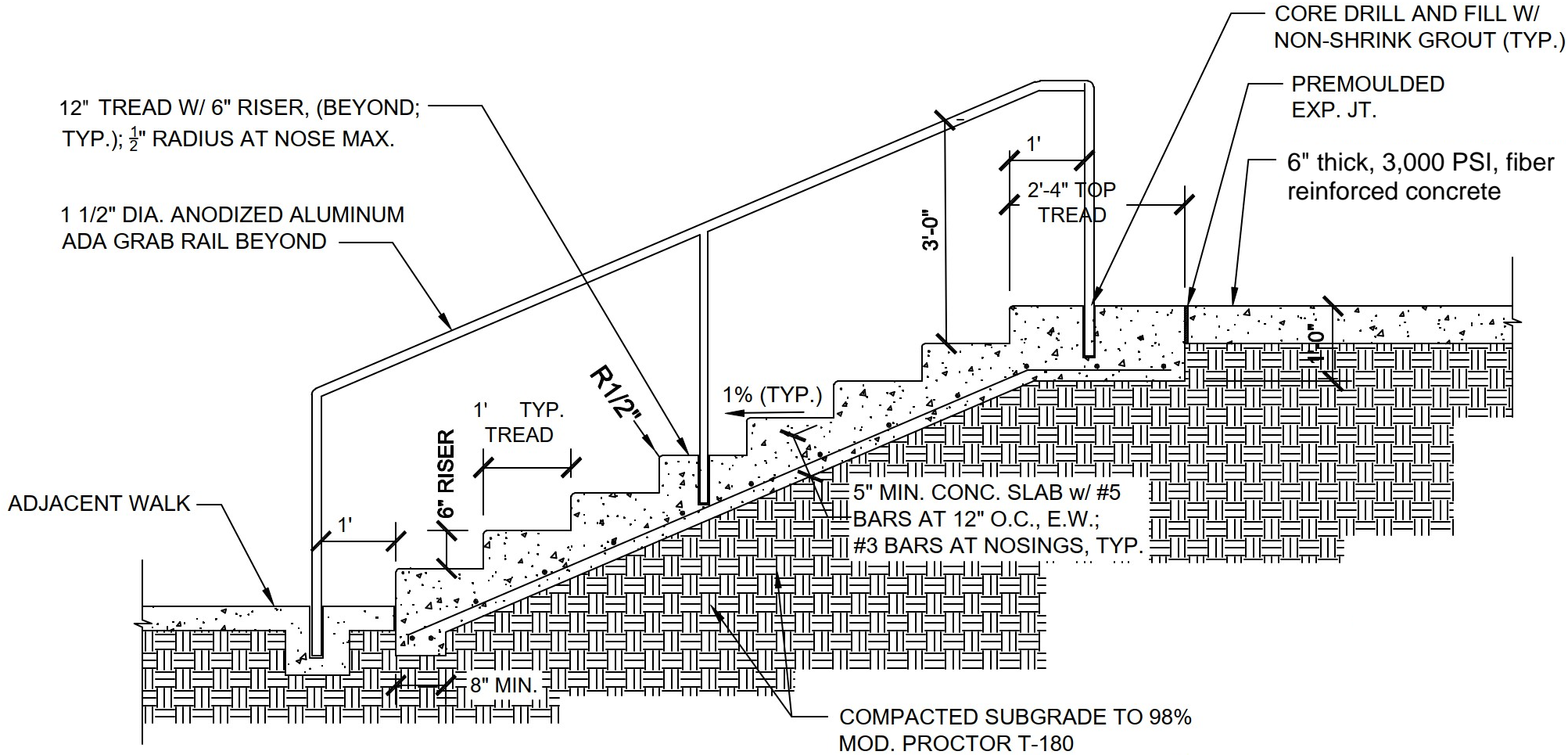
Steps with handrails

Approximately 1,800 square foot concrete pad to tie into existing concrete

Approximately 125 linear feet of 10 foot wide concrete sidewalk

Approximately 325 linear feet of 6 foot wide concrete sidewalk





Concrete step with handrail