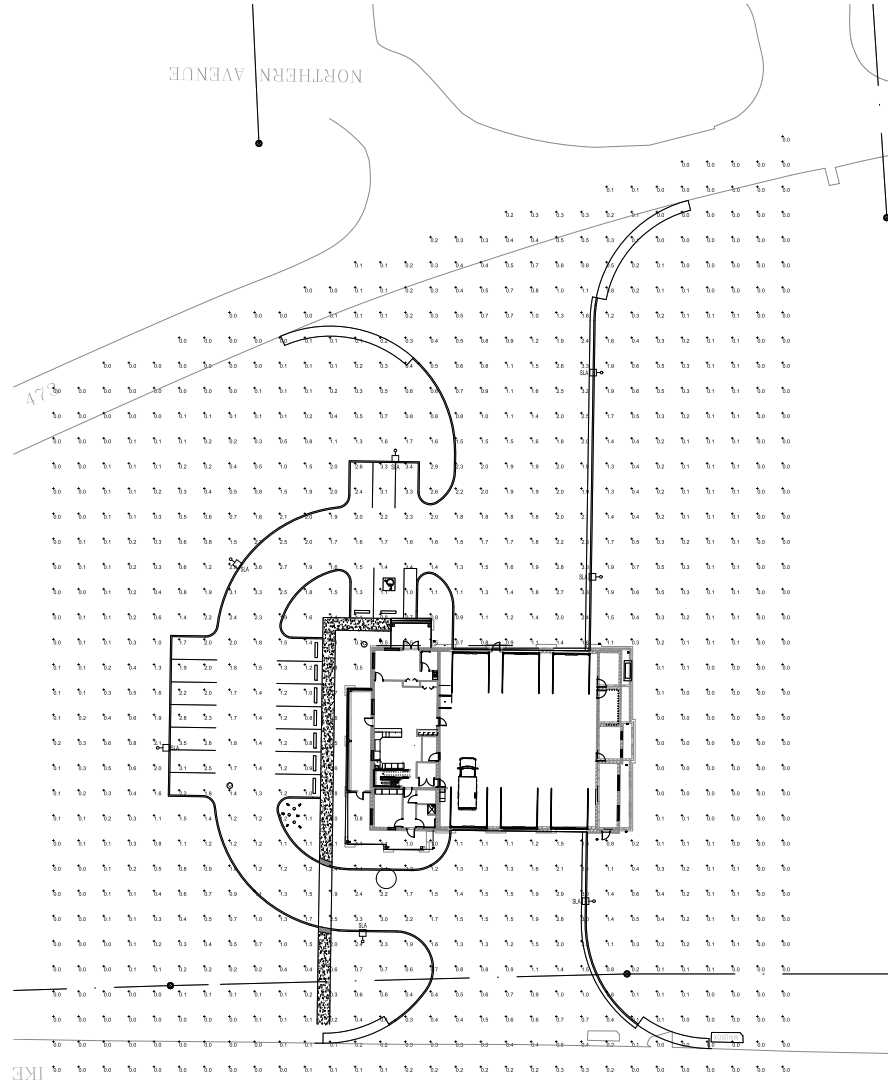


ELECTRICAL SYMBOL LEGEND							
BASIC MATERIALS		FIRE ALARM / DETECTION SYSTEM		VOICE AND DATA RACEWAY SYSTEM		ABBREVIATIONS (CONT.)	
SYMBOL	DESCRIPTION	SYMBOL	DESCRIPTION	SYMBOL	DESCRIPTION	SYMBOL	DESCRIPTION
LEGEND ABBREVIATIONS							
IC	POLE-THRU WITH 1" CORE DRILL	MANHOLE					
IC	POLE-THRU WITH 1" CORE DRILL	PULLBOX					
IG	FOUR-GANG FLOOR BOX	HANDHOLE					
IG	SIX-GANG FLOOR BOX	TRANSFORMER					
IG	FOUR-GANG FLOOR BOX						
C	RECEPTACLE CONTROLLED PER ABMAE # 12016; PROVIDE POWER PACK FOR RECEPTACLE CIRCUIT TO BE CONTROLLED THROUGH LOCAL ROOM OCCUPANCY SENSORS; PROVIDE DEVICE WITH BLUE DOT FOR UNIVERSAL POWER SYMBOL.						
ETR	EXISTING TO REMAIN						
H	HOSPITAL GRADE						
IG	ISOLATED GROUND (ORANGE DEVICE)						
IK	RELOCATED						
TR	TAMPER RESISTANT						
TR	RECEPTACLE MOUNTED ADJACENT TO TV OUTLET, COORDINATE HEIGHT AS ARCHITECT						
WR	DUPLEX RECEPTACLE WITH (3) USB PORTS						
WR	WEATHERPROOF						
S ₁	SINGLE POLE SWITCH (SUBSCRIPT INDICATES ITEM CONTROLLED)						
S ₂	THREE-WAY SWITCH						
S ₃	FOUR-WAY SWITCH						
S ₄	SINGLE POLE KEY SWITCH						
S ₅	DIGITAL THREE SWITCH WITH WARNING FLASH						
S ₆	WALL MOUNTED DUAL TECHNOLOGY OCCUPANCY SENSOR SWITCH, DUAL BLEND						
S ₇	WALL MOUNTED DUAL TECHNOLOGY OCCUPANCY SENSOR SWITCH, WALL MOUNTED DUAL TECHNOLOGY VACUANCY SENSOR SWITCH						
S ₈	WALL MOUNTED DUAL TECHNOLOGY DIMMING/DC SENSOR SWITCH						
S ₉	LOW VOLTAGE SWITCH						
S ₁₀	LOW VOLTAGE OVERRIDE SWITCH						
S ₁₁	LOW VOLTAGE OVERRIDE SWITCH WITH DIMMING						
S ₁₂	FAN SWITCH						
S ₁₃	MOTOR START SWITCH						
S ₁₄	DIMMER SWITCH, LINE VOLTAGE						
S ₁₅	WALL MOUNTED DUAL TECHNOLOGY OCCUPANCY SENSOR						
S ₁₆	CEILING MOUNTED DUAL TECHNOLOGY OCCUPANCY SENSOR						
S ₁₇	DAT/LIGHT SENSOR WALL MOUNTED						
S ₁₈	DAT/LIGHT SENSOR WALL MOUNTED						
S ₁₉	VACUANCY SENSOR CEILING MOUNTED						
S ₂₀	VACUANCY SENSOR WALL MOUNTED						
S ₂₁	PHOTOCELL, MOUNTED ON ROOF FACING NORTH						
S ₂₂	RECE: ORIGINAL MARKING INDICATED ON ANY DEVICE REPRESENTS DEVICE CONNECTED TO EMERGENCY CIRCUIT (RED DEVICE OR RECEPTACLE TYPICAL FOR ANY DEVICE IN LEGEND)						
S ₂₃	SINGLE RECEPTACLE						
S ₂₄	DUPLEX RECEPTACLE						
S ₂₅	TWO DUPLEX RECEPTACLES (QUAD) WITH COMMON COVERPLATE						
S ₂₆	DUPLEX RECEPTACLE MOUNTED ABOVE COUNTER						
S ₂₇	TWO DUPLEX RECEPTACLES (QUAD) WITH COMMON COVER MOUNTED ABOVE COUNTER						
S ₂₈	DUPLEX RECEPTACLE WITH RECEPTACLE ON SEPARATE CIRCUIT (PROVIDE BREAKER WITH 1 POLE COMMON TRIP HANDLE)						
S ₂₉	SPLIT-WIRED CONTROLLED DUPLEX RECEPTACLE						
S ₃₀	LED RECEPTACLE, "WP" INDICATES GAST METAL "IN USE" WALL MOUNTED COVER, WEATHER-RESISTANT LISTED						
S ₃₁	TWO GFI DUPLEX RECEPTACLES (QUAD) WITH COMMON COVERPLATE						
S ₃₂	GFI RECEPTACLE MOUNTED ABOVE COUNTER						
S ₃₃	DUPLEX RECEPTACLE, CEILING MOUNTED						
S ₃₄	TWO DUPLEX RECEPTACLES (QUAD) WITH COMMON COVERPLATE, CEILING MOUNTED						
S ₃₅	RECESSED, MOUNTED DUPLEX RECEPTACLE						
S ₃₆	FLOOR BOX WITH DUPLEX RECEPTACLE WITH APPROPRIATE FLANGE						
S ₃₇	FLOOR BOX, TWO DUPLEX RECEPTACLES WITH APPROPRIATE FLANGE						
S ₃₈	MULTI-SERVICE FLOOR BOX WITH DUPLEX RECEPTACLE, VOICE/ALARM DEVICES REFER TO TECHNOLOGY DRAWINGS OR OWNER'S VENDOR DRAWINGS FOR LOW VOLTAGE REQUIREMENTS)						
S ₃₉	MULTI-SERVICE FLOOR BOX WITH DUPLEX RECEPTACLES (QUAD), VOICE/ALARM DEVICES REFER TO TECHNOLOGY DRAWINGS OR OWNER'S VENDOR DRAWINGS FOR LOW VOLTAGE REQUIREMENTS)						
S ₄₀	MULTI-SERVICE POWER A DATA FLOOR BOX WITH FURNITURE FEED CONNECTION (REFER TO TECHNOLOGY DRAWINGS OR OWNER'S VENDOR DRAWINGS FOR LOW VOLTAGE REQUIREMENTS)						
S ₄₁	SPECIAL PURPOSE RECEPTACLE, NEMA CONFIGURATION AS NOTED						
S ₄₂	JUNCTION BOX WALL MOUNTED						
S ₄₃	RECESSED, MOUNTED ON OR ABOVE CEILING OR IN STRUCTURE						
S ₄₄	WALL MOUNTED FURNITURE FEED POWER CONNECTION						
S ₄₅	POWER POLE WITH POWER & DATA FURNITURE FEED POWER CONNECTION						
S ₄₆	POWER POLE WITH POWER & DATA DUTIES						
S ₄₇	MULTI-SERVICE FLOOR BOX WITH INTEGRAL DUPLEX RECEPTACLES AND VOICE/ALARM DEVICES REFER TO TECHNOLOGY DRAWINGS OR OWNER'S VENDOR DRAWINGS FOR LOW VOLTAGE REQUIREMENTS)						
S ₄₈	MULTI-SERVICE POWER A DATA FLOOR BOX WITH FURNITURE FEED CONNECTION (REFER TO TECHNOLOGY DRAWINGS OR OWNER'S VENDOR DRAWINGS FOR LOW VOLTAGE REQUIREMENTS)						
S ₄₉	GROUND BUS BAR, COPPER						
S ₅₀	SURGE PROTECTIVE DEVICE						
S ₅₁	SHUNT TRIP PROTECTION, SEMI-FLUSH WALL MOUNTED UNLESS OTHERWISE NOTED; NEMA 3R FOR EXTERIOR LOCATIONS						
S ₅₂	EMERGENCY POWER OFF (EPO) WITH PUSHBUTTON, RED MUSHROOM HEAD, CLEAR LEXAN PROTECTIVE COVER						
S ₅₃	OVERHAUL DOOR PUSHBUTTON CONTROL STATION						
S ₅₄	MOTORIZED SWAPPER CONNECTION						
S ₅₅	VARIABLE FREQUENCY DRIVE						
S ₅₆	DIRECT DIGITAL CONTROL PANEL						
S ₅₇	BUILDING AUTOMATION SYSTEM CONTROL PANEL						
S ₅₈	LIGHTING CONTROL PANEL						
ME ₁	MANUAL LEAVE						
ME ₂	MANUAL PULL STATION						
ME ₃	CEILING SMOKE DETECTOR, PHOTOELECTRIC TYPE UNLESS OTHERWISE NOTED						
ME ₄	ELEVATOR WITH RECALL CONTACTS						
ME ₅	CO - COORDINATION SMOKE/CHARCOAL MONITORING DETECTION						
ME ₆	DUCT SMOKE DETECTOR						
ME ₇	BEAM SMOKE DETECTOR						
ME ₈	BEAM SMOKE DETECTOR RECEIVER						
ME ₉	HEAT DETECTOR 120V FUSED TEMPERATURE, UNLESS OTHERWISE NOTED, CEILING MOUNTED						
ME ₁₀	SUPERVISED ADDRESSABLE FIRE ALARM CONTROL, RELAY						
ME ₁₁	DUCT SMOKE DETECTOR MOUNTED TEST SWITCH WITH MOUNTING LAMP, WALL MOUNTED AT 48" AFF, UNLESS OTHERWISE NOTED						
ME ₁₂	COMBINATION SPEAKER/STROBE, WALL MOUNTED, 7500 UNLESS OTHERWISE NOTED						
ME ₁₃	HORN ONLY, WALL MOUNTED						
ME ₁₄	STROBE, CEILING MOUNTED, 7500 UNLESS OTHERWISE NOTED						
ME ₁₅	CEILING MOUNTED, 7500 UNLESS OTHERWISE NOTED						
ME ₁₆	CEILING MOUNTED, 7500 UNLESS OTHERWISE NOTED						
ME ₁₇	CEILING MOUNTED, 7500 UNLESS OTHERWISE NOTED						
ME ₁₈	CEILING MOUNTED, 7500 UNLESS OTHERWISE NOTED						
ME ₁₉	CEILING MOUNTED, 7500 UNLESS OTHERWISE NOTED						
ME ₂₀	CEILING MOUNTED, 7500 UNLESS OTHERWISE NOTED						
ME ₂₁	CEILING MOUNTED, 7500 UNLESS OTHERWISE NOTED						
ME ₂₂	CEILING MOUNTED, 7500 UNLESS OTHERWISE NOTED						
ME ₂₃	CEILING MOUNTED, 7500 UNLESS OTHERWISE NOTED						
ME ₂₄	CEILING MOUNTED, 7500 UNLESS OTHERWISE NOTED						
ME ₂₅	CEILING MOUNTED, 7500 UNLESS OTHERWISE NOTED						
ME ₂₆	CEILING MOUNTED, 7500 UNLESS OTHERWISE NOTED						
ME ₂₇	CEILING MOUNTED, 7500 UNLESS OTHERWISE NOTED						
ME ₂₈	CEILING MOUNTED, 7500 UNLESS OTHERWISE NOTED						
ME ₂₉	CEILING MOUNTED, 7500 UNLESS OTHERWISE NOTED						
ME ₃₀	CEILING MOUNTED, 7500 UNLESS OTHERWISE NOTED						
ME ₃₁	CEILING MOUNTED, 7500 UNLESS OTHERWISE NOTED						
ME ₃₂	CEILING MOUNTED, 7500 UNLESS OTHERWISE NOTED						
ME ₃₃	CEILING MOUNTED, 7500 UNLESS OTHERWISE NOTED						
ME ₃₄	CEILING MOUNTED, 7500 UNLESS OTHERWISE NOTED						
ME ₃₅	CEILING MOUNTED, 7500 UNLESS OTHERWISE NOTED						
ME ₃₆	CEILING MOUNTED, 7500 UNLESS OTHERWISE NOTED						
ME ₃₇	CEILING MOUNTED, 7500 UNLESS OTHERWISE NOTED						
ME ₃₈	CEILING MOUNTED, 7500 UNLESS OTHERWISE NOTED						
ME ₃₉	CEILING MOUNTED, 7500 UNLESS OTHERWISE NOTED						
ME ₄₀	CEILING MOUNTED, 7500 UNLESS OTHERWISE NOTED						
ME ₄₁	CEILING MOUNTED, 7500 UNLESS OTHERWISE NOTED						
ME ₄₂	CEILING MOUNTED, 7500 UNLESS OTHERWISE NOTED						
ME ₄₃	CEILING MOUNTED, 7500 UNLESS OTHERWISE NOTED						
ME ₄₄	CEILING MOUNTED, 7500 UNLESS OTHERWISE NOTED						
ME ₄₅	CEILING MOUNTED, 7500 UNLESS OTHERWISE NOTED						
ME ₄₆	CEILING MOUNTED, 7500 UNLESS OTHERWISE NOTED						
ME ₄₇	CEILING MOUNTED, 7500 UNLESS OTHERWISE NOTED						
ME ₄₈	CEILING MOUNTED, 7500 UNLESS OTHERWISE NOTED						
ME ₄₉	CEILING MOUNTED, 7500 UNLESS OTHERWISE NOTED						
ME ₅₀	CEILING MOUNTED, 7500 UNLESS OTHERWISE NOTED						
ME ₅₁	CEILING MOUNTED, 7500 UNLESS OTHERWISE NOTED						
ME ₅₂	CEILING MOUNTED, 7500 UNLESS OTHERWISE NOTED						
ME ₅₃	CEILING MOUNTED, 7500 UNLESS OTHERWISE NOTED						
ME ₅₄	CEILING MOUNTED, 7500 UNLESS OTHERWISE NOTED						
ME ₅₅	CEILING MOUNTED, 7500 UNLESS OTHERWISE NOTED						
ME ₅₆	CEILING MOUNTED, 7500 UNLESS OTHERWISE NOTED						
ME ₅₇	CEILING MOUNTED, 7500 UNLESS OTHERWISE NOTED						
ME ₅₈	CEILING MOUNTED, 7500 UNLESS OTHERWISE NOTED						
ME ₅₉	CEILING MOUNTED, 7500 UNLESS OTHERWISE NOTED						
ME ₆₀	CEILING MOUNTED, 7500 UNLESS OTHERWISE NOTED						
ME ₆₁	CEILING MOUNTED, 7500 UNLESS OTHERWISE NOTED						
ME ₆₂	CEILING MOUNTED, 7500 UNLESS OTHERWISE NOTED						
ME ₆₃	CEILING MOUNTED, 7500 UNLESS OTHERWISE NOTED						
ME ₆₄	CEILING MOUNTED, 7500 UNLESS OTHERWISE NOTED						
ME ₆₅	CEILING MOUNTED, 7500 UNLESS OTHERWISE NOTED						
ME ₆₆	CEILING MOUNTED, 7500 UNLESS OTHERWISE NOTED						
ME ₆₇	CEILING MOUNTED, 7500 UNLESS OTHERWISE NOTED						
ME ₆₈	CEILING MOUNTED, 7500 UNLESS OTHERWISE NOTED						
ME ₆₉	CEILING MOUNTED, 7500 UNLESS OTHERWISE NOTED						
ME ₇₀	CEILING MOUNTED, 7500 UNLESS OTHERWISE NOTED						
ME ₇₁	CEILING MOUNTED, 7500 UNLESS OTHERWISE NOTED						
ME ₇₂	CEILING MOUNTED, 7500 UNLESS OTHERWISE NOTED						
ME ₇₃	CEILING MOUNTED, 7500 UNLESS OTHERWISE NOTED						
ME ₇₄	CEILING MOUNTED, 7500 UNLESS OTHERWISE NOTED						
ME ₇₅	CEILING MOUNTED, 7500 UNLESS OTHERWISE NOTED						
ME ₇₆	CEILING MOUNTED, 7500 UNLESS OTHERWISE NOTED						
ME ₇₇	CEILING MOUNTED, 7500 UNLESS OTHERWISE NOTED						
ME ₇₈	CEILING MOUNTED, 7500 UNLESS OTHERWISE NOTED						
ME ₇₉	CEILING MOUNTED, 7500 UNLESS OTHERWISE NOTED						
ME ₈₀	CEILING MOUNTED, 7500 UNLESS OTHERWISE NOTED						
ME ₈₁	CEILING MOUNTED, 7500 UNLESS OTHERWISE NOTED						
ME ₈₂	CEILING MOUNTED, 7500 UNLESS OTHERWISE NOTED						
ME ₈₃	CEILING MOUNTED, 7500 UNLESS OTHERWISE NOTED						
ME ₈₄	CEILING MOUNTED, 7500 UNLESS OTHERWISE NOTED						
ME ₈₅	CEILING MOUNTED, 7500 UNLESS OTHERWISE NOTED						
ME ₈₆	CEILING MOUNTED, 7500 UNLESS OTHERWISE NOTED						
ME ₈₇	CEILING MOUNTED, 7500 UNLESS OTHERWISE NOTED						
ME ₈₈	CEILING MOUNTED, 7500 UNLESS OTHERWISE NOTED						
ME ₈₉	CEILING MOUNTED, 7500 UNLESS OTHERWISE NOTED						
ME ₉₀	CEILING MOUNTED, 7500 UNLESS OTHERWISE NOTED						
ME ₉₁	CEILING MOUNTED, 7500 UNLESS OTHERWISE NOTED						
ME ₉₂	CEILING MOUNTED, 7500 UNLESS OTHERWISE NOTED						
ME ₉₃	CEILING MOUNTED, 7500 UNLESS OTHERWISE NOTED						
ME ₉₄	CEILING MOUNTED, 7500 UNLESS OTHERWISE NOTED						
ME ₉₅	CEILING MOUNTED, 7500 UNLESS OTHERWISE NOTED						
ME ₉₆	CEILING MOUNTED, 7500 UNLESS OTHERWISE NOTED						
ME ₉₇	CEILING MOUNTED, 7500 UNLESS OTHERWISE NOTED						
ME ₉₈	CEILING MOUNTED, 7500 UNLESS OTHERWISE NOTED						



1 PHOTOMETRIC SITE PLAN
1" = 20'-0"

This document is the property of KTH Architects, Inc. and is not to be reproduced, stored in a retrieval system, or transmitted in any form or by any means, electronic, mechanical, photocopying, recording, or by any information storage and retrieval system, without the prior written permission of KTH Architects, Inc.

NO.	DESCRIPTION	DATE

STEPHEN B. COTTON, P.E.
REGISTERED PROFESSIONAL ENGINEER
STATE OF FLORIDA
12159222 1234162 PM

John P. Adams, AIA
Jerome Banks, AIA
Jennifer Zaffuto, AIA, LEED, NCARB
Ethel J. Hino, AIA
1111 AVENUE TOWN • SUITE 100 • LEEBURG, FL 34788
888.888.8888 • FAX 352.371.1007 • WWW.KTHARCHITECTS.COM
33601 CR. 433, LEEBURG, FL 34788 • 407.203.8070 • FAX 407.203.8089



20073A

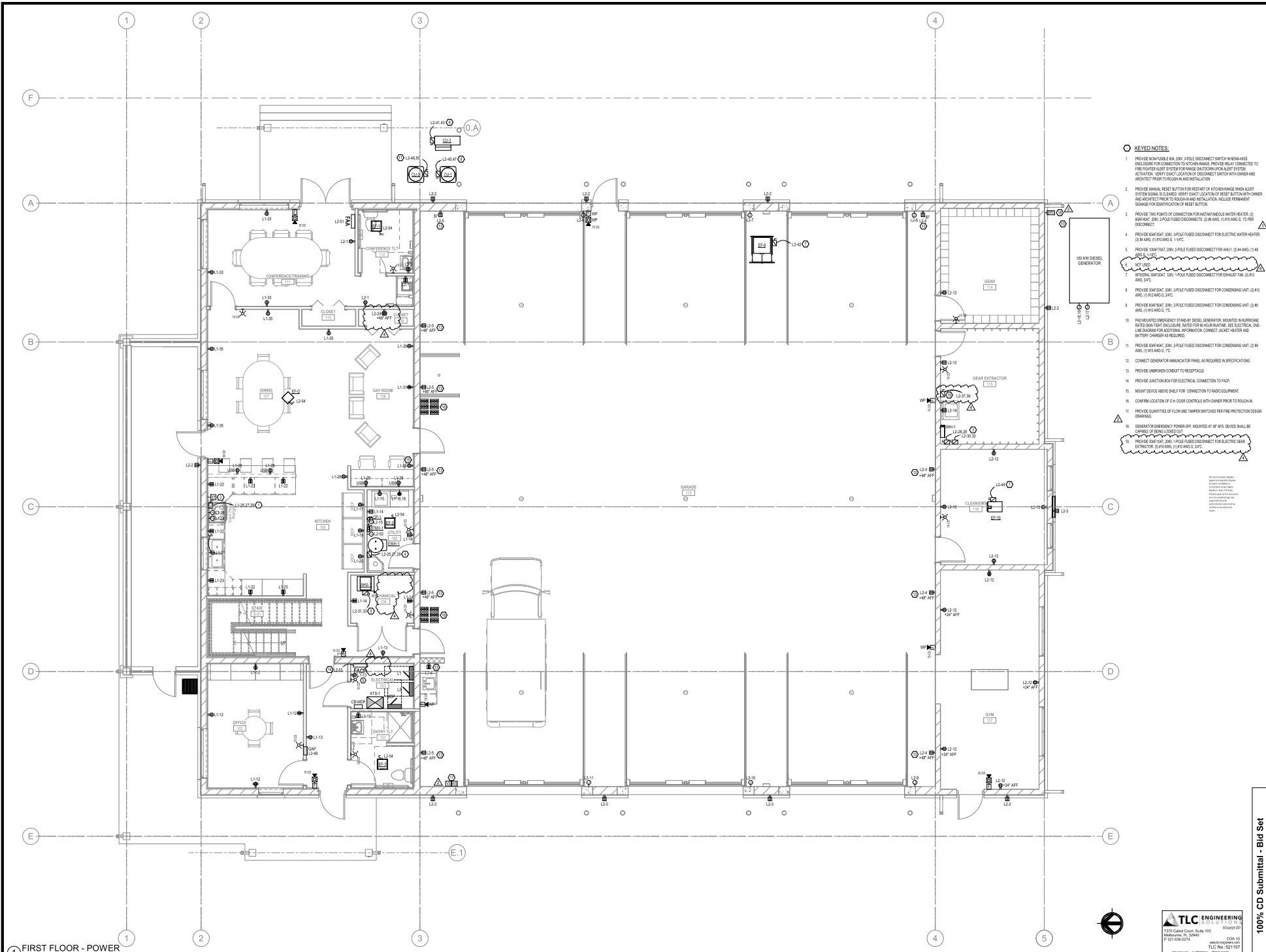
LAKE COUNTY
FIRE STATION NO.71
ELECTRICAL SITE PHOTOMETRICS
NOVEMBER 10, 2021

100% CD Submittal - Bid Set

E0.4



TLC ENGINEERING
1225 Canal Court, Suite 103
Leesburg, FL 33949
P: 352.888.0274
www.tlc-engineering.com
TLC No: 521107
THINK. LISTEN. ENGINEER.



- KEYED NOTES:**
1. PROVIDE IDENTIFIABLE 60A, 250V, 3-POLE DISCONNECT SWITCH IN NEAR-ACCESS ENCLOSURE FOR CONNECTION TO KITCHEN RANGE. PROVIDE RELAY CONNECTED TO FIRE FIGHTER ALERT SYSTEM FOR RANGE SHUTDOWN. PROVIDE ALERT SYSTEM ACTUATOR. VERIFY EXACT LOCATION OF DISCONNECT SWITCH WITH OWNER AND ARCHITECT PRIOR TO INSTALLATION.
 2. PROVIDE MANUAL RESET BUTTON FOR RESET OF KITCHEN RANGE WHEN ALERT SYSTEM SIGNAL IS CLEARED. VERIFY EXACT LOCATION OF RESET BUTTON WITH OWNER AND ARCHITECT PRIOR TO ROOM AND INSTALLATION. INCLUDE PERMANENT SIGNAGE FOR IDENTIFICATION OF RESET BUTTON.
 3. PROVIDE TWO POINTS OF CONNECTION FOR INSTANTANEOUS WATER HEATER (2) BASKET. 200V, 3-POLE FUSED DISCONNECT (2) 40A, 120V, 48V, 1-POLE DISCONNECT.
 4. PROVIDE 200V, 3-POLE FUSED DISCONNECT FOR ELECTRIC WATER HEATER (2) 40A, 120V, 48V, 1-POLE DISCONNECT.
 5. PROVIDE IDENTIFIABLE 200V, 3-POLE FUSED DISCONNECT FOR 40A, 120V, 48V, 1-POLE DISCONNECT.
 6. PROVIDE IDENTIFIABLE 200V, 3-POLE FUSED DISCONNECT FOR 40A, 120V, 48V, 1-POLE DISCONNECT.
 7. PROVIDE IDENTIFIABLE 200V, 3-POLE FUSED DISCONNECT FOR 40A, 120V, 48V, 1-POLE DISCONNECT.
 8. PROVIDE 200V, 3-POLE FUSED DISCONNECT FOR CONDENSING UNIT (2) 40A, 120V, 48V, 1-POLE DISCONNECT.
 9. PROVIDE 200V, 3-POLE FUSED DISCONNECT FOR CONDENSING UNIT (2) 40A, 120V, 48V, 1-POLE DISCONNECT.
 10. PROVIDE 200V, 3-POLE FUSED DISCONNECT FOR CONDENSING UNIT (2) 40A, 120V, 48V, 1-POLE DISCONNECT.
 11. PROVIDE 200V, 3-POLE FUSED DISCONNECT FOR CONDENSING UNIT (2) 40A, 120V, 48V, 1-POLE DISCONNECT.
 12. CONNECT GENERATOR ANNUNCIATOR PANEL AS REQUIRED IN SPECIFICATIONS.
 13. PROVIDE UNBROKEN CONDUIT TO RECEPTACLE.
 14. PROVIDE ANCHOR BOLTS FOR ELECTRICAL CONNECTION TO FLOOR.
 15. MOUNT DEVICE ABOVE SHELF FOR CONNECTION TO WOOD EQUIPMENT.
 16. CONFIRM LOCATION OF CH-DOOR CONTROLS WITH OWNER PRIOR TO ROOMING.
 17. PROVIDE QUANTITIES OF FLOOR AND WALKER SWITCHES PER THE PROTECTION DESIGN DRAWINGS.
 18. GENERATOR EMERGENCY POWER-OFF INDICATED AT 48V AFF DEVICE SHALL BE OPERABLE FROM GENERATOR CONTROL PANEL.
 19. PROVIDE IDENTIFIABLE 200V, 3-POLE FUSED DISCONNECT FOR ELECTRIC CLEAN EXTRACTOR (2) 40A, 120V, 48V, 1-POLE DISCONNECT.

1 FIRST FLOOR - POWER
1/4" = 1'-0"

DATE	1	11/30/22
	2	11/30/22
	3	11/30/22
NO.	1	11/30/22
	2	11/30/22
	3	11/30/22
DESCRIPTION	1	11/30/22
	2	11/30/22
	3	11/30/22

100% CD Submittal - Bid Set

LAKE COUNTY
FIRE STATION NO. 71
ELECTRICAL LEVEL 1 POWER PLAN
33601 CR. 433, LEEBURG, FL 34788

NOVEMBER 10, 2021

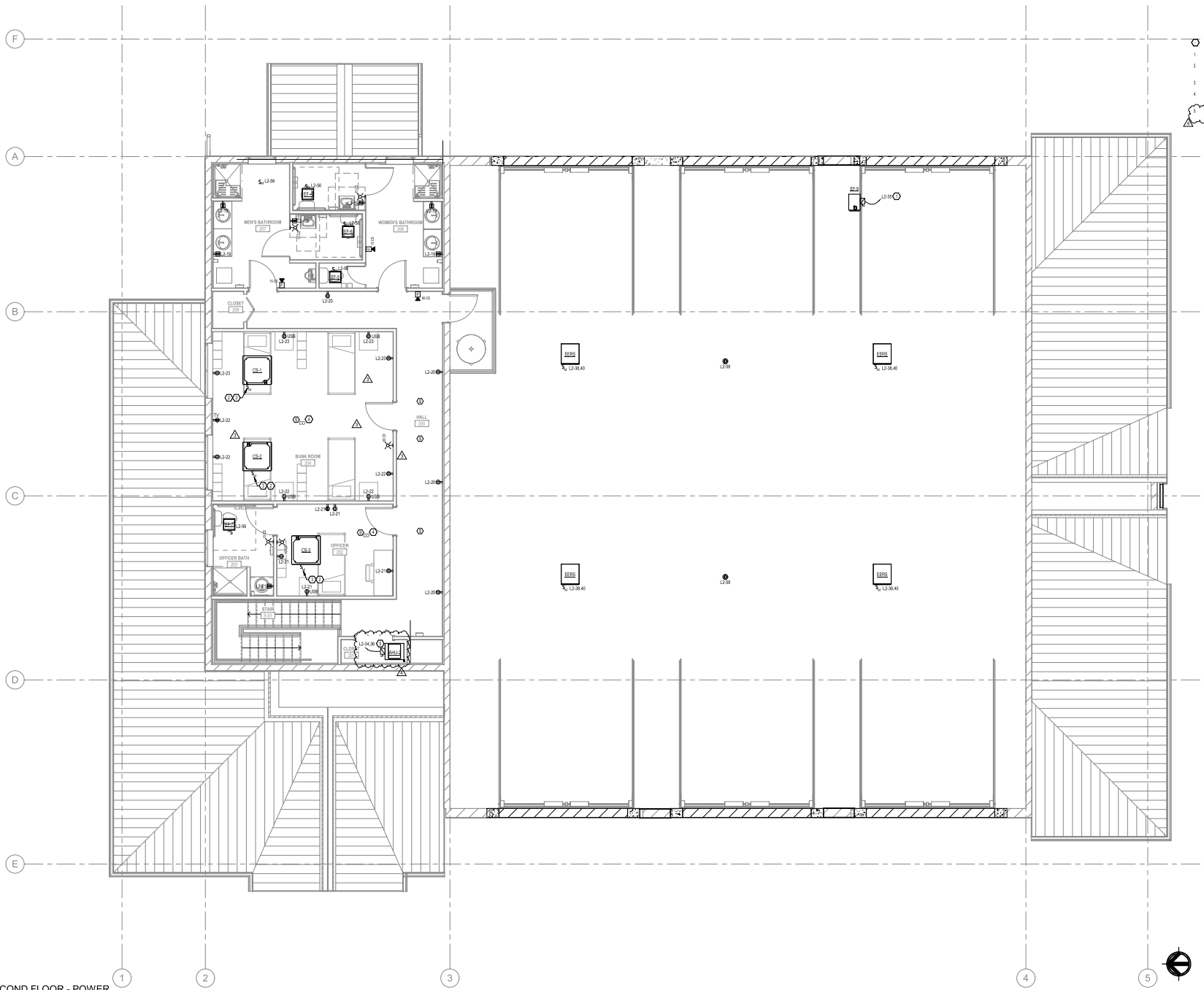
E2.1

100% CD Submittal - Bid Set

TLC ENGINEERING
2700 Central Expressway, Suite 103
Melbourne, FL 32940
PH: 321.836.0274
WWW.TLCENGINEERING.COM
TLC No. 521107
THINK. LISTEN. EVOLVE.

KTH ARCHITECTS
John P. Adams, AIA
Jerome Banker, AIA
Jennifer Zaffuto, AIA, LEED, NCARB
Jennifer Zaffuto, AIA, LEED, NCARB
1100 N. UNIVERSITY AVENUE • SUITE 200 • ORLANDO, FL 32801 • TEL: 407.207.8000 • FAX: 407.207.8000 • AIA AIAA 1999

STEPHEN B. COTTON, P.E.
P.E. LICENSE NO. 12154
12/15/2022 12:34:10 PM



- KEYED NOTES:**
1. INTEGRAL WAFER, 1/4" HOLE PULSED DISCONNECT FOR EF-11 (2) #12 AWG, 24V.
 2. INDOOR UNIT FEED FROM OUTDOOR UNIT (DLS) PROVIDE (3) 1/4" Ø BETWEEN OUTDOOR AND INDOOR UNITS FOR POWER AND CONTROLS.
 3. LOCAL DISCONNECTING MEANS FOR CIGARETTE UNIT.
 4. COMBINATION BIKING CARBON MONOXIDE DETECTOR WITH LOW FREQUENCY BASE FOR BUNKING ROOM.

No work shall be begun until all required permits have been obtained. The contractor shall be responsible for obtaining all necessary permits. The contractor shall be responsible for obtaining all necessary permits. The contractor shall be responsible for obtaining all necessary permits.

NO.	DATE	DESCRIPTION
1	11-30-21	ISSUE FOR PERMIT
2		ISSUE FOR DESIGN AND CONSTRUCTION

STEPHEN B. COTTON, P.E.
FL ENGINEER

John P. Adams, AIA
Jerome Banker, AIA
Jennifer Zarfuto, AIA, LEED, NCARB



100% CD Submittal - Bid Set

LAKE COUNTY
FIRE STATION NO. 71
ELECTRICAL LEVEL 2 POWER PLAN

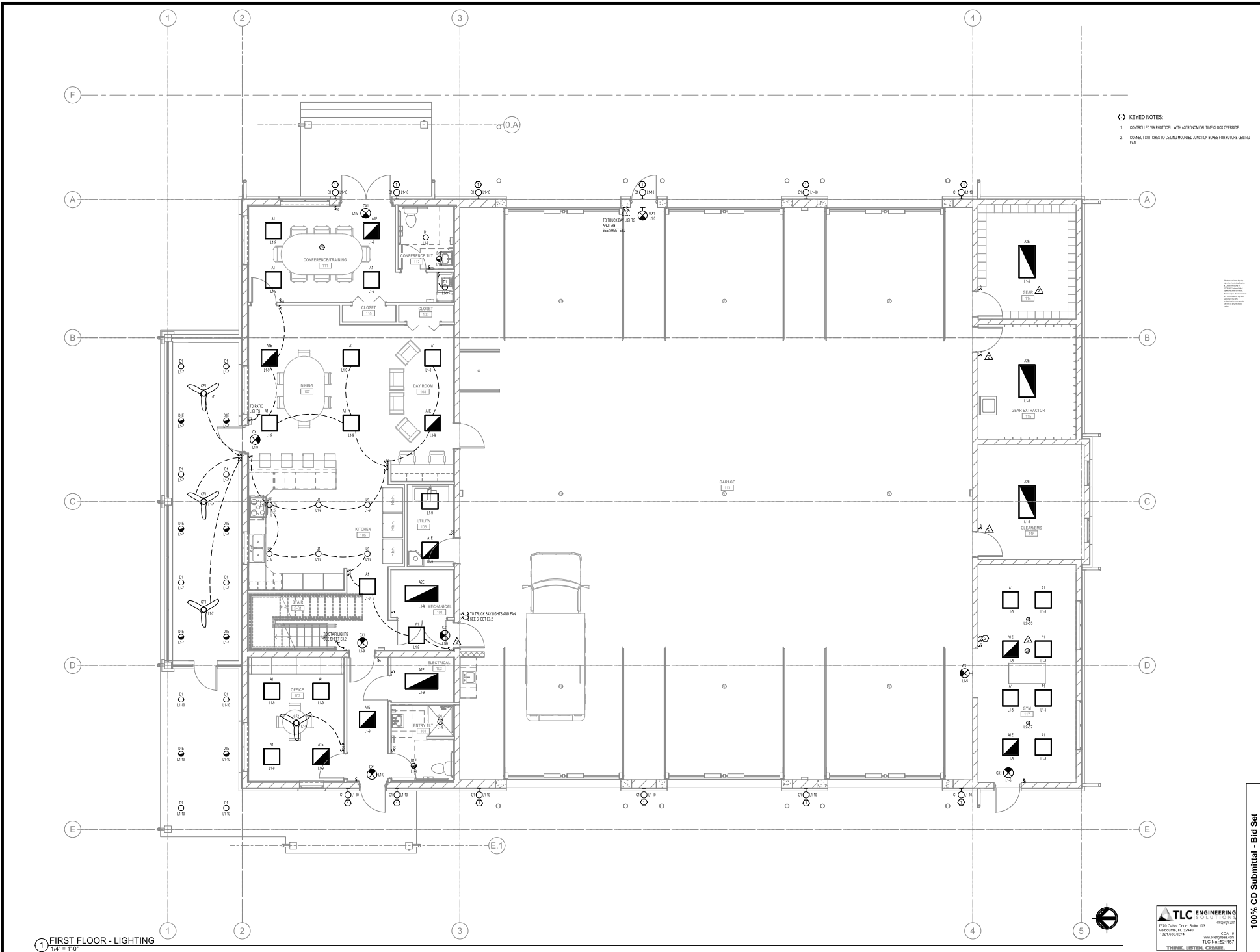
NOVEMBER 10, 2021

33601 CR. 433, LEEBURG, FL 34788

E2.2



1 SECOND FLOOR - POWER
1/4" = 1'-0"



- KEY NOTES**
- CONTROLLED BY PHOTOCELL WITH NETWORKWAL THE CLOCK OVERPICK
 - CONNECT SWITCHES TO CEILING MOUNTED JUNCTION BOXES FOR FUTURE CEILING FAN

1 FIRST FLOOR - LIGHTING
1/4" = 1'-0"

DATE	04/22/21
NO.	1
DESCRIPTION	PERMIT COMMENT RESPONSE
NO.	1
DESCRIPTION	STEPHEN B. COTTON, P.E. P.E. LICENSE NO. 12159-0002-12159-18 PM
NO.	1
DESCRIPTION	John P. Adams, AIA AIA License No. 12159-0002-12159-18 PM Jerome Banker, AIA AIA License No. 12159-0002-12159-18 PM Jennifer Zinfuto, AIA, LEED, NCARB AIA License No. 12159-0002-12159-18 PM 1111 AVENUE TITUS • SUITE 100 • AUSTIN, TX 78701 • P: 512.477.8000 • F: 512.477.8001 • WWW.KTHARCHITECTS.COM 100 NORTH HIGHLAND AVE • ORLANDO, FL • 407.203.8070 • F: 407.203.8089
KTH ARCHITECTS	
LAKE COUNTY FIRE STATION NO. 71 ELECTRICAL LEVEL 1 LIGHTING PLAN	
33601 CR. 433, LEEBURG, FL 34788	
NOVEMBER 10, 2021	
E3.1	



100% CD Submittal - Bid Set

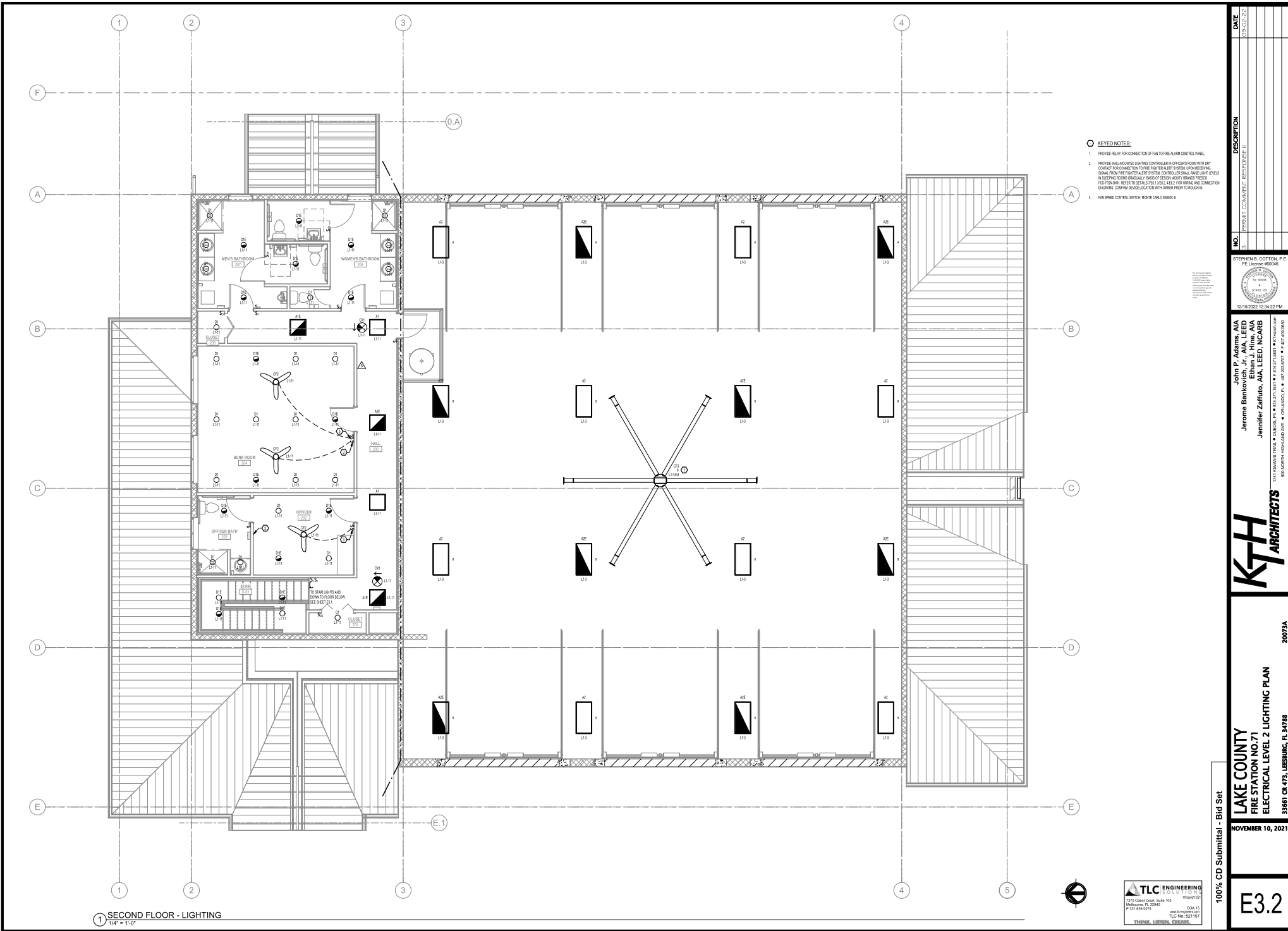
20073A

33601 CR. 433, LEEBURG, FL 34788

NOVEMBER 10, 2021

E3.1

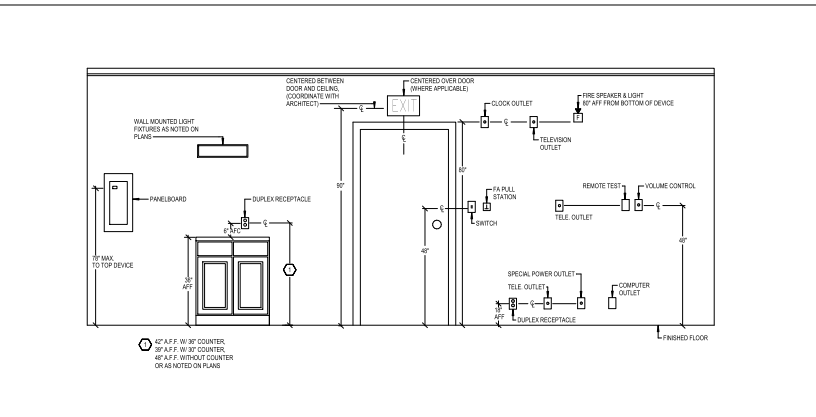
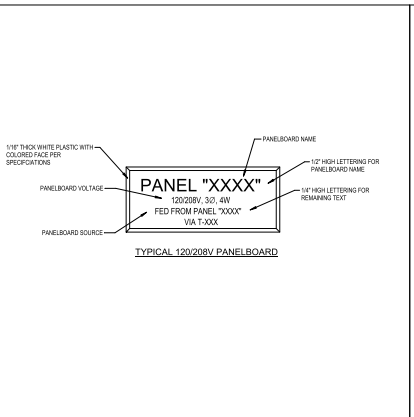
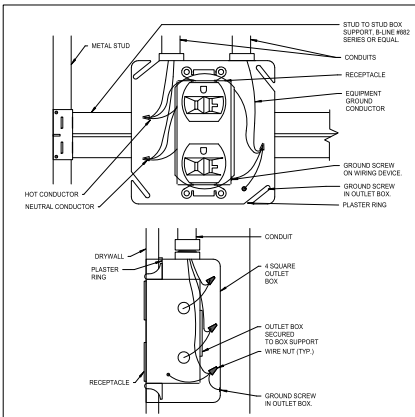
COPYRIGHT 2019 - KTH ARCHITECTS, INC.



- KEYED NOTES**
- 1 PROVIDE RELAY FOR CONNECTION OF FAN TO FIRE ALARM CONTROL PANEL.
 - 1 PROVIDE WALL MOUNTED LIGHTING CONTROLLER IN OFFICER'S ROOM WITH DRY CONTACT FOR CONNECTION TO FIRE FIGHTER ALERT SYSTEM. UPON RECEIVING SIGNAL FROM FIRE FIGHTER ALERT SYSTEM, CONTROLLER SHALL SHUT OFF LEVELS IN SLEEPING ROOMS PROXIMATE BASE OF CEILING JOINT BRANCS FREED POSITION FROM REFER TO CEILING FAN LAYOUT PLAN FOR BRANCHED CONNECTION DIAGRAMS. CONFIRM DEVICE LOCATION WITH OWNER PRIOR TO RUSHING.
 - 1 FAN SPEED CONTROL SWITCH MOUNT GARAGE OFFICE.

1 SECOND FLOOR - LIGHTING
1/4" = 1'-0"

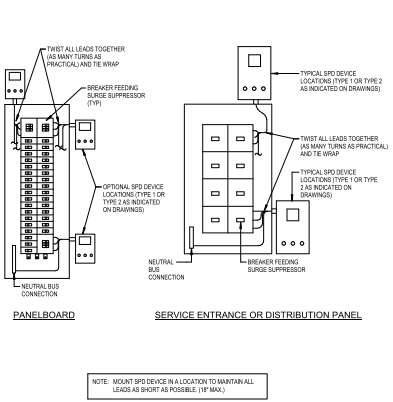
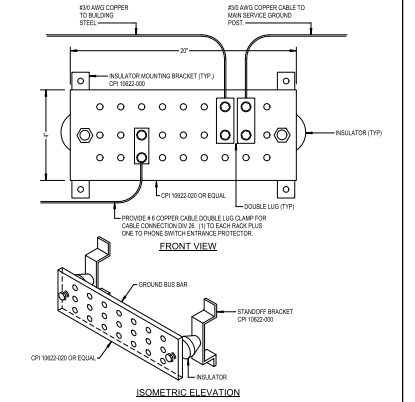
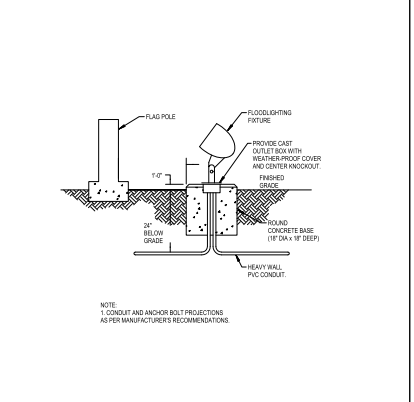
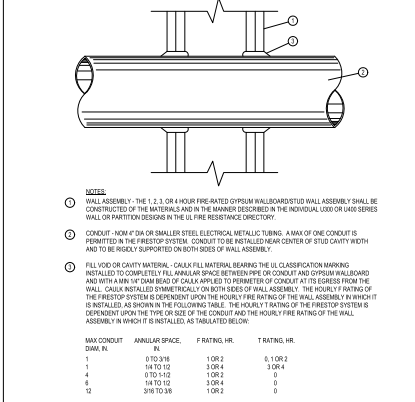
DATE	02/22/21
NO.	3
DESCRIPTION	PERMIT COMMENT RESPONSE #1
<p>STEPHEN B. COTTON, P.E. FL LIC# 10000</p> <p>John P. Adams, AIA Ethin J. Hine, AIA Jennifer Zaffuto, AIA, LEED, NCARB</p> <p>TLC ENGINEERING 1711 AVENUE TWIN • SUITE 101 • AUSTIN, TX 78704 • TEL: 512.377.1007 • FAX: 512.377.1008 100 NORTH HIGHLAND AVE • ORLANDO, FL • 407.203.8070 • FAX: 407.939.9899</p>	
<p>10/19/2022 12:34:22 PM</p>	
<p>100% CD Submittal - Bid Set</p>	
<p>LAKE COUNTY FIRE STATION NO. 71 ELECTRICAL LEVEL 2 LIGHTING PLAN</p>	
<p>NOVEMBER 10, 2021</p>	
<p>33601 CR. 433, LEEBURG, FL 34778</p>	
<p>E3.2</p>	



TYPICAL RECEPTACLE MOUNTING DETAIL
No Scale

PANELBOARD NAMEPLATE
No Scale

MOUNTING HEIGHTS
No Scale

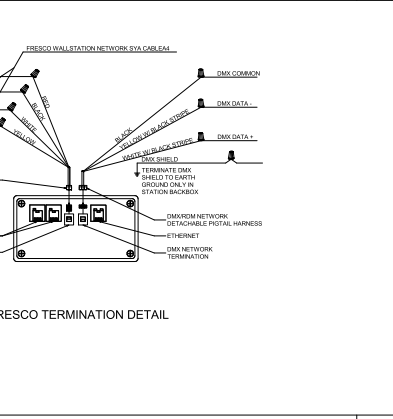
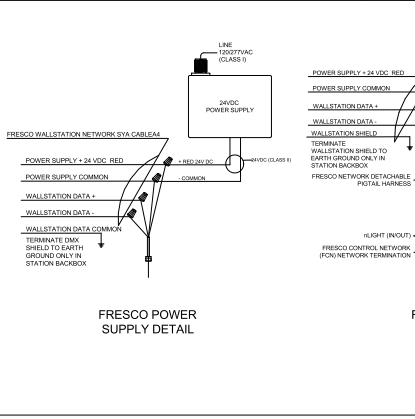
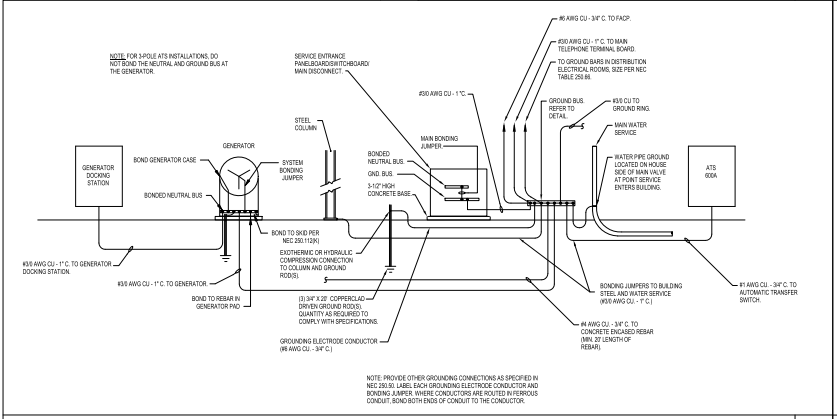


CONDUIT PENETRATION OF FIREWALL
UL SYSTEM NO. W-L-1001

FLAG POLE LIGHT FIXTURE MOUNTING
No Scale

GROUND BAR
No Scale

SPD EXTERIOR MOUNT INSTALLATION
No Scale



SYSTEM GROUNDING DETAIL
NO SCALE

SCENE CONTROLLER WIRING AND TERMINATION
No Scale

SCENE CONTROLLER WIRING AND TERMINATION
No Scale

DATE _____
SHEET _____

DESCRIPTION

NO. _____

PROJECT COMMENT RESPONSE

STEPHEN B. COTTON, P.E.
REGISTERED PROFESSIONAL ELECTRICAL ENGINEER

10/19/2022 12:34:25 PM

John P. Adams, AIA
LEED AP
Jerome Banker, AIA
LEED AP
Jennifer Zaffuto, AIA, LEED, NCARB
LEED AP
TIA/ATM/TELE/COM/SEC/IT/INFRA/ID/OT/AV/STATION/TRANSPORTATION/HAZARDOUS WASTE/ASBESTOS/ENVIRONMENTAL/ARCHITECTURE/INTERIORS/MECHANICAL/ELECTRICAL/PLUMBING/PAINTING/CONSTRUCTION/GENERAL CONTRACTOR

KTH ARCHITECTS

100% CD Submittal - Bid Set

LAKE COUNTY
FIRE STATION NO. 71
ELECTRICAL DETAILS

33601 CR. 473, LEEBURG, FL 34788

NOVEMBER 10, 2021

TLC ENGINEERING
3205 Canal Blvd., Suite 103
Melbourne, FL 32940
P: 321.983.0174
F: 321.983.0174
TLC No. 521.107
THINK. LISTEN. FORWARD.

E6.1

COPYRIGHT 2019 - KTH ARCHITECTS, INC.

