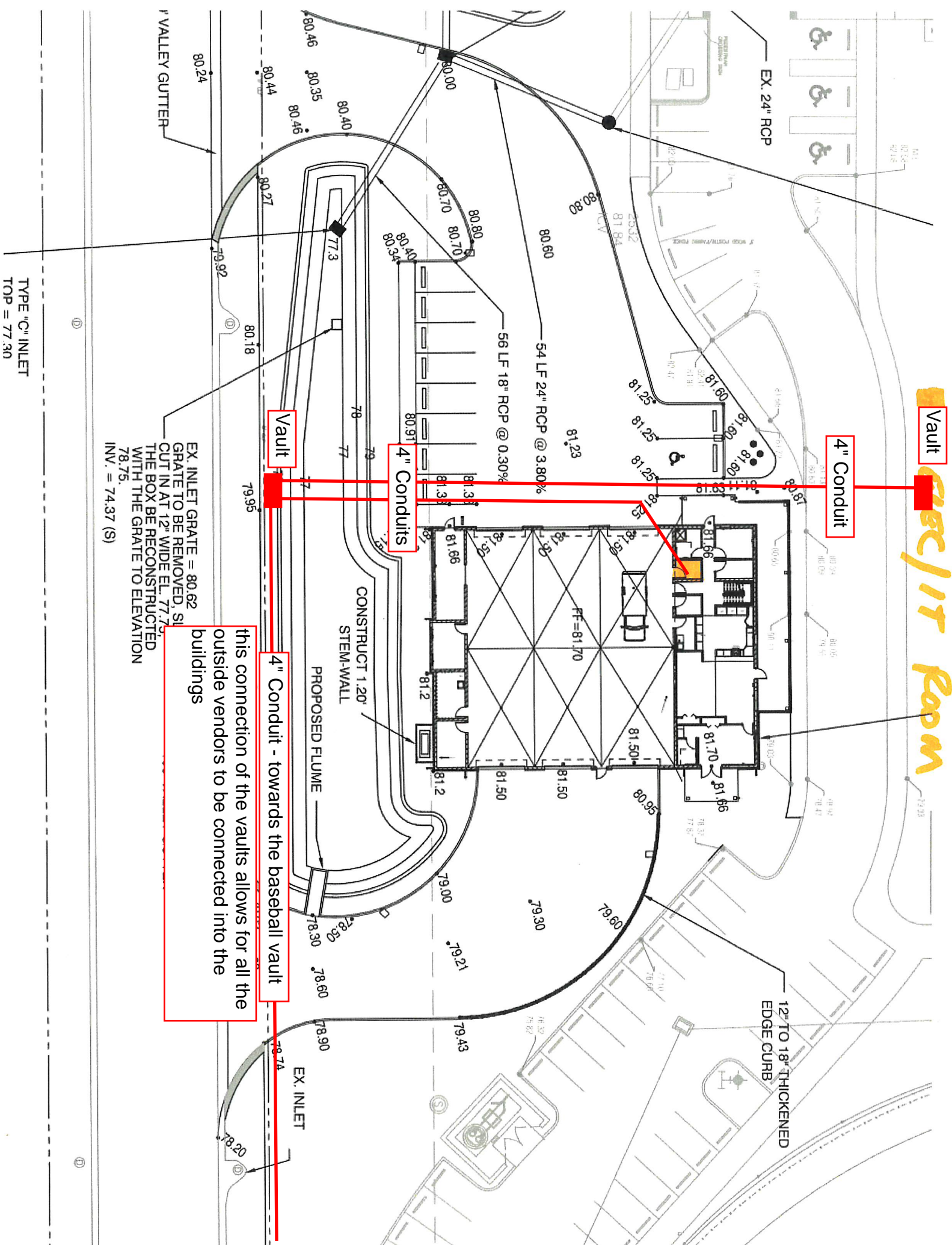


# Vault *Electric Room*



Vault

4" Conduit

4" Conduits

Vault

4" Conduit - towards the baseball vault

this connection of the vaults allows for all the outside vendors to be connected into the buildings

EX. INLET GRATE = 80.62  
 GRATE TO BE REMOVED, SI  
 CUT IN AT 12" WIDE EL. 77.75.  
 THE BOX BE RECONSTRUCTED  
 WITH THE GRATE TO ELEVATION  
 78.75.  
 INV. = 74.37 (S)

TYPE "C" INLET  
 TOP = 77.30

12" TO 18" THICKENED  
 EDGE CURB

FF=81.70

CONSTRUCT 1.20'  
 STEM-WALL

PROPOSED FLUME

EX. 24" RCP

54 LF 24" RCP @ 3.80%

56 LF 18" RCP @ 0.30%

1" VALLEY GUTTER