

010000 GENERAL NOTES

- STRUCTURAL DRAWINGS SHALL BE USED IN CONJUNCTION WITH PROJECT SPECIFICATIONS AND ARCHITECTURAL, MECHANICAL, ELECTRICAL, PLUMBING AND FIRE DRAWINGS. CONFORM TO THESE DRAWINGS FOR OPERATIONAL REQUIREMENTS, EQUIPMENT WEIGHTS AND LOCATIONS, EMBEDDED ITEMS AND OTHER DETAILS NOT SHOWN ON STRUCTURAL DRAWINGS.
- DIMENSIONS AND CONDITIONS MUST BE VERIFIED IN THE FIELD. ANY DISCREPANCIES SHALL BE BROUGHT TO THE ATTENTION OF THE ENGINEER OF RECORD BEFORE PROCEEDINGS WITH THE AFFECTED PART OF THE WORK.
- NO STRUCTURAL MEMBER OR COMPONENT SHALL BE CUT, NOTCHED, OR OTHERWISE ALTERED UNLESS APPROVED IN WRITING BY THE ENGINEER OF RECORD. THE CONTRACTOR SHALL BE RESPONSIBLE FOR ANY AND ALL COSTS INCURRED BY THE ENGINEER OF RECORD FOR REVIEW OF ANY SUCH DEVIATIONS.
- DO NOT SCALE DRAWINGS.
- DETAILS LABELED "TYPICAL DETAILS" ON THE DRAWINGS SHALL APPLY TO ALL SITUATIONS OCCURRING ON THE PROJECT THAT ARE THE SAME OR SIMILAR TO THOSE SPECIFICALLY DETAILED. THE APPLICABILITY OF THE DETAIL TO LOCATION ON THE DRAWINGS CAN BE DETERMINED BY THE TITLE OF DETAIL. SUCH DETAILS SHALL APPLY WHETHER OR NOT THEY ARE REFERENCED AT EACH LOCATION. SITUATIONS REGARDING APPLICABILITY OF TYPICAL DETAILS SHALL BE DETERMINED BY THE ENGINEER OF RECORD.
- THE GENERAL CONTRACTOR SHALL COMPARE THE ARCHITECTURAL AND STRUCTURAL DRAWINGS AND REPORT ANY DISCREPANCIES BETWEEN EACH SET OF DRAWINGS AND WITHIN EACH SET OF DRAWINGS TO THE ARCHITECT AND ENGINEER OF RECORD PRIOR TO THE FABRICATION AND INSTALLATION OF ANY STRUCTURAL MEMBERS.
- THE CONTRACT STRUCTURAL DRAWINGS AND SPECIFICATIONS REPRESENT THE FINISHED STRUCTURE. AND DO NOT INDICATE THE METHOD OR MEANS OF CONSTRUCTION THE CONTRACTOR SHALL SURVEY AND CHECK THE WORK AND SHALL BE SOLELY RESPONSIBLE FOR ALL CONSTRUCTION MEANS, METHODS, PROCEDURES, TECHNIQUES, SEQUENCES, OR PROCEDURES. THE CONTRACTOR DOES NOT HAVE CONTROL OR CHARGE OF, AND SHALL NOT BE RESPONSIBLE FOR, CONSTRUCTION MEANS, METHODS, TECHNIQUES, SEQUENCES, OR PROCEDURES FOR SAFETY, PRECAUTIONS AND PROGRAMS IN CONNECTION WITH THE WORK, FOR THE ACTS OR OMISSIONS OF THE CONTRACTOR, SUBCONTRACTOR OR ANY OTHER PERSONS PERFORMING ANY OF THE WORK, OR FOR THE FAILURE OF ANY OF THEM TO Carry OUT THE WORK IN ACCORDANCE WITH THE CONTRACT DOCUMENTS.
- THE STRUCTURAL ENGINEER'S OBLIGATIONS TO REVIEW SHOP DRAWINGS AND OTHER SUBMITTALS AND TO RETURN THEM IN A TIMELY MANNER ARE CONTINGENT UPON THE PRIOR REVIEW AND APPROVAL OF THE SHOP DRAWINGS OR SUBMITTALS BY THE CONTRACTOR AS REQUIRED IN THE CONSTRUCTION CONTRACT AND BY THE CONTRACTOR'S SUBMITTAL OF THE SHOP DRAWINGS AND OTHER SUBMITTALS IN ACCORDANCE WITH A WRITTEN SCHEDULE OBTAINED BY ADVISANCE TO THE ENGINEER IDENTIFYING THE DATES FOR THE SUBMITTAL OF THE VARIOUS SHOP DRAWINGS AND SUBMITTALS.
- PERIODIC SITE OBSERVATION BY FIELD REPRESENTATIVES OF TLC ENGINEERING SOLUTIONS, INC IS SOLELY FOR THE PURPOSE OF DETERMINING THE PROGRESS OF THE CONTRACTOR'S PROCEEDINGS IN GENERAL ACCORDANCE WITH THE STRUCTURAL CONTRACT DOCUMENTS. THIS LIMITED SITE OBSERVATION SHALL NOT BE CONSTRUED AS EXHAUSTIVE OR CONTINUOUS TO CHECK THE QUALITY OR QUANTITY OF THE WORK.
- STRUCTURAL ENGINEER OF RECORD IS NOT RESPONSIBLE FOR THE DESIGN OF COLD-FORMED STEEL FRAMING OR OTHER ITEMS NOT SHOWN IN THE STRUCTURAL CONTRACT DOCUMENTS. SUCH SYSTEMS SHALL BE DESIGNED, FURNISHED, AND INSTALLED AS REQUIRED BY OTHER PORTIONS OF THE CONTRACT DOCUMENTS.
- IN THE PROFESSIONAL OPINION OF TLC ENGINEERING SOLUTIONS, INC., THE STRUCTURAL CONTRACT DOCUMENTS FOR THIS PROJECT HAVE BEEN PREPARED IN ACCORDANCE WITH THE DESIGN CRITERIA AS SET FORTH IN THE FLORIDA BUILDING CODE (FBC) 7th EDITION (2020).
- THE USE OF REPRODUCTIONS OF THESE CONTRACT DOCUMENTS AND USE OF CAD FILES BY ANY CONTRACTOR, SUBCONTRACTOR, ERECTOR, FABRICATOR OR MATERIAL SUPPLIER IN LIEU OF PREPARATION OF SHOP DRAWINGS JOINTLY HAS ACCEPTANCE OF ALL INFORMATION SHOWN HEREON AS CORRECT, AND QUALIFIES HIMSELF TO ANY JOB EXPENSE, RISK, OR LIABILITY, ARISING DUE TO ANY ERRORS THAT MAY OCCUR HEREON.

010002 DESIGN LOADS

- THE STRUCTURAL SYSTEM FOR THIS BUILDING HAS BEEN DESIGNED IN ACCORDANCE WITH THE FLORIDA BUILDING CODE, 7th EDITION (2020), AND AS SUPPLEMENTED BY LOCAL AMENDMENTS.
- THE FOLLOWING SUPERIMPOSED LOADINGS HAVE BEEN UTILIZED:
 - A. DEAD LOADS:**
 - ROOF STRUCTURE 15 PSF
 - CEILING 10 PSF
 - B. LIVE LOADS:**
 - ROOF 20 PSF
 - WIND LOADS: PER FLORIDA BUILDING CODE, SECTION 1609
 - ULTIMATE DESIGN WIND SPEED, V_{ult} 140 MPH (I) SEC. (QUIET)
 - NOMINAL DESIGN WIND SPEED, V_{dref} 109 MPH (I) SEC. (QUIET)
 - RISK CATEGORY III
 - EXPOSURE B
 - COMPONENT AND CLADDING IN THE AREA OF CONSTRUCTION SHALL BE DESIGNED FOR NOMINAL WIND PRESSURES OF +5.7/-30.1 PSF.

013100 REQUEST FOR INTERPRETATION

- RFI SHALL ORIGINATE WITH CONTRACTOR AND SHALL BE SUBMITTED IN THE FORM SPECIFIED WITHIN CONTRACT DOCUMENTS. RFI SHALL BE SUBMITTED BY A PROMPT MANNER AS TO AVOID DELAYS IN CONTRACTORS WORK.
- RFI SHALL BE SUBMITTED AS SPECIFIED WITHIN THE CONTRACT DOCUMENTS AND SHALL BE FORWARDED TO THE ENGINEER OR THE ARCHITECT OR DIRECTLY TO THE ENGINEER BY THE CONTRACTOR WHEN APPROVED BY THE ARCHITECT.
- ENGINEER SHALL TAKE UP TO 5 BUSINESS DAYS TO REVIEW AND RETURN RFI'S. HOWEVER, THE ENGINEER WILL ATTEMPT TO EXPEDITE THE REVIEW OF ALL RFI'S WITHIN A REASONABLE TIME FRAME.
- RFI RESPONSES ARE NOT INTENDED TO AUTHORIZE ANY INCREASE IN CONSTRUCTION COST, SCHEDULE OR TIME EXTENSION, OR CONSTRUCTION DIFFICULTY. THE CONTRACTOR SHALL NOTIFIED THE DESIGN TEAM IMMEDIATELY OF ANY PERCEIVED SCOPE, SCHEDULE, OR COST IMPACTS OR ADJUSTMENTS. IF CONTRACTOR REQUESTS ANY ADDITIONAL COST INCREASE IN SCHEDULE OR ADJUSTMENT IN SCOPE, THE CONTRACTOR SHALL NOT PROCEED WITH ADDITIONAL WORK UNTIL APPROVED IN WRITING BY THE CONSTRUCTION ADMINISTRATOR.

013301 SHOP DRAWING REVIEW

- SHOP DRAWINGS SHALL ADEQUATELY DEPICT THE STRUCTURAL ELEMENTS AND CONNECTIONS SHOWN ON THE CONTRACT DOCUMENTS. SHOP DRAWINGS WILL BE REVIEWED FOR GENERAL COMPLIANCE WITH THE DESIGN INTENT OF THE CONTRACT DOCUMENTS ONLY. IT SHALL BE THE RESPONSIBILITY OF THE CONTRACTOR TO VERIFY COMPLIANCE WITH THE CONTRACT DOCUMENTS AS TO QUANTITY, LENGTH, ELEVATIONS, DIMENSIONS, ETC. REVIEW OF SUBMITTALS AND SHOP DRAWINGS DOES NOT RELIEVE THE CONTRACTOR OF FULL RESPONSIBILITY FOR ERRORS AND OMISSIONS ASSOCIATED WITH THE PREPARATION OF THE SHOP DRAWINGS.
- SHOP DRAWINGS SHALL BE REVIEWED BY THE CONTRACTOR AND MARKED "APPROVED" PRIOR TO SUBMITTAL TO THE ARCHITECT/ENGINEER. NON-CONFORMING DRAWINGS/SUBMITTALS WILL BE RETURNED WITHOUT REVIEW.
- THE CONTRACT DOCUMENTS WILL GOVERN OVER THE SHOP DRAWINGS UNLESS OTHERWISE SPECIFIED IN WRITING BY THE ENGINEER OF RECORD.
- CHANGES AND ADDITIONS MADE ON RE-SUBMITTALS SHALL BE CLEARLY FLAGGED AND NOTED. THE PURPOSE OF THE RE-SUBMITTALS SHALL BE CLEARLY NOTED ON THE LETTER OF TRANSMITTAL ARCHITECT/ENGINEER OF RECORD IS NOTED ON TO THOSE ITEMS CAUSING THE RE-SUBMITTAL. CONTRACTOR IS RESPONSIBLE FOR COSTS CAUSED BY MULTIPLE RE-SUBMITTALS MORE THAN ONE AT ARCHITECT/ENGINEER'S CURRENT HOURLY RATES.

013303 SUBMITTALS

- ALL SHOP DRAWINGS MUST BE REVIEWED AND STAMPED APPROVED BY THE GENERAL CONTRACTOR PRIOR TO SUBMITTAL.
- THE GENERAL CONTRACTOR SHALL SUBMIT FOR ENGINEER REVIEW SHOP DRAWINGS FOR THE FOLLOWING ITEMS:
 - ITEMS MARKED (D) SHALL HAVE SHOP DRAWINGS SEALED BY A PROFESSIONAL ENGINEER REGISTERED IN THE STATE OF FLORIDA.
 - ITEMS MARKED (H) SHALL BE SUBMITTED FOR ENGINEERS RECORD ONLY.
- MANUFACTURER'S LITERATURE. SUBMIT TWO COPIES OF MANUFACTURER'S LITERATURE FOR ALL MATERIALS AND PRODUCTS USED IN CONSTRUCTION ON THE PROJECT.
 - A. METAL ROOF OR FORM DECK

024117 EXISTING STRUCTURE

- INFORMATION SHOWN FOR THE EXISTING STRUCTURE ON THESE DRAWINGS WAS TAKEN FROM THE DRAWINGS THAT WERE PREPARED FOR:
 - PREPARED BY GUMANN, DRAGASH, AND MATZ ARCHITECTS, INC.
 - ENTITLED LAKE COUNTY COURTHOUSE
 - DATED APRIL 23, 1975
- WORK SHOWN ON THESE DRAWINGS ASSUMES THAT THE ORIGINAL CONSTRUCTION HAS PERFORMED IN ACCORDANCE WITH THE AS-BUILT ORIGINAL DRAWINGS INCLUDING BUT NOT LIMITED TO DIMENSIONS, ELEVATIONS, MEMBER SIZES, MATERIALS, DETAILS, ETC. IT SHALL BE THE RESPONSIBILITY OF THE CONTRACTOR TO VERIFY THE CONDITIONS RELATING TO THE EXISTING STRUCTURE, AND TO NOTIFY THE ENGINEER IMMEDIATELY OF ANY DISCREPANCIES OR CONFLICTS.

051200 STRUCTURAL STEEL

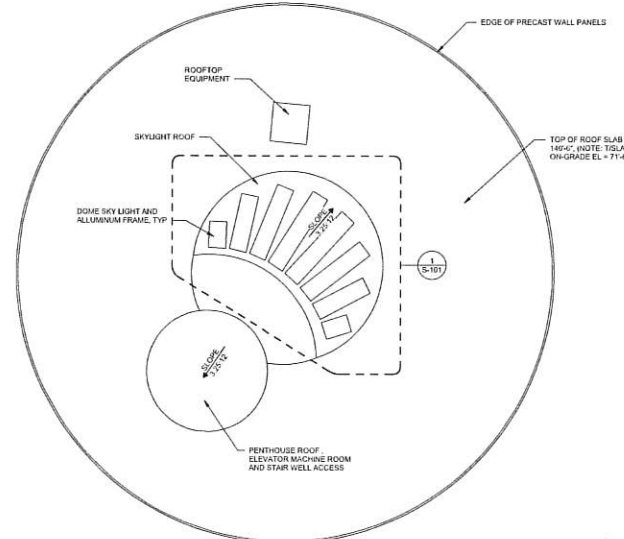
- STEEL WORK SHALL BE NEW AND CONFORM TO THE ANSI/AISC 360-16 SPECIFICATION FOR STRUCTURAL STEEL BUILDINGS.
- MATERIAL SHALL CONFORM TO THE FOLLOWING, EXCEPT AS NOTED:
 - ANGLES, CHANNELS AND PLATES ASTM A36 (F_y 36 ksi)
- ALL STRUCTURAL STEEL EXPOSED TO EXTERIOR CONDITIONS SHALL BE HOT DIPPED GALVANIZED PER ASTM A153 AND ALL FASTENERS AND HARDWARE SHALL BE HOT DIPPED GALVANIZED PER ASTM A153.
- APPLY FIREPROOFING TO STEEL STRUCTURE CALCULATING THE THICKNESS OF FIREPROOFING BY COMPARING THE ACTUAL MEMBER SIZE TO THE MEMBER SIZE USED IN THE DESIGNATED UL RATING AND ADJUSTING APPROPRIATELY.

051201 WELDING

- WELDING SHALL BE DONE BY WELDERS WITH CURRENT CERTIFICATION IN ACCORDANCE WITH AWS D1.1.
- WELDS SHOWN ON STRUCTURAL DRAWINGS ARE MINIMUM DESIGN REQUIREMENTS. THE FABRICATOR'S SHOP DRAWINGS SHALL REFLECT WELDS IN ACCORDANCE WITH AWS REQUIREMENTS.
- FULL PENETRATION GROOVE WELDS SHALL BE INSPECTED BY ULTRASONIC TESTING. TWENTY-FIVE PERCENT OF THE WELDS SHALL BE INSPECTED AT RANDOM UNLESS NOTED OTHERWISE. SEE SPECIFICATIONS FOR ADDITIONAL REQUIREMENTS.
- UNLESS NOTED OTHERWISE ON THE DRAWINGS, GROOVE WELDS SHALL BE FULL PENETRATION.
- PROVIDE FILLET WELDS AT CONTACT POINTS BETWEEN STEEL MEMBERS SUFFICIENT TO DEVELOP THE ALLOWABLE TENSILE STRENGTH OF THE SMALLER MEMBER AT THE JOINT UNLESS DETAILED OTHERWISE ON THE DRAWINGS. THE MINIMUM FILLET WELD SIZE IS 3/16" UNLESS OTHERWISE NOTED.

051302 STEEL ROOF DECK

- SHALL BE GALVANIZED ORG. TYPE "B" STEEL ROOF DECK OF GAGE AND DEPTH INDICATED ON DRAWINGS. AND SHALL CONFORM TO THE PROVISIONS OF THE STEEL DECK INSTITUTE (SDI) SPECIFICATIONS FOR STEEL ROOF DECK.
- DECK SHALL BE VENTED IN AREAS TO RECEIVE LIGHT WEIGHT INSULATING CONCRETE FILL, PER FBC SECTION 1917.1.1. COORDINATE VENTING AREA REQUIREMENT WITH INSULATING FILL MANUFACTURER.
- DECK CENTERINGS SHALL BE PLACED IN CONFORMANCE WITH MANUFACTURER'S RECOMMENDATIONS.
- WELD PATTERN AT MAIN DECK SUPPORTS, AND SIDE/END CONNECTIONS, SHALL BE AS INDICATED ON ROOF DECK FASTENING DIAGRAM. PROVIDE 5/8" PUDDLE WELDS AT 12" O.C. ALONG EDGE SUPPORTS, UNLESS NOTED OTHERWISE.
- DECK SHALL BE TOPPED WITH TYPE B INSULATING FILL CONSISTING OF RIGID INSULATING BOARD COVERED WITH TWO OR MORE INCHES OF LIGHT WEIGHT INSULATING CONCRETE OVER THE TOP. MAX. JOIST DEPTH DEPENDENT.
- METAL DECK MANUFACTURER SHALL BE A MEMBER OF THE STEEL DECK INSTITUTE AND ALL DESIGN SHALL BE IN ACCORDANCE WITH APPLICABLE STANDARDS.
- DO NOT MANG MEP SYSTEMS (DUCTWORK, ROOF DRAIN OR FIRE PROTECTION PIPING, ETC.) FROM ROOF DECK. ALL EQUIPMENT IS TO BE RIGID FROM ROOF JOISTS. SEE SECTION 5210 FOR ROOF JOIST REQUIREMENTS.



① OVERALL BUILDING PLAN
1/16" = 1'-0"



② PHOTOGRAPH OF EXISTING SKYLIGHTS LOOKING NE
1/8" = 1'-0"

TLC ENGINEERING SOLUTIONS
 7370 Cabot Court, Suite 103
 Melbourne, FL 32940
 P 321.636.0274
 www.tlc-engineers.com
 COA 15

© Copyright 2022 TLC Engineering Solutions, Inc.
 TLC Project No.: 522209
 THINK. LISTEN. CREATE.

Lake County Administration
 Building Skylights
 315 West Main St., Tavares, FL 32778

Consultants:

Revisions	No.	Date	Description

100% REVIEW SET
 NOT FOR CONSTRUCTION
 ONLY C. KRUEGER LICENSED
 PROFESSIONAL ENGINEER
 12114
 12114

Project No.: 522009
 Issue Date: 01/28/2022
 Drawn By: MTO
 Approved By: DCV
 Scale: As Indicated
 Drawing Title:
STRUCTURAL GENERAL NOTES

Drawing No.: **S-002**

1/28/2022 2:34:39 AM
 C:\Users\2021\luc814220201-Lake County\BldgMgt_Skylights_0218_2022_DwgSet\BldgMgt

Consultants:

Revisions:

No.	Date	Description

Scale:



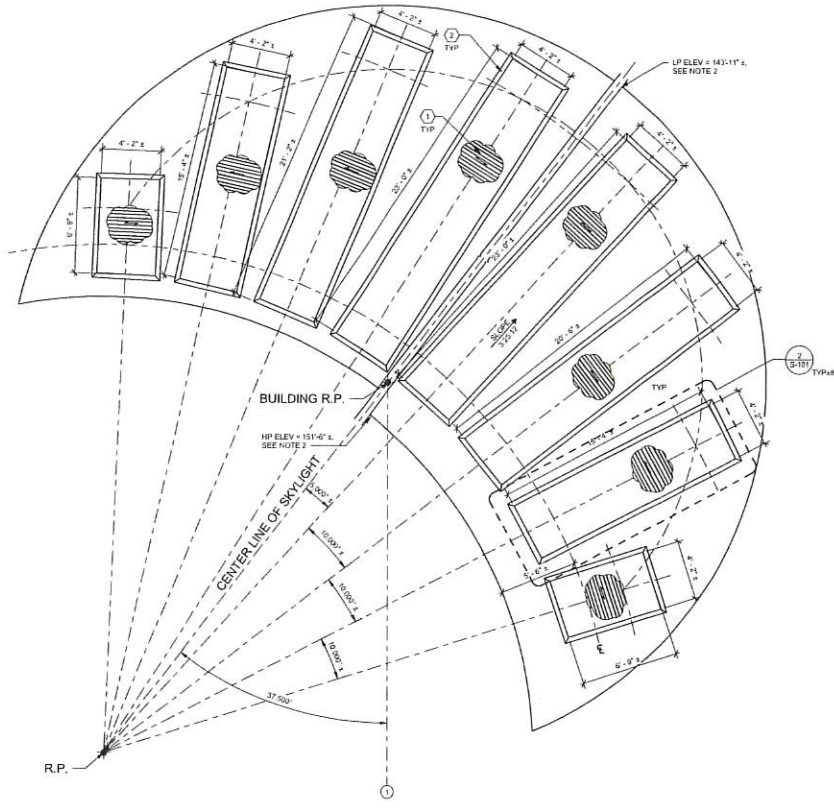
Project No.: 522009
Issue Date: 01/28/2022
Drawn By: MTO
Approved By: DCV
Scale: As Indicated
Drawing Title: ROOF FRAMING PLAN

Drawing No.:

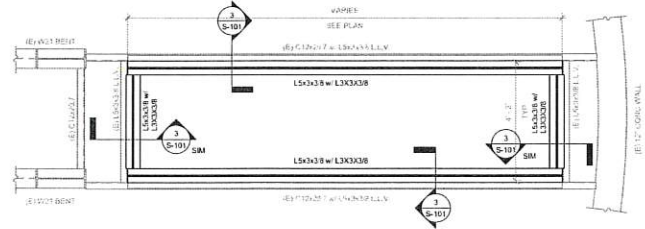
S-101

- GENERAL NOTES**
- REFER TO SHEET S-001 FOR STRUCTURAL SYMBOLS AND ABBREVIATIONS.
 - REFER TO SHEET S-001 FOR STRUCTURAL GENERAL NOTES.
 - ELEVATIONS SHOWN ON THE SHEET ARE TAKEN FROM THE EXISTING DRAWINGS THAT ARE REFERENCED IN THE STRUCTURAL GENERAL NOTES. THE GROUND FFE = ± 71.9'.
 - CONTRACTOR SHALL FIELD VERIFY ALL DIMENSIONS SHOWN ON THESE DRAWINGS AND NOTIFY STRUCTURAL ENGINEER OF ANY DISCREPANCIES.

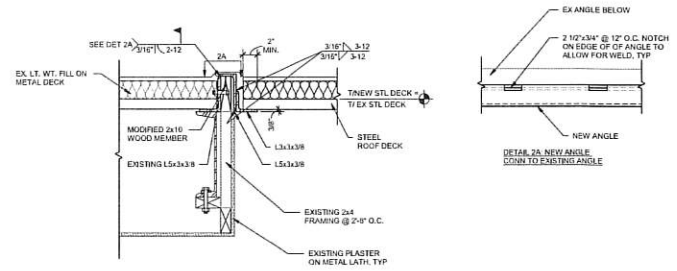
- KEYNOTE LEGEND**
- 1.5" 22 GAUGE TYPE '91' STEEL ROOF DECK, SEE DETAIL 4 / S-101.
 - EXISTING OPENING EDGE AFTER DEMOLITION OF ARCHITECTURAL FRAMING COMPONENTS, SEE SHEET S0-101.



1 ROOF OPENING FRAMING PLAN
1/4" = 1'-0"



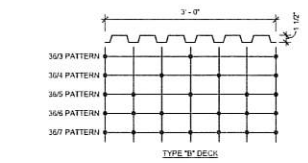
2 ENLARGED OPENING VIEW
1/2" = 1'-0"



3 INFILL SECTION @ OPENING
1 1/2" = 1'-0"

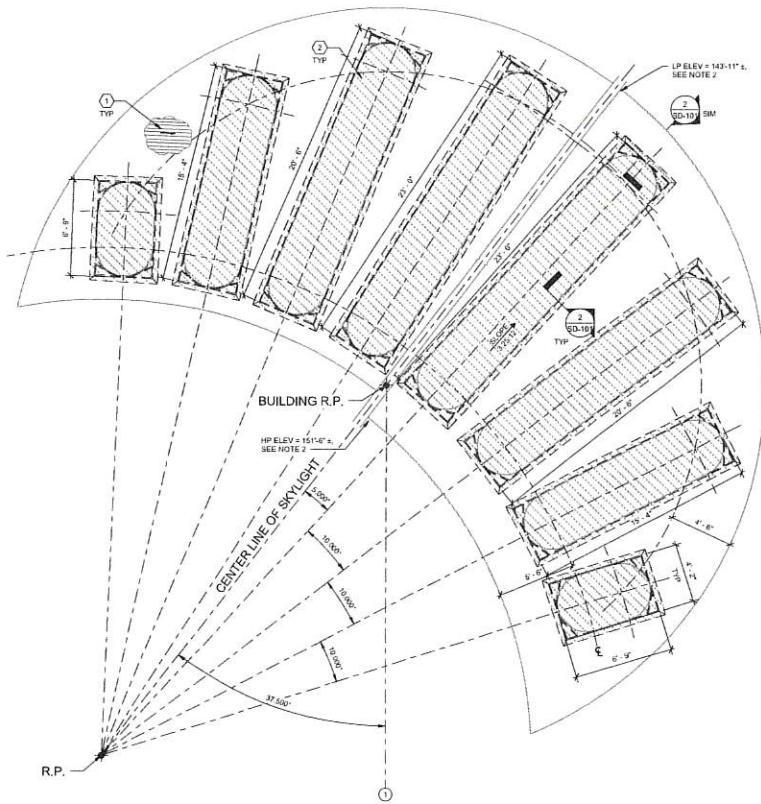
ROOF DECK FASTENING PATTERN

BUILDING	ZONE	ROOF DECK MINIMUM FASTENING PATTERN
SKYLIGHT INFILL	1	3/4" 5/8" PUDDLE WELDS WITH (3) #10 TEK SCREW SIDELAPS



4 ROOF DECK FASTENING SCHEDULE & PATTERN
1" = 1'-0"

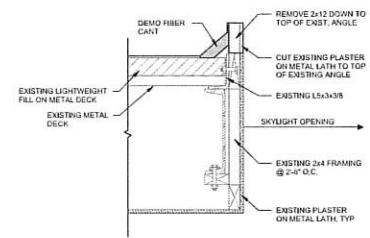
1/26/2022 2:24:31 AM C:\inetpub\wwwroot\221009 - Lake County Skylights_3115_1211_David Vitek.rvt



1 ROOF OPENING DEMO PLAN
1/4" = 1'-0"

- GENERAL NOTES**
- REFER TO SHEET S-001 FOR STRUCTURAL SYMBOLS AND ABBREVIATIONS.
 - REFER TO SHEET S-001 FOR STRUCTURAL GENERAL NOTES.
 - ELEVATIONS SHOWN ON THE SHEET ARE TAKEN FROM THE EXISTING DRAWINGS THAT ARE REFERENCED IN THE STRUCTURAL GENERAL NOTES. THE GROUND FFE = + 71.5'.
 - CONTRACTOR SHALL FIELD VERIFY ALL DIMENSIONS SHOWN ON THESE DRAWINGS AND NOTIFY STRUCTURAL ENGINEER OF ANY DISCREPANCIES.

- KEYNOTE LEGEND** (P)
- EXISTING METAL DECK.
 - EXISTING SKYLIGHT OPENING.



2 DEMOLITION SECTION AT SKYLIGHT
1 1/2" = 1'-0"



7370 Cabot Court, Suite 103
Melbourne, FL 32940
P 321.636.0274
www.tlc-engineers.com

COA 15
© Copyright 2021 TLC Engineering Solutions, Inc.
TLC Project No. 522009
THINK. LISTEN. CREATE.

Lake County Administration
 Building Skylights
 3115 West Main St., Tavares, FL 32778

Consultants:

Revisions:

No.	Date	Description

Scale



GARY C. KRELIGER, P.E.
Florida License #40788

Project No.: 522009

Issue Date: 01/28/2022

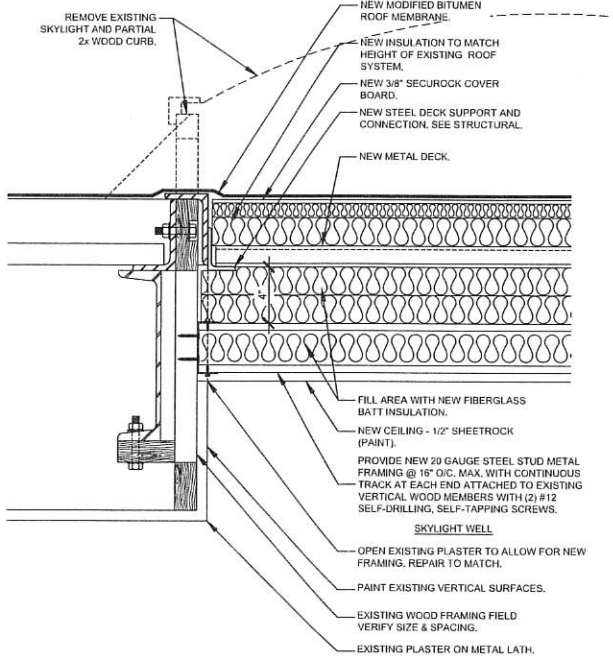
Drawn By: MTO

Approved By: DCV

Scale: As Indicated

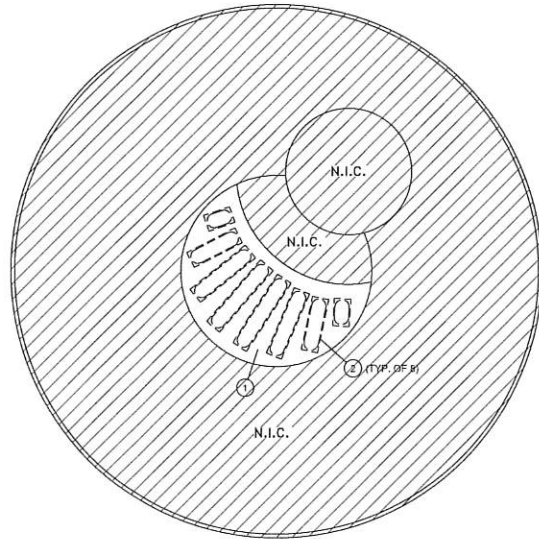
Drawing Title: DEMO ROOF FRAMING PLAN

Drawing No.: SD-101

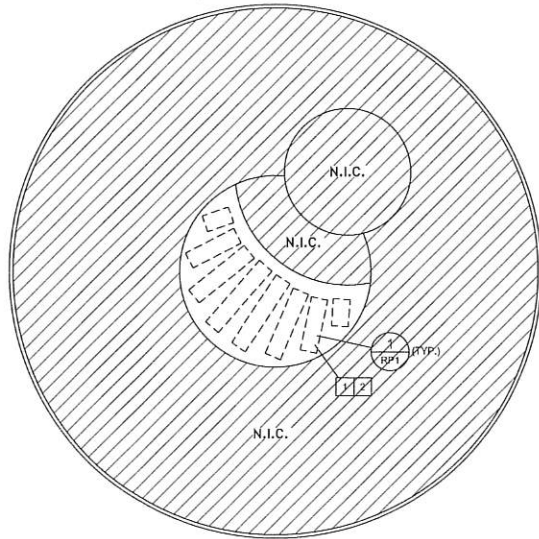


PAINT SYSTEM FOR PLASTER AND DRYWALL
 PRIMER: LX02W0050 - LXN C&M PRIMER.
 2 COATS: B20W12651 - PROMAR 200 ZERO VOC INTERIOR LATEX EG-SHEL.
 PAINT COLOR: SKY BLUE - FINAL SELECTION COLOR BY OWNER.

1 SKYLIGHT REMOVAL AND CURB OPENING INFILL DETAIL
 RP1 Scale: N.T.S.



EXISTING & DEMOLITION ROOF PLAN
 Scale: N.T.S.



NEW CONSTRUCTION ROOF PLAN
 Scale: N.T.S.

GENERAL NOTES:

1. ALL PLANS ARE NOT TO SCALE UNLESS OTHERWISE NOTED.
2. DIMENSIONS SHOWN ARE APPROXIMATE. CONTRACTOR SHALL FIELD VERIFY ALL DIMENSIONS BEFORE WORK.
3. PENETRATION AND ROOF TOP EQUIPMENT LOCATIONS ARE APPROXIMATE.
4. DEMOLITION KEYNOTES ON ROOF PLANS REFER TO LIMITED TYPICAL DETAILS AND ARE NOT INTENDED TO ENUMERATE ALL DETAILS OF EACH TYPE.

DEMOLITION PLAN KEY NOTES:

- 1 THE EXISTING ROOF SYSTEM IS TO REMAIN.
- 2 REMOVE ALL EXISTING SKYLIGHTS, EXISTING CURB IS TO REMAIN.

NEW CONSTRUCTION PLAN KEY NOTES:

- 1 PROVIDE NEW MODIFIED BITUMEN ROOF MEMBRANE SHEET. MINIMUM 2 PLY TORCH APPLIED MODIFIED ASPHALT ROOFING SYSTEM WITH A GRANULAR SURFACED CAP SHEET.
- 2 STAGGER END LAPS AT EXISTING ROOF SO THAT THE NEW CAP SHEET EXTENDS BEYOND THE NEW BASE SHEET.

LEGEND:

N.I.C. NOT INCLUDED

TLC ENGINEERING SOLUTIONS
 7370 Cabot Court, Suite 103
 Melbourne, FL 32940
 P 321.636.0274
 www.tlc-engineers.com
 COA 15
 © Copyright 2021 TLC Engineering Solutions, Inc.
 TLC Project No. _____
 THINK. LISTEN. CREATE.

Consultants:
PBA Design Group
 2742 Jason Street
 Tampa, FL 33619
 P 813.626.2540
 www.pbadesigngroup.com

Revisions:

No.	Date	Description

Seal

100% REVIEW SET NOT FOR CONSTRUCTION

Project No. 520009
 Issue Date 01.25.2022
 Drawn By SF
 Approved By HHP
 Scale: AS NOTED
 Drawing Title: Plan and Details

Drawing No. RP1