

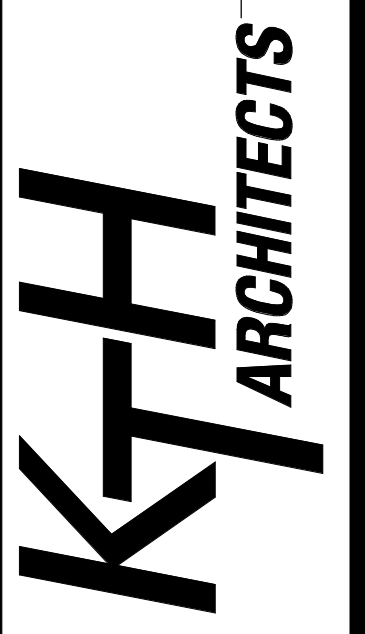
1 ELECTRICAL SITE PLAN  
1" = 20'-0"

- KEYED NOTES:**
- CONTROLLED VIA PHOTOCELL WITH ASTRONOMICAL TIME CLOCK OVERRIDE.
  - REFER TO DETAIL 1EE2 FOR POLE BASE DETAIL.
  - REFER TO DETAIL 2EE2 FOR POLE BASE DETAIL.
  - (3) 4" C TO NEW PAD MOUNTED UTILITY TRANSFORMER. ELECTRICAL CONTRACTOR SHALL COORDINATE EXACT LOCATION OF TRANSFORMER WITH SEC0 ENERGY BASED ON SERVICE REQUIREMENTS.
  - (1) 1" C FROM TRANSFER SWITCH IN ELECTRICAL ROOM TO GENERATOR FOR CONTROL WIRING.
  - PROPOSED LOCATION OF PAD MOUNTED UTILITY TRANSFORMER. ELECTRICAL CONTRACTOR SHALL COORDINATE EXACT LOCATION OF TRANSFORMER WITH SEC0 ENERGY. CONTRACTOR SHALL PROVIDE PAD BASED ON SERVICE REQUIREMENTS.
  - UNDERGROUND PRIMARY ELECTRICAL SERVICE CONDUITS. ELECTRICAL CONTRACTOR SHALL COORDINATE EXACT LOCATION AND ROUTING OF ELECTRICAL SERVICE PRIMARY CONDUIT AND FEEDERS WITH SEC0 ENERGY. CONTRACTOR SHALL PROVIDE PRIMARY CONDUITS AND FEEDERS AS REQUIRED BY SERVICE REQUIREMENTS.
  - PROPOSED LOCATION OF GENERATOR DOCKING STATION.
  - PROPOSED LOCATION OF ELECTRIC UTILITY METER.

NO.	DESCRIPTION	DATE

STEPHEN B. COTTON, P.E.  
PE License #60046  
5/3/2022 11:12:15 AM

John P. Adams, AIA  
Jerome Bankovich, Jr., AIA, LEED  
Ethan J. Hine, AIA  
Jennifer Zaffuto, AIA, LEED, NCARB  
1741 KOWANIS TRAIL • DUBOIS, PA • 814.371.1941 • F 814.371.8801 • KTHarch.com  
880 NORTH HIGHLAND AVE. • ORLANDO, FL • 407.203.6707 • F 407.493.0650



20073A

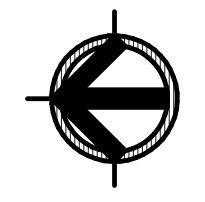
LAKE COUNTY  
FIRE STATION NO. 71  
ELECTRICAL SITE PLAN

NOVEMBER 10, 2021

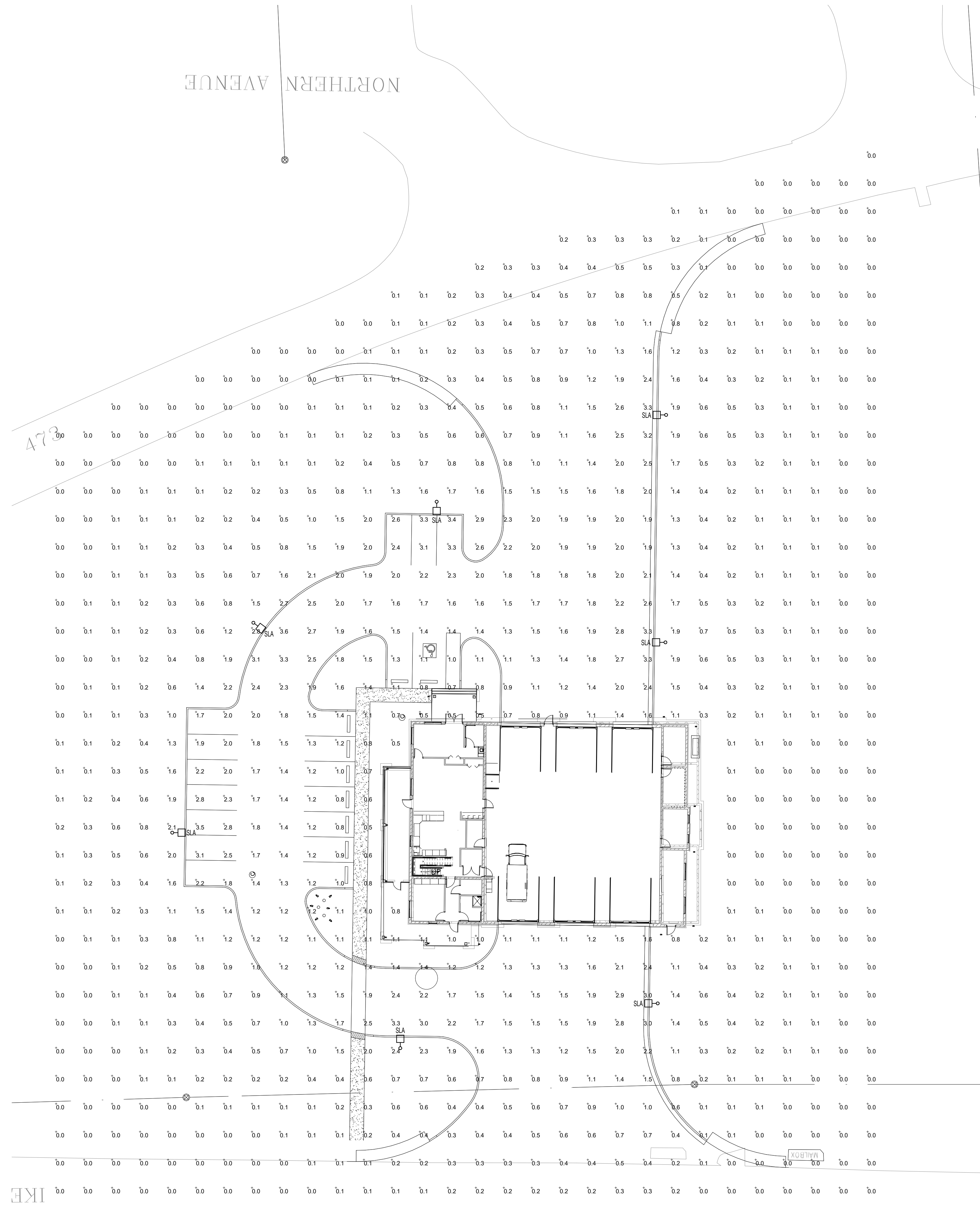
33661 CR 473, LEESBURG, FL 34788

E0.3

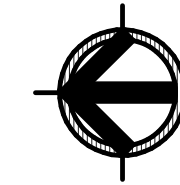
100% CD Submittal - Bid Set



**TLC ENGINEERING**  
SOLUTIONS  
7370 Cabot Court, Suite 103  
Melbourne, FL 32940  
P 321.636.0274  
COA 15  
www.tlc-engineers.com  
TLC No.: 521157  
©Copyright 2021  
THINK. LISTEN. CREATE.



1 PHOTOMETRIC SITE PLAN  
1" = 20'-0"



**TLC ENGINEERING**  
CONSULTING  
7370 Cabot Court, Suite 103  
Melbourne, FL 32940  
P 321.636.0274  
COA 15  
www.tlc-engineers.com  
TLC No.: 521157  
THINK. LISTEN. CREATE.

100% CD Submittal - Bid Set

**LAKE COUNTY**  
FIRE STATION NO. 71  
ELECTRICAL SITE PHOTOMETRICS

NOVEMBER 10, 2021

**E0.4**

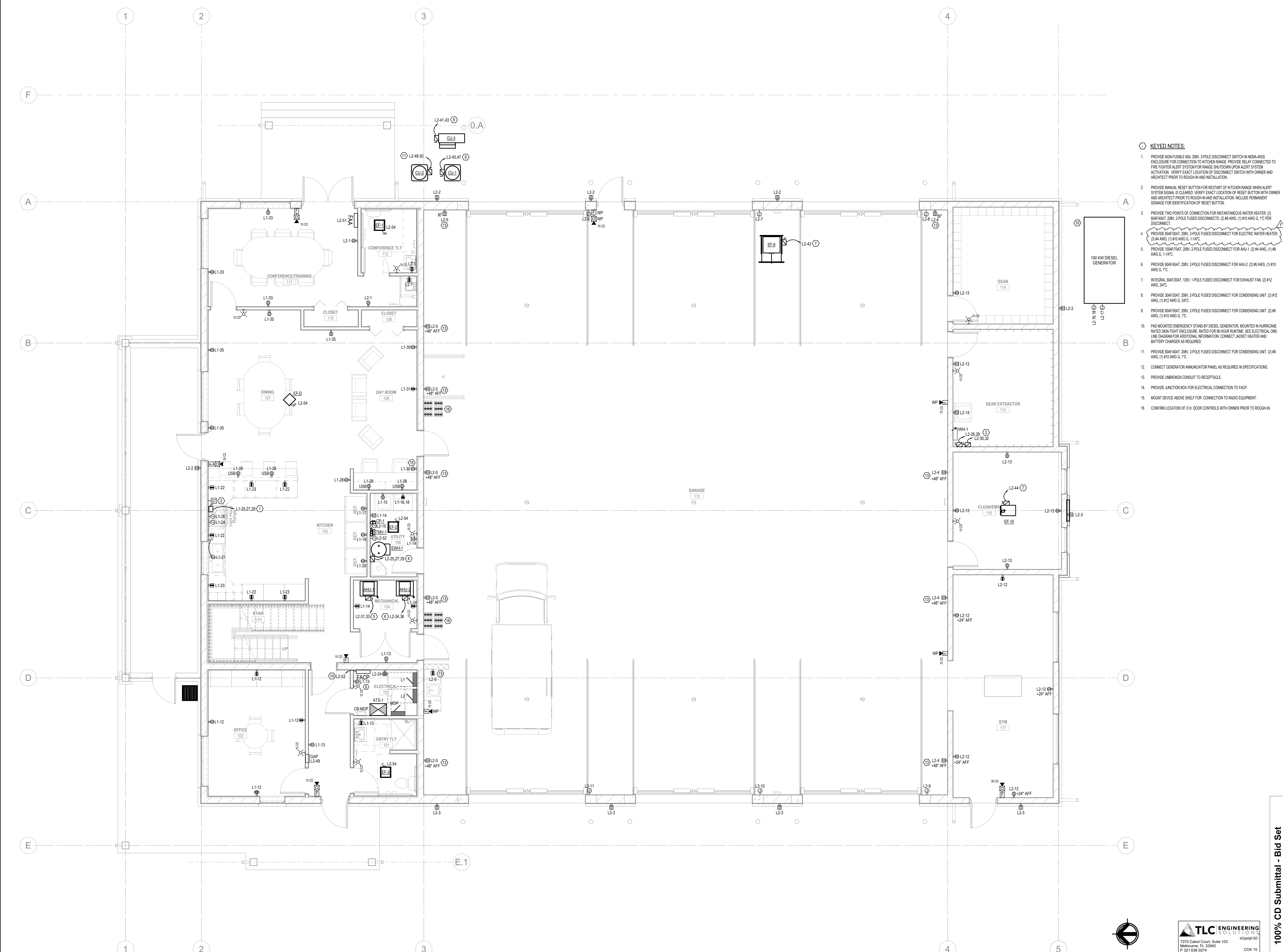
**KTH**  
ARCHITECTS

John P. Adams, AIA  
Jerome Bankovich, Jr., AIA, LEED  
Ethan J. Hine, AIA  
Jennifer Zaffuto, AIA, LEED, NCARB

1741 KOWANIS TRAIL • DUBOIS PA • 814.371.8801 • F 814.371.8801 • KTHarch.com  
880 NORTH HIGHLAND AVE. • ORLANDO, FL • 407.203.6707 • F 407.493.0550

STEPHEN B. COTTON, P.E.  
PE License #60046  
5/3/2022 11:12:17 AM

NO.	DESCRIPTION	DATE



- KEYED NOTES:**
1. PROVIDE NON-FUSIBLE 60A, 208V, 3-POLE DISCONNECT SWITCH IN NEMA-4XSS ENCLOSURE FOR CONNECTION TO KITCHEN RANGE. PROVIDE RELAY CONNECTED TO FIRE FIGHTER ALERT SYSTEM FOR RANGE SHUTDOWN UPON ALERT SYSTEM ACTIVATION. VERIFY EXACT LOCATION OF DISCONNECT SWITCH WITH OWNER AND ARCHITECT PRIOR TO ROUGH-IN AND INSTALLATION.
  2. PROVIDE MANUAL RESET BUTTON FOR RESTART OF KITCHEN RANGE WHEN ALERT SYSTEM SIGNAL IS CLEARED. VERIFY EXACT LOCATION OF RESET BUTTON WITH OWNER AND ARCHITECT PRIOR TO ROUGH-IN AND INSTALLATION. INCLUDE PERMANENT SIGNAGE FOR IDENTIFICATION OF RESET BUTTON.
  3. PROVIDE TWO POINTS OF CONNECTION FOR INSTANTANEOUS WATER HEATER. (1) 60A/40AT, 208V, 2-POLE FUSED DISCONNECTS. (2) #8 AWG, (1) #10 AWG G. 1°C PER DISCONNECT.
  4. PROVIDE 60A/35AT, 208V, 3-POLE FUSED DISCONNECT FOR ELECTRIC WATER HEATER. (1) #4 AWG, (1) #10 AWG G. 1-1/4°C.
  5. PROVIDE 100A/40AT, 208V, 2-POLE FUSED DISCONNECT FOR AHU-1. (2) #4 AWG, (1) #8 AWG G. 1-1/4°C.
  6. PROVIDE 60A/45AT, 208V, 2-POLE FUSED DISCONNECT FOR AHU-2. (2) #8 AWG, (1) #10 AWG G. 1°C.
  7. INTEGRAL 30A/20AT, 120V, 1-POLE FUSED DISCONNECT FOR EXHAUST FAN. (2) #12 AWG, 3/4°C.
  8. PROVIDE 30A/20AT, 208V, 2-POLE FUSED DISCONNECT FOR CONDENSING UNIT. (2) #12 AWG, (1) #12 AWG G. 3/4°C.
  9. PROVIDE 60A/45AT, 208V, 2-POLE FUSED DISCONNECT FOR CONDENSING UNIT. (2) #8 AWG, (1) #10 AWG G. 1°C.
  10. PAD MOUNTED EMERGENCY STAND-BY DIESEL GENERATOR. MOUNTED IN HURRICANE RATED SKIN-TIGHT ENCLOSURE, RATED FOR 96-HOUR RUNTIME. SEE ELECTRICAL ONE-LINE DIAGRAM FOR ADDITIONAL INFORMATION. CONNECT JACKET HEATER AND BATTERY CHARGER AS REQUIRED.
  11. PROVIDE 60A/45AT, 208V, 2-POLE FUSED DISCONNECT FOR CONDENSING UNIT. (2) #8 AWG, (1) #10 AWG G. 1°C.
  12. CONNECT GENERATOR ANNUNCIATOR PANEL AS REQUIRED IN SPECIFICATIONS.
  13. PROVIDE UNBROKEN CONDUIT TO RECEPTACLE.
  14. PROVIDE JUNCTION BOX FOR ELECTRICAL CONNECTION TO FACP.
  15. MOUNT DEVICE ABOVE SHELF FOR CONNECTION TO RADIO EQUIPMENT.
  16. CONFIRM LOCATION OF O.H. DOOR CONTROLS WITH OWNER PRIOR TO ROUGH-IN.

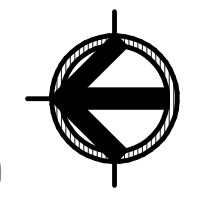
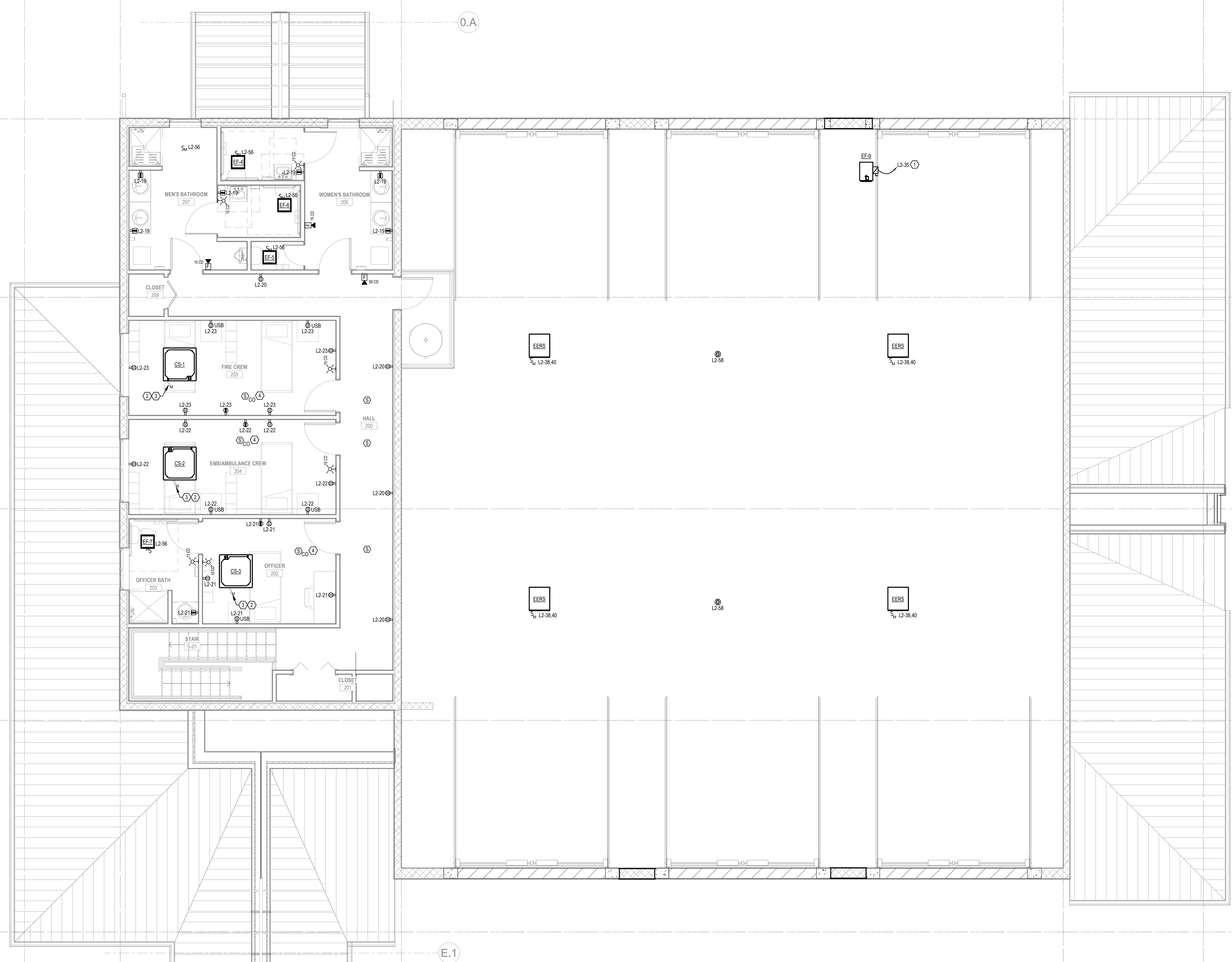
**1 FIRST FLOOR - POWER**  
1/4" = 1'-0"

DATE	5-03-22
DESCRIPTION	Addendum #1 - Water Heater
NO.	
STEPHEN B. COTTON, P.E.	PE License #65046
5/3/2022 11:12:23 AM	
<b>John P. Adams, AIA</b> <b>Jerome Bankovich, Jr., AIA, LEED</b> <b>Ethan J. Hine, AIA</b> <b>Jennifer Zaffuto, AIA, LEED, NCARB</b>	
<b>KTH ARCHITECTS</b> 1741 KOWANIS TRAIL • DUBOIS, PA • 814.371.1541 • F 814.371.8801 • KTHarch.com 880 NORTH HIGHLAND AVE. • ORLANDO, FL • 407.203.6707 • F 407.409.0550	
20073A	
<b>LAKE COUNTY</b> FIRE STATION NO. 71 ELECTRICAL LEVEL 1 POWER PLAN	
NOVEMBER 10, 2021	
33661 CR 473, LEESBURG, FL 34788	
<b>E2.1</b>	

**TLC ENGINEERING**  
 7370 Cabot Court, Suite 103  
 Melbourne, FL 32940  
 P 321.636.0274  
 COA 15  
 www.tlc-engineers.com  
 TLC No. 521157  
 THINK. LISTEN. CREATE.

1 SECOND FLOOR - POWER  
1/4" = 1'-0"

- KEYED NOTES:
- INTEGRAL 30AMP/240V, 1-POLE FUSED DISCONNECT FOR EF-1, (2) #12 AWG, 34°C
  - INDOOR UNIT FED FROM OUTDOOR UNIT CU-3. PROVIDE (2) 3/4" C BETWEEN OUTDOOR AND INDOOR UNITS FOR POWER AND CONTROLS.
  - LOCAL DISCONNECTING MEANS FOR CASSETTE UNIT.
  - COMBINATION SMOKE/CARBON MONOXIDE DETECTOR WITH LOW FREQUENCY BASE FOR SLEEPING ROOMS.



**TLC ENGINEERING**  
7370 Cabot Court, Suite 103  
Melbourne, FL 32940  
P: 321.636.0274  
www.tlc-engineers.com  
TLC No.: 521157  
COA 15  
©Copyright 2021  
THINK. LISTEN. CREATE.

100% CD Submittal - Bid Set

LAKE COUNTY  
FIRE STATION NO. 71  
ELECTRICAL LEVEL 2 POWER PLAN  
33661 CR 473, LEESBURG, FL 34788

E2.2

NOVEMBER 10, 2021

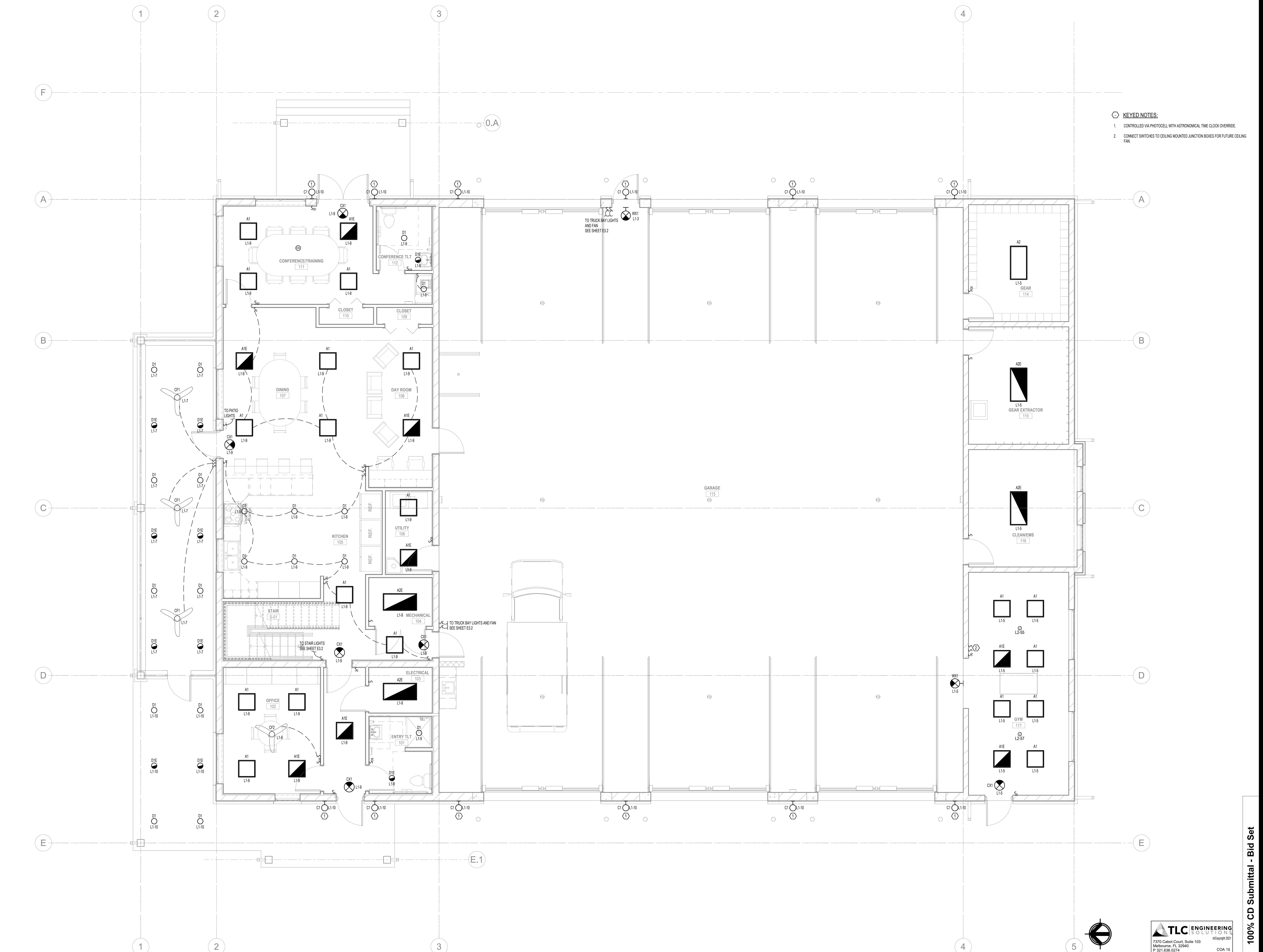
20073A

**KTH ARCHITECTS**

John P. Adams, AIA  
Jerome Bankovich, Jr., AIA, LEED  
Ethan J. Hine, AIA  
Jennifer Zaffuto, AIA, LEED, NCARB  
1741 KOWANIS TRAIL • DUBOIS PA • 814.371.1541 • F: 814.371.8801 • KTHarch.com  
880 NORTH HIGHLAND AVE. • ORLANDO, FL • 407.203.6707 • F: 407.493.0550

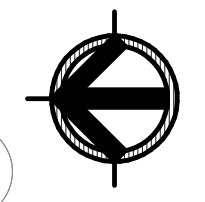
STEPHEN B. GOTTON, P.E.  
PE License #60046  
5/3/2022 11:12:27 AM

NO.	DESCRIPTION	DATE



- KEYED NOTES:**
- CONTROLLED VIA PHOTOCELL WITH ASTRONOMICAL TIME CLOCK OVERRIDE.
  - CONNECT SWITCHES TO CEILING MOUNTED JUNCTION BOXES FOR FUTURE CEILING FAN.

**1 FIRST FLOOR - LIGHTING**  
1/4" = 1'-0"



**TLC ENGINEERING**  
7370 Cabot Court, Suite 103  
Melbourne, FL 32940  
P 321.636.0274  
COA 15  
www.tlc-engineers.com  
TLC No: 521157  
THINK. LISTEN. CREATE.

100% CD Submittal - Bid Set

**LAKE COUNTY**  
FIRE STATION NO. 71  
ELECTRICAL LEVEL 1 LIGHTING PLAN

NOVEMBER 10, 2021

**E3.1**

NO.	DESCRIPTION	DATE

STEPHEN B. GOTTON, P.E.  
PE License #60046  
5/3/2022 11:12:31 AM

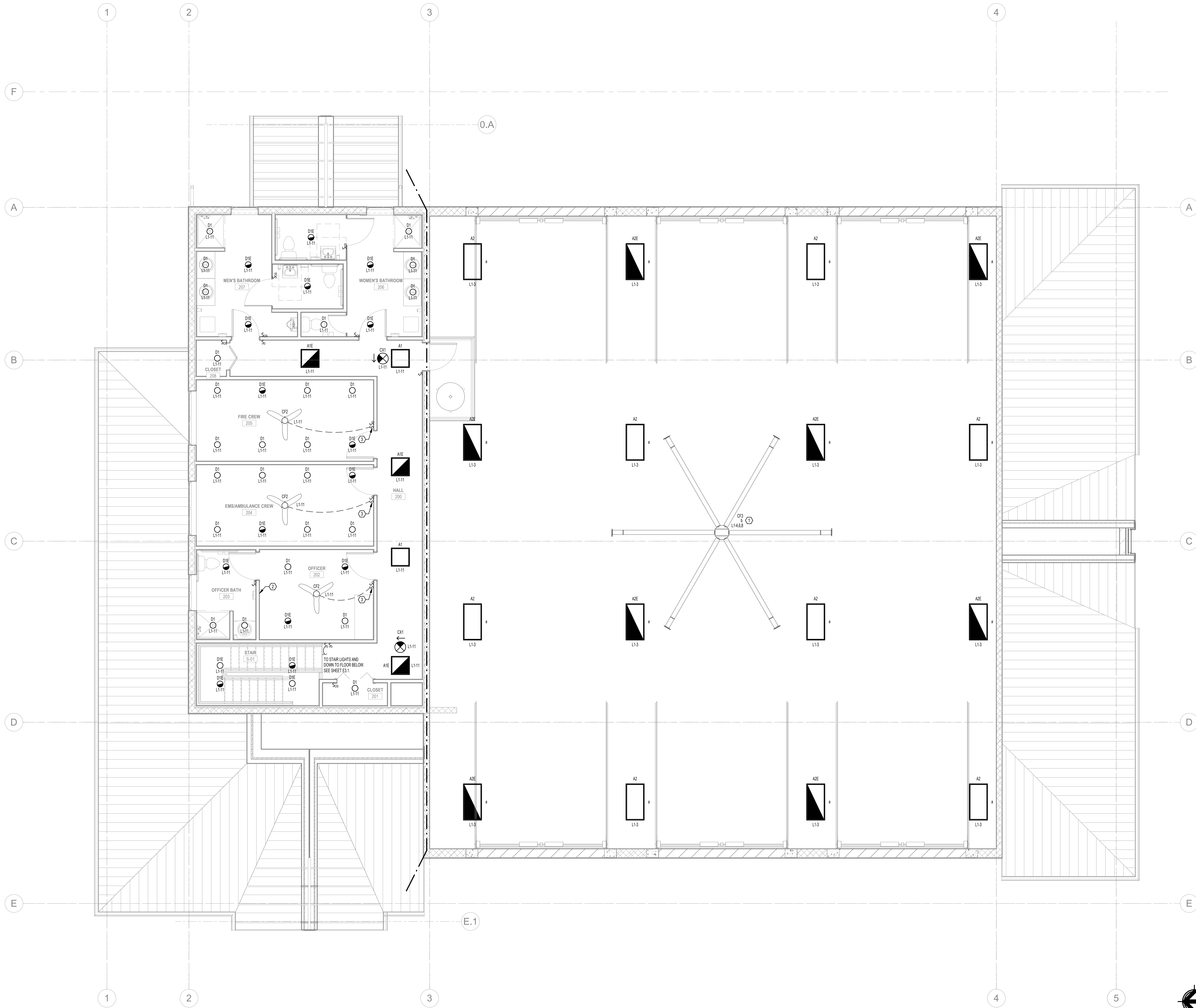
**John P. Adams, AIA**  
**Jerome Bankovich, Jr., AIA, LEED**  
**Ethan J. Hine, AIA**  
**Jennifer Zaffuto, AIA, LEED, NCARB**

1741 KOWANIS TRAIL • DUBOIS PA • 814.371.1941 • F 814.371.8801 • KTHarch.com  
880 NORTH HIGHLAND AVE • ORLANDO, FL • 407.203.6707 • F 407.409.0650

**KTH ARCHITECTS**

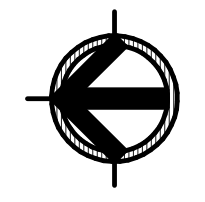
20073A

33661 CR 473, LEESBURG, FL 34788



- KEYED NOTES:**
1. PROVIDE RELAY FOR CONNECTION OF FAN TO FIRE ALARM CONTROL PANEL.
  2. PROVIDE WALL-MOUNTED LIGHTING CONTROLLER IN OFFICER'S ROOM WITH DRY CONTACT FOR CONNECTION TO FIRE FIGHTER ALERT SYSTEM. UPON RECEIVING SIGNAL FROM FIRE FIGHTER ALERT SYSTEM, CONTROLLER SHALL RAISE LIGHT LEVELS IN SLEEPING ROOMS GRADUALLY. BASIS OF DESIGN: ACQUITY BRANDS FRESKO FOS-TTSNDWH. REFER TO DETAILS 7E1.3, 7E2.4, 7E2.2 FOR WIRING AND CONNECTION DIAGRAMS. CONFIRM DEVICE LOCATION WITH OWNER PRIOR TO ROUGH-IN.
  3. FAN SPEED CONTROL SWITCH: MONTE CARLO ESSWCA.

**1 SECOND FLOOR - LIGHTING**  
1/4" = 1'-0"



**TLC ENGINEERING**  
7370 Cabot Court, Suite 103  
Melbourne, FL 32940  
P 321.636.0274  
COA 15  
www.tlc-engineers.com  
TLC No.: 521157  
THINK. LISTEN. CREATE.

100% CD Submittal - Bid Set

**LAKE COUNTY**  
FIRE STATION NO. 71  
ELECTRICAL LEVEL 2 LIGHTING PLAN  
33661 CR 473, LEESBURG, FL 34788

**E3.2**

**KTH ARCHITECTS**  
1741 KOWANIS TRAIL • DUBOIS, PA • 814.371.1541 • F 814.371.8801 • KTHarch.com  
880 NORTH HIGHLAND AVE. • ORLANDO, FL • 407.203.6707 • F 407.409.0650

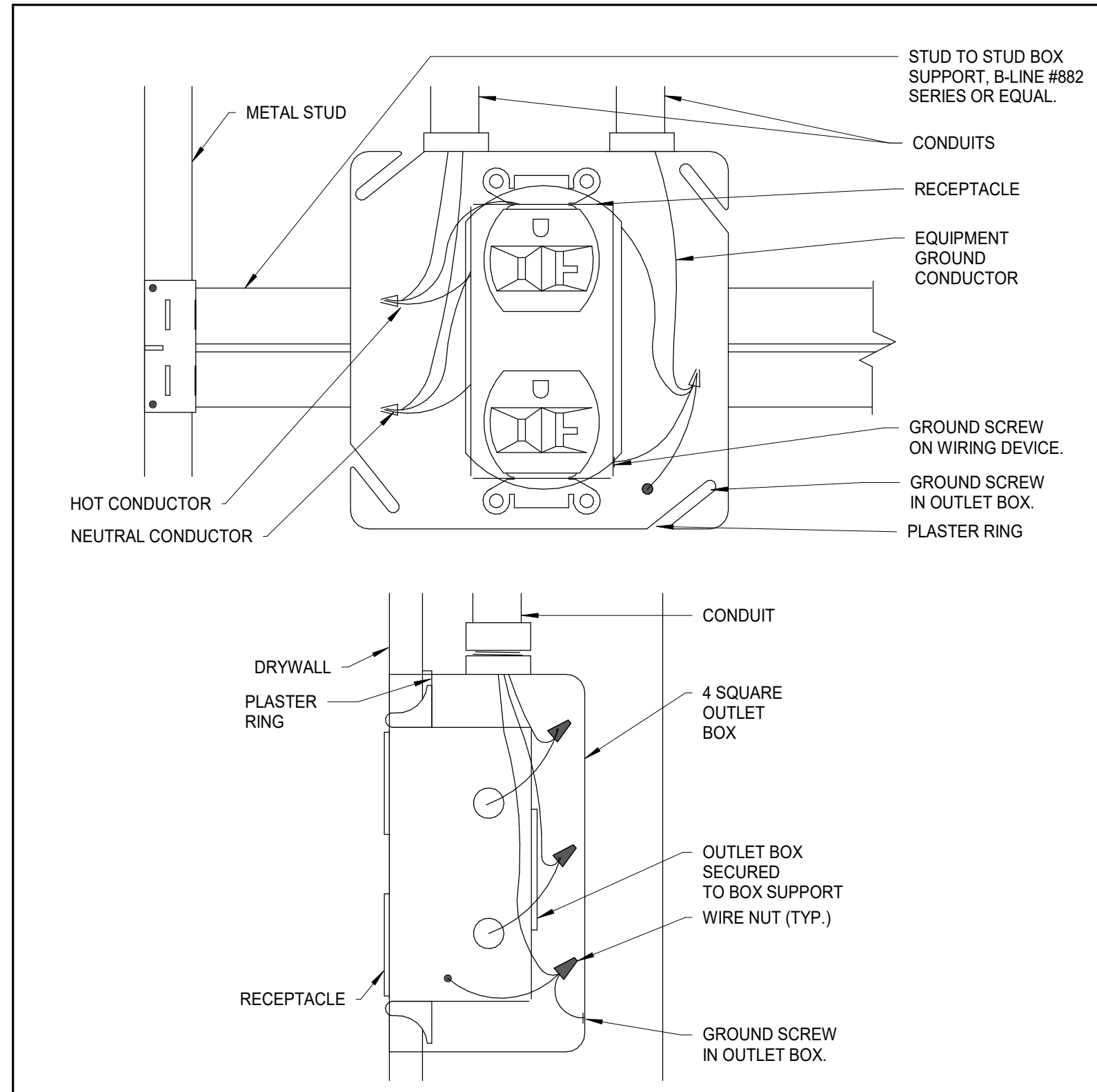
**John P. Adams, AIA**  
**Jerome Bankovich, Jr., AIA, LEED**  
**Ethan J. Hine, AIA**  
**Jennifer Zaffuto, AIA, LEED, NCARB**

STEPHEN B. COTTON, P.E.  
PE License #60046  
5/3/2022 11:12:36 AM

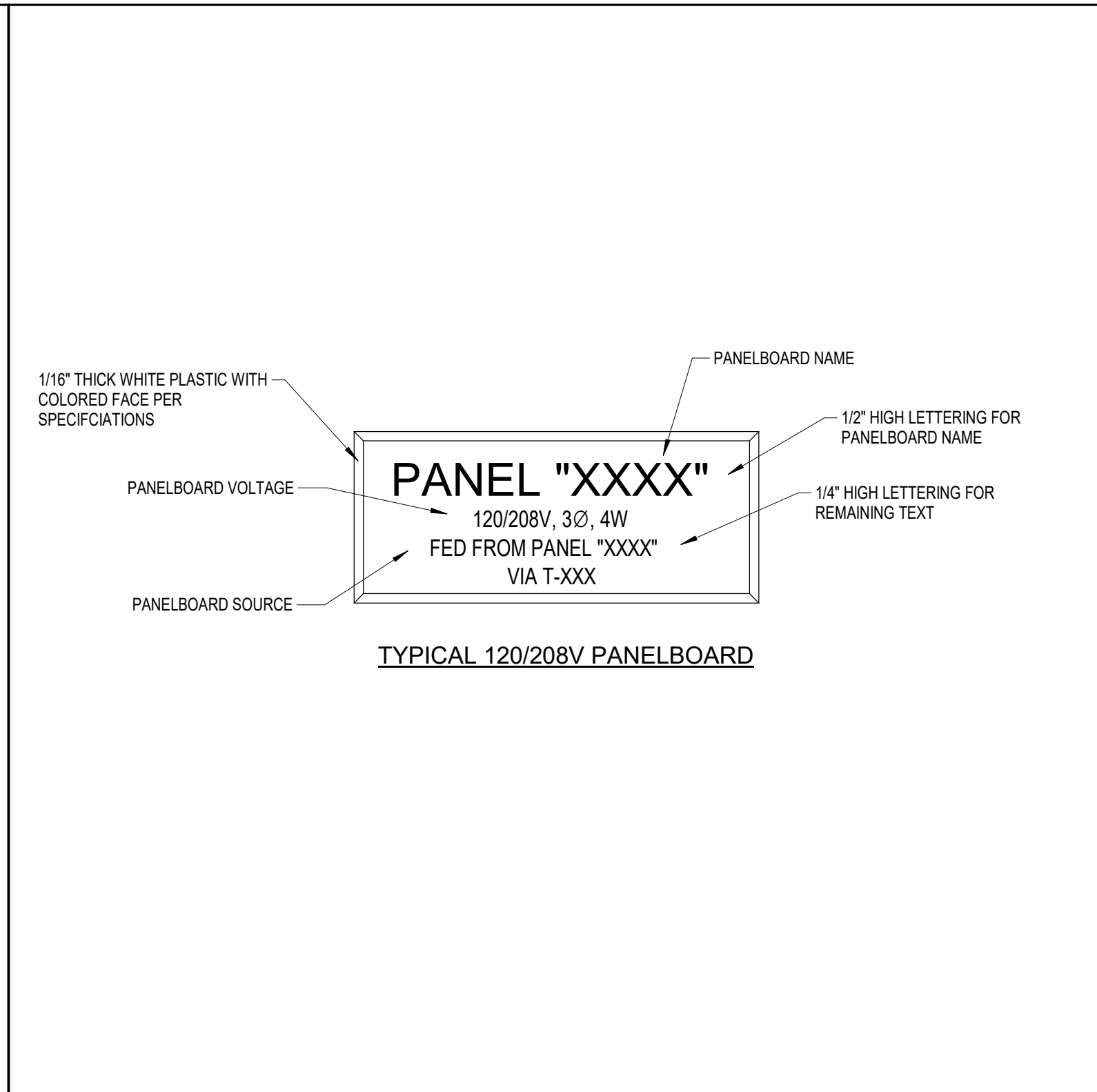
NO.	DESCRIPTION	DATE



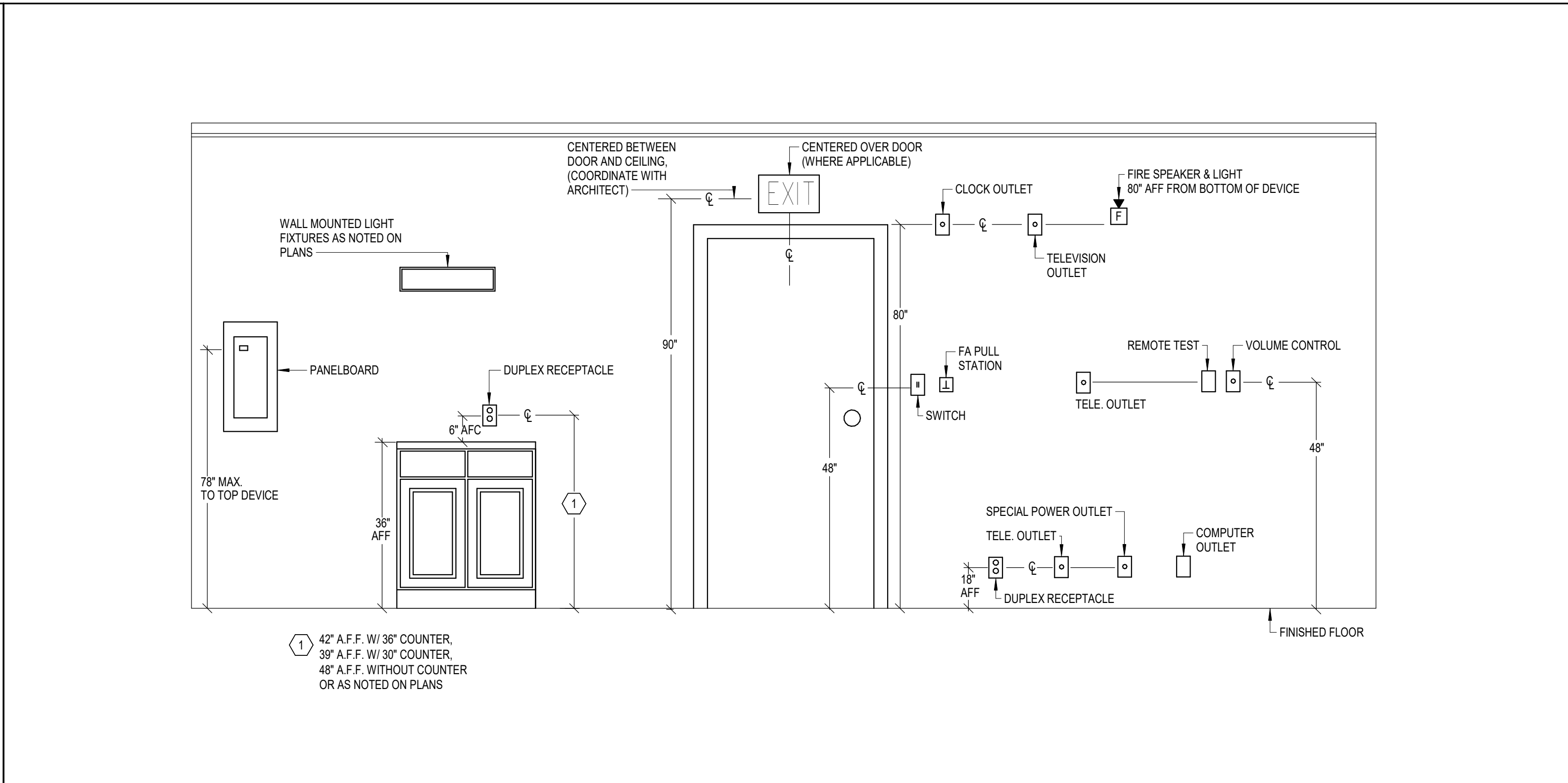




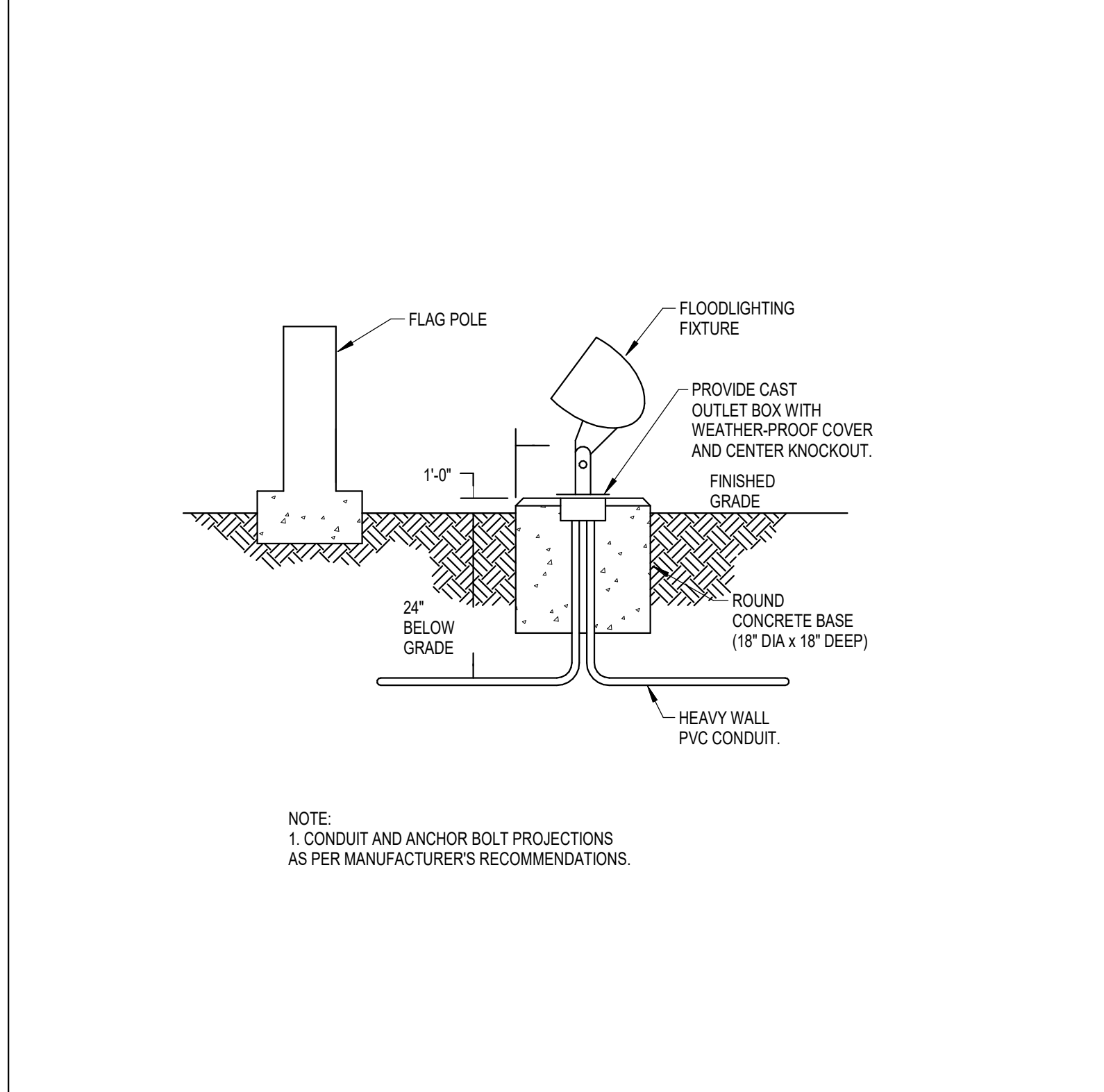
**TYPICAL RECEPTACLE MOUNTING DETAIL**  
No Scale



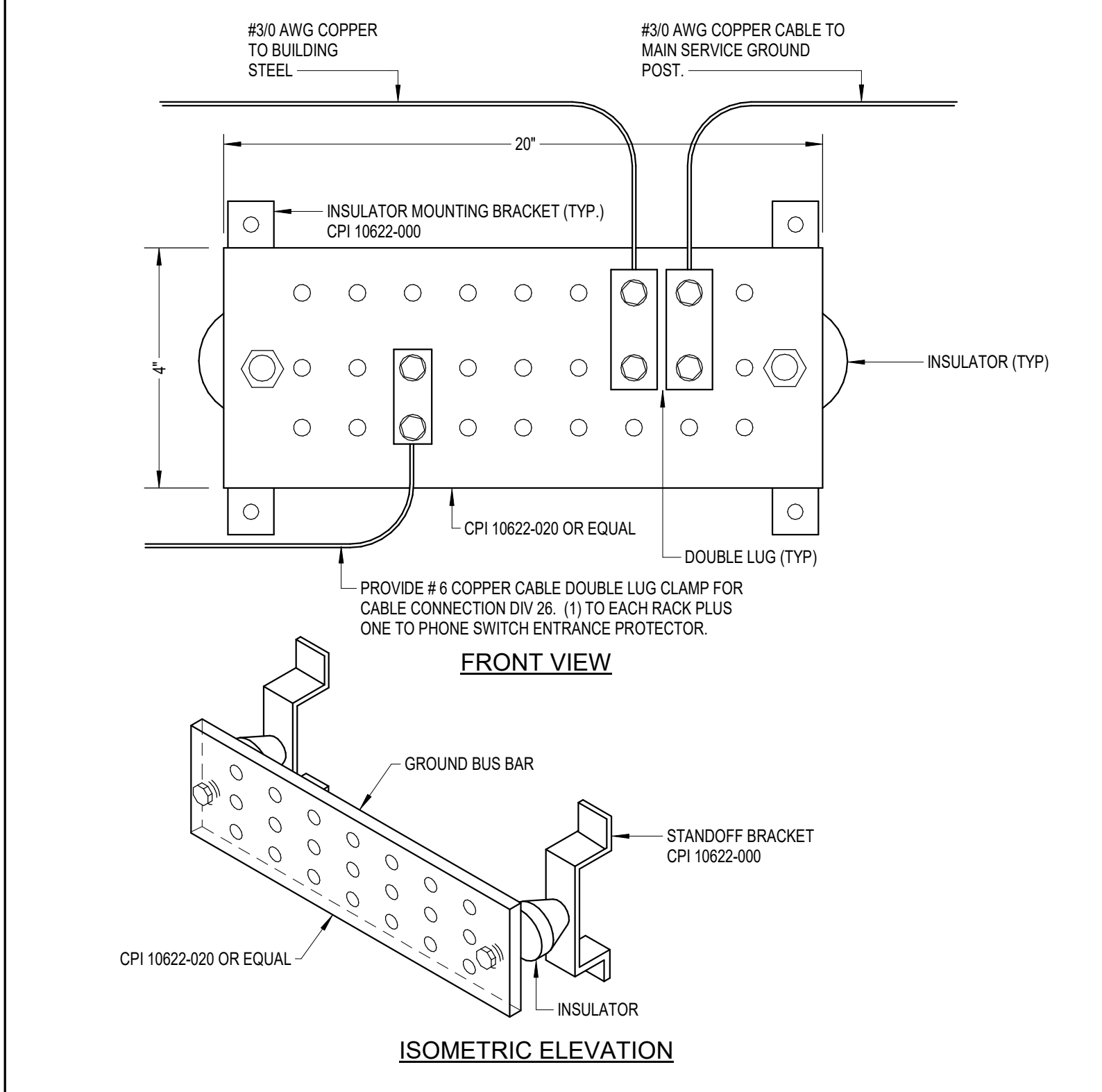
**PANELBOARD NAMEPLATE**  
No Scale



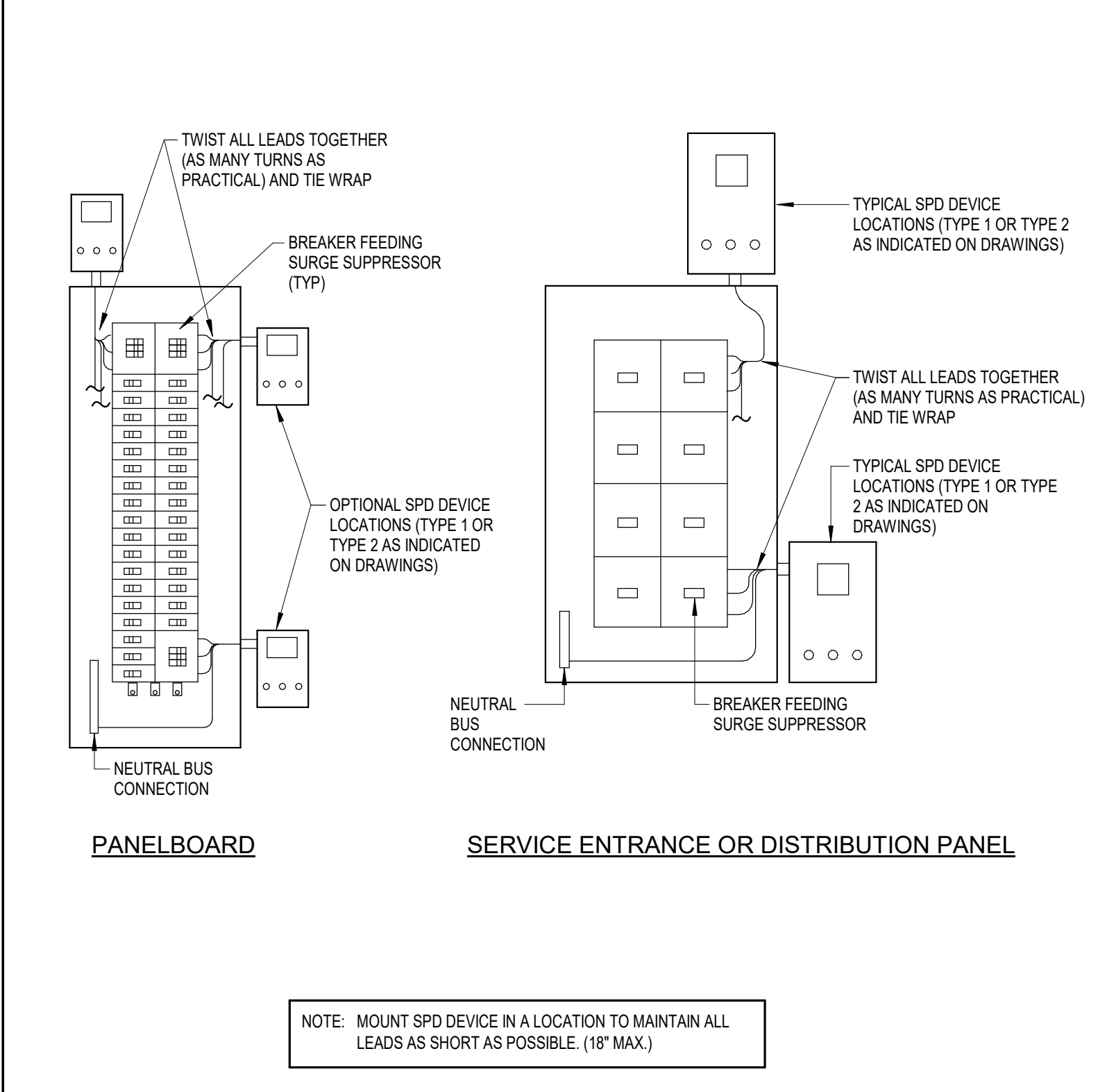
**MOUNTING HEIGHTS**  
No Scale



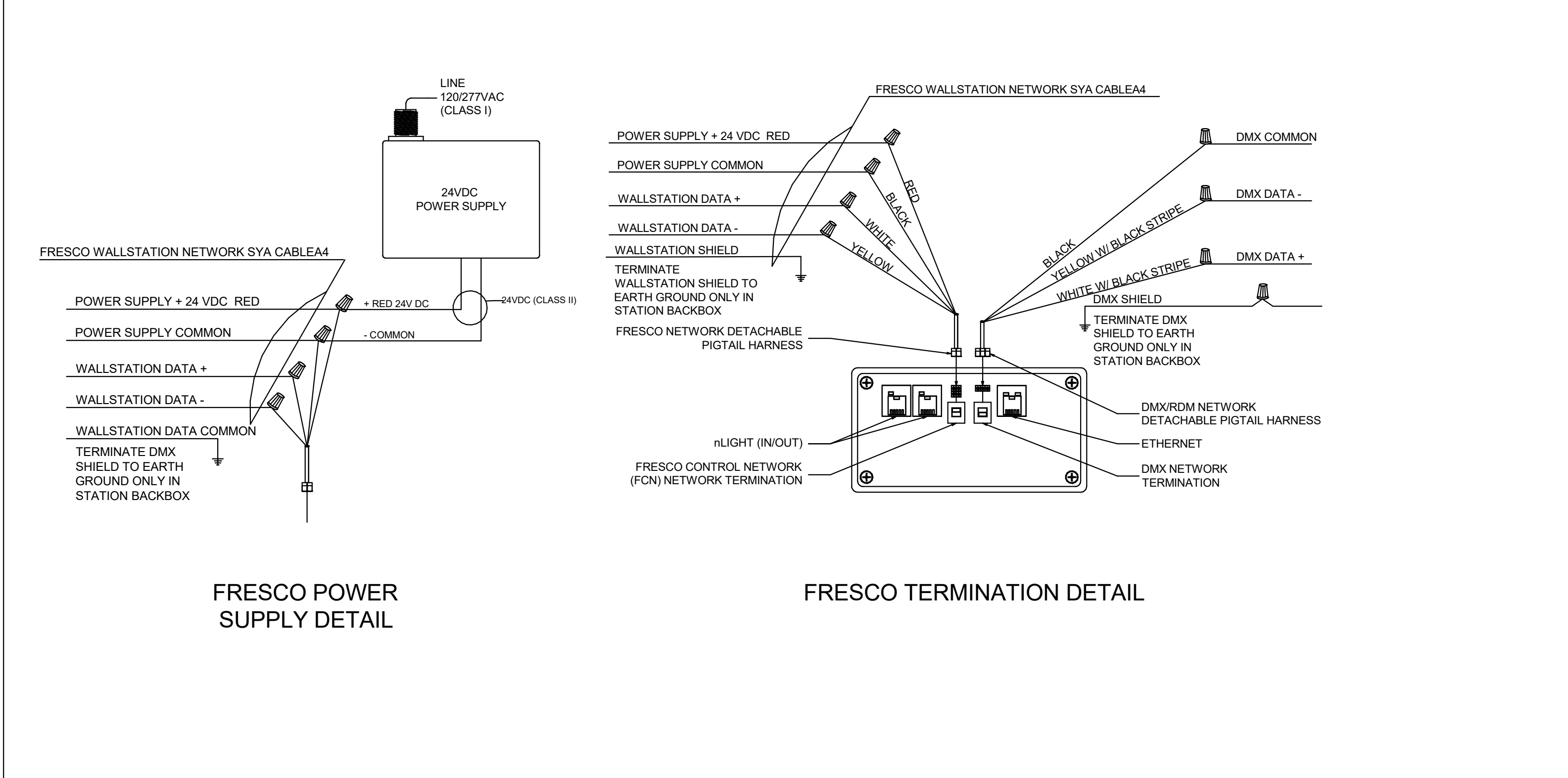
**FLAG POLE LIGHT FIXTURE MOUNTING**  
No Scale



**GROUND BAR**  
No Scale



**SPD EXTERIOR MOUNT INSTALLATION**  
No Scale



**SCENE CONTROLLER WIRING AND TERMINATION**  
No Scale

NO.	DESCRIPTION	DATE

STEPHEN B. COTTON, P.E.  
PE License #6046  
5/3/2022 11:12:41 AM  
John P. Adams, AIA  
Jerome Bankovich, Jr., AIA, LEED  
Ethan J. Hine, AIA  
Jennifer Zaffuto, AIA, LEED, NCARB

**KTH ARCHITECTS**  
1741 KOWANIS TRAIL • DUBOIS PA • 814.371.1941 • F 814.371.8801 • KTHarch.com  
800 NORTH HIGHLAND AVE • ORLANDO, FL • 407.203.6707 • F 407.493.0650

20073A

LAKE COUNTY  
FIRE STATION NO. 71  
ELECTRICAL DETAILS  
33661 CR 473, LEESBURG, FL 34788

NOVEMBER 10, 2021  
E6.1

**TLC ENGINEERING**  
7370 Cabot Court, Suite 103  
Melbourne, FL 32940  
P 321.636.0274  
CGA 15  
www.tlc-engineers.com  
TLC No.: 521157  
THINK. LISTEN. CREATE.

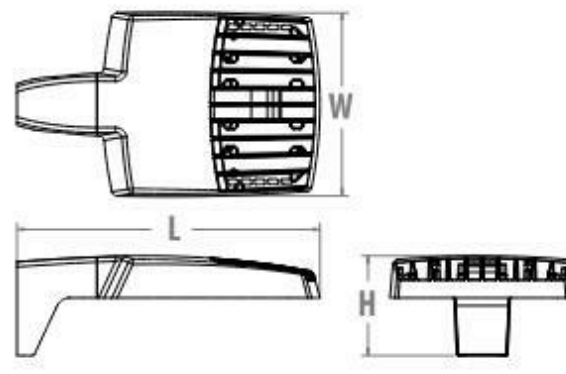


### RSX1 LED Area Luminaire



#### Specifications

EPA (ft²@0°):	0.57 ft² (0.05 m²)
Length:	21.8" (55.4 cm) (SPA mount)
Width:	13.3" (33.8 cm)
Height:	3.0" (7.6 cm) Main Body 7.2" (18.4 cm) Arm
Weight: (SPA mount):	22.0 lbs (10.0 kg)



Category	
Number	
Name	
Type	SLA

#### Introduction

The new RSX LED Area family delivers maximum value by providing significant energy savings, long life and outstanding photometric performance at an affordable price. The RSX1 delivers 7,000 to 17,000 lumens allowing it to replace 70W to 400W HID luminaires.

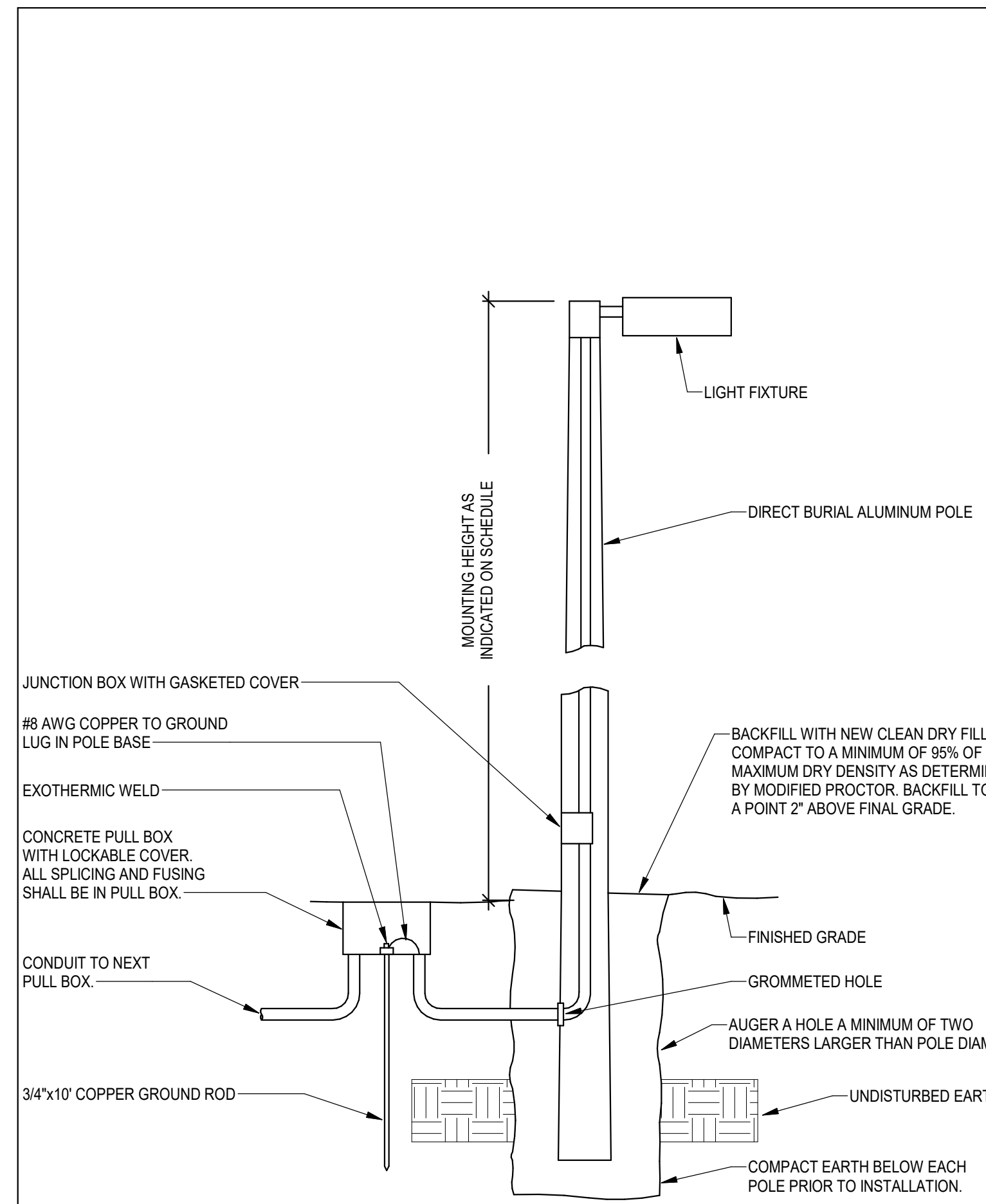
The RSX features an integral universal mounting mechanism that allows the luminaire to be mounted on most existing drill hole patterns. This "no-drill" solution provides significant labor savings. An easy-access door on the bottom of mounting arm allows for wiring without opening the electrical compartment. A mast arm adaptor, adjustable integral slipfitter and other mounting configurations are available.

#### Ordering Information

RSX1 LED	P2	40K	R4	MVOLT	RPA
Series	Performance Package	Color Temperature	Distribution	Voltage	Mounting
RSX1 LED	P1	30K 3000K	R2 Type 2 Wide	MVOLT (120V-277V) <sup>1</sup>	SPA Square pole mounting (3.0" min. SQ pole for 1 at 90°, 3.5" min. SQ pole for 2, 3, 4 at 90°)
	P2	40K 4000K	R3 Type 3 Wide	XVOLT (347V-480V) <sup>1</sup>	RPA Round pole mounting (3.2" min. dia. RND pole for 2, 3, 4 at 90°, 3 at 180°, 3 at 100°)
	P3	50K 5000K	R5 Type 5 Wide	XVOLT (277V-480V) <sup>1</sup>	MA Mast arm adaptor (fits 2-3/8" OD horizontal sensor)
	P4		R4 Type 4 Short		IS Adjustable slipfitter (fits 2-3/8" OD sensor) <sup>1</sup>
			R4S Type 4 Short		WBA Wall bracket <sup>1</sup>
			R5 Type 5 Wide <sup>1</sup>	120 <sup>1</sup> 277 <sup>1</sup>	WBAS Wall bracket with surface conduit box
			R5S Type 5 Short <sup>1</sup>	208 <sup>1</sup> 347 <sup>1</sup>	AASP Adjustable tilt arm square pole mounting <sup>1</sup>
			AIR Automatic Front Row	240 <sup>1</sup> 480 <sup>1</sup>	AARP Adjustable tilt arm round pole mounting <sup>1</sup>
			AIR90 Automatic Front Row Right Rotated		AAWS Adjustable tilt arm with wall bracket <sup>1</sup>
			AIRL90 Automatic Front Row Left Rotated		AAWS Adjustable tilt arm wall bracket and surface conduit box <sup>1</sup>

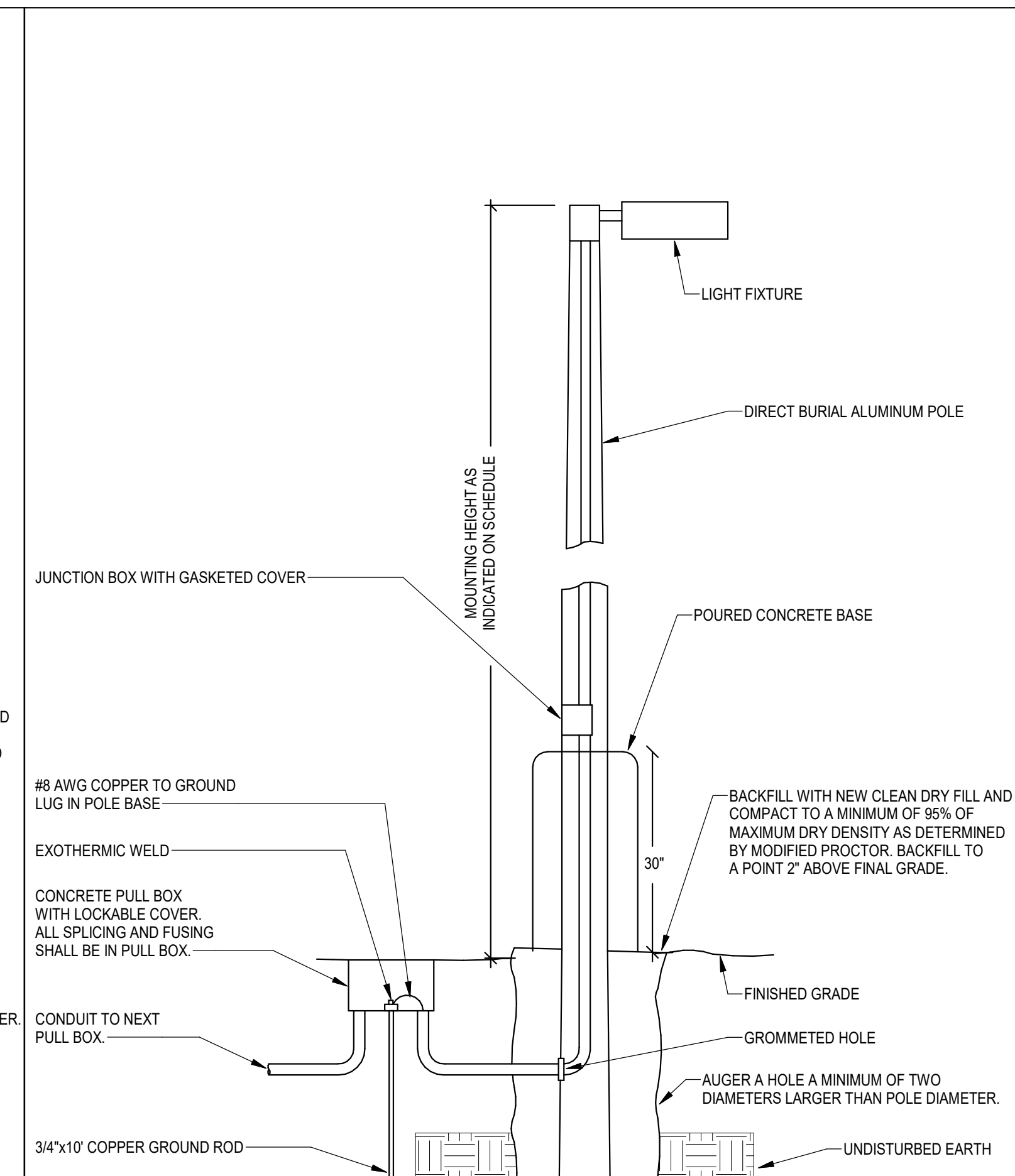
NLTAIR2 PIRHN	DDBXD
Options	Finish
<b>Shipped Installed</b>	<b>Shipped Installed</b>
H5 House side shield <sup>1</sup>	**Standalone and Networked Sensors/Controls (factory default settings, see table page 9)
FE Photocell; button cycle <sup>1</sup>	NLSMR Single AIR generator 2" <sup>1</sup> x 1"
FEK Photocell; external threaded; adjustable <sup>1</sup>	PIRHN Networked, Bi-Level motion/ambient sensor (for use with NLTAIR2) <sup>1</sup> x 1"
PER7 Seven-wire twist-lock receptacle only (no controls) <sup>1</sup> x 1"	BAA Buy America(s) Act Compliant
CE34 Conduit entry 3/4" NPT (Qty 2)	
SF Single fuse (120, 277, 347) <sup>1</sup>	
DF Double fuse (208, 240, 480) <sup>1</sup>	
SPD20K 20kV Surge stick (100V standard)	
FAO Field adjustable output <sup>1</sup>	
DMG 0-10V dimming output; extend out back of housing for external control (control extend separate) <sup>1</sup>	
	<b>Shipped Separately (requires some field assembly)</b>
	EGS External glare shield <sup>1</sup>
	EGFV External glare full view (360° around light aperture) <sup>1</sup>
	BS Bid spikes <sup>1</sup>

LITHONIA LIGHTING One Lithonia Way • Conyers, Georgia 30012 • Phone: 1-800-705-SERV (7378) • www.lithonia.com Lithonia RSX1 Area LED Rev. 05/04/21 Page 1 of 9



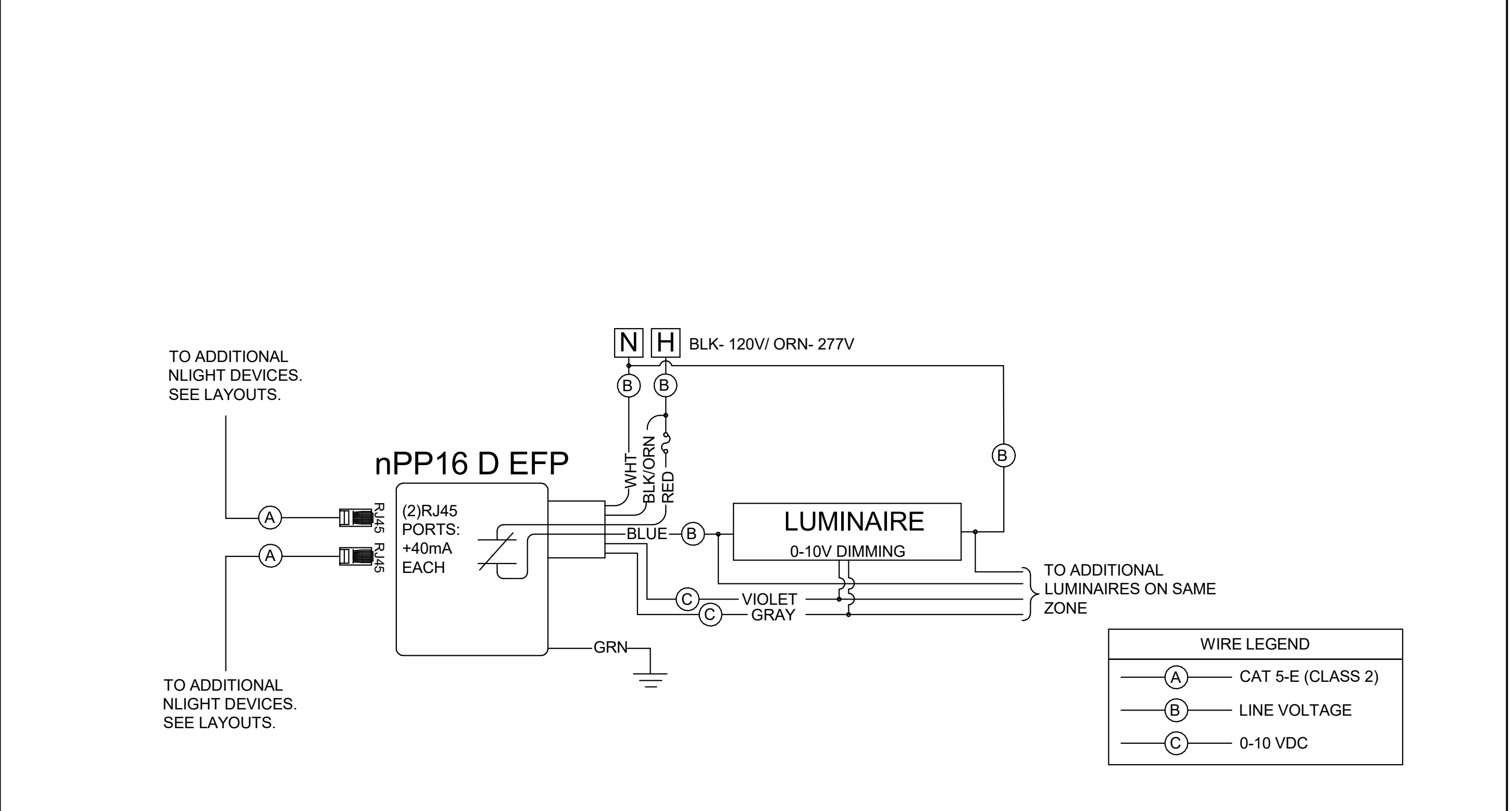
- NOTES:
- INTERNAL MOUNTING STUD SHALL BE PROVIDED FOR GROUND CONNECTION. PROVIDE #8 AWG FROM HANDHOLE TO LUMINAIRE.
  - ADD LIGHTNING PROTECTION ON TOP OF LUMINAIRE TO COMPLY WITH NFPA 780.

DIRECT BURIED POLE - NO CONCRETE BUMPER  
No Scale

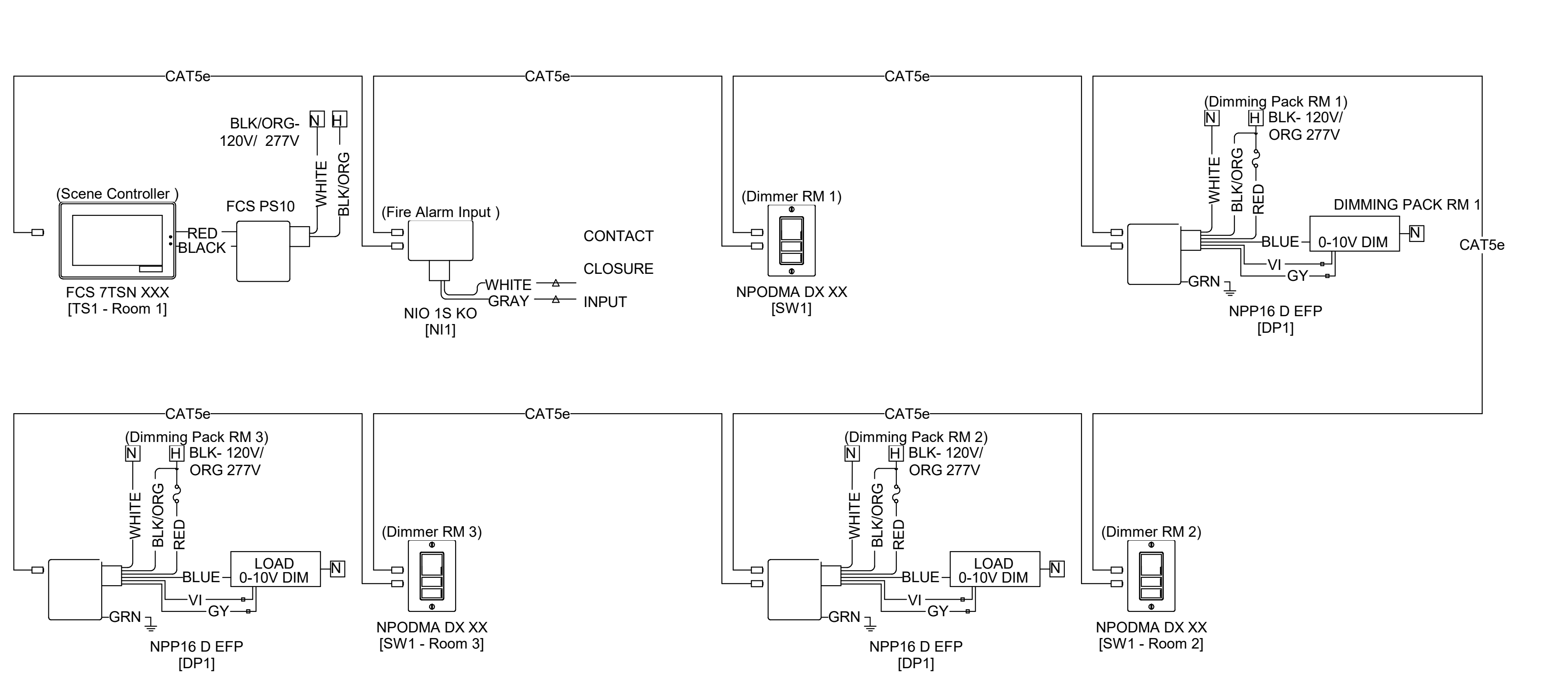


- NOTES:
- INTERNAL MOUNTING STUD SHALL BE PROVIDED FOR GROUND CONNECTION. PROVIDE #8 AWG FROM HANDHOLE TO LUMINAIRE.
  - ADD LIGHTNING PROTECTION ON TOP OF LUMINAIRE TO COMPLY WITH NFPA 780.

DIRECT BURIED POLE - 30" CONCRETE BUMPER  
No Scale



LIGHTING CONTROLS - POWER PACK WIRING DIAGRAM  
No Scale



LIGHTING CONTROLS - SLEEPING ROOMS  
No Scale