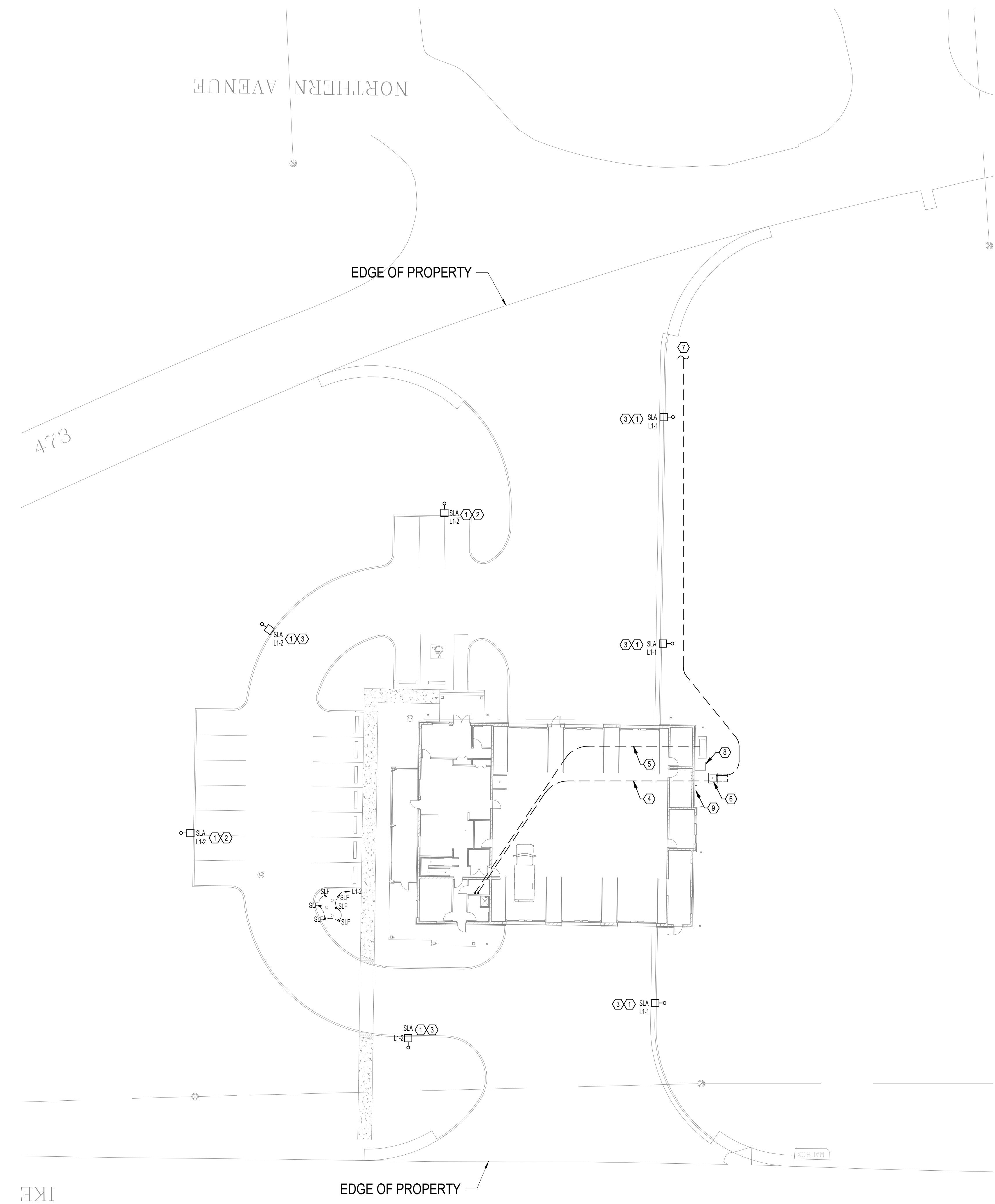


BASIC MATERIALS		FIRE ALARM / DETECTION SYSTEM		VOICE AND DATA RACEWAY SYSTEM		ABBREVIATIONS (CONT.)	
SYMBOL	DESCRIPTION	SYMBOL	DESCRIPTION	SYMBOL	DESCRIPTION	SYMBOL	DESCRIPTION
DEVICE ABBREVIATION TAGS:		SYMBOL DESCRIPTION		SYMBOL DESCRIPTION		SYMBOL DESCRIPTION	
6C	POKE-THRU WITH 6" CORE DRILL	MH	MANHOLE	NFPA 1 LEGACY		IEEE	INSTITUTE OF ELECTRICAL AND ELECTRONIC ENGINEERS
82	POKE-THRU WITH 8" CORE DRILL	PH	PULLBOX	☐	MANUAL PULL STATION	IES	ILLUMINATING ENGINEERING SOCIETY
4G	FOUR-GANG FLOOR BOX	HT	HANDHOLE	☉	CEILING SMOKE DETECTOR, PHOTOELECTRIC TYPE UNLESS OTHERWISE NOTED	IMC	INTERMEDIATE METAL CONDUIT
6G	SIX-GANG FLOOR BOX	T	TRANSFORMER	☉	E = ELEVATOR WITH RECALL CONTACTS I = IONIZATION CO = COMBINATION SMOKE/CARBON MONOXIDE DETECTION	IN	INCHES
8G	EIGHT-GANG FLOOR BOX	ATS	AUTOMATIC TRANSFER SWITCH	☉	DUCT SMOKE DETECTOR	IPCEA	INSULATED POWER CABLE ENGINEERS ASSOCIATION
C	RECEPTACLE CONTROLLED PER ASHRAE 90.1 (2010); PROVIDE POWER PACK FOR RECEPTACLE CIRCUIT, TO BE CONTROLLED THROUGH LOCAL ROOM OCCUPANCY SENSORS; PROVIDE DEVICE WITH BLUE DOT OR UNIVERSAL POWER SYMBOL	30AR	NON-FUSED DISCONNECT SWITCH, RATING AS NOTED NF = NON-FUSED	☉	BEAM SMOKE DETECTOR	IT	INSTANTANEOUS TRIP
ETR	EXISTING TO REMAIN	30AR	FUSED DISCONNECT AF = AMPERE RATING OF FUSE AR = AMPERE RATING OF SWITCH 4X SS = NEMA 4X STAINLESS STEEL ENCLOSURE	☉	HEAT DETECTOR 135°F FIXED TEMPERATURE, UNLESS OTHERWISE NOTED, CEILING MOUNTED	JB OR J-BOX	JUNCTION BOX
H	HOSPITAL GRADE	MCP	MOTOR CONTROL CENTER	☉	SUPERVISED ADDRESSABLE FIRE ALARM CONTROL RELAY UNLESS OTHERWISE NOTED	KCMIL	KILOVOLT CIRCULAR MILS
IG	ISOLATED GROUND (ORANGE DEVICE)	30AR	3-POLE	☉	HORN ONLY, WALL MOUNTED	KVA	KILOVOLT AMPERES
RL	RELOCATED	30AR	3-POLE	☉	STROBE, CEILING MOUNTED, 75 CD UNLESS OTHERWISE NOTED CD = CANDELA RATING	KW	KILOWATT
TR	TAMPER RESISTANT	30AR	3-POLE	☉	COMBINATION SPEAKER/STROBE, CEILING MOUNTED, 75CD UNLESS OTHERWISE NOTED CD = CANDELA RATING	KWH	KILOWATT HOURS
TV	RECEPTACLE MOUNTED ADJACENT TO TV OUTLET, COORDINATE HEIGHT W/ ARCHITECT	30AR	3-POLE	☉	HORN ONLY, WALL MOUNTED	LBS	POUNDS
U	DUPLEX RECEPTACLE WITH (2) USB PORTS	30AR	3-POLE	☉	STROBE, WALL MOUNTED, 75CD UNLESS OTHERWISE NOTED CD = CANDELA RATING	LED	LIGHT EMITTING DIODE
WP	WEATHERPROOF	30AR	3-POLE	☉	STROBE, WALL MOUNTED, 75CD UNLESS OTHERWISE NOTED CD = CANDELA RATING	LP	LIGHTNING PROTECTION
Sa	SINGLE POLE SWITCH (SUBSCRIPT INDICATES ITEM CONTROLLED)	30AR	3-POLE	☉	STROBE, WALL MOUNTED, 75CD UNLESS OTHERWISE NOTED CD = CANDELA RATING	LTG	LIGHTNING
S3	THREE-WAY SWITCH	30AR	3-POLE	☉	STROBE, WALL MOUNTED, 75CD UNLESS OTHERWISE NOTED CD = CANDELA RATING	LTG	LONG TIME, SHORT TIME, INSTANTANEOUS, GROUND
S4	FOUR-WAY SWITCH	30AR	3-POLE	☉	STROBE, WALL MOUNTED, 75CD UNLESS OTHERWISE NOTED CD = CANDELA RATING	LSI	LONG TIME, SHORT TIME, INSTANTANEOUS, ALARM
Sk	SINGLE POLE KEY SWITCH	30AR	3-POLE	☉	STROBE, WALL MOUNTED, 75CD UNLESS OTHERWISE NOTED CD = CANDELA RATING	LSI	LONG TIME, SHORT TIME, INSTANTANEOUS
S1	DIGITAL TIMER SWITCH W/ 5 MIN. WARNING FLASH	30AR	3-POLE	☉	STROBE, WALL MOUNTED, 75CD UNLESS OTHERWISE NOTED CD = CANDELA RATING	LSI	LONG TIME, SHORT TIME, INSTANTANEOUS
SOSab	WALL MOUNTED DUAL TECHNOLOGY OCCUPANCY SENSOR SWITCH, DUAL RELAY	30AR	3-POLE	☉	STROBE, WALL MOUNTED, 75CD UNLESS OTHERWISE NOTED CD = CANDELA RATING	LSI	LONG TIME, SHORT TIME, INSTANTANEOUS
SOS	WALL MOUNTED DUAL TECHNOLOGY OCCUPANCY SENSOR SWITCH	30AR	3-POLE	☉	STROBE, WALL MOUNTED, 75CD UNLESS OTHERWISE NOTED CD = CANDELA RATING	LSI	LONG TIME, SHORT TIME, INSTANTANEOUS
SVS	WALL MOUNTED DUAL TECHNOLOGY VACANCY SENSOR SWITCH	30AR	3-POLE	☉	STROBE, WALL MOUNTED, 75CD UNLESS OTHERWISE NOTED CD = CANDELA RATING	LSI	LONG TIME, SHORT TIME, INSTANTANEOUS
S0,OS	WALL MOUNTED DUAL TECHNOLOGY DIMMING/OCC SENSOR SWITCH	30AR	3-POLE	☉	STROBE, WALL MOUNTED, 75CD UNLESS OTHERWISE NOTED CD = CANDELA RATING	LSI	LONG TIME, SHORT TIME, INSTANTANEOUS
S1V	LOW VOLTAGE SWITCH	30AR	3-POLE	☉	STROBE, WALL MOUNTED, 75CD UNLESS OTHERWISE NOTED CD = CANDELA RATING	LSI	LONG TIME, SHORT TIME, INSTANTANEOUS
S1Vd	LOW VOLTAGE OVERRIDE SWITCH	30AR	3-POLE	☉	STROBE, WALL MOUNTED, 75CD UNLESS OTHERWISE NOTED CD = CANDELA RATING	LSI	LONG TIME, SHORT TIME, INSTANTANEOUS
Sf	FAN SWITCH	30AR	3-POLE	☉	STROBE, WALL MOUNTED, 75CD UNLESS OTHERWISE NOTED CD = CANDELA RATING	LSI	LONG TIME, SHORT TIME, INSTANTANEOUS
Ss	MOTOR RATED SWITCH	30AR	3-POLE	☉	STROBE, WALL MOUNTED, 75CD UNLESS OTHERWISE NOTED CD = CANDELA RATING	LSI	LONG TIME, SHORT TIME, INSTANTANEOUS
Sd	DIMMER SWITCH, LINE VOLTAGE	30AR	3-POLE	☉	STROBE, WALL MOUNTED, 75CD UNLESS OTHERWISE NOTED CD = CANDELA RATING	LSI	LONG TIME, SHORT TIME, INSTANTANEOUS
S0	WALL MOUNTED DUAL TECHNOLOGY OCCUPANCY SENSOR	30AR	3-POLE	☉	STROBE, WALL MOUNTED, 75CD UNLESS OTHERWISE NOTED CD = CANDELA RATING	LSI	LONG TIME, SHORT TIME, INSTANTANEOUS
S0	CEILING MOUNTED DUAL TECHNOLOGY OCCUPANCY SENSOR	30AR	3-POLE	☉	STROBE, WALL MOUNTED, 75CD UNLESS OTHERWISE NOTED CD = CANDELA RATING	LSI	LONG TIME, SHORT TIME, INSTANTANEOUS
S0	DAYLIGHT SENSOR CEILING MOUNTED	30AR	3-POLE	☉	STROBE, WALL MOUNTED, 75CD UNLESS OTHERWISE NOTED CD = CANDELA RATING	LSI	LONG TIME, SHORT TIME, INSTANTANEOUS
S0	DAYLIGHT SENSOR WALL MOUNTED	30AR	3-POLE	☉	STROBE, WALL MOUNTED, 75CD UNLESS OTHERWISE NOTED CD = CANDELA RATING	LSI	LONG TIME, SHORT TIME, INSTANTANEOUS
S0	VACANCY SENSOR CEILING MOUNTED	30AR	3-POLE	☉	STROBE, WALL MOUNTED, 75CD UNLESS OTHERWISE NOTED CD = CANDELA RATING	LSI	LONG TIME, SHORT TIME, INSTANTANEOUS
S0	VACANCY SENSOR WALL MOUNTED	30AR	3-POLE	☉	STROBE, WALL MOUNTED, 75CD UNLESS OTHERWISE NOTED CD = CANDELA RATING	LSI	LONG TIME, SHORT TIME, INSTANTANEOUS
S0	PHOTOCELL MOUNTED ON ROOF FACING NORTH	30AR	3-POLE	☉	STROBE, WALL MOUNTED, 75CD UNLESS OTHERWISE NOTED CD = CANDELA RATING	LSI	LONG TIME, SHORT TIME, INSTANTANEOUS
S0	NOTE: DIAGONAL MARKS INDICATED ON ANY DEVICE REPRESENTS DEVICE CONNECTED TO EMERGENCY CIRCUIT (RED DEVICE FOR RECEPTACLE); TYPICAL FOR ANY DEVICE IN LEGEND	30AR	3-POLE	☉	STROBE, WALL MOUNTED, 75CD UNLESS OTHERWISE NOTED CD = CANDELA RATING	LSI	LONG TIME, SHORT TIME, INSTANTANEOUS
S0	SINGLE RECEPTACLE	30AR	3-POLE	☉	STROBE, WALL MOUNTED, 75CD UNLESS OTHERWISE NOTED CD = CANDELA RATING	LSI	LONG TIME, SHORT TIME, INSTANTANEOUS
S0	DUPLEX RECEPTACLE	30AR	3-POLE	☉	STROBE, WALL MOUNTED, 75CD UNLESS OTHERWISE NOTED CD = CANDELA RATING	LSI	LONG TIME, SHORT TIME, INSTANTANEOUS
S0	TWO DUPLEX RECEPTACLES (QUAD) WITH COMMON COVERPLATE	30AR	3-POLE	☉	STROBE, WALL MOUNTED, 75CD UNLESS OTHERWISE NOTED CD = CANDELA RATING	LSI	LONG TIME, SHORT TIME, INSTANTANEOUS
S0	DUPLEX RECEPTACLE MOUNTED ABOVE COUNTER	30AR	3-POLE	☉	STROBE, WALL MOUNTED, 75CD UNLESS OTHERWISE NOTED CD = CANDELA RATING	LSI	LONG TIME, SHORT TIME, INSTANTANEOUS
S0	TWO DUPLEX RECEPTACLES (QUAD) WITH COMMON COVER MOUNTED ABOVE COUNTER	30AR	3-POLE	☉	STROBE, WALL MOUNTED, 75CD UNLESS OTHERWISE NOTED CD = CANDELA RATING	LSI	LONG TIME, SHORT TIME, INSTANTANEOUS
S0	DUPLEX RECEPTACLE: EACH RECEPTACLE ON SEPARATE CIRCUIT (PROVIDE BREAKERS WITH 2-POLE COMMON TRIP HANDLE)	30AR	3-POLE	☉	STROBE, WALL MOUNTED, 75CD UNLESS OTHERWISE NOTED CD = CANDELA RATING	LSI	LONG TIME, SHORT TIME, INSTANTANEOUS
S0	SPLIT-WIRED CONTROLLED DUPLEX RECEPTACLE	30AR	3-POLE	☉	STROBE, WALL MOUNTED, 75CD UNLESS OTHERWISE NOTED CD = CANDELA RATING	LSI	LONG TIME, SHORT TIME, INSTANTANEOUS
S0	GFCI RECEPTACLE: "WP" INDICATES CAST METAL "W-USE" WEATHERPROOF COVER, WEATHER-RESISTANT LISTED	30AR	3-POLE	☉	STROBE, WALL MOUNTED, 75CD UNLESS OTHERWISE NOTED CD = CANDELA RATING	LSI	LONG TIME, SHORT TIME, INSTANTANEOUS
S0	TWO GFCI DUPLEX RECEPTACLES (QUAD) WITH COMMON COVERPLATE	30AR	3-POLE	☉	STROBE, WALL MOUNTED, 75CD UNLESS OTHERWISE NOTED CD = CANDELA RATING	LSI	LONG TIME, SHORT TIME, INSTANTANEOUS
S0	GFCI RECEPTACLE MOUNTED ABOVE COUNTER	30AR	3-POLE	☉	STROBE, WALL MOUNTED, 75CD UNLESS OTHERWISE NOTED CD = CANDELA RATING	LSI	LONG TIME, SHORT TIME, INSTANTANEOUS
S0	DUPLEX RECEPTACLE, CEILING MOUNTED	30AR	3-POLE	☉	STROBE, WALL MOUNTED, 75CD UNLESS OTHERWISE NOTED CD = CANDELA RATING	LSI	LONG TIME, SHORT TIME, INSTANTANEOUS
S0	TWO DUPLEX RECEPTACLES (QUAD) WITH COMMON COVERPLATE, CEILING MOUNTED	30AR	3-POLE	☉	STROBE, WALL MOUNTED, 75CD UNLESS OTHERWISE NOTED CD = CANDELA RATING	LSI	LONG TIME, SHORT TIME, INSTANTANEOUS
S0	PEDESTAL MOUNTED DUPLEX RECEPTACLE	30AR	3-POLE	☉	STROBE, WALL MOUNTED, 75CD UNLESS OTHERWISE NOTED CD = CANDELA RATING	LSI	LONG TIME, SHORT TIME, INSTANTANEOUS
S0	FLOOR BOX WITH DUPLEX RECEPTACLE WITH APPROPRIATE FLANGE	30AR	3-POLE	☉	STROBE, WALL MOUNTED, 75CD UNLESS OTHERWISE NOTED CD = CANDELA RATING	LSI	LONG TIME, SHORT TIME, INSTANTANEOUS
S0	FLOOR BOX, TWO DUPLEX RECEPTACLES WITH APPROPRIATE FLANGE	30AR	3-POLE	☉	STROBE, WALL MOUNTED, 75CD UNLESS OTHERWISE NOTED CD = CANDELA RATING	LSI	LONG TIME, SHORT TIME, INSTANTANEOUS
S0	MULTI-SERVICE FLOOR BOX WITH DUPLEX RECEPTACLE	30AR	3-POLE	☉	STROBE, WALL MOUNTED, 75CD UNLESS OTHERWISE NOTED CD = CANDELA RATING	LSI	LONG TIME, SHORT TIME, INSTANTANEOUS
S0	VOICE/DATA/AV DEVICES (REFER TO TECHNOLOGY DRAWINGS OR OWNER'S VENDOR DRAWINGS FOR LOW VOLTAGE REQUIREMENTS)	30AR	3-POLE	☉	STROBE, WALL MOUNTED, 75CD UNLESS OTHERWISE NOTED CD = CANDELA RATING	LSI	LONG TIME, SHORT TIME, INSTANTANEOUS
S0	MULTI-SERVICE FLOOR BOX WITH TWO DUPLEX RECEPTACLES (QUAD), VOICE/DATA/AV DEVICES (REFER TO TECHNOLOGY DRAWINGS OR OWNER'S VENDOR DRAWINGS FOR LOW VOLTAGE REQUIREMENTS)	30AR	3-POLE	☉	STROBE, WALL MOUNTED, 75CD UNLESS OTHERWISE NOTED CD = CANDELA RATING	LSI	LONG TIME, SHORT TIME, INSTANTANEOUS
S0	MULTI-SERVICE POWER & DATA FLOOR BOX WITH FURNITURE FEED CONNECTION (REFER TO TECHNOLOGY DRAWINGS OR OWNER'S VENDOR DRAWINGS FOR LOW VOLTAGE REQUIREMENTS)	30AR	3-POLE	☉	STROBE, WALL MOUNTED, 75CD UNLESS OTHERWISE NOTED CD = CANDELA RATING	LSI	LONG TIME, SHORT TIME, INSTANTANEOUS
S0	SPECIAL PURPOSE RECEPTACLE, NEMA CONFIGURATION AS NOTED	30AR	3-POLE	☉	STROBE, WALL MOUNTED, 75CD UNLESS OTHERWISE NOTED CD = CANDELA RATING	LSI	LONG TIME, SHORT TIME, INSTANTANEOUS
S0	JUNCTION BOX WALL MOUNTED	30AR	3-POLE	☉	STROBE, WALL MOUNTED, 75CD UNLESS OTHERWISE NOTED CD = CANDELA RATING	LSI	LONG TIME, SHORT TIME, INSTANTANEOUS
S0	JUNCTION BOX MOUNTED IN OR ABOVE CEILING OR IN STRUCTURE	30AR	3-POLE	☉	STROBE, WALL MOUNTED, 75CD UNLESS OTHERWISE NOTED CD = CANDELA RATING	LSI	LONG TIME, SHORT TIME, INSTANTANEOUS
S0	WALL MOUNTED FURNITURE FEED POWER CONNECTION	30AR	3-POLE	☉	STROBE, WALL MOUNTED, 75CD UNLESS OTHERWISE NOTED CD = CANDELA RATING	LSI	LONG TIME, SHORT TIME, INSTANTANEOUS
S0	POWER POLE WITH POWER & DATA FURNITURE FEED POWER CONNECTIONS	30AR	3-POLE	☉	STROBE, WALL MOUNTED, 75CD UNLESS OTHERWISE NOTED CD = CANDELA RATING	LSI	LONG TIME, SHORT TIME, INSTANTANEOUS
S0	POWER POLE WITH POWER & DATA OUTLETS	30AR	3-POLE	☉	STROBE, WALL MOUNTED, 75CD UNLESS OTHERWISE NOTED CD = CANDELA RATING	LSI	LONG TIME, SHORT TIME, INSTANTANEOUS
S0	MULTI-SERVICE POKE-THRU WITH TWO INTEGRAL DUPLEX RECEPTACLES AND VOICE/DATA/AV DEVICES (REFER TO TECHNOLOGY DRAWINGS OR OWNER'S VENDOR DRAWINGS FOR LOW VOLTAGE REQUIREMENTS), OR FURNITURE FEED CONNECTION; REFER TO POKE-THRU DETAILS	30AR	3-POLE	☉	STROBE, WALL MOUNTED, 75CD UNLESS OTHERWISE NOTED CD = CANDELA RATING	LSI	LONG TIME, SHORT TIME, INSTANTANEOUS
S0	MULTI-SERVICE RACEWAY WITH 5-20R RECEPTACLES, 18" O.C. UNLESS OTHERWISE NOTED	30AR	3-POLE	☉	STROBE, WALL MOUNTED, 75CD UNLESS OTHERWISE NOTED CD = CANDELA RATING	LSI	LONG TIME, SHORT TIME, INSTANTANEOUS
S0	CLOCK RECEPTACLE, WALL MOUNTED	30AR	3-POLE	☉	STROBE, WALL MOUNTED, 75CD UNLESS OTHERWISE NOTED CD = CANDELA RATING	LSI	LONG TIME, SHORT TIME, INSTANTANEOUS
S0	GROUND BUS BAR, COPPER	30AR	3-POLE	☉	STROBE, WALL MOUNTED, 75CD UNLESS OTHERWISE NOTED CD = CANDELA RATING	LSI	LONG TIME, SHORT TIME, INSTANTANEOUS
S0	SURGE PROTECTIVE DEVICE	30AR	3-POLE	☉	STROBE, WALL MOUNTED, 75CD UNLESS OTHERWISE NOTED CD = CANDELA RATING	LSI	LONG TIME, SHORT TIME, INSTANTANEOUS
S0	SHUNT-TRIP PUSHBUTTON; SEMI-FLUSH WALL MOUNTED UNLESS OTHERWISE NOTED; NEMA 3R FOR EXTERIOR LOCATIONS	30AR	3-POLE	☉	STROBE, WALL MOUNTED, 75CD UNLESS OTHERWISE NOTED CD = CANDELA RATING	LSI	LONG TIME, SHORT TIME, INSTANTANEOUS
S0	EMERGENCY POWER OFF SHUNT-TRIP PUSHBUTTON, RED MUSHROOM HEAD, CLEAR LEXAN PROTECTIVE COVER	30AR	3-POLE	☉	STROBE, WALL MOUNTED, 75CD UNLESS OTHERWISE NOTED CD = CANDELA RATING	LSI	LONG TIME, SHORT TIME, INSTANTANEOUS
S0	OVERHEAD DOOR PUSHBUTTON CONTROL STATION	30AR	3-POLE	☉	STROBE, WALL MOUNTED, 75CD UNLESS OTHERWISE NOTED CD = CANDELA RATING	LSI	LONG TIME, SHORT TIME, INSTANTANEOUS
S0	PUSHBUTTON STATION	30AR	3-POLE	☉	STROBE, WALL MOUNTED, 75CD UNLESS OTHERWISE NOTED CD = CANDELA RATING	LSI	LONG TIME, SHORT TIME, INSTANTANEOUS
S0	MOTOR CONNECTION	30AR	3-POLE	☉	STROBE, WALL MOUNTED, 75CD UNLESS OTHERWISE NOTED CD = CANDELA RATING	LSI	LONG TIME, SHORT TIME, INSTANTANEOUS
S0	MOTORIZED DAMPER CONNECTION	30AR	3-POLE	☉	STROBE, WALL MOUNTED, 75CD UNLESS OTHERWISE NOTED CD = CANDELA RATING	LSI	LONG TIME, SHORT TIME, INSTANTANEOUS
S0	VARIABLE FREQUENCY DRIVE	30AR	3-POLE	☉	STROBE, WALL MOUNTED, 75CD UNLESS OTHERWISE NOTED CD = CANDELA RATING	LSI	LONG TIME, SHORT TIME, INSTANTANEOUS
S0	DIRECT DIGITAL CONTROL PANEL	30AR	3-POLE	☉	STROBE, WALL MOUNTED, 75CD UNLESS OTHERWISE NOTED CD = CANDELA RATING	LSI	LONG TIME, SHORT TIME, INSTANTANEOUS
S0	BUILDING AUTOMATION SYSTEM CONTROL PANEL	30AR	3-POLE	☉	STROBE, WALL MOUNTED, 75CD UNLESS OTHERWISE NOTED CD = CANDELA RATING	LSI	LONG TIME, SHORT TIME, INSTANTANEOUS
S0	LIGHTING CONTROL PANEL	30AR	3-POLE	☉	STROBE, WALL MOUNTED, 75CD UNLESS OTHERWISE NOTED CD = CANDELA RATING	LSI	LONG TIME, SHORT TIME, INSTANTANEOUS
SYMBOL DESCRIPTION		SYMBOL DESCRIPTION		SYMBOL DESCRIPTION		SYMBOL DESCRIPTION	
☐	EXISTING TO BE REMOVED (HEAVY, DASHED LINE)	☐	EXISTING TO REMAIN (LIGHT, SOLID LINE)	☐	EXISTING TO BE REMOVED (HEAVY, DASHED LINE)	☐	EXISTING TO REMAIN (LIGHT, SOLID LINE)
---	NEW (HEAVY, SOLID LINE)	---	NEW (HEAVY, SOLID LINE)	---	NEW (HEAVY, SOLID LINE)	---	NEW (HEAVY, SOLID LINE)
LIGHTING		LIGHTING		LIGHTING		LIGHTING	
☐	LED STRIP FIXTURE	☐	LED STRIP FIXTURE	☐	LED STRIP FIXTURE	☐	LED STRIP FIXTURE
☐	FIXTURE TYPE	☐	FIXTURE TYPE	☐	FIXTURE TYPE	☐	FIXTURE TYPE
☐	LED FIXTURE, RECESSED, PENDANT OR SURFACE CEILING	☐	LED FIXTURE, RECESSED, PENDANT OR SURFACE CEILING	☐	LED FIXTURE, RECESSED, PENDANT OR SURFACE CEILING	☐	LED FIXTURE, RECESSED, PENDANT OR SURFACE CEILING
☐	LOWER CASE LETTER INDICATES CONTROLLING SWITCH	☐	LOWER CASE LETTER INDICATES CONTROLLING SWITCH	☐	LOWER CASE LETTER INDICATES CONTROLLING SWITCH	☐	LOWER CASE LETTER INDICATES CONTROLLING SWITCH
☐	CIRCUIT NUMBER	☐	CIRCUIT NUMBER	☐	CIRCUIT NUMBER	☐	CIRCUIT NUMBER
☐	LIGHTING CONTROL ZONE NUMBER	☐	LIGHTING CONTROL ZONE NUMBER	☐	LIGHTING CONTROL ZONE NUMBER	☐	LIGHTING CONTROL ZONE NUMBER
☐	LED FIXTURE RECESSED, PENDANT OR SURFACE CEILING	☐	LED FIXTURE RECESSED, PENDANT OR SURFACE CEILING	☐	LED FIXTURE RECESSED, PENDANT OR SURFACE CEILING	☐	LED FIXTURE RECESSED, PENDANT OR SURFACE CEILING
☐	DIAGONAL HALF SHADING INDICATE FIXTURE CONNECTED TO EMERGENCY CIRCUIT OR PROVIDED WITH INTEGRAL EMERGENCY BATTERY PACK; "E" AFTER FIXTURE TYPE TAG INDICATES INTEGRAL BATTERY PACK UNLESS OTHERWISE NOTED ON LIGHT FIXTURE SCHEDULE (TYPICAL FOR ALL LIGHT FIXTURE SYMBOLS)	☐	DIAGONAL HALF SHADING INDICATE FIXTURE CONNECTED TO EMERGENCY CIRCUIT OR PROVIDED WITH INTEGRAL EMERGENCY BATTERY PACK; "E" AFTER FIXTURE TYPE TAG INDICATES INTEGRAL BATTERY PACK UNLESS OTHERWISE NOTED ON LIGHT FIXTURE SCHEDULE (TYPICAL FOR ALL LIGHT FIXTURE SYMBOLS)	☐	DIAGONAL HALF SHADING INDICATE FIXTURE CONNECTED TO EMERGENCY CIRCUIT OR PROVIDED WITH INTEGRAL EMERGENCY BATTERY PACK; "E" AFTER FIXTURE TYPE TAG INDICATES INTEGRAL BATTERY PACK UNLESS OTHERWISE NOTED ON LIGHT FIXTURE SCHEDULE (TYPICAL FOR ALL LIGHT FIXTURE SYMBOLS)	☐	DIAGONAL HALF SHADING INDICATE FIXTURE CONNECTED TO EMERGENCY CIRCUIT OR PROVIDED WITH INTEGRAL EMERGENCY BATTERY PACK; "E" AFTER FIXTURE TYPE TAG INDICATES INTEGRAL BATTERY PACK UNLESS OTHERWISE NOTED ON LIGHT FIXTURE SCHEDULE (TYPICAL FOR ALL LIGHT FIXTURE SYMBOLS)
☐	LED FIXTURE, WALL MOUNTED	☐	LED FIXTURE, WALL MOUNTED	☐	LED FIXTURE, WALL MOUNTED	☐	LED FIXTURE, WALL MOUNTED
☐	LED RECESSED, PENDANT OR SURFACE CEILING	☐	LED RECESSED, PENDANT OR SURFACE CEILING	☐	LED RECESSED, PENDANT OR SURFACE CEILING	☐	LED RECESSED, PENDANT OR SURFACE CEILING
☐	LED, WALL MOUNTED	☐	LED, WALL MOUNTED	☐	LED, WALL MOUNTED	☐	LED, WALL MOUNTED
☐	LED - CEILING WALL WASHER, ACCENT LIGHT, LANDSCAPING TREE ACCENT LIGHT, FACADE LIGHT	☐	LED - CEILING WALL WASHER, ACCENT LIGHT, LANDSCAPING TREE ACCENT LIGHT, FACADE LIGHT	☐	LED - CEILING WALL WASHER, ACCENT LIGHT, LANDSCAPING TREE ACCENT LIGHT, FACADE LIGHT	☐	LED - CEILING WALL WASHER, ACCENT LIGHT, LANDSCAPING TREE ACCENT LIGHT, FACADE LIGHT
☐	TRACK WITH TRACK LIGHT FIXTURE (TRIANGLES INDICATE QUANTITY OF TRACK HEADS)	☐	TRACK WITH TRACK LIGHT FIXTURE (TRIANGLES INDICATE QUANTITY OF TRACK HEADS)	☐	TRACK WITH TRACK LIGHT FIXTURE (TRIANGLES INDICATE QUANTITY OF TRACK HEADS)	☐	TRACK WITH TRACK LIGHT FIXTURE (TRIANGLES INDICATE QUANTITY OF TRACK HEADS)
☐	EMERGENCY TWIN-HEAD LIGHT WITH INTEGRAL BATTERY PACK, WALL MOUNTED	☐	EMERGENCY TWIN-HEAD LIGHT WITH INTEGRAL BATTERY PACK, WALL MOUNTED	☐	EMERGENCY TWIN-HEAD LIGHT WITH INTEGRAL BATTERY PACK, WALL MOUNTED	☐	EMERGENCY TWIN-HEAD LIGHT WITH INTEGRAL BATTERY PACK, WALL MOUNTED
☐	LINEAR LED, RECESSED, PENDANT OR SURFACE CEILING	☐	LINEAR LED, RECESSED, PENDANT OR SURFACE CEILING	☐	LINEAR LED, RECESSED, PENDANT OR SURFACE CEILING	☐	LINEAR LED, RECESSED, PENDANT OR SURFACE CEILING
☐	EXTERIOR POLE-MOUNTED AREA LIGHT FIXTURE, ARMS AS INDICATED ON DRAWINGS	☐	EXTERIOR POLE-MOUNTED AREA LIGHT FIXTURE, ARMS AS INDICATED ON DRAWINGS	☐	EXTERIOR POLE-MOUNTED AREA LIGHT FIXTURE, ARMS AS INDICATED ON DRAWINGS	☐	EXTERIOR POLE-MOUNTED AREA LIGHT FIXTURE, ARMS AS INDICATED ON DRAWINGS
☐	EXTERIOR PEDESTAL SIDEWALK BOLLARD OR POST-TOP LIGHT FIXTURE	☐	EXTERIOR PEDESTAL SIDEWALK BOLLARD OR POST-TOP LIGHT FIXTURE	☐	EXTERIOR PEDESTAL SIDEWALK BOLLARD OR POST-TOP LIGHT FIXTURE	☐	EXTERIOR PEDESTAL SIDEWALK BOLLARD OR POST-TOP LIGHT FIXTURE
☐	EXIT LIGHT, LED, CEILING OR PENDANT MOUNTED; DIRECTIONAL ARROWS AS INDICATED; SHADED QUADRANT INDICATES FACE(S) OF FIXTURE	☐	EXIT LIGHT, LED, CEILING OR PENDANT MOUNTED; DIRECTIONAL ARROWS AS INDICATED; SHADED QUADRANT INDICATES FACE(S) OF FIXTURE	☐	EXIT LIGHT, LED, CEILING OR PENDANT MOUNTED; DIRECTIONAL ARROWS AS INDICATED; SHADED QUADRANT INDICATES FACE(S) OF FIXTURE	☐	EXIT LIGHT, LED, CEILING OR PENDANT MOUNTED; DIRECTIONAL ARROWS AS INDICATED; SHADED QUADRANT INDICATES FACE(S) OF FIXTURE
☐	EXIT LIGHT, LED, WALL MOUNTED	☐	EXIT LIGHT, LED, WALL MOUNTED	☐	EXIT LIGHT, LED, WALL MOUNTED	☐	EXIT LIGHT, LED, WALL MOUNTED
LIGHTING PROTECTION SYSTEM		LIGHTING PROTECTION SYSTEM		LIGHTING PROTECTION SYSTEM		LIGHTING PROTECTION SYSTEM	
☐	CLASS I MAIN CONDUCTOR CABLE	☐	CLASS I MAIN CONDUCTOR CABLE	☐	CLASS I MAIN CONDUCTOR CABLE	☐	CLASS I MAIN CONDUCTOR CABLE
☐	CLASS II MAIN CONDUCTOR CABLE	☐	CLASS II MAIN CONDUCTOR CABLE	☐	CLASS II MAIN CONDUCTOR CABLE	☐	CLASS II MAIN CONDUCTOR CABLE
☐	TEE SPLICE	☐	TEE SPLICE	☐	TEE SPLICE	☐	TEE SPLICE
☐	FOUR-WAY SPLICE	☐	FOUR-WAY SPLICE	☐	FOUR-WAY SPLICE	☐	FOUR-WAY



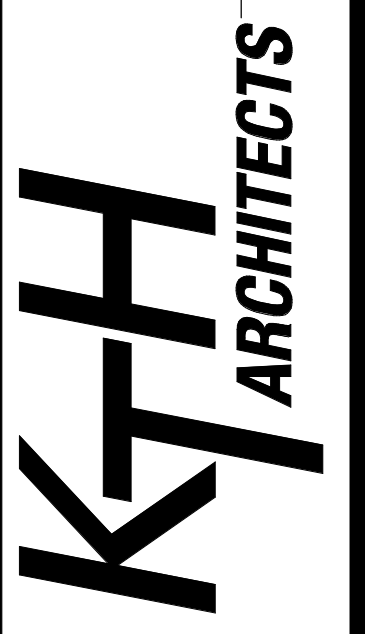
1 ELECTRICAL SITE PLAN
1" = 20'-0"

- KEYED NOTES:
- CONTROLLED VIA PHOTOCELL WITH ASTRONOMICAL TIME CLOCK OVERRIDE.
 - REFER TO DETAIL 1EE2 FOR POLE BASE DETAIL.
 - REFER TO DETAIL 2EE2 FOR POLE BASE DETAIL.
 - (3) 4" C TO NEW PAD MOUNTED UTILITY TRANSFORMER. ELECTRICAL CONTRACTOR SHALL COORDINATE EXACT LOCATION OF TRANSFORMER WITH SECO ENERGY BASED ON SERVICE REQUIREMENTS.
 - (1) 1" C FROM TRANSFER SWITCH IN ELECTRICAL ROOM TO GENERATOR FOR CONTROL WIRING.
 - PROPOSED LOCATION OF PAD MOUNTED UTILITY TRANSFORMER. ELECTRICAL CONTRACTOR SHALL COORDINATE EXACT LOCATION OF TRANSFORMER WITH SECO ENERGY. CONTRACTOR SHALL PROVIDE PAD BASED ON SERVICE REQUIREMENTS.
 - UNDERGROUND PRIMARY ELECTRICAL SERVICE CONDUITS. ELECTRICAL CONTRACTOR SHALL COORDINATE EXACT LOCATION AND ROUTING OF ELECTRICAL SERVICE PRIMARY CONDUIT AND FEEDERS WITH SECO ENERGY. CONTRACTOR SHALL PROVIDE PRIMARY CONDUITS AND FEEDERS AS REQUIRED BY SERVICE REQUIREMENTS.
 - PROPOSED LOCATION OF GENERATOR DOCKING STATION.
 - PROPOSED LOCATION OF ELECTRIC UTILITY METER.

NO.	DESCRIPTION	DATE

STEPHEN B. COTTON, P.E.
 PROFESSIONAL ENGINEER
 No. 60048
 STATE OF FLORIDA
 11/8/2021 1:35:37 PM

John P. Adams, AIA
 Jerome Bankovich, Jr., AIA, LEED
 Ethan J. Hine, AIA
 Jennifer Zaffuto, AIA, LEED, NCARB
 1741 KOWANIS TRAIL • DUBOIS PA • 814.371.8801 • KTHarch.com
 880 NORTH HIGHLAND AVE. • ORLANDO, FL • 407.203.6707 • F 407.493.0550



20073A

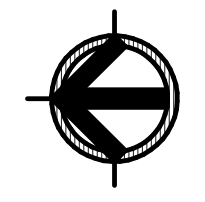
LAKE COUNTY
 FIRE STATION NO. 71
 ELECTRICAL SITE PLAN

NOVEMBER 10, 2021

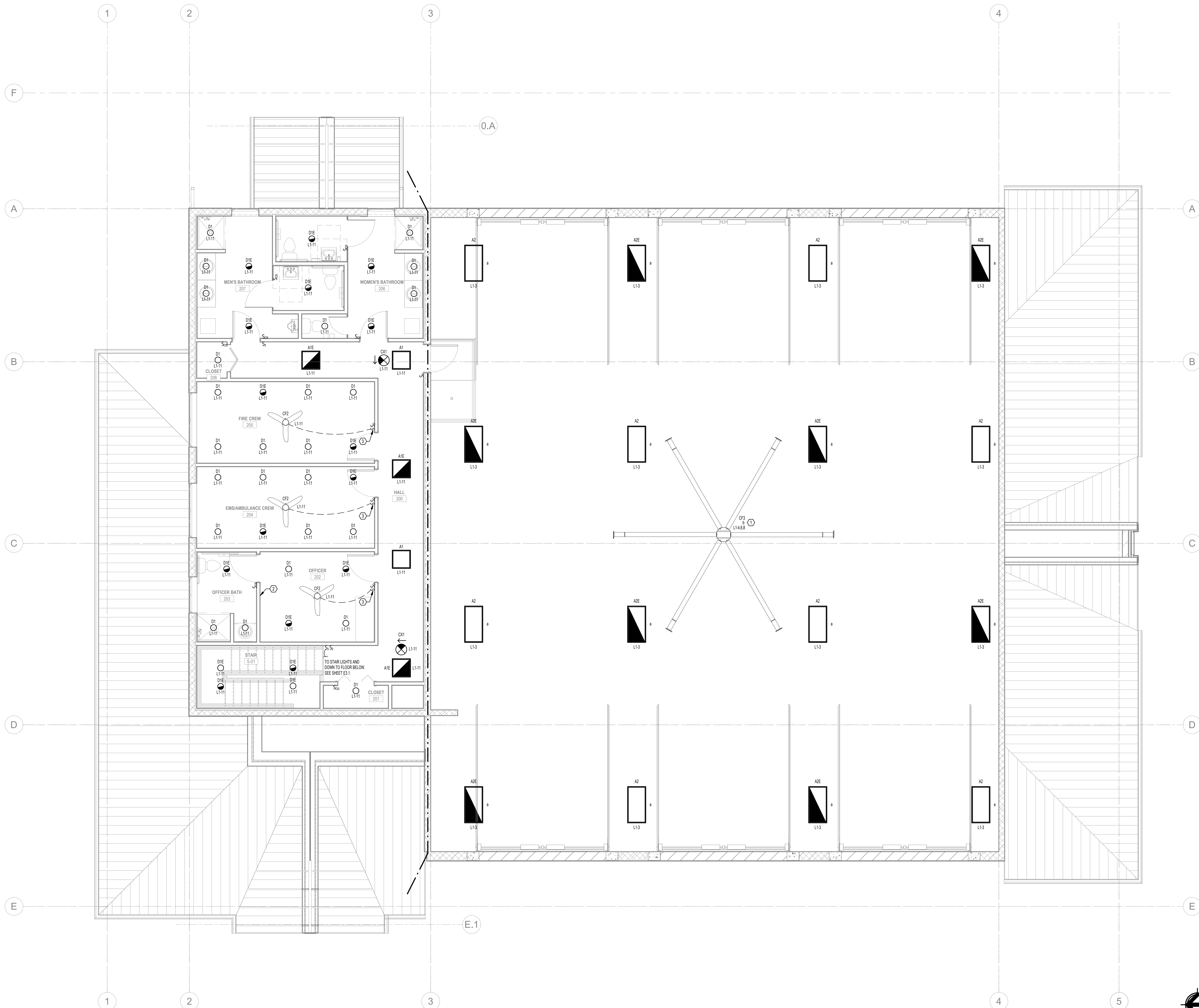
33661 CR 473, LEESBURG, FL 34788

E0.3

100% CD Submittal - Bid Set



TLC ENGINEERING SOLUTIONS
 7370 Cabot Court, Suite 103
 Melbourne, FL 32940
 P 321.636.0274
 COA 15
 www.tlc-engineers.com
 TLC No.: 521157
 THINK. LISTEN. CREATE.



- KEYED NOTES:**
1. PROVIDE RELAY FOR CONNECTION OF FAN TO FIRE ALARM CONTROL PANEL.
 2. PROVIDE WALL-MOUNTED LIGHTING CONTROLLER IN OFFICER'S ROOM WITH DRY CONTACT FOR CONNECTION TO FIRE FIGHTER ALERT SYSTEM. UPON RECEIVING SIGNAL FROM FIRE FIGHTER ALERT SYSTEM, CONTROLLER SHALL RAISE LIGHT LEVELS IN SLEEPING ROOMS GRADUALLY. BASIS OF DESIGN: ACQUITY BRANDS FRESKO FOS-TTSNDWH. REFER TO DETAILS 7E1.3, 7E2.4, 7E2.5 FOR WIRING AND CONNECTION DIAGRAMS. CONFIRM DEVICE LOCATION WITH OWNER PRIOR TO ROUGH-IN.
 3. FAN SPEED CONTROL SWITCH: MONTE CARLO ESSWCA.

1 SECOND FLOOR - LIGHTING
1/4" = 1'-0"

TLC ENGINEERING
7370 Cabot Court, Suite 103
Melbourne, FL 32940
P 321.636.0274
www.tlc-engineers.com
TLC No: 521157
©Copyright 2021
COA 15

100% CD Submittal - Bid Set

LAKE COUNTY
FIRE STATION NO. 71
ELECTRICAL LEVEL 2 LIGHTING PLAN

NOVEMBER 10, 2021

E3.2

KTH ARCHITECTS
1741 KOWANIS TRAIL • DUBOIS, PA • 814.371.1941 • F 814.371.8801 • KTHarch.com
880 NORTH HIGHLAND AVE. • ORLANDO, FL • 407.203.6707 • F 407.409.0650

John P. Adams, AIA
Jerome Bankovich, Jr., AIA, LEED
Ethan J. Hine, AIA
Jennifer Zaffuto, AIA, LEED, NCARB

STEPHEN B. COTTON, P.E.
No. 60048
STATE OF FLORIDA
Professional Engineer
11/8/2021 1:35:55 PM

DATE
DESCRIPTION
NO.

LIGHTING FIXTURE SCHEDULE

TYPE	DESCRIPTION	MANUFACTURER / MODEL	VOLTAGE	LAMP SOURCE	WATTAGE	COMMENTS
AT	2'x2' FLAT PANEL, RECESSED MOUNT, 300LM, 3500K, ALUMINUM HOUSING, DAMP LOCATION LISTED.	LITHONIA CPX 2X2 300LM 80CRI 35K SWL MNV10 2T MVOLT COLUMBIA / CB724-L3CS5 METALUX / ZC2C2353SC	120 V	LED	29.00 W	
A1E	2'x2' FLAT PANEL, RECESSED MOUNT, 300LM, 3500K, ALUMINUM HOUSING, DAMP LOCATION LISTED.	LITHONIA CPX 2X2 300LM 80CRI 35K SWL MNV10 2T MVOLT E10WCP COLUMBIA / CB724-L3CS5 METALUX / ZC2C2353SC EL14W	120 V	LED	29.00 W	
A2	2'x4' FLAT PANEL, RECESSED MOUNT, 400LM, 3500K, ALUMINUM HOUSING, DAMP LOCATION LISTED.	LITHONIA CPX 2X4 400LM 80CRI 35K SWL MNV10 2T MVOLT COLUMBIA / CB724-L3CS5 METALUX / ZC2C2353SC	120 V	LED	37.00 W	
A2E	2'x4' FLAT PANEL, RECESSED MOUNT, 400LM, 3500K, ALUMINUM HOUSING, DAMP LOCATION LISTED.	LITHONIA CPX 2X4 400LM 80CRI 35K SWL MNV10 2T MVOLT E10WCP COLUMBIA / CB724-L3CS5 METALUX / ZC2C2353SC EL14W	120 V	LED	37.00 W	
C1	EXTERIOR WALL PACK, SURFACE MOUNTED, ADJUSTABLE LUMEN OUTPUT, 4000K, ALUMINUM HOUSING, BRONZE FINISH, WET LOCATION LISTED.	LITHONIA TWR1 LED 4.0 40K MVOLT PE DOREDD HUBBELL / WGH-LS-4K COOPER / APCHTR	120 V	LED	29.00 W	
CF1	"MAVERICK COASTAL 8" OUTDOOR CEILING FAN, 6" DIAMETER, 3 BLADE STAINLESS STEEL, MIDNIGHT BLACK HOUSING, WET LOCATION LISTED.	MONTÉ CARLO / 316SR3086BMBK	120 V	NA	27.00 W	REMOTE INCLUDED.
CF2	"MAVERICK 52" INDOOR CEILING FAN, 52" DIAMETER, 3 BLADE, MATTE WHITE HOUSING, DAMP LOCATION LISTED.	MONTÉ CARLO / 316VRS2R2W	120 V	NA	27.00 W	REMOTE INCLUDED.
CF3	"BASIC 2" BIG ASS FAN, 24" DIAMETER, 6 BLADE, ALUMINUM HOUSING.	BIG ASS FANS / BE-24-5500	208 V	NA	150.00 W	
CK1	EMERGENCY EXIT SIGN & EGRESS LIGHT COMBO, CEILING MOUNTED, THERMOPLASTIC HOUSING, DAMP LOCATION LISTED.	LITHONIA LHQM LED R COMPASS / CCR COOPER / APCHTR	120 V	LED	5.00 W	
D1	"F" DOWNLIGHT, RECESSED MOUNT, 150LM, 3500K, STEEL HOUSING, WET LOCATION LISTED.	LITHONIA L106 3515 L06AR LSS MVOLT Q270 MAXILUM / H46-LED-150L DM10 MVOLT W0-35K-80-H46-651-SH2-SH2 COOPER / PRRS12010-PRM1M1M2SR3M5	120 V	LED	18.00 W	
D1E	"F" DOWNLIGHT, RECESSED MOUNT, 150LM, 3500K, STEEL HOUSING, WET LOCATION LISTED.	LITHONIA L106 3515 L06AR LSS MVOLT Q270 EL MAXILUM / H46-LED-150L DM10 MVOLT W0-35K-80-H46-651-SH2-SH2 COOPER / PRRS12010-PRM1M1M2SR3M5	120 V	LED	18.00 W	
SLA	SITE LIGHT, POLE MOUNTED, 807LM, 4000K, ALUMINUM HOUSING, DARK BRONZE FINISH, WET LOCATION LISTED.	LITHONIA RSX1 LED PZ 40K 84 MVOLT 8PA NL1A82 PRIN D08D0 HUBBELL / RAR1-16L-4K-40U-UM-A, U-OBT ANS0PWF COOPER / PRR19A16-140-U-191-AC05P25XA	120 V	LED	72.00 W	PROVIDE DIRECT BURIED ROUND TAPERED ALUMINUM POLE, 4" PDC RT42508D, MOUNT AT 25'-0".
SLF	ACCENT LIGHT, KNUCKLE MOUNT, 300LM, 4000K, ALUMINUM HOUSING, BRONZE FINISH, WET LOCATION LISTED.	HYDREL / PINE PLY 30CR 40K MVOLT 3.0025 FL C NM AR1B C3 BR5 HEV LITE / HL45-82L-45K-40K-FL-120-277-G-30 VSTA PRO / 1059-24F-40-DM-010-HS	120 V	LED	33.00 W	
WT1	EMERGENCY EXIT SIGN & EGRESS LIGHT COMBO, WALL MOUNTED, THERMOPLASTIC HOUSING, DAMP LOCATION LISTED.	LITHONIA LHQM LED R HUBBELL / CCR COOPER / APCHTR	120 V	LED	5.00 W	

- NOTES:**
- ALL LED FIXTURES SHALL BE MINIMUM 50,000 HOURS L70, CRI 80+ ALL INTERIOR LIGHTS SHALL BE 3500K UON. ALL EXTERIOR LIGHTS SHALL BE 4000K UON.
 - PROVIDE APPROVED FIRE-RATED ENCLOSURES FOR ALL LIGHT FIXTURES LOCATED IN FIRE-RATED CEILING.
 - IF THERE IS A DISCREPANCY BETWEEN THE FIXTURE DESCRIPTION, THE LIGHTING GENERAL NOTES, THE LIGHTING SPECIFICATIONS, AND THE CATALOG NUMBER LISTED, THE FIXTURE DESCRIPTION SHALL TAKE PRECEDENCE.
 - THE 1ST MANUFACTURER LISTED WITH CORRESPONDING CATALOG NUMBER SHALL BE CONSIDERED THE BASIS OF DESIGN SELECTION. OTHER MANUFACTURERS SHALL BE APPROVED EQUAL ONLY IF THE LIGHTING FIXTURE MEETS OR EXCEEDS THE BASIS OF DESIGN SELECTION IN TYPE AND QUALITY OF CONSTRUCTION, LOWER FINISHES, HOUSING FINISHES, PHOTOMETRICS, SELECTED OPTIONS AND ACCESSORIES. APPROVED EQUAL MANUFACTURERS MUST ALSO MATCH OVERALL APPEARANCE AND DIMENSIONS OF BASIS OF DESIGN SELECTION.
 - LIGHT FIXTURES LAY-IN CEILING GRIDS SHALL BE SUPPORTED AS FOLLOWS: LIGHT FIXTURES WEIGHING LESS THAN 10 POUNDS SHALL HAVE (1) 12 GAUGE WIRE CONNECTED FROM THE LIGHT FIXTURE TO THE STRUCTURE ABOVE. LIGHT FIXTURES WEIGHING 10 POUNDS OR MORE SHALL HAVE (2) 12 GAUGE WIRES ATTACHED AT OPPOSITE CORNERS OF THE LIGHT FIXTURE TO THE STRUCTURE ABOVE.
 - SEE INTERIOR AND EXTERIOR LIGHTING SPECIFICATION SECTIONS FOR ADDITIONAL INFORMATION AND REQUIREMENTS FOR LIGHT FIXTURES LISTED IN SCHEDULE.
 - EQUAL FIXTURES THAT FOLLOW THE BASIS OF DESIGN CAN BE PROVIDED BY WESTERN FLORIDA LIGHTING, LIGHTING PARTNERS, AND SESCO LIGHTING.
 - SEE PLANS AND DETAILS FOR INTERIOR AND EXTERIOR LIGHTING CONTROLS. LARGER AND COMPLEX ROOMS SHALL BE CONTROLLED BY LIGHTING CONTROL PANEL AND SYSTEM, WHILE SMALLER ROOMS AND CORRIDORS SHALL HAVE STAND ALONE LIGHTING CONTROLS PER PLANS.
 - SITE LIGHT FIXTURES SHALL BE MOUNTED ON DIRECT BURIED 25'-0" ROUND TAPERED CONCRETE POLES. SEE SITE PLAN AND DETAILS FOR CONCRETE POLES THAT REQUIRE ADDITIONAL CONCRETE BUMPER PROTECTION. POLES SHALL BE RATED FOR 132 MPH WIND.

Panel: MDP

Location: ELECTRICAL 103 Mounting: SURFACE Enclosure: TYPE 1 Dist. / Phase / Wires: 120/208 Wye / 3 / 4 K.A.I.C. Rating: 22k BUS Rating: 600 A Supply From: MDP Max Height Busing: Yes Mains Type: MCB MCB Rating: 600 A

KN	CKT	Circuit Description	Trips(A)	P	A (KVA)	B (KVA)	C (KVA)	P	Trips(A)	Circuit Description	CKT	KN
3	PANEL L1		225	3	11.986	27.148			3	300	PANEL L2	4
4	Space						14.651					6
5	Space		0.000	0.000								8
9	Space				0.000	0.000						10
11	Space		0.000	0.000								12
13	Space		0.000	0.000								14
15	Space				0.000	0.000						16
17	Space				0.000	0.000						18
Connected Phase Load (KVA)					39.132	41.131	39.853					
Connected Phase Amps (A)					326.097	343.854	332.838					

Load Classification

Equipment	Connected Load	Demand Factor	Demand Load
EQUIPMENT	8700.00 W	100.00%	8700.00 W
HEATING	2000.00 W	100.00%	2000.00 W
KITCHEN EQUIPMENT	2400.00 W	100.00%	2400.00 W
LIGHTING	4083.00 W	100.00%	4083.00 W
Motor	4875.00 W	104.43%	5091.00 W
Other	1581.00 W	100.00%	1581.00 W
RECEPTACLE	3030.00 W	66.47%	2017.50 W
HVAC	4796.00 W	108.88%	5226.00 W
EQUIP.	50.00 W	100.00%	50.00 W

Panel Totals
Total Connected Load (KVA): 120.695
Total Demand Load (KVA): 114.386
Total Demand Current (A): 318

Panel Keynotes (KN):

Panel: L1

Location: ELECTRICAL 103 Mounting: SURFACE Enclosure: TYPE 1 Dist. / Phase / Wires: 120/208 Wye / 3 / 4 K.A.I.C. Rating: 10k BUS Rating: 400 A Supply From: MDP Max Height Busing: Yes Mains Type: MLO MCB Rating: 225 A

KN	CKT	Circuit Description	Trips(A)	P	A (KVA)	B (KVA)	C (KVA)	P	Trips(A)	Circuit Description	CKT	KN	
2	1	SITE LIGHTING	20	1	0.216	0.486			1	20	SITE LIGHTING	2	
3	1	LIGHTING - VEHICLE BAY	20	1		0.997	0.920		1	20	LIGHTING - VEHICLE BAY	4	
5	1	LIGHTING - GEAR/GEAR EXTRACT CLEANING, GYM	20	1			0.353	0.900	3	15	CEILING FAN - VEHICLE BAY	6	
2	7	LIGHTING - PATIO WEST EXTERIOR	20	1	0.287	0.500						8	
9	1	LIGHTING - OFFICE, MEETING, UTIL, KITCH, DAY...	20	1		0.848	0.458	0.911	0.900	1	20	LIGHTING - EXTERIOR	10
11	1	LIGHTING - 2ND FLOOR INTERIOR	20	1								12	
13	1	RECEPTACLES - FOYERS, ELEC. ENTRY TOILET	20	1	0.720	0.720						14	
1	1	RECEPTACLES - WASHFR	20	1		1.200	2.500					16	
17	1	REFRIGERATOR	20	1			1.000	2.500	2	30	RECEPTACLE - DRIVER	18	
19	1	REFRIGERATOR	20	1	1.000	1.000						20	
21	1	KITCHEN DISPOSAL	20	1		0.850	0.720					22	
23	1	RECEPTACLES - KITCHEN COUNTER	20	1			0.540	1.200	1	15	KITCHEN HOOD #H1	24	
25	1	ELECTRIC RANGE	60	3	5.667	1.200						26	
27	1	RECEPTACLES - BAR & WORK AREA	20	1		5.667	0.900					28	
29	1	RECEPTACLE - DAY ROOM 108	20	1			0.180	1.1				30	
31	1	RECEPTACLE - TV DAY ROOM	20	1	0.180	0.000						32	
33	1	RECEPTACLES - CONFERENCE/TRAINING	20	1		0.740	0.000					34	
35	1	RECEPTACLES - DINING & DAY ROOM	20	1			0.900	0.000	1	20	Space	36	
37	Space		20	1	0.000	0.000						38	
39	Space		20	1		0.000	0.000					40	
41	Space		20	1		0.000	0.000					42	
Connected Phase Load (KVA)					11.986	14.978	14.651						
Connected Phase Amps (A)					99.881	128.231	125.506						

Load Classification

Equipment	Connected Load	Demand Factor	Demand Load
KITCHEN EQUIPMENT	2400.00 W	100.00%	2400.00 W
LIGHTING	4083.00 W	100.00%	4083.00 W
Other	1581.00 W	100.00%	1581.00 W
RECEPTACLE	1950.00 W	80.21%	1520.50 W
HVAC	1700.00 W	126.00%	2120.00 W

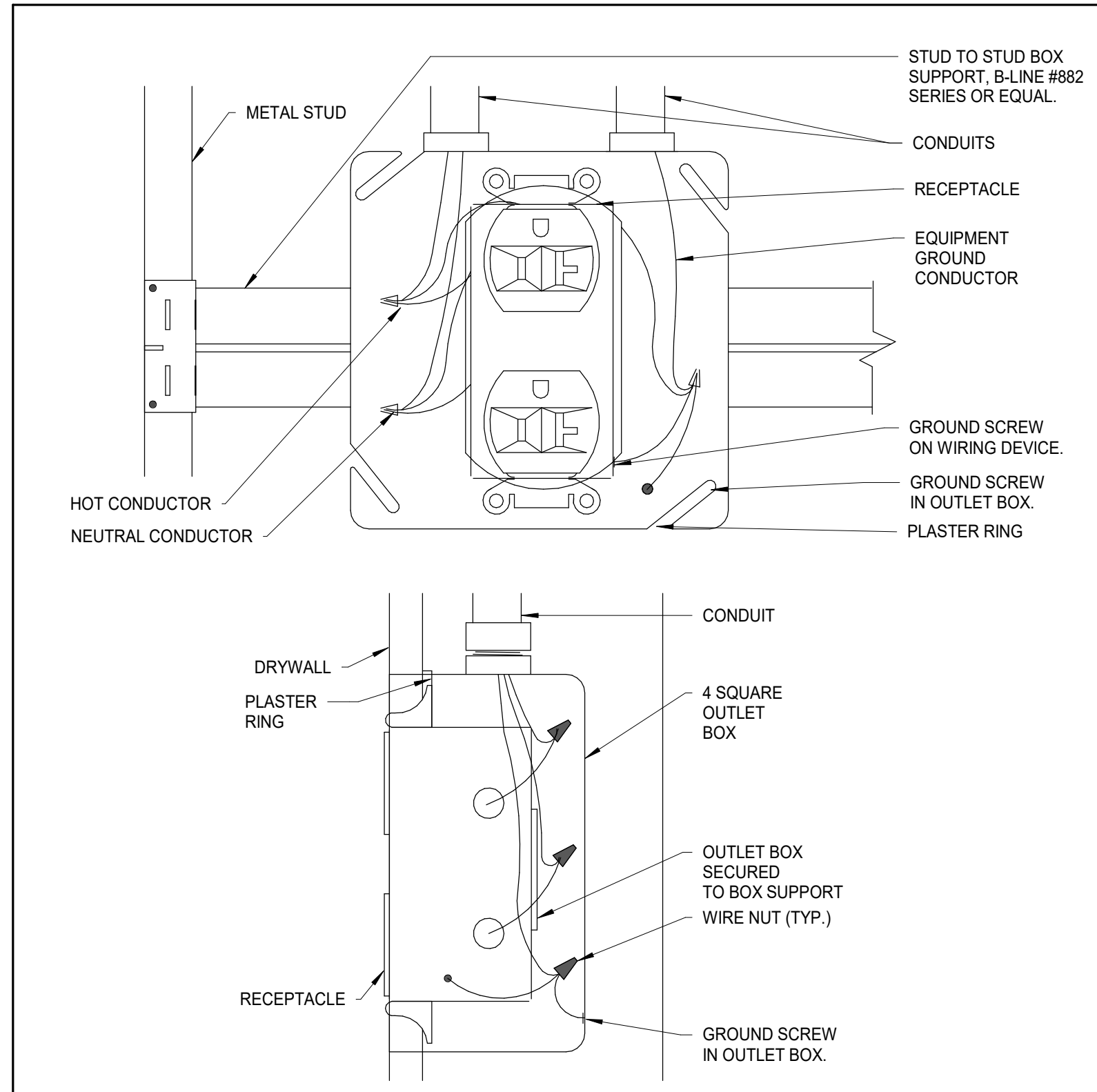
Panel Totals
Total Connected Load (KVA): 41.614
Total Demand Load (KVA): 42.589
Total Demand Current (A): 118

Panel Keynotes (KN):
1. PROVIDE GFCI BREAKER
2. CONNECT CIRCUIT THROUGH LIGHTING CONTACTOR

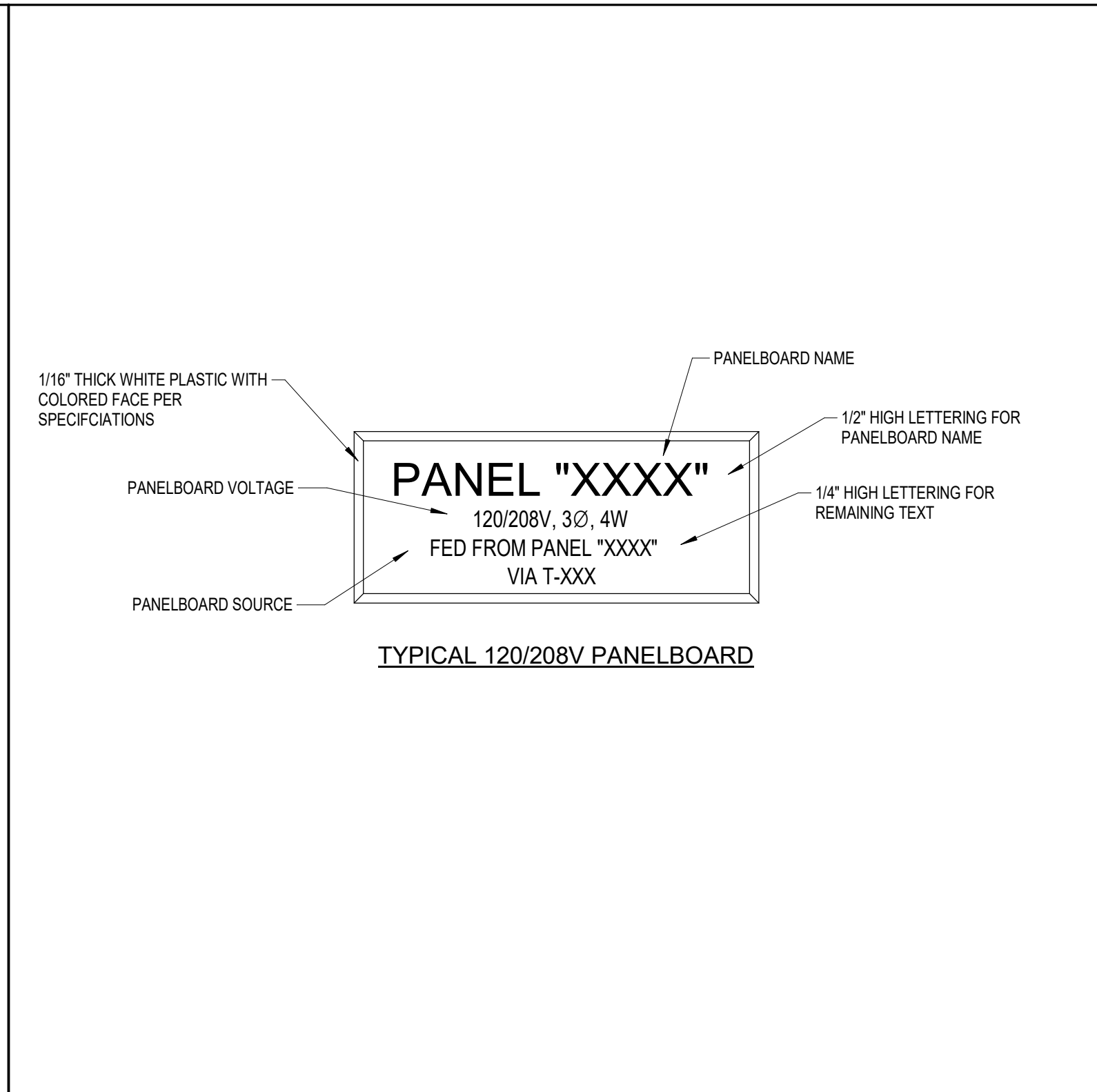
Panel: L2

Location: ELECTRICAL 103 Mounting: SURFACE Enclosure: TYPE 1 Dist. / Phase / Wires: 120/208 Wye / 3 / 4 K.A.I.C. Rating: 10k BUS Rating: 400 A Supply From: MDP Max Height Busing: Yes Mains Type: MLO MCB Rating: 300 A

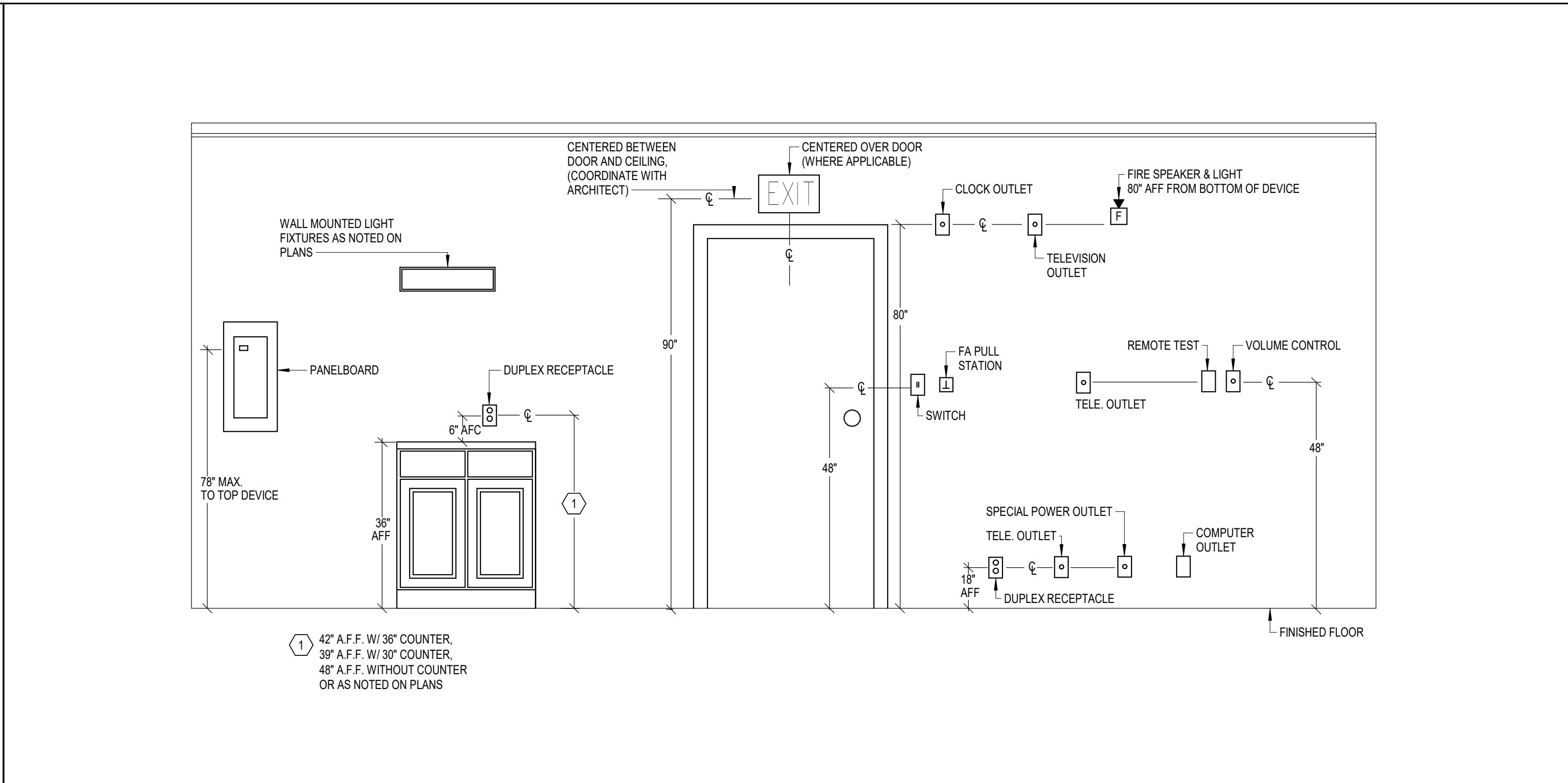
KN	CKT	Circuit Description	Trips(A)	P	A (KVA)	B (KVA)	C (KVA)	P	Trips(A)	Circuit Description	CKT	KN	
1	1	RECEPTACLES - CONFERENCE/TRAINING, TOILET	20	1	0.720	0.900				20	RECEPTACLES - EXTERIOR	2	
3	1	RECEPTACLES - EXTENSION	20	1		0.900	0.720					4	
5	1	RECEPTACLES - GARAGE	20	1		1.200	0.800					6	
7	1	DOOR OPENER	20	1	0.800	0.800						8	
9	1	DOOR OPENER	20	1		0.800	0.800					10	
11	1	DOOR OPENER	20	1		0.800	0.900					12	
13	1	RECEPTACLES - CLEANING, GEAR/GEAR...	20	1	1.080	1.200						14	
15	1	CP-1	20	1		0.200	1.200					16	
17	1	GENERATOR BATTERY	20	1		0.500	1.200					18	
19	1	RECEPTACLES - MEN'S & WOMEN'S R/R 2ND FLOOR	20	1	1.080	0.720						20	
21	1	RECEPTACLES - OFFICE/QUARTERS & BATH	20	1		1.080	1.260					22	
23	1	RECEPTACLES - FIRE CREW	20	1		1.260	0.360					24	
25	1	Space	20	1	2.000	3.500						26	
27	3	EWH-1	25	3		2.000	3.500					28	
29	1	Space	20	1								30	
31	1	AHJ-1	80	2	4.750	3.500						32	
33	1	EF-9	20	1		4.750	3.000					34	
35	1	Space	20	1		1.120						36	
37	1	Space	20	1		1.120						38	
41	1	CU-3CS-1, CS-2, CS-3	20	2	0.150	0.864		0.150	1.656	1	20	EF-10	44
47	1	CU-1	50	2		3.713						46	
49	1	GENERATOR ANNUNCIATOR PANEL	20	1	0.050	3.037						50	
51	1	FIRE ALARM ANNUNCIATOR	20	1		0.050	0.200					52	
53	1	FAC-1	20	1		0.050	0.300					54	
55	1	FUTURE CEILING FAN - GYM	20	1	0.500	0.375						56	
57	1	FUTURE CEILING FAN - GYM	20	1		0.500	0.360					58	
59	Space		20	1			0.000	0.000	1	20	Space	60	
61	Space		20	1	0.000	0.000						62	
63	Space		20	1		0.000	0.000					64	
65	Space		20	1			0.000	0.000	1	20	Space	66	
67	Space		20	1	0.000	0.000						68	
69	Space		20	1		0.000	0.000					70	
71	Space		20	1			0.000	0.000				72	
73	Space		20	1	0.000	0.000						74	
75	Space		20	1		0.000	0.000					76	
77	Space		20	1			0.000	0.000				78	
79	Space		20	1	0.000	0.000						80	
81	Space		20	1		0.000	0.000					82	
83	Space		20	1			0.000	0.000				84	
Connected Phase Load (KVA)					27.148	26.153	25.162						
Connected Phase Amps (A)													



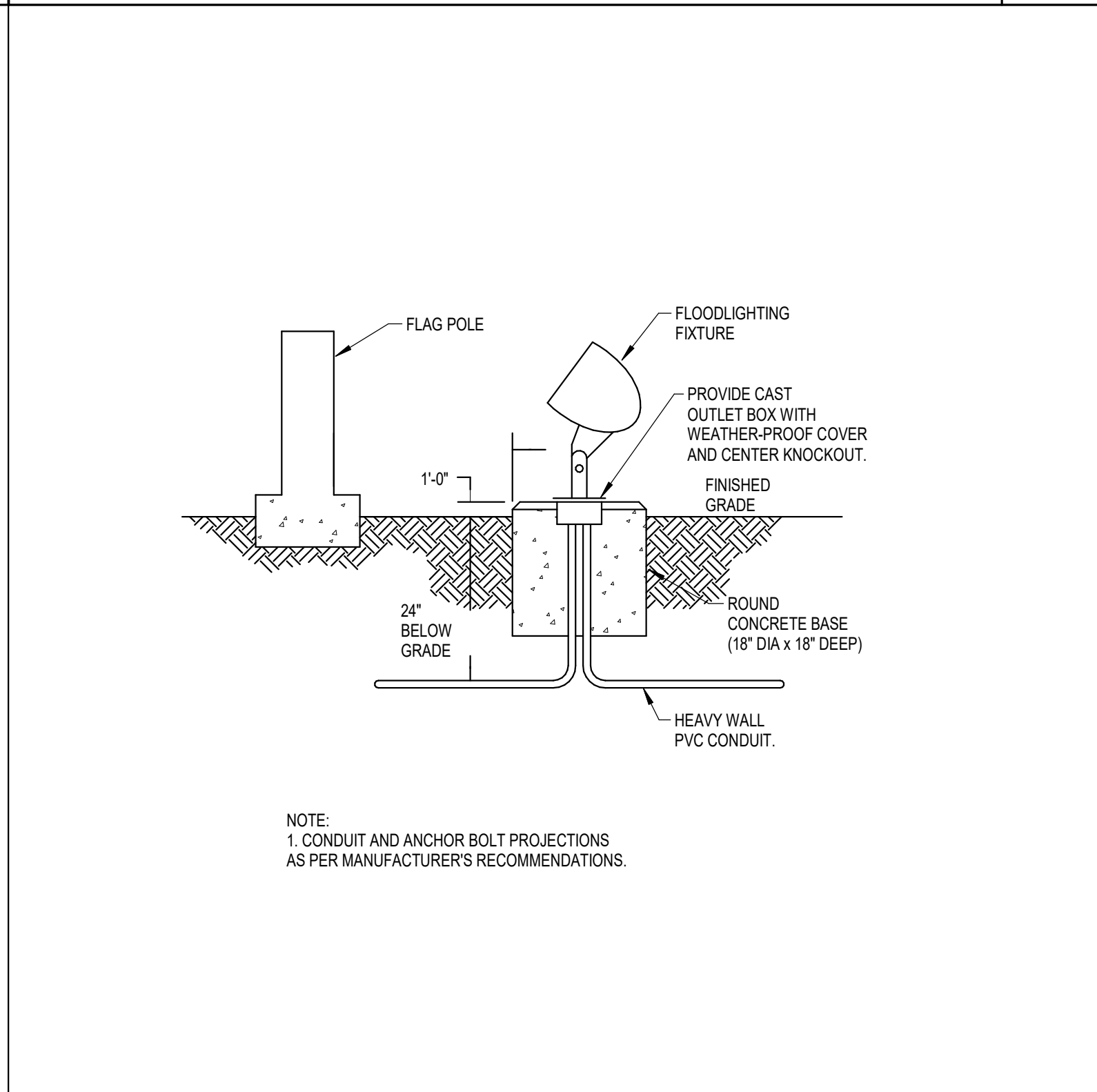
TYPICAL RECEPTACLE MOUNTING DETAIL
No Scale



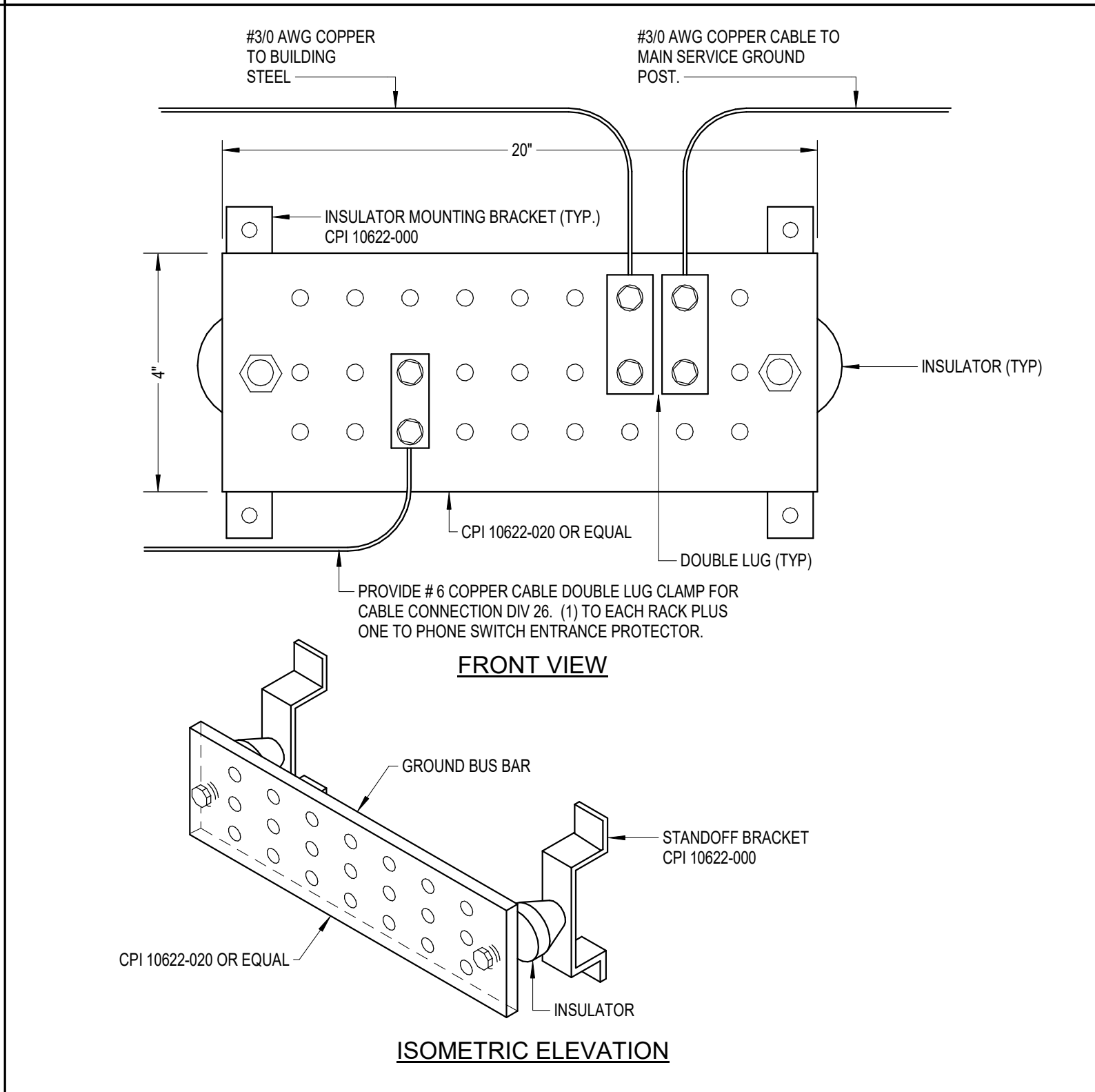
PANELBOARD NAMEPLATE
No Scale



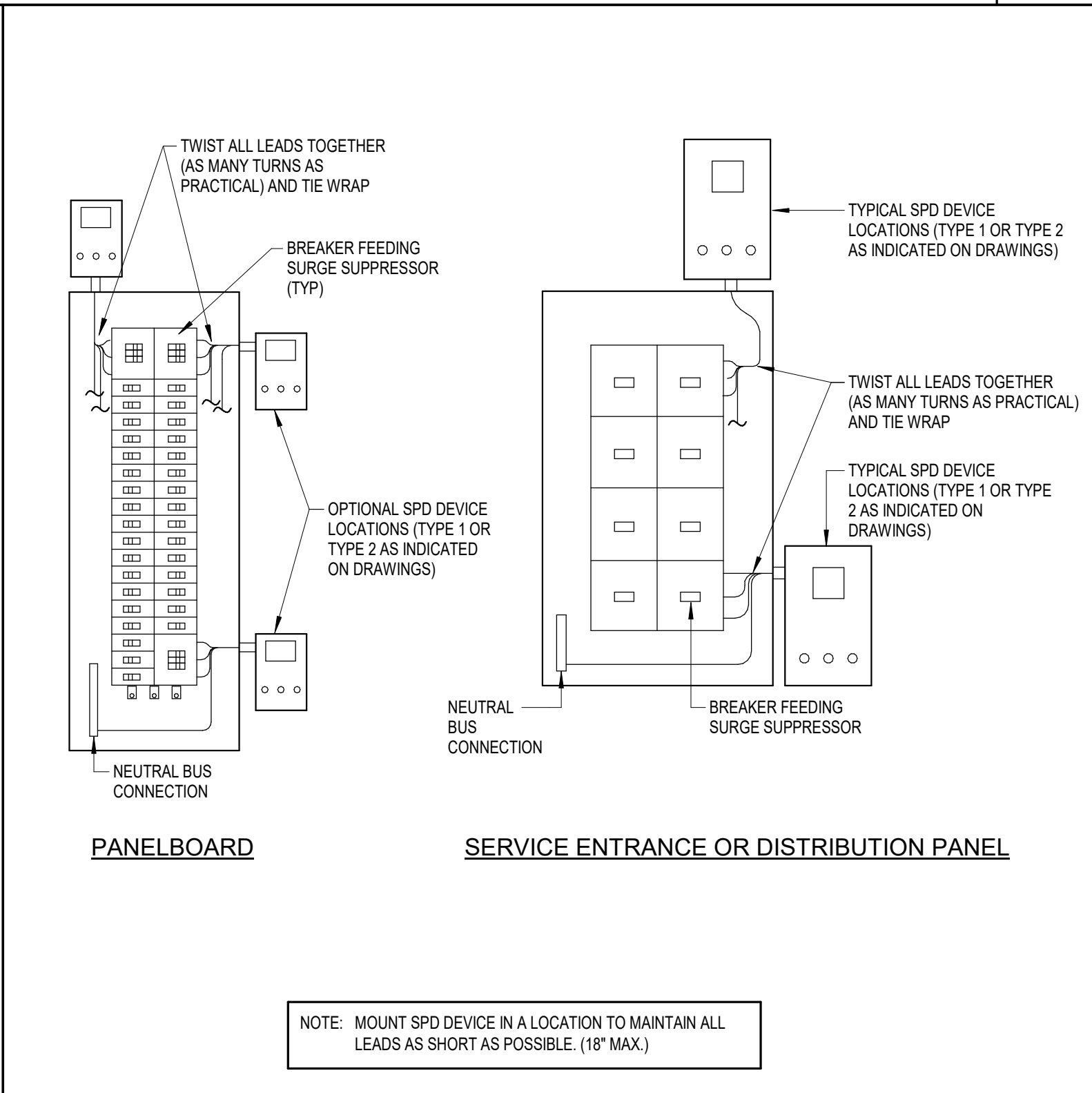
MOUNTING HEIGHTS
No Scale



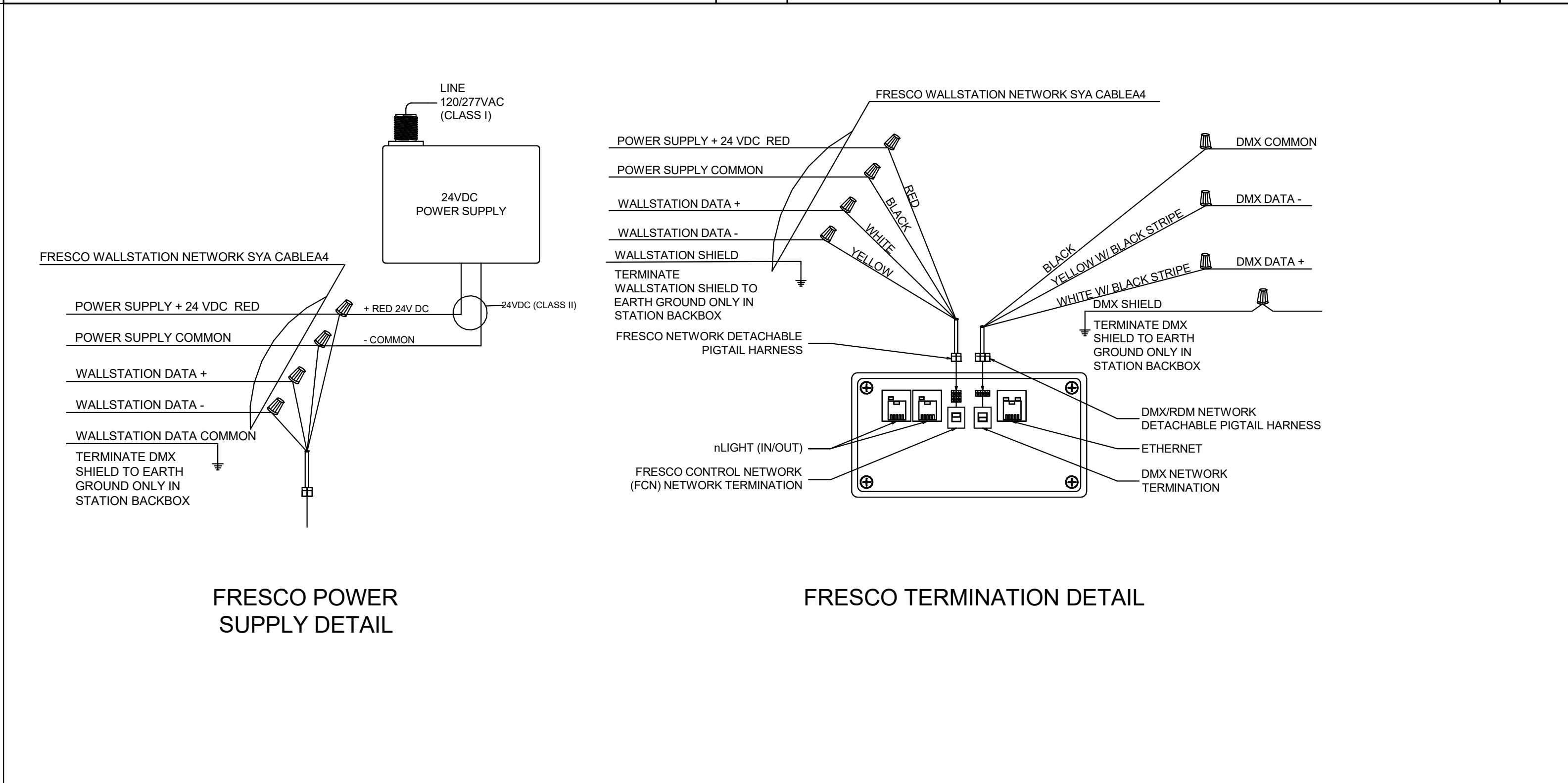
FLAG POLE LIGHT FIXTURE MOUNTING
No Scale



GROUND BAR
No Scale



SPD EXTERIOR MOUNT INSTALLATION
No Scale



SCENE CONTROLLER WIRING AND TERMINATION
No Scale

NO.	DESCRIPTION	DATE

STEPHEN B. COTTON, P.E.

KTH ARCHITECTS
 1741 KOWANIS TRAIL • DUBOIS PA • 814.371.1941 • F 814.371.8801 • KTHarch.com
 800 NORTH HIGHLAND AVE • ORLANDO, FL • 407.203.6707 • F 407.493.0650

LAKE COUNTY
 FIRE STATION NO. 71
 ELECTRICAL DETAILS
 33661 CR 473, LEESBURG, FL 34788
 20073A

100% CD Submittal - Bid Set
 NOVEMBER 10, 2021
E6.1

TLC ENGINEERING
 7370 Cabot Court, Suite 103
 Melbourne, FL 32940
 P 321.636.0274
 COA 15
 www.tlc-engineers.com
 TLC No. 521157
 THINK. LISTEN. CREATE.

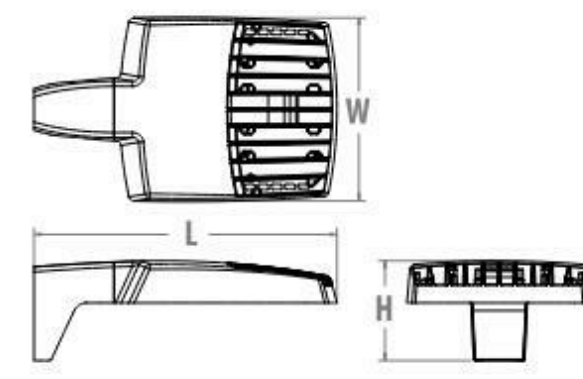


RSX1 LED Area Luminaire



Specifications

EPA (ft ² @0°):	0.57 ft ² (0.05 m ²)
Length:	21.8" (55.4 cm) (SPA mount)
Width:	13.3" (33.8 cm)
Height:	3.0" (7.6 cm) Main Body 7.2" (18.4 cm) Arm
Weight: (SPA mount):	22.0 lbs (10.0 kg)



Category	Area
Series	SLA

Introduction

The new RSX LED Area family delivers maximum value by providing significant energy savings, long life and outstanding photometric performance at an affordable price. The RSX1 delivers 7,000 to 17,000 lumens allowing it to replace 70W to 400W HID luminaires.

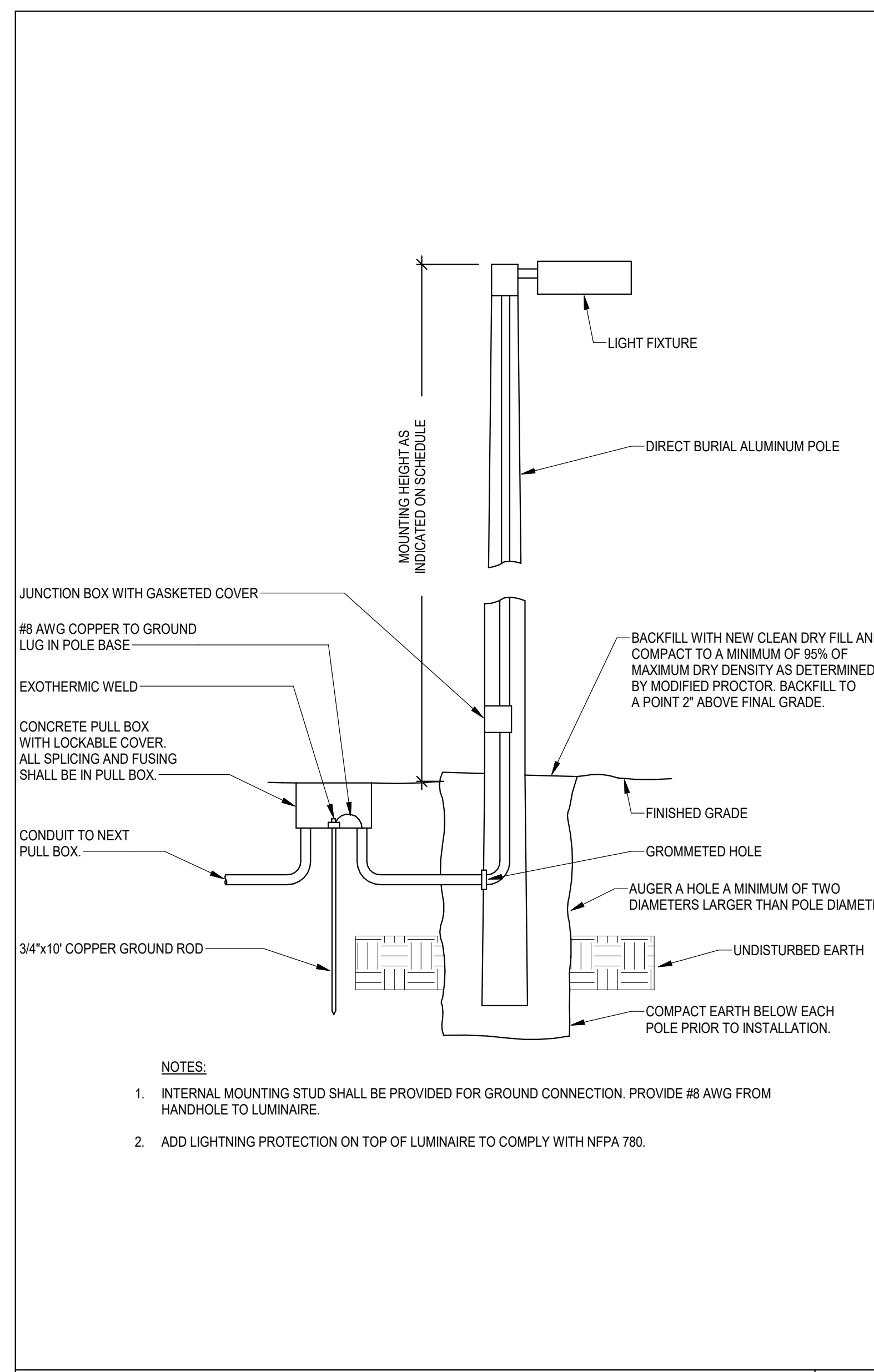
The RSX features an integral universal mounting mechanism that allows the luminaire to be mounted on most existing drill hole patterns. This "no-drill" solution provides significant labor savings. An easy-access door on the bottom of mounting arm allows for wiring without opening the electrical compartment. A mast arm adaptor, adjustable integral slipfitter and other mounting configurations are available.

Ordering Information

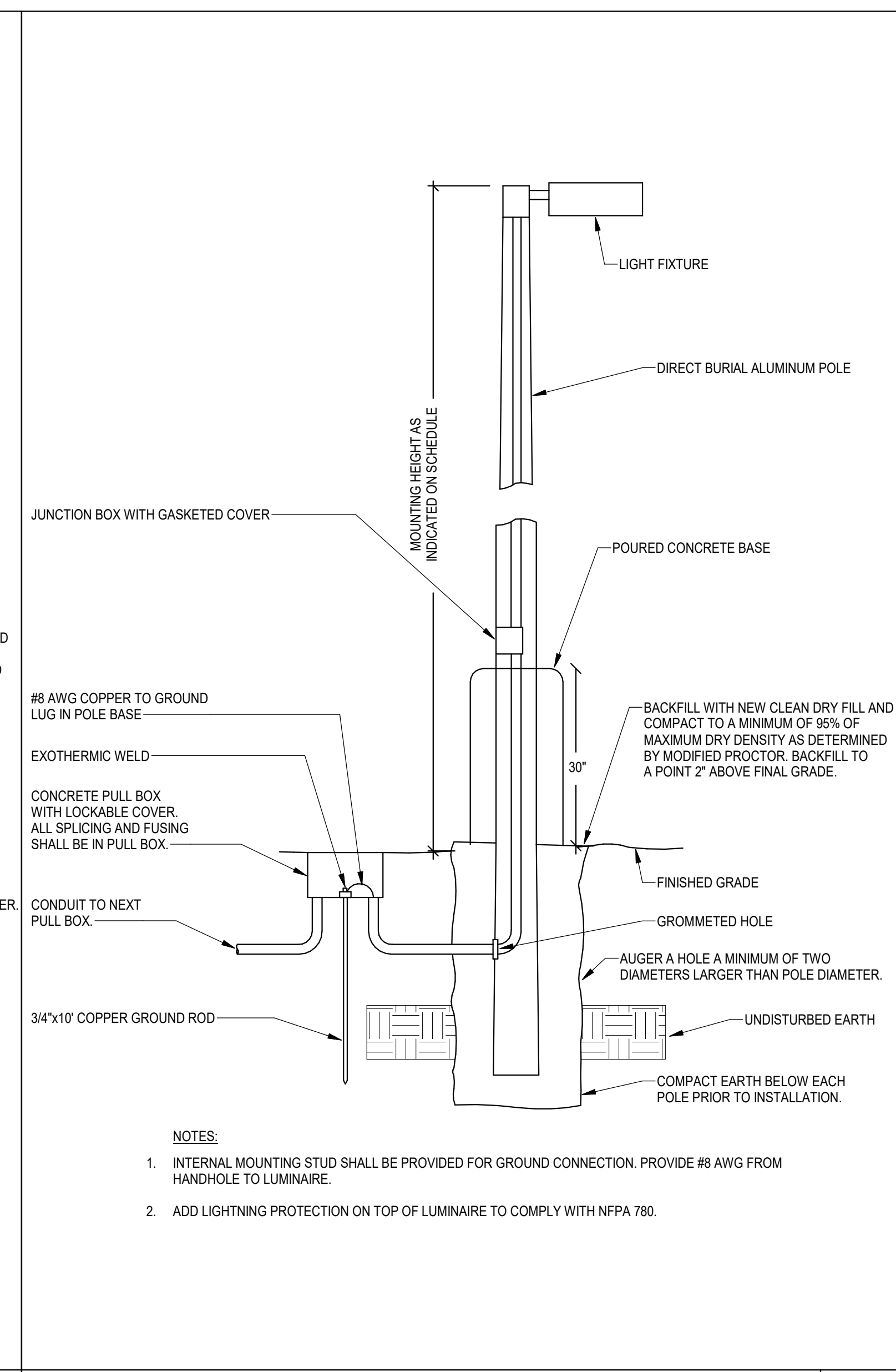
RSX1 LED	P2	40K	R4	MVOLT	RPA
Series	Performance Package	Color Temperature	Distribution	Voltage	Mounting
RSX1 LED	P1	30K 3000K	R2 Type 2 Wide	MVOLT (120V-277V) ¹	SPA Square pole mounting (3.0" min. SQ pole for 1 at 90°, 3.5" min. SQ pole for 2, 3, 4 at 90°)
	P2	40K 4000K	R3 Type 3 Wide	XVOLT (347V-480V) ²	RPA Round pole mounting (3.2" min. dia. RND pole for 2, 3, 4 at 90° for 1 at 90°, 2 at 180°, 3 at 105°)
	P3	50K 5000K	R5 Type 5 Wide	XVOLT (277V-480V) ²	MA Mast arm adaptor (fits 2-3/8" OD horizontal sensor)
	P4		R4 Type 4 Short	<i>(see specific voltage for options as noted)</i>	
			R45 Type 4 Short	IS Adjustable slipfitter (fits 2-3/8" OD sensor) ⁴	IS Adjustable slipfitter (fits 2-3/8" OD sensor) ⁴
			R5 Type 5 Wide-1	120 ¹ 277 ¹	WBA Wall bracket ¹
			R55 Type 5 Short-1	208 ¹ 347 ¹	WBASC Wall bracket with surface conduit box
			AIR Automatic Front Row	240 ¹ 480 ¹	AASP Adjustable tilt arm square pole mounting ⁴
			AIR90 Automatic Front Row Right Rotated		AARP Adjustable tilt arm round pole mounting ⁴
			AIRL90 Automatic Front Row Left Rotated		AAMW Adjustable tilt arm with wall bracket ⁴
					AAWS Adjustable tilt arm wall bracket and surface conduit box ⁴

NLTAIR2 PIRHN	DDBXD
Options	Finish
Shipped Installed	DDBXD Dark Bronze
H5 House side shield ¹	DBXD Black
PE Photocontrol button cycle ¹¹	DNAD Natural Aluminum
PEX Photocontrol external threaded, adjustable ^{11*}	DWHD White
PER7 Seven-wire twist lock receptacle only (no controls) ^{11**12}	DDBTD Textured Dark Bronze
CE34 Cordset entry 3/4" NPT (Qty 2)	DRBDD Textured Dark Bronze
SF Single face (120, 277, 347) ¹	DDBDD Textured Dark Bronze
DF Double face (120, 240, 480) ¹	DNADD Textured Natural Aluminum
SPD20V 200V Surge disk (100V standard)	DWBGD Textured White
FAO Field adjustable output ¹¹	
DMG 0-10V dimming output (noted on back of housing for external control control ordered separately) ¹¹	

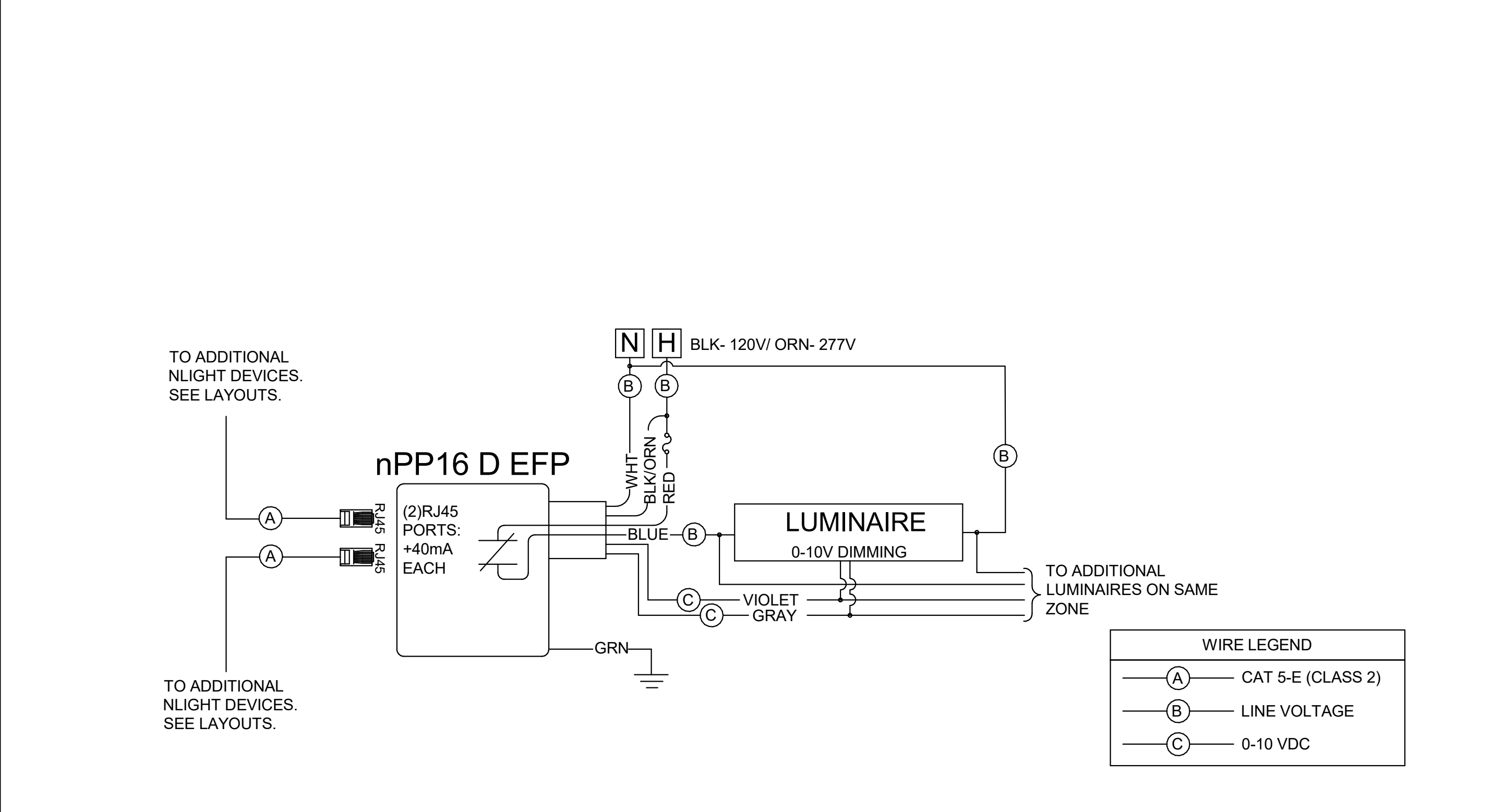
One Lithonia Way • Conyers, Georgia 30012 • Phone: 1-800-705-SERV (7378) • www.lithonia.com
© 2018-2021 Acuity Brands Lighting, Inc. All rights reserved.



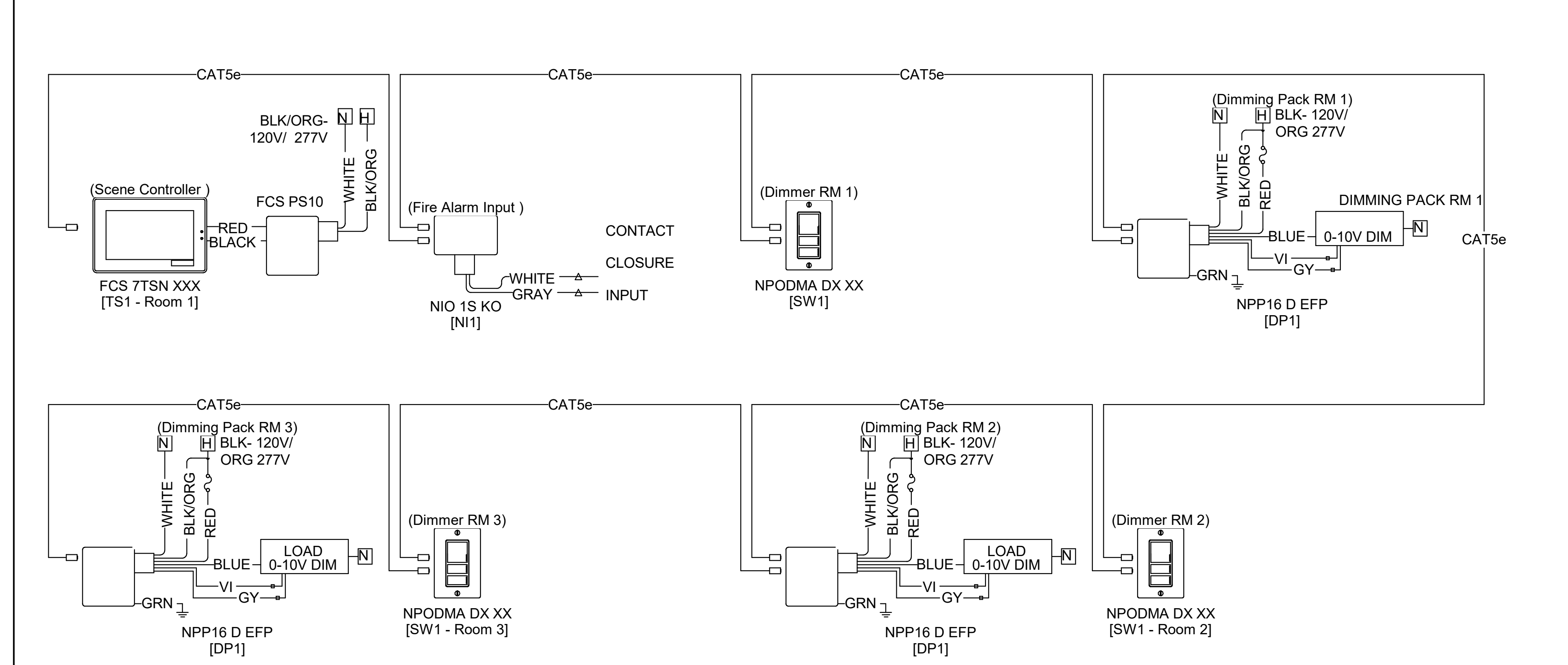
DIRECT BURIED POLE - NO CONCRETE BUMPER
No Scale



DIRECT BURIED POLE - 30" CONCRETE BUMPER
No Scale



LIGHTING CONTROLS - POWER PACK WIRING DIAGRAM
No Scale



LIGHTING CONTROLS - SLEEPING ROOMS
No Scale

DATE	
DESCRIPTION	
NO.	
STEPHEN B. COTTON, P.E.	
11/8/2021 1:36:01 PM	
John P. Adams, AIA Jerome Bankovich, Jr., AIA, LEED Ethan J. Hine, AIA Jennifer Zaffuto, AIA, LEED, NCARB	
1141 KOWANIS TRAIL • DUBOIS, PA • 814.371.1941 • F 814.371.8801 • KTHArch.com 880 NORTH HIGHLAND AVE. • ORLANDO, FL • 407.203.6707 • F 407.409.0650	
KTH ARCHITECTS	
20073A	
LAKE COUNTY FIRE STATION NO. 71 ELECTRICAL DETAILS	
33661 CR 473, LEESBURG, FL 34788	
NOVEMBER 10, 2021	
100% CD Submittal - Bid Set	
E6.2	

