

## FENCE INSTALLATION AND RELATED SERVICES

**1. PROJECT SPECIFICATIONS**

The initial project is for North Lake Regional Park Backstop Fence and Gate installation located at 40730 Roger Giles Rd, Umatilla, FL 32784. The project consists of furnishing and installing approximately one hundred and five (105) linear feet of eighteen (18) foot high, black powder coated, 6-gauge, schedule-40, chain link backstop fence, vinyl coated mesh, and gate. The project work site is located at field S1 per the provided map.

The contractor shall verify and coordinate all work to field locations and dimensions prior to submitting a bid. Contractor may use on-site storage area to store equipment at the Contractor's Risk. No paint, materials, or equipment shall be stored within the buildings.

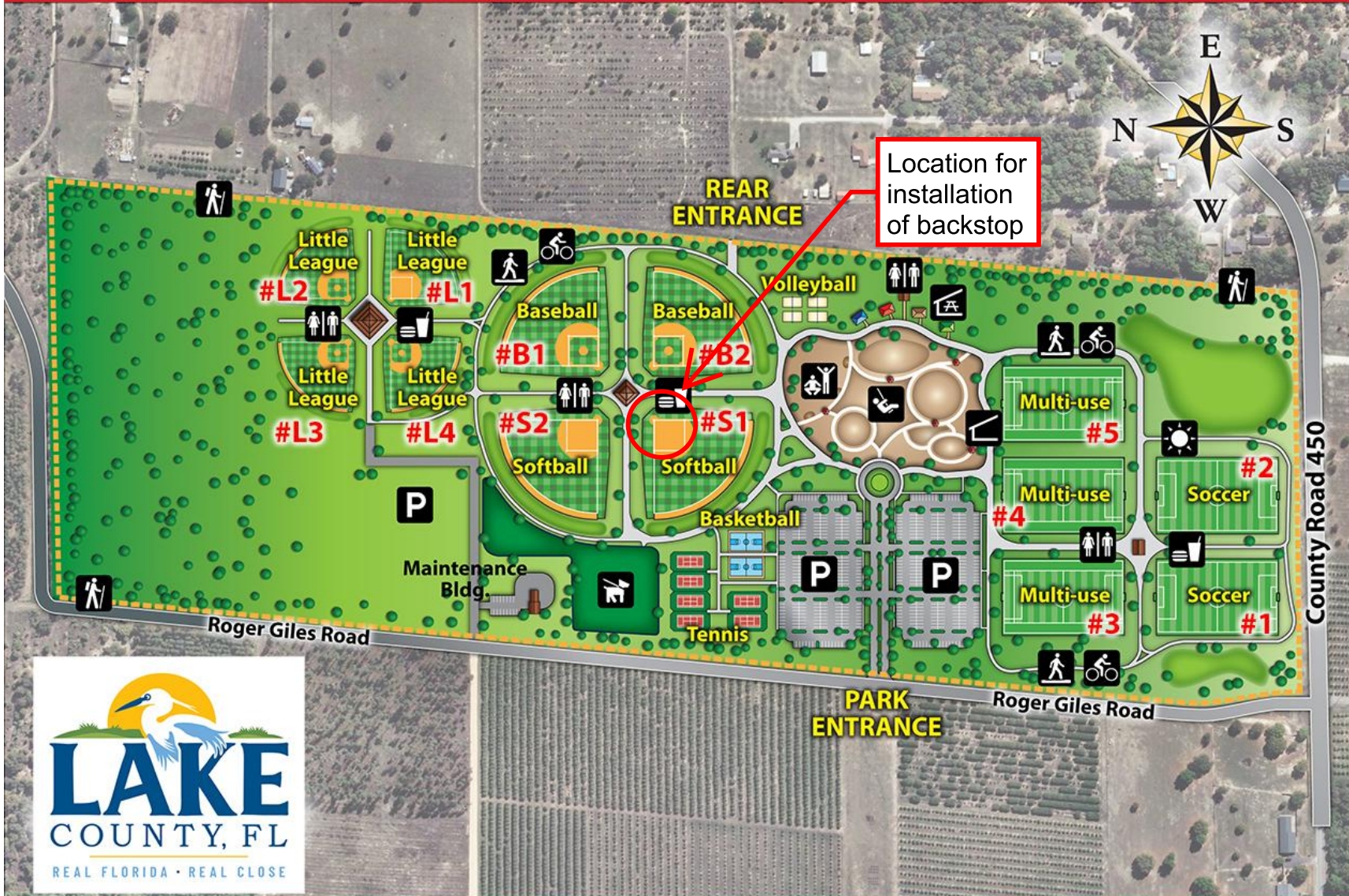
All work shall be coordinated with the Office of Parks and Trails forty-eight (48) hours prior to the delivery and installation.

**2. TECHNICAL SPECIFICATIONS**

- 2.1. The backstop fence to be installed shall match the specifications on the existing backstop fence located on field S2 per the attached reference photo and map. The only difference will be the finished height. Backstop on field S2 is twenty-four (24) feet high. New backstop fence on field S1 will be eighteen (18) feet high.
- 2.2. Post spacing to remain five (5) feet minimum.
- 2.3. Line posts are 4 inches in diameter.
- 2.4. All terminal and line post to be set in mixed concrete foundations, twelve (12) inches in diameter by forty-eight (48) inches deep minimum.
- 2.5. Depth of posts into ground/footer is four (4) feet. (Line, end, gate, and corner posts).
- 2.6. Top, bottom, upper middle and lower middle rails are 1 5/8" diameter.
- 2.7. Horizontal braces at corner and end posts are two (2) at 1 5/8".
- 2.8. Diagonal braces are 1/2" in diameter.
- 2.9. Tie wire is #6-gauge (0.192 inches) aluminum ties at fifteen inches (15") on center for rails.
- 2.10. Ties to be twelve inches (12") apart on posts and the end of ties should be wound in a telegraph twist, 2 ½ turns.
- 2.11. All hardware shall be painted black to ensure a uniform finish.
- 2.12. All bolts shall be cut back to a finished length of less than three (3) threads exposed.
- 2.13. Furnish and install a four (4) foot wide by eight (8) foot high walk-through gate in existing backstop fence.

*[The remainder of this page intentionally left blank]*

# North Lake Regional Park



## SITE DIRECTORY

TOTAL ACRES: 115

- Parking
- Restroom
- Concession

- Shelter
- Pavilion
- Multi-Use Trail

- Exercise Station
- Playground
- Hiking Trail

- Dog Park
- Path Lighting (Typical)





Finished Height of Proposed Backstop to be 18 Feet.

Gate Needed on Field S1 (Existing Backstop)

For Reference only





For Reference only