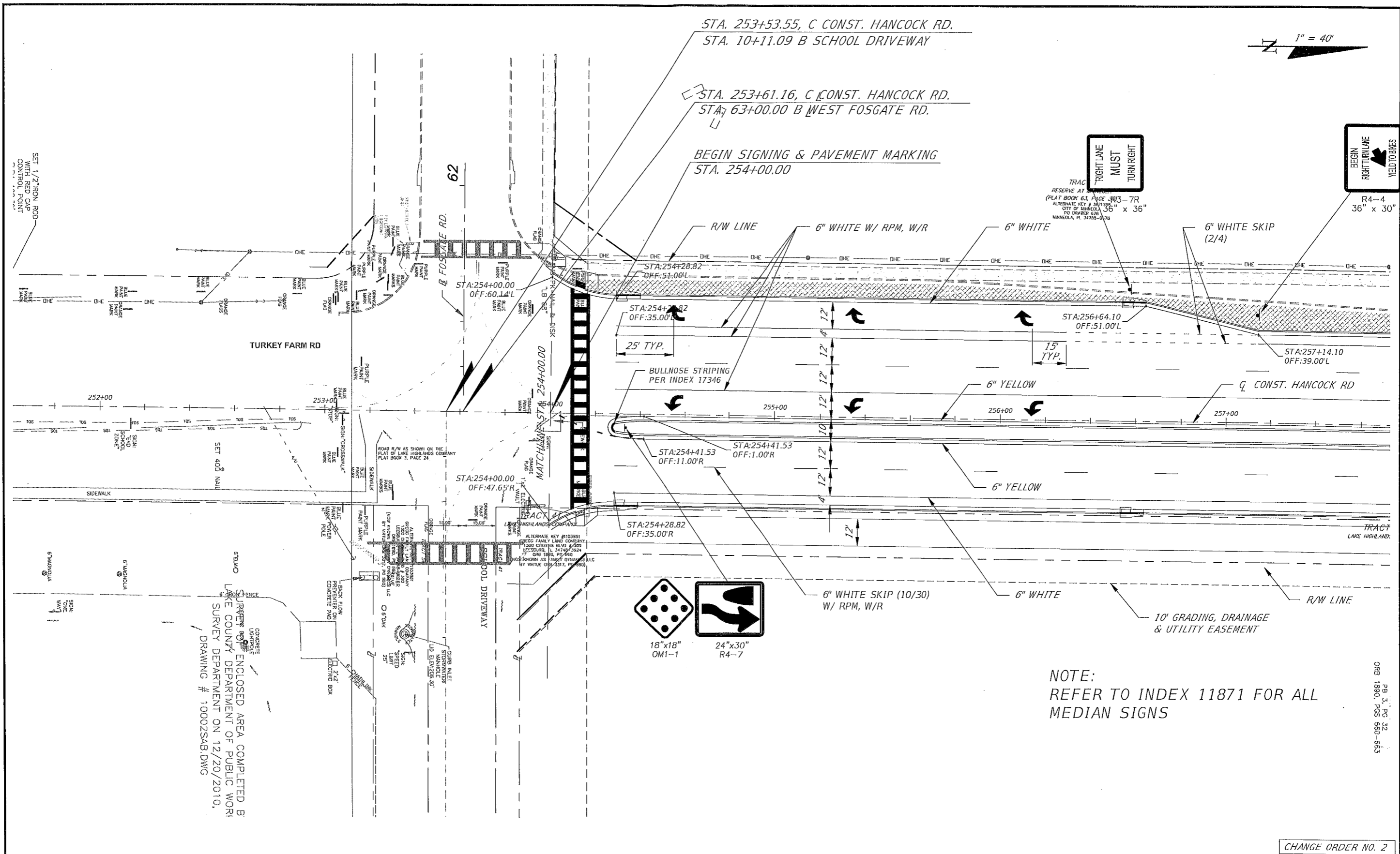



1" = 40'



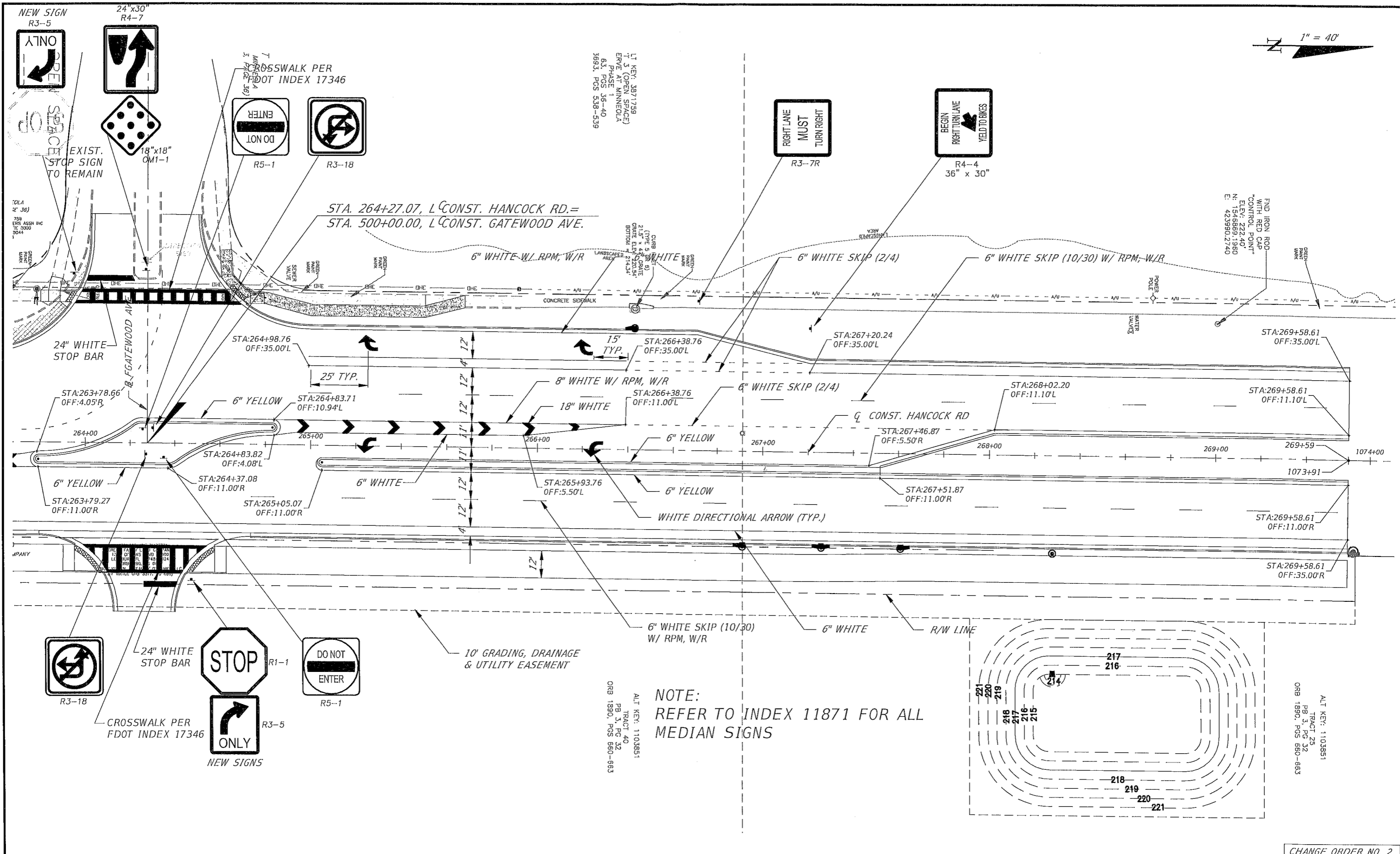
NOTE:
REFER TO INDEX 11871 FOR ALL
MEDIAN SIGNS

ORR 1890, PGS 560-663

CHANGE ORDER NO. 2

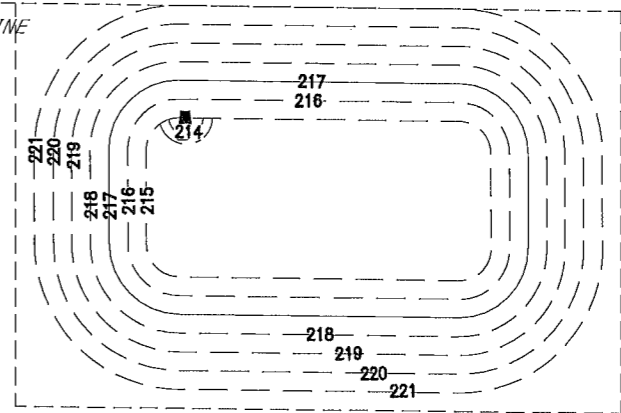
REVISIONS REV. RFP-14		DATE	SECTION 8 & 9	TOWNSHIP 22E	RANGE 26E	 <p> DEPARTMENT OF PUBLIC WORKS ENGINEERING DIVISION 437 ARDICE AVE. EUSTIS, FLORIDA 32726 </p>	SIGNATURE DATE ALAN KIRKLAND, P.E. NO. 61729	STRIPING PLAN NORTH HANCOCK ROAD	SHEET NO. 32
DESIGNED: RES	DATE: AUG. 2014	DRAWN: RES	DATE: AUG. 2014	APPROVED: AK	DATE: AUG. 2014				
DRAWING # 10002SAB.DWG SURVEY DEPARTMENT ON 12/20/2010. ENCLOSED AREA COMPLETED BY SURVEY DEPARTMENT OF PUBLIC WORKS									

1" = 40'



1.1 KEY: 3871759
 1.2 KEY: 3871759
 1.3 KEY: 3871759
 1.4 KEY: 3871759
 1.5 KEY: 3871759
 1.6 KEY: 3871759
 1.7 KEY: 3871759
 1.8 KEY: 3871759
 1.9 KEY: 3871759
 1.10 KEY: 3871759
 1.11 KEY: 3871759
 1.12 KEY: 3871759
 1.13 KEY: 3871759
 1.14 KEY: 3871759
 1.15 KEY: 3871759
 1.16 KEY: 3871759
 1.17 KEY: 3871759
 1.18 KEY: 3871759
 1.19 KEY: 3871759
 1.20 KEY: 3871759
 1.21 KEY: 3871759
 1.22 KEY: 3871759
 1.23 KEY: 3871759
 1.24 KEY: 3871759
 1.25 KEY: 3871759
 1.26 KEY: 3871759
 1.27 KEY: 3871759
 1.28 KEY: 3871759
 1.29 KEY: 3871759
 1.30 KEY: 3871759
 1.31 KEY: 3871759
 1.32 KEY: 3871759
 1.33 KEY: 3871759
 1.34 KEY: 3871759
 1.35 KEY: 3871759
 1.36 KEY: 3871759
 1.37 KEY: 3871759
 1.38 KEY: 3871759
 1.39 KEY: 3871759
 1.40 KEY: 3871759
 1.41 KEY: 3871759
 1.42 KEY: 3871759
 1.43 KEY: 3871759
 1.44 KEY: 3871759
 1.45 KEY: 3871759
 1.46 KEY: 3871759
 1.47 KEY: 3871759
 1.48 KEY: 3871759
 1.49 KEY: 3871759
 1.50 KEY: 3871759
 1.51 KEY: 3871759
 1.52 KEY: 3871759
 1.53 KEY: 3871759
 1.54 KEY: 3871759
 1.55 KEY: 3871759
 1.56 KEY: 3871759
 1.57 KEY: 3871759
 1.58 KEY: 3871759
 1.59 KEY: 3871759
 1.60 KEY: 3871759
 1.61 KEY: 3871759
 1.62 KEY: 3871759
 1.63 KEY: 3871759
 1.64 KEY: 3871759
 1.65 KEY: 3871759
 1.66 KEY: 3871759
 1.67 KEY: 3871759
 1.68 KEY: 3871759
 1.69 KEY: 3871759
 1.70 KEY: 3871759
 1.71 KEY: 3871759
 1.72 KEY: 3871759
 1.73 KEY: 3871759
 1.74 KEY: 3871759
 1.75 KEY: 3871759
 1.76 KEY: 3871759
 1.77 KEY: 3871759
 1.78 KEY: 3871759
 1.79 KEY: 3871759
 1.80 KEY: 3871759
 1.81 KEY: 3871759
 1.82 KEY: 3871759
 1.83 KEY: 3871759
 1.84 KEY: 3871759
 1.85 KEY: 3871759
 1.86 KEY: 3871759
 1.87 KEY: 3871759
 1.88 KEY: 3871759
 1.89 KEY: 3871759
 1.90 KEY: 3871759
 1.91 KEY: 3871759
 1.92 KEY: 3871759
 1.93 KEY: 3871759
 1.94 KEY: 3871759
 1.95 KEY: 3871759
 1.96 KEY: 3871759
 1.97 KEY: 3871759
 1.98 KEY: 3871759
 1.99 KEY: 3871759
 2.00 KEY: 3871759


NOTE:
 REFER TO INDEX 11871 FOR ALL
 MEDIAN SIGNS



ALT KEY: 1103851
 TRACT 23
 PG 3, PG 32
 ORB 1890, POS 860-863

CHANGE ORDER NO. 2

REVISIONS		DATE	SECTION	TOWNSHIP	RANGE
REV. RFP-14			8 & 9	22E	26E
DESIGNED:	RES	DATE:	AUG. 2014		
DRAWN:	RES	DATE:	AUG. 2014		
APPROVED:	AK	DATE:	AUG. 2014		



LAKE COUNTY
FLORIDA

DEPARTMENT OF PUBLIC WORKS
ENGINEERING DIVISION
 437 ARDICE AVE.
 EUSTIS, FLORIDA 32726

SIGNATURE
 DATE
 ALAN KIRKLAND, P.E. NO. 61729

STRIPING PLAN
NORTH HANCOCK ROAD

SHEET
 NO.
34