

## Marchese, Deborah

---

**From:** Kirkland, Alan  
**Sent:** Tuesday, November 25, 2014 2:29 PM  
**To:** Marchese, Deborah  
**Subject:** FW: Hancock Rd  
**Attachments:** PLANRD18.pdf

Deb,  
Here is the revised Sht 39. I will let you distribute to the guys.

Alan

---

**From:** Dino Lucarelli [<mailto:dino.lucarelli@tylin.com>]  
**Sent:** Tuesday, November 25, 2014 9:15 AM  
**To:** Kirkland, Alan  
**Subject:** FW: Hancock Rd

Alan, please see attached.

**Dino Lucarelli, P.E.**  
Senior Transportation Engineer

**T.Y. LIN INTERNATIONAL**

225 East Robinson Street, Suite 490  
Orlando, Florida 32801  
407.563.7103 T  
407.999.5228 F

407.416.9023 (Cell)

Visit us online at [www.tylin.com](http://www.tylin.com)

---

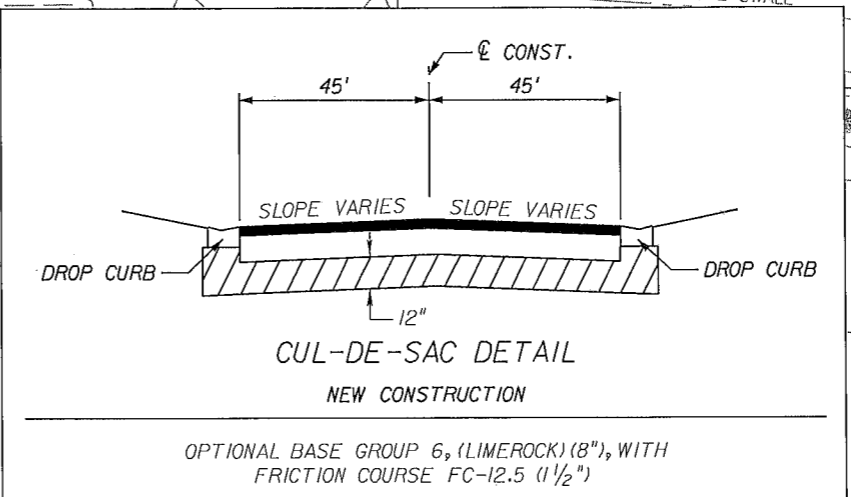
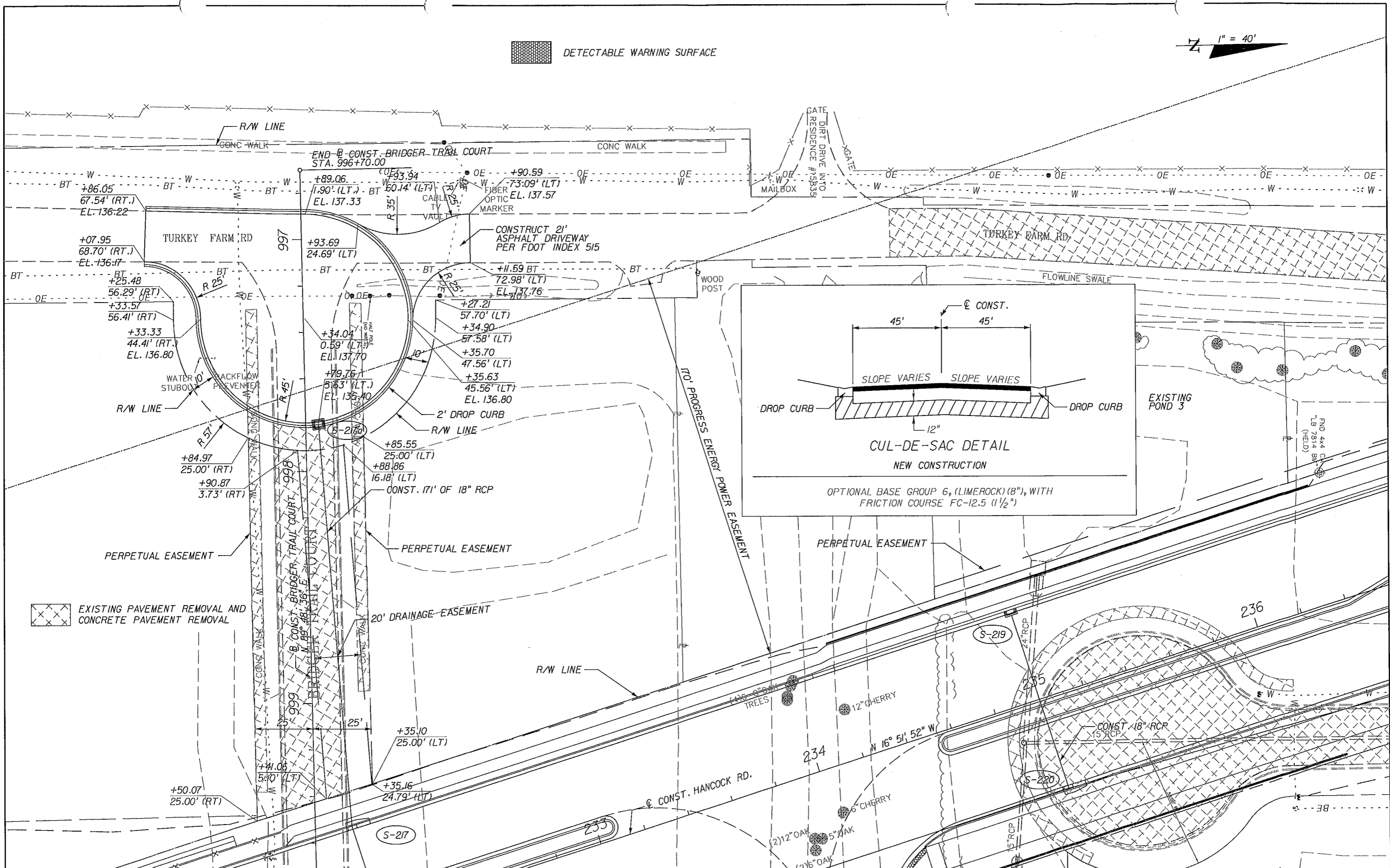
**From:** Christopher Kruger  
**Sent:** Friday, November 21, 2014 5:29 PM  
**To:** Dino Lucarelli  
**Subject:** Hancock Rd

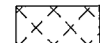
Here's the drawing...

Chris Kruger  
**TYLIN INTERNATIONAL**  
225 E. Robinson Street, Suite 490  
Orlando, FL 32801  
407.563.7101 main  
407.563.7104 direct  
407.999.5228 fax  
[chris.kruger@tylin.com](mailto:chris.kruger@tylin.com)  
Visit us online at [www.tylin.com](http://www.tylin.com)

 DETECTABLE WARNING SURFACE

1" = 40'



 EXISTING PAVEMENT REMOVAL AND CONCRETE PAVEMENT REMOVAL

REVISIONS	DATE

**TYLIN INTERNATIONAL**  
 225 E. ROBINSON STREET, SUITE 490  
 ORLANDO, FLORIDA 32801  
 P 407.563.7101 F 407.999.5228  
 CERTIFICATE OF AUTHORIZATION 00002017



**LAKE COUNTY  
DEPARTMENT OF PUBLIC WORKS  
ENGINEERING DIVISION**  
 437 ARDICE AVENUE  
 EUSTIS, FLORIDA 32726

SIGNATURE  
 DATE  
 DINO E. LUCARELLI, P.E. NO. 39556

**PLAN  
TURKEY FARM ROAD**

SHEET NO.  
39