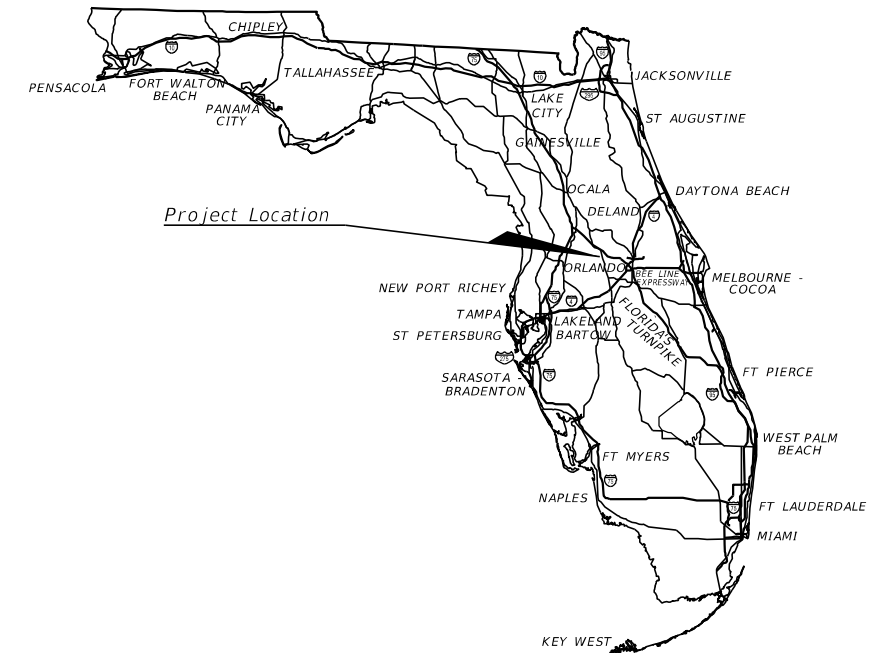




CONTRACT PLANS

LAKE COUNTY, FLORIDA GRASSY LAKE ROAD

MAINTENANCE OF TRAFFIC PLANS



INDEX OF MOT PLANS

SHEET NO.	SHEET DESCRIPTION
1	KEY SHEET
2	GENERAL NOTES AND LEGEND
3	DETOUR OVERVIEW
4 THRU 11	DETOUR PLAN SHEET

PROJECT LOCATION



GOVERNING STANDARDS AND SPECIFICATIONS:
 Florida Department of Transportation, 2017/18 Design Standards and revised Index Drawings as appended herein, and 2017/18 Standard Specifications for Road and Bridge Construction, as amended by Contract Documents.

For Design Standards click on the "Design Standards" link at the following web site:
<http://www.fdot.gov/design/standardplans/DS.shtm> Design Standards

For the Standard Specifications for Road and Bridge Construction click on the "Specifications" link at the following web site:
<http://www.fdot.gov/programmanagement/Implemented/SpecBooks/default.shtm> Standard Specifications

KEY SHEET REVISIONS	
DATE	DESCRIPTION

100% PLANS

PLANS PREPARED BY:
TMC
 Traffic & Mobility Consultants
 3101 MAGUIRE BLVD
 SUITE 265
 ORLANDO, FL 32803

PLANS PREPARED FOR:
 JR DAVIS CONSTRUCTION COMPANY
 210 S. HOAGLAND BOULEVARD
 KISSIMMEE, FL 34741

NOTE: THE SCALE OF THESE PLANS MAY HAVE CHANGED DUE TO REPRODUCTION.

MOT PLANS
 ENGINEER OF RECORD: MATTHEW J. WILSON, PE

P.E. NO.: 71605

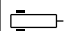


TMC PROJECT No.	FISCAL YEAR	SHEET NO.
18060	18	1



THE OFFICIAL RECORD OF THIS SHEET IS THE ELECTRONIC FILE DIGITALLY SIGNED AND SEALED UNDER RULE 61G15-23.004, F.A.C.

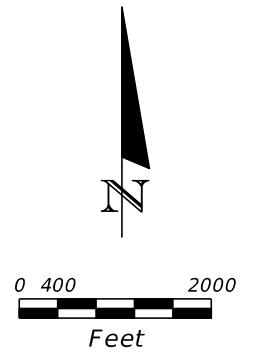
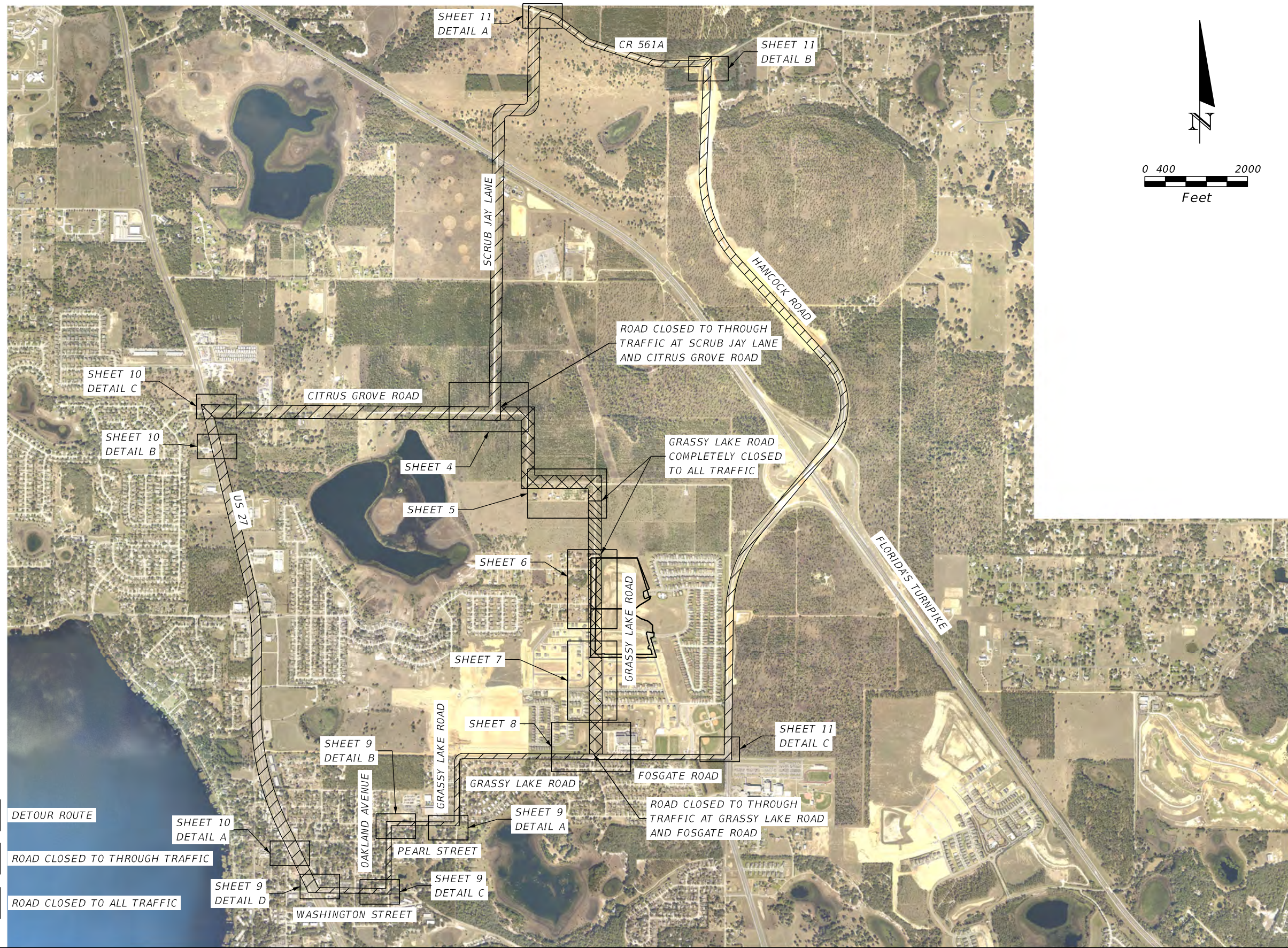
GENERAL NOTES

1. MAINTENANCE OF TRAFFIC SHALL BE IN ACCORDANCE WITH THE MANUAL ON UNIFORM TRAFFIC CONTROL DEVICES (2009 EDITION AND REVISIONS) AND THE FLORIDA DEPARTMENT OF TRANSPORTATION ROADWAY DESIGN STANDARDS (2018 EDITION).
2. THE CONTRACTOR SHALL CALL LAKE COUNTY TRANSPORTATION AND TRAFFIC OPERATIONS AT (352) 483-9040 ONE (1) WEEK PRIOR TO THE START OF ANY PHASE OF WORK TO REQUEST STREET, LANE OR SIDEWALK CLOSURE AUTHORIZATION.
3. LOCAL RESIDENTIAL/BUSINESS ACCESS SHALL BE MAINTAINED AT ALL TIMES. CONTRACTOR SHALL PROVIDE WRITTEN NOTIFICATION TO THE RESIDENTS/BUSINESSES AFFECTED BY CONSTRUCTION ACTIVITIES, ONE (1) WEEK IN ADVANCE OF THE START OF ANY PHASE OF CONSTRUCTION. THE CONTRACTOR SHALL PROVIDE COPIES OF THE NOTIFICATION TO THE TRAFFIC CONTROL MANAGER PRIOR TO DISTRIBUTION.
4. THE CONTRACTOR SHALL NOTIFY THE LAKE COUNTY SCHOOL BOARD, SAFETY MANAGER, (352) 253-6500 ONE (1) WEEK IN ADVANCE OF THE START OF ANY PHASE OF CONSTRUCTION TO COORDINATE SCHOOL BUS RE-ROUTING.
5. LAKE COUNTY RESERVES THE RIGHT TO REQUIRE ADDITIONAL DEVICES AND/OR CHANGES TO THE TRAFFIC CONTROL PLAN BASED UPON CHANGING TRAFFIC CONDITIONS.
6. ANY CHANGES MADE TO THE TRAFFIC CONTROL PLAN BY THE CONTRACTOR, SHALL BE SIGNED AND SEALED BY A REGISTERED PROFESSIONAL ENGINEER AND APPROVED BY LAKE COUNTY TRANSPORTATION AND TRAFFIC OPERATIONS PRIOR TO IMPLEMENTATION.
7. THE NUMBER OF DEVICES SHOWN IN THESE PLANS IS FOR ILLUSTRATION PURPOSES. ADDITIONAL DEVICES MAY BE REQUIRED TO PROPERLY PROTECT THE WORKERS AND WORK ZONE FROM VEHICULAR TRAFFIC.
8. TEMPORARY MARKINGS REQUIRED ON FINAL SURFACES OR SURFACES NOT BEING REPAVED SHALL BE INSTALLED USING 3M BRAND STAMARK REMOVABLE TAPE, SERIES 780, WET REFLECTIVE TEMPORARY TAPE OR APPROVED EQUAL. THE USE OF "FOIL BACK" TYPES OF TEMPORARY TAPE IS NOT PERMITTED.
9. 3M BRAND REMOVABLE BLACK MASK TAPE, SERIES 145, IS THE ONLY APPROVED MATERIAL FOR "BLACKING OUT" OF EXISTING PAVEMENT MARKINGS ON FINAL ROADWAY SURFACES NOT BEING REPAVED. UNDER NO CIRCUMSTANCES WILL BLACK PAINT OR GRINDING BE PERMITTED.
10. PAINT PRODUCTS AND RETRO-REFLECTIVE PAVEMENT MARKERS WILL BE CONSIDERED TEMPORARY PAVEMENT MARKING MATERIALS ON SURFACES THAT ARE TO BE MILLED AND RESURFACED.
11. EXISTING PAVEMENT MARKINGS, WHICH ARE TO BE OBLITERATED, SHALL BE RESTORED TO ORIGINAL CONDITION UPON COMPLETION OF CONSTRUCTION AND PRIOR TO REINSTATING VEHICULAR TRAFFIC.
12. ALL SIGNS AND TRAFFIC CONTROL DEVICES SHALL BE NEW OR LIKE NEW CONDITION. ALL SIGNS SHALL BE POST MOUNTED UNLESS OTHERWISE INDICATED.
13. CHANNELIZING DRUMS SHALL BE USED ON NEWLY PAVED ROADWAYS.
14. DURING NON-WORKING HOURS, NO EQUIPMENT, VEHICLES OR MATERIAL SHALL BE PARKED OR STORED WITHIN THE CLEAR ZONE OF A ROADWAY OPEN TO VEHICULAR TRAFFIC.
15. EXISTING REGULATORY AND WARNING SIGNS ARE TO BE MAINTAINED AT ALL TIMES UNLESS OTHERWISE NOTED.
16. PEDESTRIAN CONTROL SHALL BE MAINTAINED ON ONE SIDE OF THE ROAD AT ALL TIMES. IF UNABLE TO DO SO, THE CONTRACTOR SHALL PROVIDE TEMPORARY WALKWAYS, BOARDWALKS AND/OR TEMPORARY CONCRETE SIDEWALKS. ALL RAMPS, WALKWAYS, ETC. ARE TO BE ADA COMPLIANT. ANY CURB(S) MODIFIED FOR THE INSTALLATION OF A TEMPORARY CURB RAMP MUST BE BROUGHT BACK TO PRE-CONSTRUCTION CONDITION AT CLOSURE OF MOT.
17. ON STREET PARKING, WHERE ALLOWED, IS FOR THE GENERAL PUBLIC AND SHALL NOT BE USED FOR ANY OF THE FOLLOWING; CONTRACTOR OR SUBCONTRACTOR PARKING, CONSTRUCTION STAGING, TRUCK STAGING, STORING OF MATERIALS ETC.
18. DELIVERY TRUCKS SHALL NOT BLOCK TRAFFIC.
19. THE CONTRACTOR SHALL BE RESPONSIBLE FOR INSURING EACH EMPLOYEE SUPERVISING THE SELECTION AND PLACEMENT OF MAINTENANCE OF TRAFFIC (MOT) CONTROL DEVICES SHALL BE PROPERLY TRAINED BY ATTENDING AND SUCCESSFULLY COMPLETING A FLORIDA DEPARTMENT OF TRANSPORTATION (FDOT) APPROVED MOT COURSE. THE TRAINING SHALL BE AT A LEVEL APPLICABLE TO THE EMPLOYEE'S LEVEL OF INVOLVEMENT. COPIES OF CERTIFICATIONS SHALL BE PROVIDED TO THE CITY TRANSPORTATION ENGINEERING DIVISION PRIOR TO IMPLEMENTING ANY PHASE OF MOT.
20. THE CONTRACTOR SHALL PROVIDE A TRAFFIC CONTROL SUPERVISOR (TCS) WHO IS RESPONSIBLE FOR INITIATING, INSTALLING AND MAINTAINING ALL TRAFFIC CONTROL DEVICES.
21. THE TCS SHALL BE AVAILABLE ON A 24-HOUR PER DAY BASIS, PARTICIPATE IN ALL CHANGES TO TRAFFIC CONTROL AND REVIEW THE PROJECT ON A DAY-TO-DAY BASIS.
22. THE TCS SHALL BE PRESENT DURING THE INITIAL SETUP OF THE TRAFFIC CONTROL PLAN AND ALL SUBSEQUENT PHASES OR CHANGES TO THE TRAFFIC CONTROL.
23. THE TCS SHALL IMMEDIATELY CORRECT ALL DEFICIENCIES.
24. THE CONTRACTOR SHALL ENSURE THE TCS BE AVAILABLE ON SITE WITHIN 45 MINUTES OF NOTIFICATION OF AN EMERGENCY SITUATION AND IS PREPARED TO RESPOND TO AND CORRECT THE TRAFFIC CONTROL OR PROVIDE ALTERNATE ARRANGEMENTS FOR CORRECTIVE ACTIONS.
25. THE TCS SHALL BE RESPONSIBLE FOR PERFORMING WEEKLY, DAYTIME AND NIGHTTIME INSPECTIONS OF ALL TRAFFIC CONTROL DEVICES, TRAFFIC FLOW, PEDESTRIAN, BICYCLIST MOVEMENT THROUGH THE WORK AREA AND BUSINESS ACCOMMODATIONS.
26. THE COUNTY MAY DISQUALIFY AND REMOVE FROM THE PROJECT A TRAFFIC CONTROL SUPERVISOR THAT FAILS TO COMPLY WITH THESE PROVISIONS. THE COUNTY MAY ALSO SUSPEND ALL WORK ACTIVITIES UNTIL CORRECTIVE ACTIONS HAVE BEEN COMPLETED.

LEGEND:

-  Portable Changeable (Variable) Message Sign
-  Type III Barricade
-  Work Zone Sign

REVISIONS				 TRAFFIC & MOBILITY CONSULTANTS, LLC 3101 MAGUIRE BLVD, SUITE 265 ORLANDO, FL 32803 OFFICE: (407) 531-5332 FAX: (407) 531-5331 MATTHEW J. WILSON, PE 71605 CERTIFICATE OF AUTHORIZATION: 30024		<i>GENERAL NOTES AND LEGEND</i>	SHEET NO.
DATE	DESCRIPTION	DATE	DESCRIPTION				2



LEGEND

	DETOUR ROUTE
	ROAD CLOSED TO THROUGH TRAFFIC
	ROAD CLOSED TO ALL TRAFFIC

REVISIONS			
DATE	DESCRIPTION	DATE	DESCRIPTION

TMC
Traffic & Mobility Consultants

TRAFFIC & MOBILITY CONSULTANTS, LLC
3101 MAGUIRE BLVD, SUITE 265
ORLANDO, FL 32803
OFFICE: (407) 531-5332
FAX: (407) 531-5331
MATTHEW J. WILSON, PE 71605
CERTIFICATE OF AUTHORIZATION: 30024

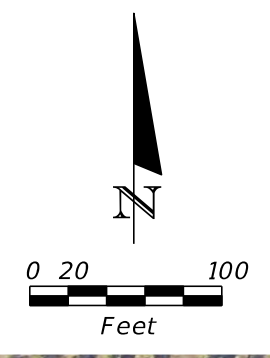
TMCLaptop 5/30/2018 5:08:41 PM

LAKE COUNTY
FLORIDA

DETOUR OVERVIEW

SHEET NO.
3

THE OFFICIAL RECORD OF THIS SHEET IS THE ELECTRONIC FILE DIGITALLY SIGNED AND SEALED UNDER RULE 61G15-23.004, F.A.C.



NOTE:
 PORTABLE CHANGEABLE MESSAGE
 SIGN TO BE PLACED ONE WEEK PRIOR
 AND REMAIN IN PLACE FOR DURATION OF MOT

SIGN LEGEND

MESSAGE 1	MESSAGE 2
GRASSY LAKE	DATE
ROAD CLOSED	TO
	DATE

REVISIONS			
DATE	DESCRIPTION	DATE	DESCRIPTION

TMC
 Traffic & Mobility Consultants

TRAFFIC & MOBILITY CONSULTANTS, LLC
 3101 MAGUIRE BLVD, SUITE 265
 ORLANDO, FL 32803
 OFFICE: (407) 531-5332
 FAX: (407) 531-5331
 MATTHEW J. WILSON, PE 71605
 CERTIFICATE OF AUTHORIZATION: 30024

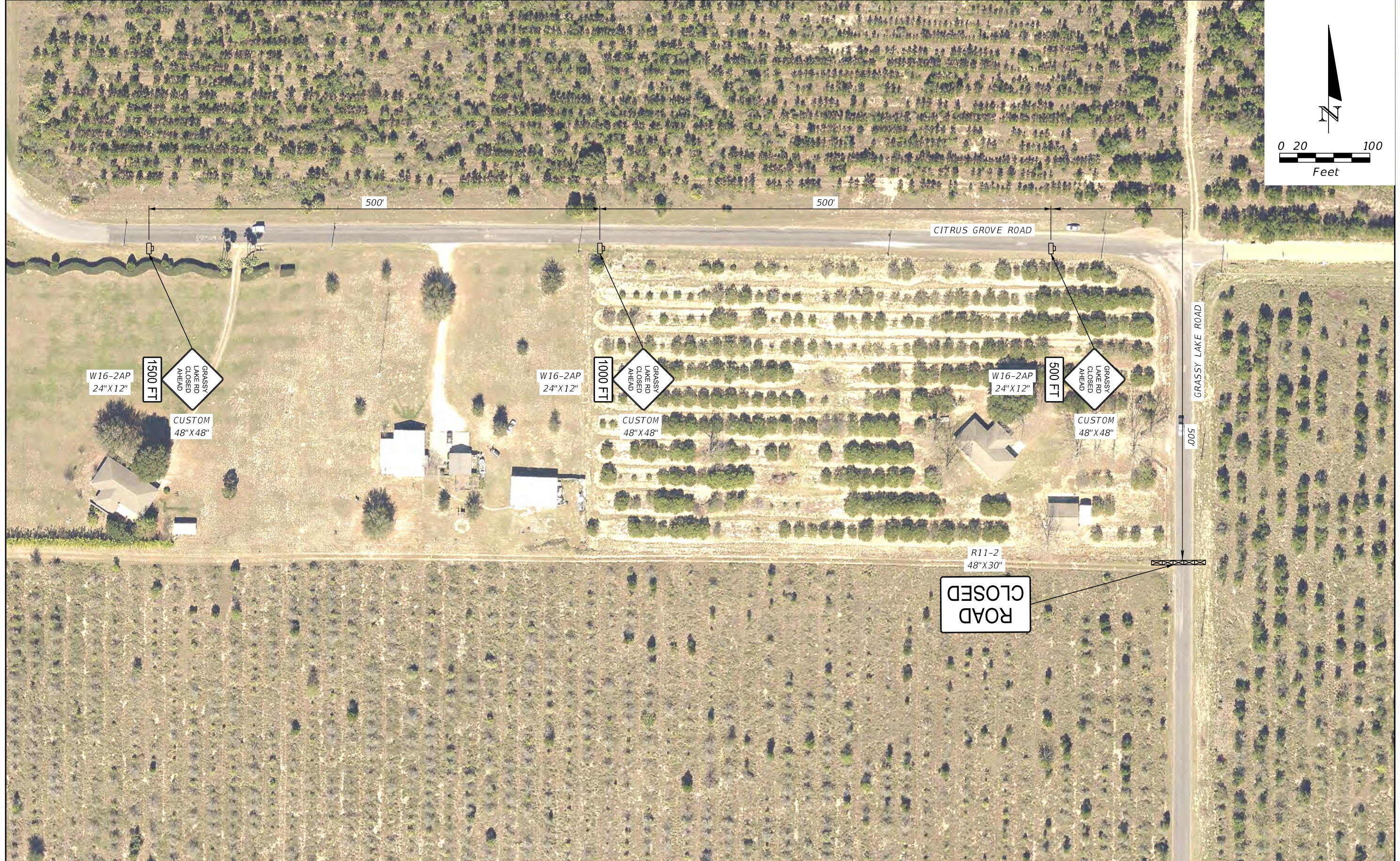
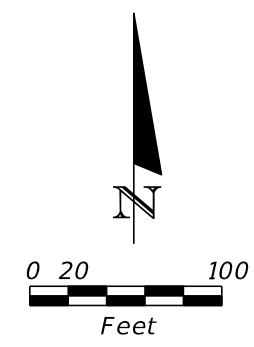
TMCLaptop 5/30/2018 12:02:27 AM T:\ProjectFiles\2018\18060 Grassy Lake Road MOT\roadway\TCPLRD101.dgn



DETOUR PLAN SHEET

SHEET NO.
 4

THE OFFICIAL RECORD OF THIS SHEET IS THE ELECTRONIC FILE DIGITALLY SIGNED AND SEALED UNDER RULE 61G15-23.004, F.A.C.



REVISIONS			
DATE	DESCRIPTION	DATE	DESCRIPTION

TMC
Traffic & Mobility Consultants

TRAFFIC & MOBILITY CONSULTANTS, LLC
3101 MAGUIRE BLVD, SUITE 265
ORLANDO, FL 32803
OFFICE: (407) 531-5332
FAX: (407) 531-5331
MATTHEW J. WILSON, PE 71605
CERTIFICATE OF AUTHORIZATION: 30024

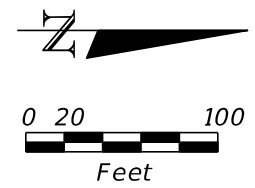
TMCLaptop 5/29/2018 11:23:21 PM

LAKE COUNTY
FLORIDA

DETOUR PLAN SHEET

SHEET NO.
5

THE OFFICIAL RECORD OF THIS SHEET IS THE ELECTRONIC FILE DIGITALLY SIGNED AND SEALED UNDER RULE 61G15-23.004, F.A.C.



CONTRACTOR TO CONSTRUCT 4' OF TEMPORARY PAVEMENT ON WEST SIDE OF GRASSY LAKE ROAD. 6" DOUBLE YELLOW TO BE APPLIED FOR ENTIRE LENGTH OF ROAD TRANSITION.

- NOTES:
1. CONTRACTOR TO INFORM RESIDENTS ALONG GRASSY LAKE ROAD TEMPORARY ROAD SHIFT TO UTILIZE SOUTHBOUND GRASSY LAKE ROAD FOR DETOUR
 2. CONTRACTOR TO MAINTAIN EXISTING SPEED LIMIT OF 40 MPH ON GRASSY LAKE ROAD.

REVISIONS			
DATE	DESCRIPTION	DATE	DESCRIPTION

TMC
Traffic & Mobility Consultants

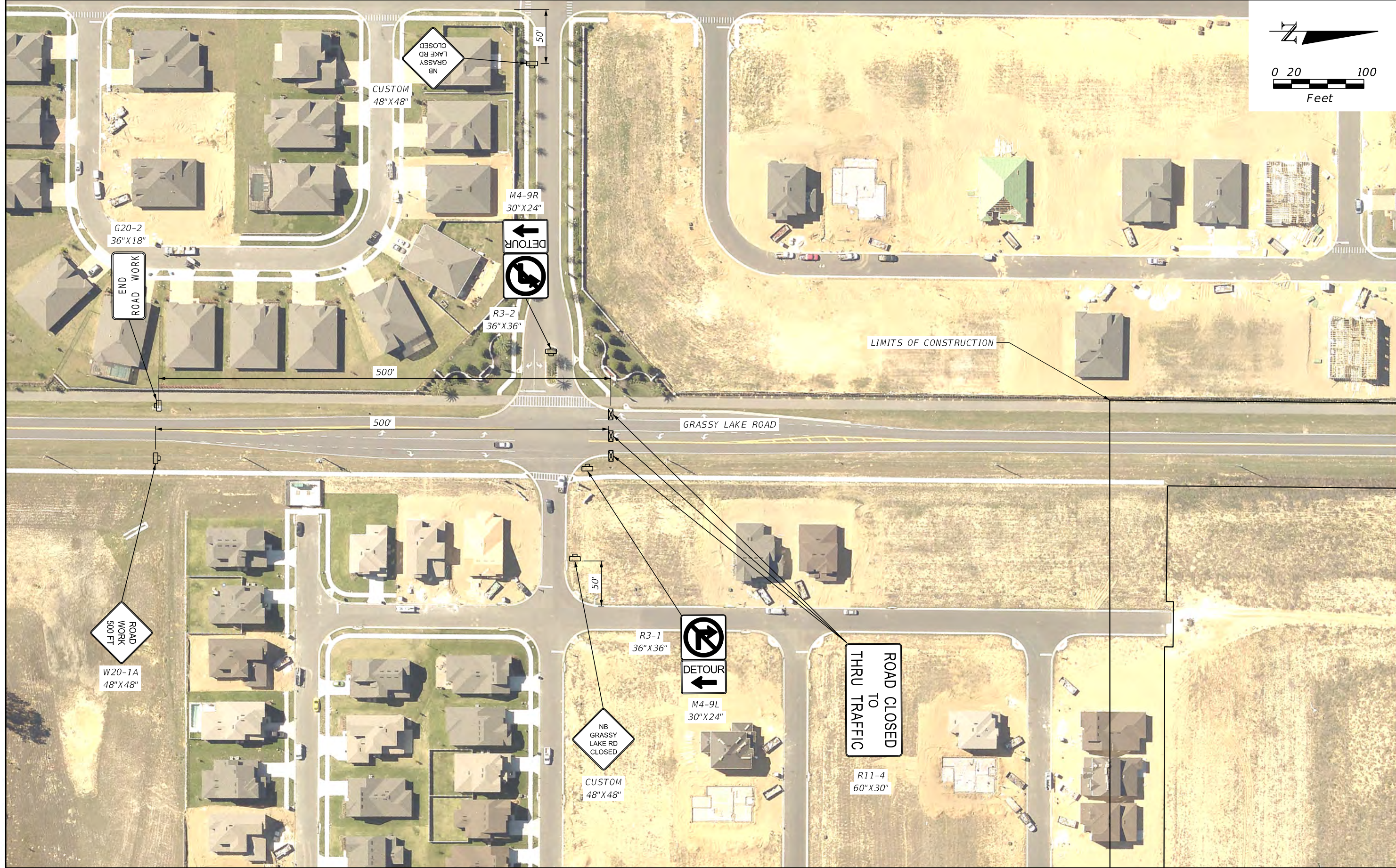
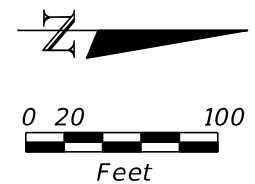
TRAFFIC & MOBILITY CONSULTANTS, LLC
3101 MAGUIRE BLVD, SUITE 265
ORLANDO, FL 32803
OFFICE: (407) 531-5332
FAX: (407) 531-5331
MATTHEW J. WILSON, PE 71605
CERTIFICATE OF AUTHORIZATION: 30024

LAKE COUNTY
FLORIDA

DETOUR PLAN SHEET

SHEET NO.
6

THE OFFICIAL RECORD OF THIS SHEET IS THE ELECTRONIC FILE DIGITALLY SIGNED AND SEALED UNDER RULE 61G15-23.004, F.A.C.



REVISIONS			
DATE	DESCRIPTION	DATE	DESCRIPTION

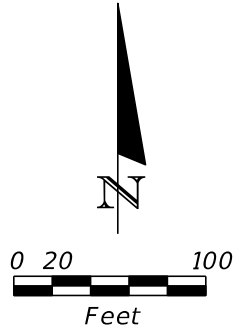
TMC
Traffic & Mobility Consultants, LLC
3101 MAGUIRE BLVD, SUITE 265
ORLANDO, FL 32803
OFFICE: (407) 531-5332
FAX: (407) 531-5331
MATTHEW J. WILSON, PE 71605
CERTIFICATE OF AUTHORIZATION: 30024
TMCLaptop 5/30/2018 4:56:32 PM



DETOUR PLAN SHEET

SHEET NO.
7

THE OFFICIAL RECORD OF THIS SHEET IS THE ELECTRONIC FILE DIGITALLY SIGNED AND SEALED UNDER RULE 61G15-23.004, F.A.C.



NOTE:
PORTABLE CHANGEABLE MESSAGE
SIGN TO BE PLACED ONE WEEK PRIOR
AND REMAIN IN PLACE FOR DURATION OF MOT

SIGN LEGEND

MESSAGE 1
GRASSY LAKE
ROAD CLOSED

MESSAGE 2
DATE
TO
DATE

REVISIONS			
DATE	DESCRIPTION	DATE	DESCRIPTION

TMC
Traffic & Mobility Consultants

TRAFFIC & MOBILITY CONSULTANTS, LLC
3101 MAGUIRE BLVD, SUITE 265
ORLANDO, FL 32803
OFFICE: (407) 531-5332
FAX: (407) 531-5331
MATTHEW J. WILSON, PE 71605
CERTIFICATE OF AUTHORIZATION: 30024

TMCLaptop 5/30/2018 10:12:45 AM

LAKE COUNTY
FLORIDA

DETOUR PLAN SHEET

THE OFFICIAL RECORD OF THIS SHEET IS THE ELECTRONIC FILE DIGITALLY SIGNED AND SEALED UNDER RULE 61G15-23.004, F.A.C.



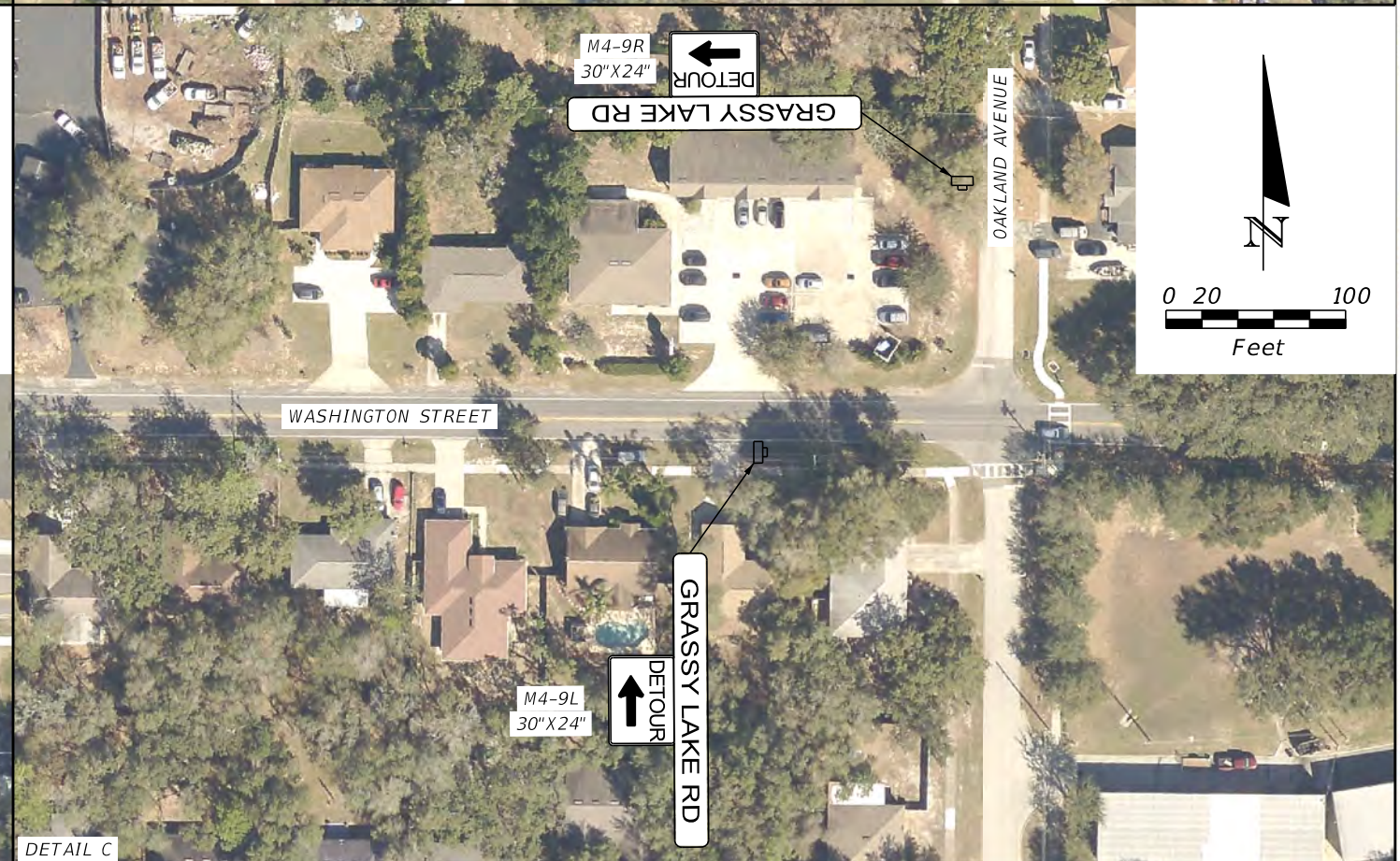
DETAIL A



DETAIL B



DETAIL D



DETAIL C

REVISIONS			
DATE	DESCRIPTION	DATE	DESCRIPTION

TMC
Traffic & Mobility Consultants

TRAFFIC & MOBILITY CONSULTANTS, LLC
3101 MAGUIRE BLVD, SUITE 265
ORLANDO, FL 32803
OFFICE: (407) 531-5332
FAX: (407) 531-5331
MATTHEW J. WILSON, PE 71605
CERTIFICATE OF AUTHORIZATION: 30024

TMCLaptop 5/29/2018 11:26:09 PM

LAKE COUNTY
FLORIDA

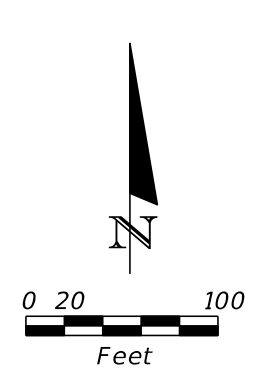
DETOUR PLAN SHEET

SHEET NO.
9

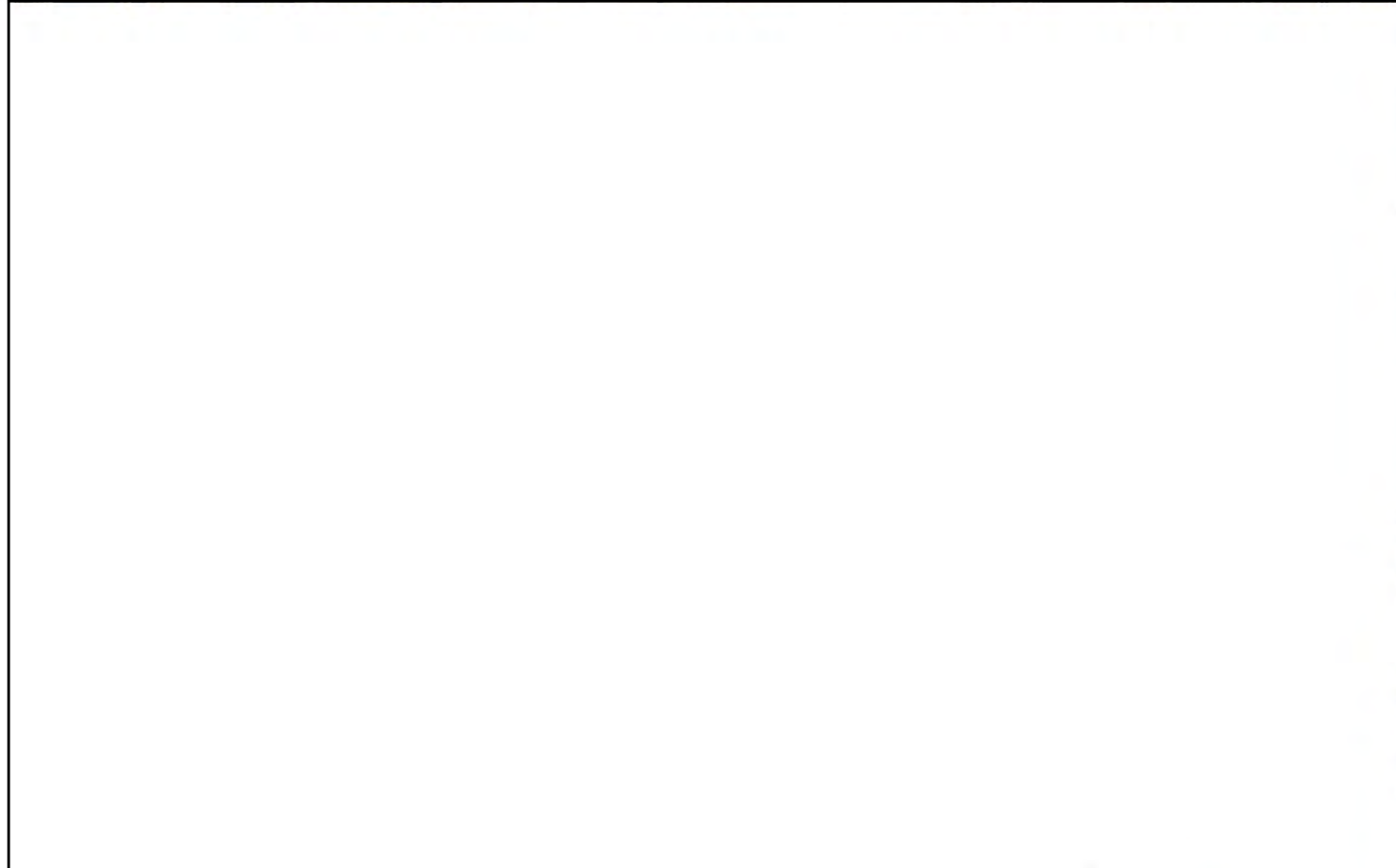
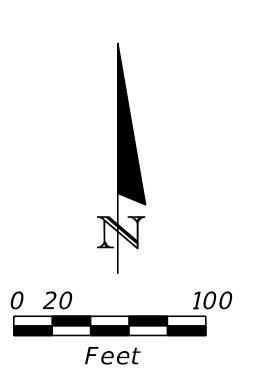
THE OFFICIAL RECORD OF THIS SHEET IS THE ELECTRONIC FILE DIGITALLY SIGNED AND SEALED UNDER RULE 61G15-23.004, F.A.C.



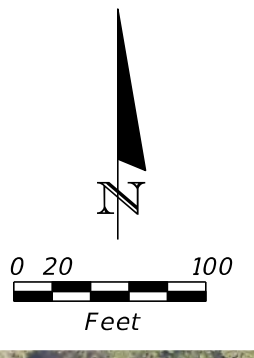
DETAIL A



DETAIL B



DETAIL C



REVISIONS			
DATE	DESCRIPTION	DATE	DESCRIPTION

TMC
Traffic & Mobility Consultants

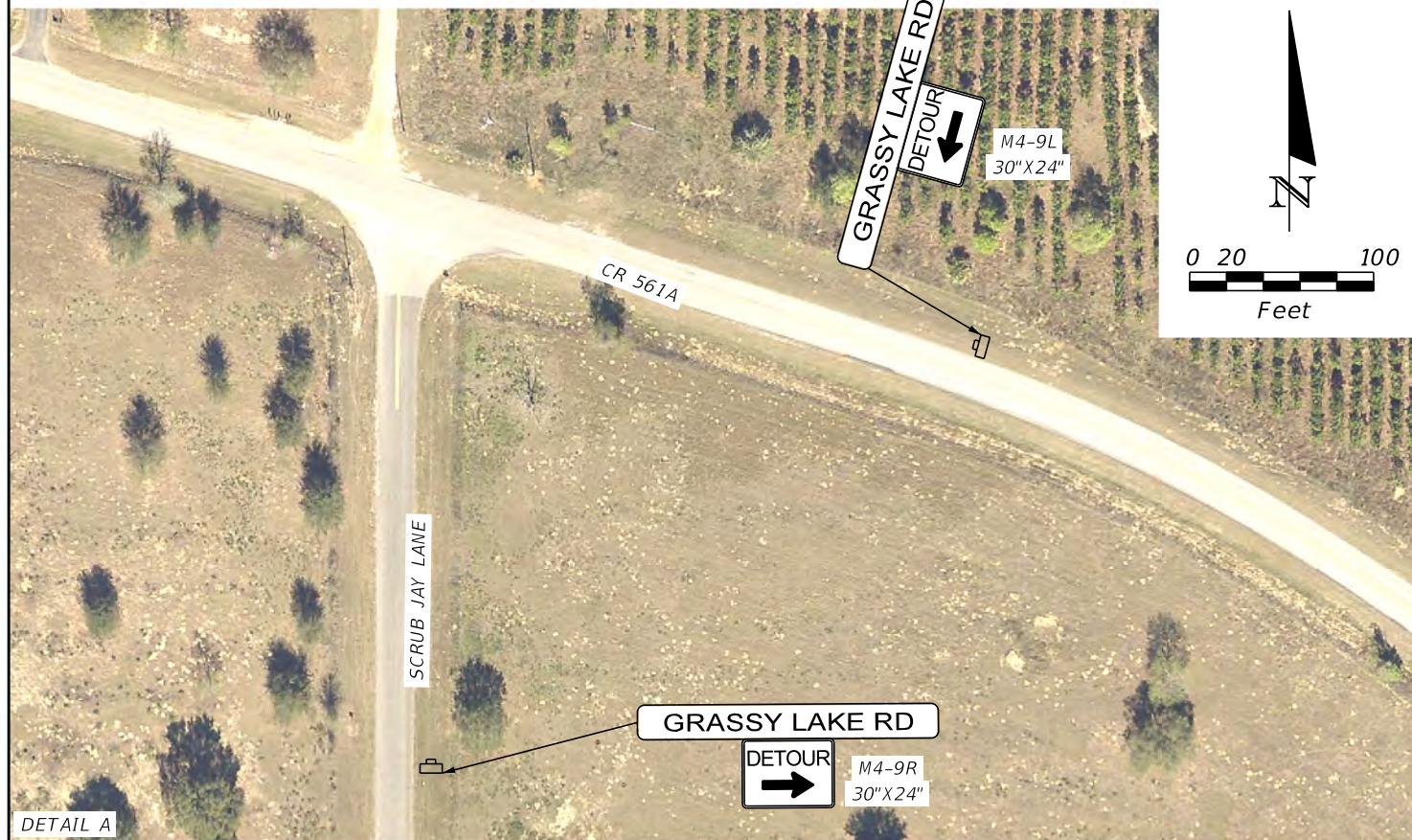
TRAFFIC & MOBILITY CONSULTANTS, LLC
3101 MAGUIRE BLVD, SUITE 265
ORLANDO, FL 32803
OFFICE: (407) 531-5332
FAX: (407) 531-5331
MATTHEW J. WILSON, PE 71605
CERTIFICATE OF AUTHORIZATION: 30024

LAKE COUNTY
FLORIDA

DETOUR PLAN SHEET

SHEET NO.
10

THE OFFICIAL RECORD OF THIS SHEET IS THE ELECTRONIC FILE DIGITALLY SIGNED AND SEALED UNDER RULE 61G15-23.004, F.A.C.



DETAIL A



DETAIL B



DETAIL C

REVISIONS			
DATE	DESCRIPTION	DATE	DESCRIPTION

TMC
Traffic & Mobility Consultants

TRAFFIC & MOBILITY CONSULTANTS, LLC
3101 MAGUIRE BLVD, SUITE 265
ORLANDO, FL 32803
OFFICE: (407) 531-5332
FAX: (407) 531-5331
MATTHEW J. WILSON, PE 71605
CERTIFICATE OF AUTHORIZATION: 30024

LAKE COUNTY
FLORIDA

DETOUR PLAN SHEET

SHEET NO.
11

THE OFFICIAL RECORD OF THIS SHEET IS THE ELECTRONIC FILE DIGITALLY SIGNED AND SEALED UNDER RULE 61G15-23.004, F.A.C.

