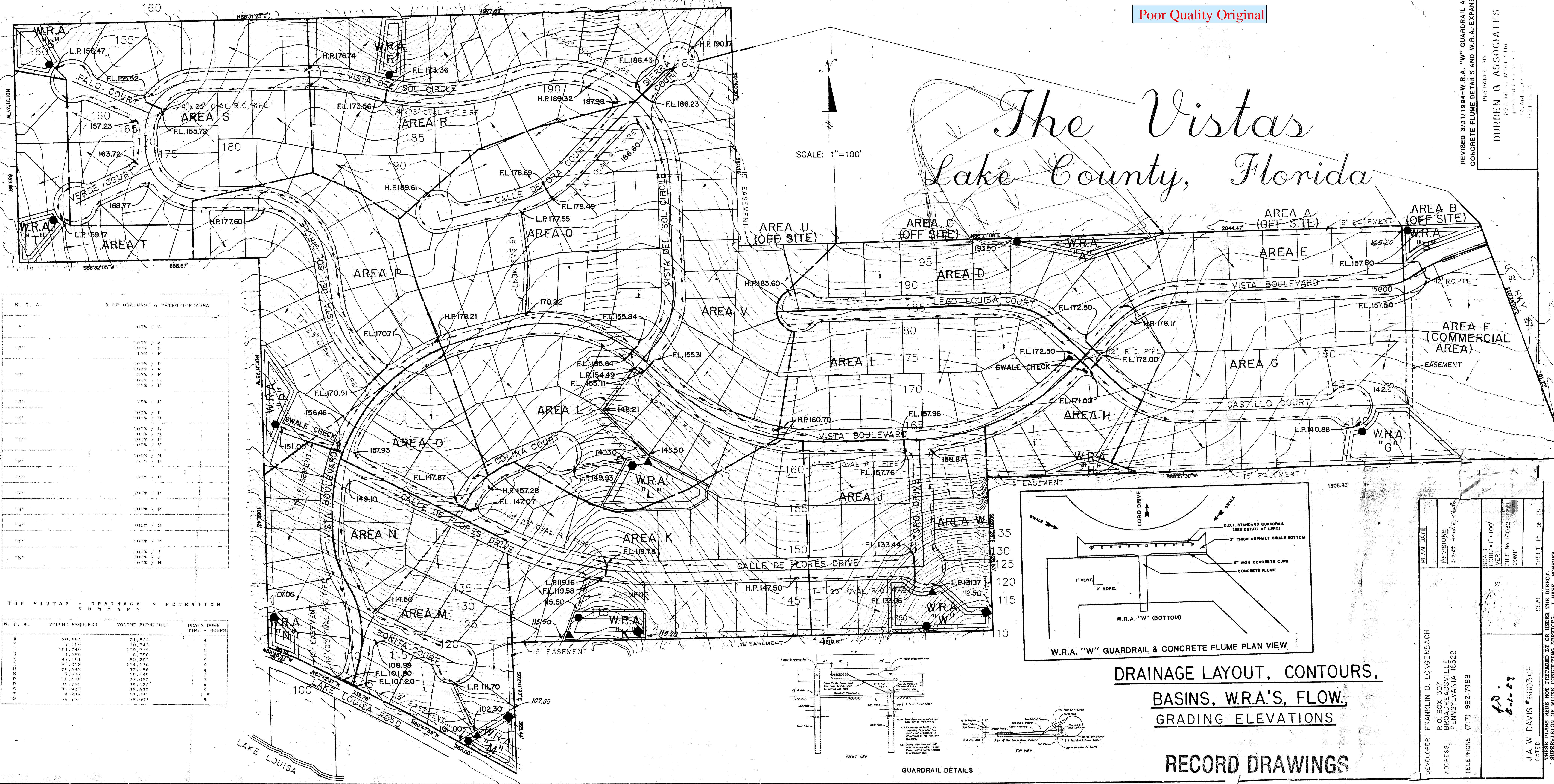


Poor Quality Original

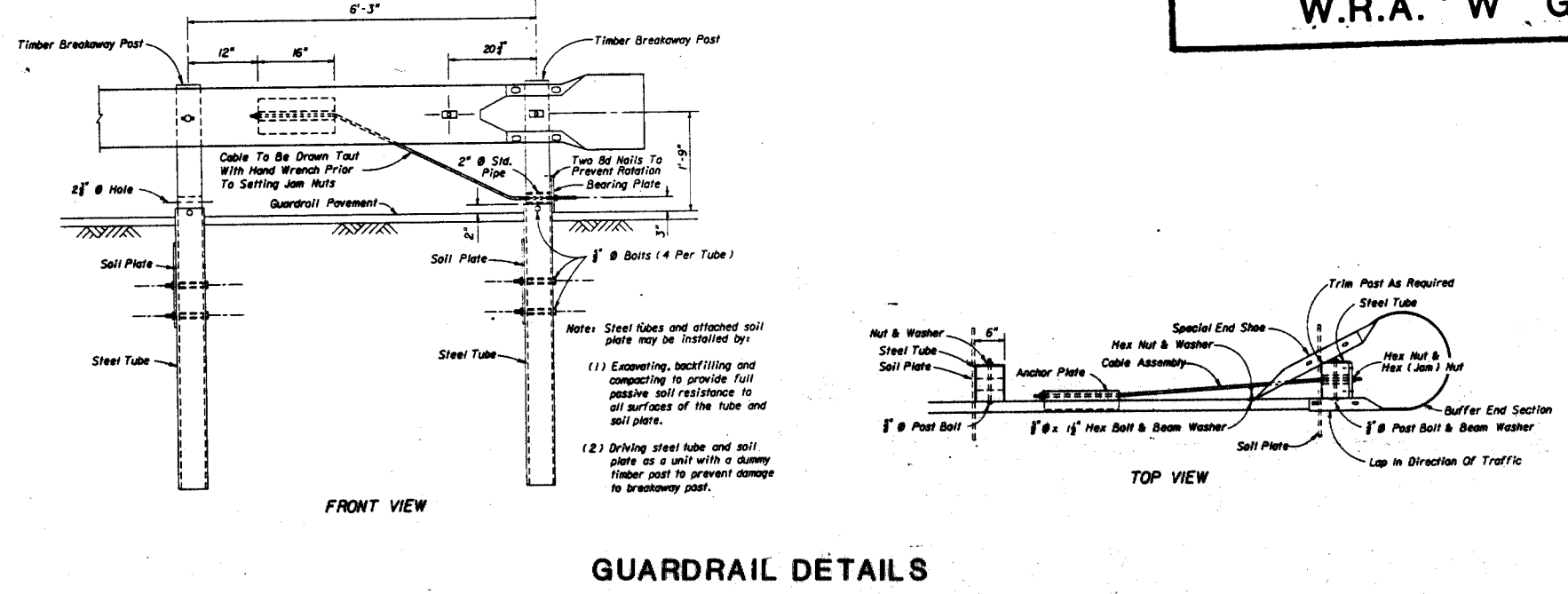
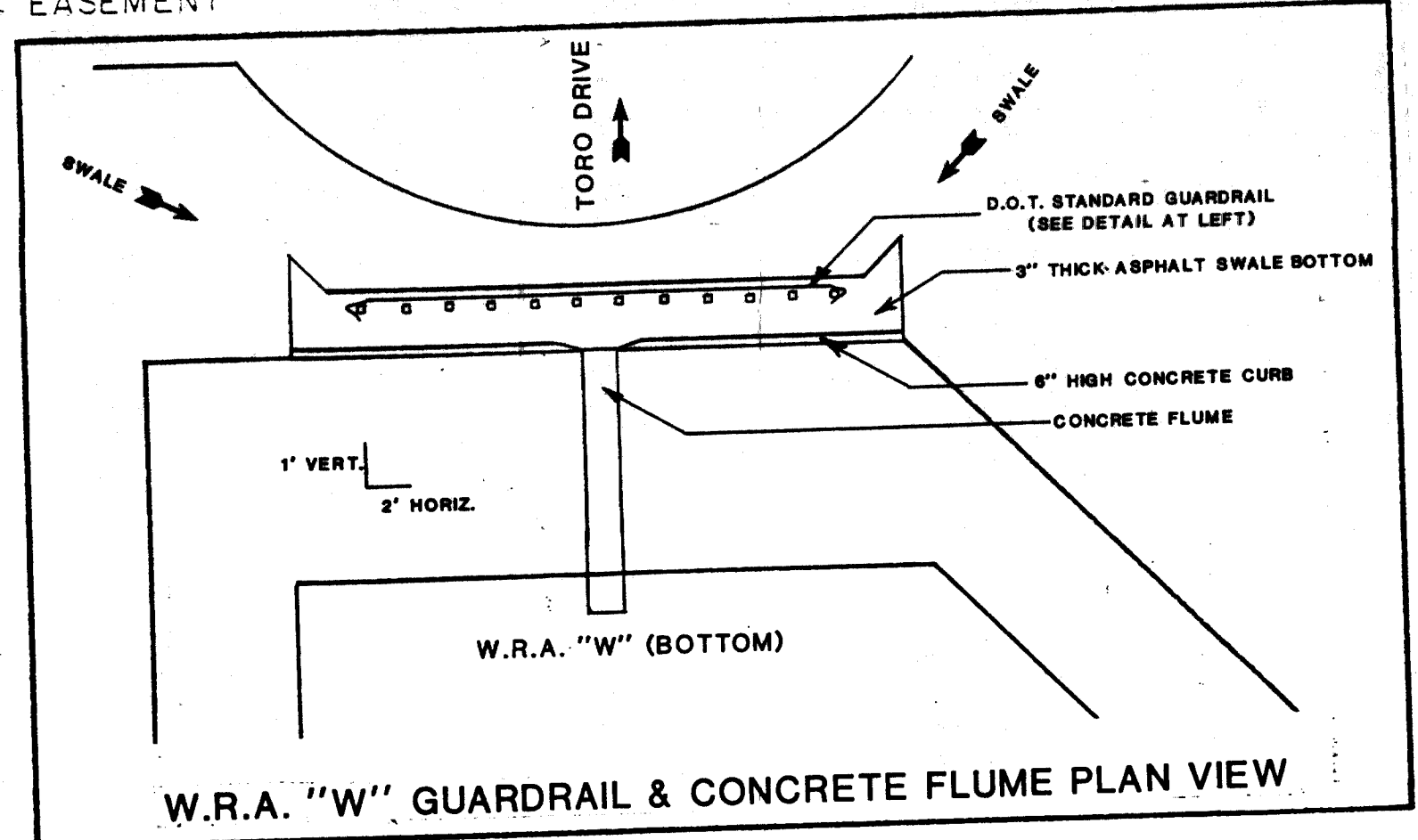
The Vistas Lake County, Florida



W. R. A.	% OF DRAINAGE & RETENTION/AREA
"A"	100% / C
"B"	100% / A 100% / B 15% / P
"C"	100% / D 100% / E 80% / F 100% / H 24% / H
"D"	75% / H
"E"	100% / K 100% / L 100% / M 100% / V
"F"	100% / N
"G"	100% / P
"H"	100% / R
"I"	100% / S
"J"	100% / T
"K"	100% / U 100% / W

THE VISTAS - DRAINAGE & RETENTION SUMMARY

W. R. A.	VOLUME REQUIRED	VOLUME FURNISHED	DRAIN DOWN TIME - HOURS
A	20,694	21,532	4
B	7,156	10,943	3
C	101,240	109,315	6
D	4,595	5,756	3
E	47,161	40,263	6
F	93,252	114,176	6
G	26,449	39,486	4
H	7,637	27,052	3
I	10,469	15,445	4
J	35,750	36,420	4
K	31,920	35,530	4
L	4,238	13,391	1.5
M	54,766	56,607	5



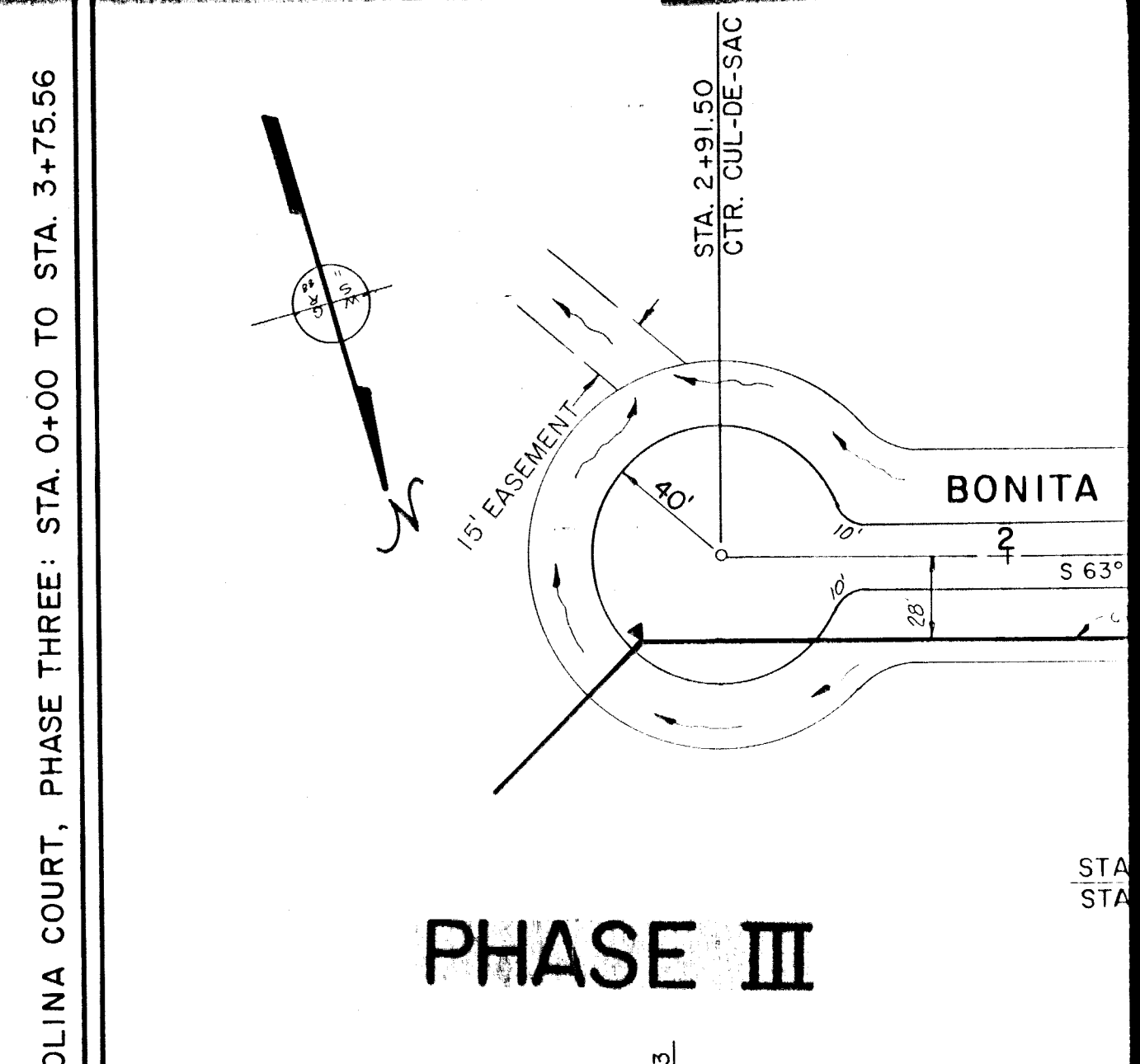
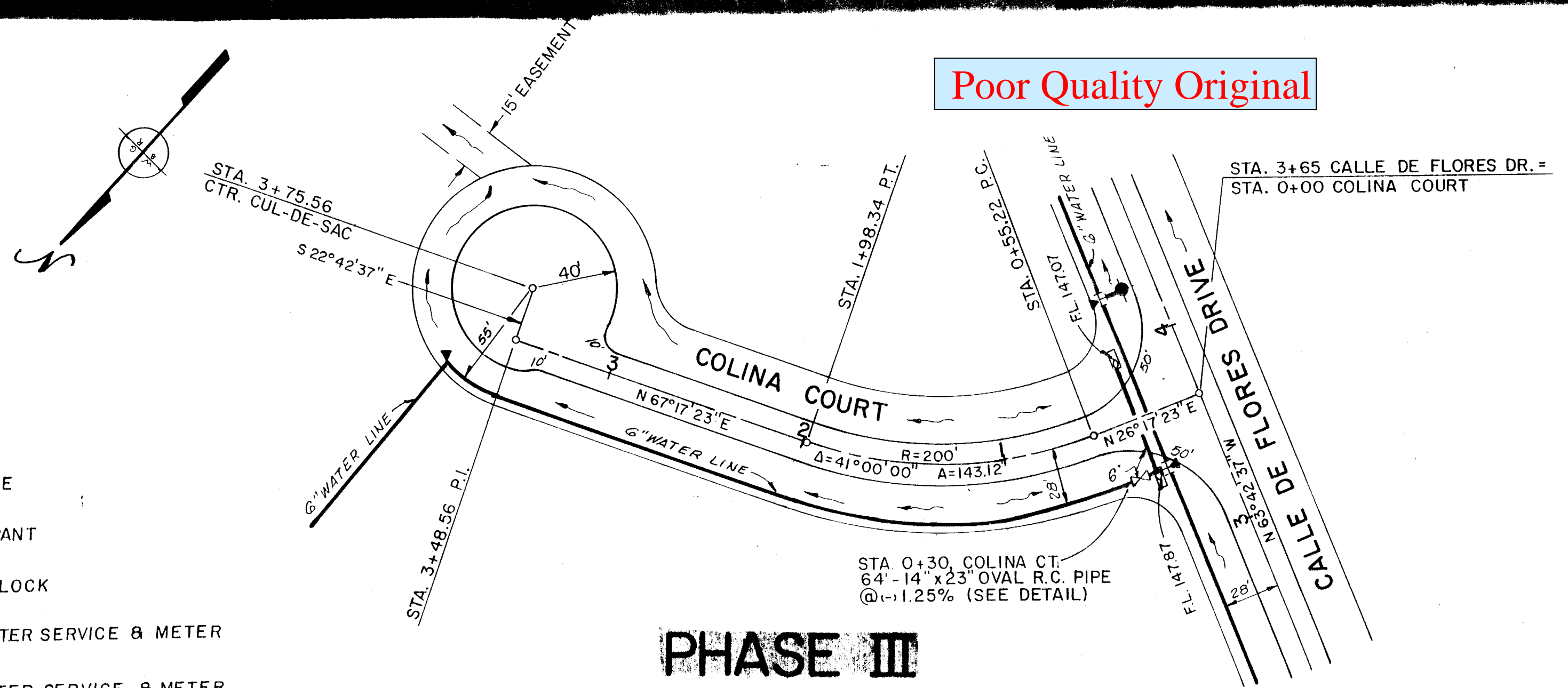
**DRAINAGE LAYOUT, CONTOURS,
BASINS, W.R.A.'S, FLOW,
GRADING ELEVATIONS**

RECORD DRAWINGS

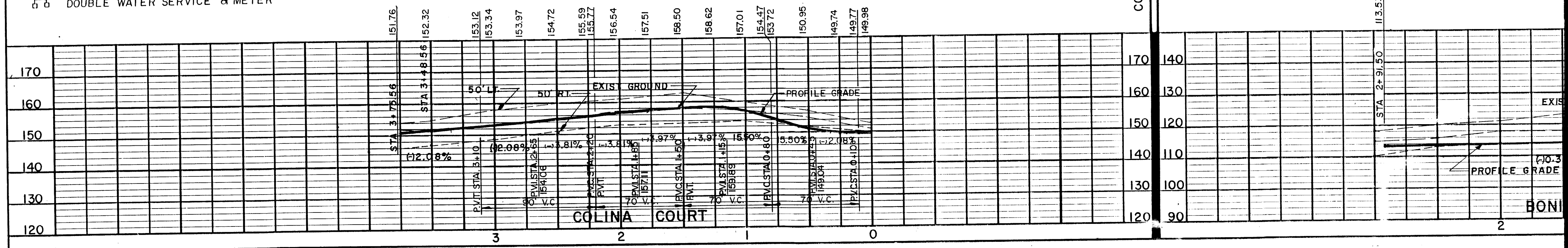
PLAN DATE	REVISIONS	SCALE	HORIZ. = 1" = 100'	VERT. =	FILE NO. 16032	COMP	SHEET 15 OF 15
DEVELOPER	ADDRESS	TELEPHONE	J. W. DAVIS #66030E DATED: 8-1-87				
FRANKLIN D. LONGENBACH P.O. BOX 307 BROADHEADSVILLE PENNSYLVANIA 16322		THESE PLANS WERE NOT PREPARED BY OR UNDER THE DIRECT SUPERVISION OF WICKS CONSULTING SERVICES, I HAVE, HOWEVER, OBSERVED THE CONSTRUCTION AND FIND THAT IT HAS BEEN COMPLETED IN SUBSTANTIAL COMPLIANCE WITH THESE APPROVED PLANS.					

REVISED 3/31/1994-W.R.A. "W" GUARDRAIL AND CONCRETE FLUME DETAILS AND W.R.A. EXPANSION.
 PREPARED BY
DURDEN & ASSOCIATES
 200 WEST BAY STREET
 TAMPA, FLORIDA 33601
 TEL: 813-281-1111

- ⊗ GATE VALVE
- FIRE HYDRANT
- ▲ THRUST BLOCK
- ⊥ SINGLE WATER SERVICE & METER
- ⊥ DOUBLE WATER SERVICE & METER



COLINA COURT, PHASE THREE: STA. 0+00 TO STA. 3+75.56



PREPARED BY:
DURDEN & ASSOCIATES
 220 WEST MAIN STREET
 POST OFFICE BOX 1245
 TAVARES, FLORIDA 32778
 TELEPHONE (904) 343-5001

REVISIONS:

DEVELOPER: FRANKLIN D. LONGENBACH
 ADDRESS: P.O. BOX 307, BRADHEADS VILLAGE, PENNSYLVANIA, 18322
 TELEPHONE (717) 992-7488

PLAN DATE: 12-1-88
 SCALE: HORIZ. 1" = 50'
 VERT. 1" = 10'
 FILE NO. 16032
 COMP. 98/8

SHEET 8 OF 15

SEAL

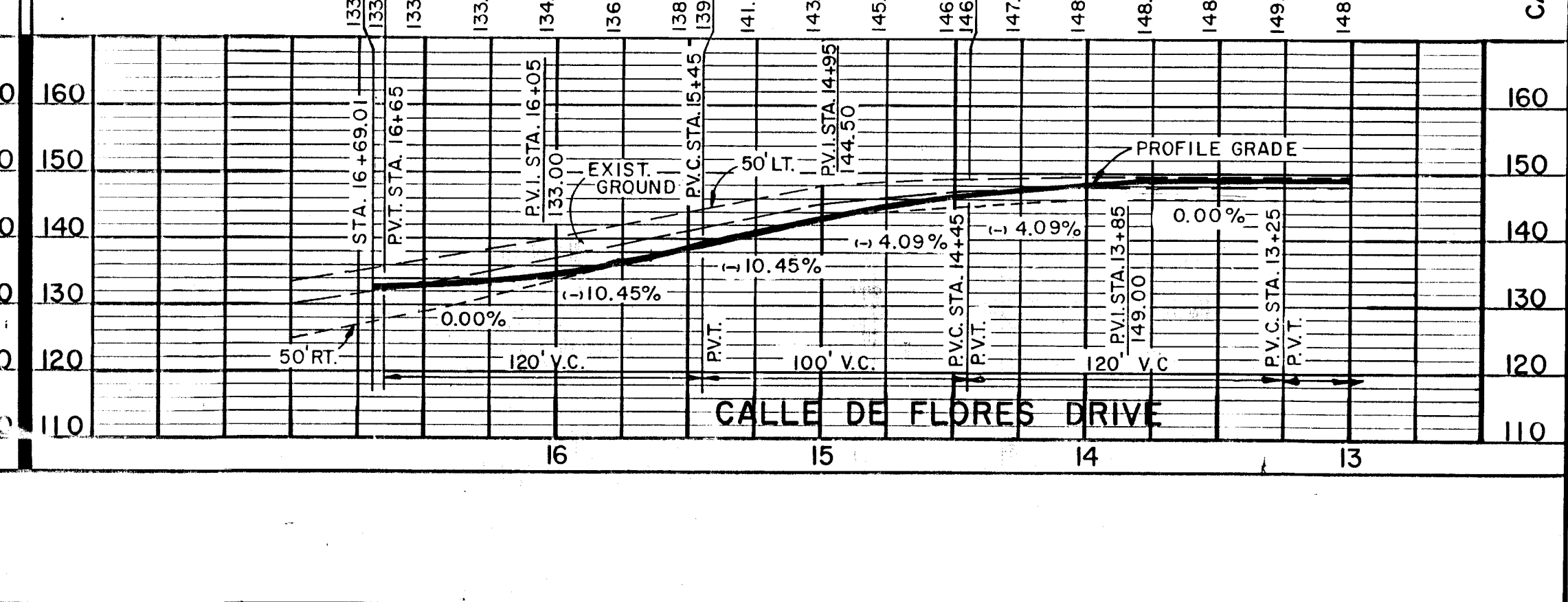
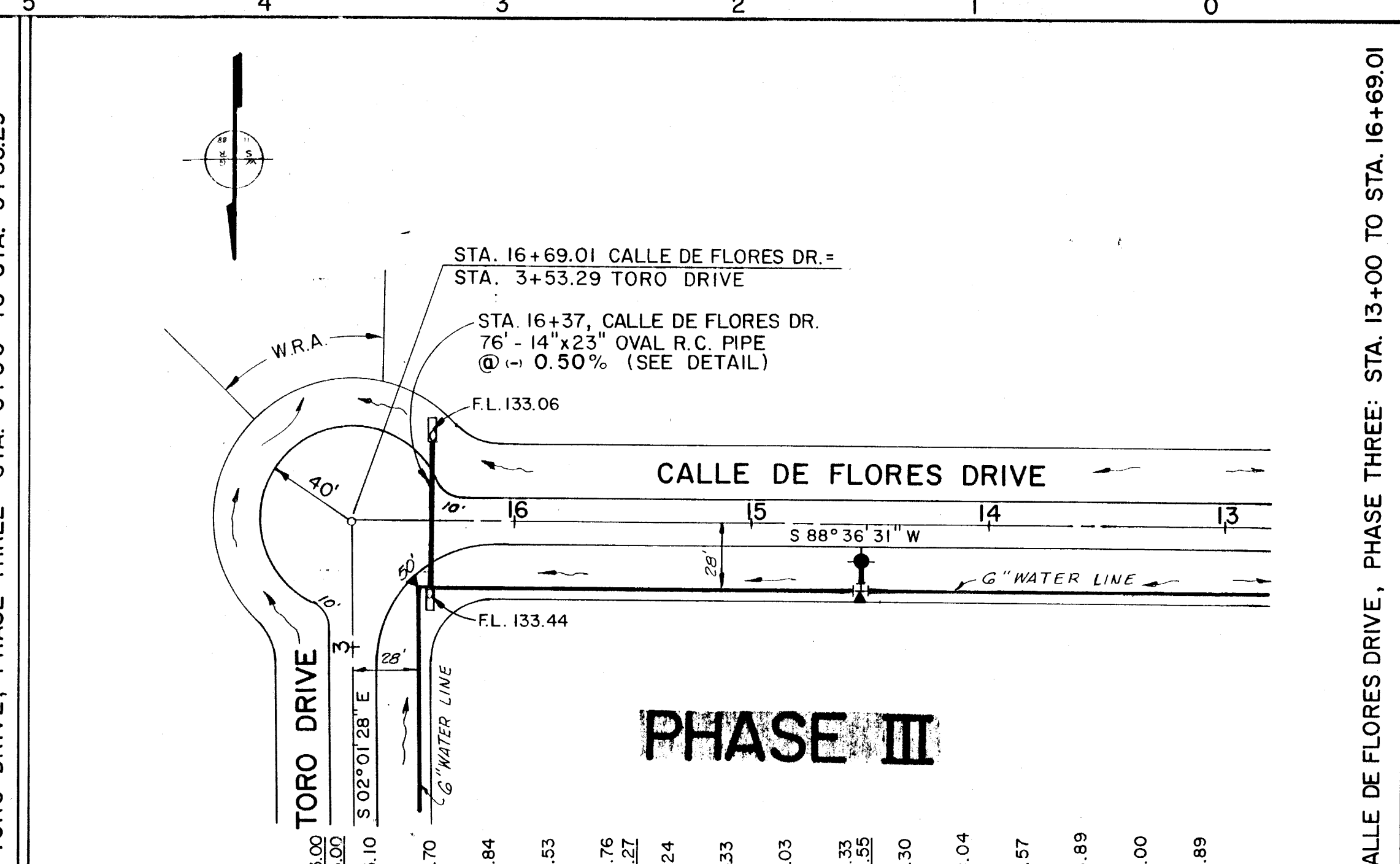
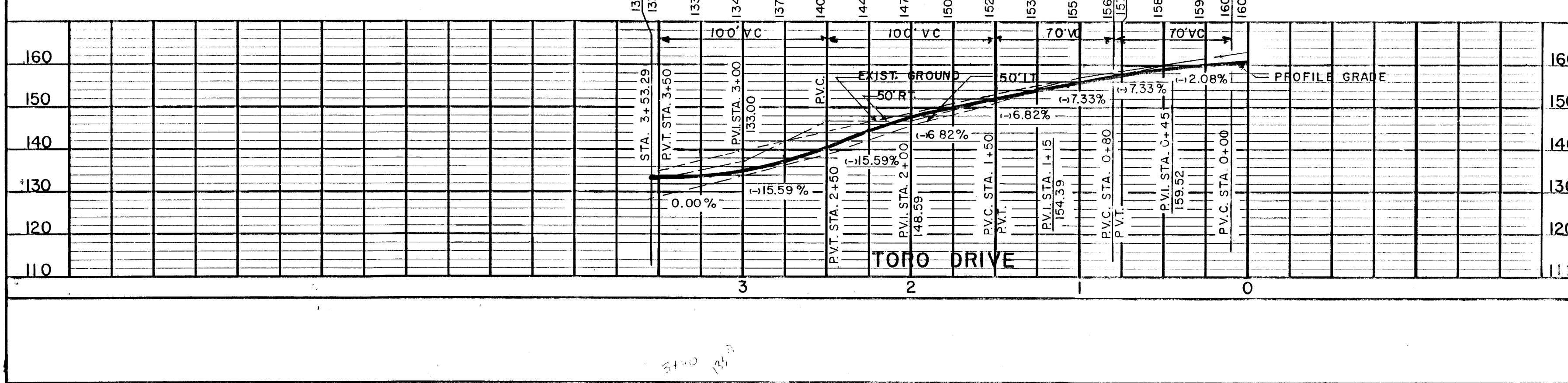
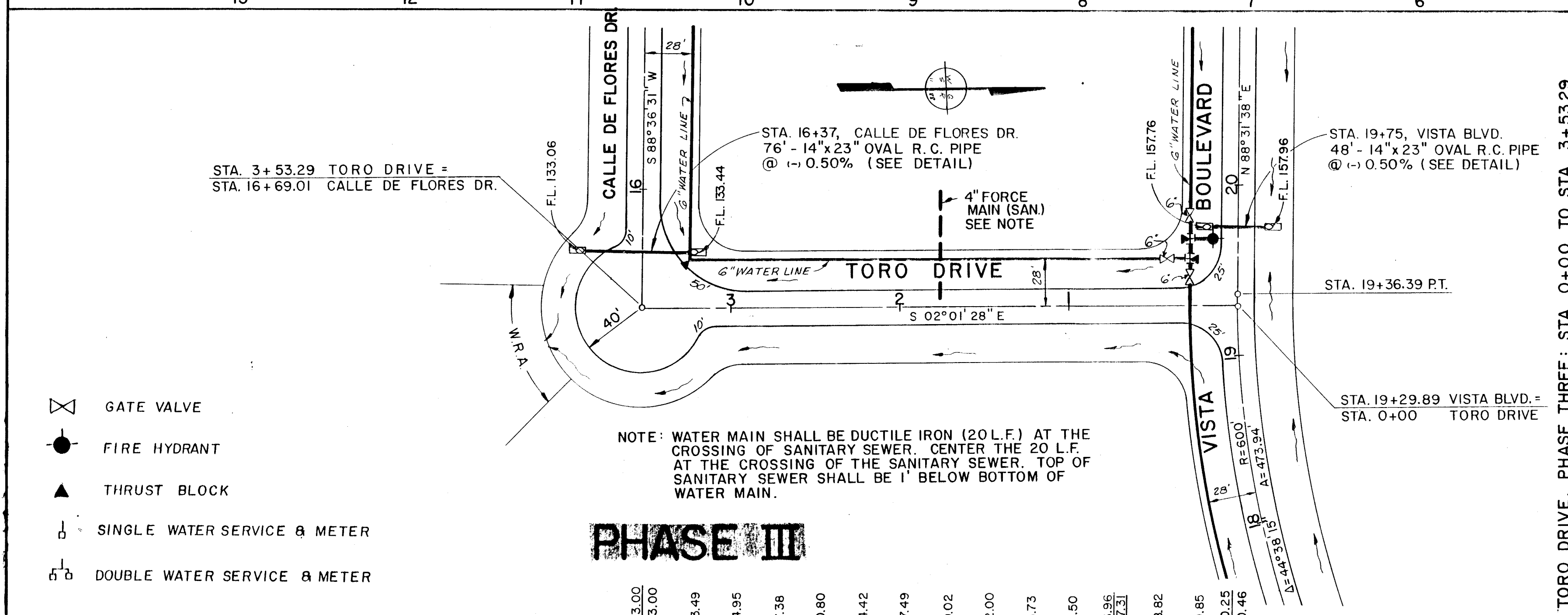
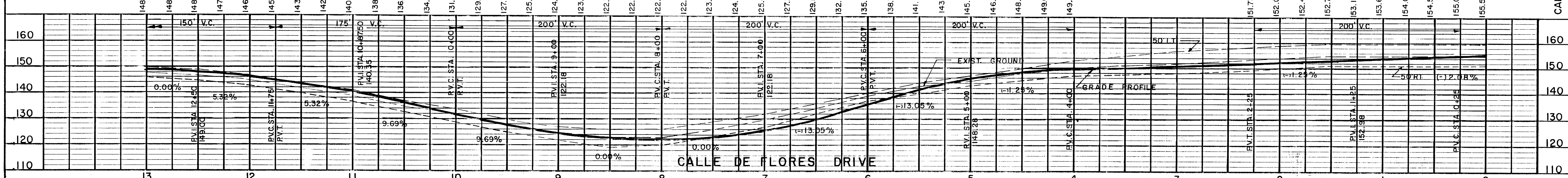
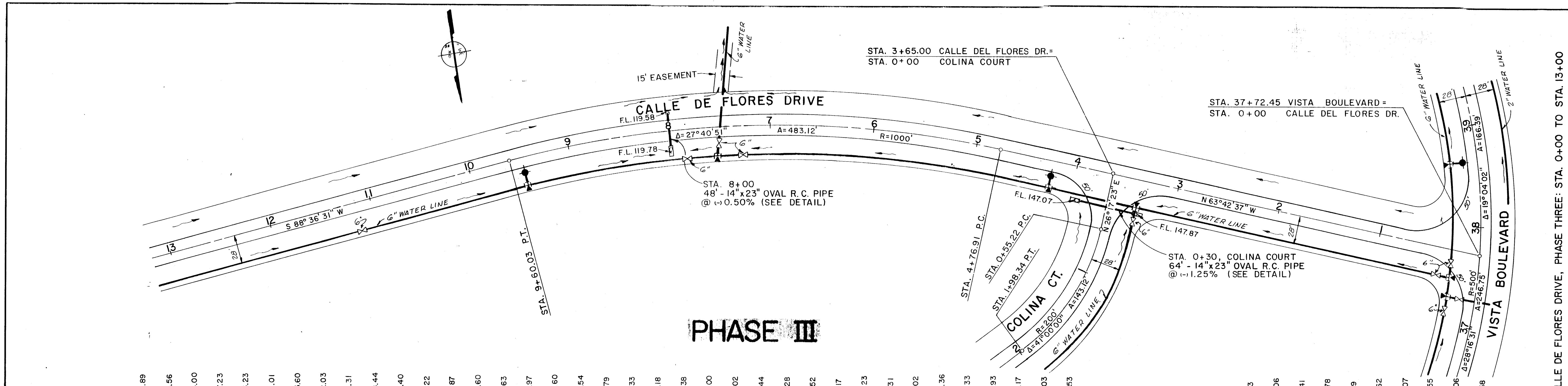
40
 8-1-89

J.A. W. DAVIS #6603CE
 DATED: NOVEMBER 23, 1988

RECORD DRAWINGS

THESE PLANS WERE NOT PREPARED BY OR UNDER THE DIRECT SUPERVISION OF WICKS CONSULTING SERVICES. I HAVE, HOWEVER, OBSERVED THE CONSTRUCTION AND FIND THAT IT HAS BEEN COMPLETED IN SUBSTANTIAL COMPLIANCE WITH THESE APPROVED PLANS.

Kenneth R. Wicks
 KENNETH R. WICKS, P.E.



- ⊗ GATE VALVE
- FIRE HYDRANT
- ▲ THRUST BLOCK
- SINGLE WATER SERVICE & METER
- ⊕ DOUBLE WATER SERVICE & METER

NOTE: WATER MAIN SHALL BE DUCTILE IRON (20 L.F.) AT THE CROSSING OF SANITARY SEWER. CENTER THE 20 L.F. AT THE CROSSING OF THE SANITARY SEWER. TOP OF SANITARY SEWER SHALL BE 1' BELOW BOTTOM OF WATER MAIN.

PREPARED BY:
DURDEN & ASSOCIATES
 220 WEST MAIN STREET
 TAVARES, FLORIDA 32778
 TELEPHONE: (904) 343-5001

DEVELOPER: FRANKLIN D. LOENBACH
 ADDRESS: P.O. BOX 307, BROADHEADS VILLE, PENNSYLVANIA, 18322
 TELEPHONE (717) 992-7488

REVISIONS:
 4/10/88 DUCTILE IRON WATER LINE NOTE-TORO DR.
 PLAN DATE: 12-1-88
 SCALE: HORIZ = 1" = 50'
 VERT = 1" = 10'
 FILE NO. 16032
 COMP.

DEVELOPER: FRANKLIN D. LOENBACH
 ADDRESS: P.O. BOX 307, BROADHEADS VILLE, PENNSYLVANIA, 18322
 TELEPHONE (717) 992-7488

J.A.W. DAVIS #6603CE
 DATED: NOVEMBER 23, 1988

SEAL
 SHEET 9 OF 15
 THESE PLANS WERE NOT PREPARED BY OR UNDER THE DIRECT SUPERVISION OF WICKS CONSULTING SERVICES. I HAVE, HOWEVER, OBSERVED THE CONSTRUCTION AND FIND THAT IT HAS BEEN COMPLETED IN SUBSTANTIAL COMPLIANCE WITH THESE APPROVED PLANS.
 KENNETH R. WICKS, P.E.

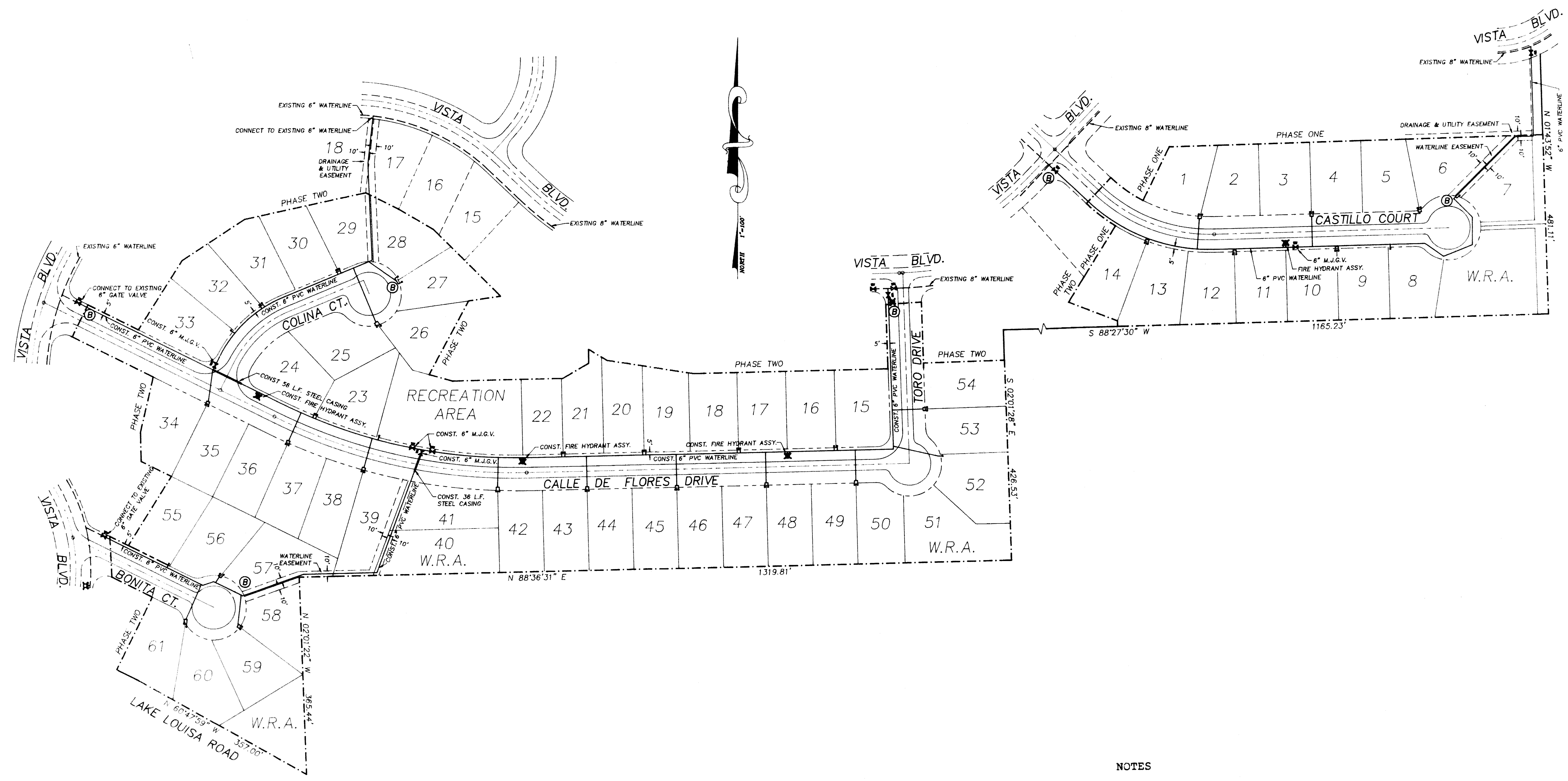
RECORD DRAWINGS

FRANKLIN D. LONGENBACK
 P.O. BOX 307
 BROADHEADSVILLE, PA. 18322
 (717) 992-7488

WATERLINE PLAN
 THE VISTAS
 PHASE 3

Drawn: JS
 Checked: TW
 Date: 4-12-94
 Scale: 1"=100'
 File No. 12093-WL

Sheet:
 7/1/94



NOTES
 PHASE 3 -- LOTS 1 THRU 61
 LOT 40 & 51 ARE USED AS STORMWATER RETENTION
 TOTAL LOTS SERVED WITH WATER = 59
 DESIGNATES BACTERIOLOGICAL SAMPLING LOCATIONS.
 LOCATIONS ARE BASED UPON ORIGINAL PERMIT REQUIREMENTS
 (NEAR LOTS 7, 14, 27, 34, 54, & 58)
 ORIGINAL PERMIT FOR PROJECT -- WC35-159609
 CONNECTIONS TO EXISTING WATER MAINS TO BE WET TAP WITH GATE
 VALVE OF APPROPRIATE SIZE.
 STEEL CASING TO BE 14" FOR 6" MAINS AND 6" FOR 2" MAINS