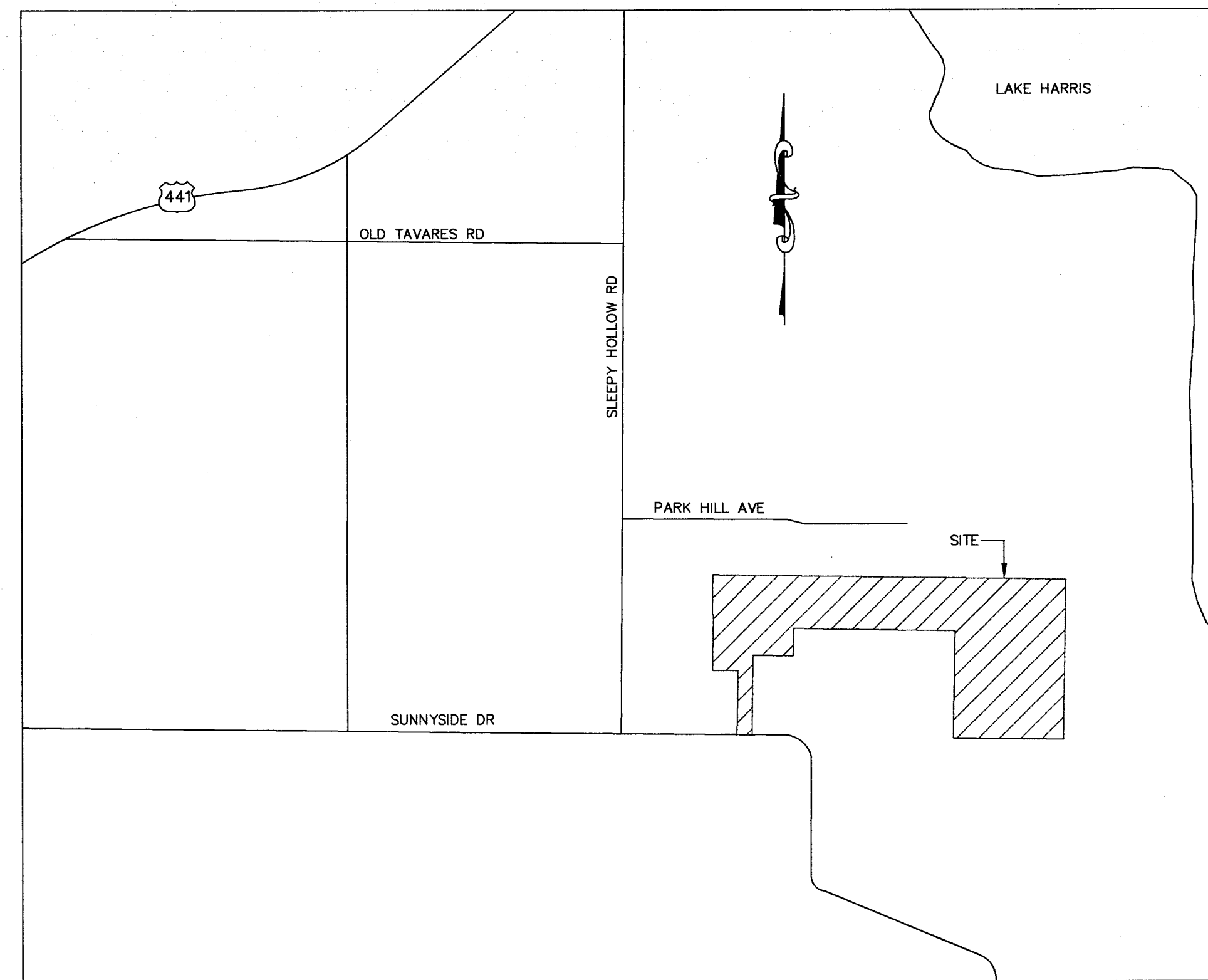


CONSTRUCTION ASBUILTS FOR **PARKHILL** **PHASE 2** PROFESSIONAL DIRT SERVICE



INDEX OF SHEETS

1. COVER SHEET
2. SANITARY SEWER ASBUILTS
3. STORM SEWER ASBUILTS
4. WATER DISTRIBUTION ASBUILTS
5. ROADWAY ASBUILTS
6. POND ASBUILTS

SURVEY NOTES

1. THIS SURVEY IS NOT VALID WITHOUT THE SIGNATURE AND THE ORIGINAL RAISED SEAL OF A FLORIDA LICENSED SURVEYOR AND MAPPER.
2. THIS SURVEY IS AN ASBUILT SURVEY FOR THE PURPOSE OF DELINEATING FIELD ASBUILT LOCATIONS AND ELEVATIONS OF THE CONSTRUCTED SANITARY SEWER, STORM SEWER, FORCE MAIN, WATER DISTRIBUTION, ROADWAYS, AND PONDS. THIS IS NOT A BOUNDARY SURVEY.
3. THIS SURVEY WAS COMPLETED IN THE FIELD ON OCTOBER 19, 2006.
4. ELEVATIONS SHOWN HEREON ARE BASED ON THE NATIONAL GEODETIC VERTICAL DATUM OF 1988 AND ARE BASED ON SITE BENCHMARKS AS SHOWN ON THE APPROVED ENGINEERING DESIGN PLANS AND PROVIDED BY THE CLIENT.

SURVEYORS CERTIFICATE

THE ASBUILT SURVEY SHOWN HEREON WAS PERFORMED IN ACCORDANCE WITH THE MINIMUM TECHNICAL STANDARDS AS SET FORTH BY THE FLORIDA BOARD OF SURVEYORS AND MAPPERS IN CHAPTER 61G17-6 FLORIDA ADMINISTRATIVE CODE PURSUANT TO SECTION 472.027 OF THE FLORIDA STATUTES.

Mark S. Caulfield
 MARK S. CAULFIELD, P.S.M.
 PROFESSIONAL SURVEYOR AND MAPPER
 FLORIDA REGISTRATION NO. 4606

12/18/06
 DATE:

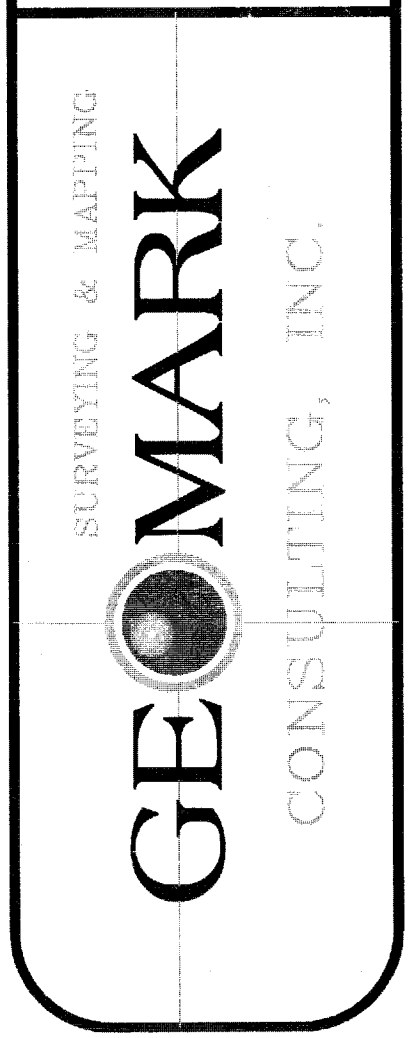


405 West Central Parkway,
 Suite 1010
 Altamonte Springs, Florida 32714
 Phone: (407) 869-9989
 Fax: (407) 869-9937
 Website: www.geomarkinc.com
 Licensed Business 7506

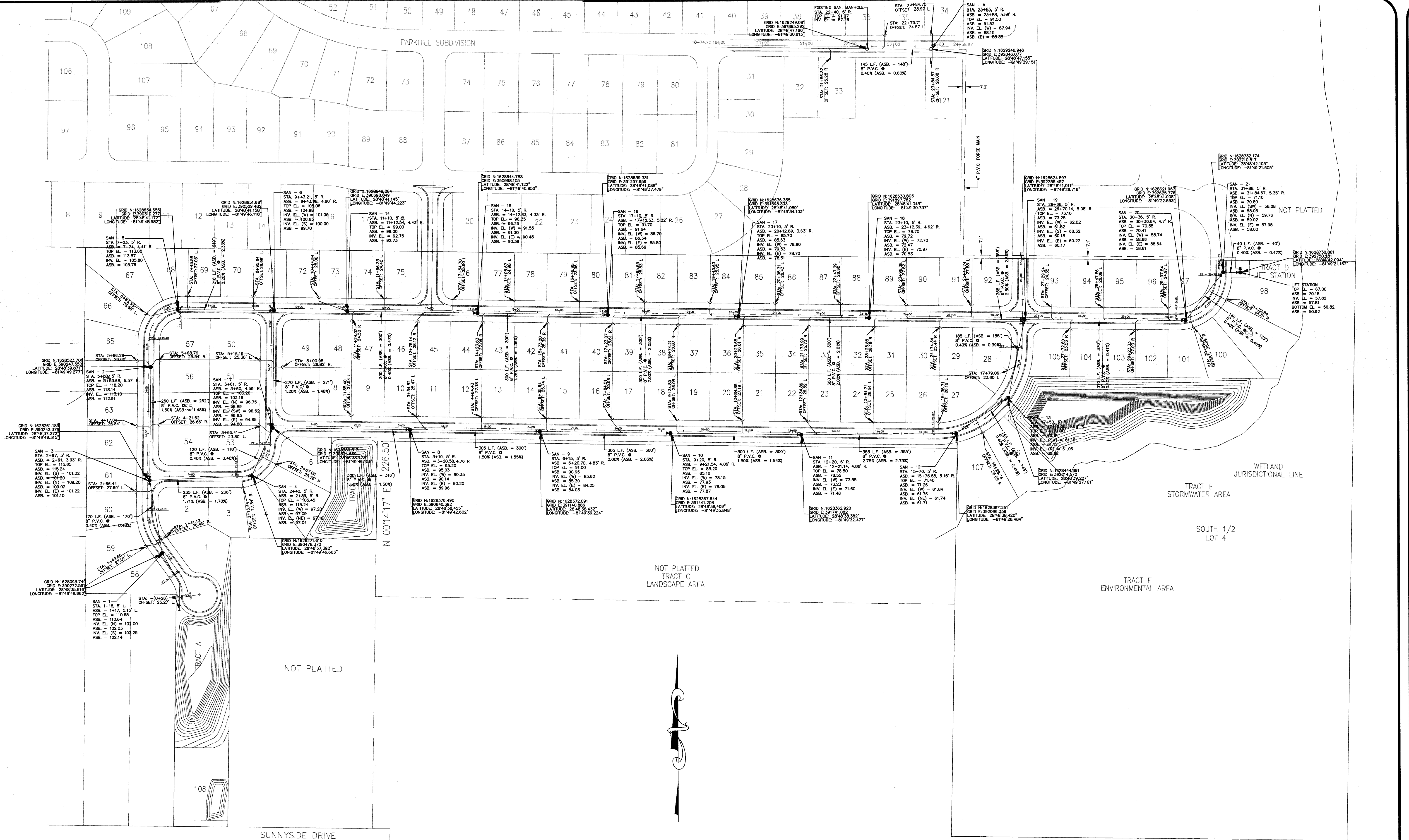
Drawn	Checked	Date	Revisions

Drawn: S.M.C.
 Date: October 24, 2006
 Checked: M.S.C.
 Date: October 24, 2006
 Crew: C.P., C.M.
 Date: October 19, 2006
 Sheet: 1 of 6
 File: 06552cover.dwg

Asbuilt Survey
 Prepared for:
 Professional Dirt Service
 of:
 Parkhill Phase 2
 Lake County, Florida



51



405 West Central Parkway,
 Suite 1010
 Altamonte Springs, Florida 32714
 Phone: (407) 869-9989
 Fax: (407) 869-9337
 Website: www.geomarkinc.com
 Licensed Business 7506

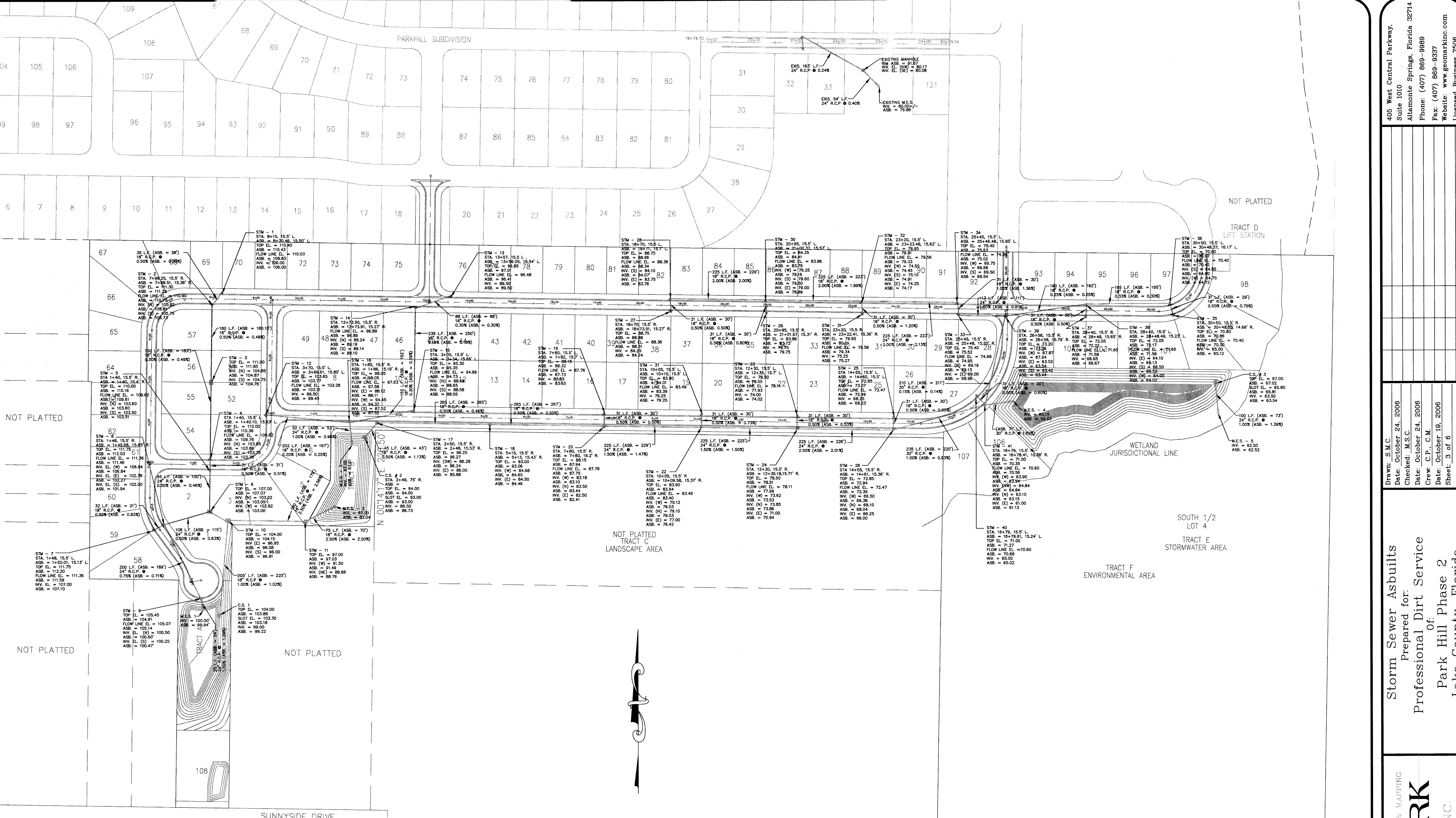
Revisions	Drawn	Checked	Date

Drawn: S.M.C.
 Date: October 24, 2006
 Checked: M.S.C.
 Date: October 24, 2008
 Crew: C.P., C.M.
 Date: October 19, 2006
 Sheet: 2 of 6
 File: 06552SANASB.DWG

Sanitary Sewer Asbuilt
 Prepared for:
 Professional Dirt Service
 of
 Parkhill Phase 2
 Lake County, Florida

SURVEYING & MAPPING

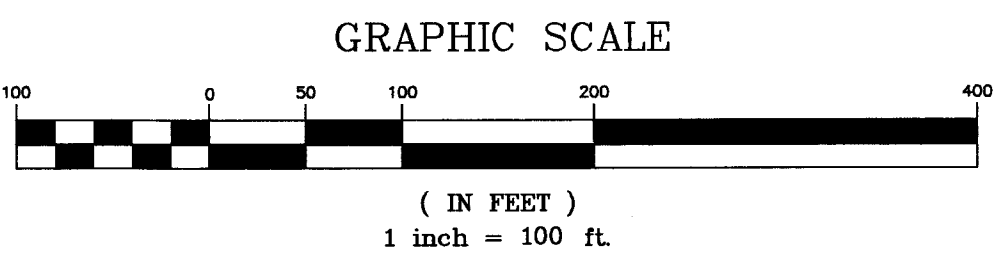
GEOMARK
 CONSULTING, INC.



NOT PLATTED

NOT PLATTED

SUNNYSIDE DRIVE
NOT PLATTED



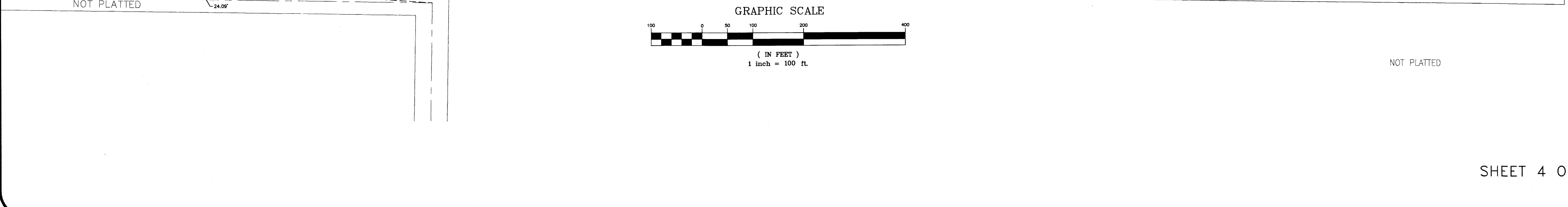
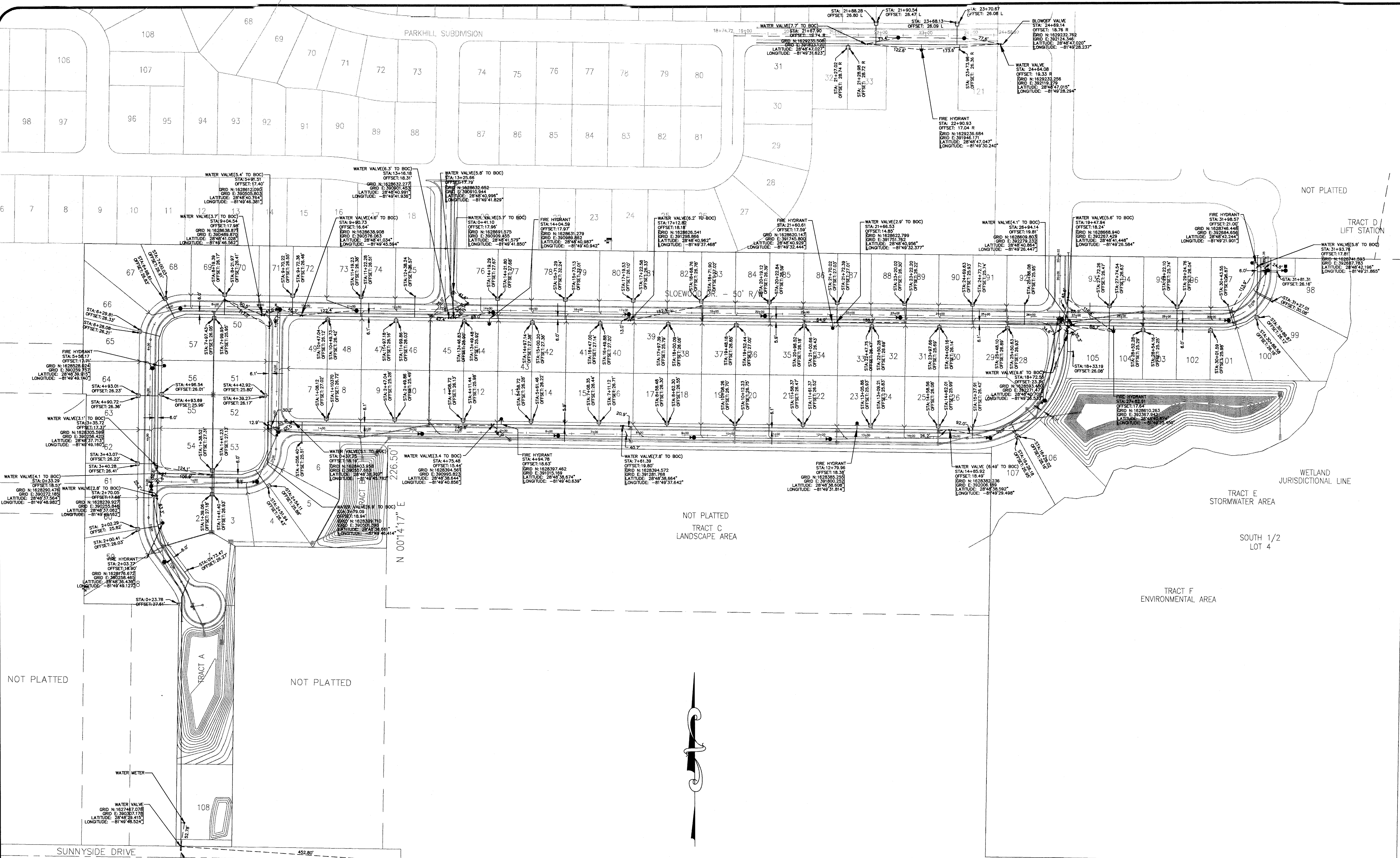
NOT PLATTED

405 West Central Parkway,
Suite 1010
Altamonte Springs, Florida 32714
Phone: (407) 869-9889
Fax: (407) 869-9337
Website: www.geomarkinc.com
Licensed Business 7506

Date	Checked	Drawn	Revisions
October 24, 2006	S.M.C.		
October 24, 2006	M.S.C.		
October 24, 2006	C.P.C.		
October 19, 2006			

Storm Sewer Asbuilts
Prepared for:
Professional Dirt Service
of
Park Hill Phase 2
Lake County, Florida





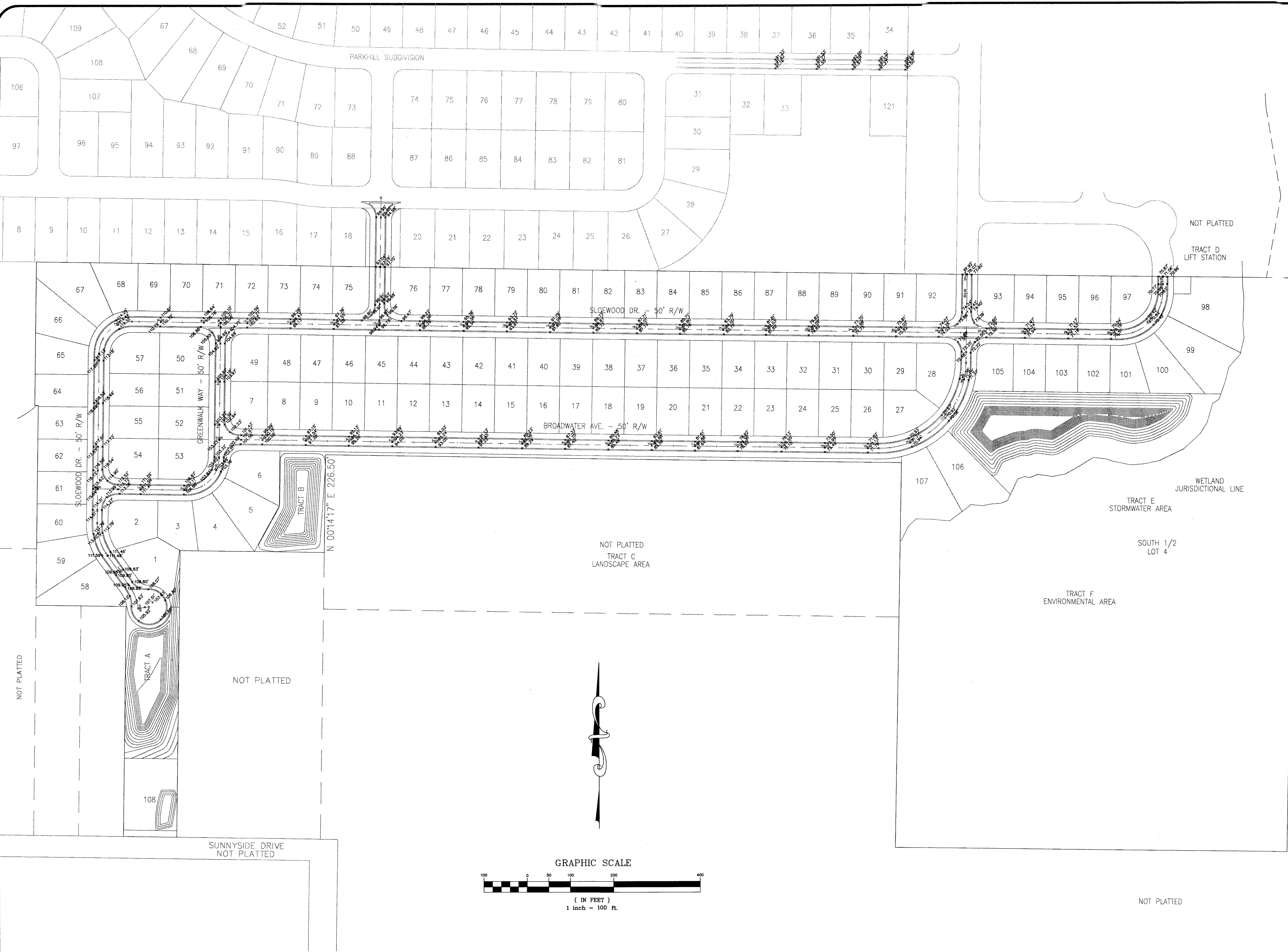
405 West Central Parkway,
Suite 1010
Altamonte Springs, Florida 32714
Phone: (407) 869-9899
Fax: (407) 869-9337
Website: www.geomarkinc.com
Licensed Business 7006

Drawn	Checked	Date	Revisions
S.M.C.	S.M.C.	11/21/06	Added Water Valve, Line, Meter
S.M.C.	S.M.C.	11/14/06	Added tie distances to water valves.

Drawn: S.M.C.
Date: October 24, 2006
Checked: M.S.C.
Date: October 24, 2006
Crew: C.P., C.M.
Date: October 19, 2006
Sheet: 4 of 6
File: 06562WATASB.DWG

Water Line Asbuilts
Prepared for:
Professional Dirt Service
of:
Park Hill Phase 2
Lake County, Florida

SURVEYING & MAPPING
GEOMARK
CONSULTING, INC.



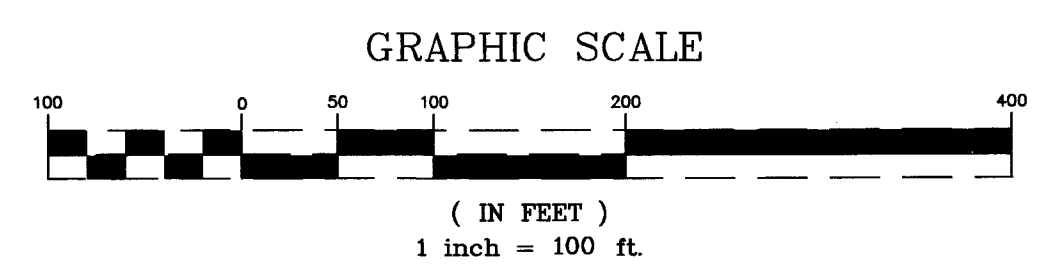
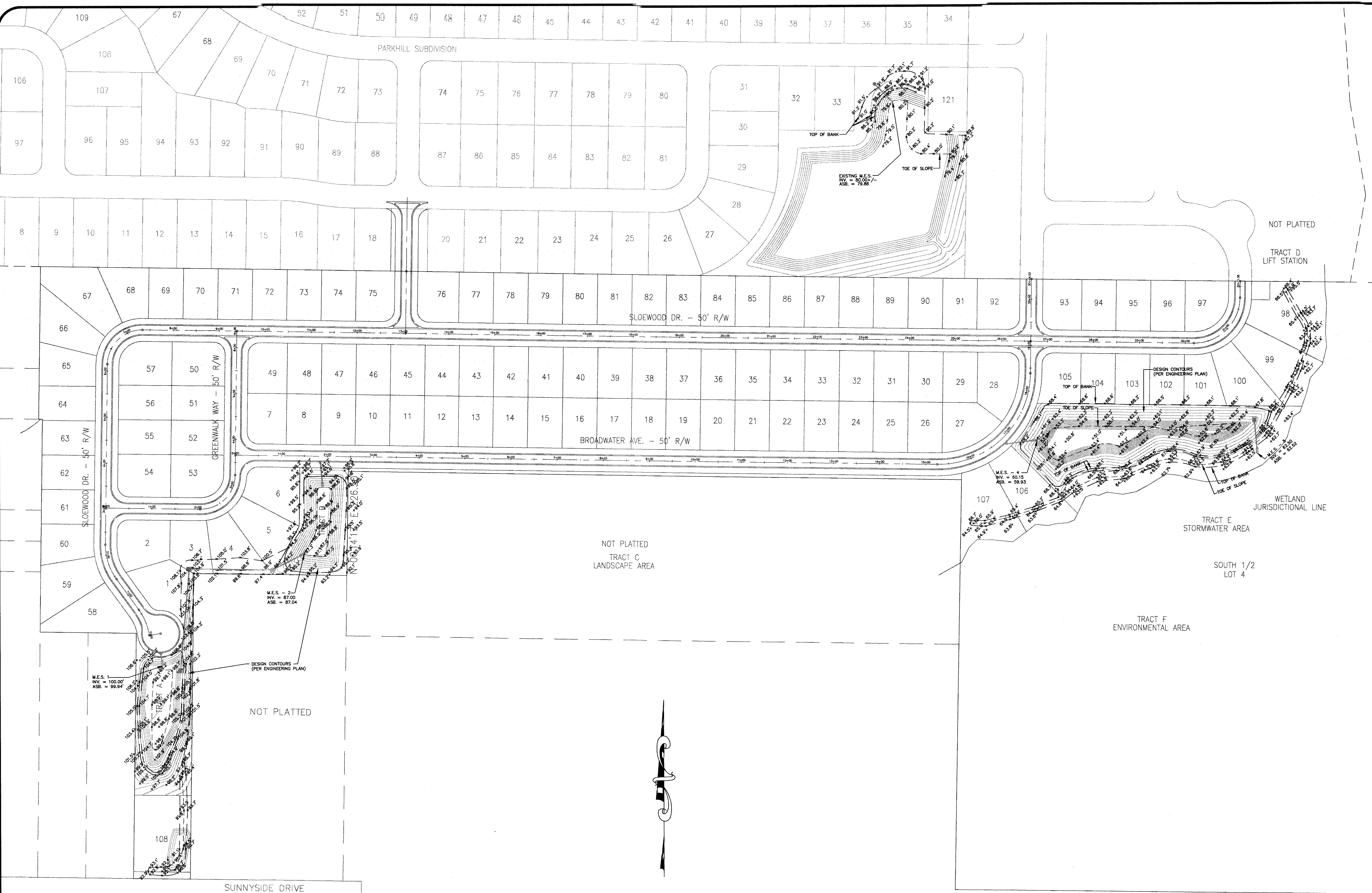
405 West Central Parkway,
 Suite 1010
 Altamonte Springs, Florida 32714
 Phone: (407) 869-9989
 Fax: (407) 869-9337
 Website: www.geomarkinc.com
 Licensed Business 7506

Drawn	Checked	Date	Revisions

Drawn: S.M.C.
 Date: October 23, 2006
 Checked: M.S.C.
 Date: October 23, 2006
 Crew: C.P., C.M.
 Date: October 19, 2006
 Sheet: 5 of 6
 File: 06552ROADASB.DWG

Roadway Asbuilts
 Prepared for:
 Professional Dirt Service
 Parkway Phase 2
 Lake County, Florida

SURVEYING & MAPPING
GEOMARK
 CONSULTING, INC.



405 West Central Parkway,
 Suite 1010
 Allamonte Springs, Florida 32714
 Phone: (407) 869-9989
 Fax: (407) 869-9337
 Website: www.geomarkinc.com
 Licensed Business 7506

Drawn	Checked	Date	Revisions

Drawn: S.M.C.
 Date: October 23, 2006
 Checked: M.S.C.
 Date: October 23, 2006
 Crew: C.P., C.M.
 Date: October 19, 2006
 Sheet: 6 of 6
 File: 06562WRAASB.DWG

Pond Asbuilts
 Prepared for:
 Professional Dirt Service
 of:
 Parkhill Phase 2
 Lake County, Florida

SURVEYING & MAPPING
GEOMARK
 CONSULTING, INC.