



**Open Space Table for Lake Minneola Landings**

Entire Site	39.70 Acres
New R/W for CR 565	0.62 Acres
Type "C" Wetlands	12.89 Acres
39.70 - 12.89 - 0.62	= 26.19 Acres

**Total Buildable Site** 26.19 Acres

**Open Space Shown on Concept Plan**

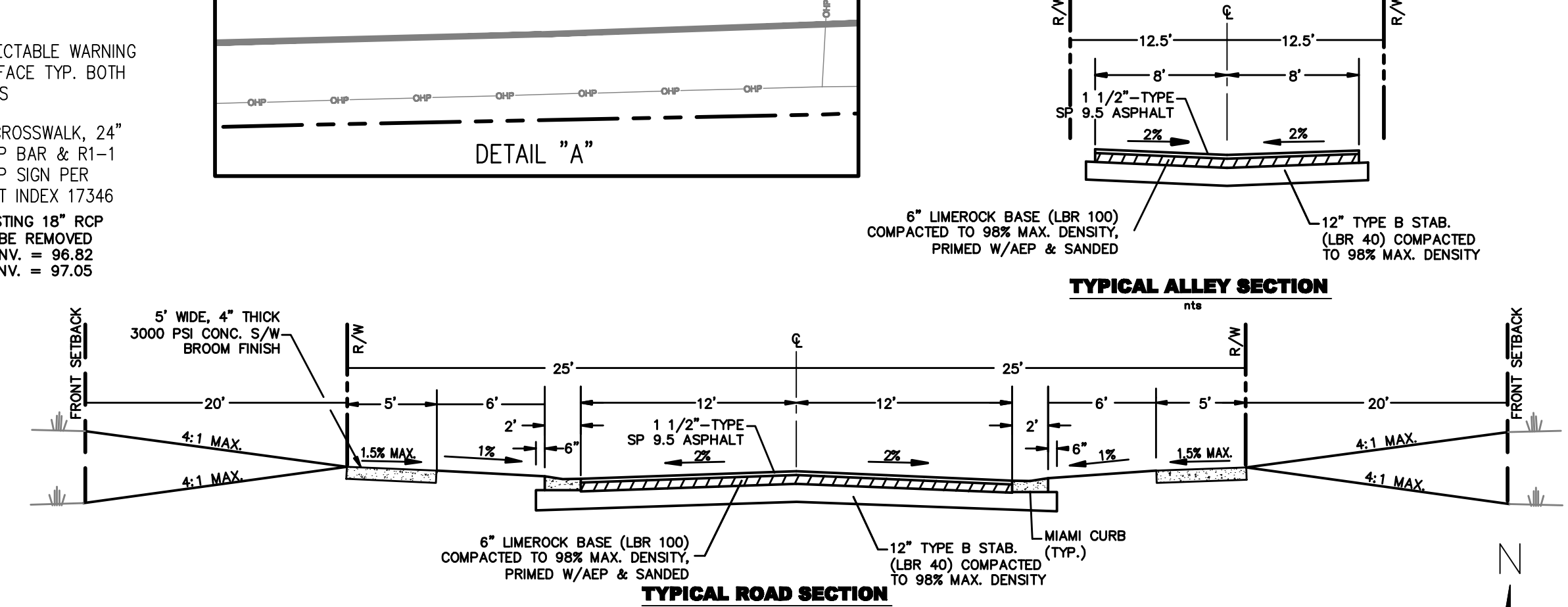
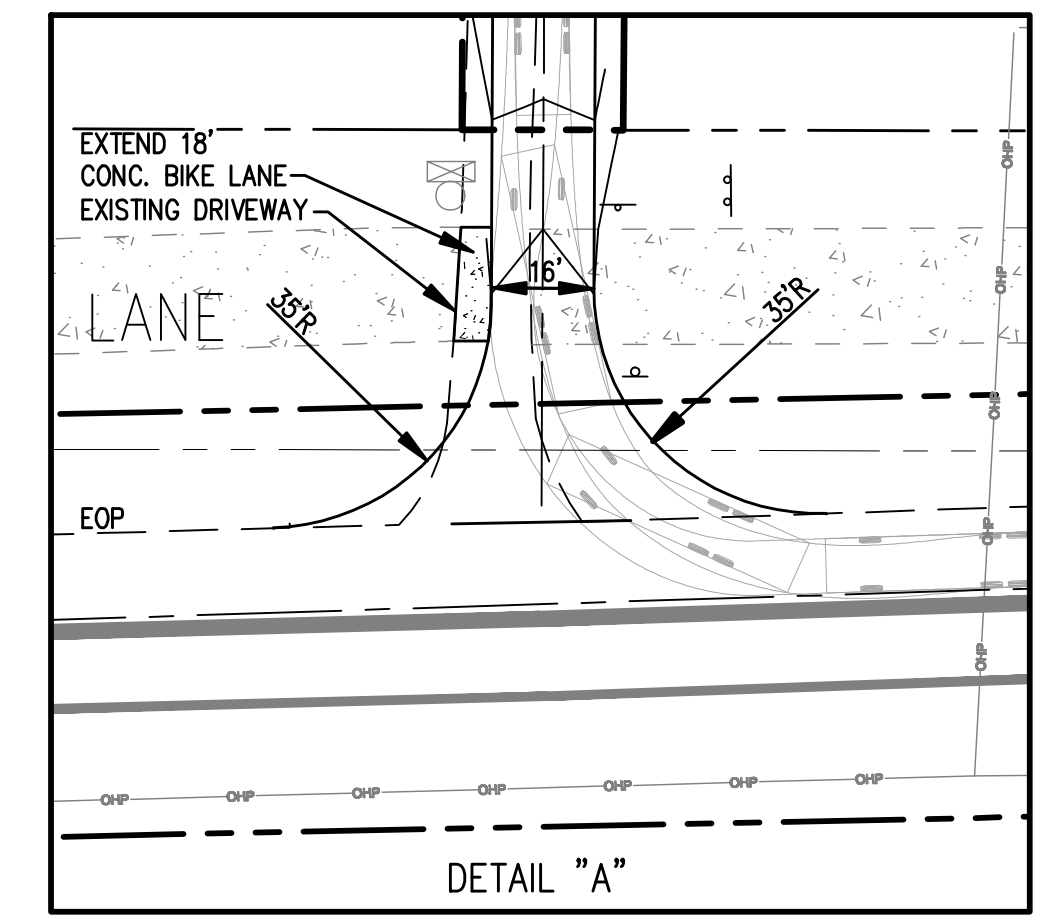
Type "A" Landscape, Drainage	0.12 Acres
Type "B" Landscape, Drainage	0.15 Acres
Type "C" Buffer	0.51 Acres
Type "D" Buffer	0.11 Acres
Type "E" Landscape, Bike Path, Access	0.24 Acres
Type "F" Upland Buffer	0.62 Acres
WRA B-3	1.29 Acres
WRA B-1	1.03 Acres
Passive Park "A"	0.42 Acres
Passive Park "B"	0.06 Acres
Passive Park "C"	1.69 Acres
Passive Park "D"	0.13 Acres
<b>= 7.19 Acres</b>	

26.19 / 4 = 6.55 Acres Required / 7.19 Acres Provided

Units Per Acre 2.63

SEE SHEET 6 FOR CURVE DATA CHART

LOT #	ACRES	LOT #	ACRES	LOT #	ACRES
1	0.20	24	0.25	47	0.18
2	0.20	25	0.24	48	0.21
3	0.21	26	0.19	49	0.23
4	0.22	27	0.19	50	0.21
5	0.34	28	0.19	51	0.21
6	0.19	29	0.19	52	0.21
7	0.20	30	0.19	53	0.21
8	0.23	31	0.21	54	0.20
9	0.23	32	0.22	55	0.18
10	0.25	33	0.18	56	0.18
11	0.29	34	0.19	57	0.18
12	0.27	35	0.21	58	0.18
13	0.20	36	0.21	59	0.18
14	0.23	37	0.24	60	0.21
15	0.25	38	0.22	61	0.24
16	0.28	39	0.19	62	0.18
17	0.33	40	0.27	63	0.18
18	0.30	41	0.23	64	0.18
19	0.31	42	0.28	65	0.18
20	0.29	43	0.28	66	0.19
21	0.28	44	0.34	67	0.18
22	0.27	45	0.20	68	0.18
23	0.27	46	0.18	69	0.26



**NOTES:**

SITE AREA	39.70 AC.
BASE SITE AREA	26.19 AC.
SITE ZONING	PUD
ADJACENT ZONING	PUD, R-3, RMPP & A
PROJECT DENSITY	2.63 DU/AC

SIDEWALKS PROVIDED AS SHOWN. SIDEWALKS NOT FRONTING RESIDENTIAL LOTS MUST BE CONSTRUCTED WITH THE ROAD INFRASTRUCTURE. THE SIDEWALKS THAT FRONT THE RESIDENTIAL LOTS WILL REQUIRE A SIDEWALK BOND COORDINATED BY THE SUBDIVISION COORDINATOR.

EARTHWORK TO BE BALANCED ON SITE

100 YEAR FLOOD ELEVATION WETLANDS 98.3 12.89 AC

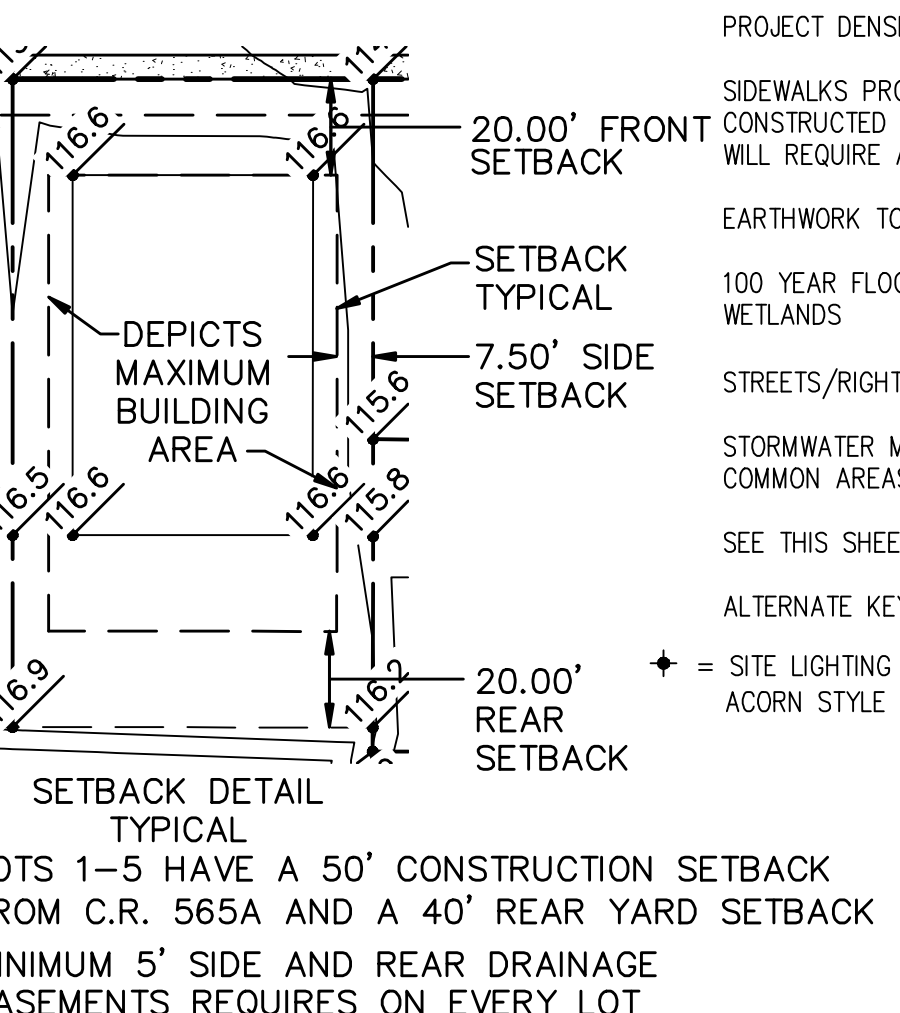
STREETS/RIGHT OF WAY PUBLIC DEDICATION

STORMWATER MANAGEMENT & COMMON AREAS BY HOA

SEE THIS SHEET FOR OPEN SPACE TABLE & TYPICAL SECTION

ALTERNATE KEY # 1303346, 1303257, 1303397, 2602708, 2602694

+ = SITE LIGHTING (DECORATIVE POLE ACORN STYLE LAMP)



**SITE PLAN**

**H & B CONSULTING ENGINEERS, INC.**  
 Certificate of Authorization # 4829  
 P.O. Box 520  
 218 N. Florida Street - Suite 3  
 Bushnell, Florida 33513  
 Phone : (352) 793-2113

REVISIONS	
10/15	Added Turn Lanes CR 561A
10/15	Listed lot No's. per Lake Co.
4/16	Lake County comments from 4-11-16

Drawn: WSR    Checked: MZB  
 Date: 06/16    Scale: as shown    Sheet 4 of 18

4/16/16 H & B Consulting Engineers, Inc. Landings/Minneola Landings/Tracts 1-70/2017 10:57:28 AM