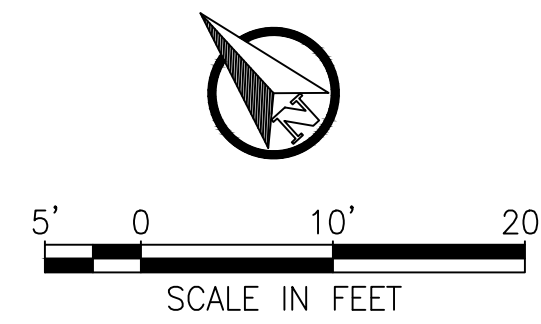
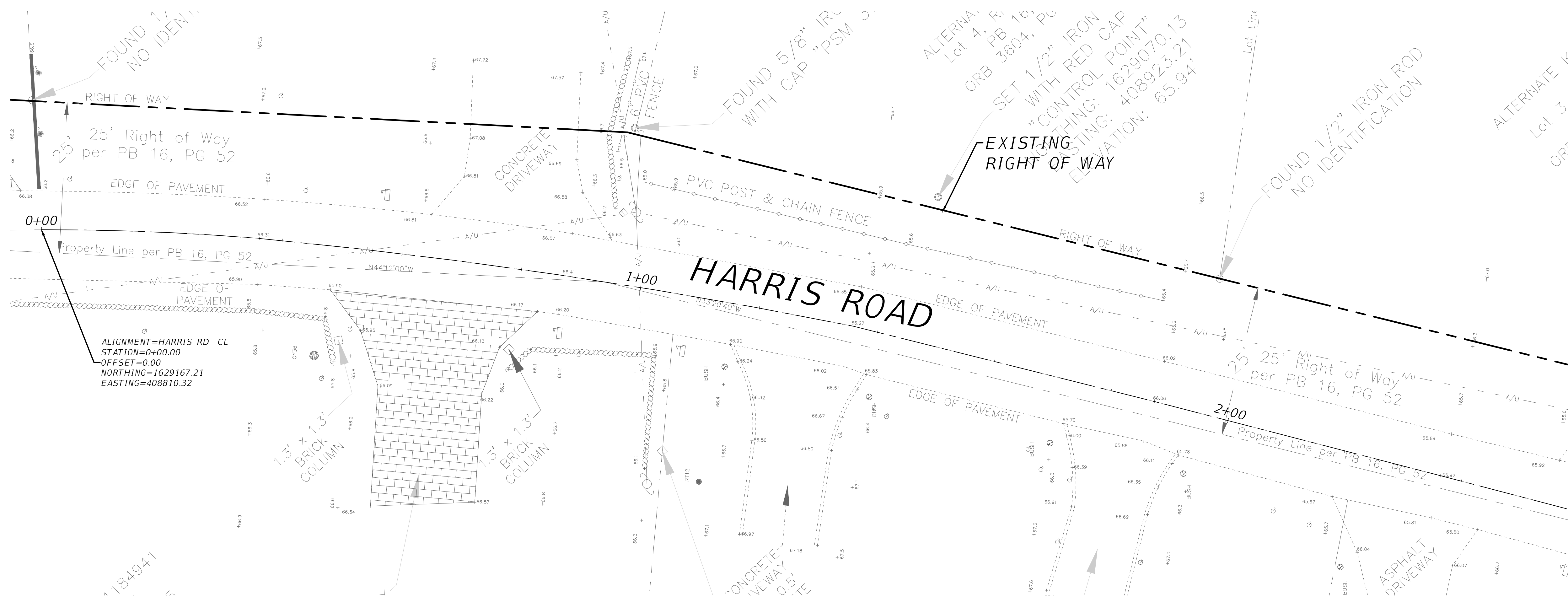




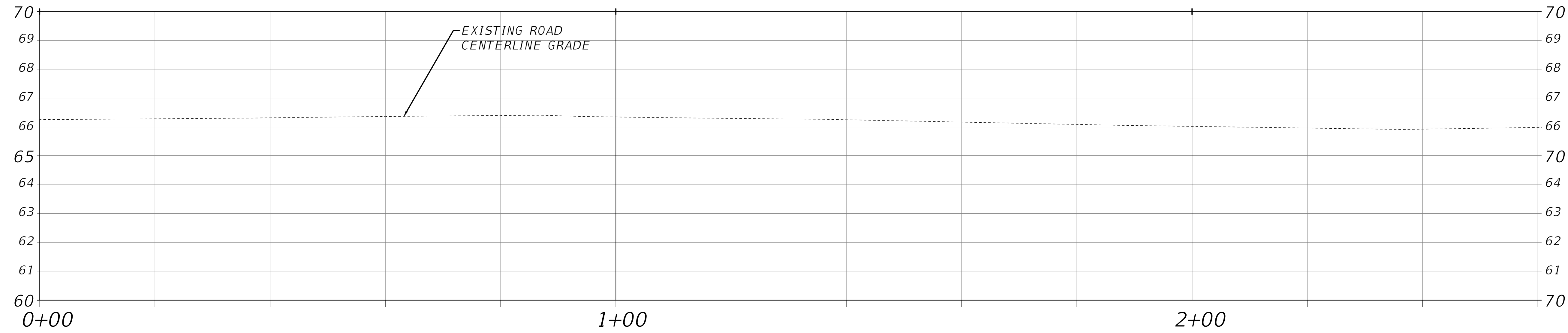
FILENAME: C:\2015\15027\_HARRIS\_RD\_TAVARES\_Topo\Engineering\Drawings\Plans\Base\_1.dwg

PLOTTED BY: Nunez, Osvaldo

PLOTTED: 2/5/2018 8:53 AM



CONTINUE ON SHEET C3



|                        |
|------------------------|
| SIGNATURE              |
| 2/5/18                 |
| Alan W. Kirkland, P.E. |

DEPARTMENT OF PUBLIC WORKS  
ENGINEERING DIVISION

LAKE COUNTY  
FLORIDA  
350 N. SINCLAIR AVE., TAVARES, FLORIDA 32778

| REVISION: | DATE     |
|-----------|----------|
| S. - 25   | T. - 195 |
| R. - 25E  |          |

|               |              |
|---------------|--------------|
| SURVEYED: RIT | DATE: 2/5/18 |
| FIELD BOOK:   | PAGE:        |
| DESIGNED: OEN | DATE: 2/5/18 |
| DRAWN: OEN    | DATE: 2/5/18 |
| APPROVED: AWK | DATE: 2/5/18 |

HARRIS ROAD  
DRAINAGE IMPROVEMENTS  
DRAINAGE PLAN  
DRAFT FOR REVIEW ONLY

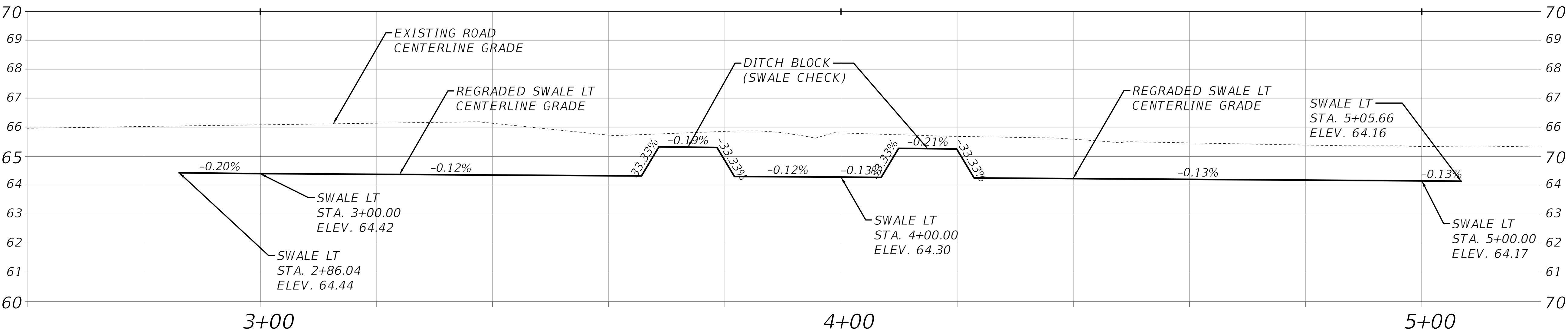
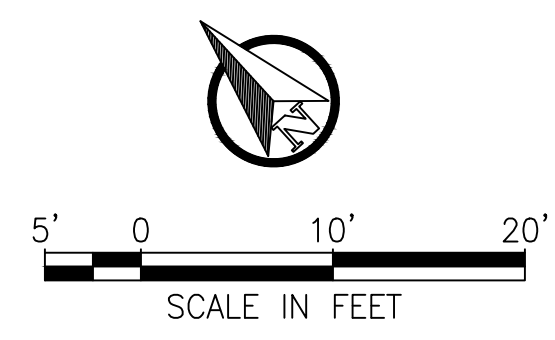
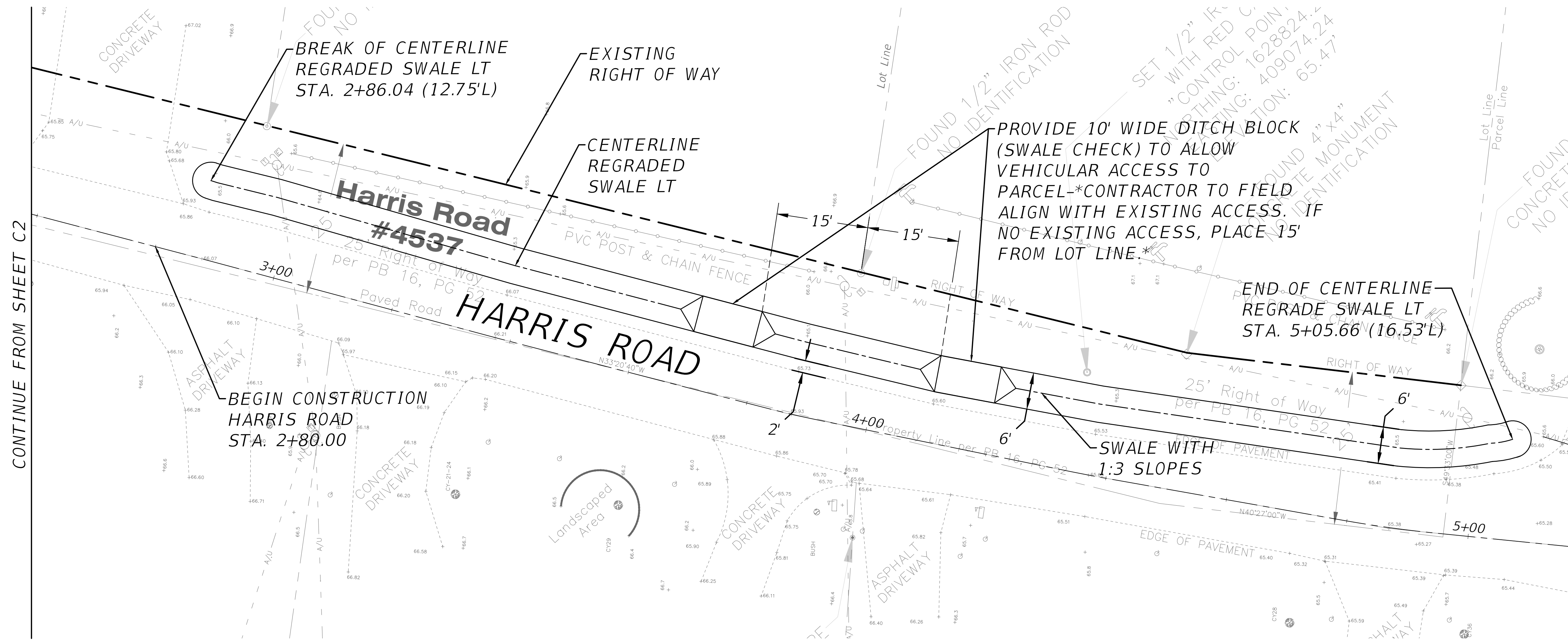
JOB NO.:  
15027

SHEET:  
C 2

FILENAME: C:\2015\15027\_HARRISE\_RD\_TAVARES\_Topo\Engineering\Drawings\Plans\1.dwg

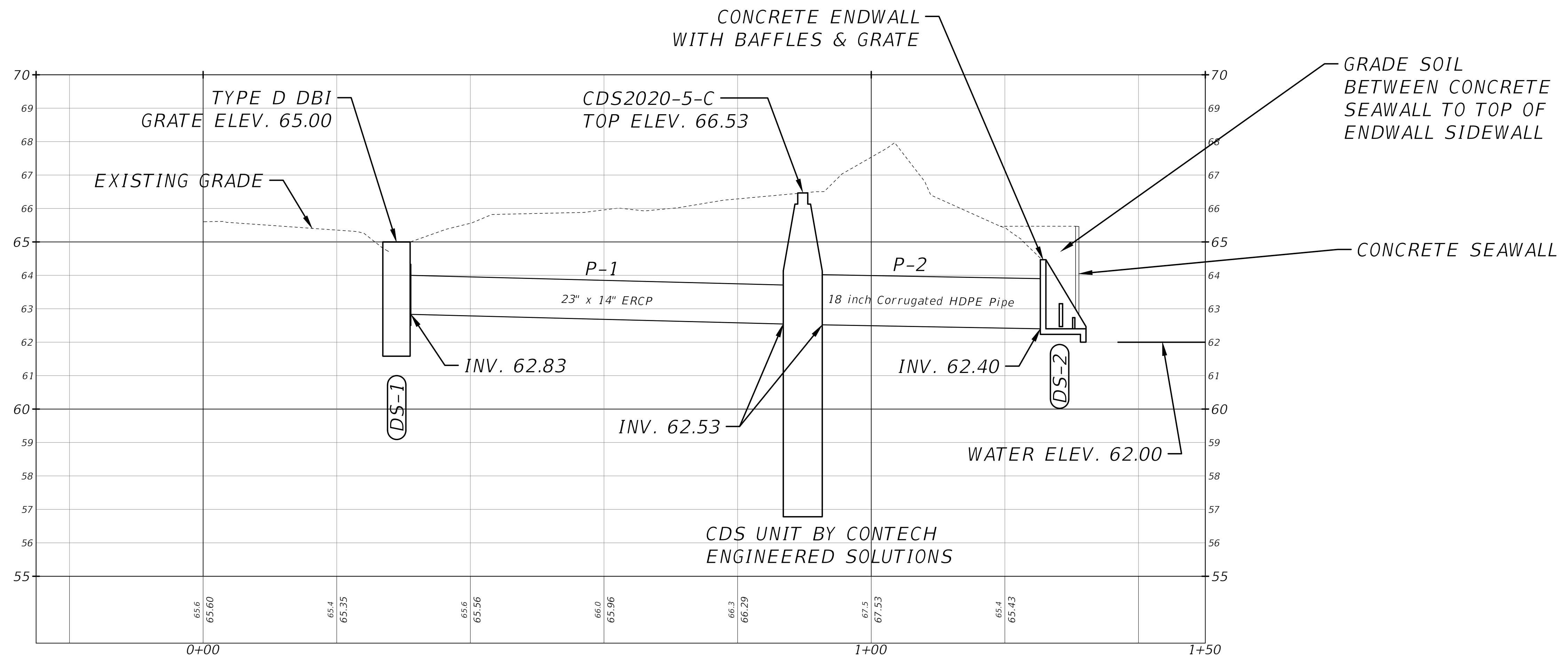
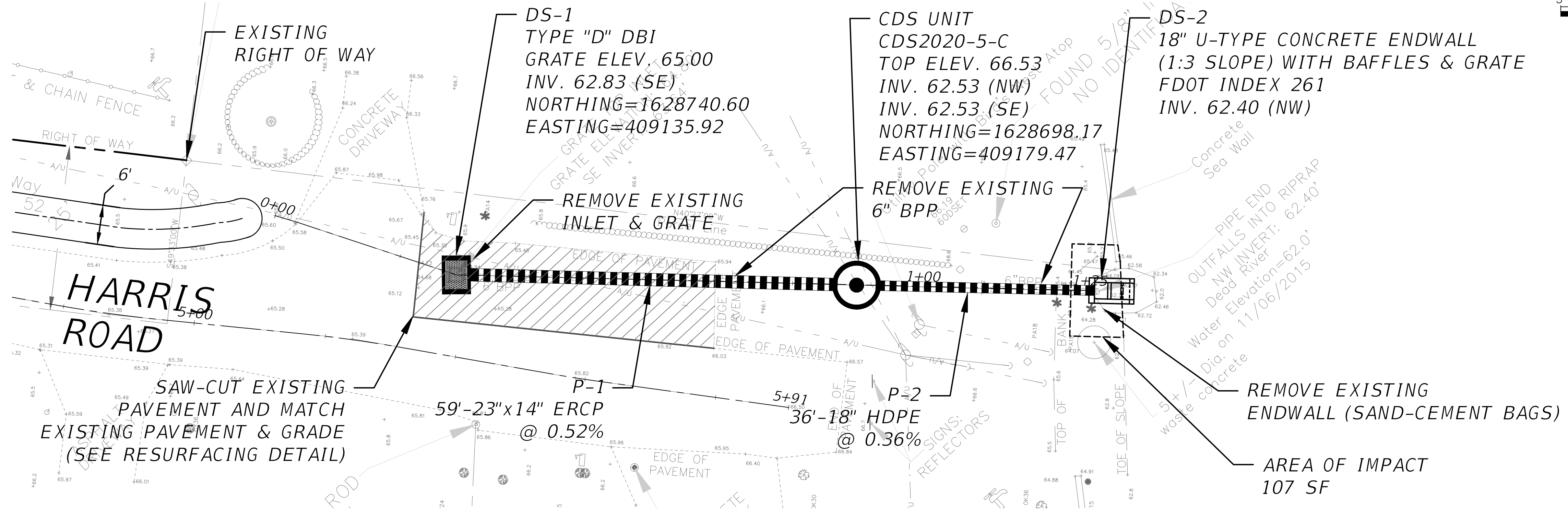
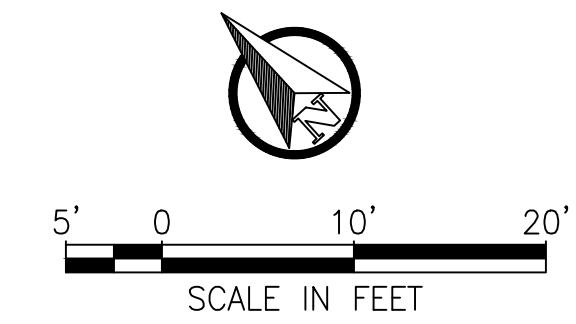
PLOTTED BY: Nunez, Osvaldo

PLOTTED: 2/5/2018 8:54 AM



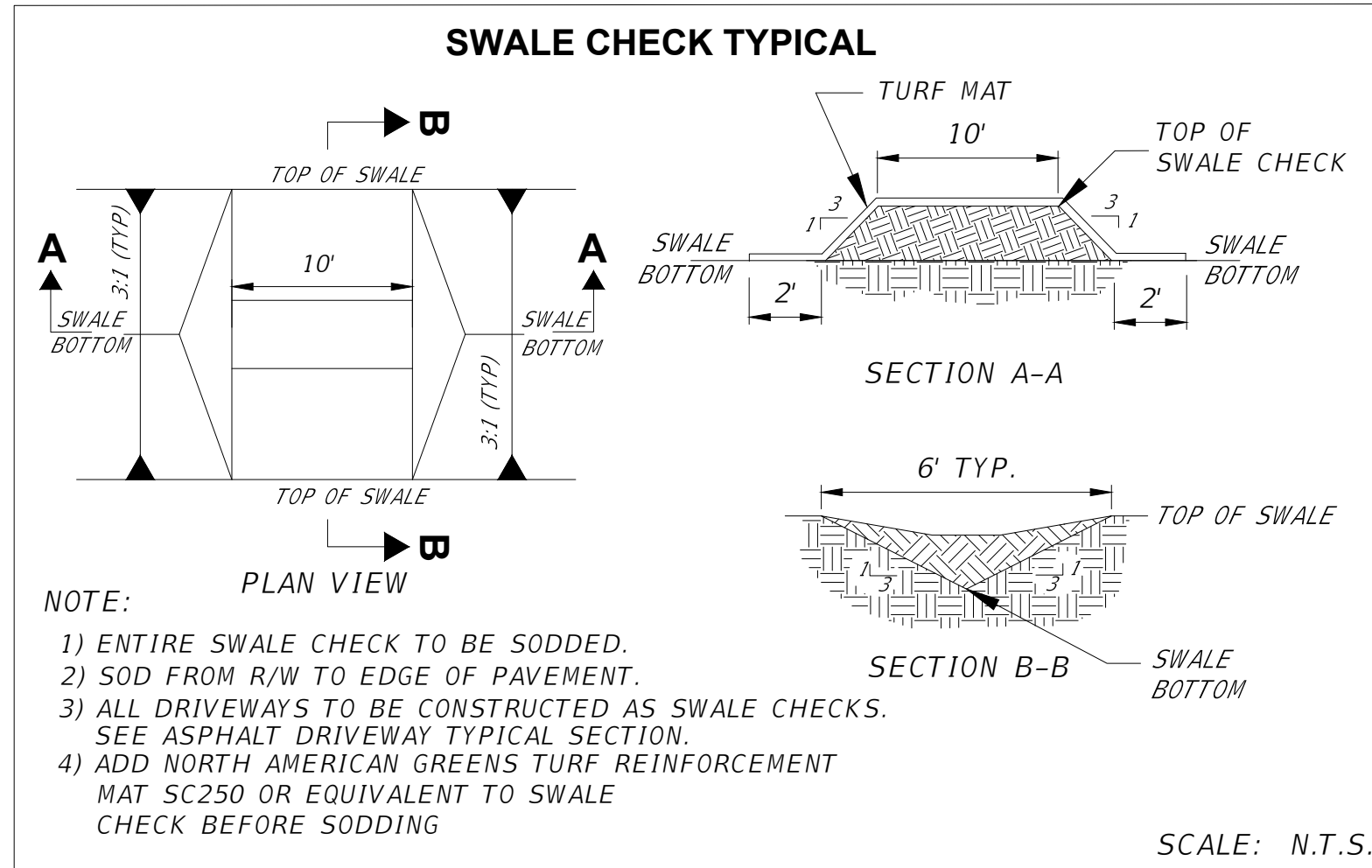
|  |               |         |               |                        |        |
|--|---------------|---------|---------------|------------------------|--------|
| SIGNATURE  |               | 2/5/18  |               | Alan W. Kirkland, P.E. |        |
| DEPARTMENT OF PUBLIC WORKS<br>ENGINEERING DIVISION                                       |               |         |               |                        |        |
| <br>LAKE COUNTY<br>FLORIDA<br>350 N. SINCLAIR AVE., TAVARES, FLORIDA 32778               |               |         |               |                        |        |
| DATE   | REVISION:     | R - 25E | DATE:         | 2/5/18                 | PAGE:  |
| T. - 195   | SURVEYED: RIT | S. - 25 | DESIGNED: OEN | DATE:                  | 2/5/18 |
|  | FIELD BOOK:   |         | DRAWN: OEN    | DATE:                  | 2/5/18 |
|  | APPROVED: ANK |         | DATE:         | 2/5/18                 |        |
| <b>HARRIS ROAD<br/>DRAINAGE IMPROVEMENTS<br/>DRAINAGE PLAN<br/>DRAFT FOR REVIEW ONLY</b> |               |         |               |                        |        |
| JOB NO.: 15027   |               |         |               |                        |        |
| SHEET: C 3   |               |         |               |                        |        |

# PIPE NETWORK PLAN AND PROFILE

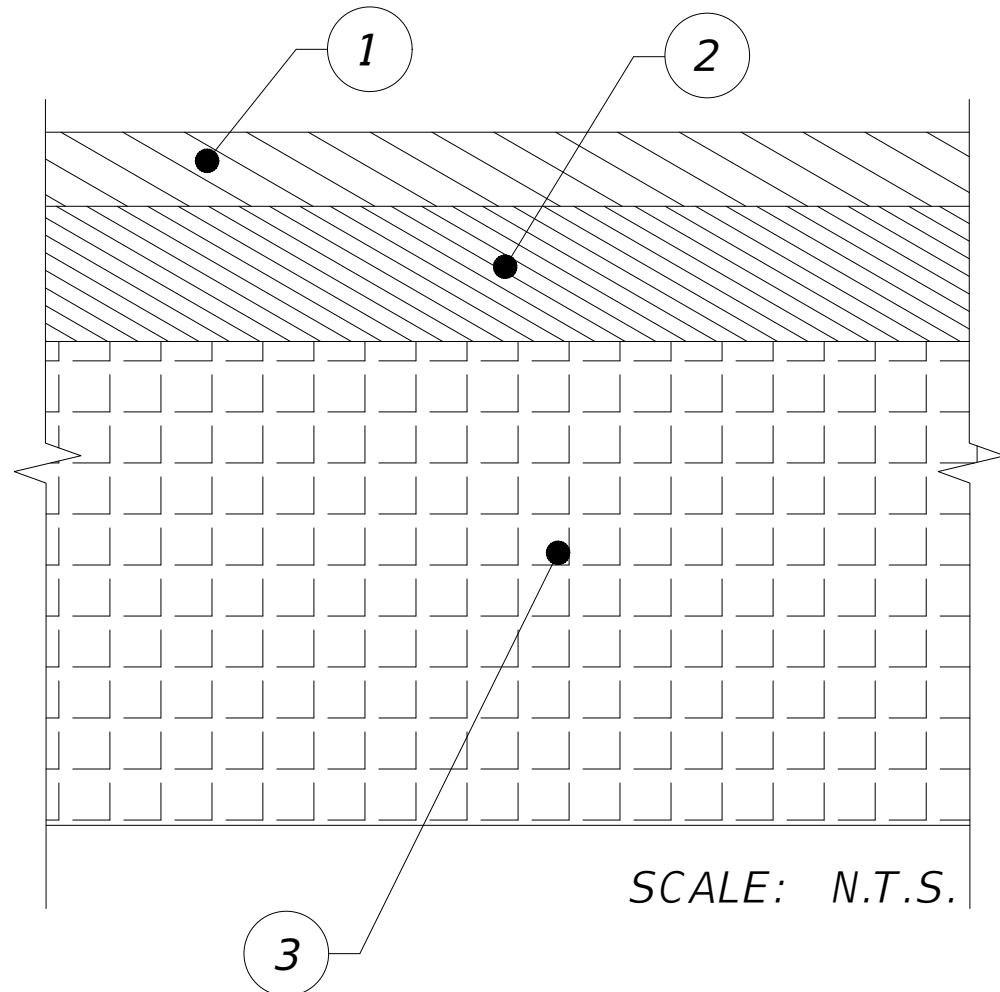


|  |           |               |              |                        |  |
|--|-----------|---------------|--------------|------------------------|--|
| SIGNATURE  |           | 2/5/18        |              | Alan W. Kirkland, P.E. |  |
| DEPARTMENT OF PUBLIC WORKS<br>ENGINEERING DIVISION                                 |           |               |              |                        |  |
| <br>350 N. SINCLAIR AVE., TAVARES, FLORIDA 32778                                   |           |               |              |                        |  |
| DATE   | REVISION: | S. - 25       | T. - 195     | R. - 25E               |  |
|  |           | SURVEYED: RJT | DATE: 2/5/18 |                        |  |
|  |           | FIELD BOOK:   | PAGE:        |                        |  |
|  |           | DESIGNED: OEN | DATE: 2/5/18 |                        |  |
|  |           | DRAWN: OEN    | DATE: 2/5/18 |                        |  |
|  |           | APPROVED: AWK | DATE: 2/5/18 |                        |  |
| HARRIS ROAD<br>DRAINAGE IMPROVEMENTS<br>PIPE NETWORK PLAN<br>DRAFT FOR REVIEW ONLY |           |               |              |                        |  |
| JOB NO.: 15027   |           |               |              |                        |  |
| SHEET: C 4   |           |               |              |                        |  |

FILENAME: C:\2015\15027\_HARRIS\_RD\_TAVARES\_TPOV\Engineering\Drawings\Plans\VBase\_1.dwg  
 PLOTTED BY: Nunez, Osvaldo  
 PLOTTED: 2/5/2018 8:58 AM



## TYPICAL ASPHALT RESURFACING SECTION DETAIL



**KEY:**

- 1 1" MIN. TYPE FC-9.5 SUPERPAVE ASPHALT OVERLAY.
- 2 6" LIMEROCK - 98% COMPACTION, A.A.S.H.T.O. T-180, PRIMED & SANDED.
- 3 12" TYPE B STABILIZED SUBGRADE MIN. LBR 40, 98% COMPACTION, A.A.S.H.T.O. T-180.

I:\STORMWATER\DRP\TIN\NEW STD CONVERSIONS\STANDARD DETAILS\CDS\CDS2020-5-C-DTL.DWG 12/16/2008 11:22 AM

**PLAN VIEW B-B N.T.S.**

**ELEVATION A-A N.T.S.**

**CDS2020-5-C DESIGN NOTES**

CDS2020-5-C RATED TREATMENT CAPACITY IS 1.1 CFS, OR PER LOCAL REGULATIONS. MAXIMUM HYDRAULIC INTERNAL BYPASS CAPACITY IS 14.0 CFS. IF THE SITE CONDITIONS EXCEED 14.0 CFS, AN UPSTREAM BYPASS STRUCTURE IS REQUIRED.

THE STANDARD CDS2020-5-C CONFIGURATION IS SHOWN. ALTERNATE CONFIGURATIONS ARE AVAILABLE AND ARE LISTED BELOW. SOME CONFIGURATIONS MAY BE COMBINED TO SUIT SITE REQUIREMENTS.

**CONFIGURATION DESCRIPTION**

- GRATED INLET ONLY (NO INLET PIPE)
- GRATED INLET WITH INLET PIPE OR PIPES
- CURB INLET ONLY (NO INLET PIPE)
- CURB INLET WITH INLET PIPE OR PIPES
- SEPARATE OIL BAFFLE (SINGLE INLET PIPE REQUIRED FOR THIS CONFIGURATION)
- SEDIMENT WEIR FOR NJDEP / NJCAT CONFORMING UNITS

**FRAME AND COVER (DIAMETER VARIES) N.T.S.**

**SITE SPECIFIC DATA REQUIREMENTS**

| STRUCTURE ID | WATER QUALITY FLOW RATE (CFS) | PEAK FLOW RATE (CFS) | RETURN PERIOD OF PEAK FLOW (YRS) | SCREEN APERTURE (2400 OR 4700) |
|--------------|-------------------------------|----------------------|----------------------------------|--------------------------------|
|              |                               |                      |                                  |                                |

| PIPE DATA:   | I.E. | MATERIAL | DIAMETER |
|--------------|------|----------|----------|
| INLET PIPE 1 |      |          |          |
| INLET PIPE 2 |      |          |          |
| OUTLET PIPE  |      |          |          |

| ANTI-FLOTATION BALLAST | WIDTH | HEIGHT |
|------------------------|-------|--------|
|                        |       |        |

NOTES/SPECIAL REQUIREMENTS:  
 \* PER ENGINEER OF RECORD

**GENERAL NOTES**

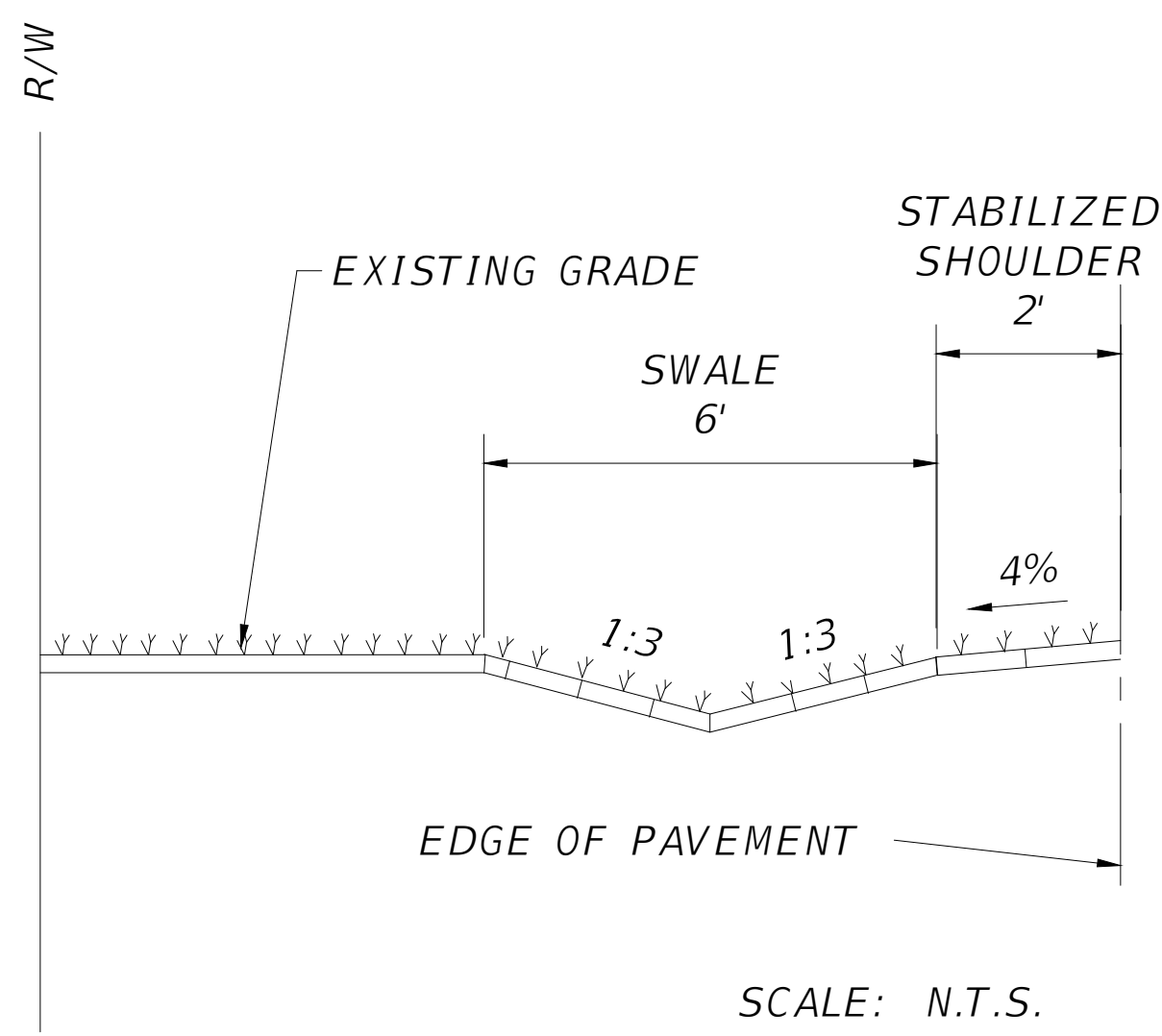
- CONTECH TO PROVIDE ALL MATERIALS UNLESS NOTED OTHERWISE.
- DIMENSIONS MARKED WITH ( ) ARE REFERENCE DIMENSIONS. ACTUAL DIMENSIONS MAY VARY.
- FOR FABRICATION DRAWINGS WITH DETAILED STRUCTURE DIMENSIONS AND WEIGHTS, PLEASE CONTACT YOUR CONTECH CONSTRUCTION PRODUCTS REPRESENTATIVE. [www.contech-cpi.com](http://www.contech-cpi.com)
- CDS WATER QUALITY STRUCTURE SHALL BE IN ACCORDANCE WITH ALL DESIGN DATA AND INFORMATION CONTAINED IN THIS DRAWING.
- STRUCTURE SHALL MEET AASHTO H20 AND CASTINGS SHALL MEET AASHTO M308 LOAD RATING, ASSUMING GROUNDWATER ELEVATION AT, OR BELOW, THE OUTLET PIPE INVERT ELEVATION. ENGINEER OF RECORD TO CONFIRM ACTUAL GROUNDWATER ELEVATION.
- PVC HYDRAULIC SHEAR PLATE IS PLACED ON SHELF AT BOTTOM OF SCREEN CYLINDER. REMOVE AND REPLACE AS NECESSARY DURING MAINTENANCE CLEANING.

**INSTALLATION NOTES**

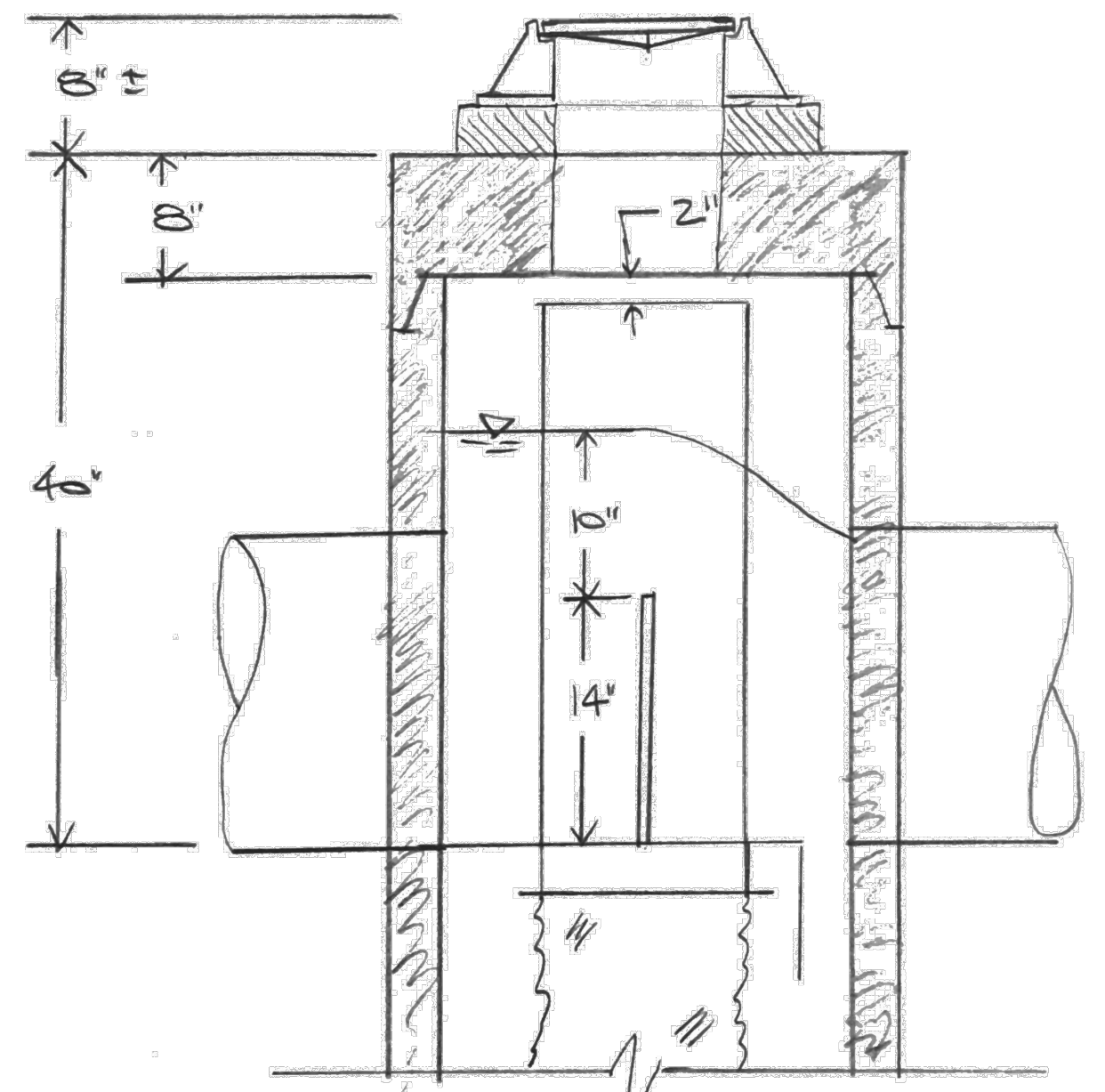
- ANY SUB-BASE, BACKFILL DEPTH, AND/OR ANTI-FLOTATION PROVISIONS ARE SITE-SPECIFIC DESIGN CONSIDERATIONS AND SHALL BE SPECIFIED BY ENGINEER OF RECORD.
- CONTRACTOR TO PROVIDE EQUIPMENT WITH SUFFICIENT LIFTING AND REACH CAPACITY TO LIFT AND SET THE CDS MANHOLE STRUCTURE (LIFTING CLUTCHES PROVIDED).
- CONTRACTOR TO ADD JOINT SEALANT BETWEEN ALL STRUCTURE SECTIONS, AND ASSEMBLE STRUCTURE.
- CONTRACTOR TO PROVIDE, INSTALL, AND GROUT PIPES. MATCH PIPE INVERTS WITH ELEVATIONS SHOWN.
- CONTRACTOR TO TAKE APPROPRIATE MEASURES TO ASSURE UNIT IS WATER TIGHT, HOLDING WATER TO FLOWLINE INVERT MINIMUM. IT IS SUGGESTED THAT ALL JOINTS BELOW PIPE INVERTS ARE GROUTED.

**CDS2020-5-C  
 INLINE CDS  
 STANDARD DETAIL**

## TYPICAL SWALE LEFT SECTION



## CDS UNIT SKETCH DETAIL



FILENAME: 0:\2015\15027\_HARRIS\_RD\_TAVARES\_TORO\Engineering\Drawings\Plans\VBase\_1.dwg

PLOTTED BY: Munoz, Osvaldo

**DEPARTMENT OF PUBLIC WORKS  
 ENGINEERING DIVISION**

**LAKE COUNTY  
 FLORIDA**

350 N. SINCLAIR AVE., TAVARES, FLORIDA 32718

Alan W. Kirkland, P.E.

HARRIS ROAD  
 DRAINAGE IMPROVEMENTS  
 TYPICAL DETAILS  
 DRAFT FOR REVIEW ONLY

| DATE | REVISION: |
|------|-----------|
|      |           |

| SURVEYED: RJT | DATE: 2/5/18 | DESIGNED: OEN | DATE: 2/5/18 |
|---------------|--------------|---------------|--------------|
|               |              |               |              |

| FIELD BOOK: | PAGE: | DRAWN: OEN | DATE: 2/5/18 |
|-------------|-------|------------|--------------|
|             |       |            |              |

| APPROVED: AWK | DATE: 2/5/18 |
|---------------|--------------|
|               |              |

JOB NO.: 15027

SHEET: C 5