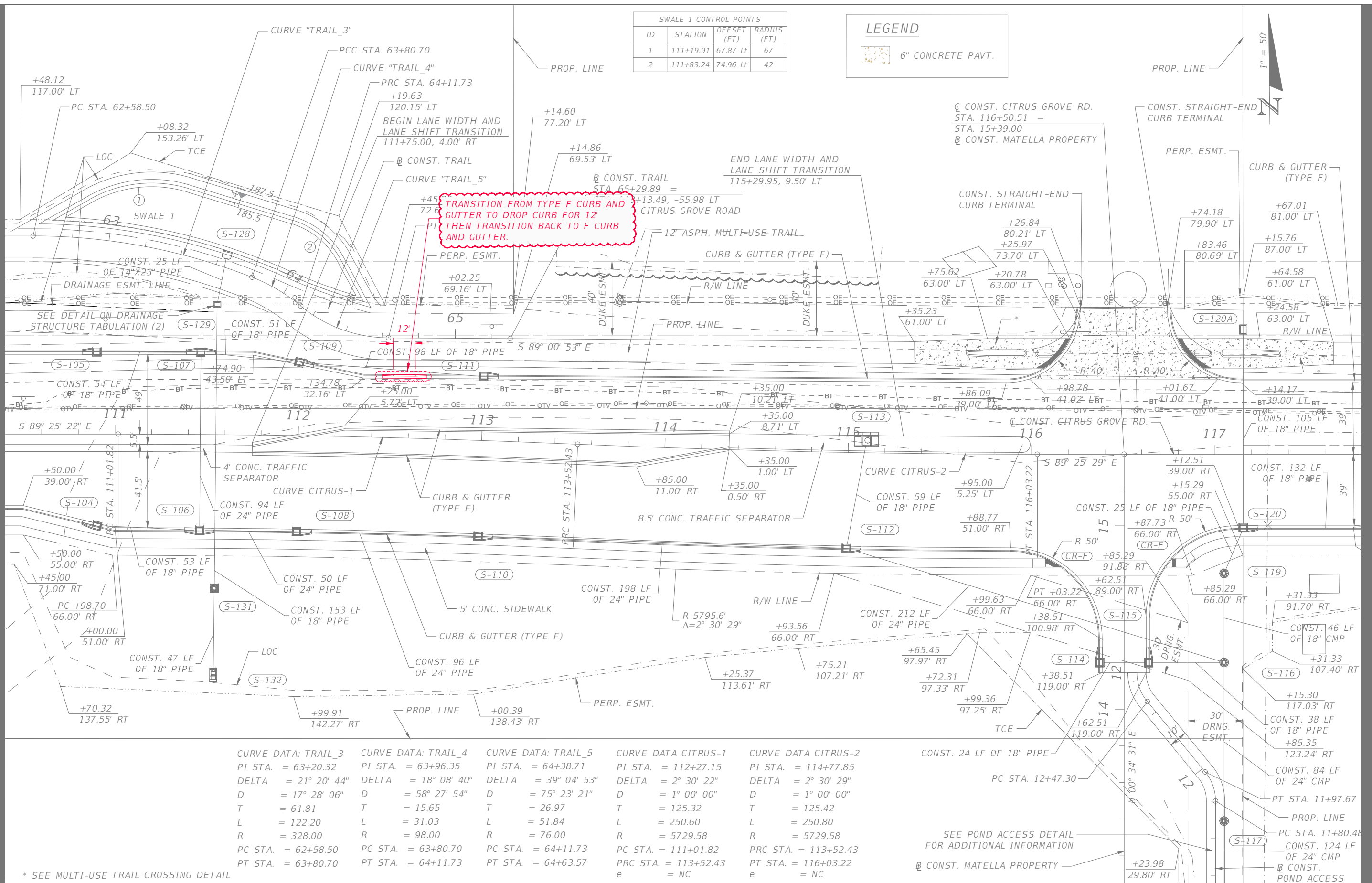


SWALE 1 CONTROL POINTS			
ID	STATION	OFFSET (FT)	RADIUS (FT)
1	111+19.91	67.87 Lt	67
2	111+83.24	74.96 Lt	42

LEGEND

6" CONCRETE PAVT.

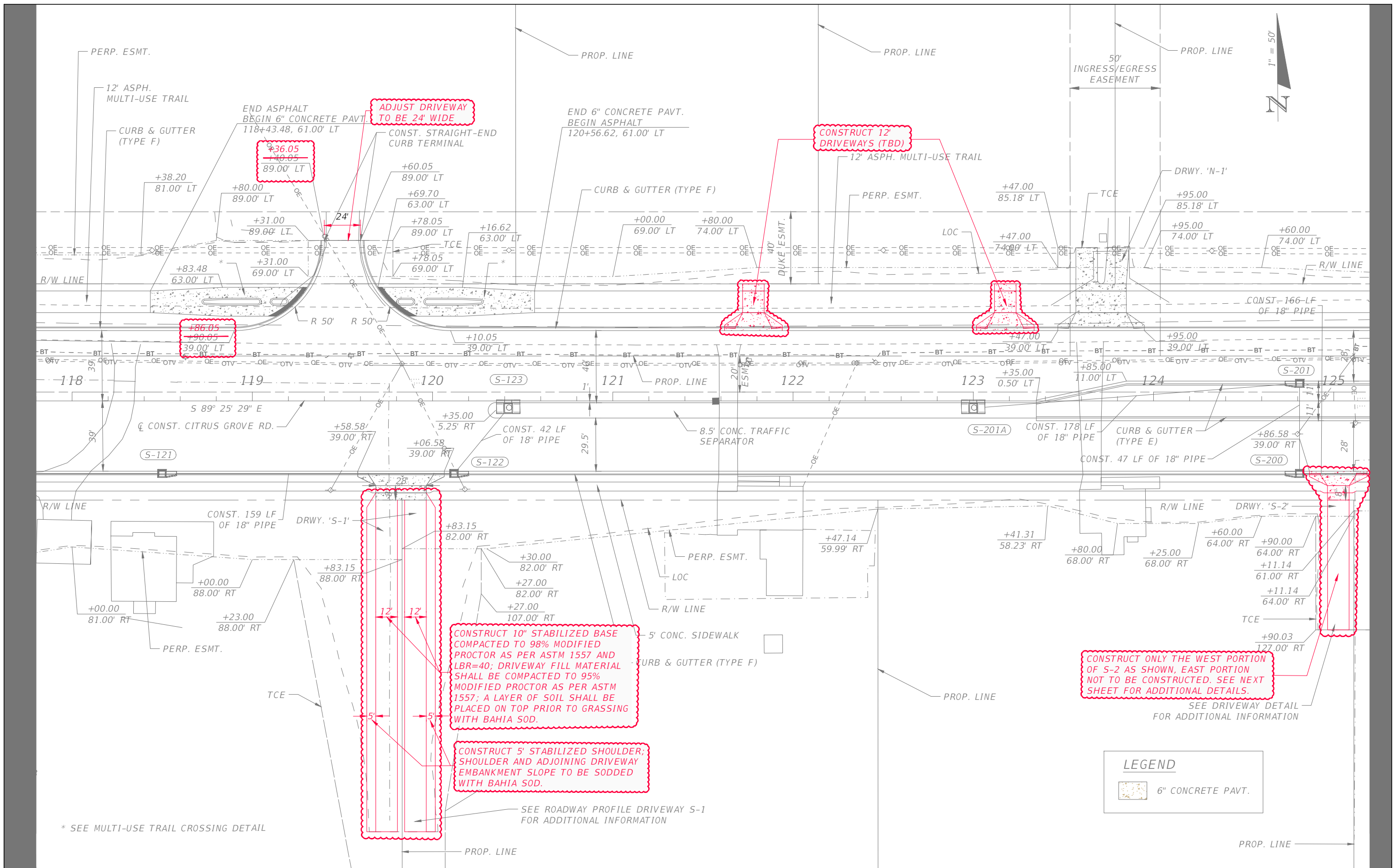


TRANSITION FROM TYPE F CURB AND GUTTER TO DROP CURB FOR 12' THEN TRANSITION BACK TO F CURB AND GUTTER.

CURVE DATA: TRAIL_3	CURVE DATA: TRAIL_4	CURVE DATA: TRAIL_5	CURVE DATA: CITRUS-1	CURVE DATA: CITRUS-2
PI STA. = 63+20.32	PI STA. = 63+96.35	PI STA. = 64+38.71	PI STA. = 112+27.15	PI STA. = 114+77.85
DELTA = 21° 20' 44"	DELTA = 18° 08' 40"	DELTA = 39° 04' 53"	DELTA = 2° 30' 22"	DELTA = 2° 30' 29"
D = 17° 28' 06"	D = 58° 27' 54"	D = 75° 23' 21"	D = 1° 00' 00"	D = 1° 00' 00"
T = 61.81	T = 15.65	T = 26.97	T = 125.32	T = 125.42
L = 122.20	L = 31.03	L = 51.84	L = 250.60	L = 250.80
R = 328.00	R = 98.00	R = 76.00	R = 5729.58	R = 5729.58
PC STA. = 62+58.50	PC STA. = 63+80.70	PC STA. = 64+11.73	PC STA. = 111+01.82	PC STA. = 113+52.43
PT STA. = 63+80.70	PT STA. = 64+11.73	PT STA. = 64+63.57	PRC STA. = 113+52.43	PT STA. = 116+03.22
			e = NC	e = NC

* SEE MULTI-USE TRAIL CROSSING DETAIL

REVISIONS DATE	DRMP DRMP, INC. 941 LAKE BALDWIN LANE ORLANDO, FLORIDA 32814 P 407.896.0594 F 407.896.4836 CERTIFICATE OF AUTHORIZATION NO. 2648	LAKE COUNTY FLORIDA	LAKE COUNTY DEPARTMENT OF PUBLIC WORKS ENGINEERING DIVISION		ROADWAY PLAN (2) CITRUS GROVE ROAD	SHEET NO. DD-1
			ROAD CITRUS GROVE ROAD	RSQ NO. 17-0003		



CONSTRUCT ONLY THE WEST PORTION OF S-2 AS SHOWN, EAST PORTION NOT TO BE CONSTRUCTED, SEE NEXT SHEET FOR ADDITIONAL DETAILS.

LEGEND
 6" CONCRETE PAVT.

CONSTRUCT 10" STABILIZED BASE COMPACTED TO 98% MODIFIED PROCTOR AS PER ASTM 1557 AND LBR=40; DRIVEWAY FILL MATERIAL SHALL BE COMPACTED TO 95% MODIFIED PROCTOR AS PER ASTM 1557; A LAYER OF SOIL SHALL BE PLACED ON TOP PRIOR TO GRASSING WITH BAHIA SOD.

CONSTRUCT 5' STABILIZED SHOULDER, SHOULDER AND ADJOINING DRIVEWAY EMBANKMENT SLOPE TO BE SODDED WITH BAHIA SOD.

* SEE MULTI-USE TRAIL CROSSING DETAIL

REVISIONS	DATE

DRMP
 ENGINEERS-SURVEYORS-PLANNERS-SCIENTISTS
 DRMP, INC.
 941 LAKE BALDWIN LANE
 ORLANDO, FLORIDA 32814
 P 407.896.0594 F 407.896.4836
 CERTIFICATE OF AUTHORIZATION NO. 2648

LAKE COUNTY
 FLORIDA

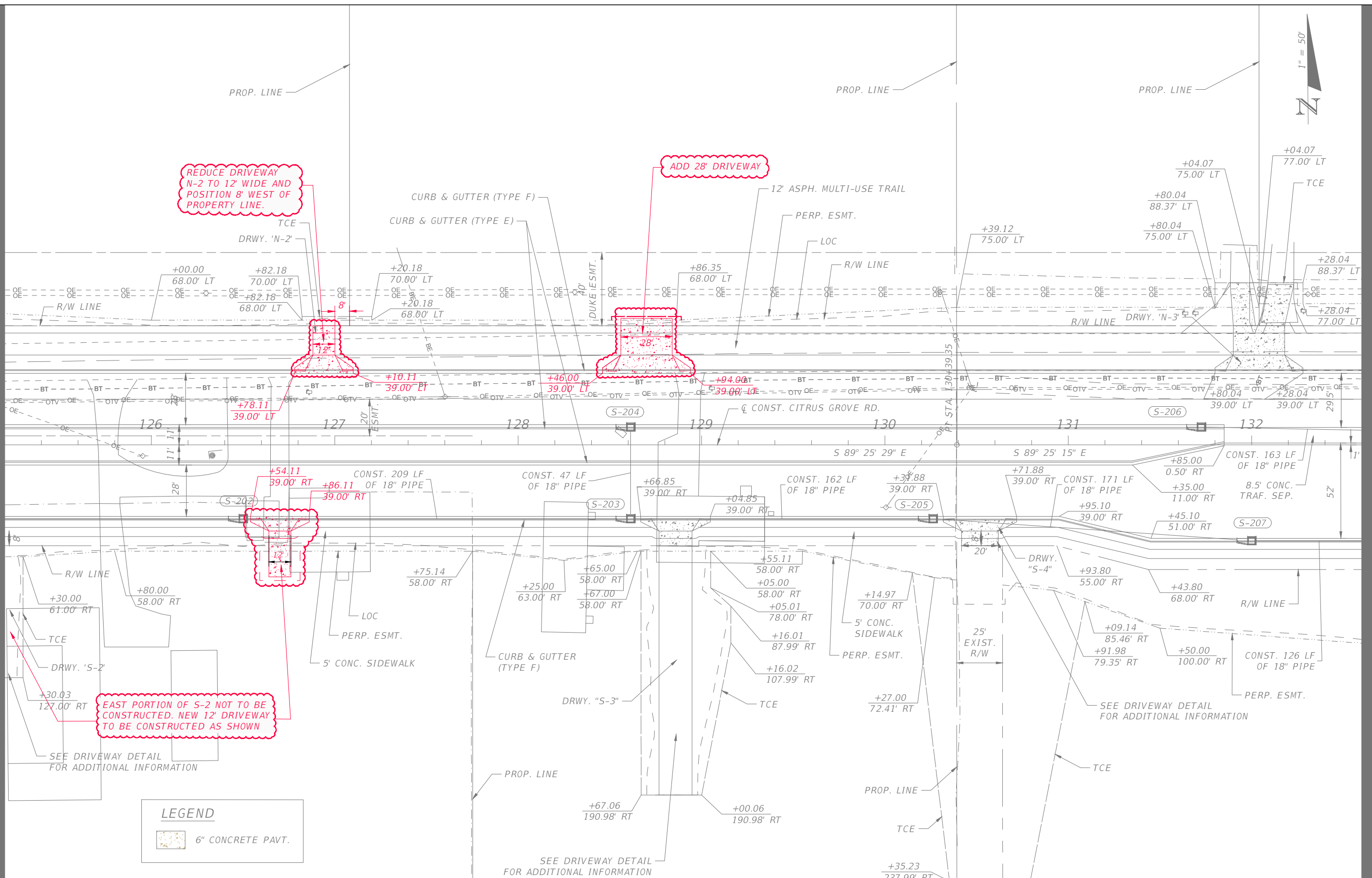
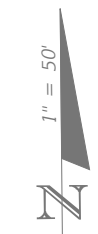
LAKE COUNTY
 DEPARTMENT OF PUBLIC WORKS
 ENGINEERING DIVISION

ROAD	RSO NO.
CITRUS GROVE ROAD	17-0003

COLETTE MOSS, P.E. LICENSE NO. 48263
 DATE:

ROADWAY PLAN (3)
CITRUS GROVE ROAD

SHEET NO.
 DD-2



REDUCE DRIVEWAY N-2 TO 12' WIDE AND POSITION 8' WEST OF PROPERTY LINE.

ADD 28' DRIVEWAY

EAST PORTION OF S-2 NOT TO BE CONSTRUCTED. NEW 12' DRIVEWAY TO BE CONSTRUCTED AS SHOWN

LEGEND

6" CONCRETE PAVT.

REVISIONS	DATE

DRMP
 ENGINEERS-SURVEYORS-PLANNERS-SCIENTISTS
 DRMP, INC.
 941 LAKE BALDWIN LANE
 ORLANDO, FLORIDA 32814
 P 407.896.0594 F 407.896.4836
 CERTIFICATE OF AUTHORIZATION NO. 2648

LAKE COUNTY
 FLORIDA

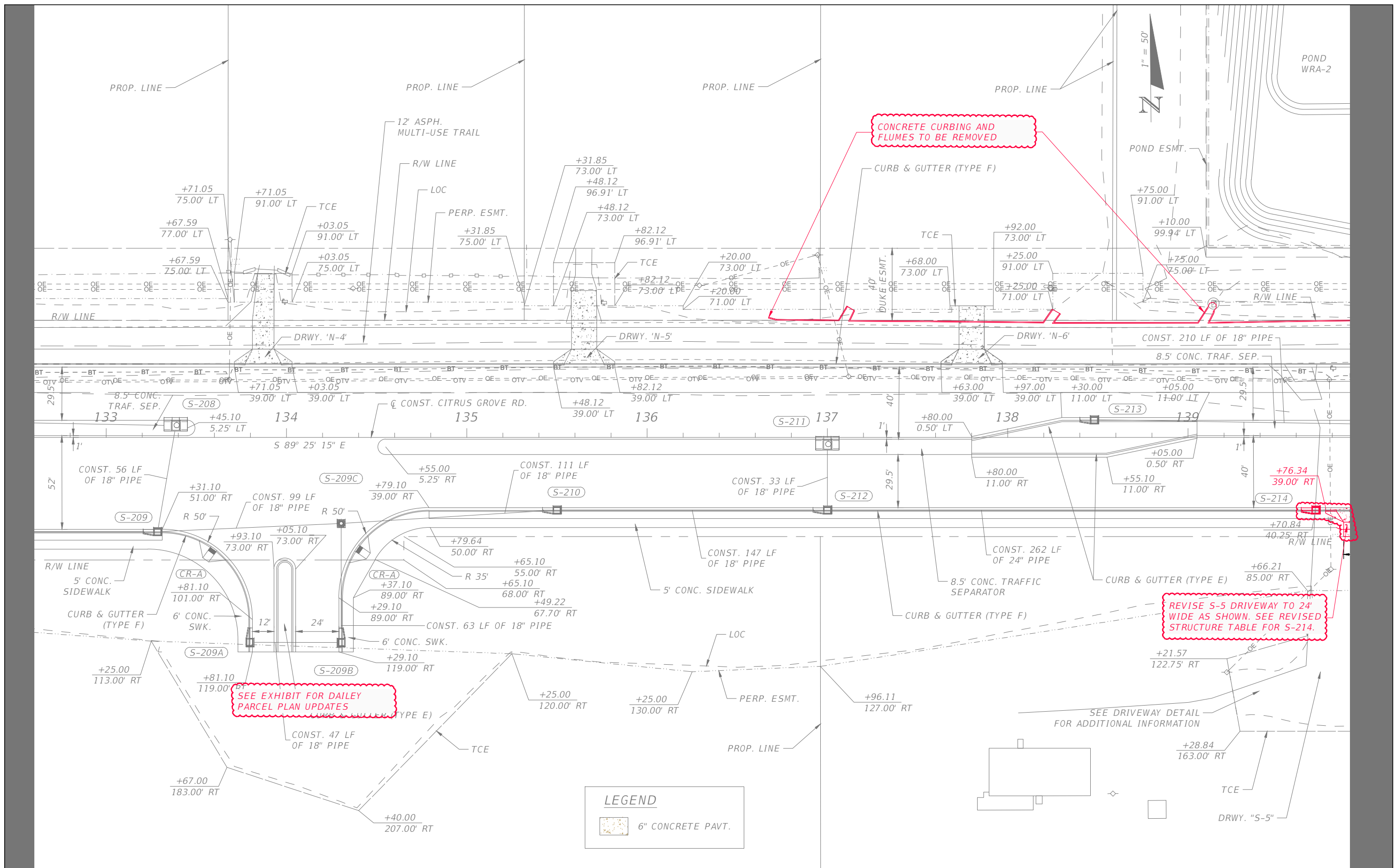
LAKE COUNTY
 DEPARTMENT OF PUBLIC WORKS
 ENGINEERING DIVISION

ROAD	RSQ NO.
CITRUS GROVE ROAD	17-0003

COLETTE MOSS, P.E. LICENSE NO. 48263
 DATE:

ROADWAY PLAN (4)
 CITRUS GROVE ROAD

SHEET NO.
 DD-3



REVISIONS	DATE

DRMP
 ENGINEERS-SURVEYORS-PLANNERS-SCIENTISTS
 DRMP, INC.
 941 LAKE BALDWIN LANE
 ORLANDO, FLORIDA 32814
 P 407.896.0594 F 407.896.4836
 CERTIFICATE OF AUTHORIZATION NO. 2648



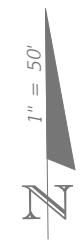
LAKE COUNTY
 DEPARTMENT OF PUBLIC WORKS
 ENGINEERING DIVISION

ROAD	RSQ NO.
CITRUS GROVE ROAD	17-0003

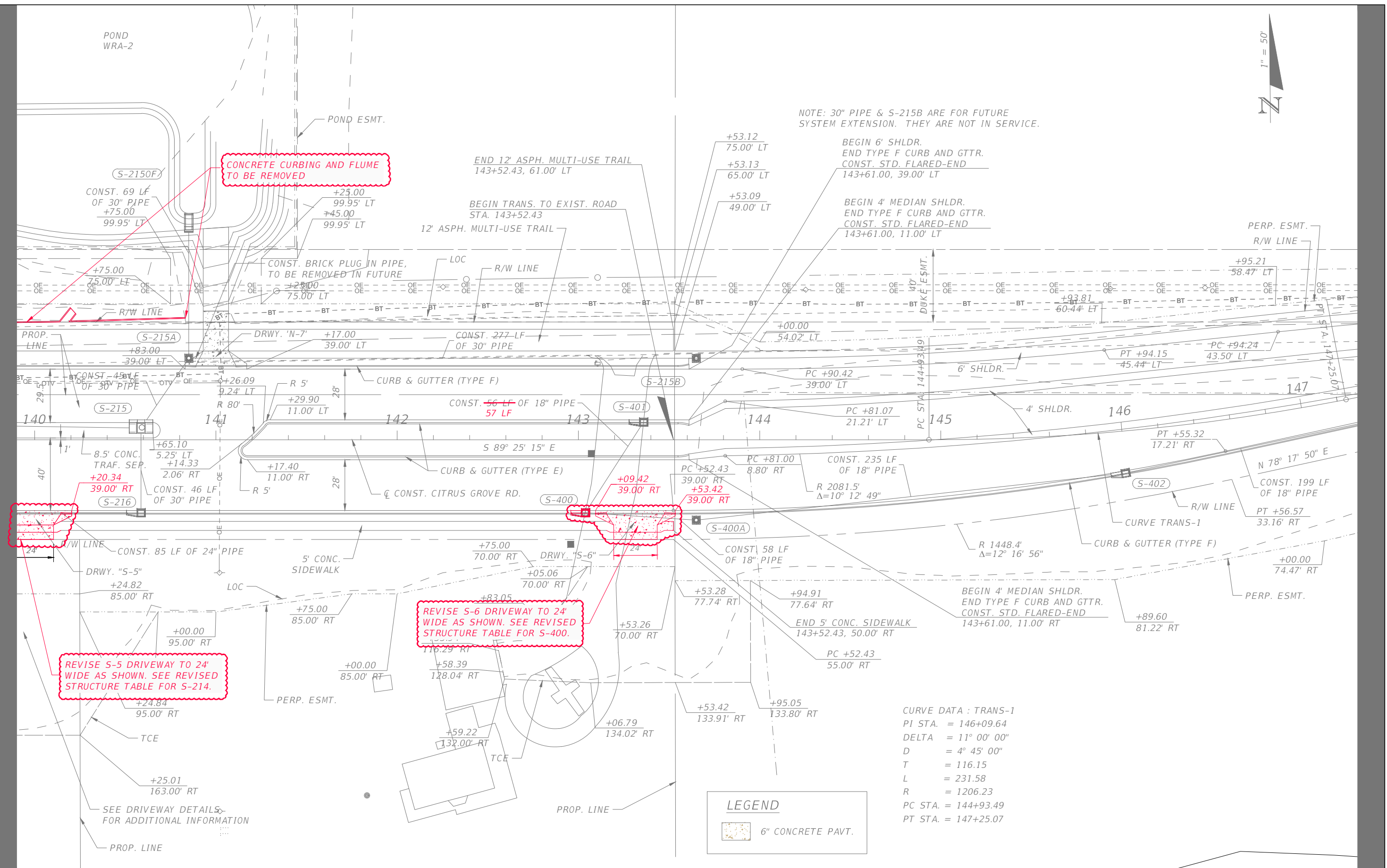
COLETTE MOSS, P.E. LICENSE NO. 48263
 DATE:

ROADWAY PLAN (5)
 CITRUS GROVE ROAD

SHEET NO.
 DD-4



NOTE: 30" PIPE & S-215B ARE FOR FUTURE SYSTEM EXTENSION. THEY ARE NOT IN SERVICE.



CURVE DATA : TRANS-1
 PI STA. = 146+09.64
 DELTA = 11° 00' 00"
 D = 4° 45' 00"
 T = 116.15
 L = 231.58
 R = 1206.23
 PC STA. = 144+93.49
 PT STA. = 147+25.07

LEGEND

6" CONCRETE PAVT.

REVISE S-5 DRIVEWAY TO 24' WIDE AS SHOWN. SEE REVISED STRUCTURE TABLE FOR S-214.

REVISE S-6 DRIVEWAY TO 24' WIDE AS SHOWN. SEE REVISED STRUCTURE TABLE FOR S-400.

CONCRETE CURBING AND FLUME TO BE REMOVED

REVISIONS	DATE

DRMP
 ENGINEERS-SURVEYORS-PLANNERS-SCIENTISTS
 DRMP, INC.
 941 LAKE BALDWIN LANE
 ORLANDO, FLORIDA 32814
 P 407.896.0594 F 407.896.4836
 CERTIFICATE OF AUTHORIZATION NO. 2648

LAKE COUNTY
 FLORIDA

LAKE COUNTY
 DEPARTMENT OF PUBLIC WORKS
 ENGINEERING DIVISION

ROAD	RSQ NO.
CITRUS GROVE ROAD	17-0003

COLETTE MOSS, P.E. LICENSE NO. 48263
 DATE:

ROADWAY PLAN (6)
 CITRUS GROVE ROAD

SHEET NO.
 DD-5

S-211
 STA 137+00.00 (4.00 Rt.)
 Const. Index No. 425-022 - Curb
 Inlet Type 7
 EOP Elev. 158.93
 FL 154.70 S

S-212
 STA 137+00.00 (40.25 Rt.)
 Const. Index No. 425-021 - Curb Inlet
 Type 5 (Right) with Rectangular
 Structure Bottom
 EOP Elev. 157.62
 FL 153.20 W
 FL 153.20 N
 FL 147.60 E

S-213
 STA 138+48.00 (9.75 Lt.)
 Const. Index No. 425-021 - Curb Inlet
 Type 5 (Right) with Rectangular
 Structure Bottom
 EOP Elev. 150.24
 FL 140.30 E

S-214 STA 139+70.84 (40.25 Rt.)
~~STA 139+76.84 (40.25 Rt.)~~
 Const. Index No. 425-021 - Curb Inlet
 Type 5 (Right) with Rectangular
 Structure Bottom
 EOP Elev. ~~141.01~~ 141.37
 FL 136.10 W
 FL 129.80 E

S-215
 STA 140+58.60 (6.50 Lt.)
 Const. Index No. 425-022 - Curb
 Inlet Type 7
 EOP Elev. 137.72
 FL 130.10 W
 FL 129.20 S
 FL 129.20 NE

S-216
 STA 140+58.60 (40.25 Rt.)
 Const. Index No. 425-021 - Curb Inlet
 Type 5 (Right) with Rectangular
 Structure J-Bottom (4'x4')
 EOP Elev. 136.10
 FL 129.70 W
 FL 129.30 N

S-215A
 STA 140+85.00 (45.00 Lt.)
 Const. Index No. 425-001 - Type 8
 Manhole (Concentric Cone with 1 or
 2-Piece Cover (Center), Rectangular
 J-Bottom (4'x4')
 Rim Elev. 137.12
 FL 129.10 SW
 FL 129.10 N
 FL 129.10 E PLUGGED

S-2150F
 STA 140+85.00 (115.85 Lt.)
 Const. Index No. 430-011 - U-Type
 Concrete Endwall Without Baffles -
 15-30 inch Dia. Pipe (1:3 Slope)
 FL Elev. 129.00

S-215B
 STA 143+65.00 (44.97 Lt.)
 Const. Index No. 425-001 - Type 8
 Manhole (Concentric Cone with 1 or
 2-Piece Cover (Center), Rectangular
 J-Bottom (4'x4')
 Rim Elev. 120.65
 FL 115.00 W

S-400 STA 143+03.77 (40.25 Rt.)
~~STA 143+06.27 (40.25 Rt.)~~
 Const. Index No. 425-021 - Curb Inlet
 Type 5 (Right) with Round Structure
 Bottom
 EOP Elev. ~~121.24~~ 121.39
 FL 115.80 NE
 FL 111.20 E

S-401
 STA 143+35.93 (9.75 Lt.)
 Const. Index No. 425-021 - Curb Inlet
 Type 5 (Right) with Rectangular
 Structure Bottom
 EOP Elev. 120.96
 FL 116.00 SW

S-400A
 STA 143+65.00 (44.33 Rt.)
 Const. Index No. 425-001 - Type 8
 Manhole (Concentric Cone with 1 or
 2-Piece Cover (Center), Rectangular
 Bottom)
 Rim Elev. 118.10
 FL 111.00 W
 FL 108.50 E

S-402
 STA 146+00.00 (23.16 Rt.)
 Const. Index No. 425-021 - Curb Inlet
 Type 5 (Right) with Rectangular
 Structure Bottom
 EOP Elev. 105.82
 FL 101.40 W
 FL 97.70 E

S-403
 STA 148+00.00 (13.29 Rt.)
 Const. Index No. 425-021 - Curb Inlet
 Type 5 (Right) with Rectangular
 Structure Bottom
 EOP Elev. 101.83
 FL 97.40 W
 FL 97.40 E

S-404
 STA 148+37.00 (13.25 Rt.)
 Const. Index No. 425-021 - Curb Inlet
 Type 6 with Rectangular Structure
 Bottom
 EOP Elev. 101.73
 FL 97.30 W
 FL 97.30 E
 FL 97.30 N

S-4040F
 STA 148+47.35 (61.98 Lt.)
 Const. Index No. 430-011 - U-Type
 Concrete Endwall Without Baffles -
 15-30 inch Dia. Pipe (1:4 Slope)
 FL Elev. 97.00

S-405
 STA 148+75.19 (13.25 Rt.)
 Const. Index No. 425-021 - Curb Inlet
 Type 5 (Left) with Rectangular
 Structure J-Bottom (5'x5')
 Structure Has Internal Diagonal Weir
 EOP Elev. 101.84
 Weir Elev. 99.00
 FL 97.40 W
 FL 90.10 S

S-406
 STA 148+73.39 (25.09 Rt.)
 Const. Index No. 430-011 - U-Type
 Concrete Endwall Without Baffles -
 15-30 inch Dia. Pipe (1:2 Slope)
 FL Elev. 90.00

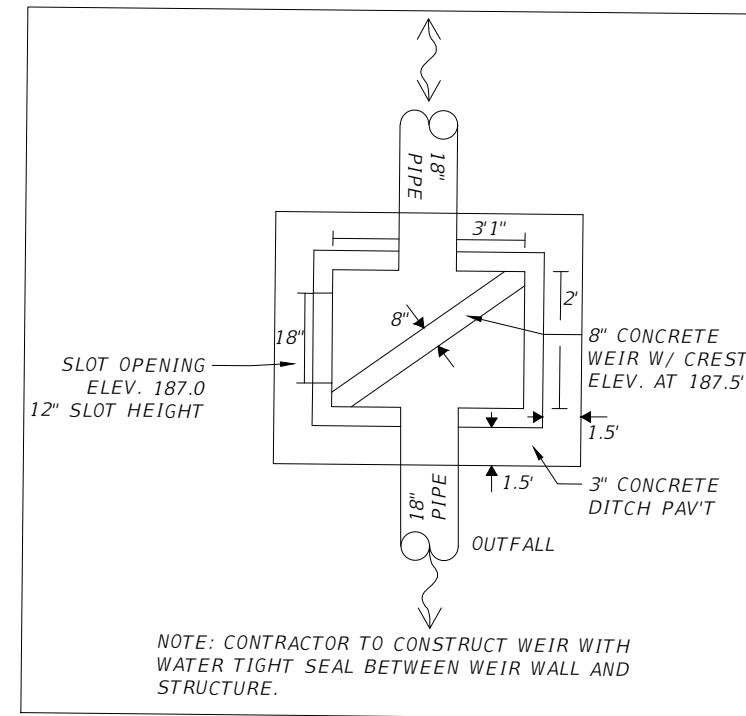
S-300
 STA 1009+17.20 (2.66 Rt.)
 Const. Index No. 425-001 - Type 8 Manhole
 (Concentric Cone with 1 or 2-Piece Cover
 (Center), Round Bottom)
 Rim Elev. 202.77
 FL 197.03 E
 Exist. FL 197.03 S

S-301
 STA 1009+17.20 (10.75 Rt.)
 Const. Index No. 425-022 - Curb
 Inlet Type 7
 EOP Elev. 202.65
 FL 197.10 N
 FL 197.10 W

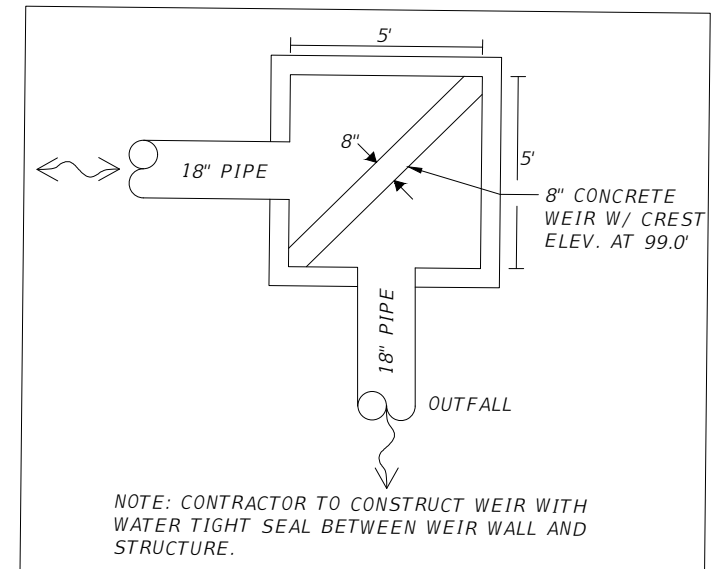
S-302
 STA 1009+36.18 (10.75 Rt.)
 Const. Index No. 425-022 - Curb
 Inlet Type 7
 EOP Elev. 203.55
 FL 199.00 N
 FL 197.20 S

S-303
 STA 1012+02.75 (4.75 Rt.)
 Const. Index No. 425-022 - Curb
 Inlet Type 7
 EOP Elev. 209.85
 FL 204.00 N
 FL 204.00 S



S-304
 STA 1015+00.00 (5.51 Lt.)
 Const. Index No. 425-052 - Ditch
 Bottom Inlet - Type D w/ Traversable
 Slots (BK)
 Grate Elev. 213.13
 FL 208.00 S
 Exist. FL 209.03 N

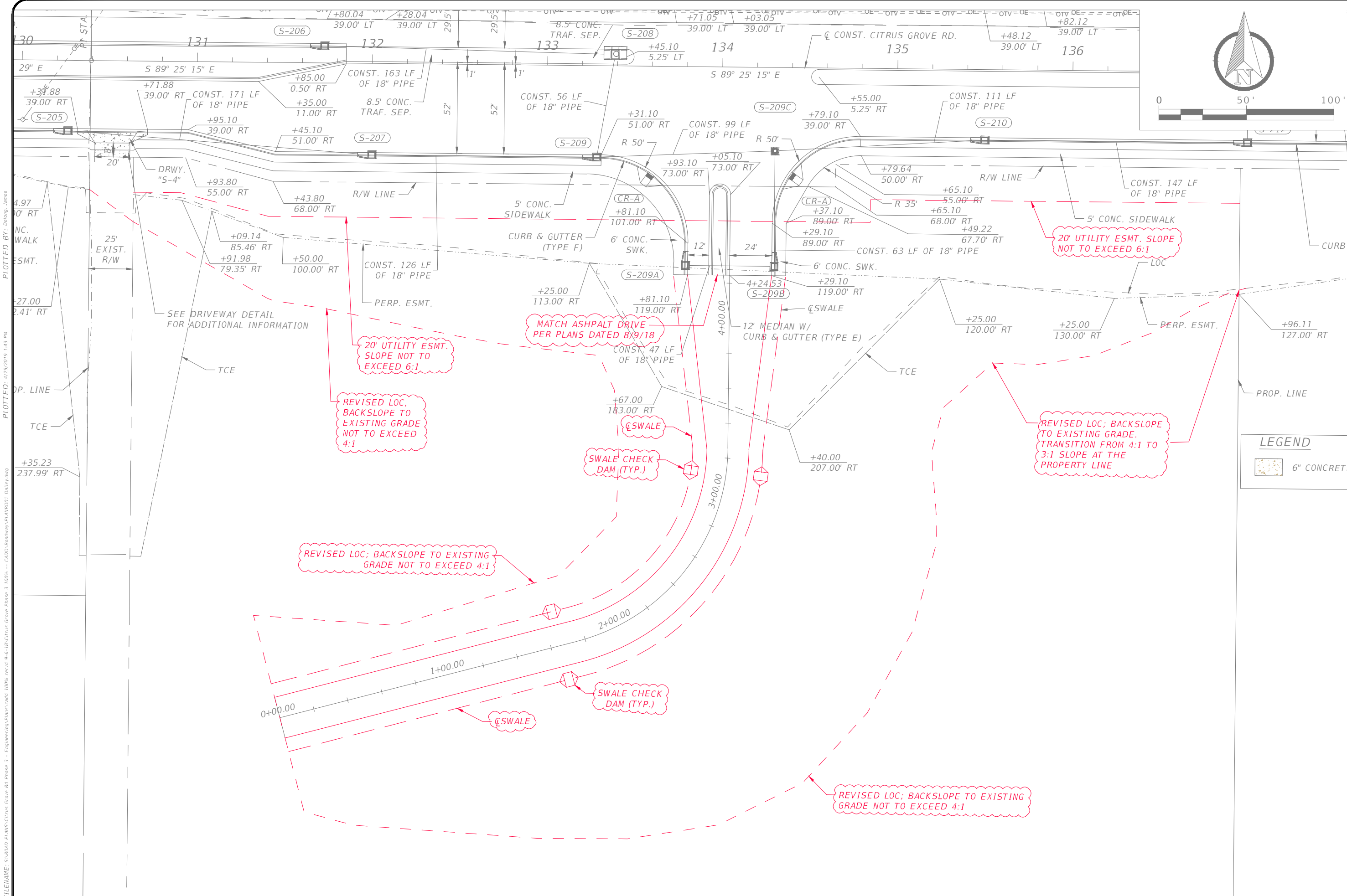


INTERNAL WEIR DETAIL S-129
 N.T.S.

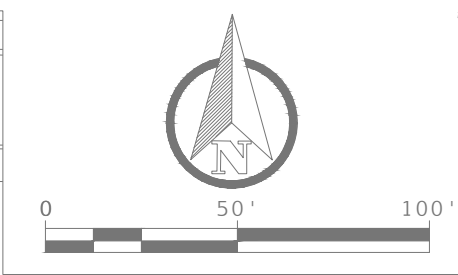


INTERNAL WEIR DETAIL S-405
 N.T.S.

REVISIONS	DATE	 DRMP <small>ENGINEERS-SURVEYORS-PLANNERS-SCIENTISTS</small> DRMP, INC. 941 LAKE BALDWIN LANE ORLANDO, FLORIDA 32814 P 407.896.0594 F 407.896.4836 CERTIFICATE OF AUTHORIZATION NO. 2648	 LAKE COUNTY FLORIDA	LAKE COUNTY DEPARTMENT OF PUBLIC WORKS ENGINEERING DIVISION		DRAINAGE STRUCTURE TABULATION (2)	SHEET NO.
				ROAD	RSO NO.		JOHN L. MINTON, P.E. LICENSE NO. 54657
				CITRUS GROVE ROAD	17-0003	DATE:	



FILENAME: S:\ROAD PLANS\Citrus Grove Rd Phase 3 - Engineering\Plans\Cadd 100% recd 9-4-18\Citrus Grove Phase 3 100% -- CADD\Roadway\PLAN\DD01 Dailey.dwg
 PLOTTED BY: Delong, James
 DATE: 4/25/2019 1:43 PM



SIGNATURE

ALAN W. KIRKLAND P.E. NO. 61729

DEPARTMENT OF PUBLIC WORKS
ENGINEERING DIVISION

LAKE COUNTY, FL

350 N. SINCLAIR AVE., TAVARES, FLORIDA 32778

REVISION:	DATE:
S. -6	
T. -225	
R. -26E	

SURVEYED:	DATE:	DESIGNED:	DATE:	DRAWN:	DATE:	APPROVED:	DATE:
	4/25/19	AK	4/25/19	DD	4/25/19	AK	4/25/19

LEGEND

6" CONCRET

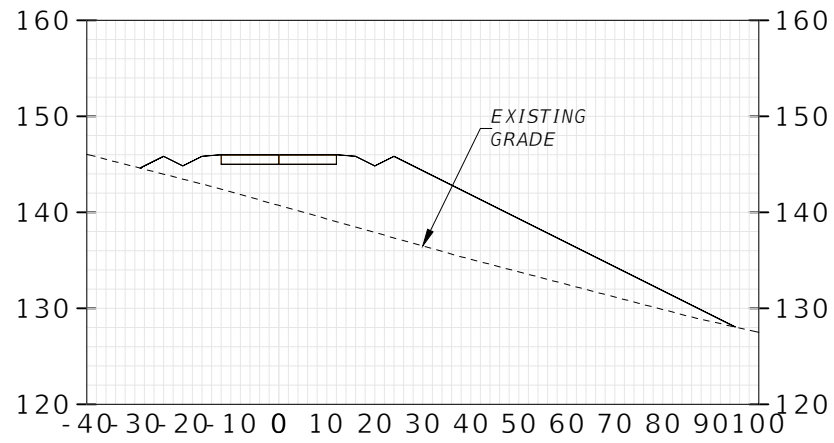
Citrus Grove Road Phase III
Dailey Driveway Extension
PLAN
DRAFT FOR REVIEW ONLY

JOB NO.:

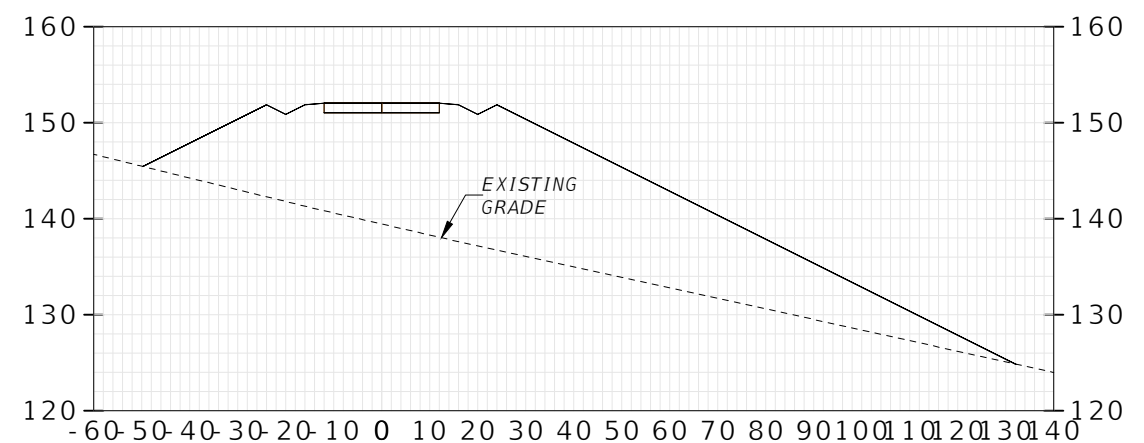
SHEET: DD-7

HORIZONTAL SCALE 1"=40'
VERTICAL SCALE 1"=20'

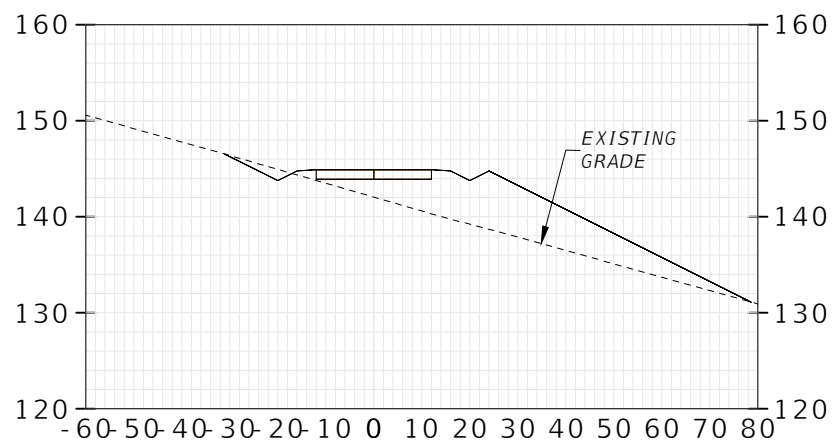
1+00.00



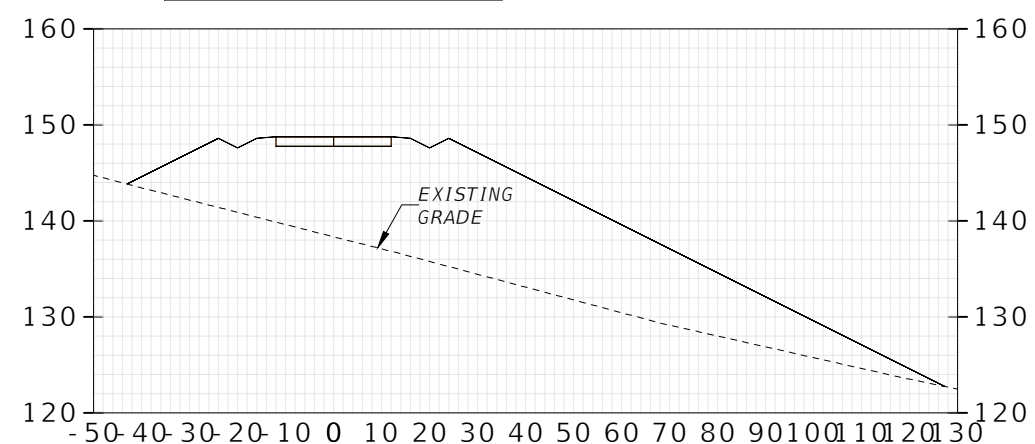
2+50.00



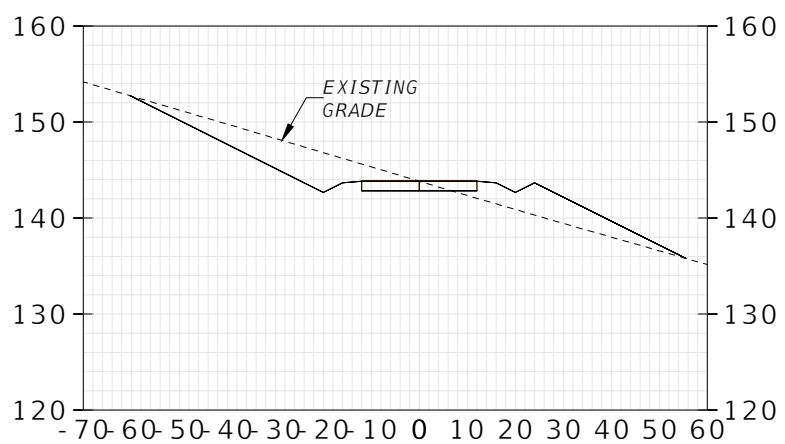
0+50.00



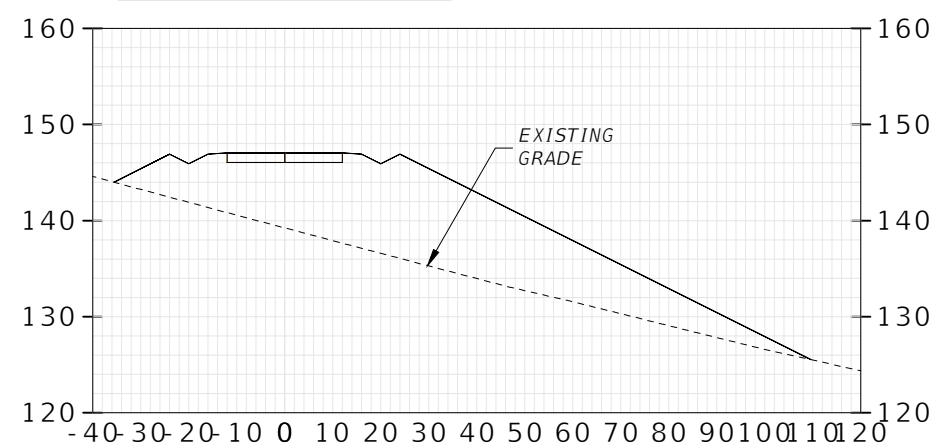
2+00.00



0+00.00




1+50.00



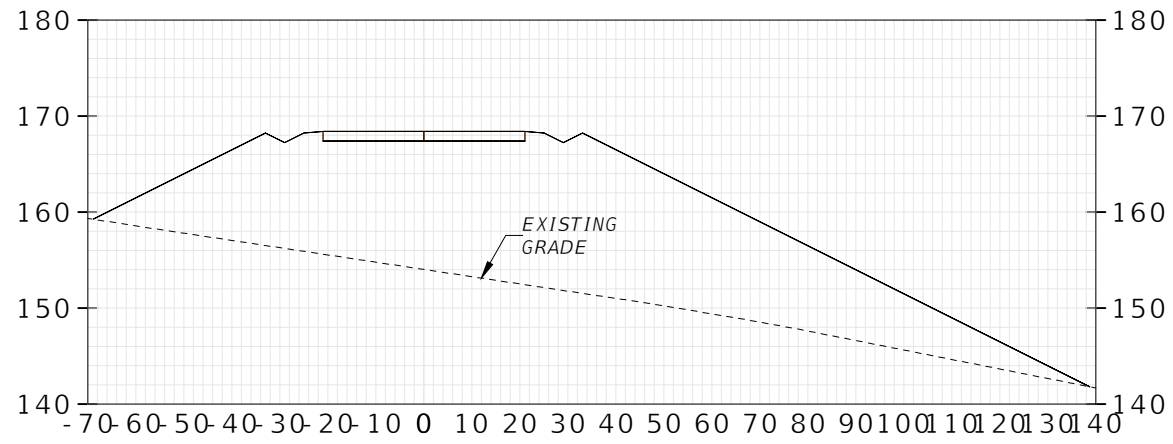
ALL BACK SLOPES 4:1 UNLESS OTHERWISE NOTED

FILENAME: S:\ROAD PLANS\Citrus Grove Rd Phase 3 - Engineering\Plans\Cadd 100% cecid 9-ft-18-Citrus Grove Phase 3 100% -- CADD\Roadway\MOD\001 Oakley.dwg PLOTTED BY: Delong, James PLOTTED: 4/25/2019 1:49 PM

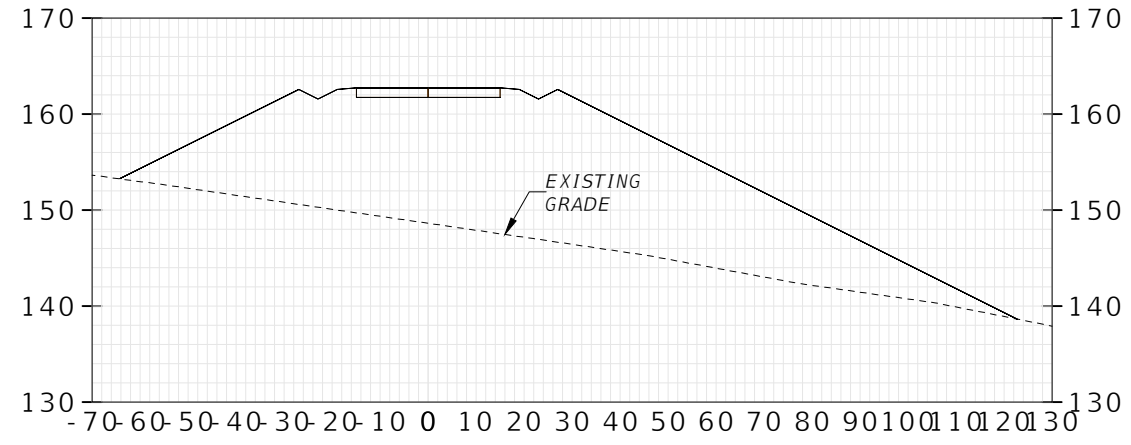
SIGNATURE		ALAN W. KIRKLAND P.E. NO. 61729	
DEPARTMENT OF PUBLIC WORKS ENGINEERING DIVISION  350 N. SINCLAIR AVE., TAVARES, FLORIDA 32778			
REVISION:	DATE:	S. - 18&19	T. - 285
R. - 23E	R. - 23E	DATE: 4/25/19	DATE: 4/25/19
SURVEYED: VALUE	FIELD BOOK:	DESIGNED: VALUE	DRAWN: VALUE
DATE: 4/25/19	PAGE:	DATE: 4/25/19	DATE: 4/25/19
APPROVED: VALUE	DATE: 4/25/19	APPROVED: VALUE	DATE: 4/25/19
VALUE		VALUE	
CROSS SECTIONS			
DRAFT FOR REVIEW ONLY			
JOB NO.:			
SHEET: DD-9			

HORIZONTAL SCALE 1"=40'
 VERTICAL SCALE 1"=20'

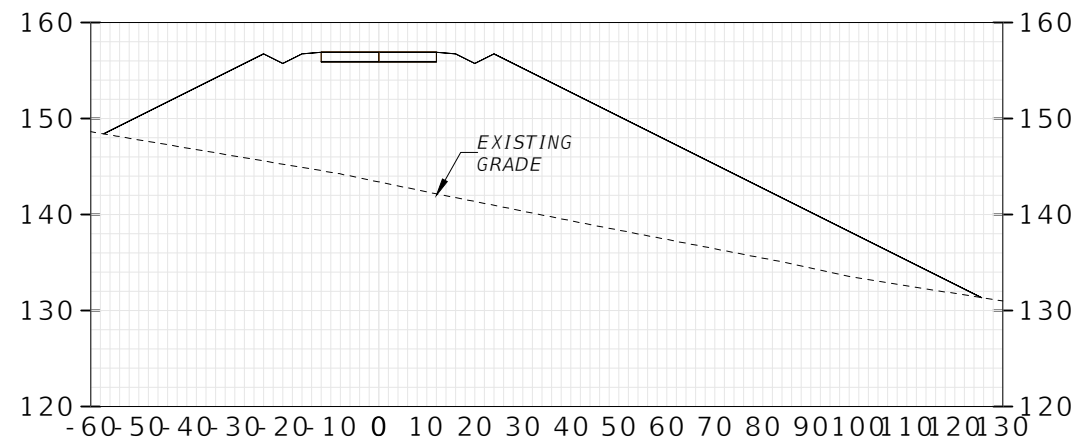
4+00.00



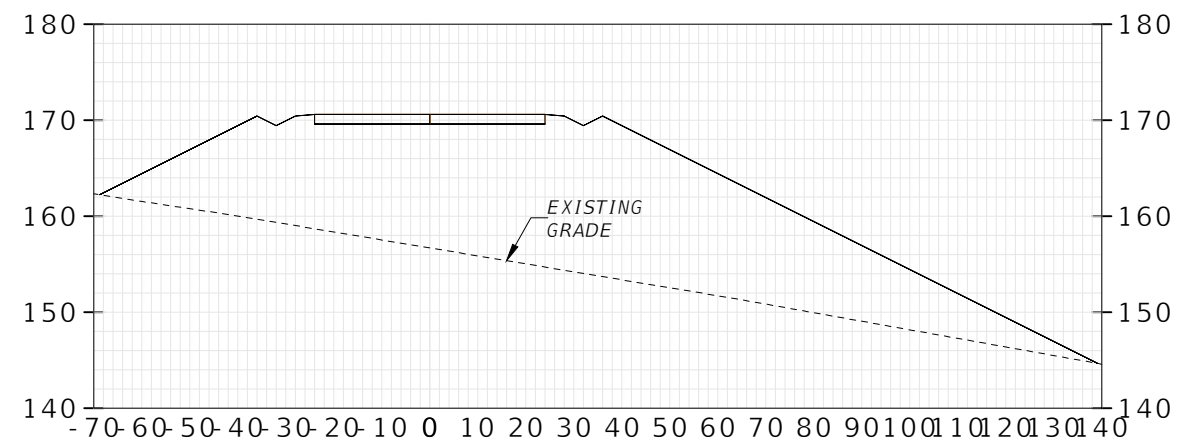
3+50.00



3+00.00



4+24.53



ALL BACK SLOPES 4:1 UNLESS OTHERWISE NOTED

FILENAME: S:\ROAD PLANS\Citrus Grove Rd Phase 3 - Engineering\Plans\Cadd 100% recid 9-ft-18-Citrus Grove Phase 3 100% -- CADD\Roadway\MOD\001 0arley.dwg PLOTTED BY: Delong, James PLOTTED: 4/25/2019 1:32 PM

SIGNATURE		ALAN W. KIRKLAND P.E. NO. 61729	
DEPARTMENT OF PUBLIC WORKS ENGINEERING DIVISION			
350 N. SINCLAIR AVE., TAVARES, FLORIDA 32778			
REVISION:	DATE:	S. - 18&19	T. - 285
		R. - 23E	
SURVEYED: VALUE	DATE: 4/25/19	FIELD BOOK:	PAGE:
DESIGNED: VALUE	DATE: 4/25/19	DRAWN: VALUE	DATE: 4/25/19
APPROVED: VALUE	DATE: 4/25/19		
VALUE		VALUE	
CROSS SECTIONS			
DRAFT FOR REVIEW ONLY			
JOB NO.:			
SHEET:			
DD-10			