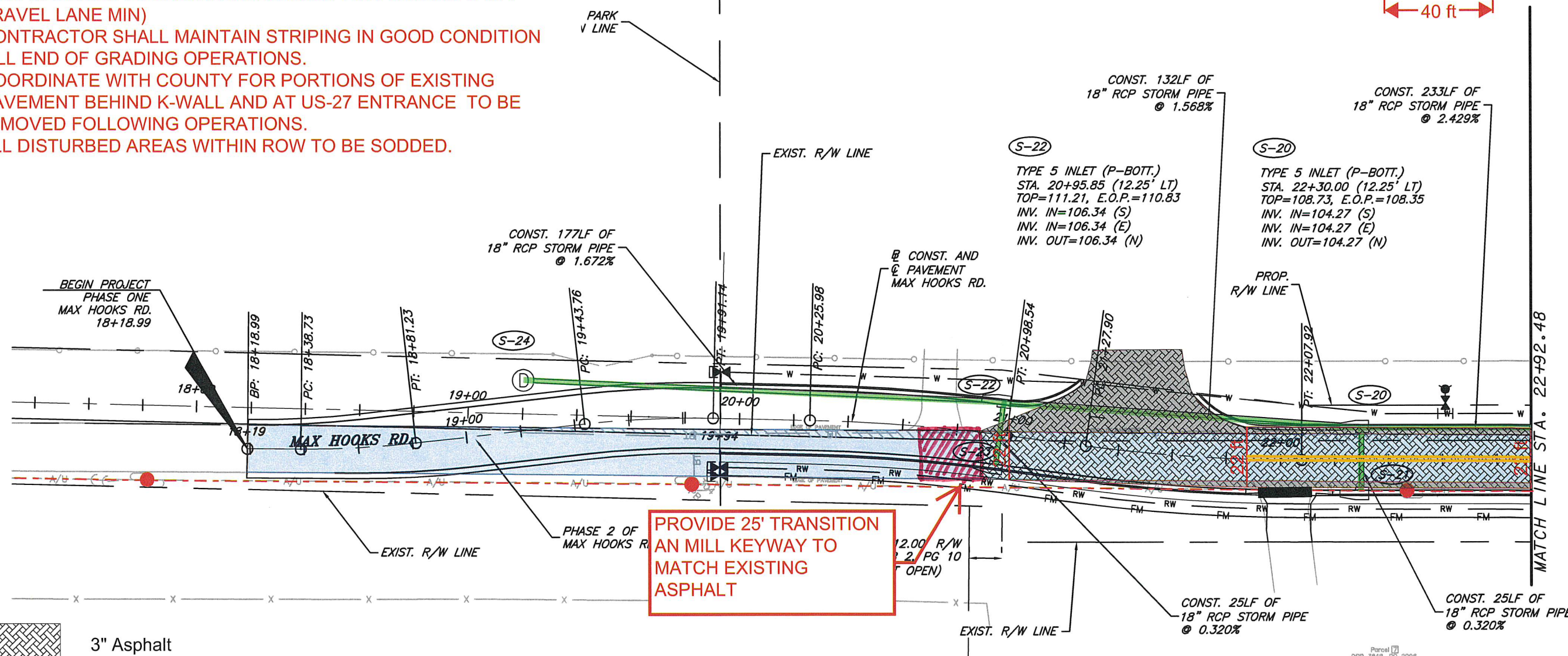
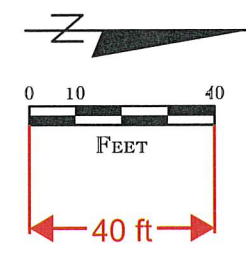
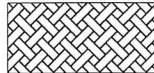







NOTES:

1. A PRE CONSTRUCTION MEETING WITH COUNTY IS REQUIRED FOLLOWING PERMIT APPROVAL, PRIOR TO ROAD WORK AND MOT
2. DRIVEWAY TRANSITIONS TO BE INSTALLED IN LIKE AND KIND MATERIAL TO EXISTING DRIVEWAY AND EXTEND 5' OFF TRAVEL LANE MIN)
3. CONTRACTOR SHALL MAINTAIN STRIPING IN GOOD CONDITION TILL END OF GRADING OPERATIONS.
4. COORDINATE WITH COUNTY FOR PORTIONS OF EXISTING PAVEMENT BEHIND K-WALL AND AT US-27 ENTRANCE TO BE REMOVED FOLLOWING OPERATIONS.
5. ALL DISTURBED AREAS WITHIN ROW TO BE SODDED.



-  3" Asphalt
-  10" Limerock Base w/6" LBR40 Subbase
-  Existing
-  K-Type w/ Shoulder
-  Transition

 Asphalt curb with tube delineators @ 5' oc

FDOT This Certifies that **Ethan M. Newport**
 Has Completed a Florida Department of Transportation Approved Temporary Traffic Control (TTC) Advanced Course.
 Date Expires: 04/13/2021 Certificate # 27854
 Instructor: Gordon Burlison FDOT Provider # 36

T2 Center/University of Florida
 Phone: 352-273-1685
 2100 NE Waldo Road
 Gainesville, FL 32608
 T2ctt.ce.ufl.edu
 dkpage@ufl.edu

UF University of Florida
 Transportation Institute
 1115 University Blvd. SE
 Gainesville, FL 32608
 UNIVERSITY OF FLORIDA

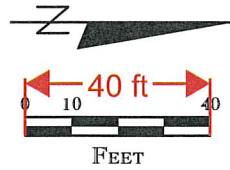
| DATE | REVISIONS | DATE | REVISIONS |
|------|-----------|------|-----------|
| | | | |

BESH
 BOOTH, ERN & STRAUSSMAN, HOTT, INC.
 ENGINEERS • SURVEYORS • LAND PLANNERS
 902 North Sinclair Ave.
 Tavares, Florida 32778
 www.beshinc.com
 Office: 352.343.8881
 Fax: 352.343.8486
 Certificate of Authorization Number: 27029
 DUANE K. BOOTH, P.E. LICENSE NO. 44631

| LAKE COUNTY | | |
|-------------|--------|----------------------|
| ROAD NO. | COUNTY | FINANCIAL PROJECT ID |
| M.H. | LAKE | TBD |

LAKE COUNTY
 MAX HOOKS ROAD PH. I.
 DRAINAGE PLAN SHEET
 STA. 18+18.99 TO STA. 22+92.48

SHEET NO.
 26



MATCH LINE STA. 22+92.48

MATCH LINE STA. 28+52.48

S-18
 TYPE 5 INLET (P-BOTT.)
 STA. 24+62.99 (12.25' LT)
 TOP=103.54, E.O.P.=103.16
 INV. IN=98.61 (S)
 INV. IN=98.61 (E)
 INV. OUT=98.61 (N)

S-26
 30" MITERED END SECTION
 W/ENERGY DISSIPATORS
 STA. 27+66.69 (61.49' LT)
 INV.=91.63

DS-1
 TYPE H INLET
 STA. 27+90.51 (108.77' LT)
 TOP=97.00
 INV. OUT=93.83

S-16
 TYPE 6 INLET (P-BOTT.)
 STA. 27+47.67 (12.25' LT)
 TOP=98.42, E.O.P.=98.04
 INV. IN=91.68 (N)
 INV. IN=93.50 (E)
 INV. IN=91.68 (S)
 INV. OUT=91.68 (W)

CONST. 233LF OF
 18" RCP STORM PIPE
 @ 2.429%

PROP.
 R/W LINE

CONST. 285LF OF
 18" RCP STORM PIPE
 @ 2.432%

CONST. AND
 PAVEMENT
 MAX HOOKS RD.

EXIST. R/W
 LINE

CONST. 43LF OF
 30" RCP STORM PIPE
 @ 0.116%

SOUTH LAKE REGIONAL PARK
 NORTH PROPERTY LINE

S-26

EXIST.
 R/W LINE

PI: 28+17.41

S-19
 TYPE 5 INLET (P-BOTT.)
 STA. 24+62.99 (12.25' RT)
 TOP=103.54, E.O.P.=103.16
 INV. OUT=98.69 (W)

CONST. 25LF OF
 18" RCP STORM PIPE
 @ 0.320%

EXIST. R/W
 LINE

CONST. 152LF OF
 24" RCP STORM PIPE
 @ 0.200%

S-17
 TYPE 6 INLET (P-BOTT.)
 STA. 27+47.67 (12.25' RT)
 TOP=98.42, E.O.P.=98.04
 INV. OUT=94.04 (W)

CONST. 25LF OF
 18" RCP STORM PIPE
 @ 2.160%

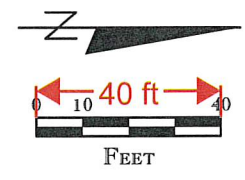
| DATE | REVISIONS | DATE | REVISIONS |
|------|-----------|------|-----------|
| | | | |

BESH
 BOOTH STRAUSMAN HOLT, INC.
 ENGINEERS • SURVEYORS • LAND PLANNERS
 902 North Sinclair Ave.
 Tavares, Florida 32778
 www.beshinc.com
 Office: 352.343.8481
 Fax: 352.343.8495
 Certificate of Authorization Number: 27029
 DUANE K. BOOTH, P.E. LICENSE NO. 44631

| LAKE COUNTY | | |
|-------------|--------|----------------------|
| ROAD NO. | COUNTY | FINANCIAL PROJECT ID |
| M.H. | LAKE | TBD |

LAKE COUNTY
 MAX HOOKS ROAD PH. I.
 DRAINAGE PLAN SHEET
 STA. 22+92.48 TO STA. 28+52.48

SHEET NO.
 27



S-14
 TYPE 5 INLET (P-BOTT.)
 STA. 29+00.00 (12.25' LT)
 TOP=98.93, E.O.P.=98.55
 INV. IN=91.98 (N)
 INV. IN=94.47 (E)
 INV. OUT=91.98 (S)

S-12
 TYPE 5 INLET (P-BOTT.)
 STA. 31+50.00 (12.25' LT)
 TOP=99.84, E.O.P.=99.46
 INV. IN=92.48 (N)
 INV. IN=95.38 (E)
 INV. OUT=92.48 (S)

CONST. 152LF OF
 24" RCP STORM
 PIPE @ 0.200%

CONST. 250LF OF
 24" RCP STORM
 PIPE @ 0.200%

CONST. 293LF OF
 24" RCP STORM
 PIPE @ 0.200%

CONST. 25LF OF
 18" RCP STORM
 PIPE @ 0.320%

CONST. AND
 PAVEMENT
 MAX HOOKS RD.


CONST. 25LF OF
 18" RCP STORM
 PIPE @ 0.320%

S-15
 TYPE 5 INLET (P-BOTT.)
 STA. 29+00.00 (12.25' RT)
 TOP=98.93, E.O.P.=98.55
 INV. OUT=94.55 (W)

S-13
 TYPE 5 INLET (P-BOTT.)
 STA. 31+50.00 (12.25' RT)
 TOP=99.84, E.O.P.=99.46
 INV. OUT=95.46 (W)

MATCH LINE STA. 28+52.48

MATCH LINE STA. 34+12.56

| | | | | | | | | | | | | | | |
|----------|--|-----------|--|----------------------|--|-----------|--|---|-------------|--|-----|---|-----------------|--|
| DATE | | REVISIONS | | DATE | | REVISIONS | |  | LAKE COUNTY | | | LAKE COUNTY MAX HOOKS ROAD PH. I. DRAINAGE PLAN SHEET STA. 28+52.48 TO STA. 34+12.56 | SHEET NO. 28 | |
| ROAD NO. | | COUNTY | | FINANCIAL PROJECT ID | | M.H. | | | LAKE | | TBD | | | |
| | | | | | | | | | | | | | | |

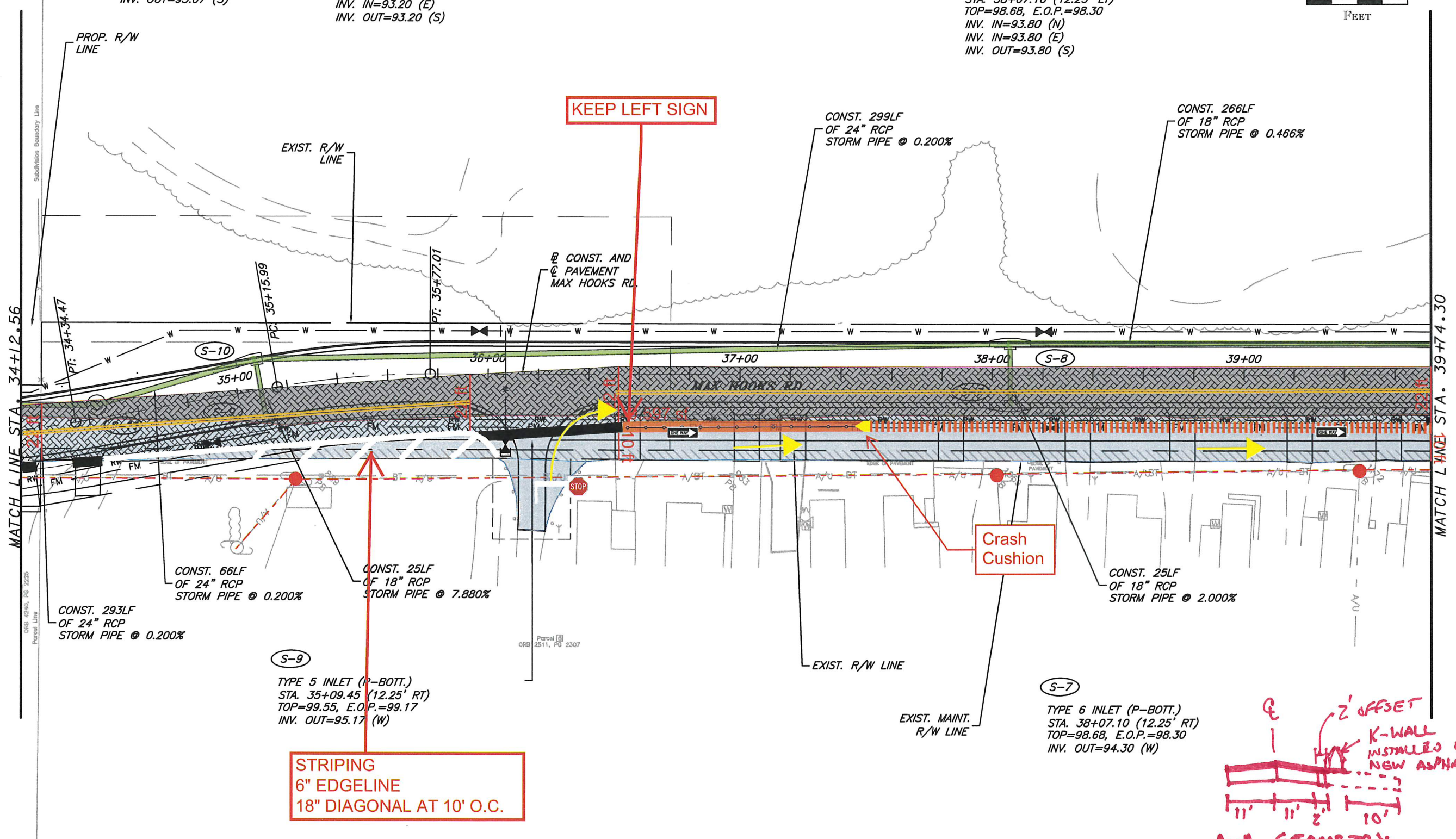
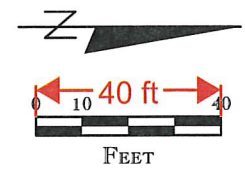
S-11
 MANHOLE (P-BOTT.)
 STA. 34+43.91 (5.28' LT)
 TOP=99.49
 INV. IN=93.07 (N)
 INV. OUT=93.07 (S)

S-10
 TYPE 5 INLET (P-BOTT.)
 STA. 35+09.45 (12.25' LT)
 TOP=99.55, E.O.P.=99.17
 INV. IN=93.20 (N)
 INV. IN=93.20 (E)
 INV. OUT=93.20 (S)

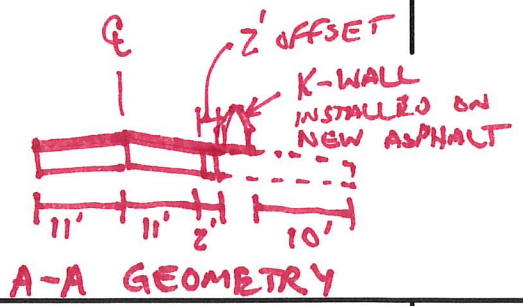
S-8
 TYPE 6 INLET (P-BOTT.)
 STA. 38+07.10 (12.25' LT)
 TOP=98.68, E.O.P.=98.30
 INV. IN=93.80 (N)
 INV. IN=93.80 (E)
 INV. OUT=93.80 (S)

S-9
 TYPE 5 INLET (P-BOTT.)
 STA. 35+09.45 (12.25' RT)
 TOP=99.55, E.O.P.=99.17
 INV. OUT=95.17 (W)

S-7
 TYPE 6 INLET (P-BOTT.)
 STA. 38+07.10 (12.25' RT)
 TOP=98.68, E.O.P.=98.30
 INV. OUT=94.30 (W)



STRIPING
 6" EDGELINE
 18" DIAGONAL AT 10' O.C.



| DATE | REVISIONS | DATE | REVISIONS |
|------|-----------|------|-----------|
| | | | |

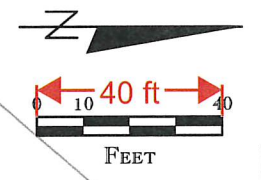
BESH
 BOOTH, ERN & STRAUSMAN, HOTT, INC.
 ENGINEERS • SURVEYORS • LAND PLANNERS
 902 North Sinclair Ave.
 Titusville, Florida 32781
 www.beshndll.com
 Office: 352.243.8481
 Fax: 352.243.8495
 Certificate of Authorization Number: 27029
 DUANE K. BOOTH, P.E. LICENSE NO. 44631

| LAKE COUNTY | | |
|-------------|--------|----------------------|
| ROAD NO. | COUNTY | FINANCIAL PROJECT ID |
| M.H. | LAKE | TBD |

LAKE COUNTY
 MAX HOOKS ROAD PH. I.
 DRAINAGE PLAN SHEET
 STA. 34+12.56 TO STA. 39+74.30

SHEET NO.
 29

S-6
 TYPE 5 INLET (P-BOTT.)
 STA. 40+72.68 (12.25' LT)
 TOP=99.50, E.O.P.=99.12
 INV. IN=95.04 (N)
 INV. IN=95.04 (E)
 INV. OUT=95.04 (S)



S-4
 TYPE 5 INLET (P-BOTT.)
 STA. 42+71.87 (12.25' LT)
 TOP=100.19, E.O.P.=99.81
 INV. IN=95.73 (N)
 INV. IN=95.73 (E)
 INV. OUT=95.73 (S)

CONST. 266LF OF
 18" RCP STORM
 PIPE @ 0.466%

CONST. 199LF OF
 18" RCP STORM
 PIPE @ 0.345%

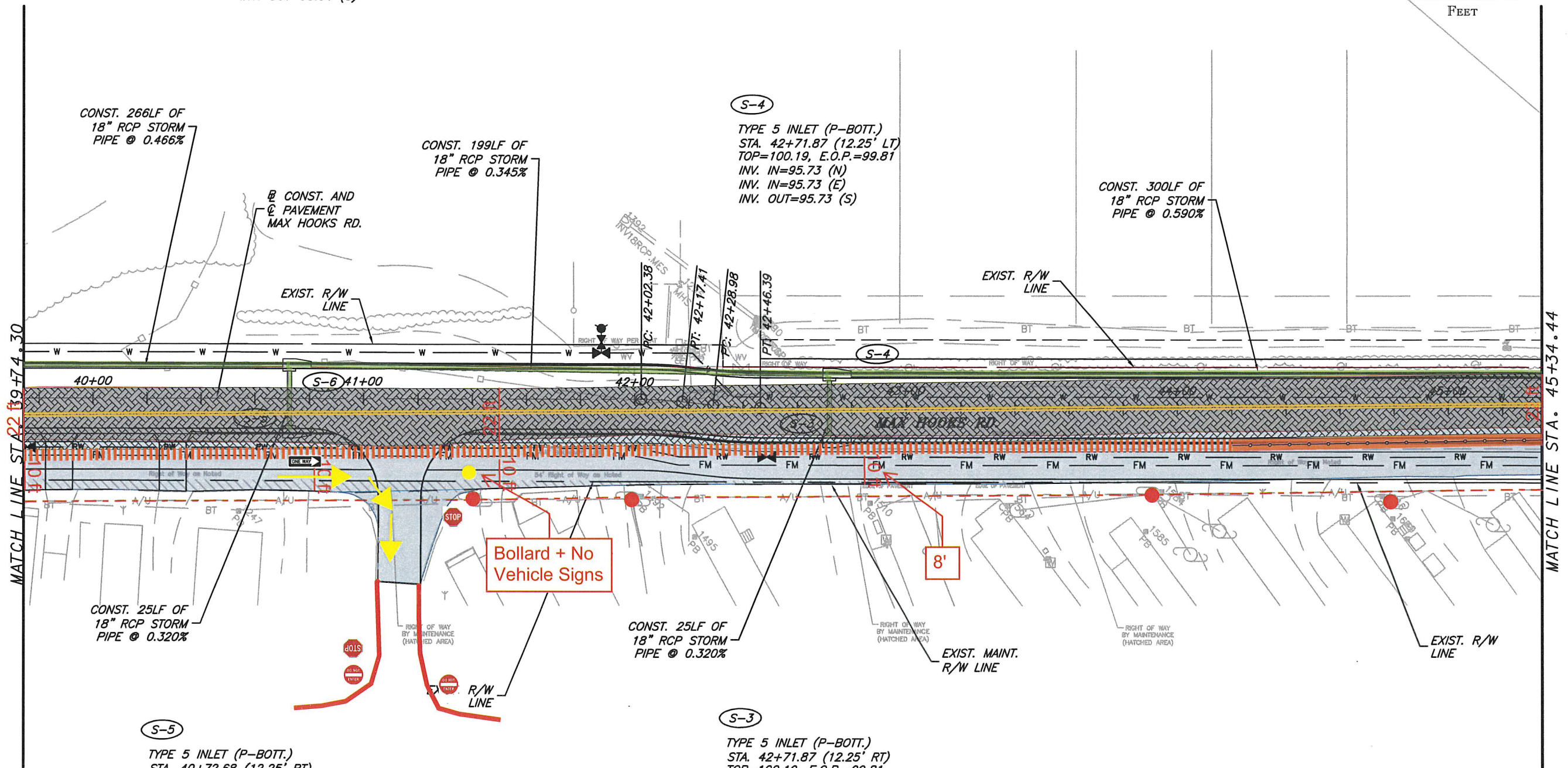
CONST. 300LF OF
 18" RCP STORM
 PIPE @ 0.590%

CONST. 25LF OF
 18" RCP STORM
 PIPE @ 0.320%

CONST. 25LF OF
 18" RCP STORM
 PIPE @ 0.320%

S-5
 TYPE 5 INLET (P-BOTT.)
 STA. 40+72.68 (12.25' RT)
 TOP=99.50, E.O.P.=99.12
 INV. OUT=95.12 (W)

S-3
 TYPE 5 INLET (P-BOTT.)
 STA. 42+71.87 (12.25' RT)
 TOP=100.19, E.O.P.=99.81
 INV. OUT=95.81 (W)



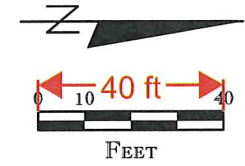
| DATE | REVISIONS | DATE | REVISIONS |
|------|-----------|------|-----------|
| | | | |

BESH
 BOOTH, ERN, STRAUGHAN, HOTT, INC.
 ENGINEERS • SURVEYORS • LAND PLANNERS
 902 North Sinclair Ave.
 Tavares, Florida 32778
 www.beshandl.com
 Office: 352.343.8481
 Fax: 352.343.8155
 Certificate of Authorization Number: 27029
 DUANE K. BOOTH, P.E. LICENSE NO. 44631

| LAKE COUNTY | | |
|-------------|--------|----------------------|
| ROAD NO. | COUNTY | FINANCIAL PROJECT ID |
| M.H. | LAKE | TBD |

LAKE COUNTY
 MAX HOOKS ROAD PH. I.
 DRAINAGE PLAN SHEET
 STA. 39+74.30 TO STA. 45+34.44

SHEET NO.
 30



S-2
 TYPE 5 INLET (P-BOTT.)
 STA. 45+71.87 (12.25' LT)
 TOP=104.26, E.O.P.=103.88
 INV. IN=99.80 (E)
 INV. OUT=97.50 (S)

CONST. 300LF OF
 18" RCP STORM
 PIPE @ 0.590%

CONST. 25LF OF
 18" RCP STORM
 PIPE @ 0.330%

CONST. AND
 PAVEMENT
 MAX HOOKS RD.

PAVEMENT TO BE MILLED
 WHERE MATCHING EXISTING
 IN FDOT ROW
 (FDOT PERMIT IS REQ'D FOR
 WORK IN ROW)

Bollard + No
 Vehicle Signs

MATCH LINE STA. 22+34.44

EXIST. R/W
 LINE
 END TRENCH DRAIN
 STA. 45+79.87
 (11.50' RT)
 STUB INTO
 S-1

S-1
 TYPE 5 INLET (P-BOTT.)
 STA. 45+71.87 (12.25' RT)
 TOP=104.26, E.O.P.=103.88
 INV. IN=102.87 (N) TRENCH DRAIN
 INV. OUT=99.88 (W)

CONST. 60LF OF FDOT
 TRENCH DRAIN TYPE II, PER
 FDOT STD. INDEX 206.
 4" WIDE BY 24" DEEP
 SLOPED @ 4.62% TOWARDS
 S-1

BEGIN TRENCH DRAIN
 STA. 46+38.01 (13.69' RT)
 TOP=107.65
 INV.=105.65

EXIST. STORM
 MANHOLE

EXIST. CATCH
 BASIN

EXIST. 36"
 MES

S.R. 50

| | | | | | | | | | |
|-------------|------------------|-------------|------------------|---|--------------------|--------|----------------------|---|--------------|
| DATE | REVISIONS | DATE | REVISIONS |  | LAKE COUNTY | | | LAKE COUNTY MAX HOOKS ROAD PH. I. DRAINAGE PLAN SHEET STA. 45+34.44 TO S.R 50 | SHEET NO. |
| | | | | | ROAD NO. | COUNTY | FINANCIAL PROJECT ID | | |
| | | | | | M.H. | LAKE | TBD | | 31 |