

## MEETING MINUTES

---

**Copies to:** Rafael Jimenez, CEMEX  
Dam Nguyen, WGI  
Mark Kovach, WGI

**Date:** March 21, 2018

**Project:** Schofield Road from US 27 to  
Lake-Orange County Line

**Project No:** WGI 3110.00

**Meeting Place:** Lake County Public Works  
350 Sinclair Avenue  
Tavares, FL

**Meeting Date:** March 1, 2018

**Meeting Time:** 1:00 pm

**Participants:** See Sign-In Sheet

**Purpose:** Design Kick Off Meeting (revised)

---

The following are the minutes of the meeting, which will be considered approved and final if attendee comments are not received by Wantman Group, Inc. (WGI) within two weeks from the issue date noted above.

### General Requirements

- No project webpage required
- No formal Public Involvement Plan required
  - Coordinate with adjacent property owners early and often
  - Maintain access for adjacent property owners
- Monthly progress meetings will primarily be via teleconference/webinar
  - Lake Co will request in-person meetings on as-needed basis
- Plan format
  - 1"=40' scale plan/profile sheets, 11x17 size
  - Terrain may require use of separate plan and profile sheets
  - Cross sections every 100'
- WGI will send submittals to Seth Lynch at Lake Co
- Copy Seth and Bill White at Lake Co on all correspondence

### Schedule

- ~~NTP for Construction will be December 16, 2018~~
- **WGI will deliver final plans November 22, 2018 in accordance with CEMEX Professional Services Agreement.**
- CEMEX will solicit and review bids from contractors

## MEETING MINUTES

March 1, 2018

Page 2

- Lake Co requested 30/60/90/100 submittals
- Lake Co will consider eliminating 90% submittal based on quality of 60% submittal
- WGI will coordinate with Lake Co on 15% line and grade review meeting
- WGI will coordinate with Lake Co on scheduling on-board review meetings with each submittal
- Lake Co will provide 2 week turnaround on review comments for each submittal
- Preference is to provide a single set of plans for Schofield Rd improvements
  - Plans will state US 27 to Cook Rd must be completed first

### Design Criteria

- WGI will submit design criteria for review
  - Design criteria will be based on Florida Greenbook and Lake Co standards for Minor Collector
- Use 45 mph design speed, posted 40 mph
  - Alignment constraints near Orange Co line may require posting of curve warning speed
  - WGI preference is to keep max superelevation near 5% in horizontal curves in consideration of truck traffic
- Typical section
  - No inverted crown profile for 4-lane section
  - Provide fill for future lanes in 4-lane section
  - Use crowned roadway for 2-lane section
- Pavement design
  - Classify as heavy-duty road per Lake Co standards
  - Provide Lake Co minimum required flexible pavement layers
  - CEMEX will coordinate with Lake Co on a separate meeting to discuss roller-compacted concrete pavement option
- Access management
  - Use Lake Co Land Development Regulations, Table B for minimum median opening spacing in the 4-lane section
  - Bradshaw Rd south of Schofield Rd is proposed to be vacated by Ridgeview PUD, currently under review by Lake Co
  - Design the east end of the 4-lane section as a 4-way stop with short stub-outs for future roadways

### Stakeholder Coordination

- Orange Co
  - 30% submittal will include interim alignment connection to existing Schofield Rd at Orange Co line and ultimate alignment matching planned realignment of Schofield Rd by Orange Co

## MEETING MINUTES

March 1, 2018

Page 3

- Lake Co will meet with property owners for potential acquisition of land required for Schofield Rd realignment
- Water Conserv II
  - Own and operate 16" and 30" reclaimed water main along Schofield Rd
  - WGI will design alignment to maintain cover above water main and avoid conflicts with surface features
- SJRWMD
  - WGI will initiate contact with CEMEX's consultant on sand skink habitat
- FDOT District 5
  - WGI will prepare access/driveway permit for modifications at US 27
- Sumter Electric Co-op
  - WGI will coordinate with SECO on potential overhead electric relocations

### Drainage and Permitting

- Lake Co preference is for a closed storm sewer system outfalling to a pond for the 4-lane section
- Lake Co preference is for ponds over linear treatment systems with ditch blocks
- Size ponds in the 4-lane section for the ultimate 4 lanes
- Size ponds in the 2-lane section only for 2 lanes

### Maintenance of Traffic

- Work zone will be divided into 2 main segments
  - Segment 1: US 27 to Cook Rd
  - Segment 2: Cook Rd to Orange Co line
- ~~● Contractor will be required to complete segment 1 and open to traffic before beginning work on segment 2~~
- Flaggers and 2-lane/1-way operation will maintain access for adjacent property owners
- Detour routes using 5 Mile Rd will be developed

### Open Discussion

- Lighting
  - No lighting required
- Geotech
  - Lake Co concurs with proposed geotech scope of work
  - Auger borings will be collected every 500'
  - SPT borings will be collected every 2000' to 2500'
  - Lake Co recommended tightening up the boring spacing in low lying areas
- Utilities
  - There is a large fiber line that runs from US 27 to the cell tower on Bradshaw Rd
  - WGI will obtain Utility Work Schedules using FDOT forms for each utility agency

## MEETING MINUTES

March 1, 2018

Page 4

- Lake Co will provide records of R/W use permits for utilities
- Future development
  - There are 2 developments in review (Ridgeview PUD and Olympus Sports & Entertainment) with Lake Co for the Clonts Groves property
- CEMEX temporary construction access permit
  - CEMEX requests approval of a temporary construction access permit to begin activities at the site
  - No sand will be transported from the site prior to the opening of segment 1 from US 27 to Cook Rd
  - The Lake Co driveway connection permit for the permanent mine entrance will be submitted with the 60% plans

## WGI Meeting Sign-In Sheet

<b>Project:</b> Schofield Road	<b>Meeting Date:</b> 3/1/18
<b>Facilitator:</b> Henri Belrose	<b>Place/Room:</b> Taxes

Name	Company	Phone	E-Mail
Henri Belrose	WGI	813-574-3190	henri.belrose@wginc.com
Seth Lynch	LCPW	352 253 9052	slynch@lakecountyfl.gov
Fred Schneider	LCPW		
WILLIAM WHITE	LCPW	352-253-9053	WWHITE@LAKECOUNTYFL.GOV
Doug Burg	WGI	813 532-7215	Doug.Burg@WGIinc.com
Zak Kelle-	WGI	813-739-7107	Zachary.Keller@wginc.com
Joel Johnson	WGI	813 600 8147	joel.johnson@wginc.com
CHRIS STEINER	WGI	813 833 3722	CHRIS.STEINER@WGINC.COM
James Mott	CEMEX	863 422-1171	jamesd.mott@cemex.com
TJ Pigeon	WGI	813-559-2279	thomas.pigeon@WGIinc.com

## MEETING AGENDA

---

SUBJECT: Schofield Road from US 27 to Lake-Orange County Line  
Lake County

RE: Kick-Off Meeting

DATE: March 1, 2018

TIME: 1:00 pm

### 1. General Requirements

- a. Project Webpage
- b. Public Involvement Plan
- c. Monthly Progress Meetings
- d. Plan Format

### 2. Schedule (attachment provided)

- a. NTP for Construction December 16, 2018
- b. Consideration for 2 Plan Sets
  - i. US 27 to Cook Road
  - ii. Cook Road to Lake-Orange County Line
- c. Lake County Submittal Review Turnaround
- d. Consideration for Combining 90% & 100% Submittal
  - i. 30/60/100/Bid Review

### 3. Design Criteria

- a. Florida Greenbook and Lake County Standards
- b. 45 mph Design Speed – Minor Collector
  - i. Deviation from 55 mph Lake County Standards
  - ii. Constraints at Orange County Line
- c. Typical Section
  - i. 4-lane urban divided
  - ii. 2-lane rural expandable to future 4-lane divided

- d. Pavement Design
  - i. Heavy-Duty Road
  - ii. ESALs developed from Traffic Impact Analysis
  - iii. Roller-Compacted Concrete Option

#### 4. Stakeholder Coordination

- a. Orange County Schofield Road Realignment
- b. Water Conserv II
  - i. 30" and 16" Reclaimed Water Main
- c. SJRWMD
  - i. Small Floodplain Area
  - ii. Wetland Delineation
- d. FDOT District 5
  - i. US 27 Connection
- e. Sumter Electric Co-Op
  - i. OE Relocations

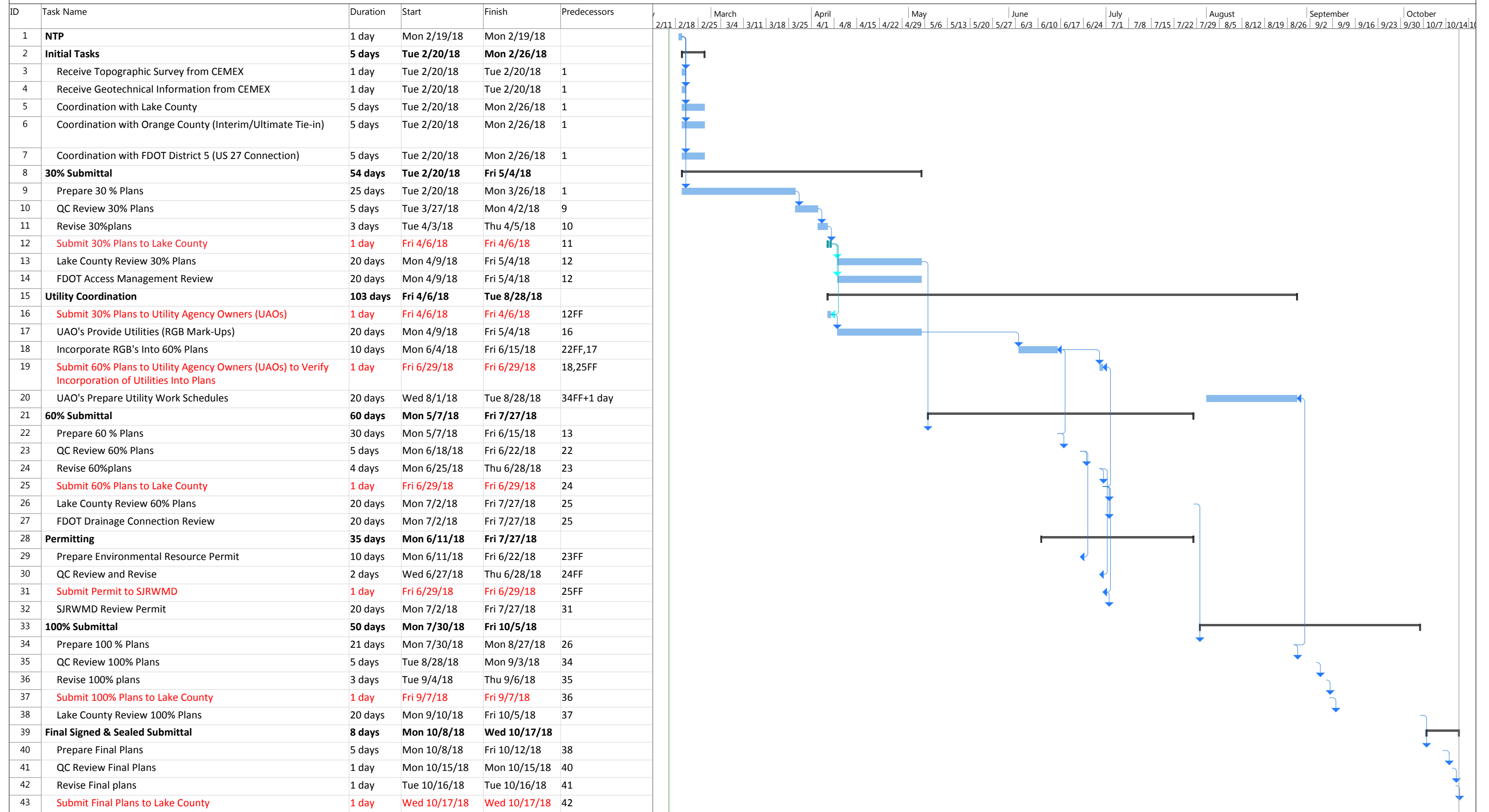
#### 5. Drainage & Permitting

- a. Dry Linear Treatment
- b. PGL 2' above 100-yr Flood Elevation
- c. RCP only; no other pipe materials permitted

#### 6. Maintenance of Traffic

#### 7. Open Discussion

### CEMEX SCHOFIELD RD. DESIGN SCHEDULE



Schofield Rd. Design  
Fri 2/16/18

<b>Task</b>	Summary	Inactive Milestone	Duration-only	Start-only	External Milestone	Manual Progress
Split	Project Summary	Inactive Summary	Manual Summary Rollup	Finish-only	Deadline	
Milestone	Inactive Task	Manual Task	Manual Summary	External Tasks	Progress	