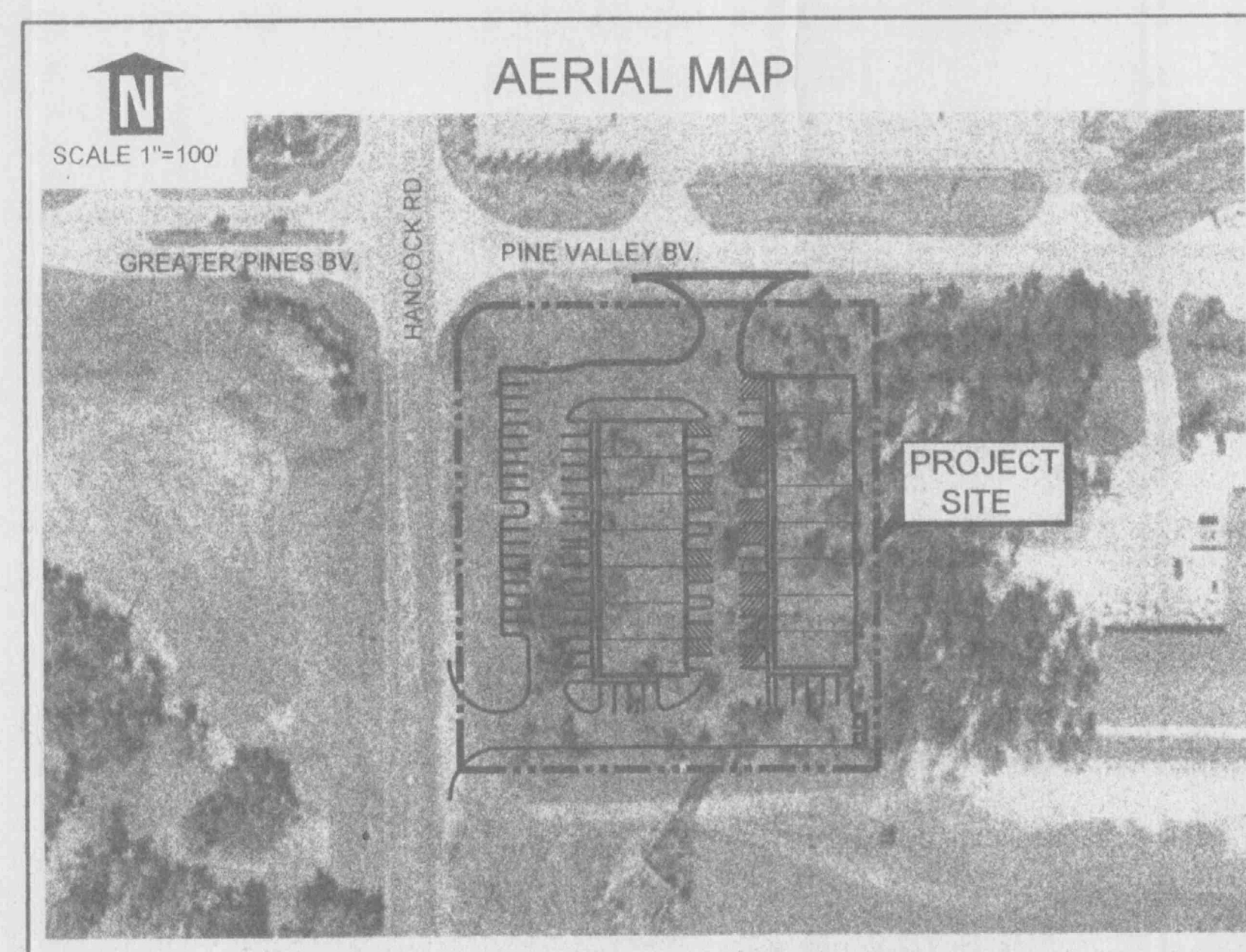
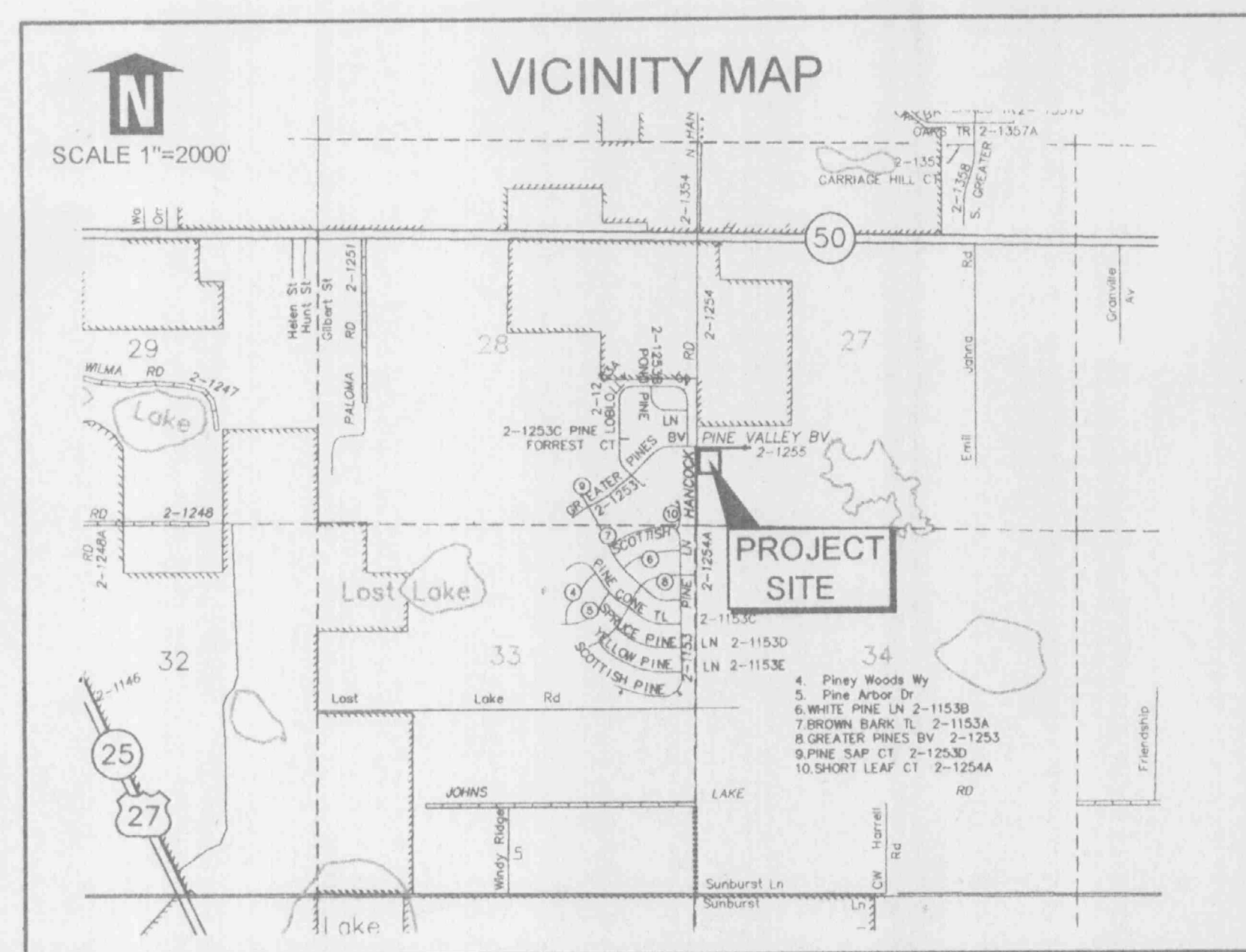


SCOTT BUSINESS & INDUSTRIAL CENTER

INDEX

1. COVER SHEET
2. PAVING, GRADING, AND DRAINAGE PLAN
3. LANDSCAPE PLAN
4. DETAILS



LEGAL DESCRIPTION

Lots 8 & 9, PINE VALLEY INDUSTRIAL PARK, according to the Plat thereof, as recorded in Plat Book 29, Page(s) 70, Public Records of Lake County, Florida.

- County Benchmark Elevation: 170.27'
 East Rim of Manhole located at the intersection of Cedar Ridge Circle & Bond Street.
- ♣ #1 Site Benchmark Elevation: 156.91'
 Set 40 penny Nail in East Side of Power Pole located 178 ± South Centerline of Pine Valley Boulevard 25 ± East of Centerline of Hancock Road
- ♣ #2 Site Benchmark Elevation: 152.82'
 Top of P.K. Nail in Centerline of Pine Valley Boulevard, 313 ± East of the Point of Intersection of Pine Valley Boulevard & Hancock Road.



GRIFFEY ENGINEERING
 2001 OLD HWY 441, SUITE 2
 MOUNT DORA, FLORIDA 32757
 PHONE (352) 383-4786
 FAX (352) 383-0828

OWNER:
LANDCASTER 955 LIMITED PARTNERSHIP
 P.O. BOX 593298
 ORLANDO, FLORIDA 32859-3298
 PHONE (407) 856-5656
 FAX (407) 856-5696

SCOTT BUSINESS & INDUSTRIAL CENTER

RECEIVED COVER SHEET
 JUL 28 2003
 PDS
 ALTAMONTE SVG. CTR.

Rev. #	Date	Drawn By:
		K.G.N.
		Checked By:
		D.A.G.
		Drawing #:
		03006_2
		Project #:
		03006SPN
Date:	07-18-03	Scale:
		AS NOTED