

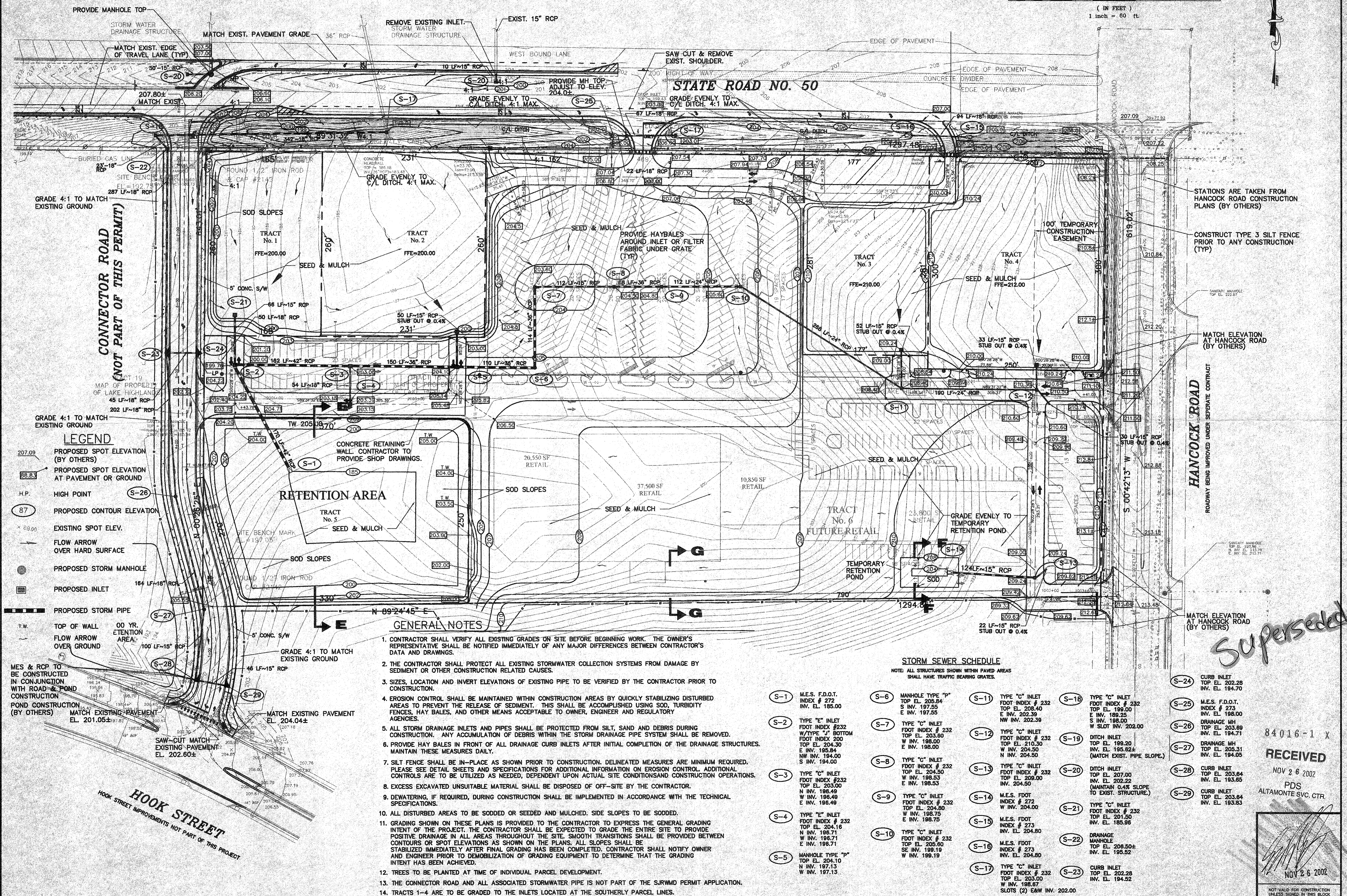
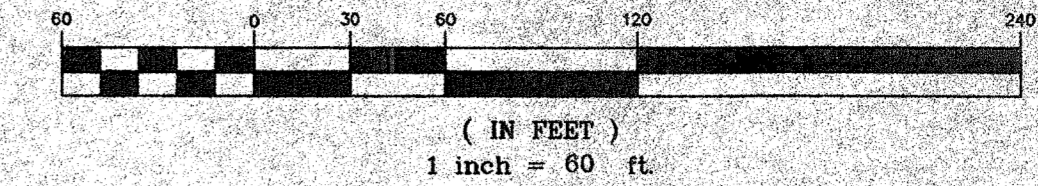
NO.	DATE	REVISION
6		
5		
4		
3		
2		
1		

PREPARED FOR:
PRESCO ASSOCIATES, LLC

COLLEGE STATION
 CENTER
 LAKE COUNTY,
 FLORIDA

**PAVING, GRADING
 AND DRAINAGE
 PLAN**

GRAPHIC SCALE



CONNECTOR ROAD
 (NOT PART OF THIS PERMIT)

LEGEND

- 207.09 PROPOSED SPOT ELEVATION (BY OTHERS)
- 88.83 PROPOSED SPOT ELEVATION AT PAVEMENT OR GROUND
- H.P. HIGH POINT
- 87 PROPOSED CONTOUR ELEVATION
- 89.00 EXISTING SPOT ELEV.
- FLOW ARROW OVER HARD SURFACE
- PROPOSED STORM MANHOLE
- PROPOSED INLET
- PROPOSED STORM PIPE
- T.W. TOP OF WALL
- 00 YR. ETENTION AREA
- FLOW ARROW OVER GROUND
- MES & RCP TO BE CONSTRUCTED IN CONJUNCTION WITH ROAD & POND CONSTRUCTION
- CONSTRUCTION (BY OTHERS)
- MATCH EXISTING PAVEMENT EL. 201.05±
- MATCH EXISTING PAVEMENT EL. 204.04±
- SAW-CUT MATCH EXISTING PAVEMENT EL. 202.60±

GENERAL NOTES

1. CONTRACTOR SHALL VERIFY ALL EXISTING GRADES ON SITE BEFORE BEGINNING WORK. THE OWNER'S REPRESENTATIVE SHALL BE NOTIFIED IMMEDIATELY OF ANY MAJOR DIFFERENCES BETWEEN CONTRACTOR'S DATA AND DRAWINGS.
2. THE CONTRACTOR SHALL PROTECT ALL EXISTING STORMWATER COLLECTION SYSTEMS FROM DAMAGE BY SEDIMENT OR OTHER CONSTRUCTION RELATED CAUSES.
3. SIZES, LOCATION AND INVERT ELEVATIONS OF EXISTING PIPE TO BE VERIFIED BY THE CONTRACTOR PRIOR TO CONSTRUCTION.
4. EROSION CONTROL SHALL BE MAINTAINED WITHIN CONSTRUCTION AREAS BY QUICKLY STABILIZING DISTURBED AREAS TO PREVENT THE RELEASE OF SEDIMENT. THIS SHALL BE ACCOMPLISHED USING SOD, TURBIDITY FENCES, HAY BALES, AND OTHER MEANS ACCEPTABLE TO OWNER, ENGINEER AND REGULATORY AGENCIES.
5. ALL STORM DRAINAGE INLETS AND PIPES SHALL BE PROTECTED FROM SILT, SAND AND DEBRIS DURING CONSTRUCTION. ANY ACCUMULATION OF DEBRIS WITHIN THE STORM DRAINAGE PIPE SYSTEM SHALL BE REMOVED.
6. PROVIDE HAY BALES IN FRONT OF ALL DRAINAGE CURB INLETS AFTER INITIAL COMPLETION OF THE DRAINAGE STRUCTURES. MAINTAIN THESE MEASURES DAILY.
7. SILT FENCE SHALL BE IN-PLACE AS SHOWN PRIOR TO CONSTRUCTION. DELINEATED MEASURES ARE MINIMUM REQUIRED. PLEASE SEE DETAIL SHEETS AND SPECIFICATIONS FOR ADDITIONAL INFORMATION ON EROSION CONTROL. ADDITIONAL CONTROLS ARE TO BE UTILIZED AS NEEDED, DEPENDENT UPON ACTUAL SITE CONDITIONS AND CONSTRUCTION OPERATIONS.
8. EXCESS EXCAVATED UNSUITABLE MATERIAL SHALL BE DISPOSED OF OFF-SITE BY THE CONTRACTOR.
9. DEWATERING, IF REQUIRED, DURING CONSTRUCTION SHALL BE IMPLEMENTED IN ACCORDANCE WITH THE TECHNICAL SPECIFICATIONS.
10. ALL DISTURBED AREAS TO BE SODDED OR SEEDDED AND MULCHED. SIDE SLOPES TO BE SODDED.
11. GRADING SHOWN ON THESE PLANS IS PROVIDED TO THE CONTRACTOR TO EXPRESS THE GENERAL GRADING INTENT OF THE PROJECT. THE CONTRACTOR SHALL BE EXPECTED TO GRADE THE ENTIRE SITE TO PROVIDE POSITIVE DRAINAGE IN ALL AREAS THROUGHOUT THE SITE. SMOOTH TRANSITIONS SHALL BE PROVIDED BETWEEN CONTOURS OR SPOT ELEVATIONS AS SHOWN ON THE PLANS. ALL SLOPES SHALL BE STABILIZED IMMEDIATELY AFTER FINAL GRADING HAS BEEN COMPLETED. CONTRACTOR SHALL NOTIFY OWNER AND ENGINEER PRIOR TO DEMOBILIZATION OF GRADING EQUIPMENT TO DETERMINE THAT THE GRADING INTENT HAS BEEN ACHIEVED.
12. TREES TO BE PLANTED AT TIME OF INDIVIDUAL PARCEL DEVELOPMENT.
13. THE CONNECTOR ROAD AND ALL ASSOCIATED STORMWATER PIPE IS NOT PART OF THE SJRWMD PERMIT APPLICATION.
14. TRACTS 1-4 ARE TO BE GRADED TO THE INLETS LOCATED AT THE SOUTHERLY PARCEL LINES.

STORM SEWER SCHEDULE

NOTE: ALL STRUCTURES SHOWN WITHIN PAVED AREAS SHALL HAVE TRAFFIC BEARING GRATES.

S-1	M.E.S. F.D.O.T. INDEX # 272 INV. EL. 197.50	S-6	MANHOLE TYPE "P" TOP EL. 205.84 S INV. 197.55 E INV. 197.55	S-11	TYPE "C" INLET FDOT INDEX # 232 TOP EL. 202.39 E INV. 202.39 NW INV. 202.39	S-16	TYPE "C" INLET FDOT INDEX # 232 TOP EL. 199.00 E INV. 199.00 S INV. 198.00 NW INV. 202.00	S-24	CURB INLET TOP EL. 202.26 INV. EL. 194.70
S-2	TYPE "E" INLET FDOT INDEX # 232 W/TYPE "L" BOTTOM FDOT INDEX 200 TOP EL. 204.30 E INV. 195.84 NW INV. 194.00 S INV. 194.00	S-7	TYPE "C" INLET FDOT INDEX # 232 TOP EL. 203.80 W INV. 198.00 E INV. 198.00	S-12	TYPE "C" INLET FDOT INDEX # 232 TOP EL. 210.30 W INV. 204.50 E INV. 204.50	S-19	DITCH INLET TOP EL. 199.20 INV. EL. 196.62± (MATCH EXIST. PIPE SLOPE)	S-25	M.E.S. F.D.O.T. INDEX # 273 INV. EL. 198.00
S-3	TYPE "E" INLET FDOT INDEX # 232 TOP EL. 203.00 N INV. 198.49 W INV. 198.49 E INV. 198.49	S-8	TYPE "C" INLET FDOT INDEX # 232 TOP EL. 204.80 W INV. 198.53 E INV. 198.53	S-13	TYPE "C" INLET FDOT INDEX # 232 TOP EL. 209.00 INV. EL. 204.50	S-20	DITCH INLET TOP EL. 207.00 INV. EL. 202.22 (MAINTAIN 0.4% SLOPE TO EXIST. STRUCTURE)	S-26	DRAINAGE MH TOP EL. 203.69 INV. EL. 194.71
S-4	TYPE "E" INLET FDOT INDEX # 232 TOP EL. 204.16 N INV. 196.71 W INV. 196.71 E INV. 196.71	S-9	TYPE "C" INLET FDOT INDEX # 232 TOP EL. 204.80 W INV. 198.75 E INV. 198.75	S-14	M.E.S. FDOT INDEX # 272 W INV. 204.00	S-21	TYPE "C" INLET FDOT INDEX # 232 TOP EL. 201.50 INV. EL. 185.96	S-28	CURB INLET TOP EL. 203.64 INV. EL. 193.95
S-5	MANHOLE TYPE "P" TOP EL. 204.10 N INV. 197.13 W INV. 197.13	S-10	TYPE "C" INLET FDOT INDEX # 232 TOP EL. 204.80 W INV. 199.19 E INV. 199.19	S-15	M.E.S. FDOT INDEX # 273 INV. EL. 204.80	S-22	DRAINAGE MANHOLE TOP EL. 208.50± INV. EL. 195.52	S-29	CURB INLET TOP EL. 203.64 INV. EL. 193.83
				S-17	TYPE "C" INLET FDOT INDEX # 232 TOP EL. 203.00 W INV. 198.87 SLOTS (2) E&W INV. 202.00	S-23	CURB INLET TOP EL. 203.64 INV. EL. 194.52		

Superseded

84016-1 x

RECEIVED

NOV 26 2002

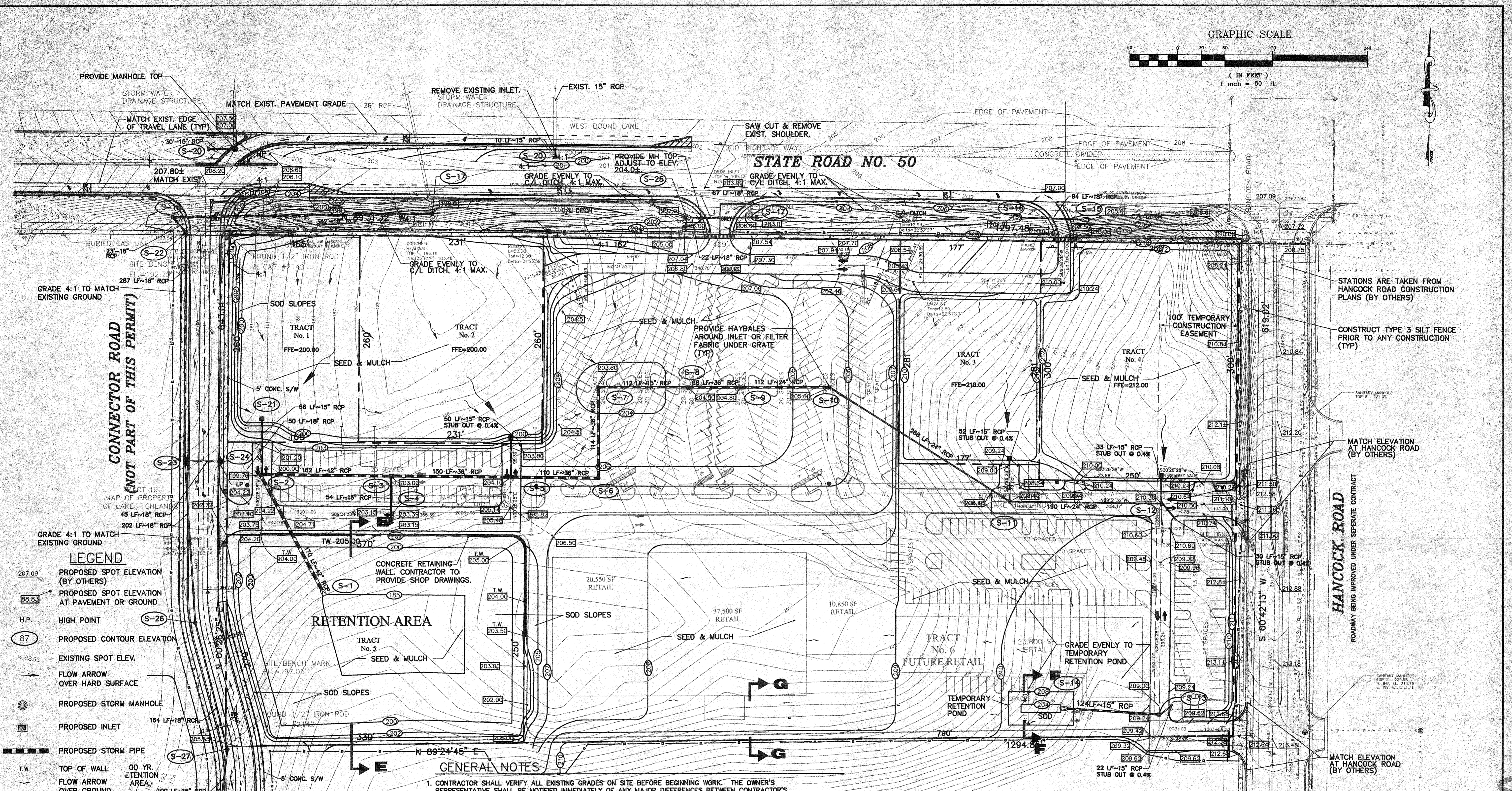
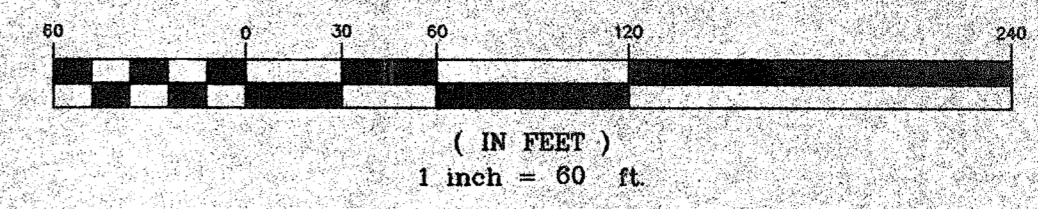
PDS
 ALTAMONTE SVC. CTR.

NOV 26 2002

NOT VALID FOR CONSTRUCTION
 UNLESS SIGNED IN THIS BLOCK

DRAWN: CAG
 DESIGN: CAS
 CHECKED: SMC
 JOB NO.: 355.000
 DATE: 10/25/02
 SHEET
 0-3

GRAPHIC SCALE



- LEGEND**
- 207.09 PROPOSED SPOT ELEVATION (BY OTHERS)
 - 88.83 PROPOSED SPOT ELEVATION AT PAVEMENT OR GROUND
 - H.P. HIGH POINT
 - 87 PROPOSED CONTOUR ELEVATION
 - EXISTING SPOT ELEV.
 - FLOW ARROW OVER HARD SURFACE
 - PROPOSED STORM MANHOLE
 - PROPOSED INLET
 - PROPOSED STORM PIPE
 - T.W. TOP OF WALL
 - 00 YR. ETENTION AREA
 - FLOW ARROW OVER GROUND
 - MES & RCP TO BE CONSTRUCTED IN CONJUNCTION WITH ROAD & POND CONSTRUCTION
 - POND CONSTRUCTION (BY OTHERS)
 - MATCH EXISTING PAVEMENT EL. 201.05±
 - MATCH EXISTING PAVEMENT EL. 204.04±
 - SAW-CUT MATCH EXISTING PAVEMENT EL. 202.60±

GENERAL NOTES

1. CONTRACTOR SHALL VERIFY ALL EXISTING GRADES ON SITE BEFORE BEGINNING WORK. THE OWNER'S REPRESENTATIVE SHALL BE NOTIFIED IMMEDIATELY OF ANY MAJOR DIFFERENCES BETWEEN CONTRACTOR'S DATA AND DRAWINGS.
2. THE CONTRACTOR SHALL PROTECT ALL EXISTING STORMWATER COLLECTION SYSTEMS FROM DAMAGE BY SEDIMENT OR OTHER CONSTRUCTION RELATED CAUSES.
3. SIZES, LOCATION AND INVERT ELEVATIONS OF EXISTING PIPE TO BE VERIFIED BY THE CONTRACTOR PRIOR TO CONSTRUCTION.
4. EROSION CONTROL SHALL BE MAINTAINED WITHIN CONSTRUCTION AREAS BY QUICKLY STABILIZING DISTURBED AREAS TO PREVENT THE RELEASE OF SEDIMENT. THIS SHALL BE ACCOMPLISHED USING SOD, TURBIDITY FENCES, HAY BALES, AND OTHER MEANS ACCEPTABLE TO OWNER, ENGINEER AND REGULATORY AGENCIES.
5. ALL STORM DRAINAGE INLETS AND PIPES SHALL BE PROTECTED FROM SILT, SAND AND DEBRIS DURING CONSTRUCTION. ANY ACCUMULATION OF DEBRIS WITHIN THE STORM DRAINAGE PIPE SYSTEM SHALL BE REMOVED.
6. PROVIDE HAY BALES IN FRONT OF ALL DRAINAGE CURB INLETS AFTER INITIAL COMPLETION OF THE DRAINAGE STRUCTURES. MAINTAIN THESE MEASURES DAILY.
7. SILT FENCE SHALL BE IN-PLACE AS SHOWN PRIOR TO CONSTRUCTION. DELINEATED MEASURES ARE MINIMUM REQUIRED. PLEASE SEE DETAIL SHEETS AND SPECIFICATIONS FOR ADDITIONAL INFORMATION ON EROSION CONTROL. ADDITIONAL CONTROLS ARE TO BE UTILIZED AS NEEDED, DEPENDENT UPON ACTUAL SITE CONDITIONS AND CONSTRUCTION OPERATIONS.
8. EXCESS EXCAVATED UNSUITABLE MATERIAL SHALL BE DISPOSED OF OFF-SITE BY THE CONTRACTOR.
9. DEWATERING, IF REQUIRED, DURING CONSTRUCTION SHALL BE IMPLEMENTED IN ACCORDANCE WITH THE TECHNICAL SPECIFICATIONS.
10. ALL DISTURBED AREAS TO BE SODDED OR SEEDED AND MULCHED. SIDE SLOPES TO BE SODDED.
11. GRADING SHOWN ON THESE PLANS IS PROVIDED TO THE CONTRACTOR TO EXPRESS THE GENERAL GRADING INTENT OF THE PROJECT. THE CONTRACTOR SHALL BE EXPECTED TO GRADE THE ENTIRE SITE TO PROVIDE POSITIVE DRAINAGE IN ALL AREAS THROUGHOUT THE SITE. SMOOTH TRANSITIONS SHALL BE PROVIDED BETWEEN CONTOURS OR SPOT ELEVATIONS AS SHOWN ON THE PLANS. ALL SLOPES SHALL BE STABILIZED IMMEDIATELY AFTER FINAL GRADING HAS BEEN COMPLETED. CONTRACTOR SHALL NOTIFY OWNER AND ENGINEER PRIOR TO DEMOBILIZATION OF GRADING EQUIPMENT TO DETERMINE THAT THE GRADING INTENT HAS BEEN ACHIEVED.
12. TREES TO BE PLANTED AT TIME OF INDIVIDUAL PARCEL DEVELOPMENT.
13. THE CONNECTOR ROAD AND ALL ASSOCIATED STORMWATER PIPE IS NOT PART OF THE SR/RMD PERMIT APPLICATION.
14. TRACTS 1-4 ARE TO BE GRADED TO THE INLETS LOCATED AT THE SOUTHERLY PARCEL LINES.

STORM SEWER SCHEDULE

NOTE: ALL STRUCTURES SHOWN WITHIN PAVED AREAS SHALL HAVE TRAFFIC BEARING GRATES.

S-1	M.E.S. F.D.O.T. INDEX # 272 TOP EL. 205.64 INV. EL. 195.00	S-6	MANHOLE TYPE "P" TOP EL. 197.55 INV. EL. 197.55	S-11	TYPE "C" INLET FDOT INDEX # 232 TOP EL. 203.60 E INV. 202.39 NW INV. 202.39	S-18	TYPE "C" INLET FDOT INDEX # 232 TOP EL. 199.00 E INV. 198.25 S INV. 198.00 W SLOT INV. 202.00	S-24	CURB INLET TOP EL. 202.28 INV. EL. 194.70
S-2	TYPE "E" INLET FDOT INDEX # 232 W TYPE "I" BOTTOM FDOT INDEX 200 TOP EL. 204.30 E INV. 195.84 NW INV. 194.00 S INV. 194.00	S-7	TYPE "C" INLET FDOT INDEX # 232 TOP EL. 203.60 W INV. 198.00 E INV. 198.00	S-12	TYPE "C" INLET FDOT INDEX # 232 TOP EL. 210.30 W INV. 204.50 N INV. 204.50	S-19	DITCH INLET TOP EL. 199.20 E INV. 195.62 (MATCH EXIST. PIPE SLOPE)	S-25	M.E.S. F.D.O.T. INDEX # 273 INV. EL. 198.00
S-3	TYPE "C" INLET FDOT INDEX # 232 TOP EL. 203.00 N INV. 196.49 W INV. 195.49 E INV. 196.49	S-8	TYPE "C" INLET FDOT INDEX # 232 TOP EL. 204.50 W INV. 198.53 E INV. 198.53	S-13	TYPE "C" INLET FDOT INDEX # 232 TOP EL. 209.00 INV. 204.50	S-20	DITCH INLET TOP EL. 207.00 INV. EL. 202.22 (MAINTAIN 0.4% SLOPE TO EXIST. STRUCTURE)	S-26	DRAINAGE MH TOP EL. 203.89 INV. EL. 194.71
S-4	TYPE "E" INLET FDOT INDEX # 232 TOP EL. 204.16 N INV. 196.71 W INV. 196.71 E INV. 196.71	S-9	TYPE "C" INLET FDOT INDEX # 232 TOP EL. 204.80 W INV. 198.75 E INV. 198.75	S-14	M.E.S. FDOT INDEX # 272 W INV. 204.00	S-21	TYPE "C" INLET FDOT INDEX # 232 TOP EL. 201.50 INV. EL. 185.96	S-28	DRAINAGE MANHOLE TOP EL. 208.50± INV. EL. 195.52
S-5	MANHOLE TYPE "P" TOP EL. 204.10 N INV. 197.13 W INV. 197.13	S-10	TYPE "C" INLET FDOT INDEX # 232 TOP EL. 203.00 W INV. 199.19	S-15	M.E.S. FDOT INDEX # 273 INV. EL. 204.80	S-22	CURB INLET TOP EL. 202.28 INV. EL. 194.52	S-29	CURB INLET TOP EL. 203.84 INV. EL. 193.83

RECEIVED

NOV 26 2002
PDS
ALTIMONTE SVC. CTR.

NOT VALID FOR CONSTRUCTION
UNLESS SIGNED IN THIS BLOCK

KCG
KELLY, COLLINS & GENTRY, INC.
1700 NORTH ORANGE AVENUE, SUITE 400
ORLANDO, FLORIDA 32801
(407) 388-7887 FAX (407) 888-1488

NO.	DATE	REVISION
1		
2		
3		
4		
5		

PREPARED FOR:
PRESCO ASSOCIATES, LLC

COLLEGE STATION
CENTER
LAKE COUNTY,
FLORIDA

**PAVING, GRADING
AND DRAINAGE
PLAN**

DRAWN: CAG
DESIGN: CAG
CHECKED: SMG
JOB NO.: 355.000
DATE: 10/25/02
SHEET
C-3