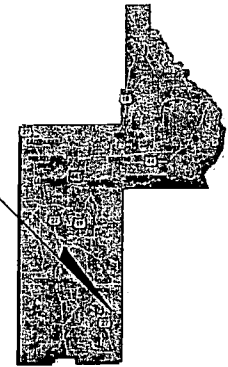




LAKE COUNTY
FLORIDA

CONTRACT PLANS

PROJECT LOCATION



INDEX OF ROADWAY PLANS

SHEET NO. SHEET DESCRIPTION

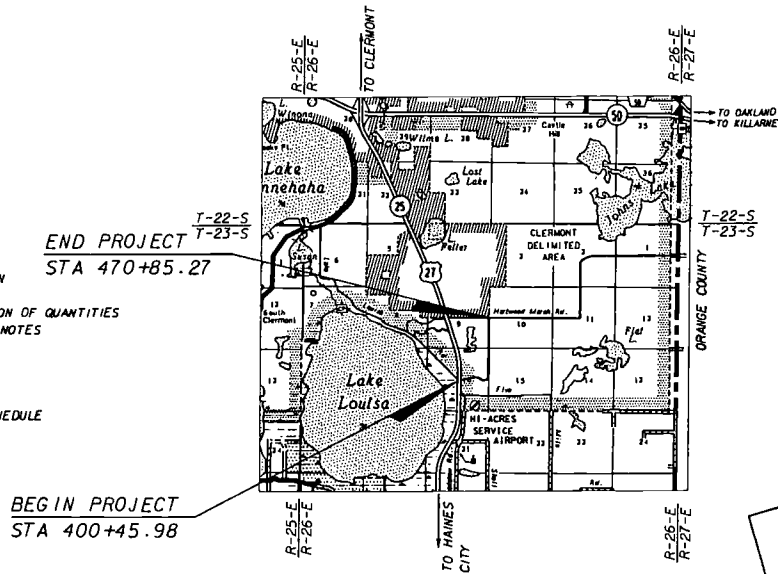
- KEY SHEET
- DRAINAGE MAP
- FLOOD DATA TABLE
- TYPICAL SECTIONS
- SUMMARY OF DRAINAGE STRUCTURES
- GENERAL NOTES
- PROJECT LAYOUT
- PLAN AND PROFILE SHEETS
- PLAN SHEETS
- LATERAL OUTFALL SHEET
- INTERSECTION DETAILS
- DRAINAGE STRUCTURE SHEETS
- POND DETAILS
- SWALE DETAIL SHEET
- POND CROSS SECTIONS
- DRAINAGE DETAIL SHEET
- CROSS SECTIONS
- STORM WATER POLLUTION PREVENTION PLAN
- TRAFFIC CONTROL PLAN
- SIGNING AND PAVEMENT MARKING TABULATION OF QUANTITIES
- SIGNING AND PAVEMENT MARKING GENERAL NOTES
- SIGNING AND PAVEMENT MARKING PLANS
- SIGNALIZATION TABULATION OF QUANTITIES
- SIGNALIZATION GENERAL NOTES
- SIGNALIZATION PLANS
- SIGNALIZATION CONCRETE STRAIN POLE SCHEDULE
- SIGNALIZATION GUIDESIGN WORKSHEET

GOVERNING STANDARDS AND SPECIFICATIONS:
FLORIDA DEPARTMENT OF TRANSPORTATION,
DESIGN STANDARDS DATED JANUARY 2008,
AND STANDARD SPECIFICATIONS FOR ROAD AND
BRIDGE CONSTRUCTION DATED 2007,
AS AMENDED BY CONTRACT DOCUMENTS.

APPLICABLE DESIGN STANDARDS MODIFICATIONS: 1-1-08,

For Design Standards Modifications click on
"Design Standards" at the following web site:
<http://www.dot.state.fl.us/rddesign/>

SOUTH HANCOCK ROAD
FROM US 27 / SR 25 TO HARTWOOD MARSH ROAD



COUNTY MANAGER:
CINDY HALL

COUNTY COMMISSIONERS:
LINDA STEWERT
DEBBIE STIVENDER
JENNIFER HILL
ELAINE RENCK
WELTON CADWELL

ROADWAY SHOP DRAWINGS
TO BE SUBMITTED TO:

KAREN M. VAN DEN AVONT, PE
HNTB CORPORATION
300 PRIMAVERA BOULEVARD, SUITE 200
LAKE MARY, FLORIDA 32746

PLANS PREPARED BY:

HNTB

HNTB CORPORATION
300 PRIMAVERA BOULEVARD, SUITE 200
LAKE MARY, FL 32746
PHONE: (407) 805-0355
FAX: 407-805-0227
CERT. OF AUTH. NO. 6500
VENDOR NO.: V98567003

NOTE: THE SCALE OF THESE PLANS MAY
HAVE CHANGED DUE TO REPRODUCTION.

**60%
RESUBMITTAL
02/19/2008**

PROJECT LENGTH IS BASED ON £ OF CONSTRUCTION

LENGTH OF PROJECT		
	LINEAR FEET	MILES
ROADWAY	7039.29	1.333
BRIDGES	0.00	0.000
NET LENGTH OF PROJECT	7039.29	1.333
EXCEPTIONS	0.00	0.000
GROSS LENGTH OF PROJECT	7039.29	1.333

LAKE COUNTY PROJECT MANAGER: THOMAS MCCANN, P.E.

KEY SHEET REVISIONS		
DATE	BY	DESCRIPTION

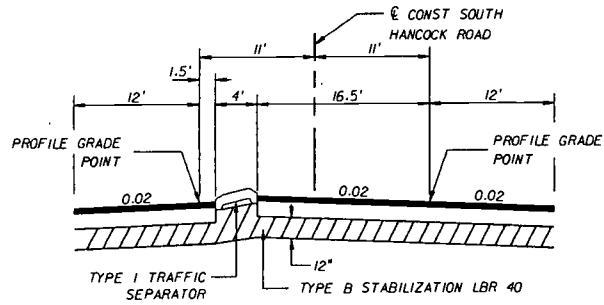
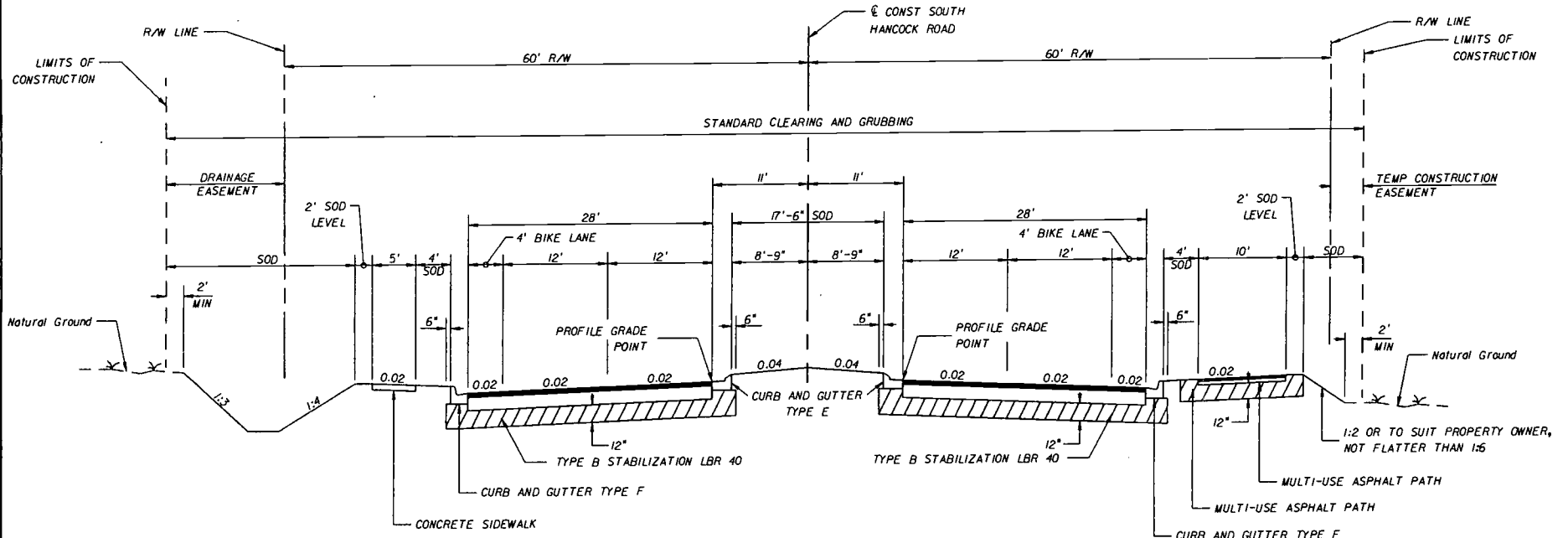
ROADWAY PLANS
ENGINEER OF RECORD: KAREN M. VAN DEN AVONT, PE

P.E. NO.: 44794

RECEIVED IN
ALTAMONTE SPRINGS

FISCAL YEAR	SHEET NO.
07	1

FEB 27 2008
115324-1
REGULATORY
INFORMATION MGT.

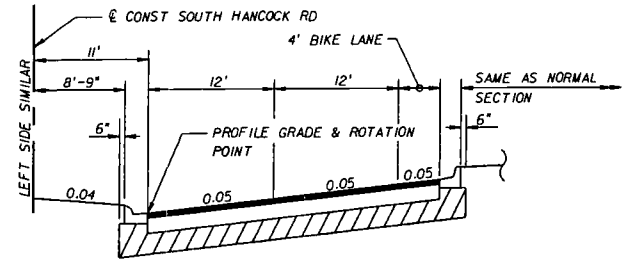


**SOUTH HANCOCK ROAD
LEFT TURN LANE DETAIL**

TRAFFIC DATA
 DESIGN SPEED = 45 MPH
 POSTED SPEED = 40 MPH

**TYPICAL SECTION
 SOUTH HANCOCK ROAD
 STA 400+45.98 TO STA 470+85.27**

NEW CONSTRUCTION
 OPTIONAL BASE GROUP 9 WITH
 TYPE SP STRUCTURAL COURSE (TRAFFIC C) (3")
 AND FRICTION COURSE FC-12.5 (1 1/2") (RUBBER)



**SOUTH HANCOCK ROAD
 SUPERELEVATED SECTION
 (RIGHT SIDE SHOWN)**

MULTI-USE ASPHALT PATH
 OPTIONAL BASE GROUP 1 WITH
 TYPE SP STRUCTURAL COURSE (TRAFFIC A) (1")

REVISIONS		DESCRIPTION
DATE	BY	

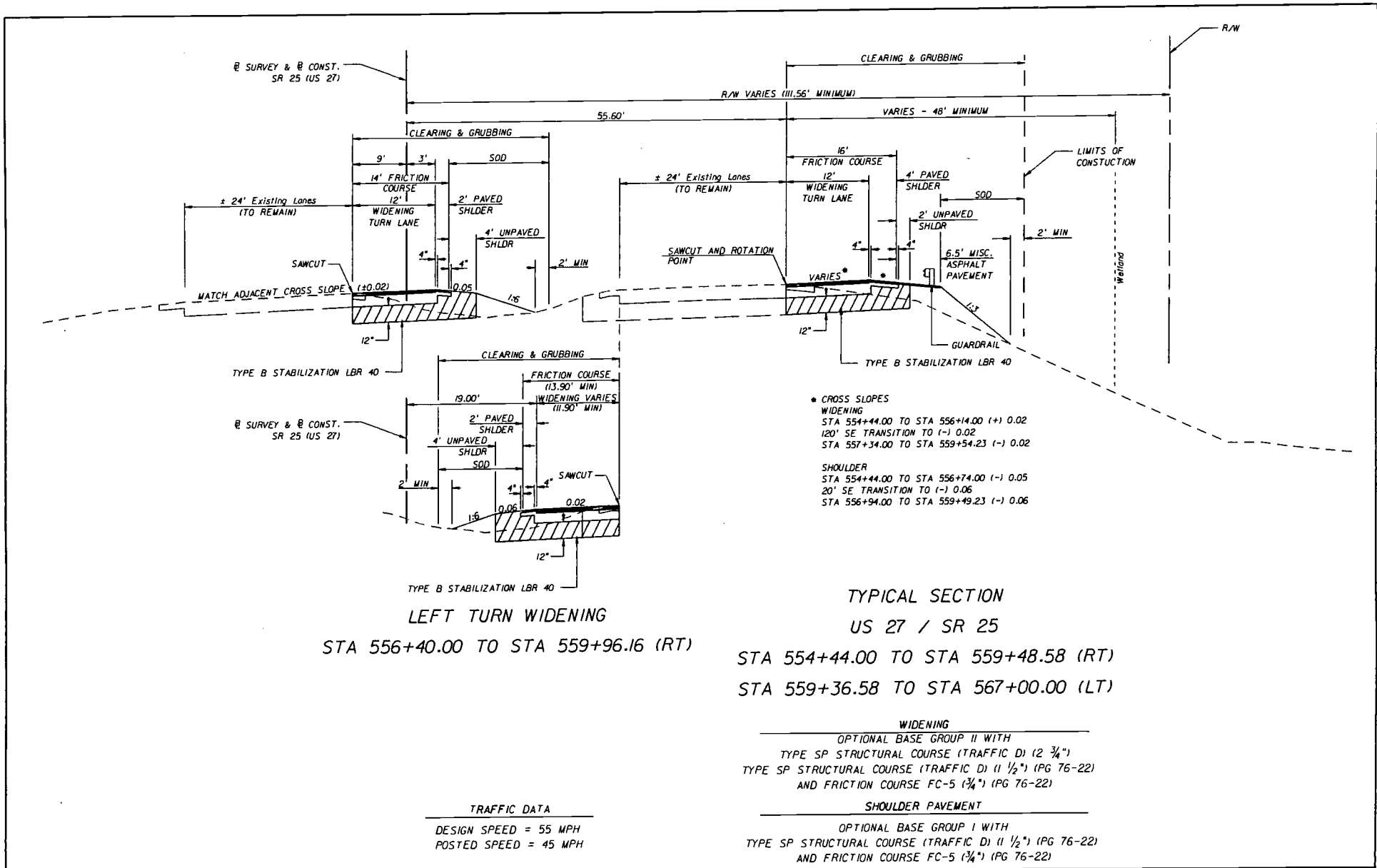
HNTB
 HNTB CORPORATION
 300 PRIMA BLVD,
 SUITE 200
 LAKE WARE, FL 32746
 (407) 805-0355
 CERT. OF AUTH. NO. 6500
 ENGINEER OF RECORD: KAREN M. VAN DEN AVONT, P.E.
 FL. REGISTRATION NO. 44794



**SOUTH HANCOCK
 ROAD**

TYPICAL SECTIONS

SHEET NO.



REVISIONS	
DATE	DESCRIPTION

HNTB
 HNTB CORPORATION
 300 PRIMA BLVD.
 SUITE 200
 LAKE HAVY, FL 32746
 (407) 805-0355
 CERT. OF AUTH. NO. 6500

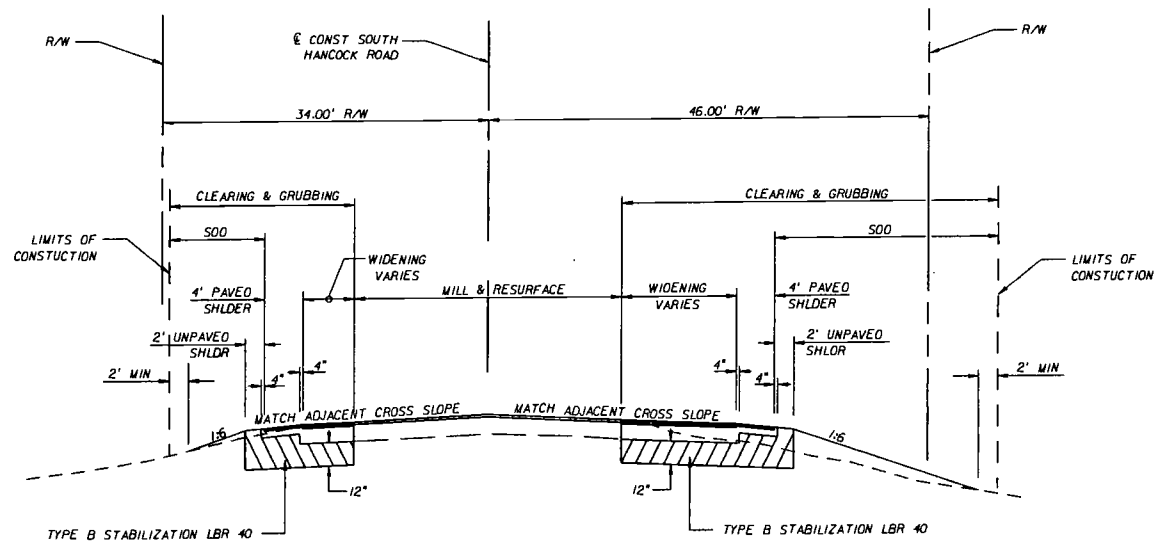
ENGINEER OF RECORD: KAREN M. VAN DEN AVONT, P.E.
 FL. REGISTRATION NO. 44794

LAKE COUNTY
 FLORIDA

SOUTH HANCOCK ROAD

TYPICAL SECTIONS

SHEET NO.



TYPICAL SECTION
LAKE LOUISA ROAD
STA 393+73.00 TO STA 399+33.07

WIDENING

OPTIONAL BASE GROUP 9 WITH
TYPE SP STRUCTURAL COURSE (TRAFFIC C) (3")
AND FRICTION COURSE FC-12.5 (1 1/2")

SHOULDER PAVEMENT

OPTIONAL BASE GROUP 1 WITH
TYPE SP STRUCTURAL COURSE (TRAFFIC C) (1 1/2")
AND FRICTION COURSE FC-12.5 (1 1/2")

MILLING

MILL EXISTING ASPHALT PAVEMENT (2" AVG. DEPTH)

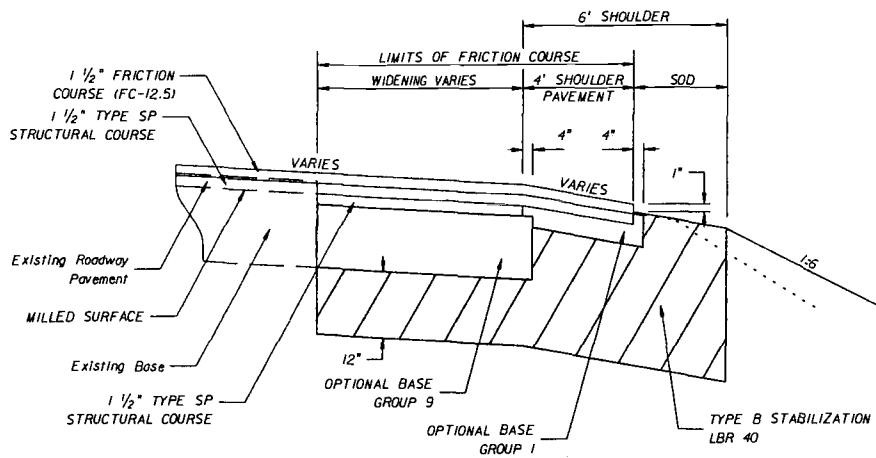
RESURFACING

TYPE SP STRUCTURAL COURSE (TRAFFIC C) (1 1/2")
AND FRICTION COURSE FC-12.5 (1 1/2") (RUBBER)

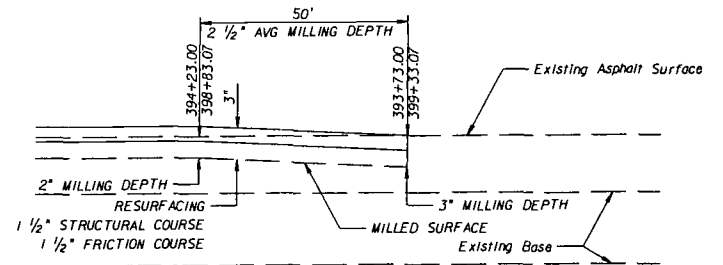
TRAFFIC DATA

DESIGN SPEED = 40 MPH
POSTED SPEED = 35 MPH

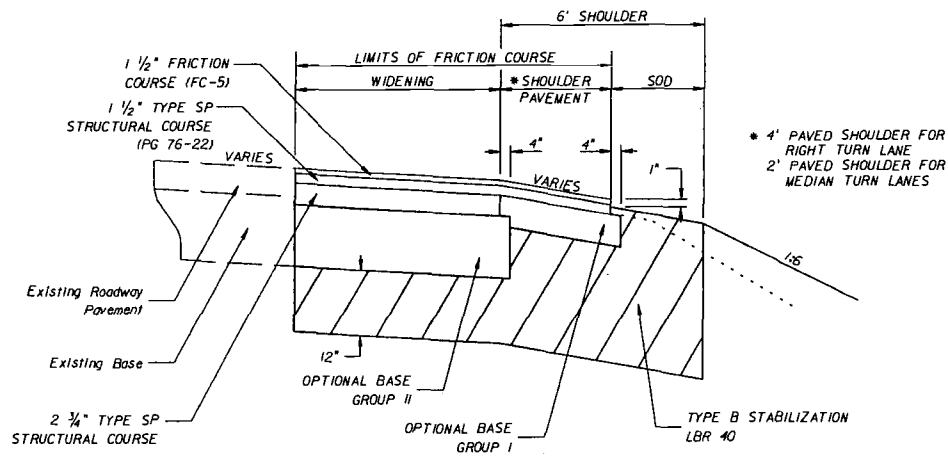
REVISIONS		HNTB <small>HNTB CORPORATION 300 PRIMA BLVD. SUITE 200 LAKE HAVY, FL 32746 (407) 805-0355 CERT. OF AUTH. NO. 6500</small>	 LAKE COUNTY <small>FLORIDA</small>	SOUTH HANCOCK ROAD	TYPICAL SECTIONS	SHEET NO.
DATE	BY					
		ENGINEER OF RECORD: KAREN M. VAN DEN AVONT, P.E. FL. REGISTRATION NO. 44794				



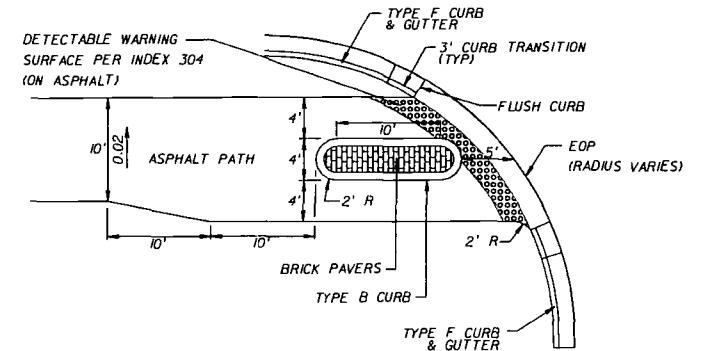
LAKE LOUISA ROAD WIDENING AND SHOULDER PAVEMENT DETAIL



LAKE LOUISA ROAD MILLING AND RESURFACING LONGITUDINAL DETAIL

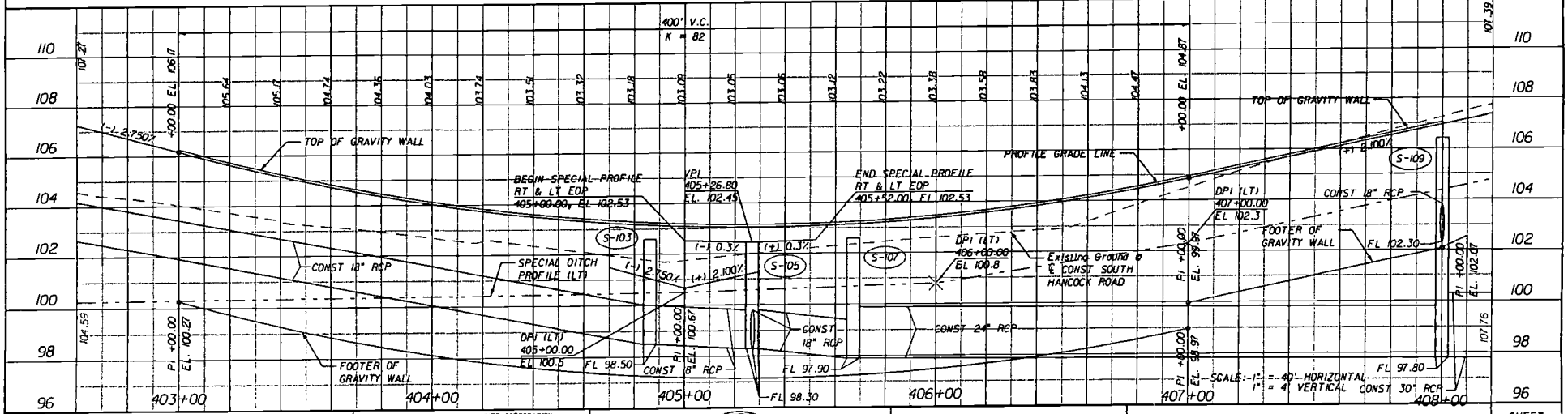
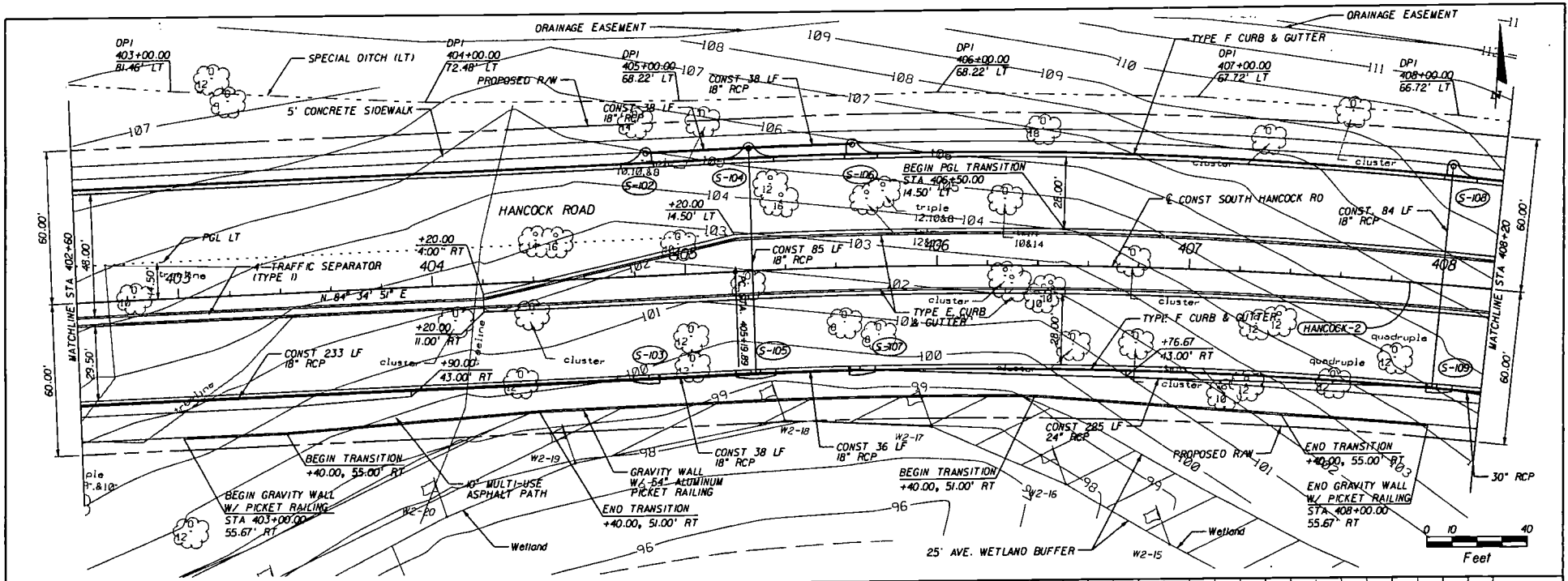


US 27 / SR 25 WIDENING AND SHOULDER PAVEMENT DETAIL



PATH SEPARATOR DETAIL

REVISIONS		HNTB ENGINEER OF RECORD: KAREN M. VAN DEN AVONT, P.E. FL. REGISTRATION NO. 44934	 HNTB HNTB CORPORATION 300 PRIMA BLVD. SUITE 200 LAKE WARE, FL 32746 (407) 805-0355 CERT. OF AUTH. NO. 6500	 LAKE COUNTY FLORIDA	SOUTH HANCOCK ROAD	TYPICAL SECTIONS	SHEET NO.
DATE	BY						



DATE	BY	DESCRIPTION

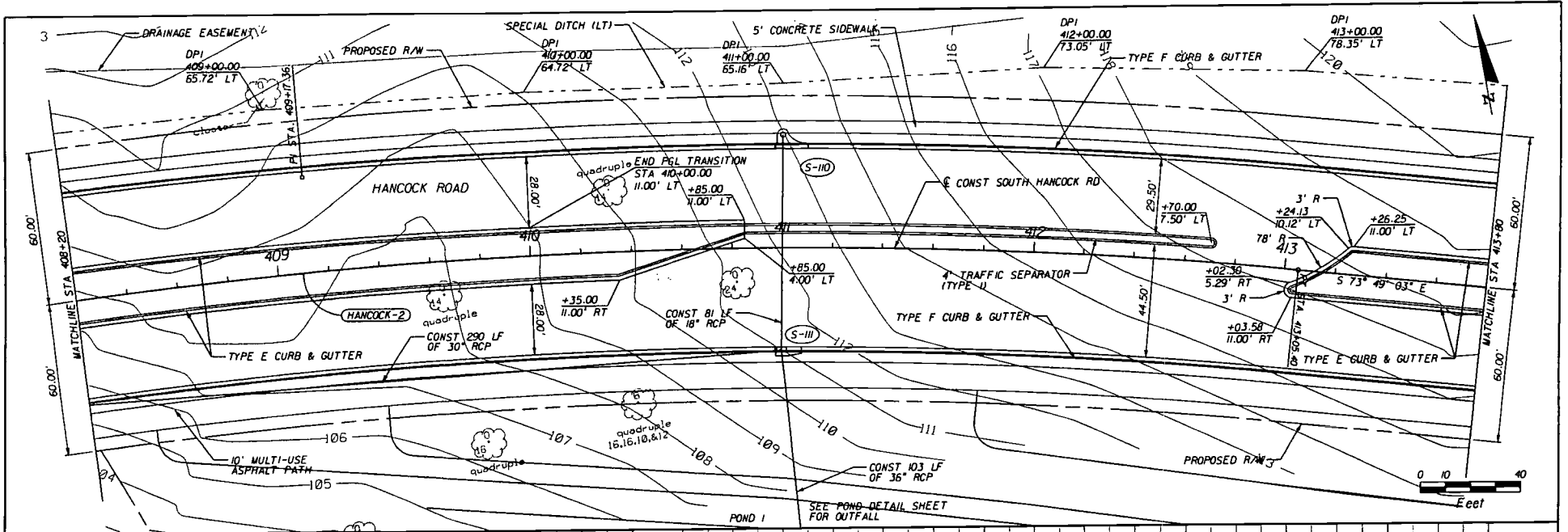
HNTB
 HNTB CORPORATION
 300 PRIMAVERA BLVD.
 SUITE 200
 LAKE HAVY, FL 32746
 (407) 805-0335
 CERT. OF AUTH. NO. 6500
 ENGINEER OF RECORD: KAREN M. VAN DER AVONT, P.E.
 FL. REGISTRATION NO. 44794



SOUTH HANCOCK ROAD

PLAN AND PROFILE

SHEET NO.



SEE NEXT SHEET FOR PROFILE

SCALE: 1" = 40' HORIZONTAL
 1" = 4' VERTICAL

REVISIONS	
DATE	DESCRIPTION

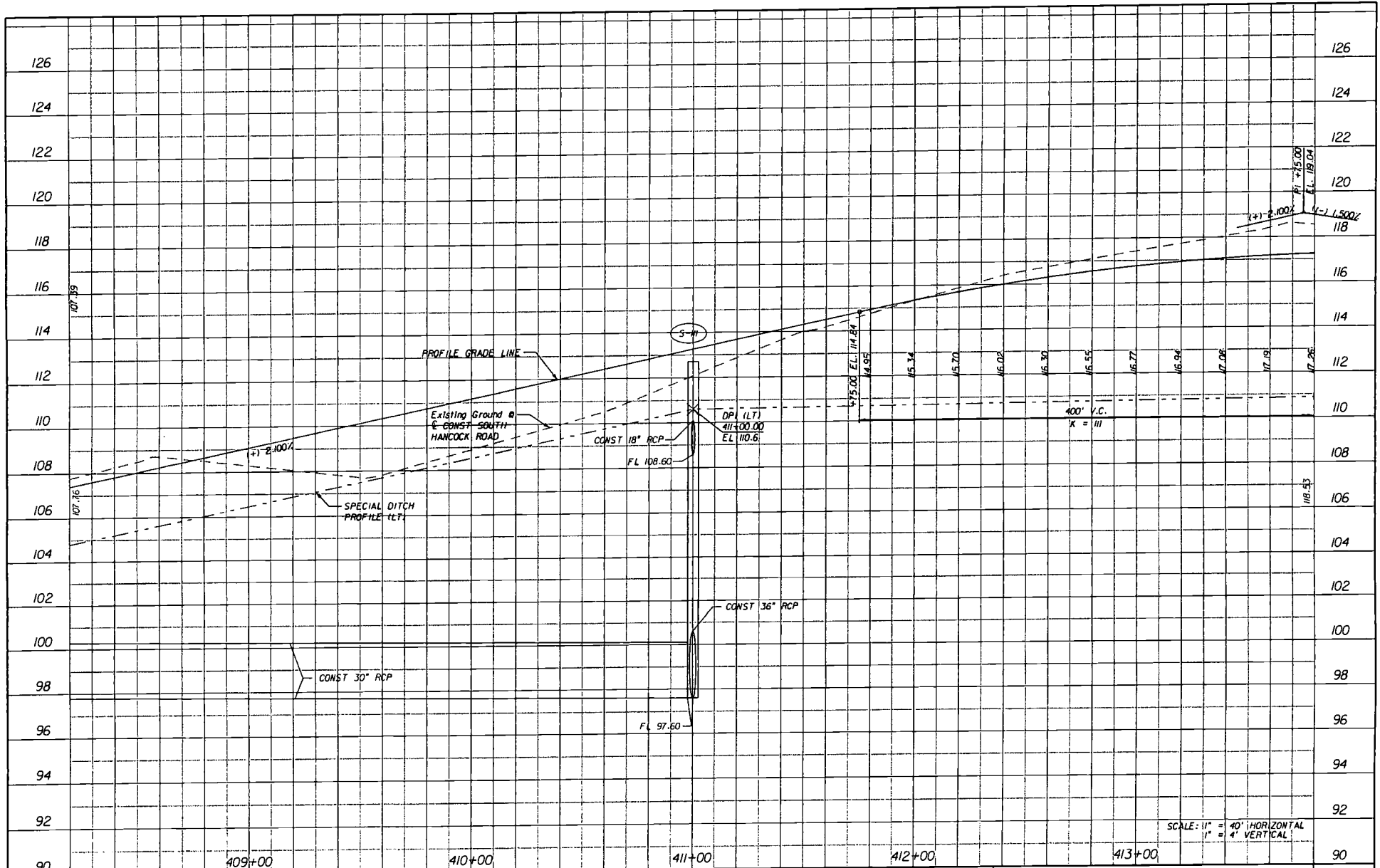
HNTB
 HNTB CORPORATION
 300 PRIMAVERA BLVD.
 SUITE 200
 LAKE HAVY, FL 32146
 (407) 805-0355
 CERT. OF AUTH. NO. 6500
 ENGINEER OF RECORD: KAREN W. VAN DEN AVONT, P.E.
 FL. REGISTRATION NO. 44794



**SOUTH HANCOCK
 ROAD**

PLAN AND PROFILE

SHEET NO.



REVISIONS	
DATE	DESCRIPTION

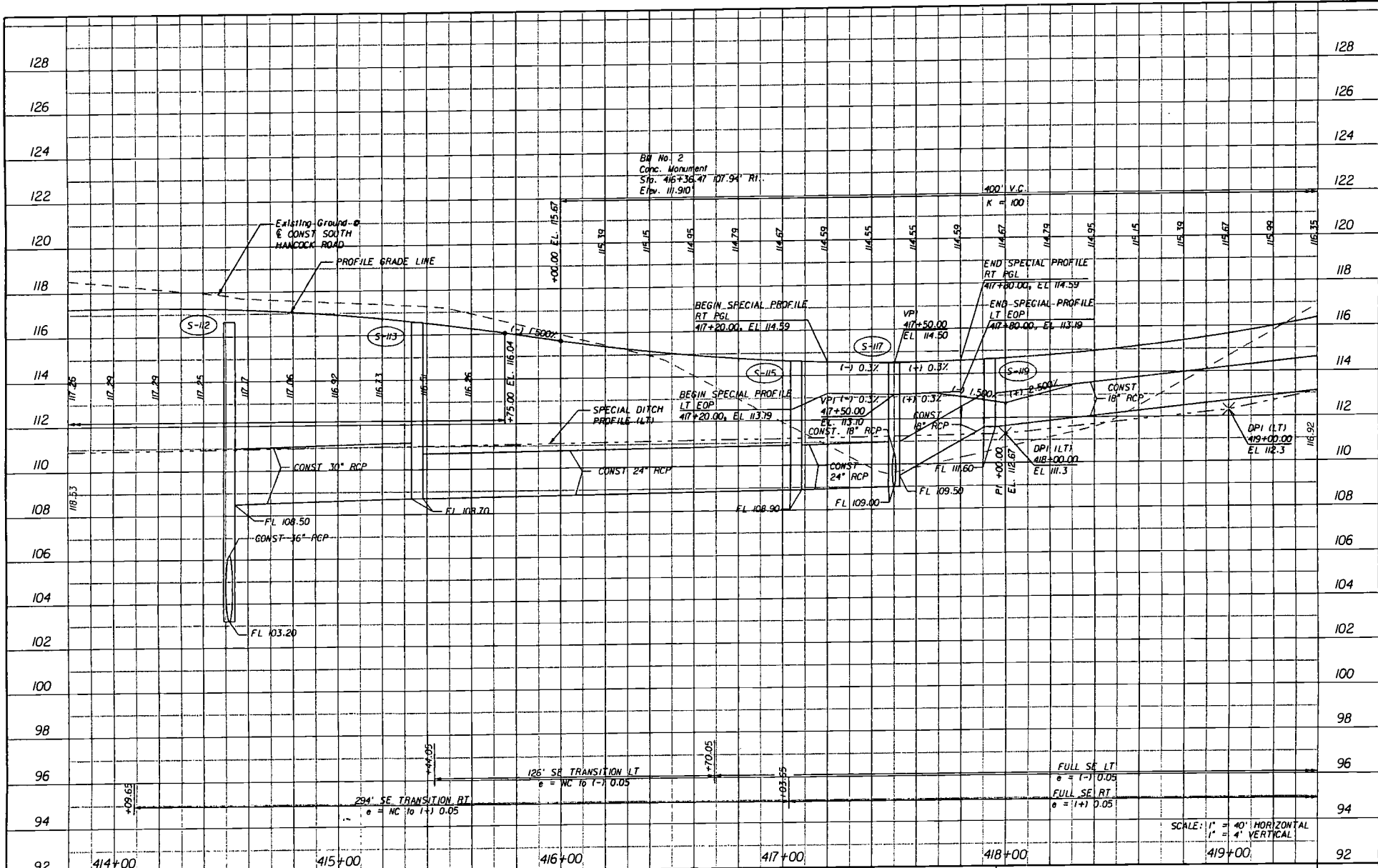
HNTB
 HNTB CORPORATION
 300 PRIMAVERA BLVD,
 SUITE 800
 LAKE MARY, FL 32746
 (407) 805-0355
 CERT. OF AUTH. NO. 6500
 ENGINEER OF RECORD: KAREN W. VAN DEN AVONT, P.E.
 FL. REGISTRATION NO. 44724



SOUTH HANCOCK ROAD

PLAN AND PROFILE

SHEET NO.



REVISIONS		
DATE	BY	DESCRIPTION

HNTB
 HNTB CORPORATION
 300 PRIMAVERA BLVD.
 SUITE 200
 LAKE HAVY, FL 32746
 (407) 802-0355
 CENT. OF MATH. NO. 6500
 ENGINEER OF RECORD: KAREN W. VAN DEN AKUNT, P.E.
 FL. REGISTRATION NO. 44794

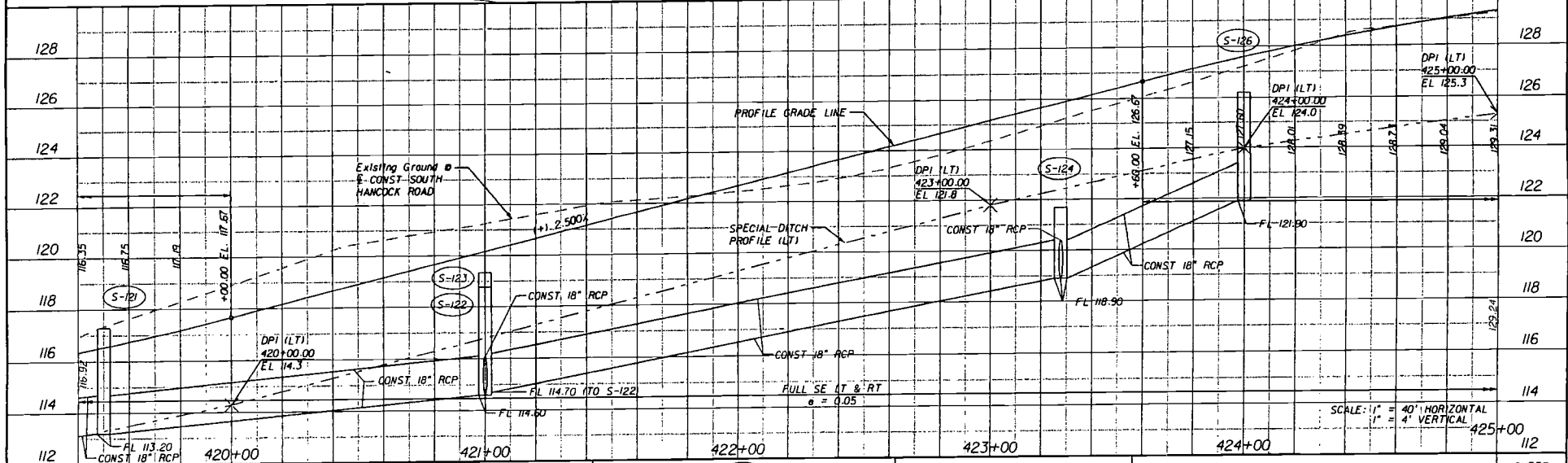
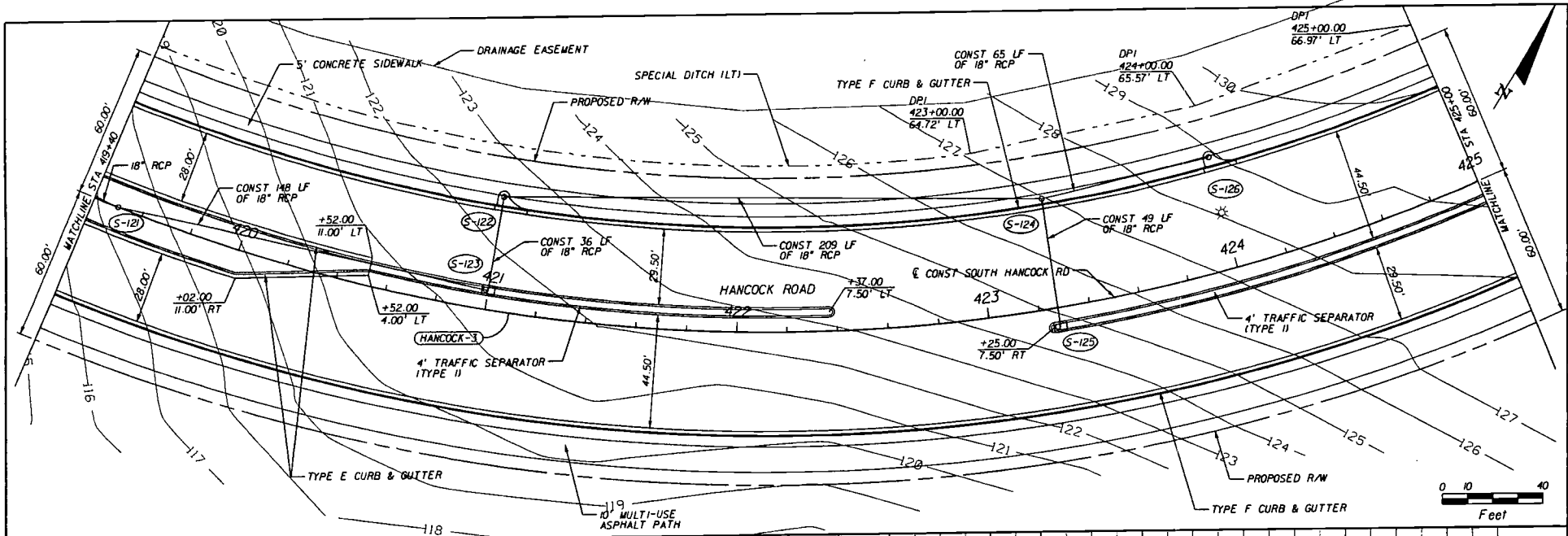


SOUTH HANCOCK ROAD

PLAN AND PROFILE

SCALE: 1" = 40' HORIZONTAL
 1" = 4' VERTICAL

SHEET NO.



REVISIONS	
DATE	DESCRIPTION

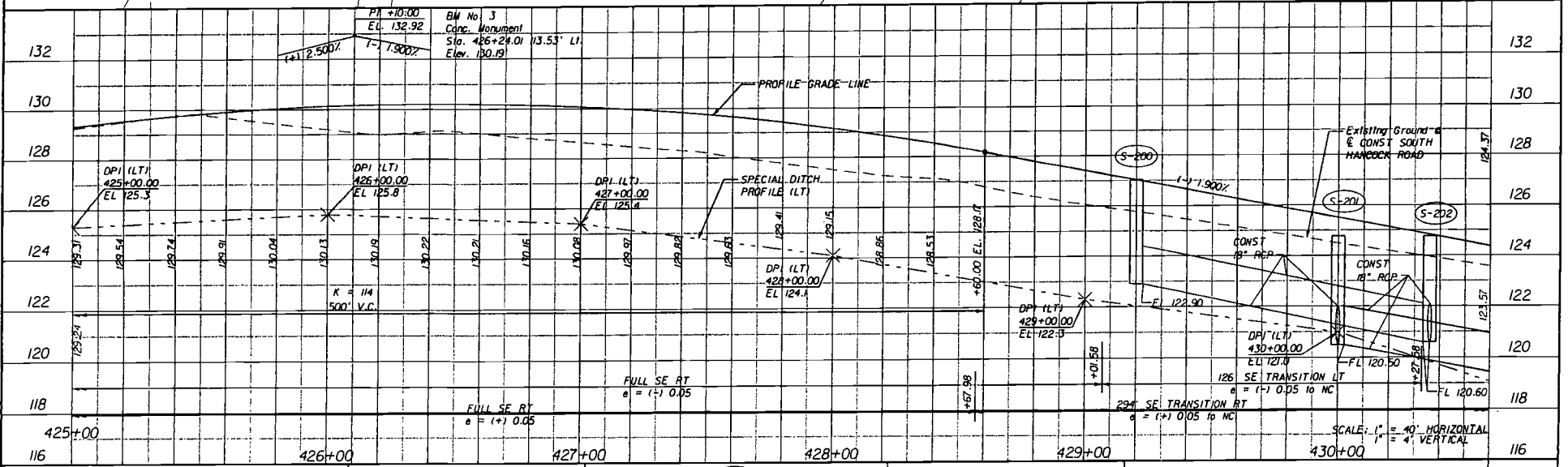
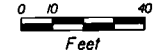
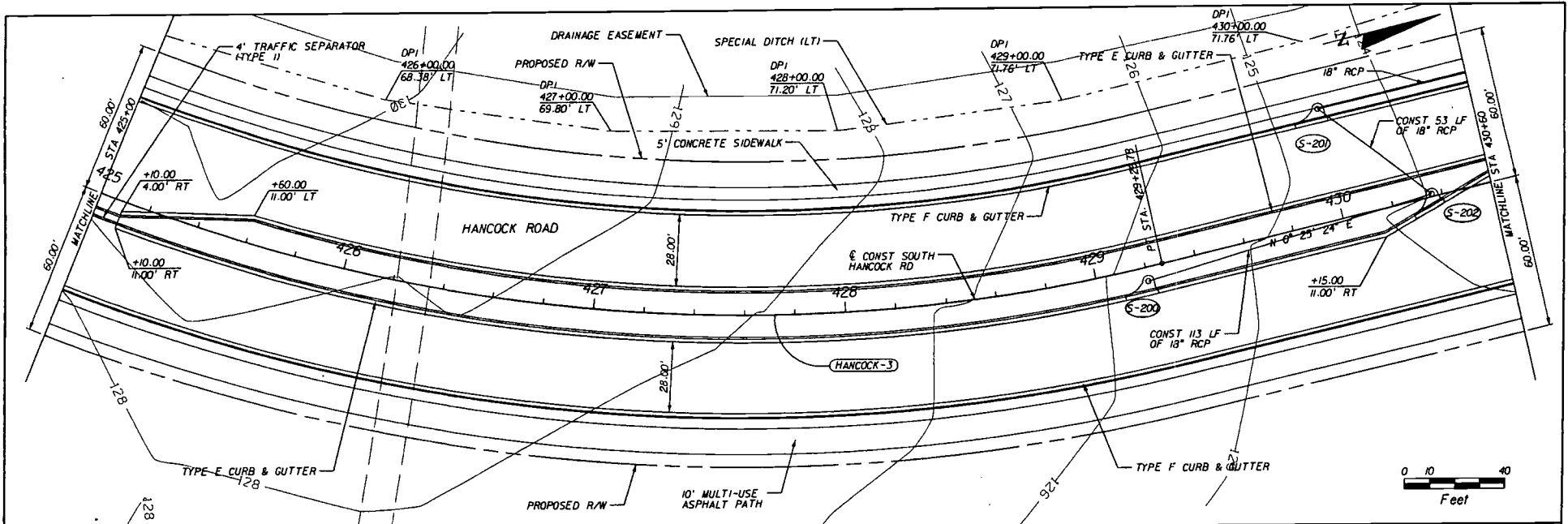
HNTB
 HNTB CORPORATION
 300 PRIMA BLVD.
 SUITE 200
 LAKE WARY, FL 32746
 (407) 805-0355
 CERT. OF AUTH. NO. 6500
 ENGINEER OF RECORD: KAREN W. VAN DEN AVENNT, P.E.
 FL. REGISTRATION NO. 44794



SOUTH HANCOCK ROAD

PLAN AND PROFILE

SHEET NO.



REVISIONS	
DATE	DESCRIPTION

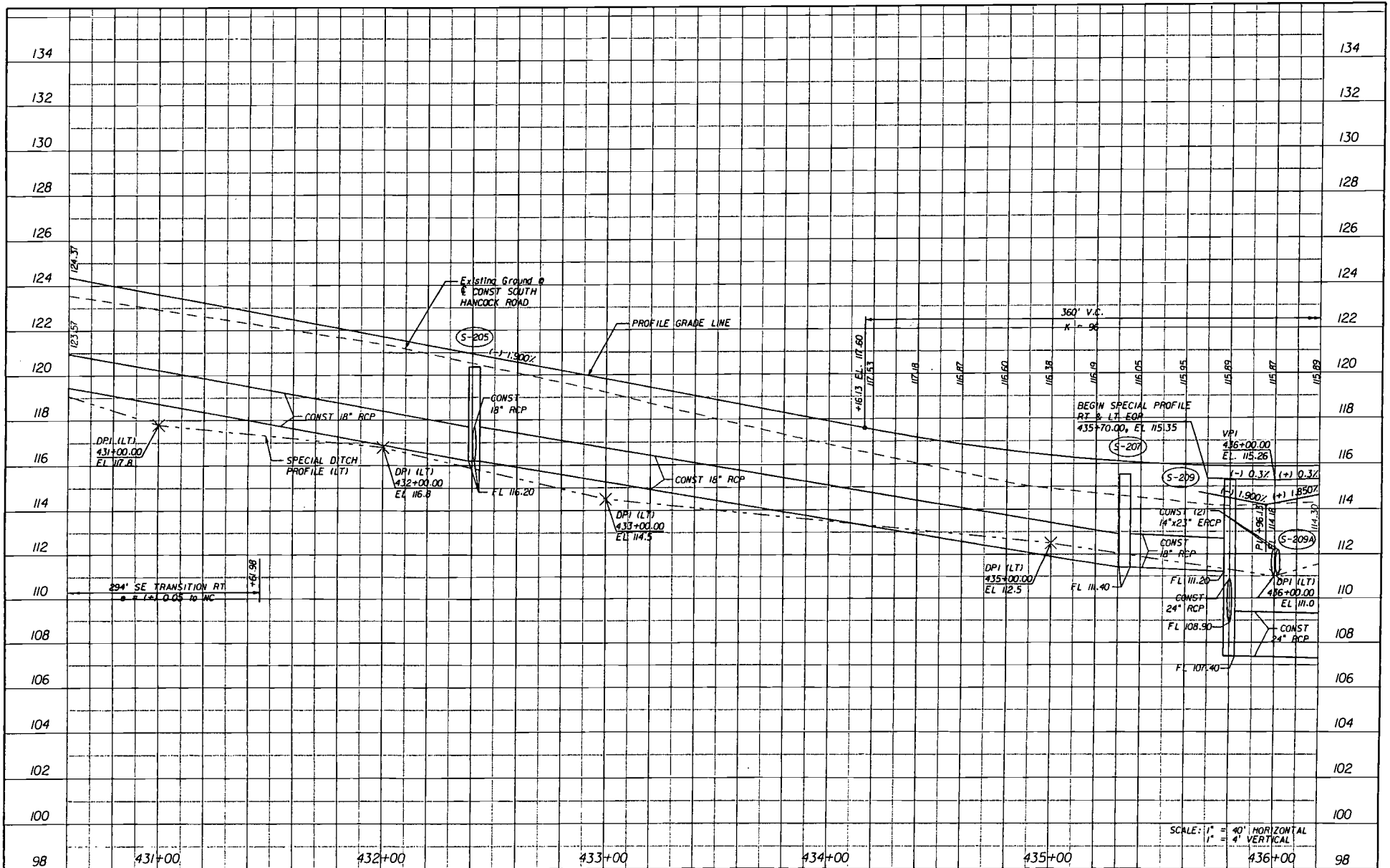
HNTB
 HNTB CORPORATION
 300 PRIMA BLVD.
 SUITE 200
 LAKE HAVY, FL 32746
 (407) 805-0355
 CERT. OF AUTH. NO. 6500
 ENGINEER OF RECORD: KAREN W. VAN DEN AVONT, P.E.
 FL. REGISTRATION NO. 44794



SOUTH HANCOCK ROAD

PLAN AND PROFILE

SHEET NO.



REVISIONS	
DATE	DESCRIPTION

HNTB
 HNTB CORPORATION
 300 PALMERA BLVD.
 SUITE 200
 LAKE HAVEN, FL 32746
 (407) 825-0355
 CERT. OF AUTH. NO. 6500
 ENGINEER OF RECORD: KAREN M. VAN DEN AVONT, P.E.
 FL. REGISTRATION NO. 44794

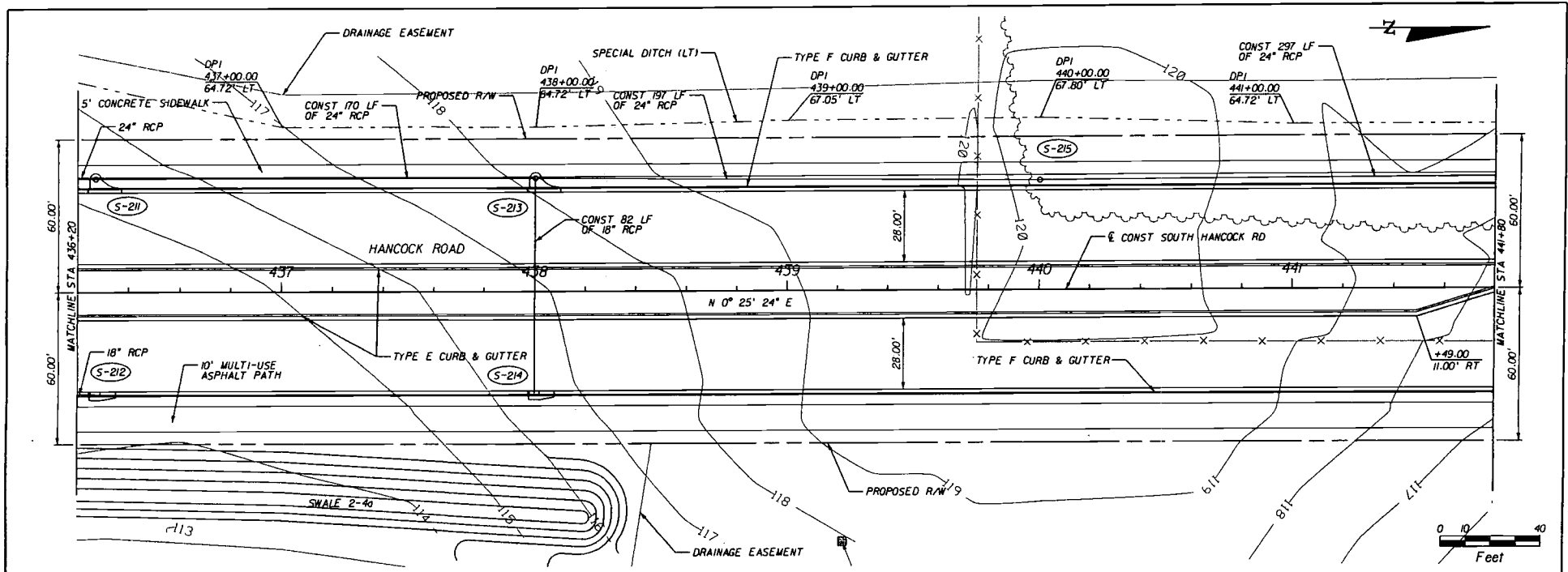
LAKE COUNTY
 FLORIDA

SOUTH HANCOCK ROAD

PLAN AND PROFILE

SHEET NO.

SCALE: 1" = 40' HORIZONTAL
 1" = 4' VERTICAL



122										122
120										120
118										118
116										116
114										114
112										112
110										110
108										108

SEE NEXT SHEET FOR PROFILE

SCALE: 1" = 40' HORIZONTAL
1" = 4' VERTICAL

REVISIONS	
DATE	DESCRIPTION

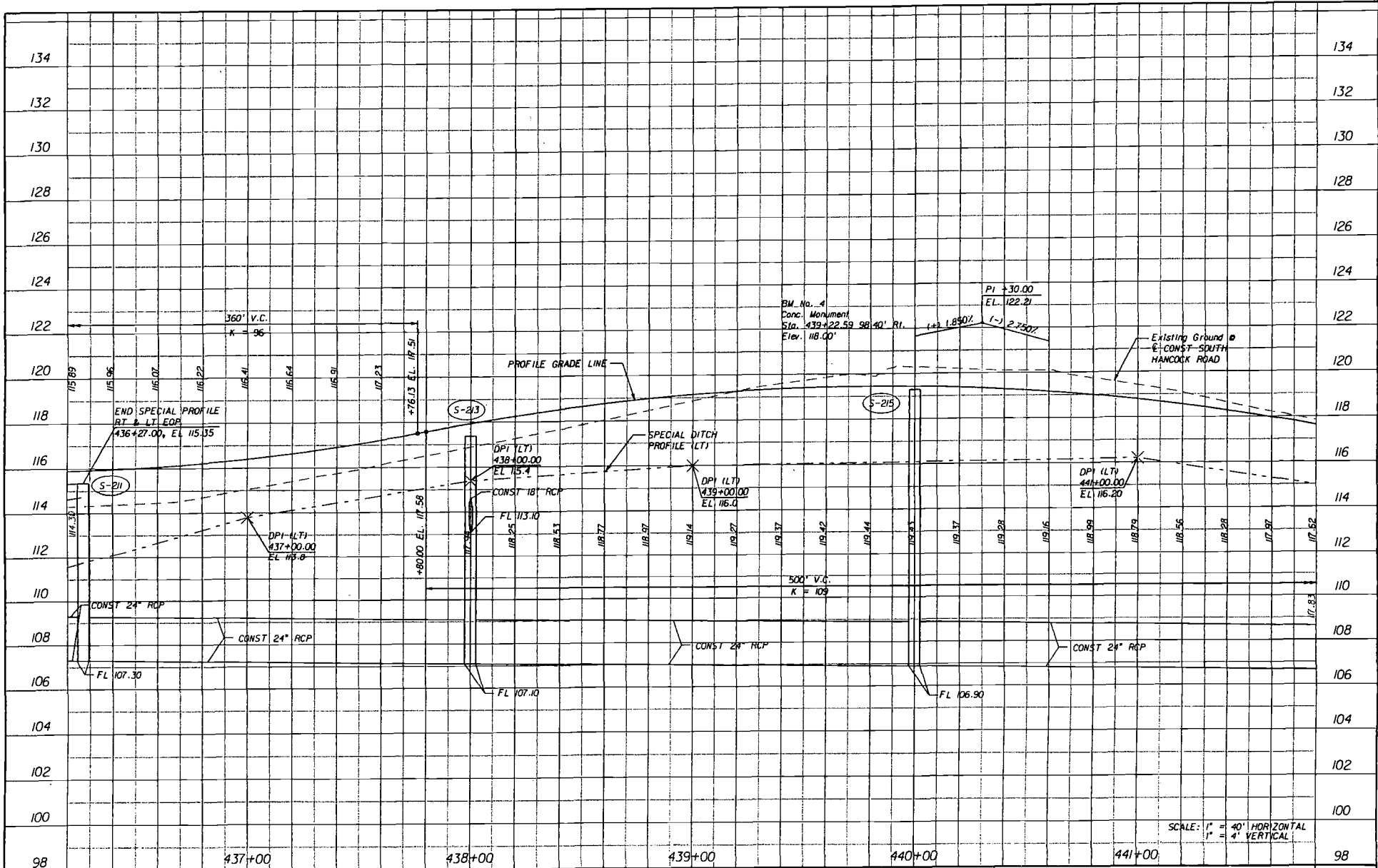
HNTB
 HNTB CORPORATION
 300 PRIMA BLVD.
 SUITE 200
 LAKE HAVY, FL 32746
 (407) 802-0355
 CERT. OF AUTH. NO. 6300
 ENGINEER OF RECORD: KAREN U. VAN DEN AVONT, P.E.
 FL. REGISTRATION NO. 4494



SOUTH HANCOCK ROAD

PLAN AND PROFILE

SHEET NO.



SCALE: 1" = 40' HORIZONTAL
1" = 4' VERTICAL

REVISIONS	
DATE	DESCRIPTION

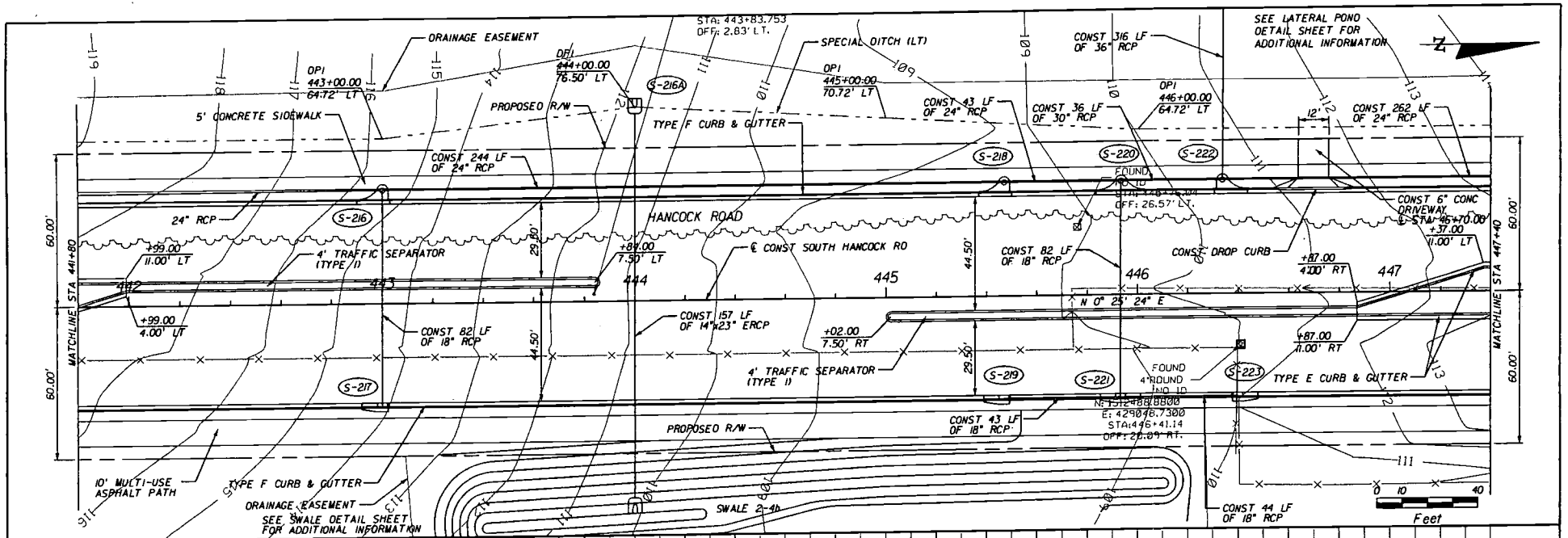
HNTB
 HNTB CORPORATION
 300 PRIMA BLVD.
 SUITE 200
 LAKE WARE, FL 32746
 (407) 805-0355
 CERT. OF AUTH. NO. 6500
 ENGINEER OF RECORD: KAREN M. VAN DEN AVONT, P.E.
 FL. REGISTRATION NO. 44794

LAKE COUNTY
 FLORIDA

SOUTH HANCOCK ROAD

PLAN AND PROFILE

SHEET NO.



SEE NEXT SHEET FOR PROFILE

120										120
118										118
116										116
114										114
112										112
110										110
108										108
106										106
104	442+00	443+00	444+00	445+00	446+00	447+00				104

SCALE: 1" = 40' HORIZONTAL
1" = 4' VERTICAL

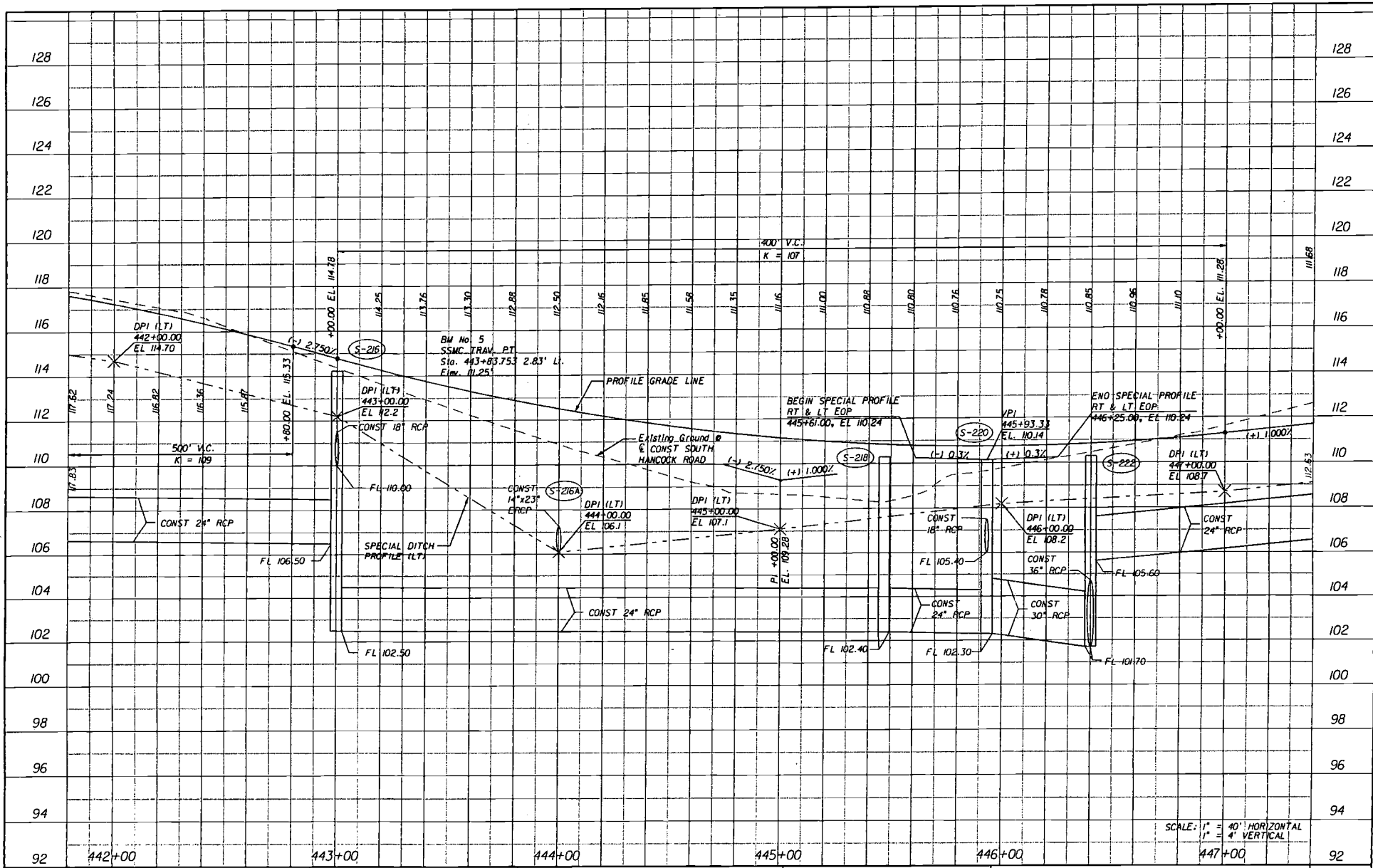
REVISIONS	
DATE	DESCRIPTION

HNTB
 HNTB CORPORATION
 300 PRIMA BLVD,
 SUITE 200
 LAKE HAVY, FL 32746
 (407) 805-0355
 CERT. OF AUTH. NO. 6500
 ENGINEER OF RECORD: KAREN M. VAN DEN AVONT, P.E.
 FL. REGISTRATION NO. 44794

LAKE COUNTY
 FLORIDA

SOUTH HANCOCK ROAD

PLAN AND PROFILE
 SHEET NO.



SCALE: 1" = 40' HORIZONTAL
1" = 4' VERTICAL

REVISIONS	
DATE	DESCRIPTION

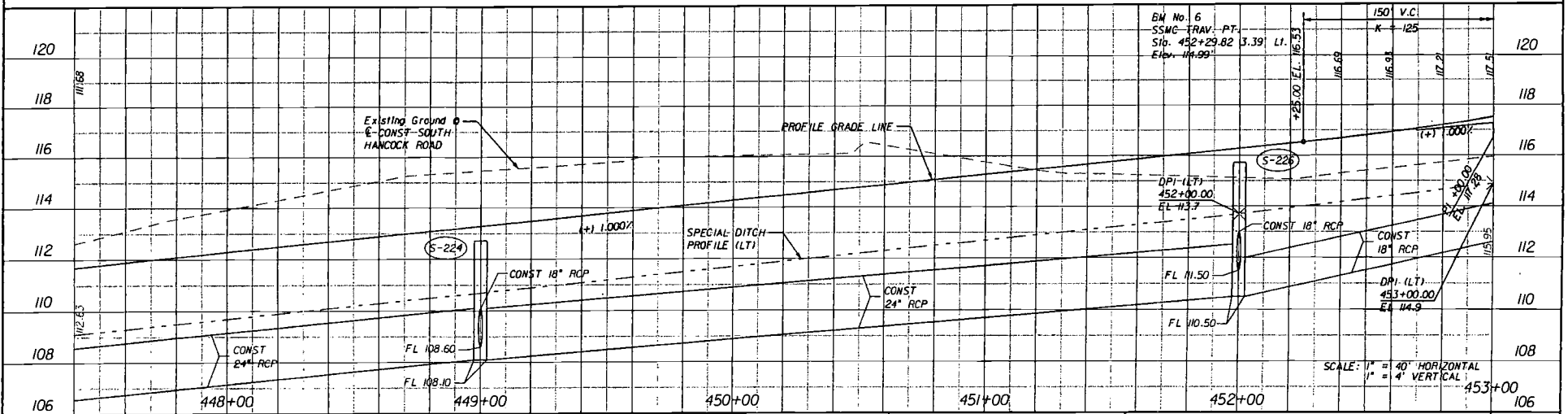
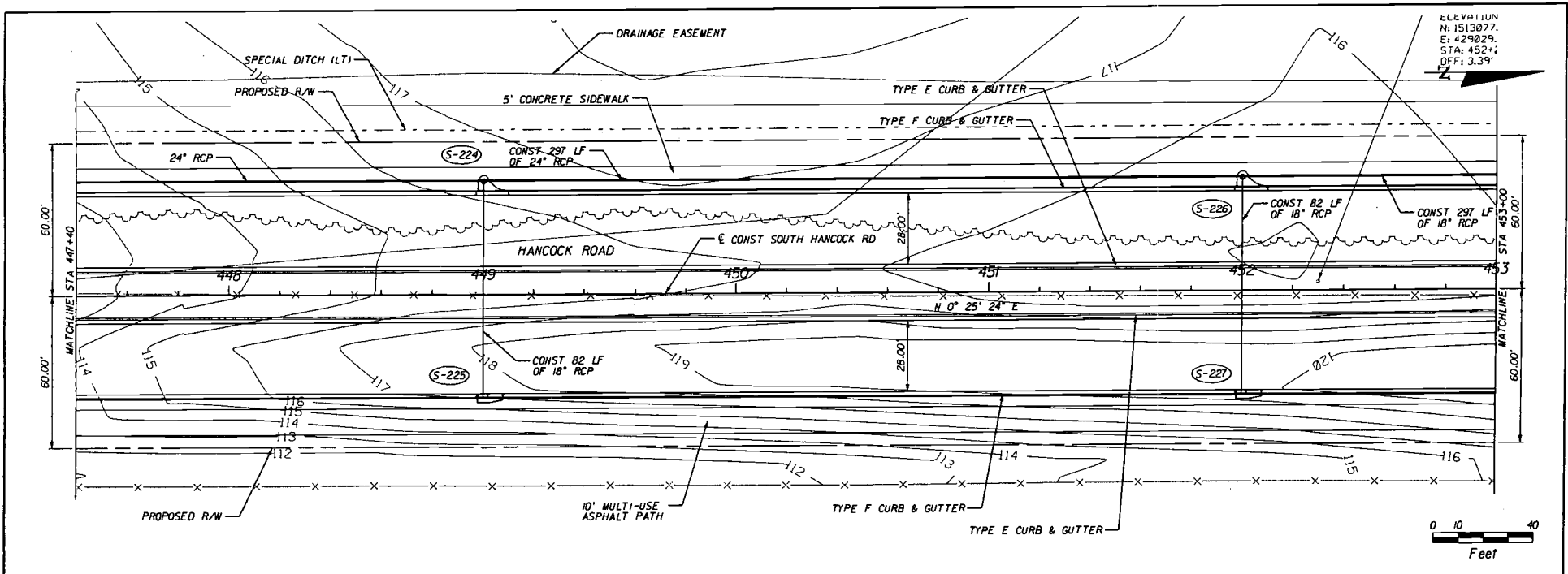
HNTB
 HNTB CORPORATION
 300 PRIMA BLVD.
 SUITE 200
 LAKE WARE, FL 32746
 (407) 805-0355
 CERT. OF AUTH. NO. 6500
 ENGINEER OF RECORD: KAREN M. VAN DEN AVONT, P.E.
 FL. REGISTRATION NO. 44794

LAKE COUNTY
 FLORIDA

SOUTH HANCOCK ROAD

PLAN AND PROFILE

SHEET NO.



REVISIONS	
DATE	DESCRIPTION

HNTB
 HNTB CORPORATION
 300 PRIMAVERA BLVD,
 SUITE 200
 LAKE WARE, FL 32746
 (407) 805-0355
 CERT. OF AUTH. NO. 6500

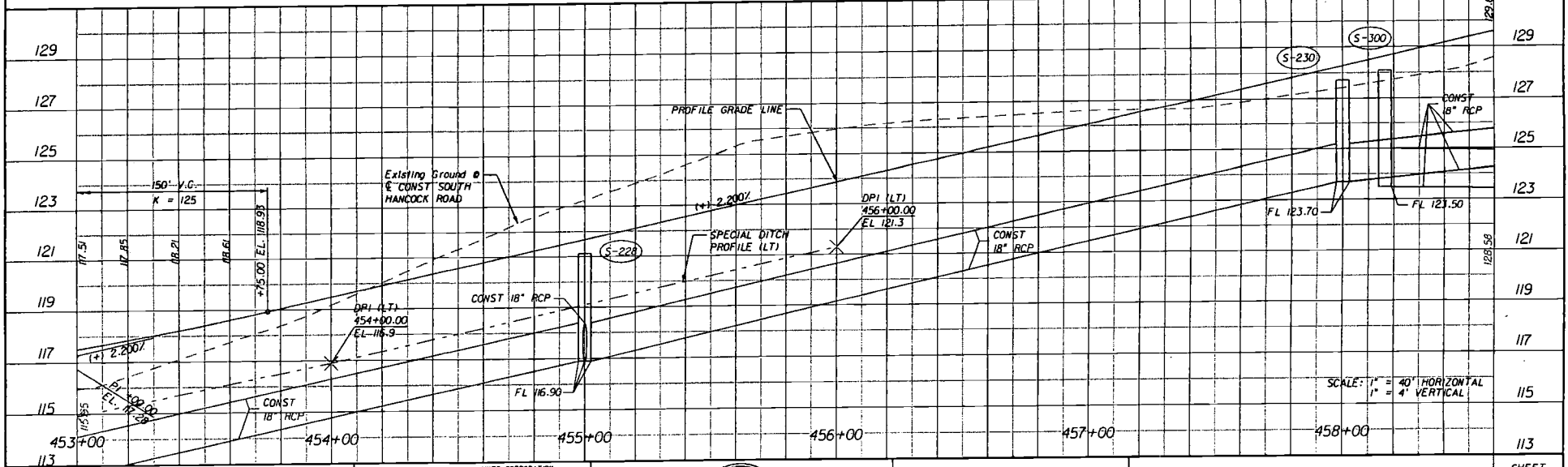
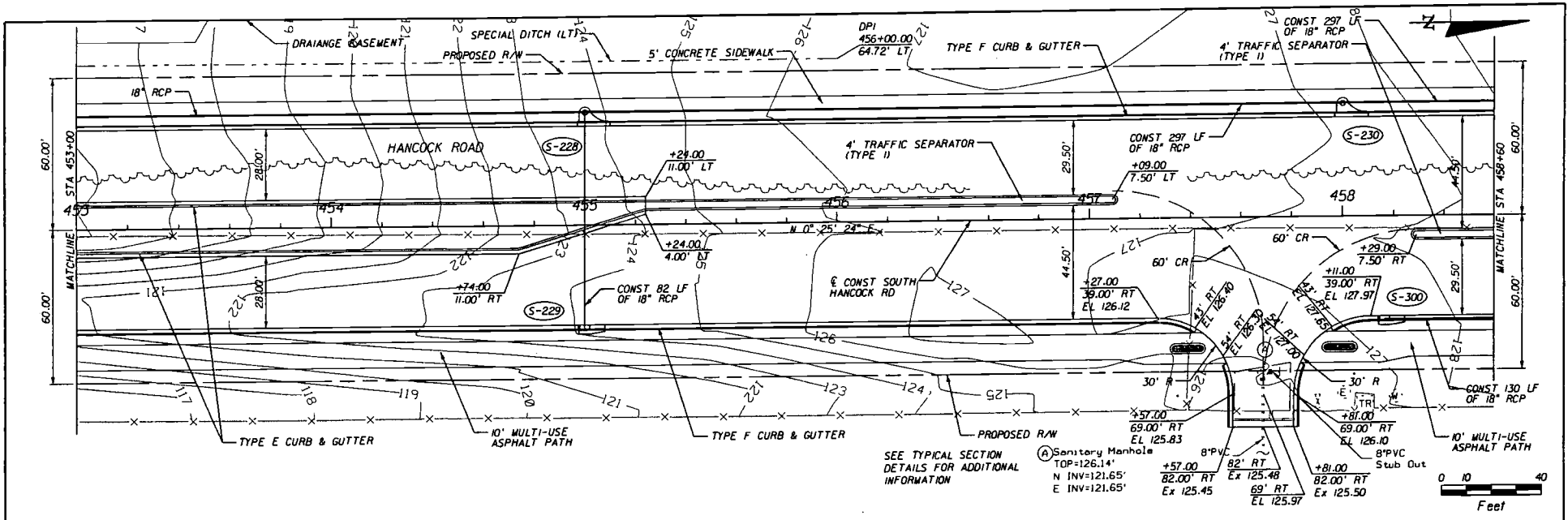
ENGINEER OF RECORD: KAREN M. VAN DEN AVONT, P.E.
 FL. REGISTRATION NO. 44794



SOUTH HANCOCK ROAD

PLAN AND PROFILE

SHEET NO.



REVISIONS	
DATE	DESCRIPTION

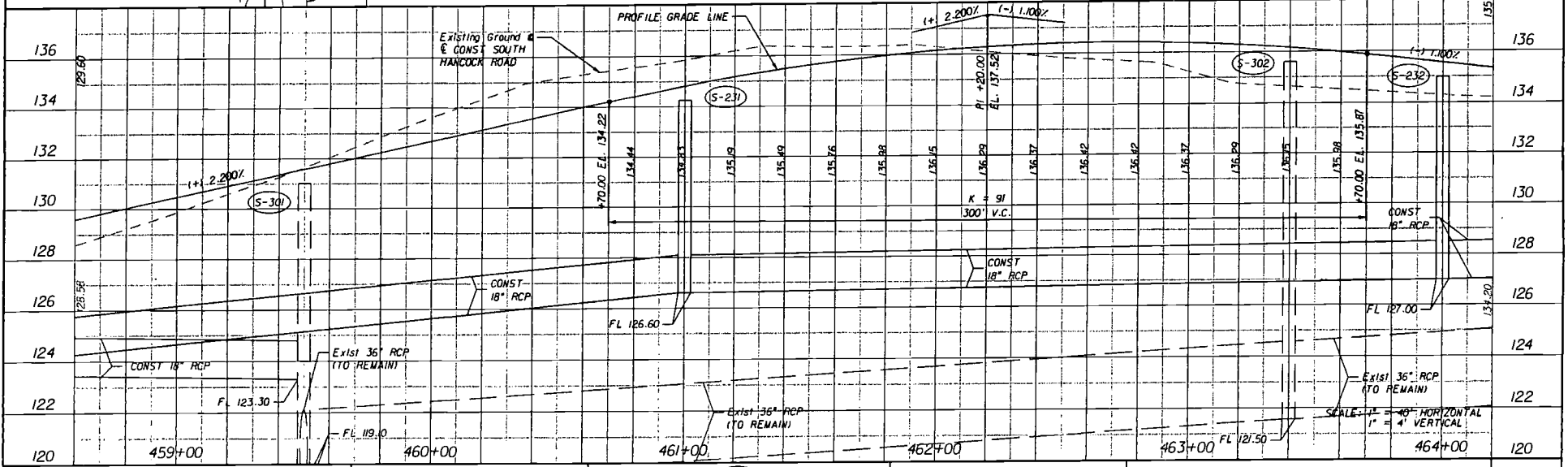
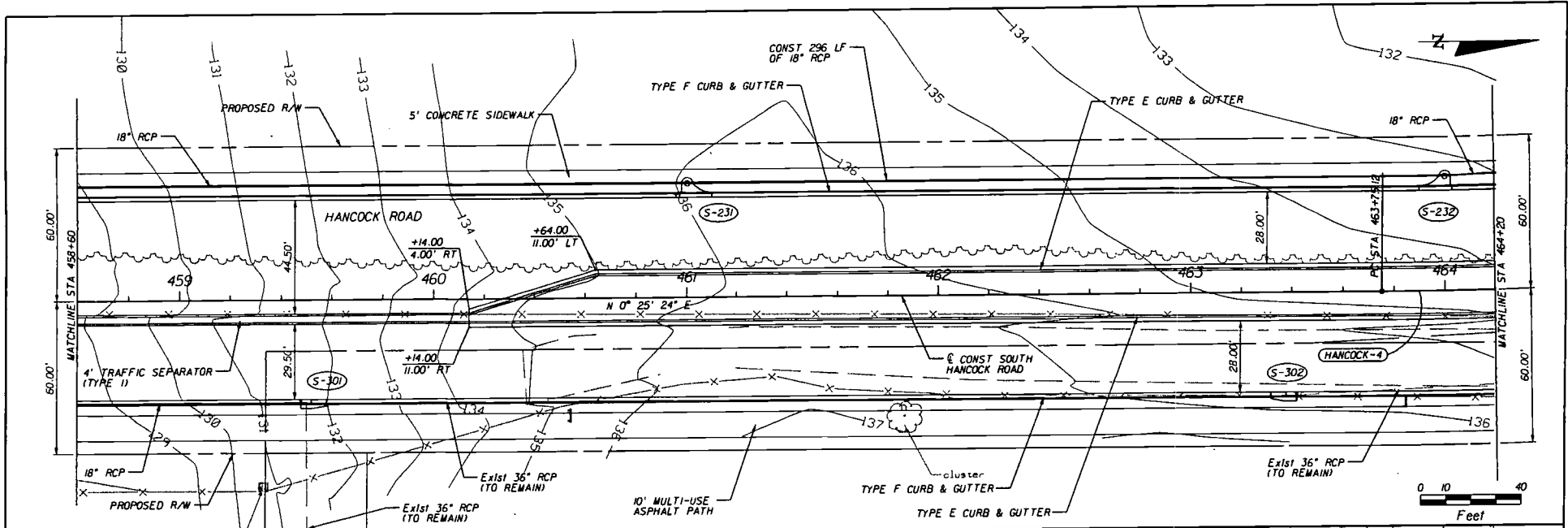
HNTB
 HNTB CORPORATION
 300 PRIMAVERA BLVD.
 SUITE 200
 LAKE WARE, FL 32946
 (407) 805-0355
 CERT. OF AUTH. NO. 6500
 ENGINEER OF RECORD: KAREN M. VAN DEN AVONT, P.E.
 FL. REGISTRATION NO. 44794

LAKE COUNTY
 FLORIDA

SOUTH HANCOCK ROAD

PLAN AND PROFILE

SHEET NO. 129



REVISIONS	
DATE	DESCRIPTION

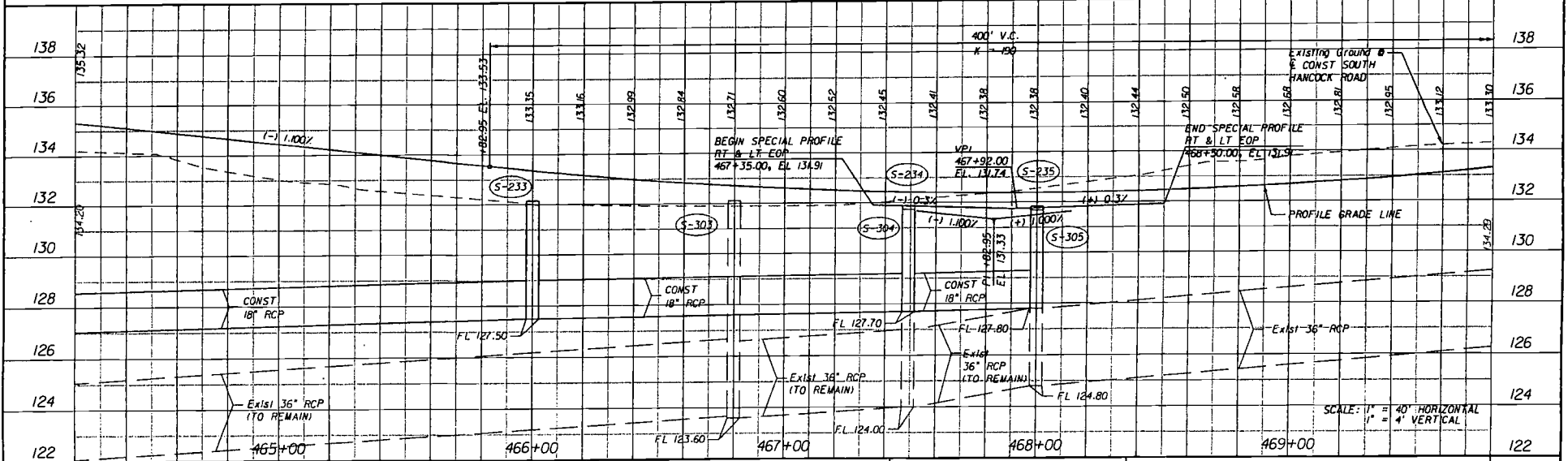
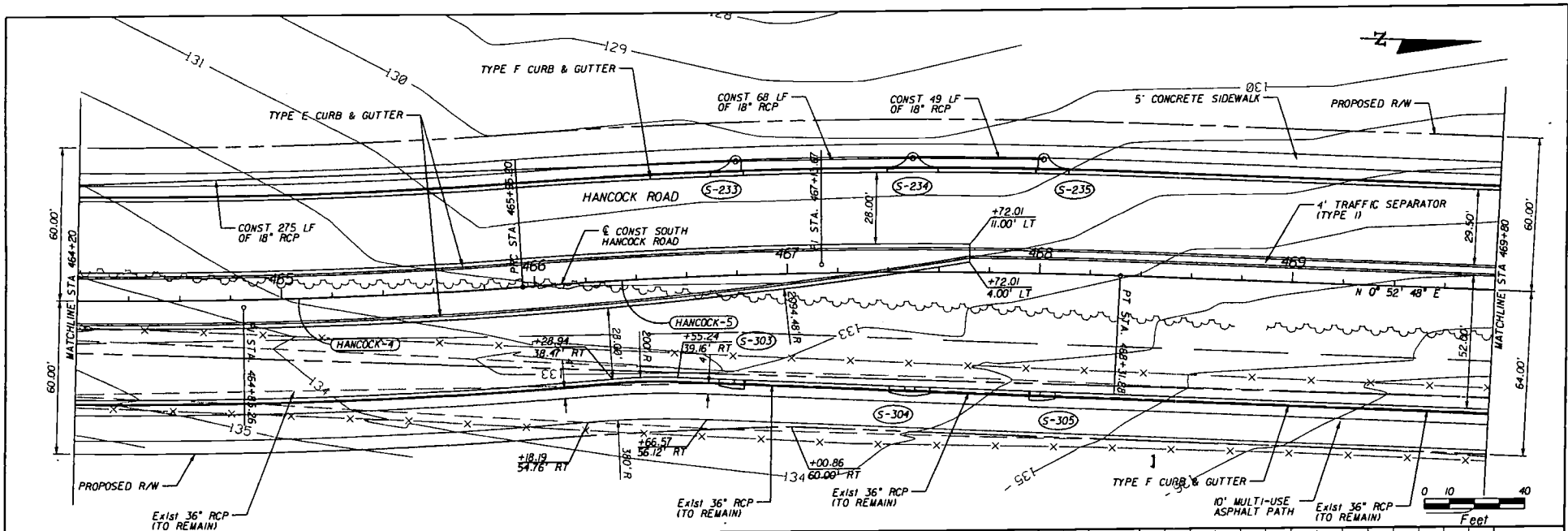
HNTB
 HNTB CORPORATION
 300 PRIMA BLVD.
 SUITE 200
 LAKE WARY, FL 32746
 (407) 803-2155
 CERT. OF N.W.H. NO. 6500
 ENGINEER OF RECORD: KAREN M. VAN DEN AVONT, P.E.
 FL. REGISTRATION NO. 44794



SOUTH HANCOCK ROAD

PLAN AND PROFILE

SHEET NO. _____



REVISIONS	
DATE	DESCRIPTION

HNTB
 HNTB CORPORATION
 300 PRIMAVERA BLVD.
 SUITE 200
 LAKE WALKER, FL 32746
 (407) 805-0355
 CERT. OF AUTH. NO. 6500

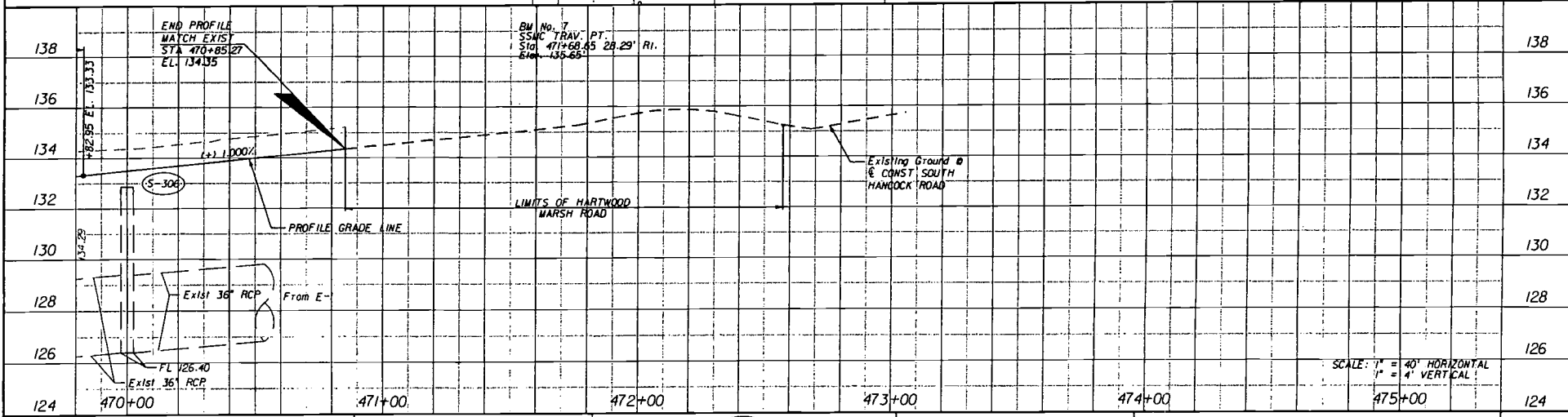
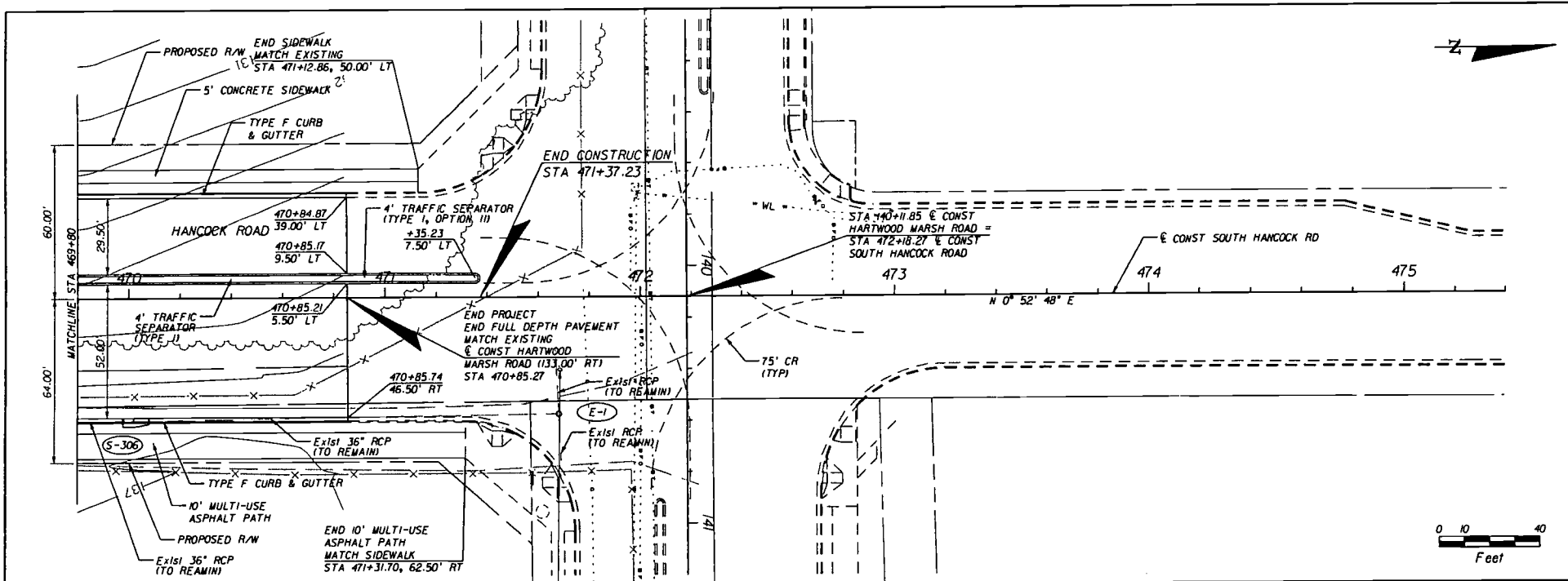
ENGINEER OF RECORD: KAREN M. VAN DEN AVONT, P.E.
 FL. REGISTRATION NO. 44794



SOUTH HANCOCK ROAD

PLAN AND PROFILE

SHEET NO. _____



REVISIONS	
DATE	DESCRIPTION

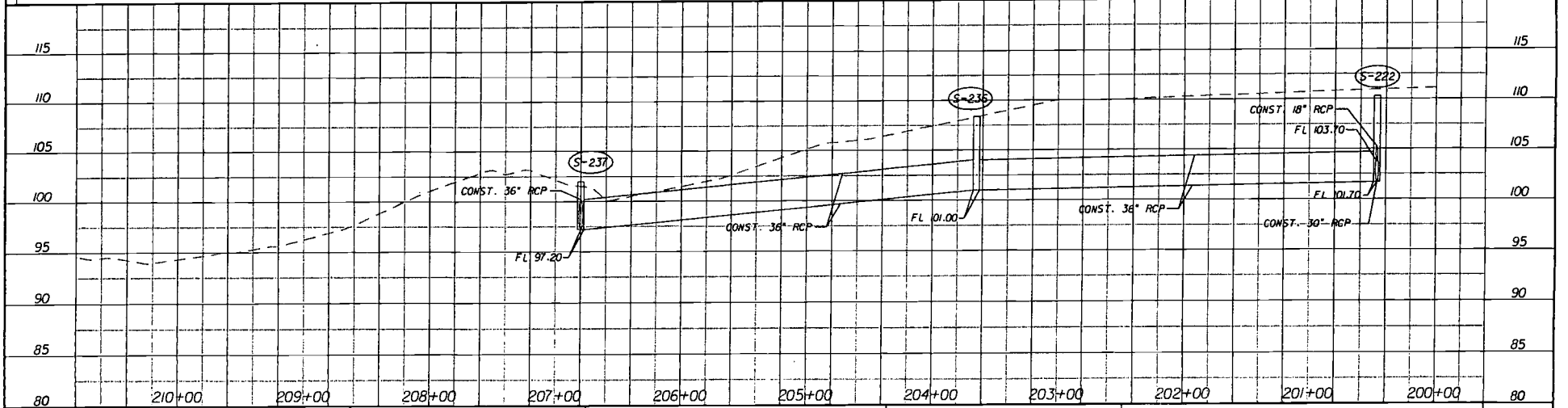
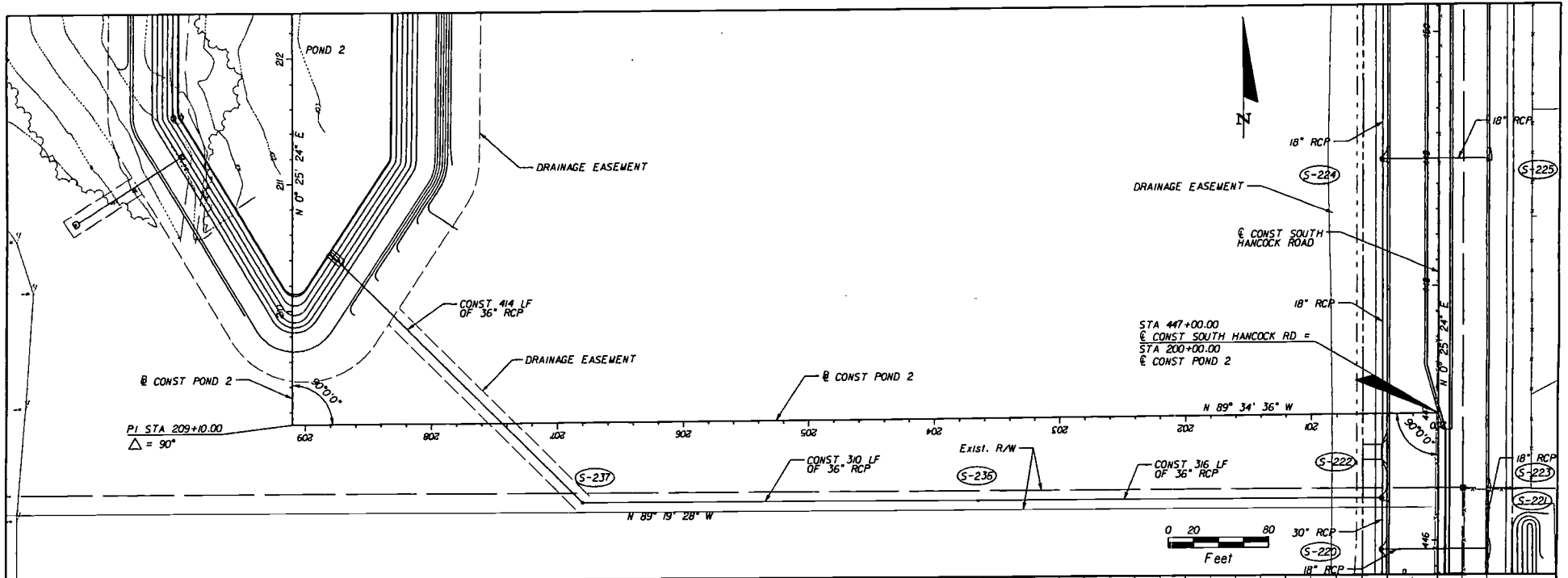
HNTB
 HNTB CORPORATION
 300 PRIMA BLDG,
 SUITE 200
 LAKE WARY, FL 32746
 (407) 802-0355
 CERT. OF AUTH. NO. 6500
 ENGINEER OF RECORD: KAREN W. VAN DEN AVONT, P.E.
 FL. REGISTRATION NO. 44794



**SOUTH HANCOCK
ROAD**

PLAN AND PROFILE

SHEET
NO.



REVISIONS	
DATE	DESCRIPTION

HNTB
 HNTB CORPORATION
 300 PRIMA BLVD.
 SUITE 800
 LAKE HAVY, FL 32746
 (407) 803-0355
 CERT. OF AUTH. NO. 6500
 ENGINEER OF RECORD: KAREN M. VAN DEN AVONT, P.E.
 FL. REGISTRATION NO. 44794

LAKE COUNTY
 FLORIDA

SOUTH HANCOCK ROAD

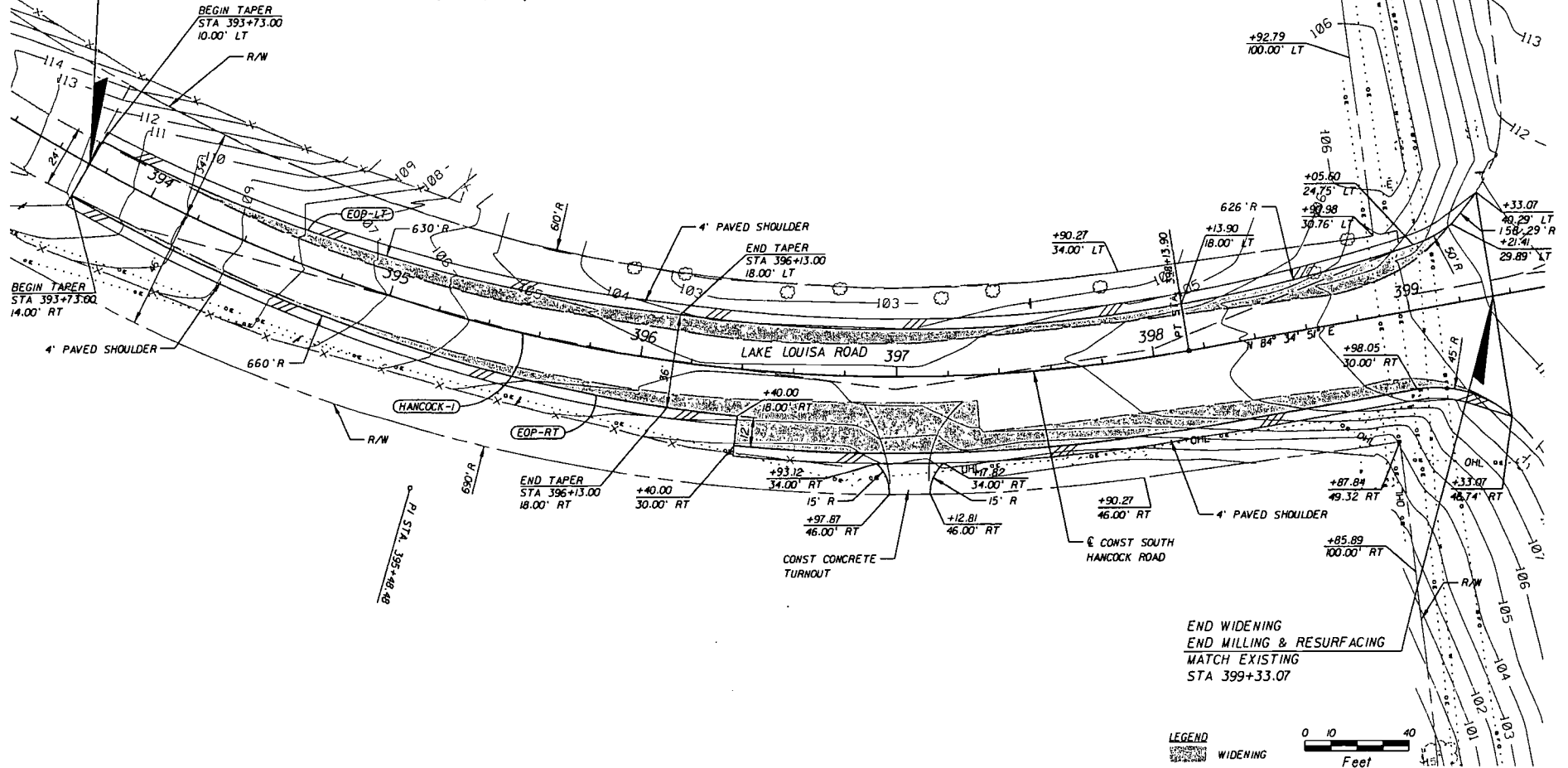
LATERAL OUTFALL PLAN AND PROFILE

SHEET NO.

BEGIN CONSTRUCTION
 BEGIN WIDENING
 BEGIN MILLING & RESURFACING
 MATCH EXISTING
 STA 393+73.00

CURVE EOP-RT
 PI Sta = 394+93.00, 27.63' RT
 Delta = 2° 21' 19"
 D = 8° 40' 52"
 T = 118.84'
 L = 234.92'
 R = 660.00'
 PC Sta = 393+73.00, 14.00' RT
 PT Sta = 396+13.00, 18.00' RT

CURVE EOP-LT
 PI Sta = 394+93.00, 2.89' LT
 Delta = 2° 21' 53"
 D = 9° 05' 40"
 T = 124.44'
 L = 245.99'
 R = 630.00'
 PC Sta = 393+73.00, 10.00' LT
 PT Sta = 396+13.00, 18.00' LT



END WIDENING
 END MILLING & RESURFACING
 MATCH EXISTING
 STA 399+33.07

LEGEND
 WIDENING



REVISIONS	
DATE	DESCRIPTION

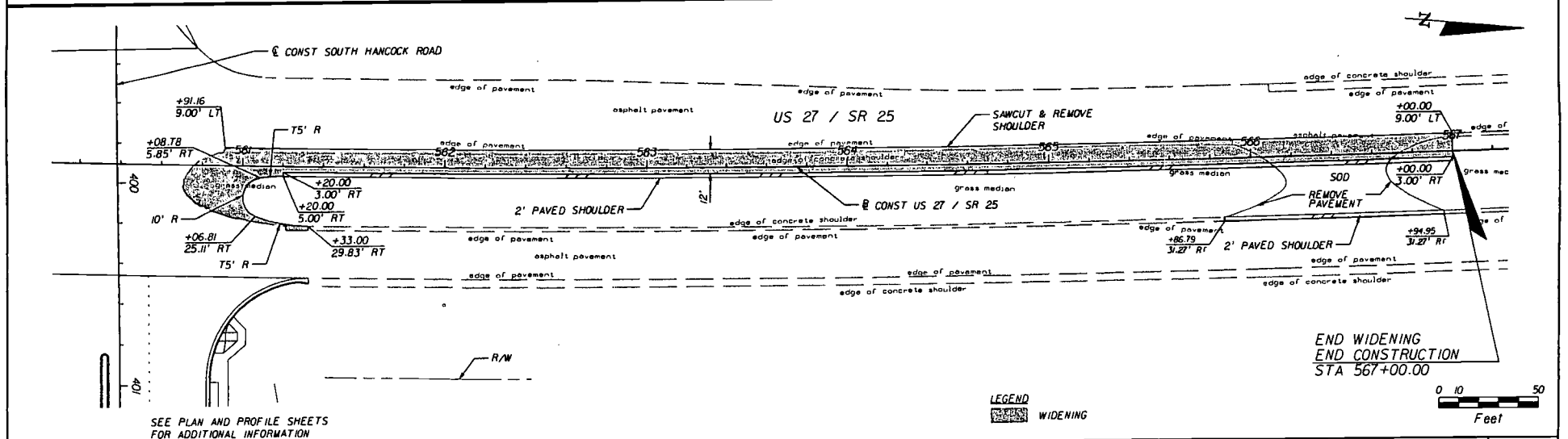
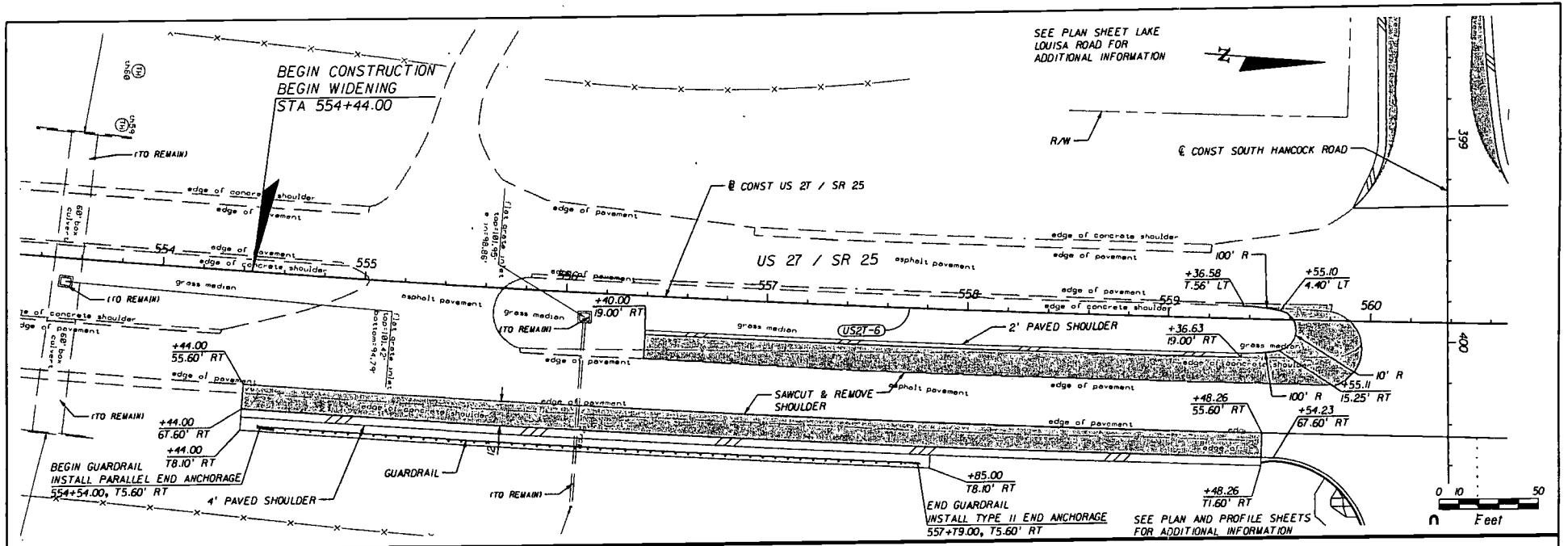
HNTB
 HNTB CORPORATION
 300 PRINERA BLVD.
 SUITE 200
 LAKE WARD, FL 32746
 (407) 805-0355
 CERT. OF AUTH. NO. 6500
 ENGINEER OF RECORD: KAREN N. VAN DEN AVONT, P.E.
 FL. REGISTRATION NO. 44794



**SOUTH HANCOCK
 ROAD**

**PLAN SHEET
 LAKE LOUISA ROAD**

SHEET
 NO.



SEE PLAN AND PROFILE SHEETS FOR ADDITIONAL INFORMATION

LEGEND
 WIDENING

REVISIONS	
DATE	DESCRIPTION

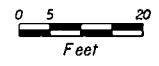
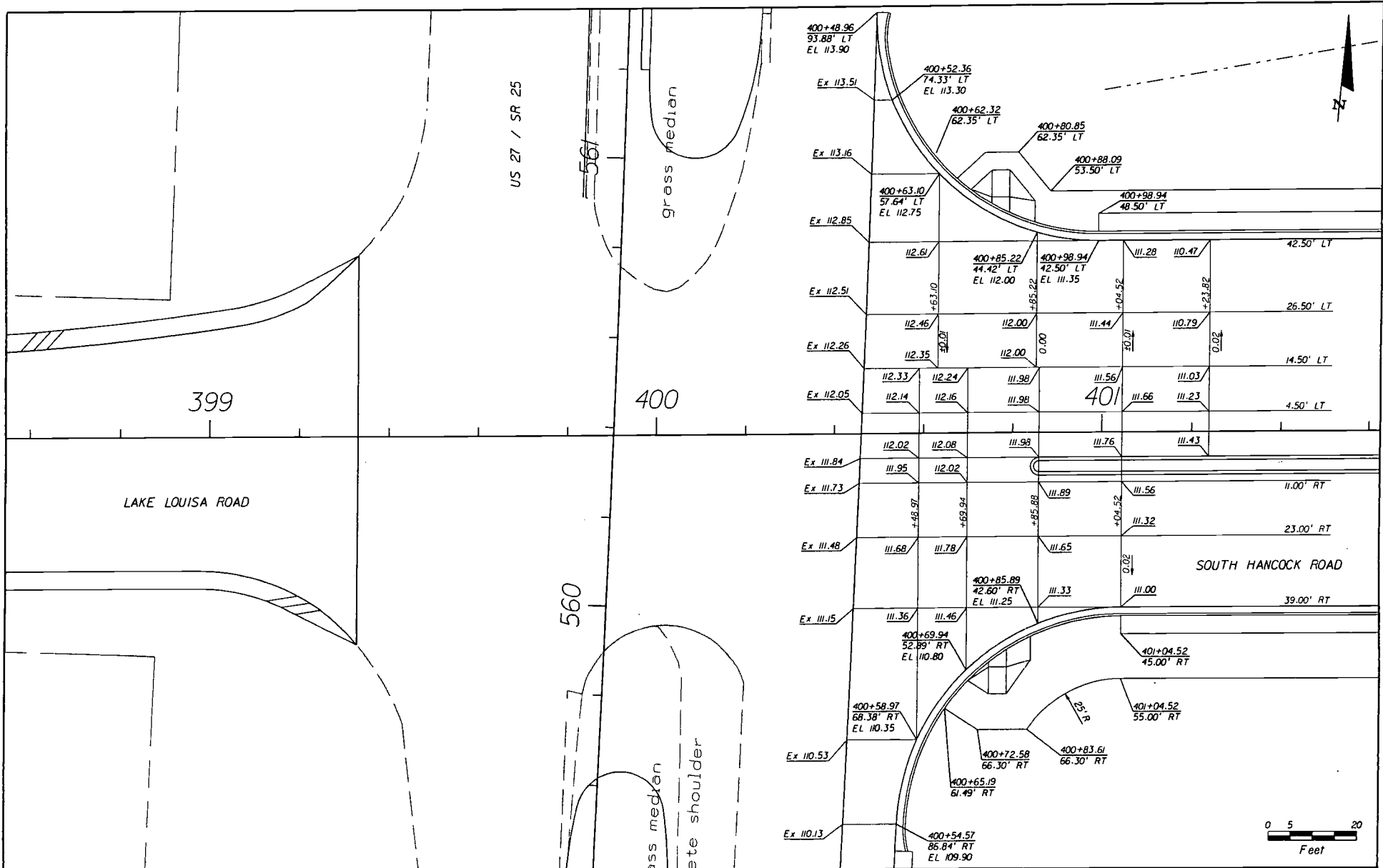
HNTB
 HNTB CORPORATION
 300 PRIMAVERA BLVD.
 SUITE 200
 LAKE WORTH, FL 32746
 (407) 805-0355
 CERT. OF AUTH. NO. 6500
 ENGINEER OF RECORD: KAREN M. VAN DEN AVONK, P.E.
 FL. REGISTRATION NO. 44794

LAKE COUNTY
 FLORIDA

SOUTH HANCOCK ROAD

PLAN SHEET
US 27 / SR 25

SHEET NO.



REVISIONS	
DATE	DESCRIPTION

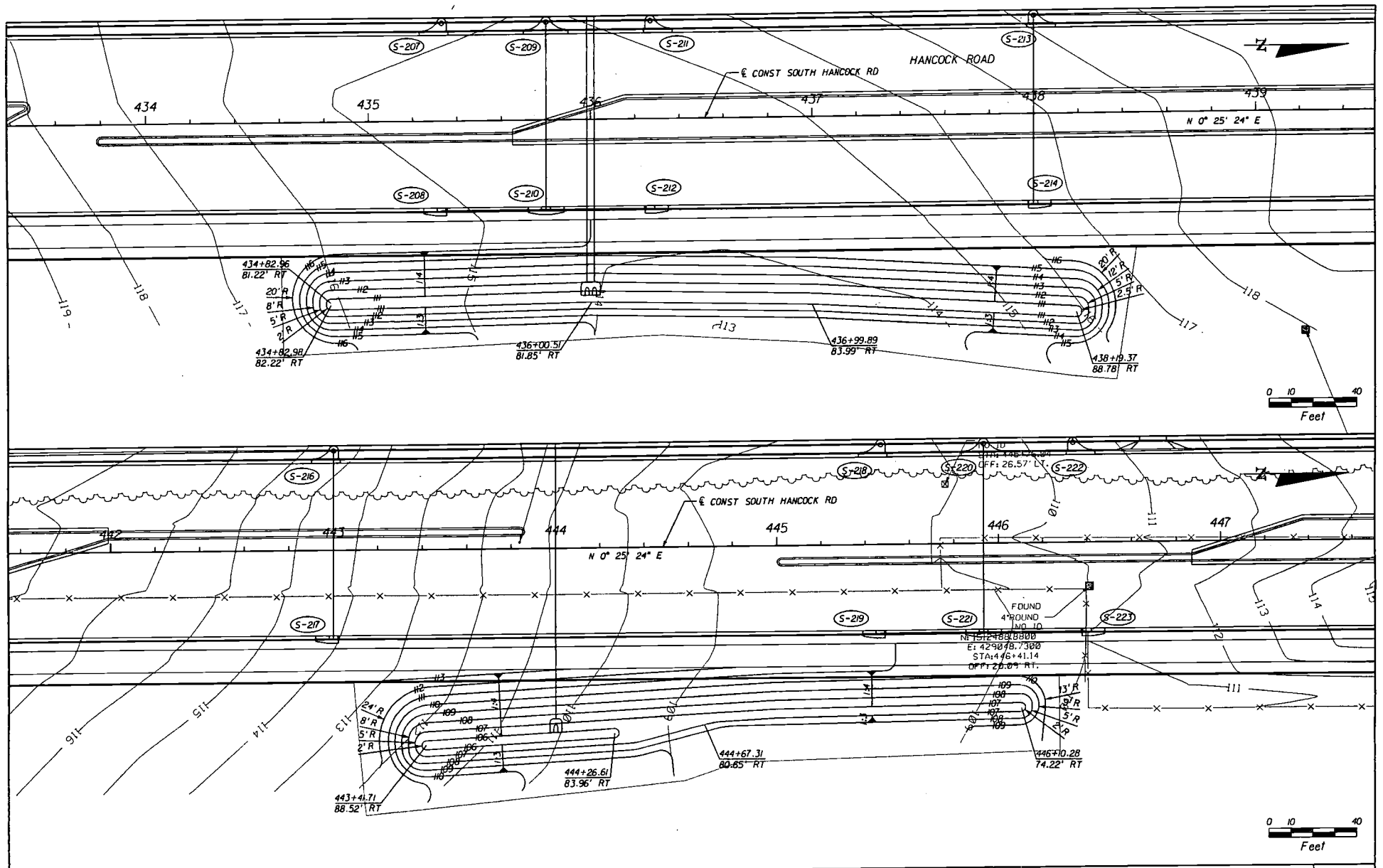
HNTB
 HNTB CORPORATION
 300 PRIMA BLVD.
 SUITE 200
 LAKE WARY, FL 32746
 (407) 805-0155
 CERT. OF AUTH. NO. 6500
 ENGINEER OF RECORD: KAREN M. VAN DER AVONT, P.E.
 FL. REGISTRATION NO. 44794



**SOUTH HANCOCK
ROAD**

**INTERSECTION DETAILS
US 27 / SR 25**

SHEET
NO.



REVISIONS	
DATE	DESCRIPTION

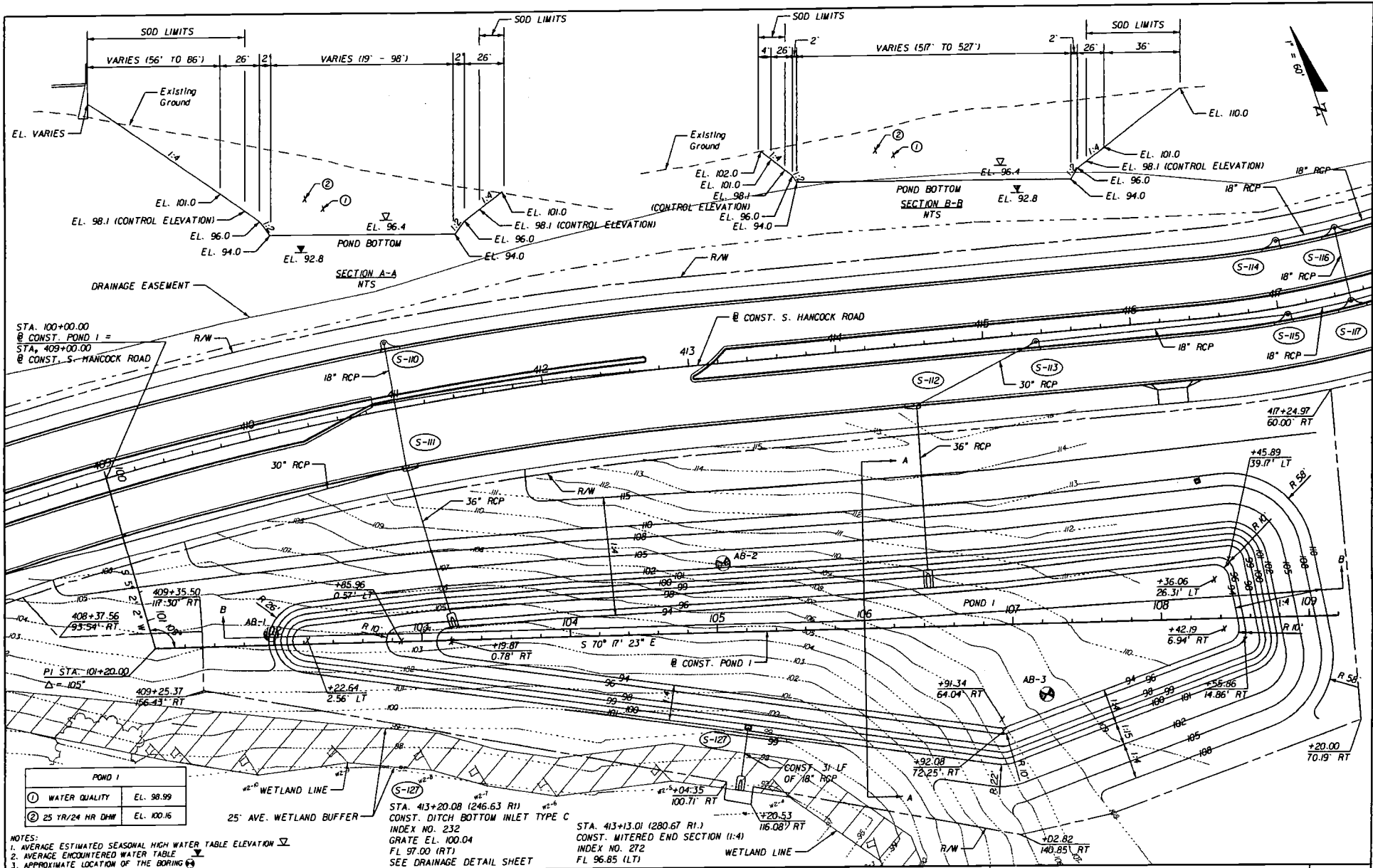
HNTB
 HNTB CORPORATION
 300 PRIMA BLVD,
 SUITE 200
 LAKE WARY, FL 32746
 (407) 805-0355
 CERT. OF AUTH. NO. 6500
 ENGINEER OF RECORD: KAREN M. VAN DEN AVONT, P.E.
 FL. REGISTRATION NO. 44794



SOUTH HANCOCK
 ROAD

SWALE DETAILS

SHEET
 NO.



STA. 100+00.00
 @ CONST. POND 1 =
 STA. 409+00.00
 @ CONST. S. HANCOCK ROAD

POND 1	
① WATER QUALITY	EL. 98.99
② 25 YR/24 HR DWF	EL. 100.16

- NOTES:
 1. AVERAGE ESTIMATED SEASONAL HIGH WATER TABLE ELEVATION ∇
 2. AVERAGE ENCOUNTERED WATER TABLE ∇
 3. APPROXIMATE LOCATION OF THE BORING \odot

REVISIONS		
DATE	BY	DESCRIPTION

HNTB
 HNTB CORPORATION
 300 PRIMAVERA BLVD.
 SUITE 200
 LAKE WORTH, FL 32746
 407/825-0155
 CERT. OF AUTH. NO. 6500

ENGINEER OF RECORD: KAREN M. VAN DEN AVONT, P.E.
 FL. REGISTRATION NO. 44794



SOUTH HANCOCK ROAD

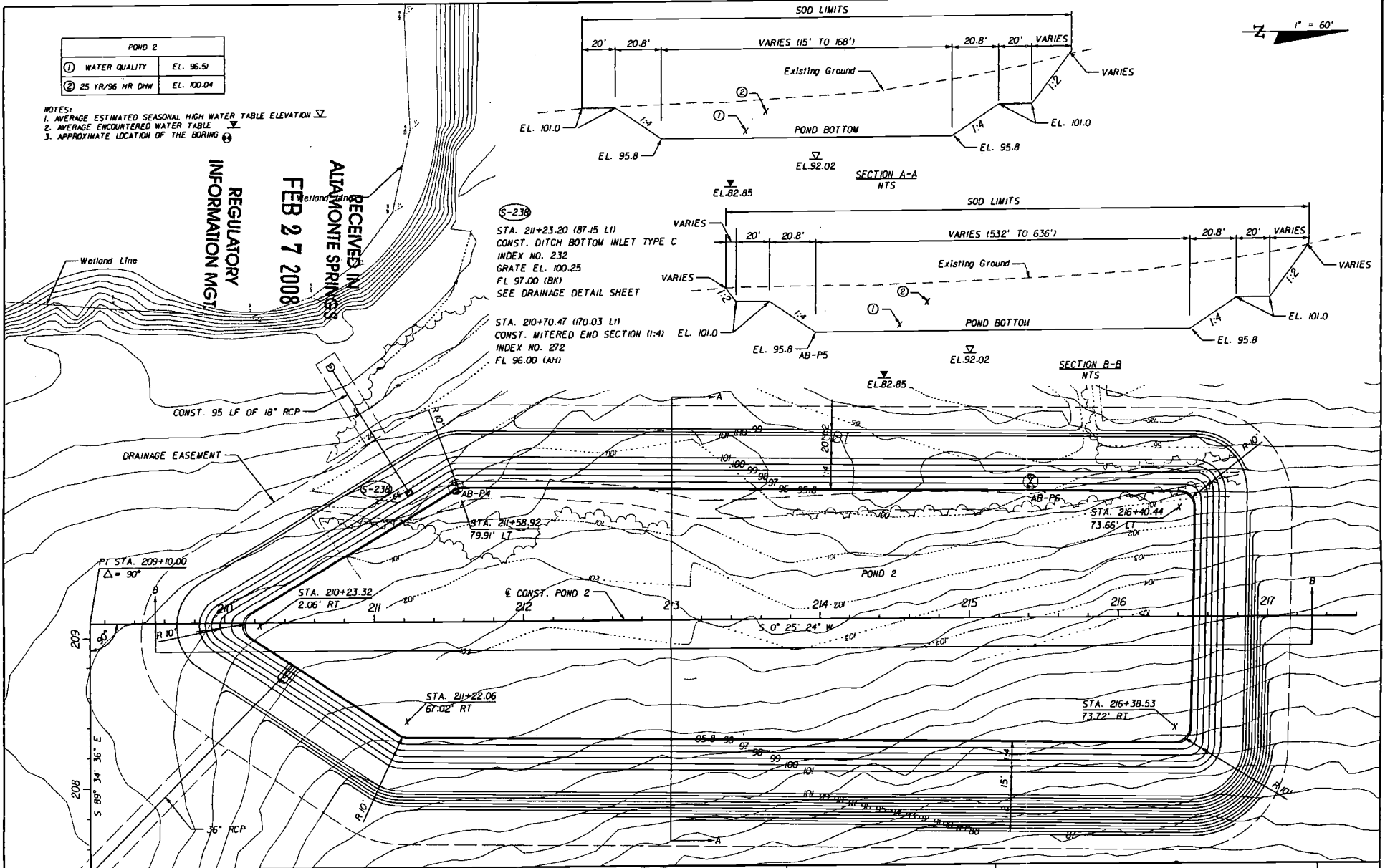
POND DETAIL SHEET
POND 1

SHEET NO.

POND 2	
① WATER QUALITY	EL. 96.51
② 25 YR/96 HR DHW	EL. 100.04

- NOTES:
 1. AVERAGE ESTIMATED SEASONAL HIGH WATER TABLE ELEVATION ∇
 2. AVERAGE ENCOUNTERED WATER TABLE ∇
 3. APPROXIMATE LOCATION OF THE BORING

115324-1



RECEIVED IN
 ALAMONTE SPRINGS
 FEB 27 2008
 REGULATORY
 INFORMATION MGMT

(S-238)
 STA. 211+23.20 (87.15 LI)
 CONST. DITCH BOTTOM INLET TYPE C
 INDEX NO. 232
 GRATE EL. 100.25
 FL 97.00 (BK)
 SEE DRAINAGE DETAIL SHEET

 STA. 210+70.47 (170.03 LI)
 CONST. MITERED END SECTION (1:4)
 INDEX NO. 272
 FL 96.00 (AH)

REVISIONS		
DATE	BY	DESCRIPTION

HNTB
 HNTB CORPORATION
 300 PRINERA BLVD,
 SUITE 200
 LAKE WARD, FL 32746
 (407) 805-0353
 CERT. OF AUTH. NO. 6300
 ENGINEER OF RECORD: KAREN M. VAN DEN AVONT, P.E.
 FL. REGISTRATION NO. 44794

LAKE COUNTY
 FLORIDA

SOUTH HANCOCK
ROAD

POND DETAIL SHEET
POND 2

SHEET
 NO.