

16

①



St. Johns
Misc-4417



Oversized Drawings

1723

68272-13

5-images

IMPROVEMENT PLANS FOR

HANCOCK TOWNE CENTRE - LOT 5

Section 28; Township 22 S; Range 26 E; Lake County
CLERMONT, FLORIDA

NOVEMBER 2006

FINAL PERMITTED
PLANS

DATE 6/23/2007

INITIAL RMP

TABLE OF CONTENTS

SHT. NO.	TITLE
1	COVER SHEET
2-3	GENERAL NOTES & INDEX SHEET
4	MASTER SITE PLAN
5	AERIAL OVERLAY
6	GEOMETRY PLAN
7	PRE-DEVELOPMENT PLAN
8	GRADING PLAN
9	DRAINAGE PLAN
10	OFFSITE DRAINAGE PLAN
11	UTILITY PLAN
12	CROSS SECTIONS
13	MISC. DETAILS
14	STRIPING/SIGNAGE PLAN
15	PAVING & DRAINAGE DETAILS
16	CLERMONT SANITARY DETAILS
17	CLERMONT WATER DETAILS

ADDITIONAL DRAWINGS

LA-1 - LA-2	LANDSCAPE PLANS
IR-1 - IR-2	IRRIGATION PLANS

OWNER/DEVELOPER

WOODY & WALLACE LAND
DEVELOPMENT, LLC.

11740 OSPREY BOULEVARD
CLERMONT, FLORIDA 34711
(407) 592-6888

PLANNERS/ENGINEERS

McCOY & ASSOCIATES

606 SOUTH MAIN AVENUE
MINNEOLA, FLORIDA 34715
(352) 394-5756

SURVEYOR

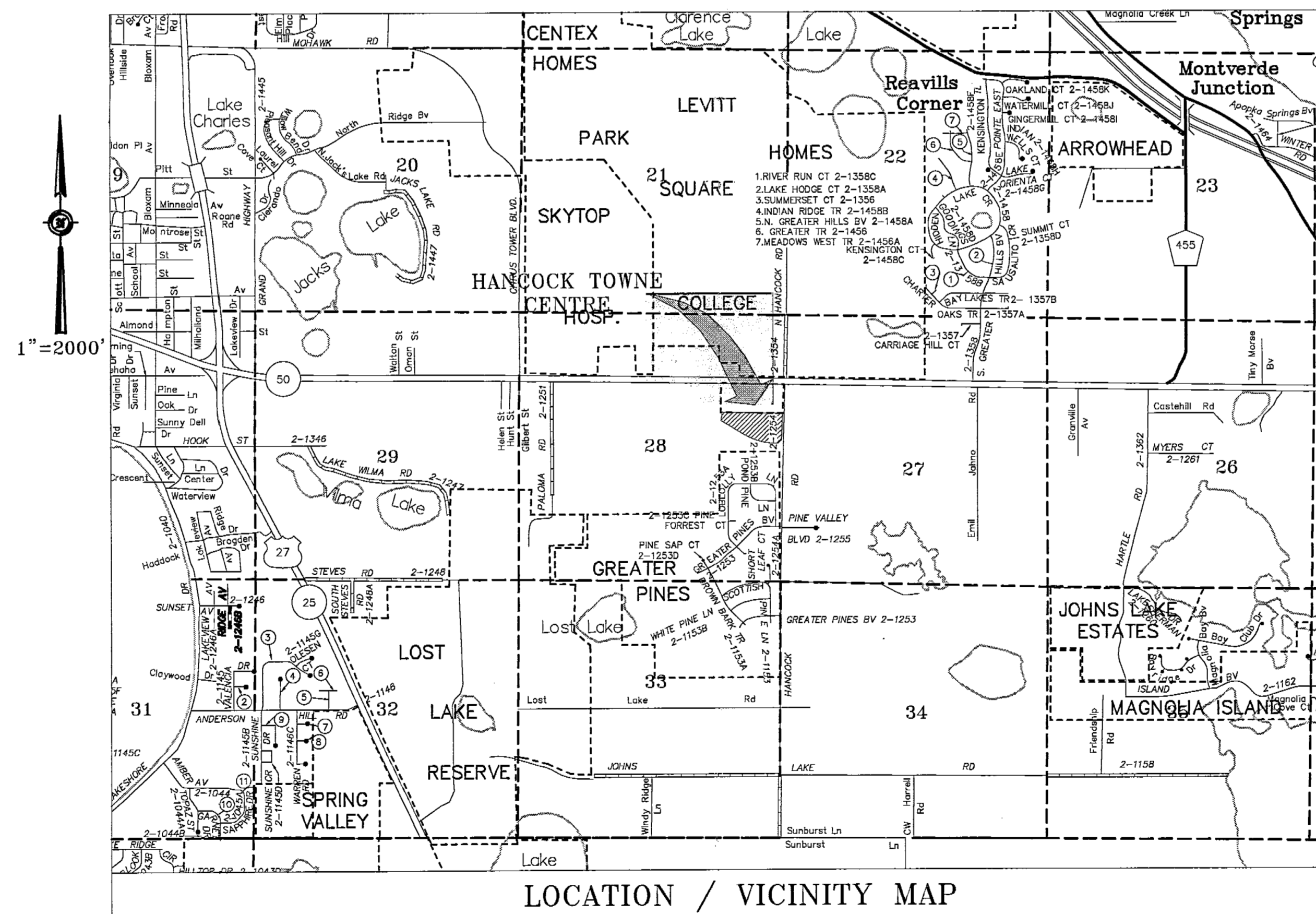
FLORIDA GEODETIC, LLC.

737 WEST MONTROSE STREET
CLERMONT, FLORIDA 34711
(352) 394-3000

LANDSCAPE

FLORIDA LANDSCAPE SERVICES, INC

6386 BETH ROAD
ORLANDO, FLORIDA 32824
(407) 859-1033



LOCATION / VICINITY MAP

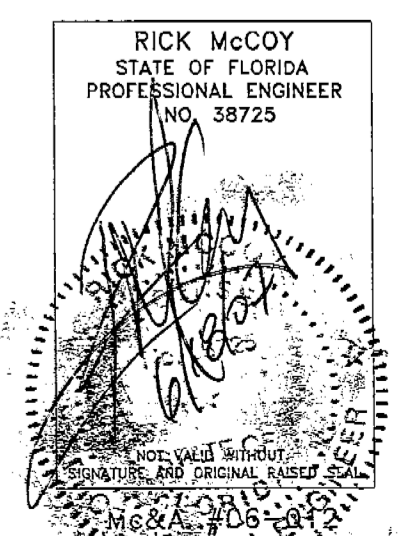
NOTE: ALL PROJECT CONSTRUCTION SHALL CONFORM TO THE CURRENT CLERMONT STANDARDS AND SPECIFICATIONS.
ALL CONSTRUCTION IN THE F.D.O.T. ROW SHALL CONFORM TO THE CURRENT EDITION AND UPDATES OF THE DESIGN STANDARDS MANUAL.

68272-13X

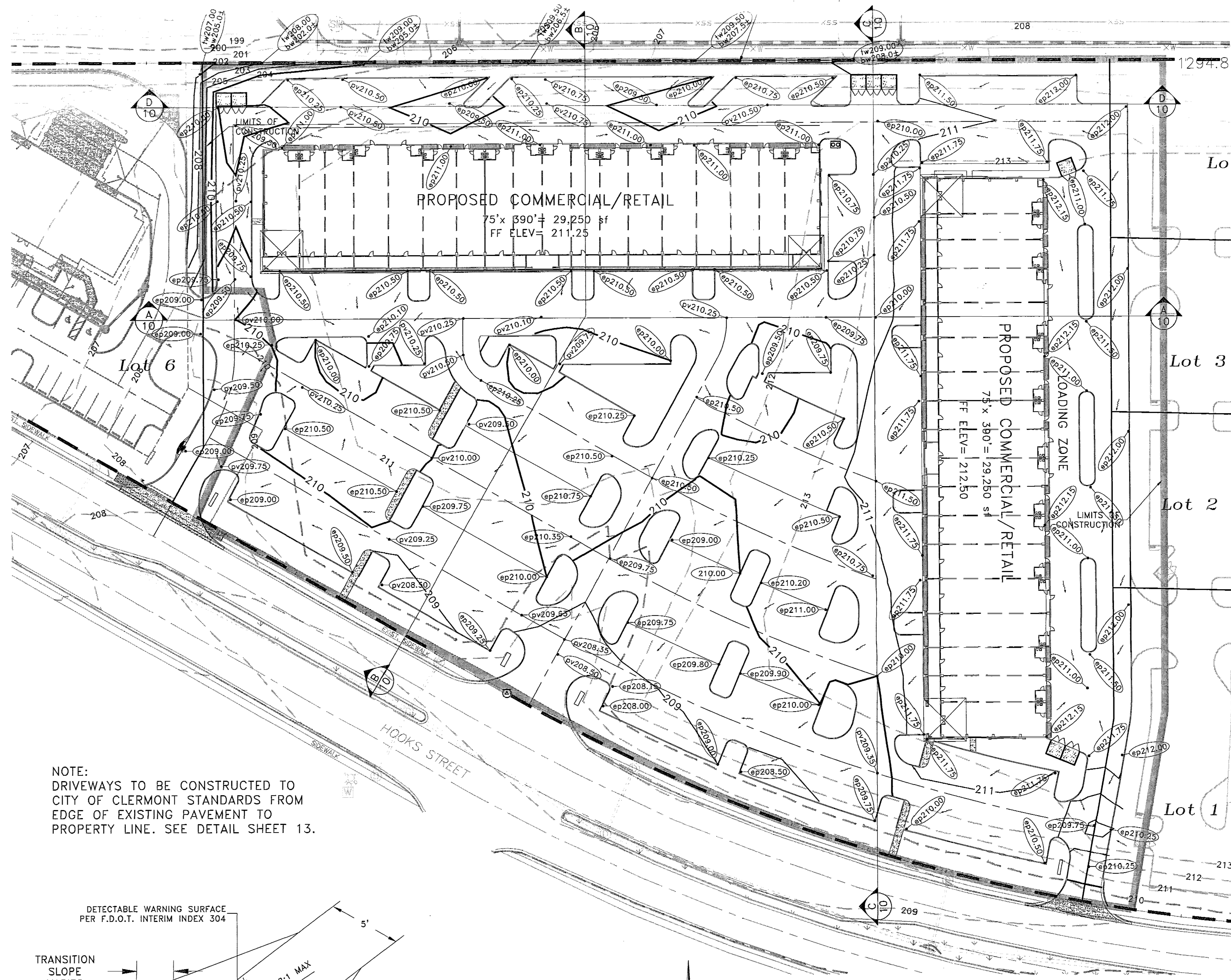
RECEIVED

JUN 19 2007

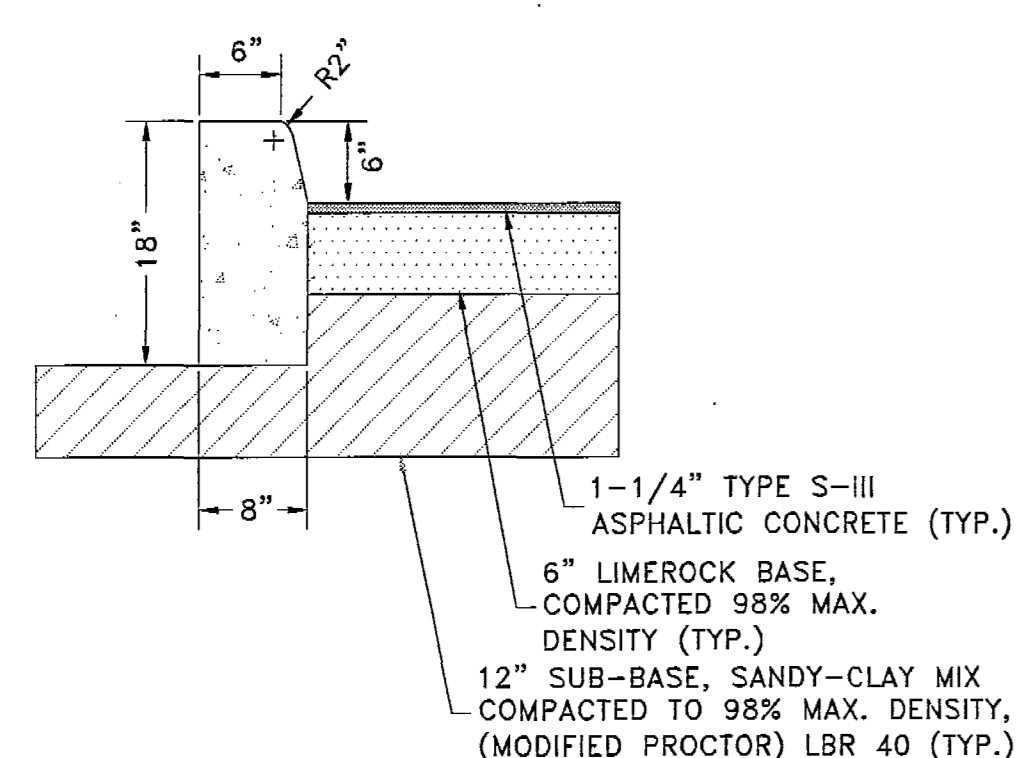
PDS
ALTAMONTE SVC. CTR.



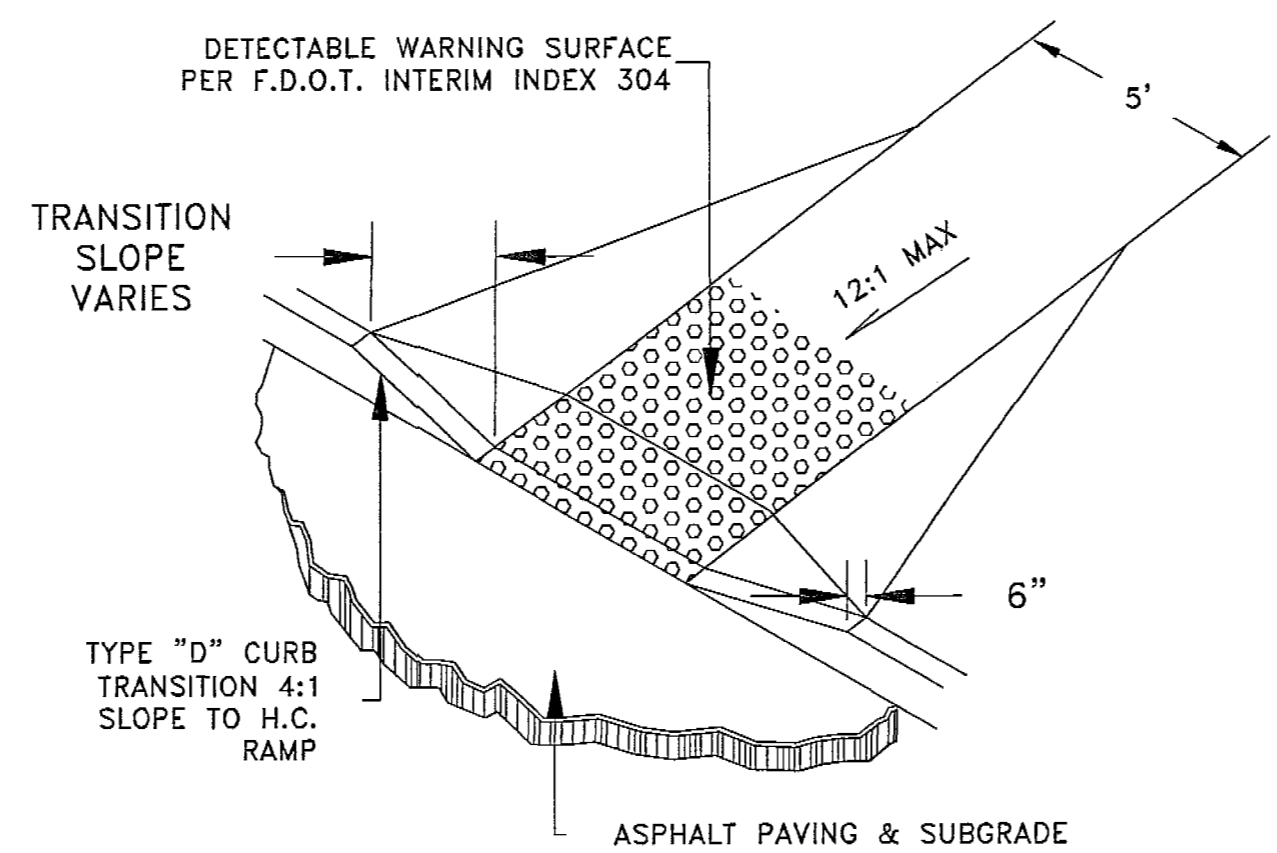
THE ENGINEER EXPRESSLY RESERVES THE EXCLUSIVE COMMON-LAW COPYRIGHT AND PROPERTY RIGHTS TO THESE DRAWINGS WHICH MAY NOT BE REPRODUCED, CHANGED OR COPIED IN ANY FORM OR MANNER, NOR ARE THEY TO BE ASSIGNED TO ANY PARTY WITHOUT THE ENGINEER'S WRITTEN CONSENT.



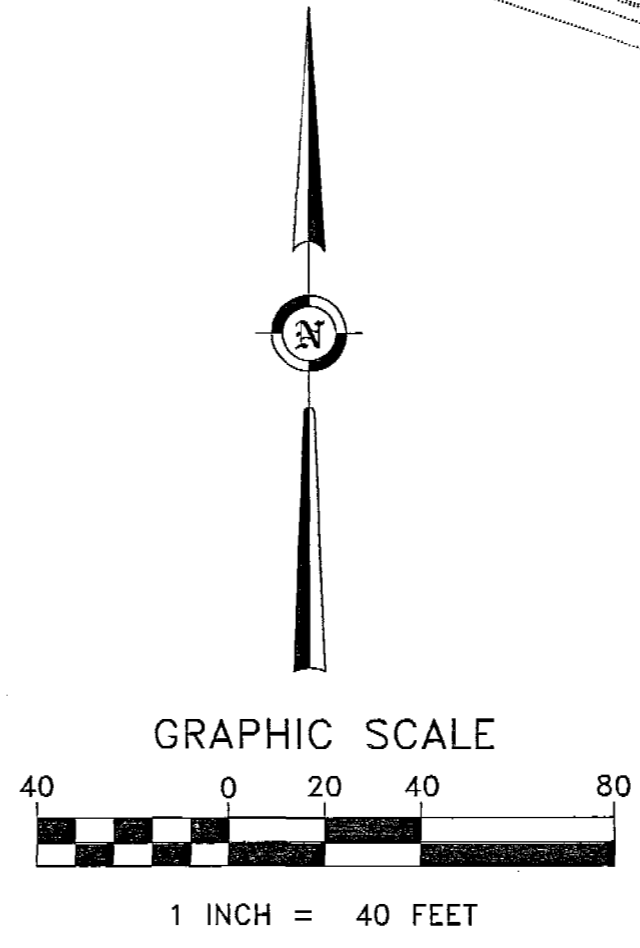
NOTE:
DRIVEWAYS TO BE CONSTRUCTED TO CITY OF CLERMONT STANDARDS FROM EDGE OF EXISTING PAVEMENT TO PROPERTY LINE. SEE DETAIL SHEET 13.



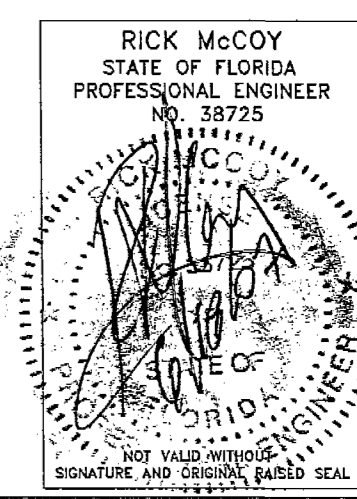
HEADER CURB/ASPHALT PAVING DETAIL
N.T.S.



FLARED SIDE PEDESTRIAN RAMP
N.T.S.



Stormwater discharge permitted by Lake County School Board. SJRWMD Permit No. 4-069-68272-3, High School AAA, Condition no. 25.



JOB NO.	06-012
DATE	NOV. 2006
DES. BY:	RMc/ES
DWN. BY:	ES
CHK'D BY:	RMc
APP'D BY:	RMc
SHEET	8 OF 17

GRADING PLAN

Lot 5 - Hancock Towne Centre
Sec. 26; Twp. 25S; Rge. 26E, City of Clermont, Lake County, FL
OWNER/DEVELOPER
Woody & Wallace Land Development, LLC
11740 Osprey Pointe Boulevard, Clermont, FL 34711

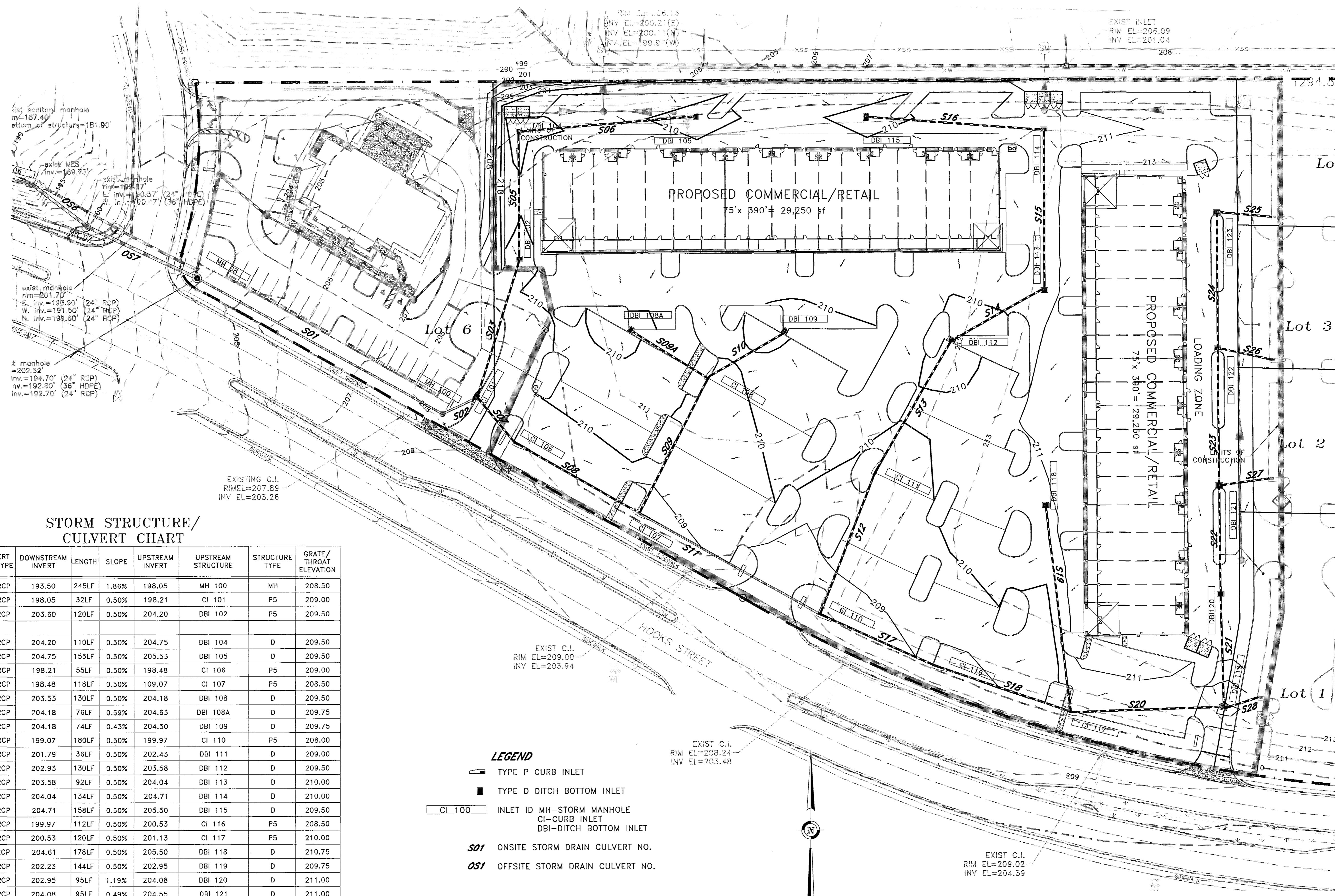
Florida Geodetic, LLC
737 West Montrose Street
Clermont, FL 34711
(952) 394-3000
Fax (952) 394-1305

McCoy & Associates
ENGINEERS & LAND PLANNERS
606 SOUTH MAIN AVE. MINNEOLA, FL 34715
(352) 384-5766 FAX (352) 384-5768
CA# 8374

NO.	DATE	DESCRIPTION
1	03/12/07	Rev per City comments
2	05/29/07	Rev per SJRWMD

REVISIONS

THE ENGINEER EXPRESSLY RESERVES THE EXCLUSIVE COMMON-LAW COPYRIGHT AND PROPERTY RIGHTS TO THESE DRAWINGS WHICH MAY NOT BE REPRODUCED, CHANGED OR COPIED IN ANY FORM OR MANNER, NOR ARE THEY TO BE ASSIGNED TO ANY PARTY WITHOUT THE ENGINEER'S WRITTEN CONSENT.

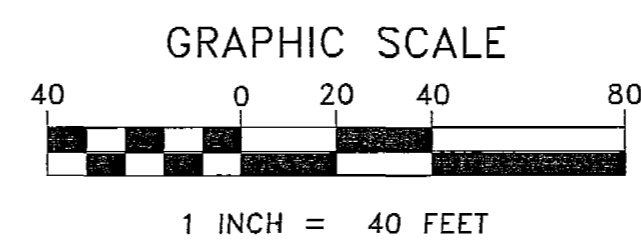


**STORM STRUCTURE/
CULVERT CHART**

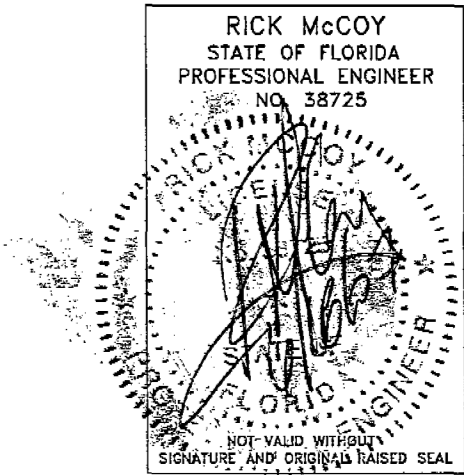
LINE NO.	DOWNSTREAM STRUCTURE	CULVERT SIZE/TYPE	DOWNSTREAM INVERT	LENGTH	SLOPE	UPSTREAM INVERT	UPSTREAM STRUCTURE	STRUCTURE TYPE	GRATE/THROAT ELEVATION
S01	MH 08	36"/RCP	193.50	245LF	1.86%	198.05	MH 100	MH	208.50
S02	MH 100	36"/RCP	198.05	32LF	0.50%	198.21	CI 101	P5	209.00
S03	CI 101	18"/RCP	203.60	120LF	0.50%	204.20	DBI 102	P5	209.50
S04	N/A								
S05	DBI 102	18"/RCP	204.20	110LF	0.50%	204.75	DBI 104	D	209.50
S06	DBI 104	18"/RCP	204.75	155LF	0.50%	205.53	DBI 105	D	209.50
S07	CI 101	36"/RCP	198.21	55LF	0.50%	198.48	CI 106	P5	209.00
S08	CI 106	36"/RCP	198.48	118LF	0.50%	109.07	CI 107	P5	208.50
S09	CI 107	18"/RCP	203.53	130LF	0.50%	204.18	DBI 108	D	209.50
S09A	CI 108	18"/RCP	204.18	76LF	0.59%	204.63	DBI 108A	D	209.75
S10	DBI 108	18"/RCP	204.18	74LF	0.43%	204.50	DBI 109	D	209.75
S11	CI 107	36"/RCP	199.07	180LF	0.50%	199.97	CI 110	P5	208.00
S12	CI 110	24"/RCP	201.79	36LF	0.50%	202.43	DBI 111	D	209.00
S13	DBI 111	18"/RCP	202.93	130LF	0.50%	203.58	DBI 112	D	209.50
S14	DBI 112	18"/RCP	203.58	92LF	0.50%	204.04	DBI 113	D	210.00
S15	DBI 113	18"/RCP	204.04	134LF	0.50%	204.71	DBI 114	D	210.00
S16	DBI 114	18"/RCP	204.71	158LF	0.50%	205.50	DBI 115	D	209.50
S17	CI 110	36"/RCP	199.97	112LF	0.50%	200.53	CI 116	P5	208.50
S18	CI 116	36"/RCP	200.53	120LF	0.50%	201.13	CI 117	P5	210.00
S19	CI 117	18"/RCP	204.61	178LF	0.50%	205.50	DBI 118	D	210.75
S20	CI 117	24"/RCP	202.23	144LF	0.50%	202.95	DBI 119	D	209.75
S21	DBI 119	24"/RCP	202.95	95LF	1.19%	204.08	DBI 120	D	211.00
S22	DBI 120	24"/RCP	204.08	95LF	0.49%	204.55	DBI 121	D	211.00
S23	DBI 121	24"/RCP	204.55	120LF	0.50%	205.15	DBI 122	P5	211.00
S24	DBI 122	24"/RCP	205.15	120LF	0.50%	205.75	DBI 123	D	211.00
S25	DBI 123	18"/RCP	206.50	48LF	0.50%	207.25	STUB-OUT	PLUG	N/A
S26	DBI 122	18"/RCP	206.50	46LF	1.63%	207.25	STUB-OUT	PLUG	N/A
S27	DBI 121	18"/RCP	206.50	38LF	1.97%	207.25	STUB-OUT	PLUG	N/A
S28	DBI 119	24"/RCP	202.95	30LF	0.47%	203.09	STUB-OUT	PLUG	N/A

LEGEND

- TYPE P CURB INLET
- TYPE D DITCH BOTTOM INLET
- INLET ID MH-STORM MANHOLE
CI-CURB INLET
DBI-DITCH BOTTOM INLET
- S01** ONSITE STORM DRAIN CULVERT NO.
- OS1** OFFSITE STORM DRAIN CULVERT NO.

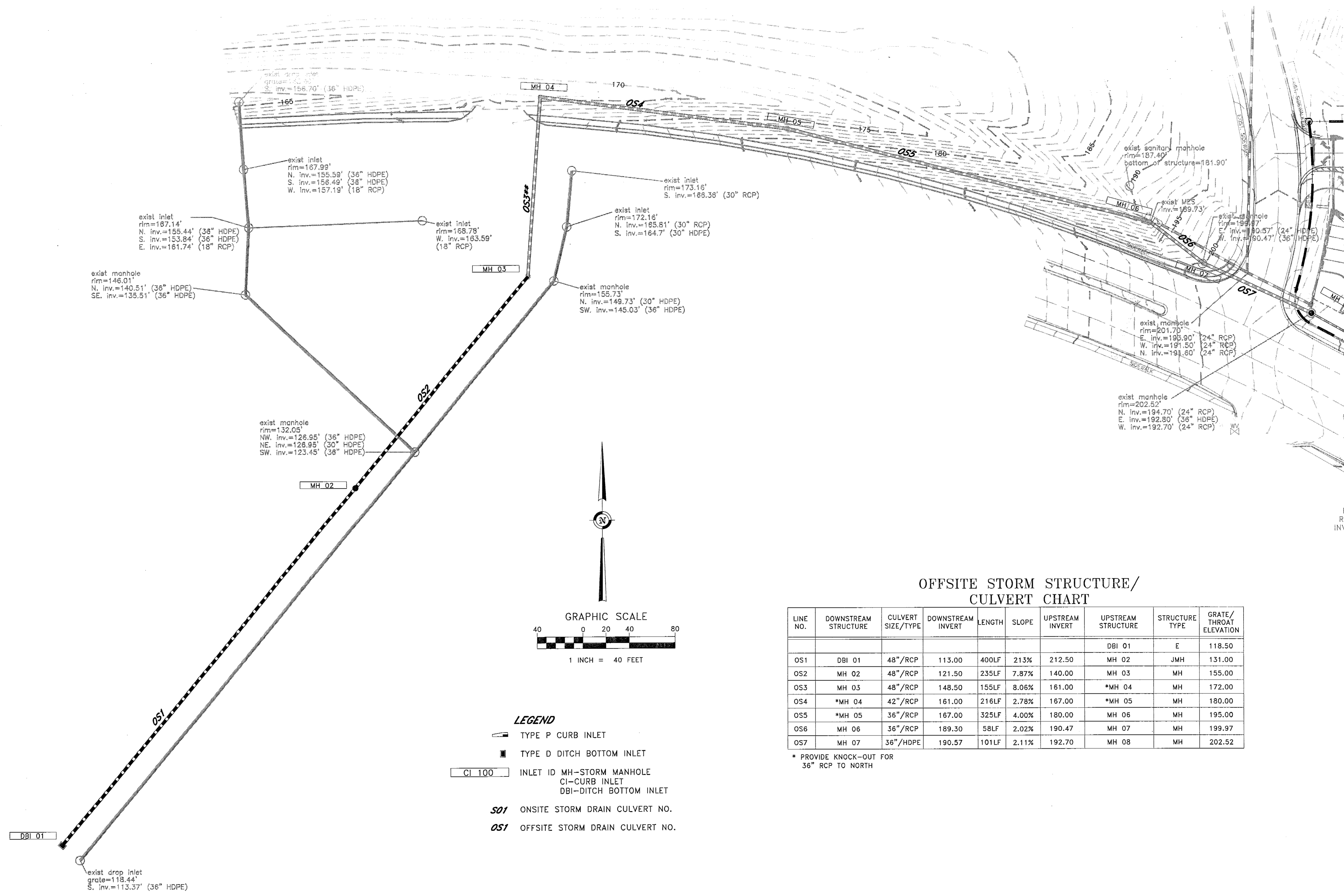


NOTES:
1. ALL ON AND OFF-SITE DRAINAGE INFRASTRUCTURE CONSTRUCTED TO SERVE THIS PROJECT IS TO BE PRIVATELY OWNED AND MAINTAINED.



<p>Florida Geodetic, LLC 787 West Montrose Street Clermont, FL 34711 (352) 394-8000 Fax (352) 394-1305</p>	<p>McCOY & ASSOCIATES ENGINEERS & LAND PLANNERS 608 SOUTH MAIN AVE. MINNEOLA, FL 34715 (852) 384-5756 FAX (352) 384-5758 CA# 8374</p>
<p>Lot 5 - Hancock Towne Centre Sec. 28, Twp. 28S, Rge. 28E, City of Clermont, Lake County, FL OWNER/DEVELOPER Woody & Wallace Land Development, LLC 11740 Casprey Pointe Boulevard, Clermont, FL 34711</p>	
<p>DRAINAGE PLAN</p>	
<p>JOB NO. 06-012 DATE MAY 2006 DES. BY: RME/ES DWN. BY: ES CHK'D BY: RME APP'D BY: RME</p>	
<p>SHEET 9 OF 17</p>	

THE ENGINEER EXPRESSLY RESERVES THE EXCLUSIVE COMMON LAW COPYRIGHT AND PROPERTY RIGHTS TO THESE DRAWINGS WHICH MAY NOT BE REPRODUCED, CHANGED OR COPIED IN ANY FORM OR MANNER, NOR ARE THEY TO BE ASSIGNED TO ANY PARTY WITHOUT THE ENGINEERS WRITTEN CONSENT.



OFFSITE STORM STRUCTURE/
CULVERT CHART

LINE NO.	DOWNSTREAM STRUCTURE	CULVERT SIZE/TYPE	DOWNSTREAM INVERT	LENGTH	SLOPE	UPSTREAM INVERT	UPSTREAM STRUCTURE	STRUCTURE TYPE	GRATE/THROAT ELEVATION
							DBI 01	E	118.50
OS1	DBI 01	48"/RCP	113.00	400LF	2.13%	212.50	MH 02	JMH	131.00
OS2	MH 02	48"/RCP	121.50	235LF	7.87%	140.00	MH 03	MH	155.00
OS3	MH 03	48"/RCP	148.50	155LF	8.06%	161.00	*MH 04	MH	172.00
OS4	*MH 04	42"/RCP	161.00	216LF	2.78%	167.00	*MH 05	MH	180.00
OS5	*MH 05	36"/RCP	167.00	325LF	4.00%	180.00	MH 06	MH	195.00
OS6	MH 06	36"/RCP	189.30	58LF	2.02%	190.47	MH 07	MH	199.97
OS7	MH 07	36"/HDPE	190.57	101LF	2.11%	192.70	MH 08	MH	202.52

* PROVIDE KNOCK-OUT FOR
36" RCP TO NORTH

LEGEND

- TYPE P CURB INLET
- TYPE D DITCH BOTTOM INLET
- INLET ID MH-STORM MANHOLE
CI-CURB INLET
DBI-DITCH BOTTOM INLET
- SO1** ONSITE STORM DRAIN CULVERT NO.
- OS1** OFFSITE STORM DRAIN CULVERT NO.

NO.	DATE	DESCRIPTION
1	03/17/07	Rev per City comments

Florida Geodetic, LLC
737 West Montrose Street
Clermont, FL 34711
(352) 394-3000
Fax (352) 394-1305

McCoy & Associates
ENGINEERS & LAND PLANNERS
606 SOUTH MAIN AVE. MINNEOLA, FL 34715
(352) 394-5756
Clermont, FL 34711

OFFSITE DRAINAGE PLAN
Lot 5 - Hancock Towne Centre
Sec. 28; Twp. 22S; Rge 28E, City of Clermont, Lake County, FL
OWNER/DEVELOPER
Woody & Walter Land Development, LLC
11740 Osprey Pointe Boulevard, Clermont, FL, 34711

88272-13

RECEIVED
JUN 19 2007
PDS
ALTAMONTE SVC. CTR.

RICK MCCOY
STATE OF FLORIDA
PROFESSIONAL ENGINEER
No. 38725

JOB NO. 06-012
DATE MAY 2006
DES. BY: RMC/ES
DWN. BY: ES
CHK'D BY: RMC
APP'D BY: RMC
SHEET 10 OF 17