

NOTE:
 DO NOT USE THE INFORMATION ON THIS SHEET FOR CONSTRUCTION PURPOSES. THIS SHEET IS IN THE PLANS FOR DOCUMENTATION AND TO ASSIST CONSTRUCTION PERSONNEL WITH DRAINAGE CONCERNS

REVISIONS	DATE

TYLIN INTERNATIONAL
 225 E. ROBINSON STREET, SUITE 490
 ORLANDO, FLORIDA 32801
 P 407.563.7101 F 407.999.5228
 CERTIFICATE OF AUTHORIZATION 00002017

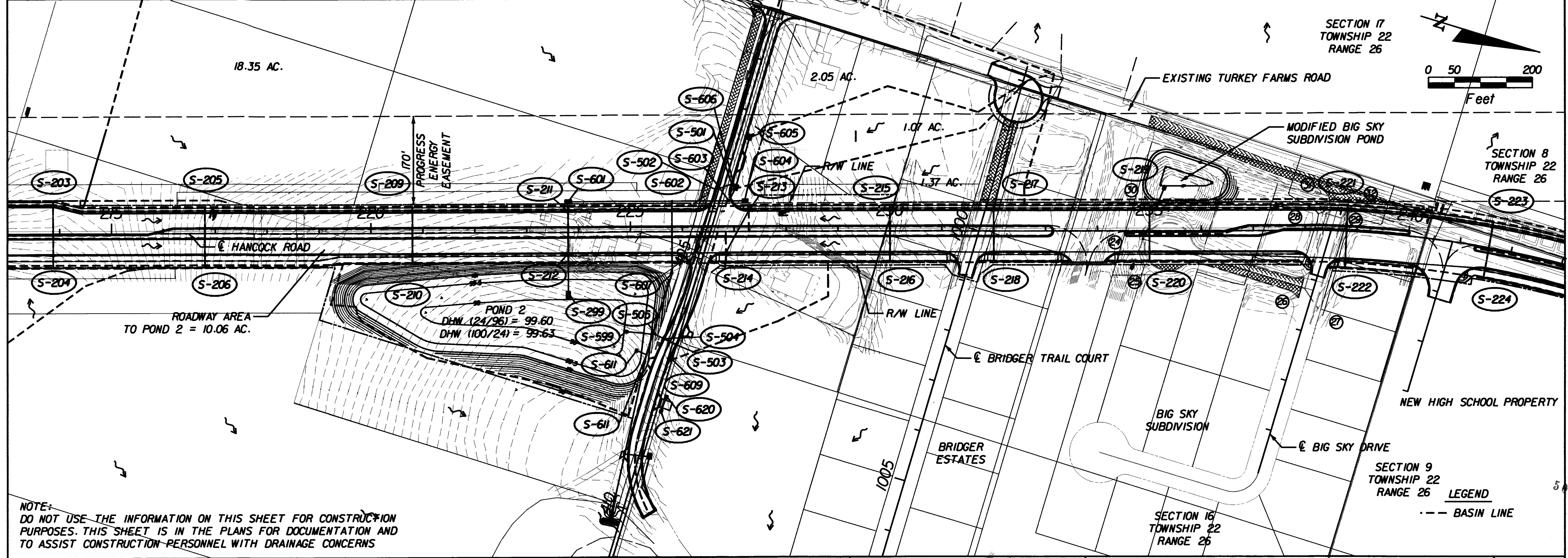
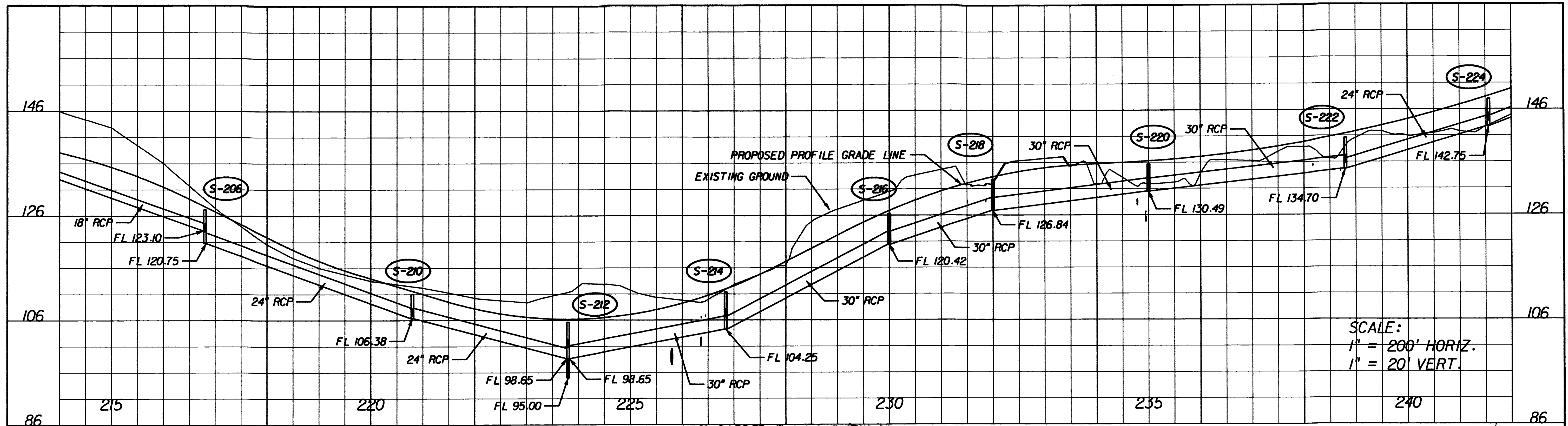


LAKE COUNTY
 DEPARTMENT OF PUBLIC WORKS
 ENGINEERING DIVISION
 123 N. SINCLAIR AVENUE
 TAVARES, FLORIDA 32778

Dino E. Lucarelli
 SIGNATURE
 DATE 5/25/11
 DINO E. LUCARELLI, P.E. NO: 39556

DRAINAGE MAP

SHEET NO.
 2



NOTE: DO NOT USE THE INFORMATION ON THIS SHEET FOR CONSTRUCTION PURPOSES. THIS SHEET IS IN THE PLANS FOR DOCUMENTATION AND TO ASSIST CONSTRUCTION PERSONNEL WITH DRAINAGE CONCERNS

REVISIONS	DATE

TYLIN INTERNATIONAL
 225 E. ROBINSON STREET, SUITE 490
 ORLANDO, FLORIDA 32801
 P. 407.563.7101 F. 407.999.5228
 CERTIFICATE OF AUTHORIZATION 00002317

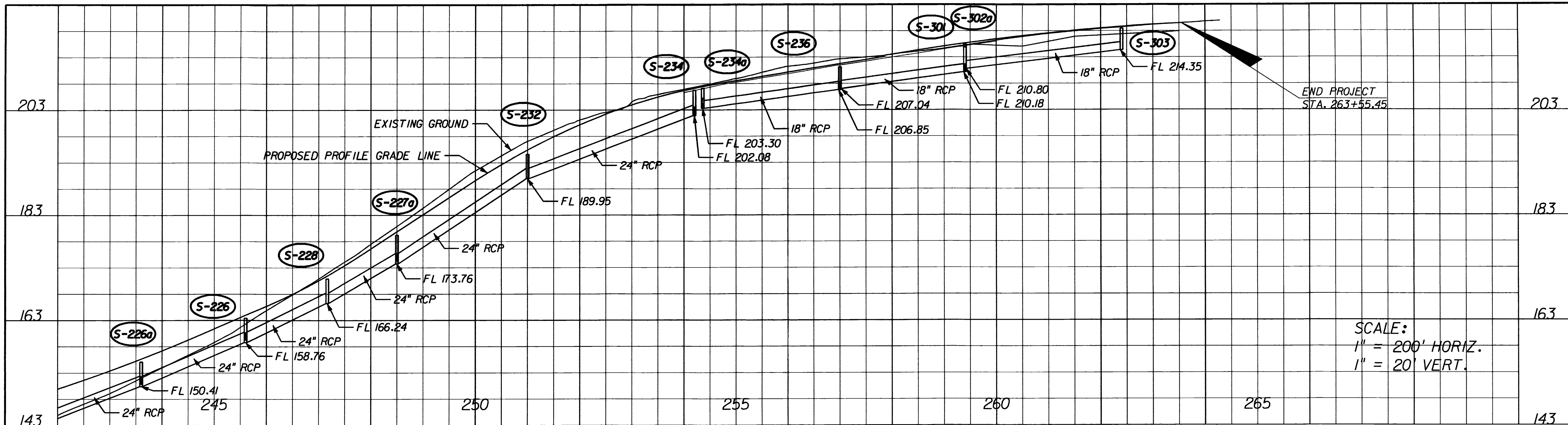


LAKE COUNTY
 DEPARTMENT OF PUBLIC WORKS
 ENGINEERING DIVISION
 123 N. SINCLAIR AVENUE
 TAVARES, FLORIDA 32778

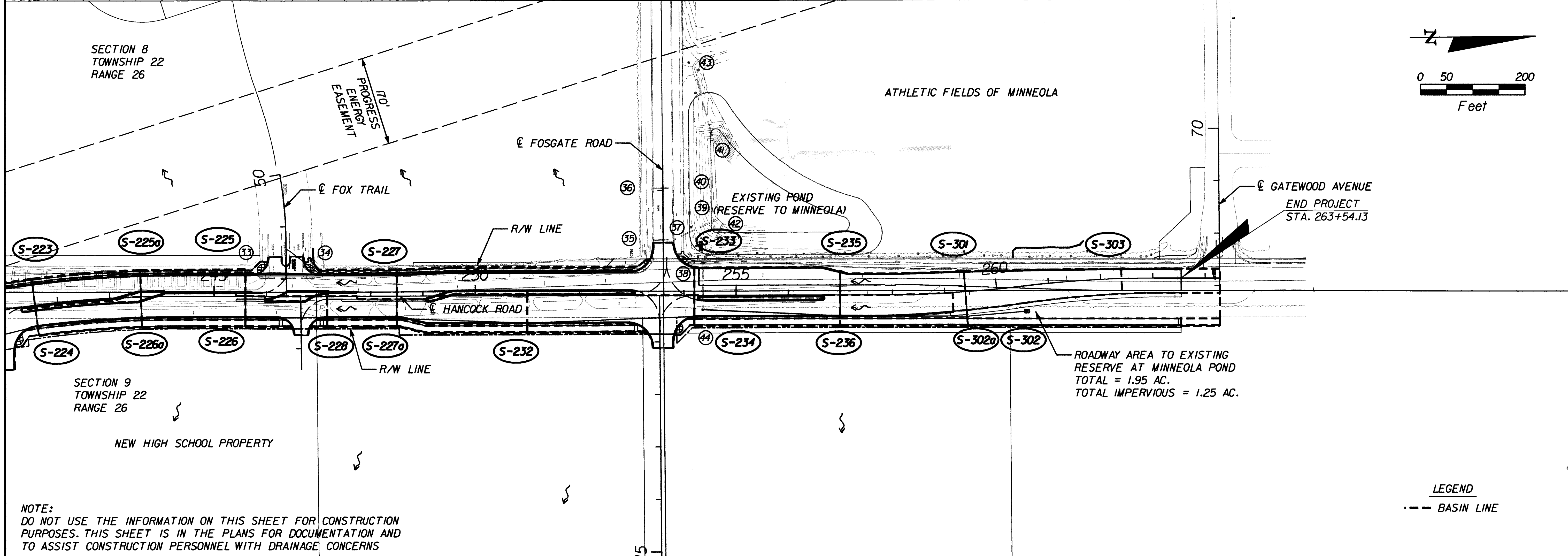
Dino E. Lucarelli
 SIGNATURE
 DATE 5/24/11
 DINO E. LUCARELLI, P.E. NO. 39556

DRAINAGE MAP

SHEET NO.
 3



SCALE:
 1" = 200' HORIZ.
 1" = 20' VERT.



REVISIONS	DATE

TYLIN INTERNATIONAL
 225 E. ROBINSON STREET, SUITE 490
 ORLANDO, FLORIDA 32801
 P 407.563.7101 F 407.999.5228
 CERTIFICATE OF AUTHORIZATION 00002017

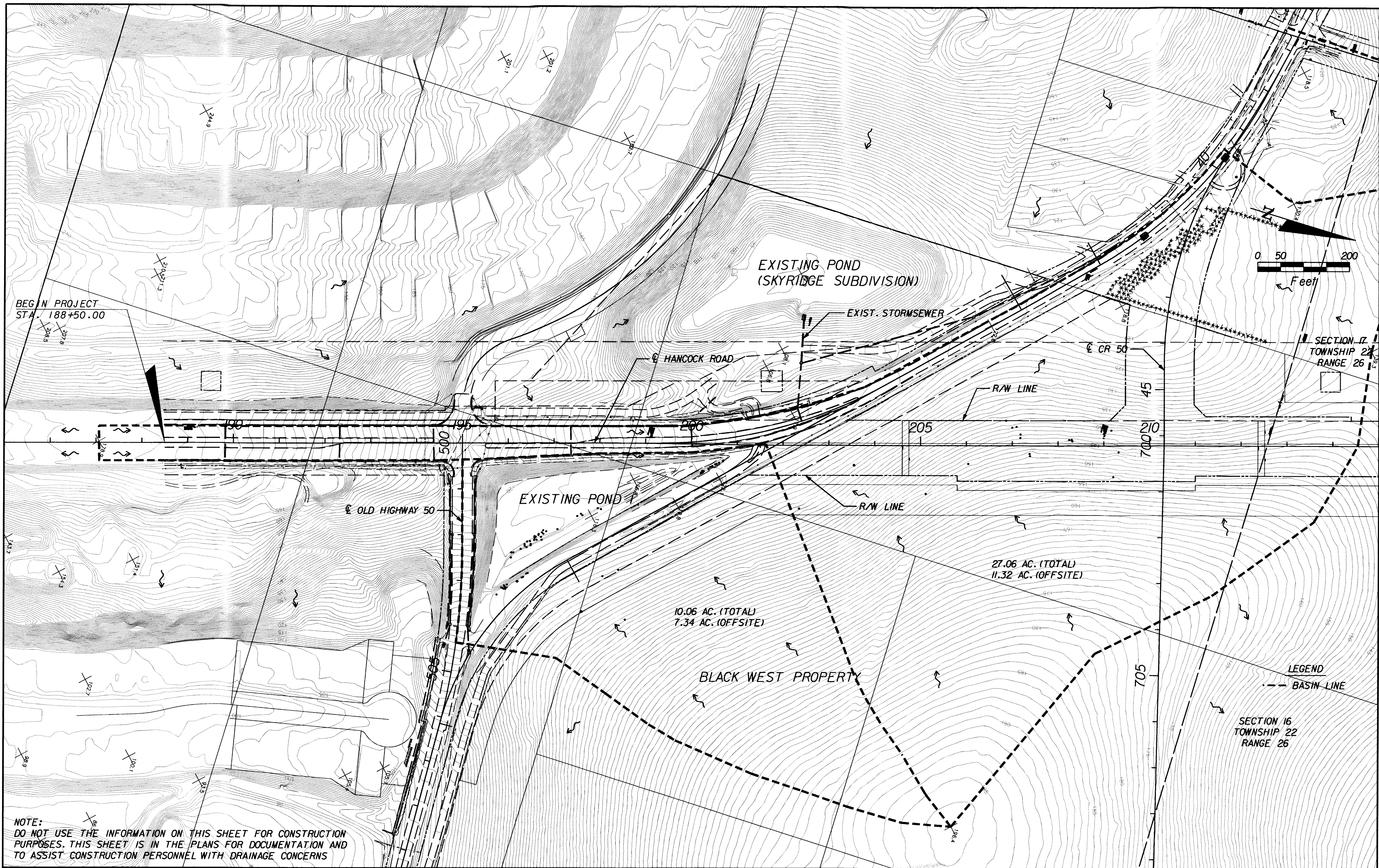


LAKE COUNTY
 DEPARTMENT OF PUBLIC WORKS
 ENGINEERING DIVISION
 123 N. SINCLAIR AVENUE
 TAVARES, FLORIDA 32778

Dino E. Lucarelli
 SIGNATURE
 DATE: 5/24/11
 DINO E. LUCARELLI, P.E. NO. 39556

DRAINAGE MAP

SHEET NO.
 4



NOTE:
DO NOT USE THE INFORMATION ON THIS SHEET FOR CONSTRUCTION PURPOSES. THIS SHEET IS IN THE PLANS FOR DOCUMENTATION AND TO ASSIST CONSTRUCTION PERSONNEL WITH DRAINAGE CONCERNS

REVISIONS	DATE

TYLIN INTERNATIONAL
225 E. ROBINSON STREET, SUITE 490
ORLANDO, FLORIDA 32801
P 407.563.7101 F 407.999.5228
CERTIFICATE OF AUTHORIZATION 00002017

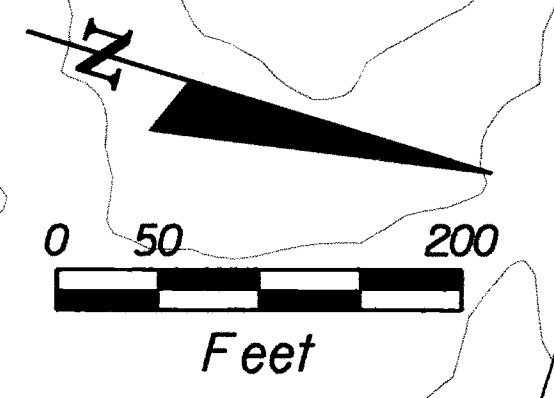
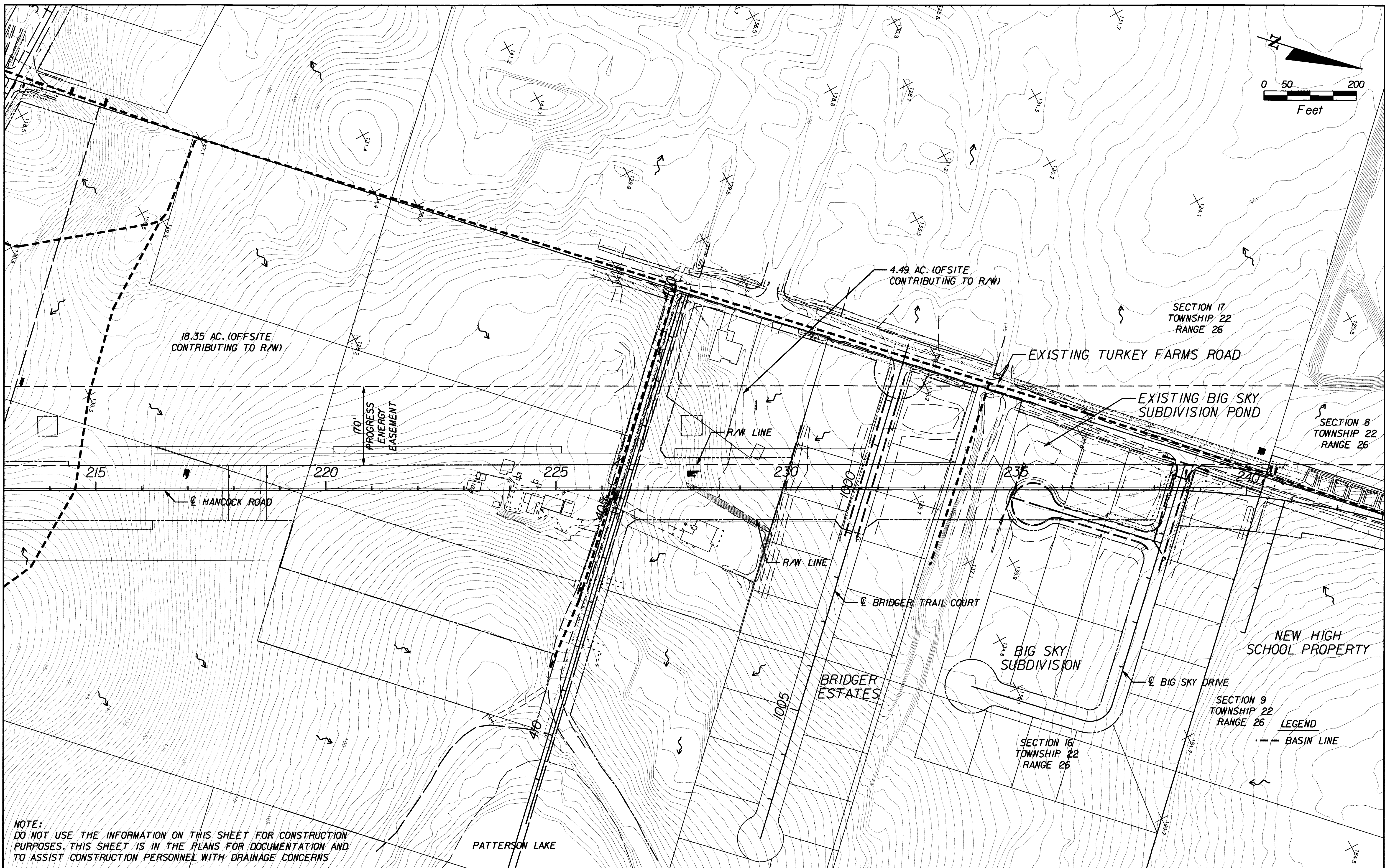


LAKE COUNTY
DEPARTMENT OF PUBLIC WORKS
ENGINEERING DIVISION
123 N. SINCLAIR AVENUE
TAVARES, FLORIDA 32778

Dino E. Lucarelli
SIGNATURE
DATE: 5/23/11
DINO E. LUCARELLI, P.E. NO. 39556

**PRE-DEVELOPMENT
DRAINAGE MAP**

SHEET NO.
EX-1



NOTE:
DO NOT USE THE INFORMATION ON THIS SHEET FOR CONSTRUCTION PURPOSES. THIS SHEET IS IN THE PLANS FOR DOCUMENTATION AND TO ASSIST CONSTRUCTION PERSONNEL WITH DRAINAGE CONCERNS

REVISIONS	DATE

TYLIN INTERNATIONAL
225 E. ROBINSON STREET, SUITE 490
ORLANDO, FLORIDA 32801
P 407.563.7101 F 407.999.5228
CERTIFICATE OF AUTHORIZATION 00002017



LAKE COUNTY
DEPARTMENT OF PUBLIC WORKS
ENGINEERING DIVISION
123 N. SINCLAIR AVENUE
TAVARES, FLORIDA 32778

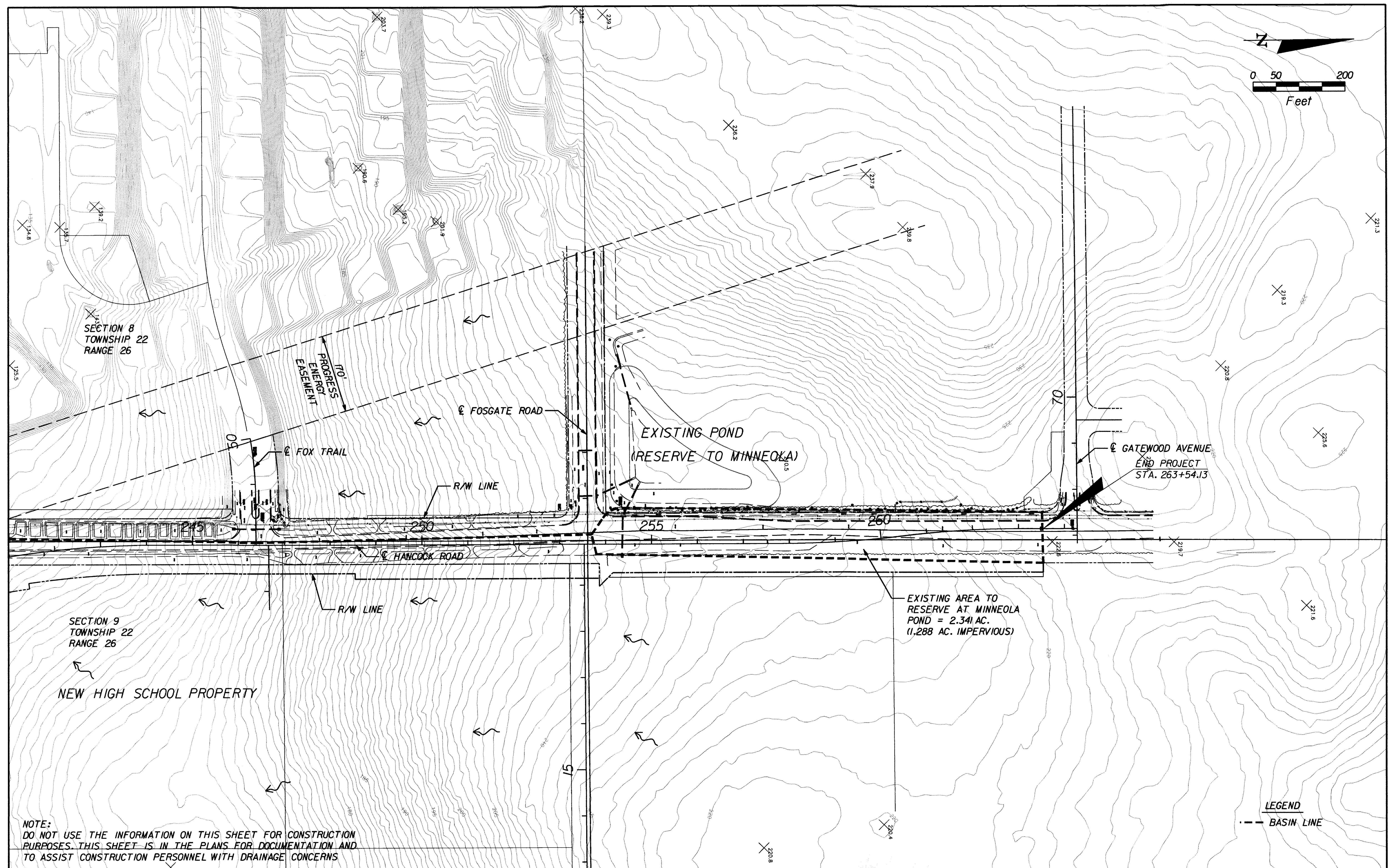
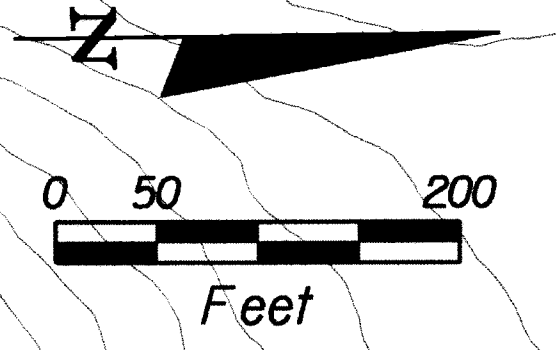
Dino E. Lucarelli
SIGNATURE
DATE 5/24/11
DINO E. LUCARELLI, P.E., NO. 39556

**PRE-DEVELOPMENT
DRAINAGE MAP**

SHEET NO.
EX-2

5/24/2011 3:39:01 PM \\m\projects\570013_00_N_Hancock_Rd\Clients_Proj_Number\Drainage\Temp\DRMPRD02_ex1st1r

RECEIVED
MAY 31 2011
ALTAMONTE



NOTE:
DO NOT USE THE INFORMATION ON THIS SHEET FOR CONSTRUCTION PURPOSES. THIS SHEET IS IN THE PLANS FOR DOCUMENTATION AND TO ASSIST CONSTRUCTION PERSONNEL WITH DRAINAGE CONCERNS

EXISTING AREA TO RESERVE AT MINNEOLA POND = 2.341 AC.
(1.288 AC. IMPERVIOUS)

LEGEND
--- BASIN LINE

50126-4

REVISIONS	DATE

TYLIN INTERNATIONAL
225 E. ROBINSON STREET, SUITE 490
ORLANDO, FLORIDA 32801
P 407.563.7101 F 407.999.5228
CERTIFICATE OF AUTHORIZATION 00002017



LAKE COUNTY
DEPARTMENT OF PUBLIC WORKS
ENGINEERING DIVISION
123 N. SINCLAIR AVENUE
TAVARES, FLORIDA 32778

Dino E. Lucarelli
SIGNATURE
DATE 5/24/11
DINO E. LUCARELLI, P.E., NO. 39556

**PRE-DEVELOPMENT
DRAINAGE MAP**

SHEET NO.
EX-3