

50126-2

4



Oversized Drawings

1723

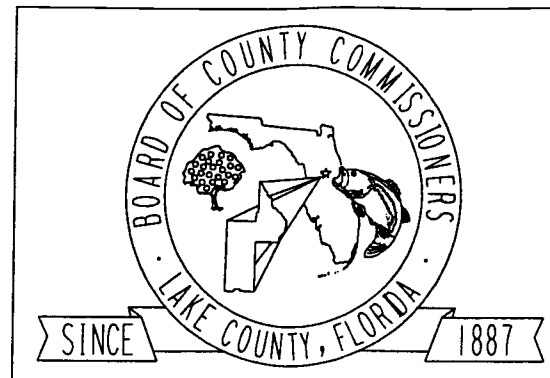
LAKE COUNTY PUBLIC WORKS DEPARTMENT

ENGINEERING DIVISION

COUNTY COMMISSIONERS

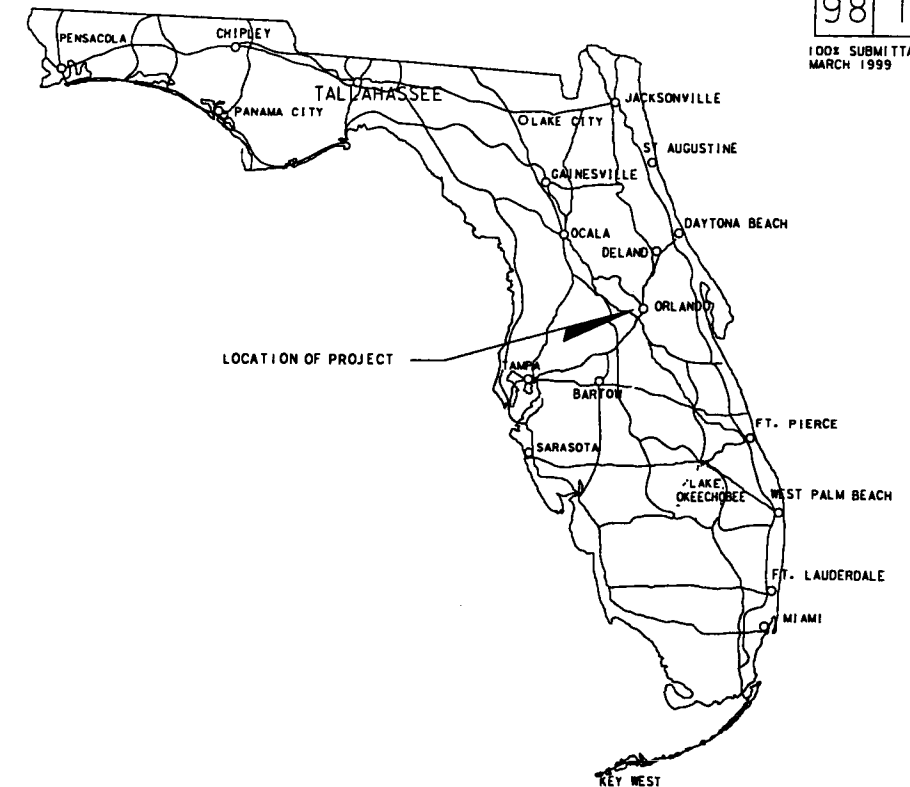
- DISTRICT 1 - RHONDA H. GERBER
- DISTRICT 2 - ROBERT A. POOL
- DISTRICT 3 - G. RICHARD SWARTZ, JR.
- DISTRICT 4 - CATHERINE C. HANSON, VICE CHAIRMAN
- DISTRICT 5 - WELTON G. CADWELL, CHAIRMAN

COUNTY MANAGER - SUE B. WHITTLE
 PUBLIC WORKS DIRECTOR - JIM STIVENDER, JR., P.E., P.L.S.
 DIRECTOR OF ENGINEERING - FREDERICK J. SCHNEIDER, P.E.



PROPOSED PLANS FOR
NORTH HANCOCK ROAD
 (PHASE IB)
 LAKE COUNTY

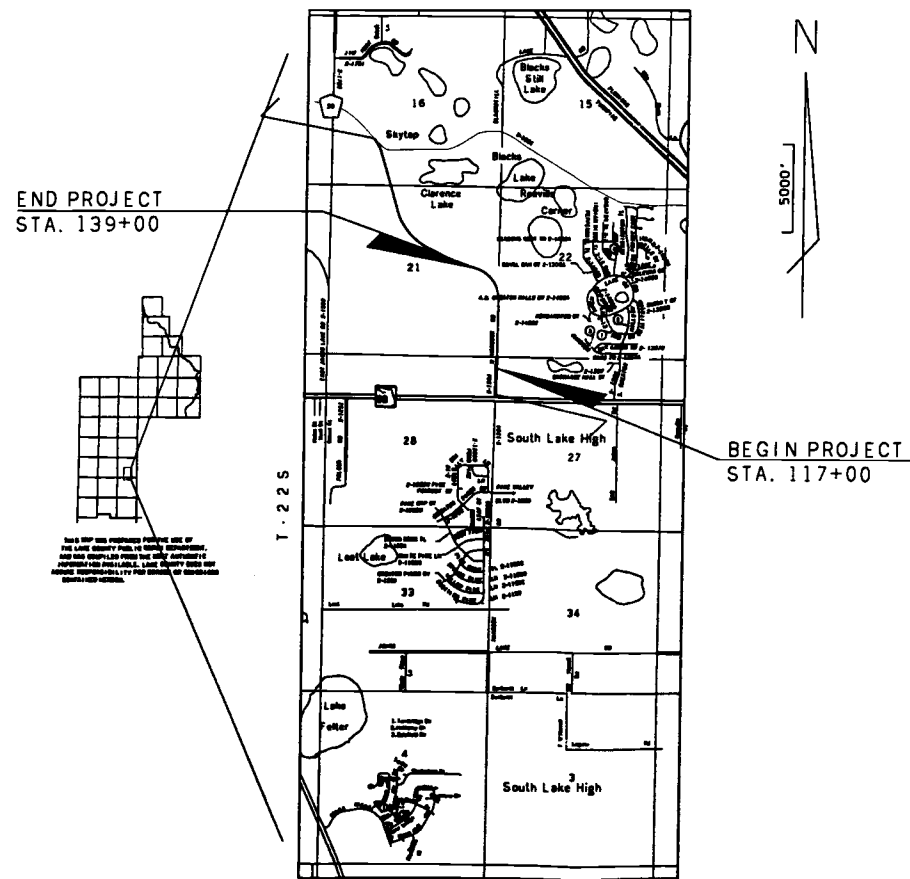
R-26E



98 1
 100% SUBMITTAL
 MARCH 1999

INDEX OF ROADWAY PLANS

SHEET NO.	SHEET DESCRIPTION
1	KEY SHEET
2	AERIAL
3	TYPICAL SECTION SHEET
4	GENERAL NOTES & DRAINAGE DETAILS
5-6	ROADWAY PLAN / PROFILE SHEETS
7-8	TUNNEL PLAN & PROFILE SHEETS
9-16	ROADWAY CROSS SECTIONS
17	SIGNING AND MARKING PLAN SHEET
18	SOIL BORING SHEET



PREPARED FOR:
 LAKE COUNTY PUBLIC WORKS DEPT.
 123 N. SINCLAIR AVE.
 TAVARES, FLORIDA 32778
 (352) 343-9655

PLANS PREPARED BY:

VHB

Vanasse Hangen Brustlin, Inc.
 Transportation, Land Development,
 Environmental Services
 135 W. Central Blvd., Suite 1150
 Orlando, FL 32801 (407) 839-4006
 WWW.VHB.COM

APR 13 1999

PDS
 ORLANDO
 SJR WMD

ENGINEER OF RECORD: J. DWYNE DARBONNE, P.E.

APPROVED BY: *J. Dwyne Darbonne*

DATE: 4/13/99
 P.E. NO.: 39820

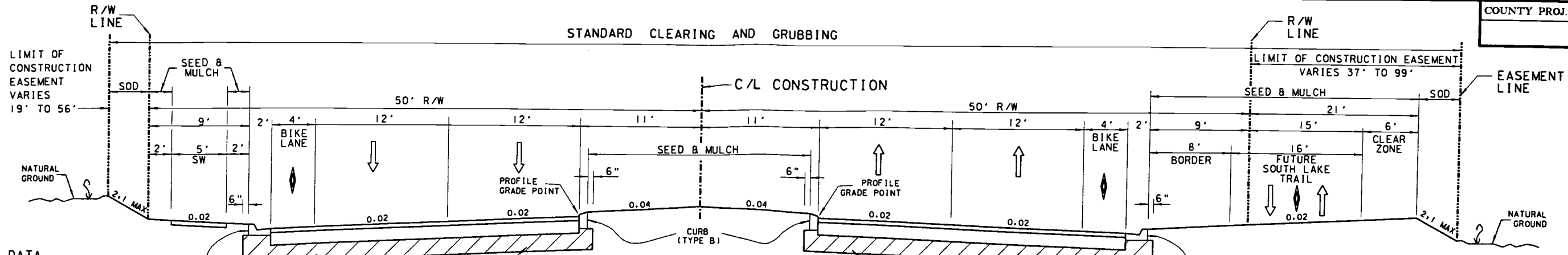
50126-2
 139 HANGM-000
 42-069-4466 ANG-81R
RECEIVED

GOVERNING SPECIFICATIONS: STATE OF FLORIDA,
 DEPARTMENT OF TRANSPORTATION, STANDARD
 SPECIFICATIONS, DATED 1991, SUPPLEMENTS AND
 SPECIAL PROVISIONS THERETO IF NOTED IN THE
 CONTRACT SPECIFICATIONS FOR THIS PROJECT.

THESE PLANS HAVE BEEN PREPARED
 IN ACCORDANCE WITH AND ARE GOVERNED
 BY THE STATE OF FLORIDA
 DEPARTMENT OF TRANSPORTATION,
 ROADWAY AND TRAFFIC DESIGN STANDARDS
 (BOOKLET DATED JANUARY, 1994).

REVISIONS		
DATE	BY	DESCRIPTION

LENGTH OF PROJECT		
	LINEAR FEET	MILES
GROSS LENGTH OF PROJECT	2200	0.42

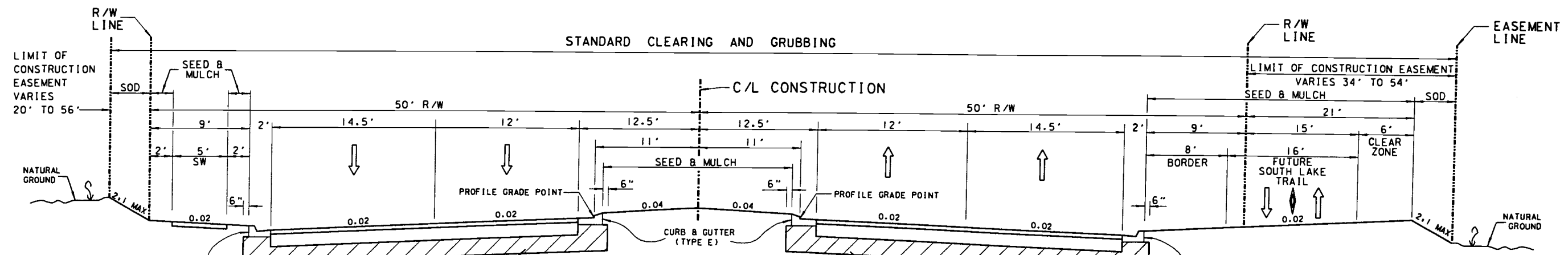


TYPICAL SECTION
STA 117+00.00 TO STA 135+00.00

NEW CONSTRUCTION
TYPE B STABILIZATION (12")
LIMEROCK BASE (LBR 100) (6")
TYPE S STRUCTURAL COURSE (2")
FRICTION COURSE FC-3 (1")

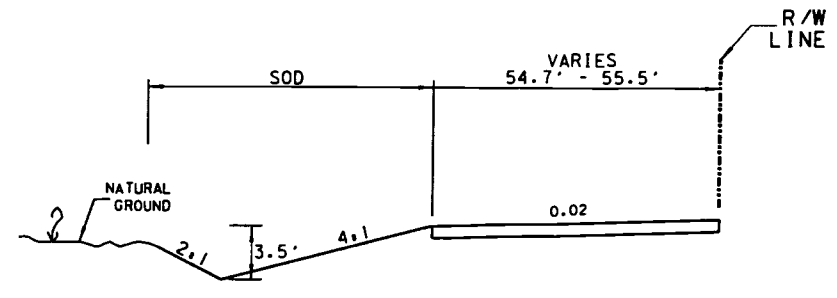
TRAFFIC DATA
EST. 1999 A.D.T. - 6,800 Vpd
EST. 2009 A.D.T. - 20,000 Vpd
EST. 2019 A.D.T. - 20,400 Vpd
EST. 2019 D.H.V. - 1,830 Vpd
K-9% D-65% 24-HR. T-5%

DESIGN SPEED - 45 MPH



TYPICAL SECTION
STA 135+00.00 TO STA 139+00.00

NEW CONSTRUCTION
TYPE B STABILIZATION (12")
LIMEROCK BASE (LBR 100) (6")
TYPE S STRUCTURAL COURSE (2")
FRICTION COURSE FC-3 (1")



CONSTRUCTION DETAIL A
PROFILE OF PROPOSED
PARK SQUARE HOMES ENTRANCE

1391ANGM-ERP
42-069-4067ADG-ERP
RECEIVED
APR 13 1999
PDS
ORLANDO
SJR WMD

REVISIONS					
DATE	BY	DESCRIPTION	DATE	BY	DESCRIPTION

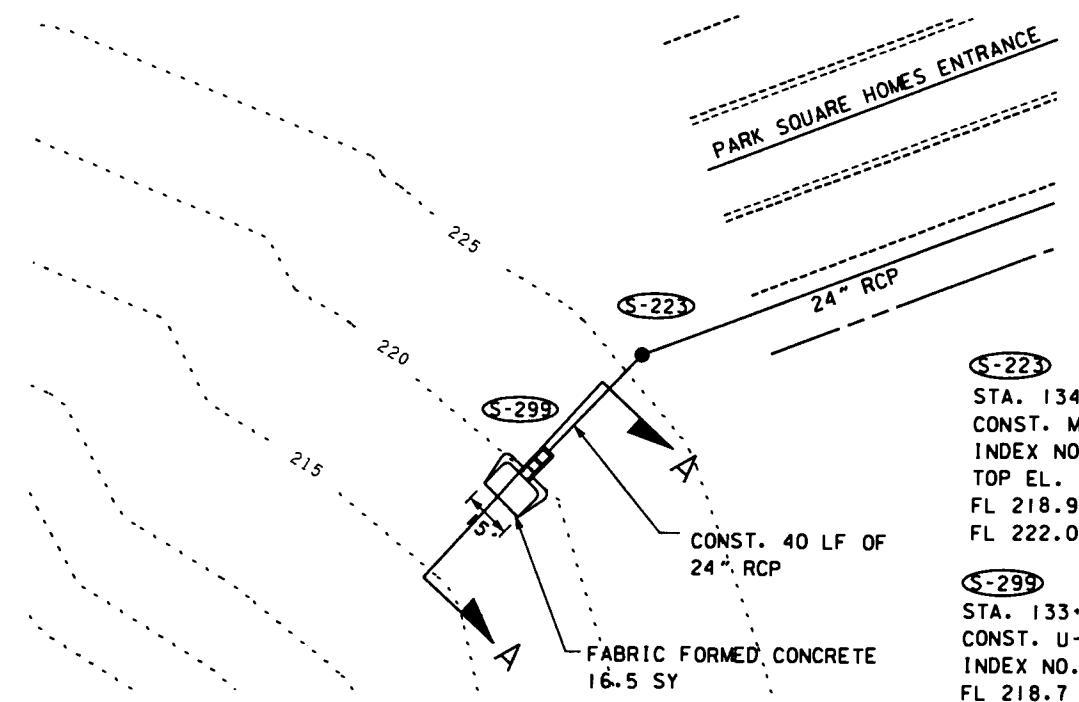
VHB VANASSE HANGEN BRUSTLIN, INC.
TRANSPORTATION, LAND DEVELOPMENT,
ENVIRONMENTAL SERVICES
135 W. CENTRAL BLVD., SUITE 1150
ORLANDO, FL 32801 (407)839-4006

LAKE COUNTY PUBLIC WORKS
ENGINEERING DIVISION
123 N. SINCLAIR AVE.
TAVARES, FLORIDA 32778

TYPICAL SECTION
N. HANCOCK ROAD

GENERAL NOTES

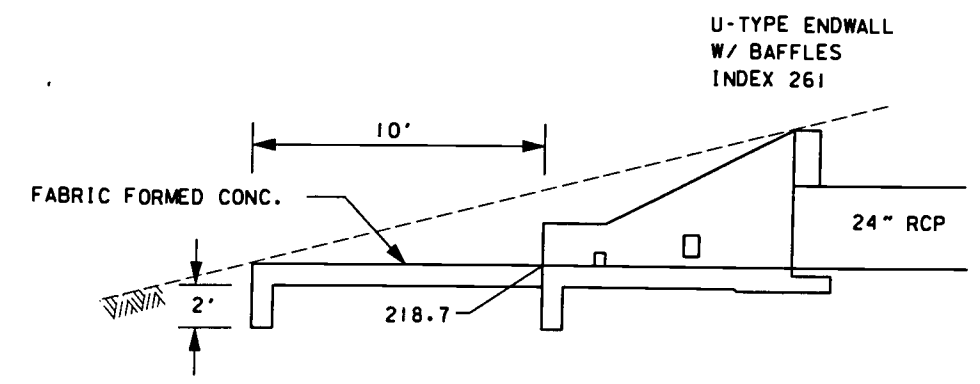
- 1) STRIPING:
 - A) ALL STRIPING TO BE LEAD FREE THERMOPLASTIC.
 - B) STRIPING TO CONFORM TO M.U.T.C.D., LATEST EDITION.
 - C) ALL CENTERLINE STRIPING SHALL HAVE REFLECTIVE RAISED PAVEMENT MARKINGS (RPM'S) UNLESS OTHERWISE NOTED.
- 2) EROSION AND SEDIMENT CONTROL:
 - A) THE CONTRACTOR MUST INSTALL AND MAINTAIN GRASS, SEED AND MULCH, OR SOD ON EXPOSED SLOPES WITHIN 48 HOURS OF COMPLETED FINAL GRADES, AND AT ANY OTHER TIME AS NECESSARY TO PREVENT EROSION, SEDIMENTATION OR TURBID DISCHARGES TO ANY DOWNSTREAM BODY, WETLAND OR OFFSITE PROPERTY. SODDING ON SLOPES 3:1 AND STEEPER SHALL BE STAKED.
 - B) THE CONTRACTOR SHALL BE RESPONSIBLE FOR THE PROJECT COMPLYING WITH APPLICABLE STATE WATER QUALITY STANDARDS DURING CONSTRUCTION AS SPECIFIED IN THE PERMITS. ALL WATER AND WIND EROSION SHALL BE MINIMIZED AS DEFINED IN THE SPECIFICATIONS AND PERMITS. THE SPECIFICATIONS PROVIDE ONLY A MINIMUM REQUIREMENT FOR EROSION AND SEDIMENTATION CONTROL, IT IS THE CONTRACTOR'S RESPONSIBILITY TO IMPLEMENT CONTROL MEASURES NOT SHOWN IN THE SPECIFICATIONS.
 - C) THE CONTRACTOR IS RESPONSIBLE FOR OBTAINING THE NATIONAL POLLUTION DISCHARGE ELIMINATION SYSTEM (NPDES) PERMIT PRIOR TO BEGINNING CONSTRUCTION.
 - D) THE CONTRACTOR SHALL ALSO OPERATE AND MAINTAIN EROSION AND SEDIMENT CONTROL DEVICES AND STRUCTURES IN ACCORDANCE WITH THE REGULATIONS SET FORTH IN NPDES. EROSION AND SEDIMENT CONTROL DEVICES, SUCH AS BALED HAY, STRAW BARRIERS, AND SILT FENCES, MUST BE MAINTAINED AT ALL LOCATIONS UNTIL CONSTRUCTION IS COMPLETED AND DISTURBED SOIL AREAS ARE STABILIZED. THE CONTRACTOR SHALL ALSO BE RESPONSIBLE FOR REMOVING THE EROSION CONTROL DEVICES. AT NO TIME SHALL THERE BE ANY OFFSITE DISCHARGE THAT VIOLATES THE WATER QUALITY STANDARDS IN CHAPTERS 62-302 AND 62-4, FLORIDA ADMINISTRATIVE CODE.
 - E) THE CONTRACTOR SHALL SEED AND MULCH ALL AREAS DISTURBED BY CONSTRUCTION UNLESS SODDING, OR OTHER MORE READILY EFFECTIVE STABILIZING PRACTICES ARE SPECIFIED ON THE PLANS.
- 3) UTILITIES:
 - A) UTILITIES WILL BE PROVIDED AS FOLLOWS:
 1. ELECTRIC WILL BE PROVIDED BY: FLORIDA POWER CORPORATION
3250 BONNETT CREEK ROAD
LAKE BUENA VISTA, FLORIDA 32830
(407) 938-6658
 2. TELEPHONE WILL BE PROVIDED BY: SPRINT
425 NORTH THIRD STREET
LEESBURG, FLORIDA 34748
(352) 329-1754
 3. WATER WILL BE PROVIDED BY: CITY OF CLERMONT
1 WESTGATE PLZ
CLERMONT, FLORIDA 34711
(352) 394-4081
 - B) THE LOCATION OF THE UTILITIES SHOWN IN THE PLANS ARE APPROXIMATE ONLY. THE CONTRACTOR SHALL DETERMINE THE EXACT LOCATION DURING CONSTRUCTION.
 - C) THE CONTRACTOR IS RESPONSIBLE FOR NOTIFYING THE UTILITY COMPANIES PRIOR TO CONSTRUCTION.
 - D) UTILITIES ARE TO BE ADJUSTED BY OTHERS AS DIRECTED BY LAKE COUNTY.
- 4) EXISTING STREETS AND DRIVES SHALL BE MAINTAINED TO LOCAL TRAFFIC AND PROPERTY OWNERS. COST OF DRIVEWAY MAINTENANCE SHALL BE INCLUDED IN THE CONTRACTOR'S BID PRICE FOR TRAFFIC CONTROL.
- 5) CURB CUT RAMPS ARE AS PER F.D.O.T. INDEX NO. 304.
- 6) TRAFFIC CONTROL:
 - A) THE CONTRACTOR SHALL CONFORM TO THE M.U.T.C.D. FOR STREETS AND HIGHWAYS, PART IV, LATEST EDITION, AND F.D.O.T. ROADWAY AND TRAFFIC DESIGN STANDARDS, INDEX NOS. 600-660 AS APPLICABLE.
 - B) THE CONTRACTOR SHALL SUBMIT DETAILED TRAFFIC CONTROL PLANS FOR REVIEW AND APPROVAL BY LAKE COUNTY. COST OF THIS WORK SHALL BE INCLUDED IN THE CONTRACTOR'S BID PRICE FOR TRAFFIC CONTROL.
- 7) ALL EXISTING DRAINAGE STRUCTURES AND PIPES ARE TO REMAIN UNLESS OTHERWISE NOTED.



SCALE: 1"=30'

S-223
STA. 134+27 (277.00 LT.)
CONST. MANHOLE TYPE P-7
INDEX NO. 200,201
TOP EL. 226.00
FL 218.9 (AH)
FL 222.0 (BK)

S-299
STA. 133+96 (315.00 LT.)
CONST. U-TYPE ENDWALL
INDEX NO. 261
FL 218.7



SECTION A - A
NTS

LEGEND	
-X-X-	FENCE
◇	POWER POLE (PP)
⊙	IRON ROD & CAP
△	NAIL
⊛	TREE (UNSPECIFIED)

1391ANGM-ERP
48-069-1406ANG-CL
RECEIVED
APR 13 1999
PDS
ORLANDO
SJR WMD

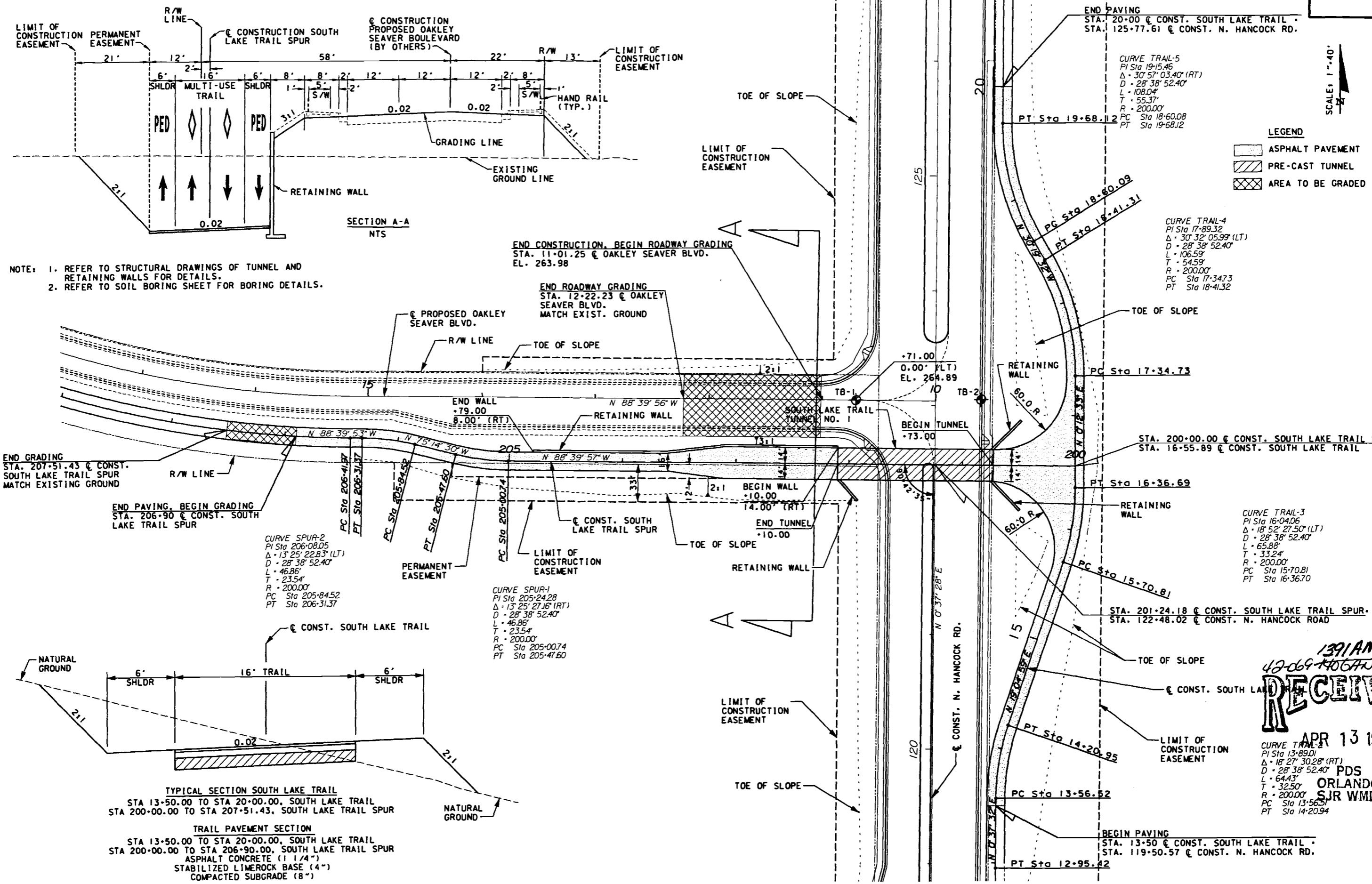
*****SYTIME*****
*****DGN/SPECIFICATION*****

REVISIONS											
DATE	BY	DESCRIPTION	DATE	BY	DESCRIPTION	DATE	BY	DESCRIPTION	DATE	BY	DESCRIPTION

VHB
VANASSE HANGEN BRUSTLIN, INC.
TRANSPORTATION, LAND DEVELOPMENT,
ENVIRONMENTAL SERVICES
135 W. CENTRAL BLVD., SUITE 1150
ORLANDO, FL 32801 (407) 839-4006

LAKE COUNTY PUBLIC WORKS
ENGINEERING DIVISION
123 N. SINCLAIR AVE
TAVARES, FLORIDA 32780

GENERAL NOTES & DRAINAGE DETAILS
N. HANCOCK ROAD



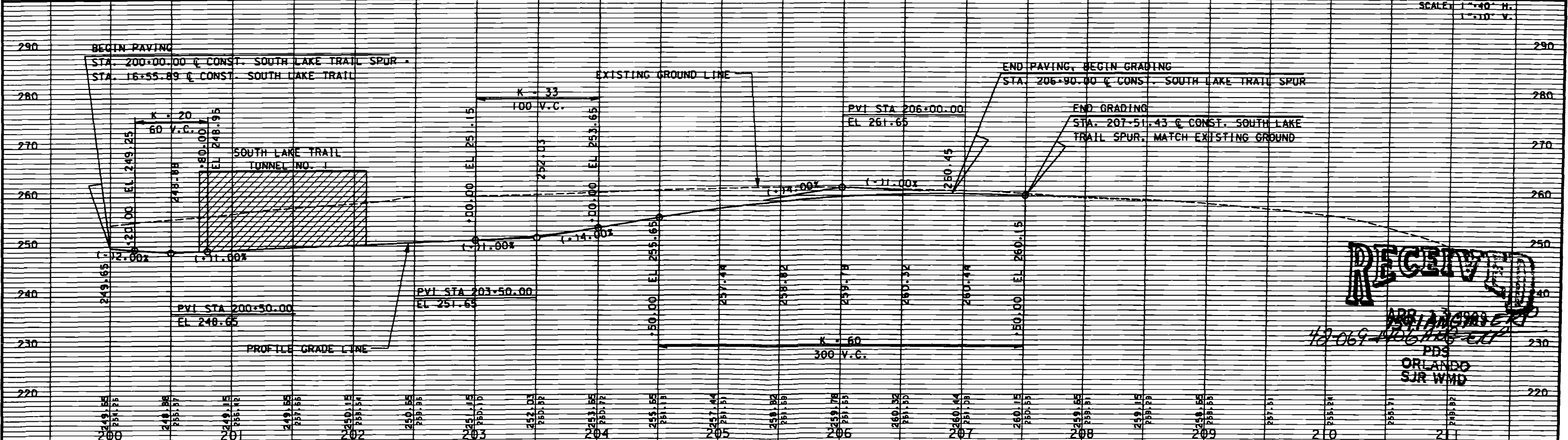
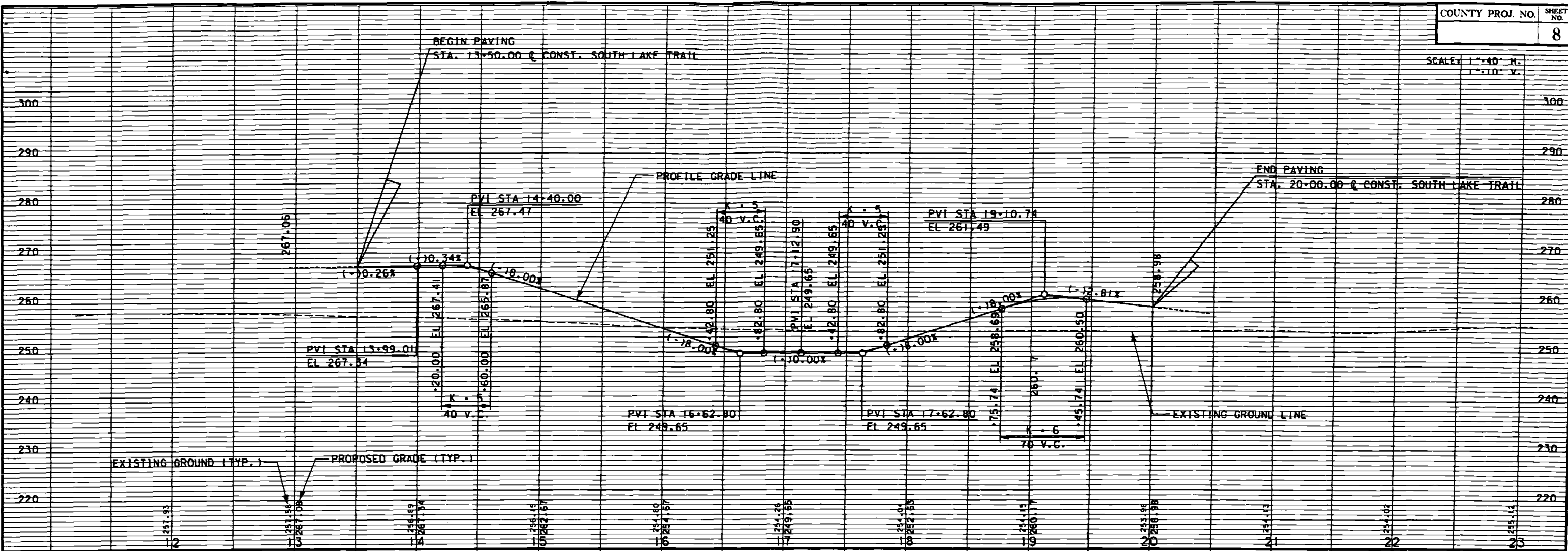
1391ANGM-EAP
 42-069-1405703-ETP
RECEIVED
 APR 13 1999
 PDS
 ORLANDO
 SJR WMD

REVISIONS											
DATE	BY	DESCRIPTION	DATE	BY	DESCRIPTION	DATE	BY	DESCRIPTION	DATE	BY	DESCRIPTION

VHB VANASSE HANGEN BRUSTLIN, INC.
 TRANSPORTATION, LAND DEVELOPMENT,
 ENVIRONMENTAL SERVICES
 135 W. CENTRAL BLVD., SUITE 1150
 ORLANDO, FL 32801 (407) 383-4006

LAKE COUNTY PUBLIC WORKS
 ENGINEERING DIVISION
 153 N. SINCLAIR AVE.
 TAVARES, FLORIDA 32778

**N. HANCOCK RD.
 TUNNEL NO. 1 SITE PLAN**



RECEIVED

ARRANGED BY
42-069-406-116-ETC
PDS
ORLANDO
SJR WMD

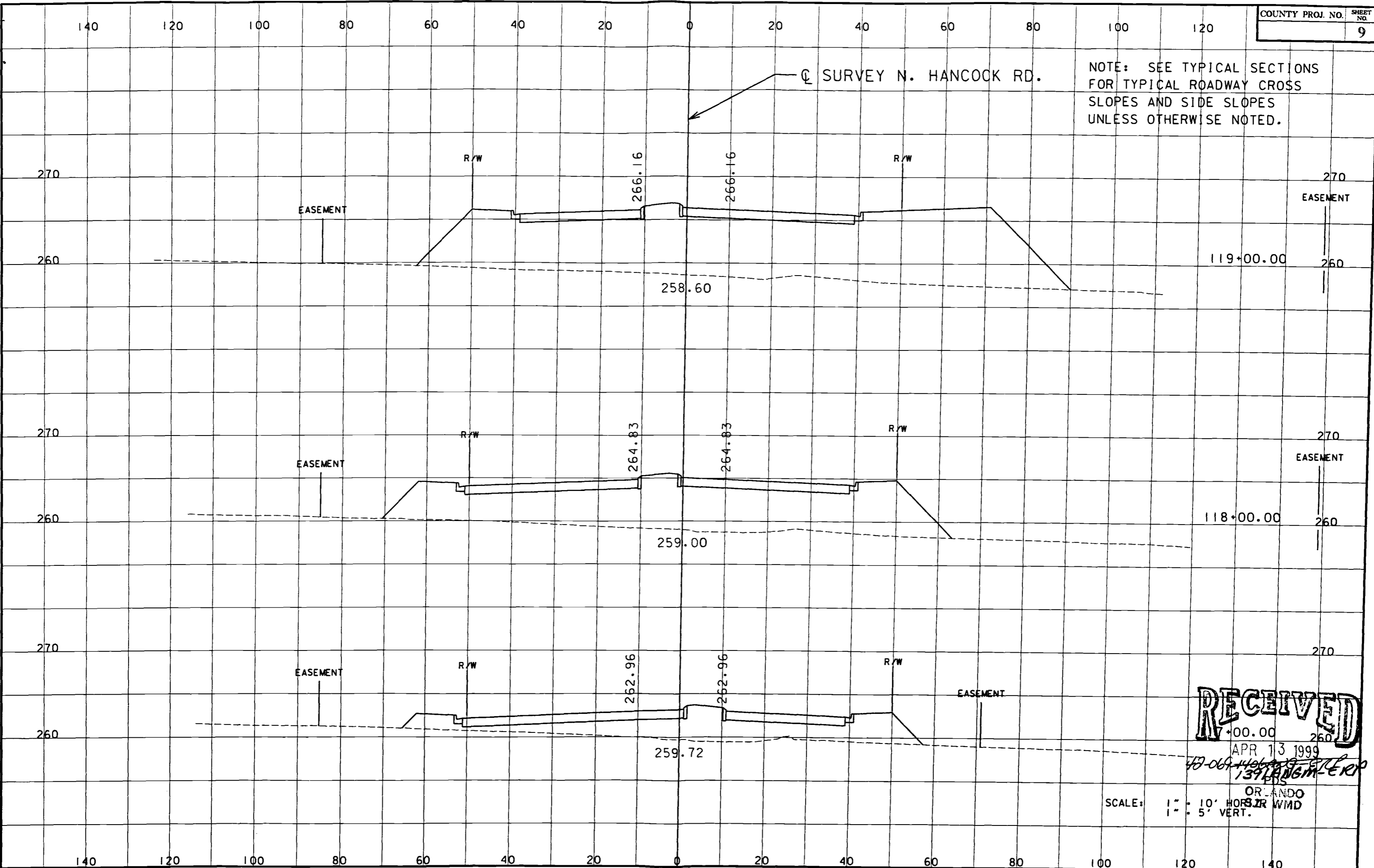
DATE	BY	DESCRIPTION	DATE	BY	DESCRIPTION

VHB YANASSE HANGEN BRUSTLIN, INC. TRANSPORTATION, LAND DEVELOPMENT, ENVIRONMENTAL SERVICES
135 W. CENTRAL BLVD., SUITE 1150 ORLANDO, FL 32801 (407)839-4006

LAKE COUNTY PUBLIC WORKS ENGINEERING DIVISION
155 N. SINCLAIR AVE. TAVARES, FLORIDA 32778

N. HANCOCK RD. TUNNEL NO. 1 PROFILES

*****SYTIME*****
*****DESIGN/NOTIFICATION*****



NOTE: SEE TYPICAL SECTIONS FOR TYPICAL ROADWAY CROSS SLOPES AND SIDE SLOPES UNLESS OTHERWISE NOTED.

Q SURVEY N. HANCOCK RD.

RECEIVED

APR 13 1999

48-067-446-009-512-EXP
1391861M-EXP
PDS

ORLANDO
SJR WMD

SCALE: 1" = 10' HORIZ.
1" = 5' VERT.

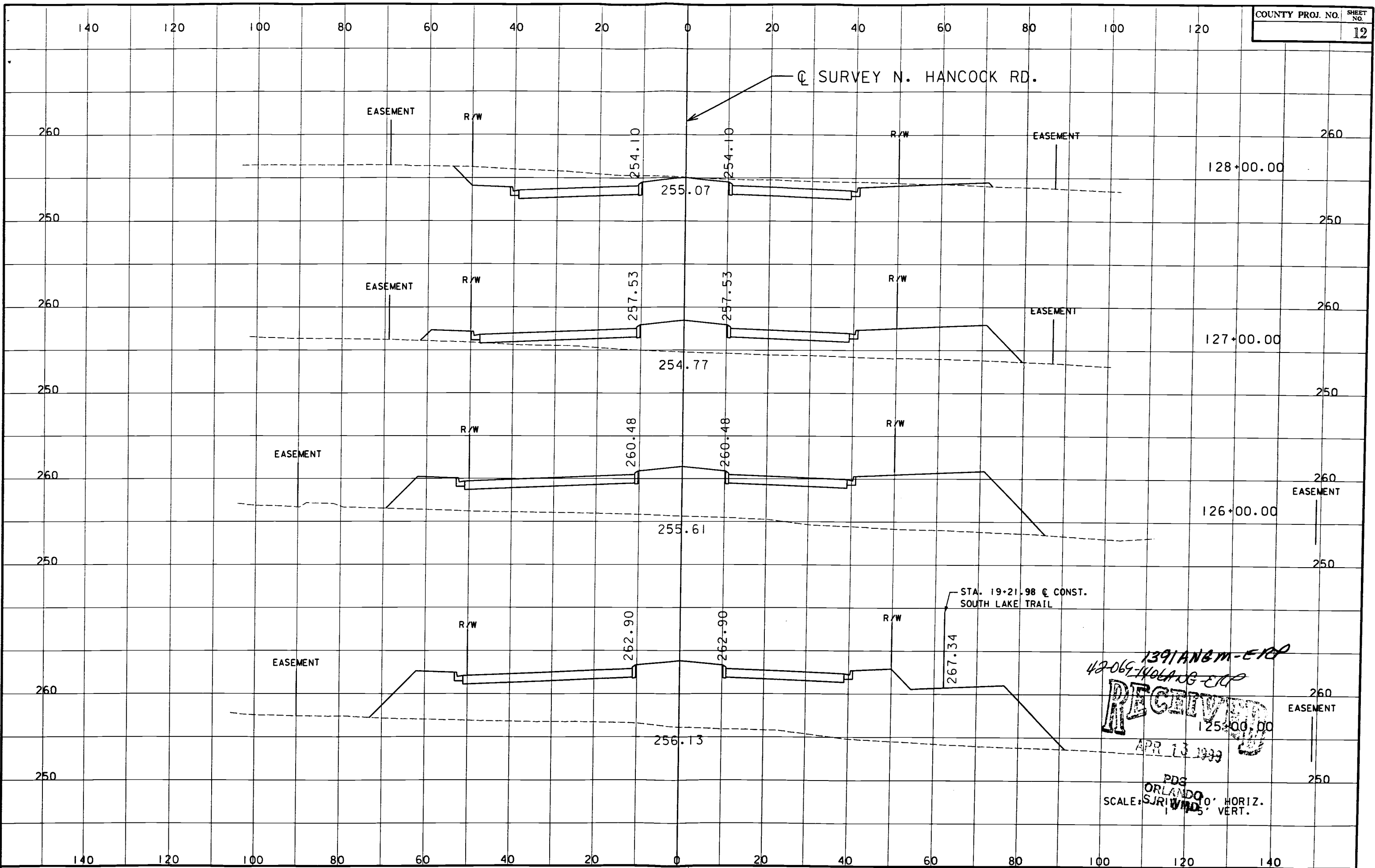
*****SYTIME*****
*****CONSPICATION*****

REVISIONS											
DATE	BY	DESCRIPTION	DATE	BY	DESCRIPTION	DATE	BY	DESCRIPTION	DATE	BY	DESCRIPTION

VHB VANASSE HANGEN BRUSTLIN, INC.
TRANSPORTATION, LAND DEVELOPMENT,
ENVIRONMENTAL SERVICES
135 W. CENTRAL BLVD., SUITE 1150
ORLANDO, FL 32801 (407)839-4006

LAKE COUNTY PUBLIC WORKS
ENGINEERING DIVISION
135 N. SINCLAIR AVE.
TAVARES, FLORIDA 32778

CROSS SECTIONS
N. HANCOCK RD.



1391 ANBM-ETP
 42-069-1401-03-ETP
RECEIVED
 APR 13 1999
 PDS
 ORLANDO
 SCALE: SJR 1"=40' HORIZ.
 VHD 1"=5' VERT.

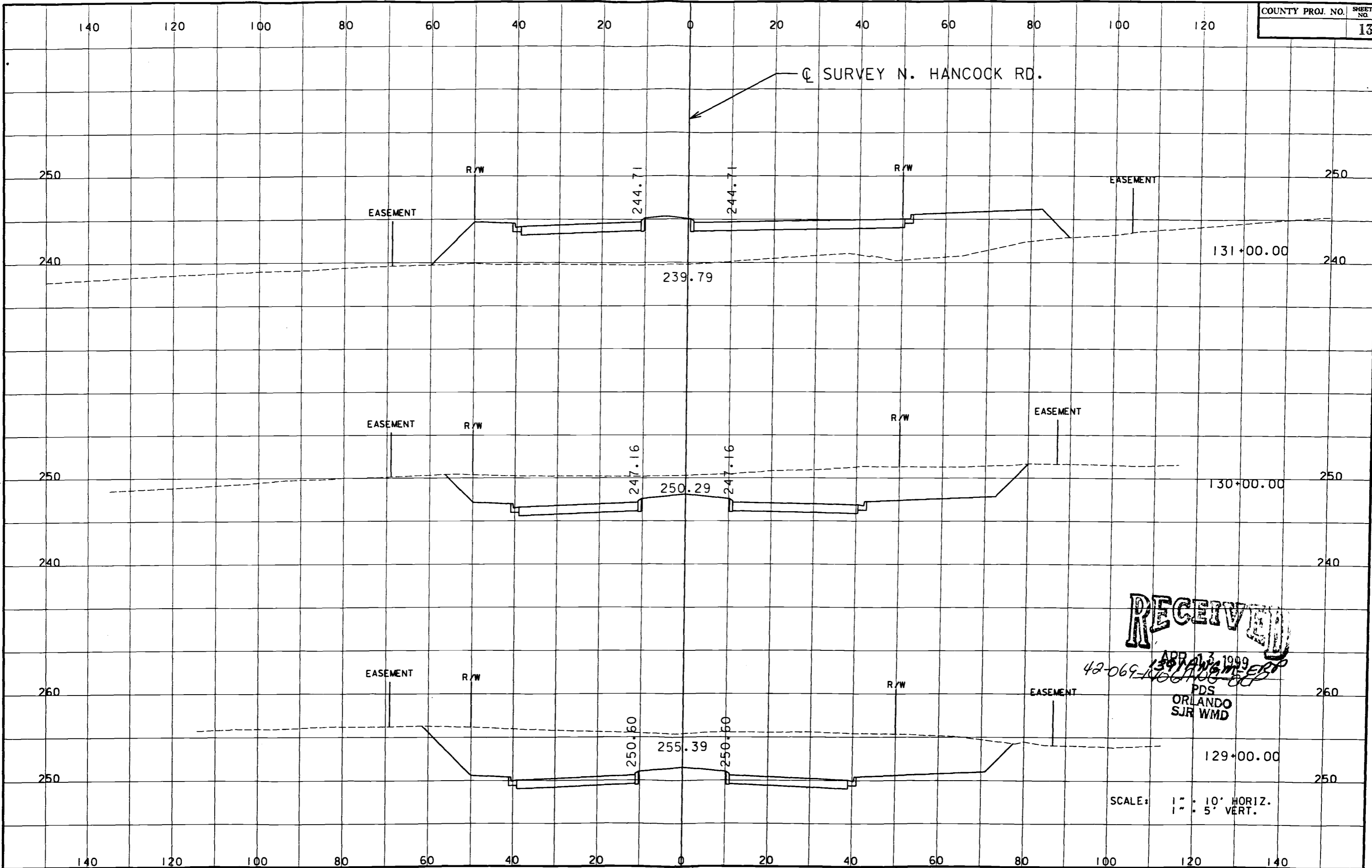
*****SYTIME*****
 *****DISPECIFICATION*****

REVISIONS											
DATE	BY	DESCRIPTION	DATE	BY	DESCRIPTION	DATE	BY	DESCRIPTION	DATE	BY	DESCRIPTION

VHB VANASSE HANGEN BRUSTLIN, INC.
 TRANSPORTATION, LAND DEVELOPMENT,
 ENVIRONMENTAL SERVICES
 135 W. CENTRAL BLVD., SUITE 1150
 ORLANDO, FL 32801 (407) 839-4006

LAKE COUNTY PUBLIC WORKS
 ENGINEERING DIVISION
 135 N. SINCLAIR AVE.
 TAVARES, FLORIDA 32778

CROSS SECTIONS
 N. HANCOCK RD.



RECEIVED
 APR 17 1999
 42-069-130 LAWRENCE
 PDS
 ORLANDO
 SJR WMD

SCALE: 1" = 10' HORIZ.
 1" = 5' VERT.

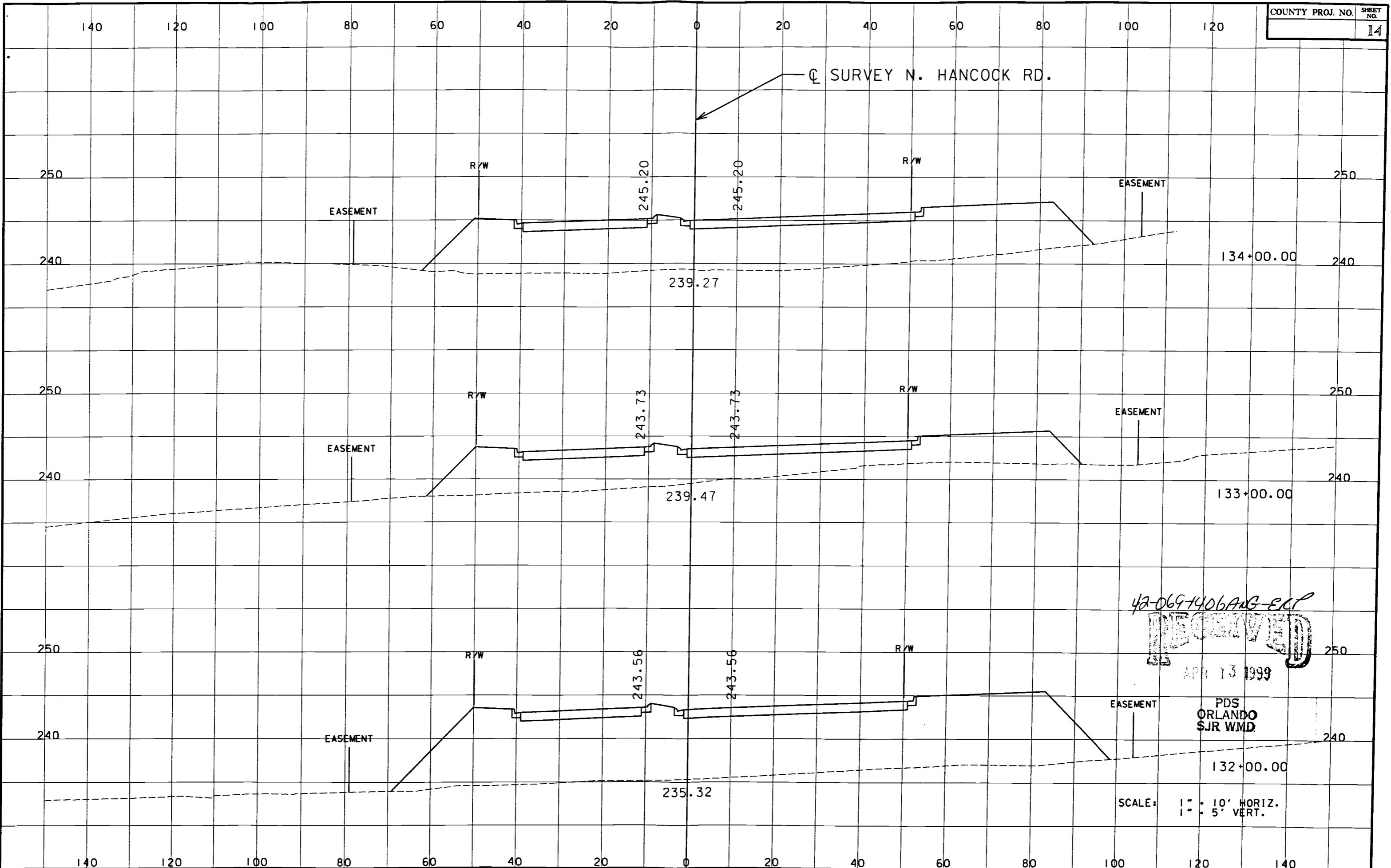
*****SYTIME*****
 *****DISPECIFICATION*****

REVISIONS			
DATE	BY	DESCRIPTION	DATE

VHB
 VANASSE HANGEN BRUSTLIN, INC.
 TRANSPORTATION, LAND DEVELOPMENT,
 ENVIRONMENTAL SERVICES
 135 W. CENTRAL BLVD., SUITE 1150
 ORLANDO, FL 32801 (407)839-4006

LAKE COUNTY PUBLIC WORKS
 ENGINEERING DIVISION
 135 N. SINCLAIR AVE.
 TAVARES, FLORIDA 32778

CROSS SECTIONS
 N. HANCOCK RD.



42-069-406A-G-ECP
RECEIVED
 APR 13 1999

PDS
 ORLANDO
 SJR WMD

SCALE: 1" = 10' HORIZ.
 1" = 5' VERT.

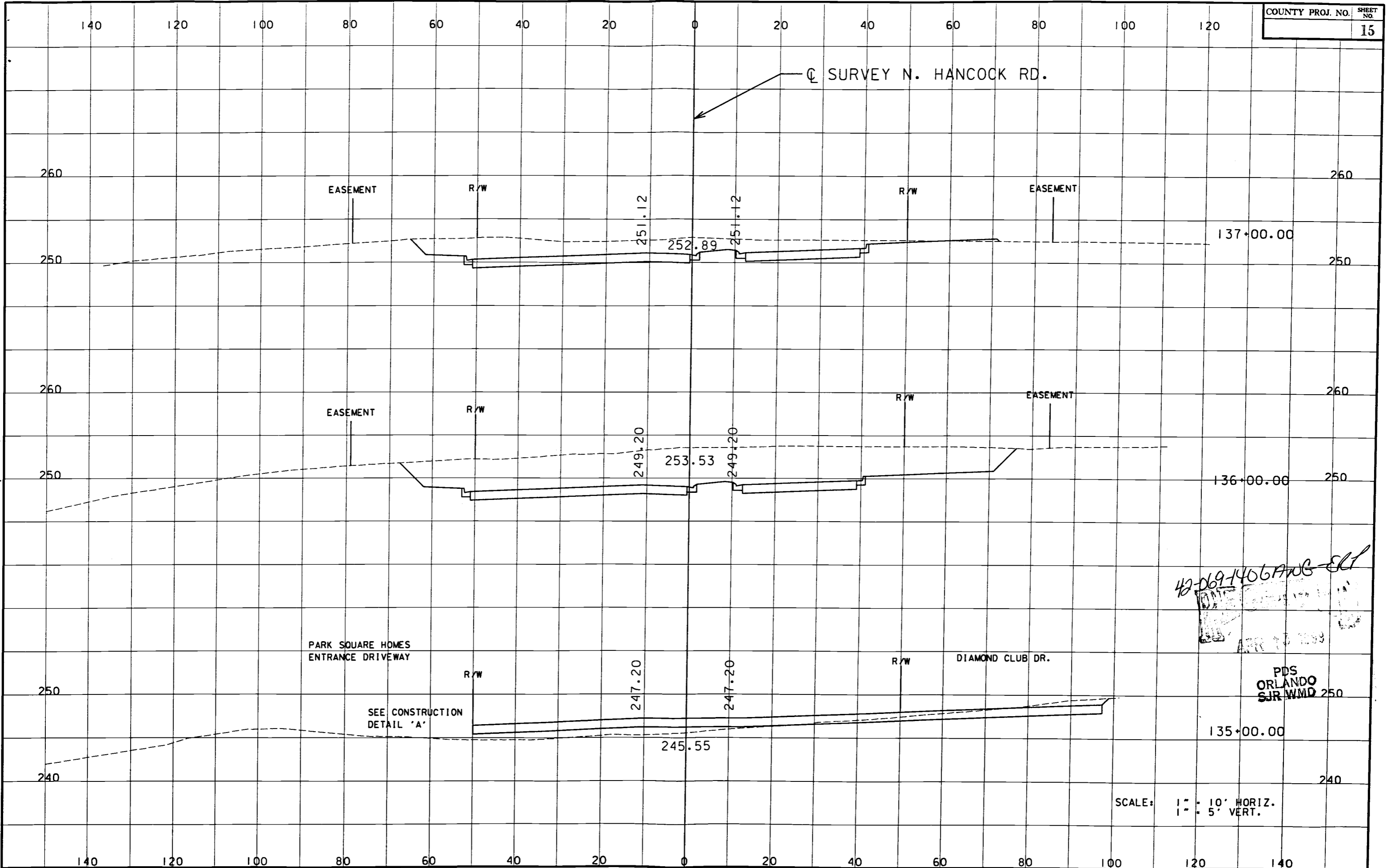
*****SYTIME*****
 *****CONSPICUATION*****

REVISIONS		
DATE	BY	DESCRIPTION

VHB VANASSE HANGEN BRUSTLIN, INC.
 TRANSPORTATION, LAND DEVELOPMENT,
 ENVIRONMENTAL SERVICES
 135 W. CENTRAL BLVD., SUITE 1150
 ORLANDO, FL 32801 (407)839-4006

LAKE COUNTY PUBLIC WORKS
 ENGINEERING DIVISION
 125 N. SINCLAIR AVE.
 TAVARES, FLORIDA 32778

CROSS SECTIONS
 N. HANCOCK RD.



42-069-1406 ADJ-ELT
 APR 13 2009
 PDS ORLANDO SJR WMD 250

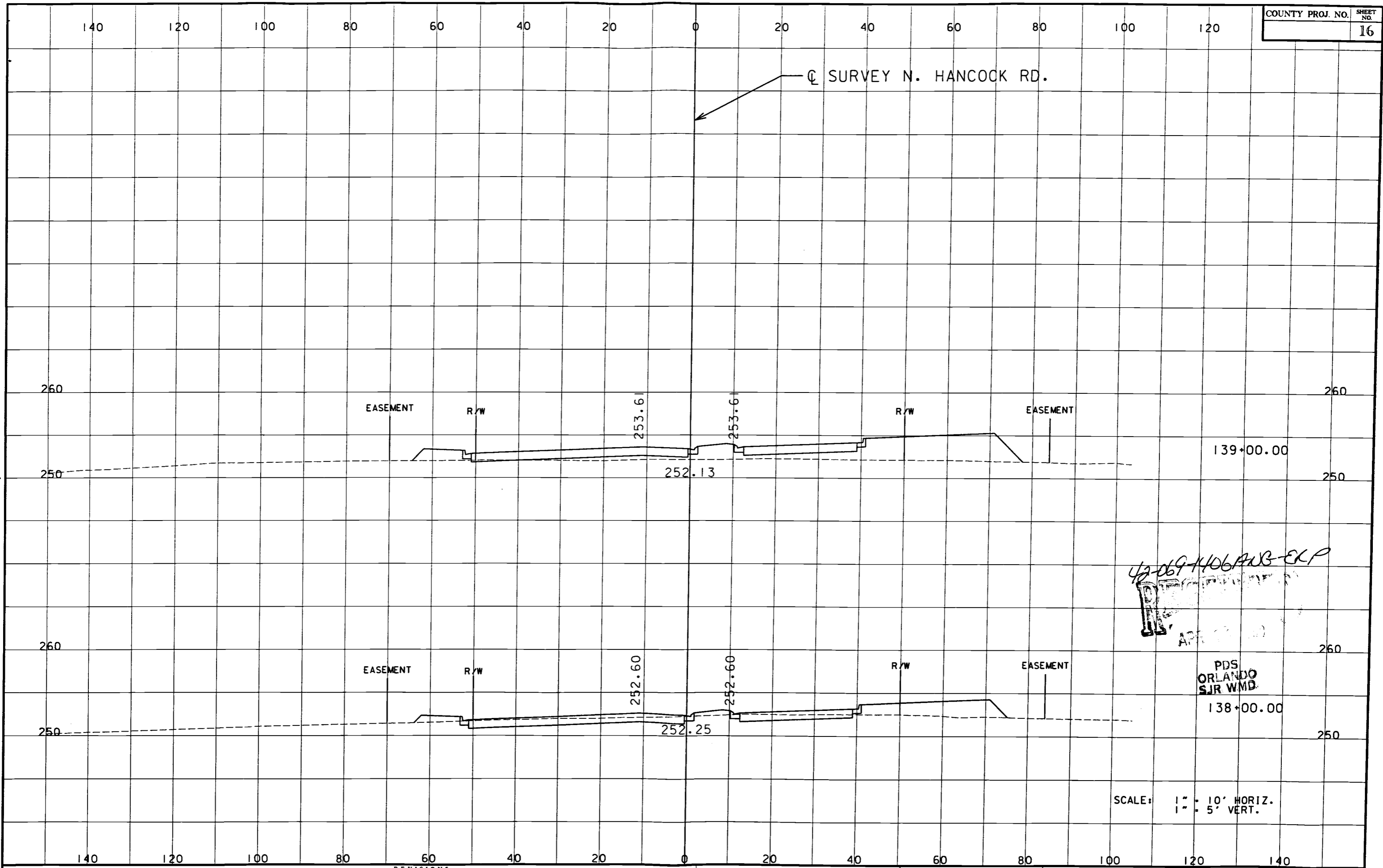
*****SYTIME*****
 *****SPECIFICATION*****

REVISIONS											
DATE	BY	DESCRIPTION	DATE	BY	DESCRIPTION	DATE	BY	DESCRIPTION	DATE	BY	DESCRIPTION

VHB VANASSE HANGEN BRUSTLIN, INC.
 TRANSPORTATION, LAND DEVELOPMENT,
 ENVIRONMENTAL SERVICES
 135 W. CENTRAL BLVD., SUITE 1150
 ORLANDO, FL 32801 (407)839-4006

LAKE COUNTY PUBLIC WORKS
 ENGINEERING DIVISION
 135 N. SINCLAIR AVE.
 TAVARES, FLORIDA 32778

CROSS SECTIONS
 N. HANCOCK RD.



SCALE: 1" = 10' HORIZ.
1" = 5' VERT.

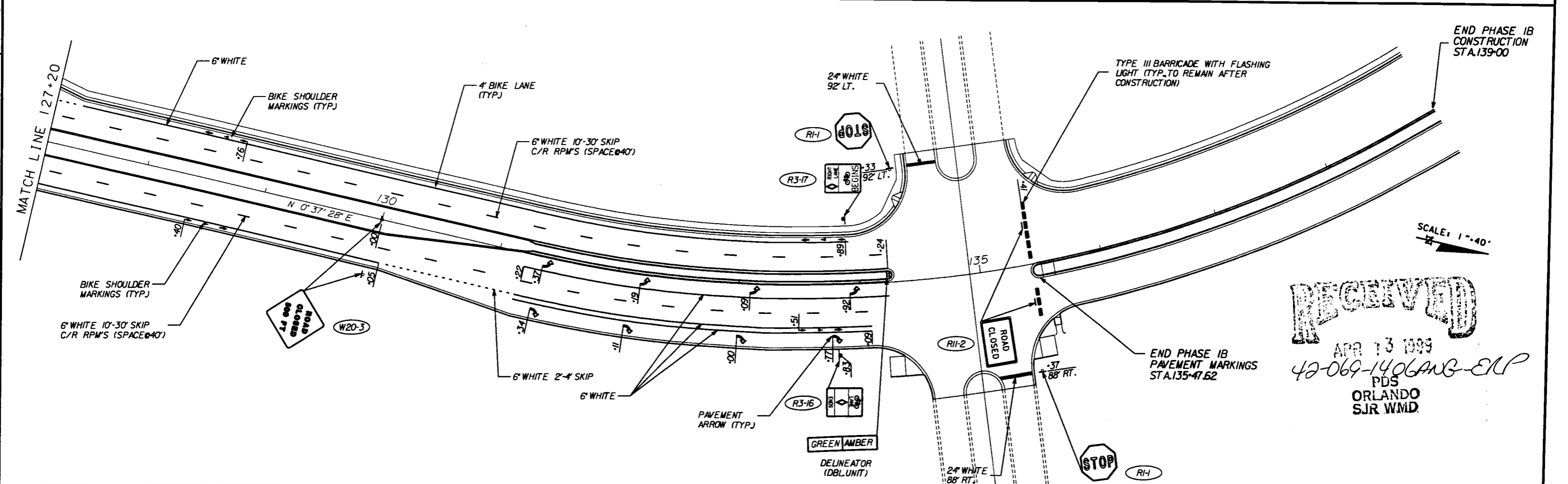
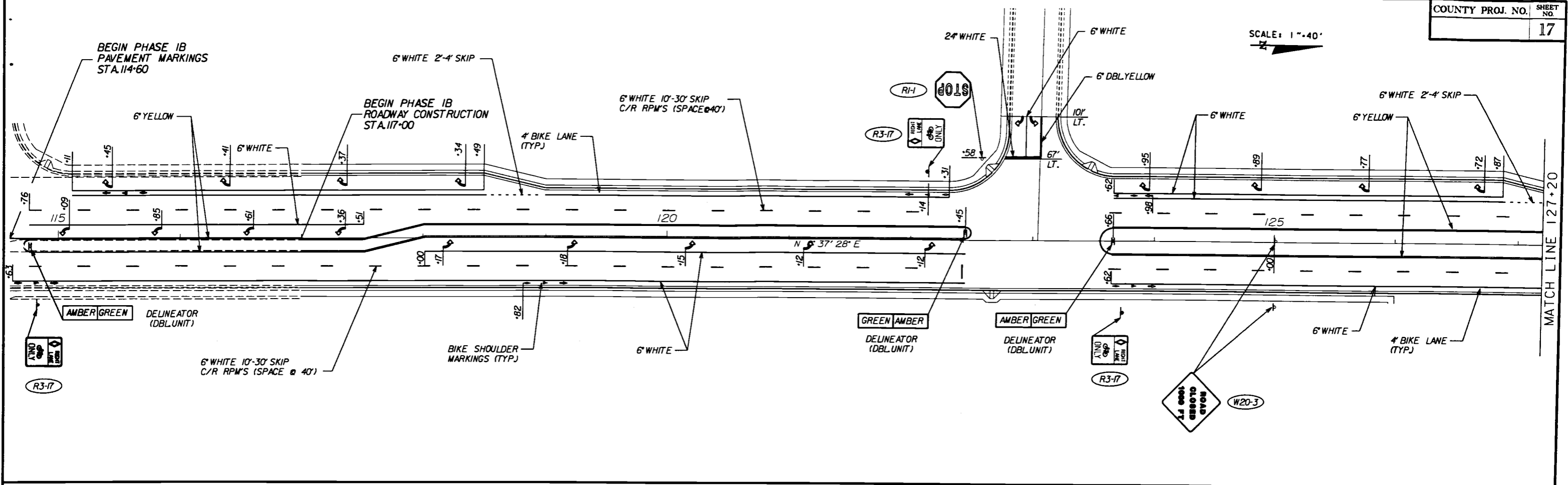
*****SYTIME*****
*****DESCRIPTION*****

REVISIONS			
DATE	BY	DESCRIPTION	

VHB VANASSE HANGEN BRUSTLIN, INC.
TRANSPORTATION, LAND DEVELOPMENT,
ENVIRONMENTAL SERVICES
135 W. CENTRAL BLVD., SUITE 1150
ORLANDO, FL 32801 14071839-4006

LAKE COUNTY PUBLIC WORKS
ENGINEERING DIVISION
125 N. SINCLAIR AVE.
TAVARES, FLORIDA 32778

CROSS SECTIONS
N. HANCOCK RD.



RECEIVED
 APR 13 1999
 42-069-1406 ANG-ERP
 PDS
 ORLANDO
 SJR WMD.

REVISIONS							
DATE	BY	DESCRIPTION	DATE	BY	DESCRIPTION	DATE	BY

VHB VANASSE HANGEN BRUSTLIN, INC.
 TRANSPORTATION, LAND DEVELOPMENT,
 ENVIRONMENTAL SERVICES
 135 W. CENTRAL BLVD., SUITE 1150
 ORLANDO, FL 32801 (407) 839-4006

LAKE COUNTY PUBLIC WORKS
 ENGINEERING DIVISION
 123 N. SINCLAIR AVE.
 TAVARES, FLORIDA 32780

SIGNING & MARKING PLANS
 NORTH HANCOCK ROAD
 STA 117+00 TO STA 139+00

*****SYTIME*****
 *****ORIGIN SPECIFICATION*****