

42-069-1164AN-ERP



1723

8

Oversized Drawings

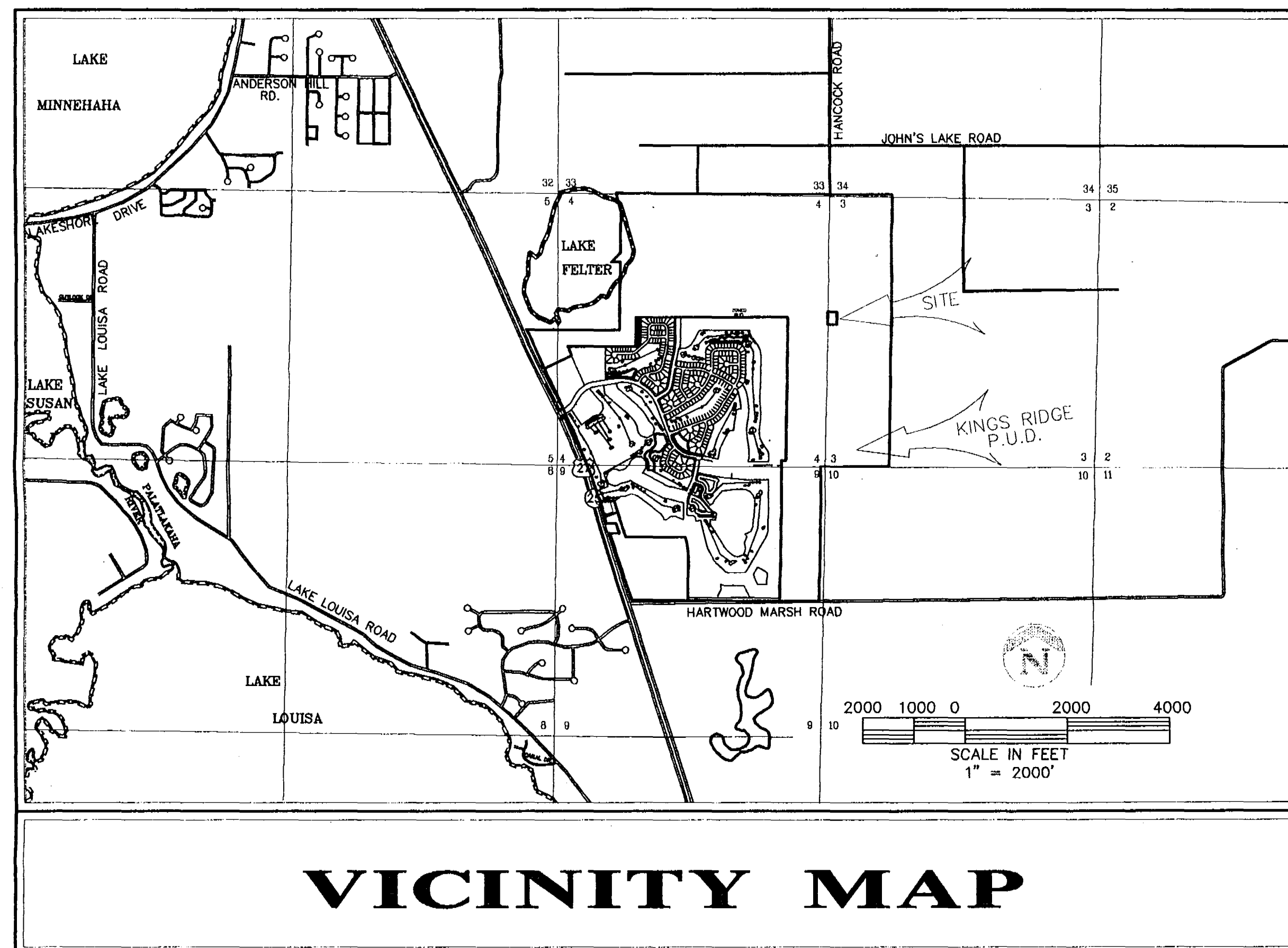
1723

**PLANS FOR CONSTRUCTION
STRATEGIC TECHNOLOGIES INC.
TELECOMMUNICATIONS FACILITY
SITE PLAN
CITY OF CLERMONT, LAKE COUNTY, FLORIDA**

Owner / Developer:
STRATEGIC TECHNOLOGIES INC.
730 NW 107 Avenue
Miami, Florida 33172
(305) 229-6585

Engineer/Planner:
FARNER, BARLEY & ASSOC., INC.
350 North Sinclair Avenue
Tavares, FL 32778
(904) 343-8481
ROBERT E. FARNER, P.E.

Architect:
BLAISE, FIEBACH & ASSOCIATES
350 North Sinclair Avenue
Tavares, FL 32778
(904) 343-0777
ROBERT E. BLAISE JR., AIA



LEGAL DESCRIPTION

A TRACT OF LAND IN SECTIONS 3 AND 4, TOWNSHIP 23 SOUTH, RANGE 26 EAST, LAKE COUNTY, FLORIDA, DESCRIBED AS FOLLOWS:

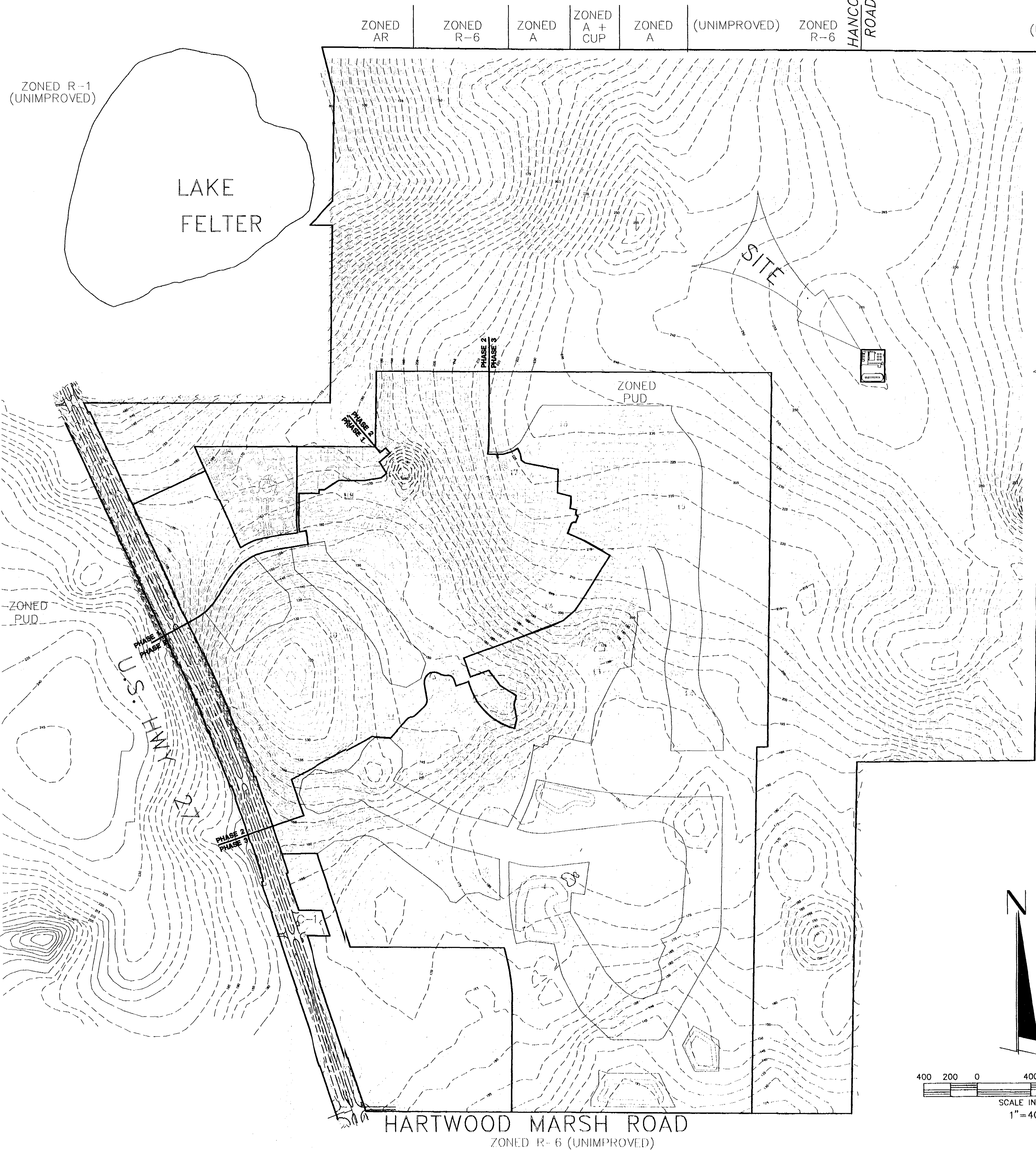
COMMENCE AT THE NORTHWEST CORNER OF AFORESAID SECTION 3; THENCE ALONG THE NORTH LINE OF THE NORTHWEST 1/4 OF SECTION 3 RUN S89°36'55"E 1323.37 FEET TO THE EAST LINE OF THE WEST 1/4 OF SECTION 3; THENCE ALONG SAID EAST LINE RUN S00°23'32"W 2239.71 FEET; THENCE PARALLEL WITH THE NORTH LINE OF AFORESAID NORTHWEST 1/4 OF SECTION 3 RUN N89°36'55"W 1156.65 FEET MORE OR LESS TO A POINT THAT BEARS S89°36'55"E 180.00 FEET OF THE EAST RIGHT-OF-WAY LINE OF HANCOCK ROAD (BEING 80 FEET WIDE) FOR THE POINT OF BEGINNING; THENCE CONTINUE N89°36'55"W 180.00 FEET TO THE EAST RIGHT-OF-WAY LINE OF HANCOCK ROAD; THENCE SOUTHERLY ALONG SAID RIGHT-OF-WAY LINE 242.00 FEET; THENCE S89°36'55"E 180.00 FEET; THENCE NORTHERLY 242.00 FEET TO THE POINT OF BEGINNING.
CONTAINING 1.0 AC. MORE OR LESS

Index Of Sheets

1. COVER SHEET
2. MASTER DEVELOPMENT PLAN
3. SITE PLAN
4. WATER DISTRIBUTION DETAIL SHEET
5. PAVING AND DRAINAGE DETAIL SHEET
6. LIFT STATION DETAILS
7. LANDSCAPE PLAN

RECEIVED
JUL 22 1996
42-169-1164A-ERP
RECORDS
ORLANDO
SJR WMD

JUL 18 1996



DEVELOPMENT NOTES:

1. CONTRACTOR WILL UTILIZE EROSION CONTROL DEVICES IN ALL DISTURBED AREAS; TO BE REMOVED UPON COMPLETION.
2. UPON COMPLETION, ALL DISTURBED AREAS (INCLUDING R/W) WITH SLOPES EXCEEDING 3% WILL BE SODDED, AND REMAINING DISTURBED AREAS WILL BE SEEDED AND MULCHED.

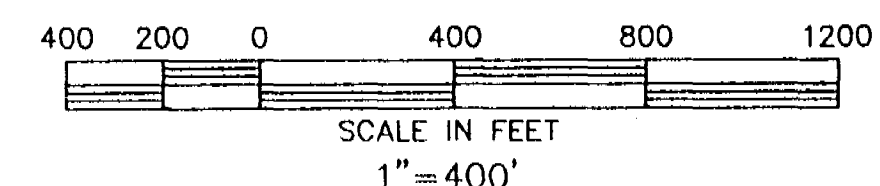
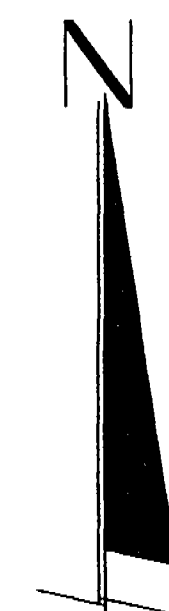
KINGS RIDGE P.U.D.

SUMMARY

CLUBHOUSE
 PRESENT ZONING = P.U.D.
 WATER = CITY OF CLERMONT
 SEWER = CITY OF CLERMONT
 MAINTENANCE ENTITY: WATER = CITY OF CLERMONT
 STORMWATER, COMMON OPEN SPACES = STRATEGIC TECHNOLOGIES, INC.

AREA = 1.010 Ac. (43560.00 S.F.)

- NOTES:**
1. SOIL TYPE -- ASTATULA SAND (100%)
 2. THERE ARE NO MEAN OR ORDINARY HIGH WATER LINES WITHIN THE VICINITY OF THE PROPOSED CONSTRUCTION.



RECORDED
 JUL 22 1996
 ORLANDO
 SJR WMD

REVISIONS	RELOCATED SITE PER CLIENT
DATE	5-30-96

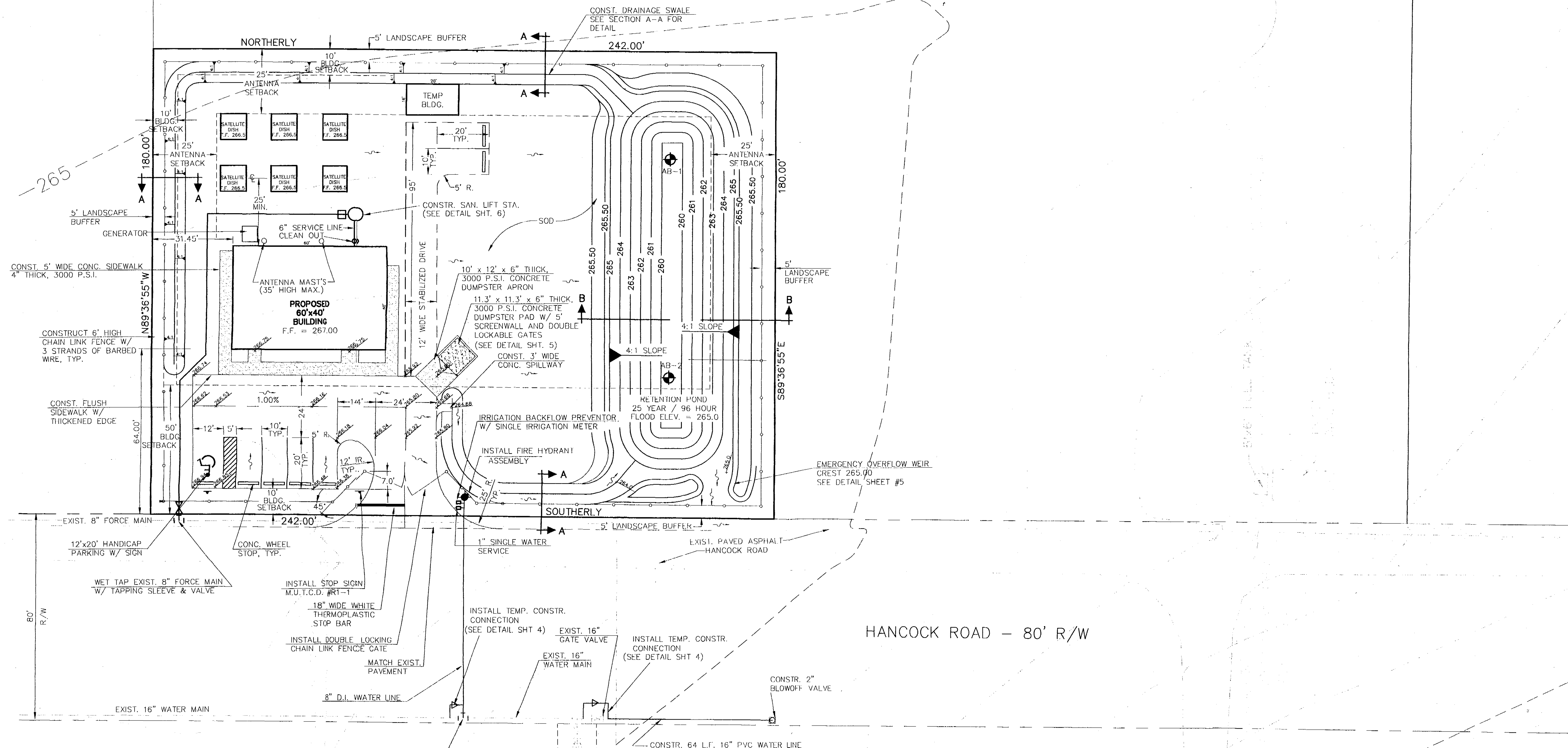
FARNER & BARLEY
 ENGINEERS SURVEYORS AND PLANNERS
 AND ASSOCIATES, INC.
 350 North Sheldar Avenue • Tavares, Florida 32778 • (904) 343-8461

**STRATEGIC TECHNOLOGIES INC.
 TELECOMMUNICATION FACILITY
 MASTER DEVELOPMENT PLAN**

DATE 7-10-96
 JOB NO. 941216.024
 DWG. NO. MDPLAN1
 F.B. PG.
 DRAWN BY DLB
 CHKD BY

SHT. 2 OF 7

JUL 18 1996



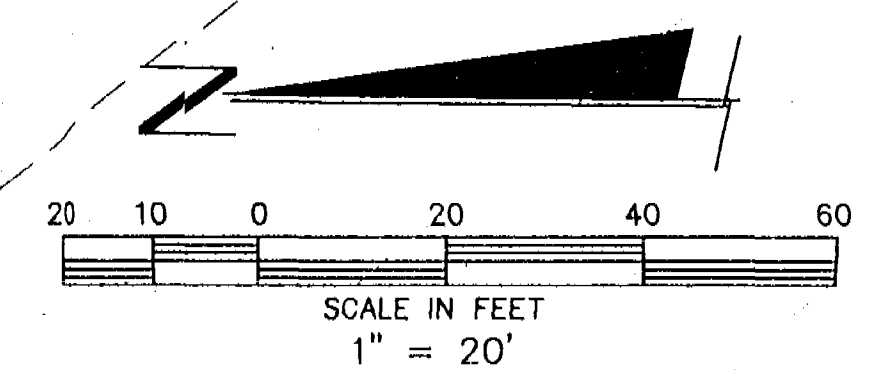
ZONED: P.U.D.
 PROPOSED USE: TELECOMMUNICATIONS FACILITY
 ELECTRIC BY: S.E.C.O. (UNDER GROUND SERVICE REQ'D TO BLDG. & SITE.)
 WATER BY: CITY OF CLERMONT
 SEWER BY: CITY OF CLERMONT
 TELEPHONE BY: UNITED TELEPHONE
 SOLID WASTE BY: LOCAL FRANCHISE

BUILDING CONSTRUCTION: JOIST MASONRY TYPE CONSTRUCTION

PARKING PROVIDED: 5 SPACES
 1 - 12'x20' HANDICAP
 4 - 10'x20' STANDARD
 2 - 10'x20' STANDARD (TEMPORARY)

SOILS: 100% ASTATULA SAND

- TRAFFIC CONTROL NOTES:
1. ALL TRAFFIC CONTROL SIGNS SHALL BE IN ACCORDANCE WITH THE MANUAL ON UNIFORM TRAFFIC CONTROL DEVICES.
 2. ALL TRAFFIC FLOW ARROWS, STOP BARS, & TRAFFIC SEPARATION CENTERLINES SHALL BE THERMOPLASTIC.
 3. PARKING STALLS SHALL BE WHITE AS PER M.U.T.C.D.



RECEIVED
 JUL 22 1996
 RECORDS
 ORLANDO
 SJR WMD

DATE	REVISIONS
5-29-96	RELOCATED SITE PER CLIENT
7-02-96	ADD LIFT STA.

ENGINEERS
 SURVEYORS
 PLANNERS

FARNER BARLEY
 AND ASSOCIATES, INC.

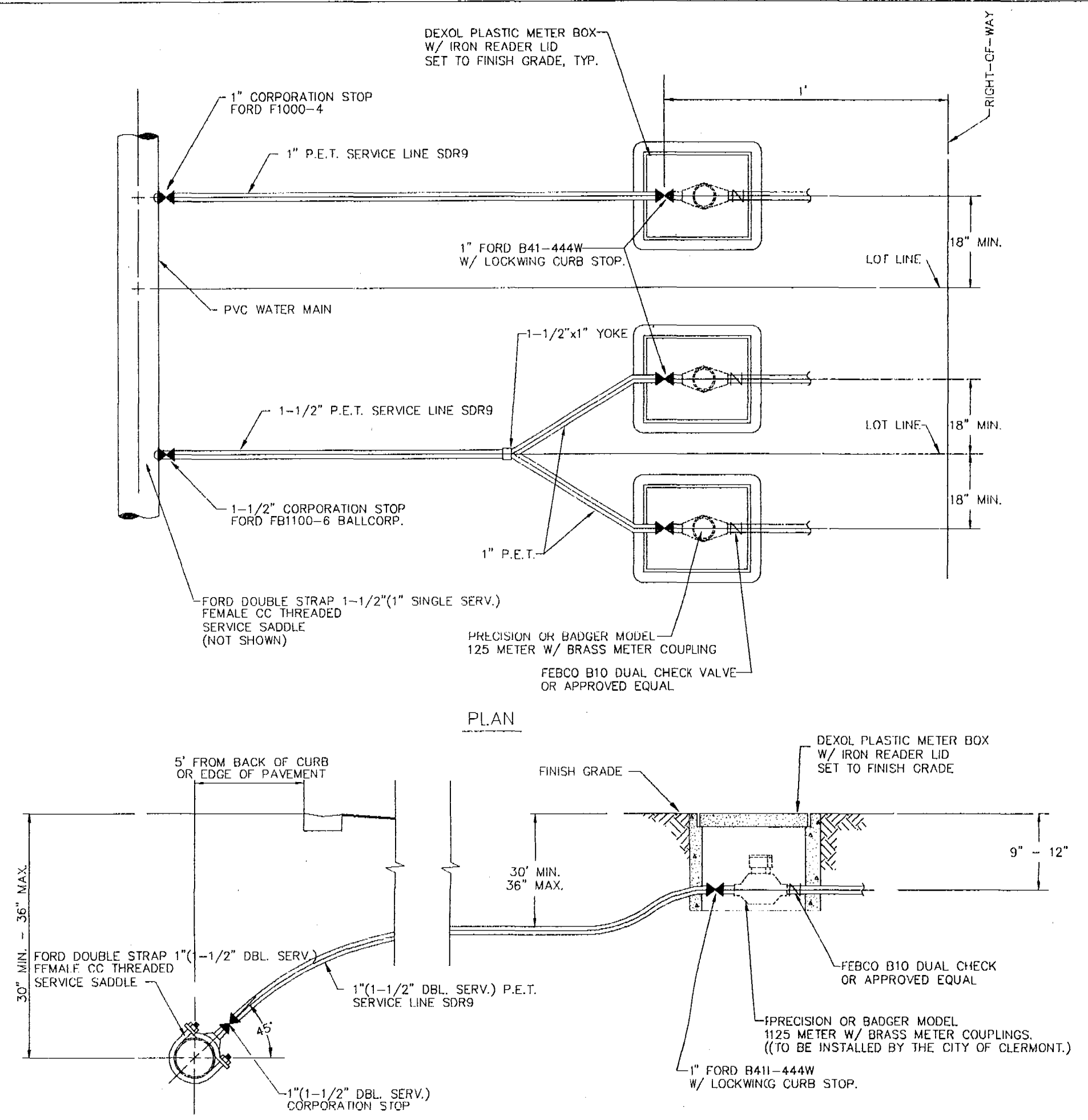
350 North Shadr Avenue
 Ocala, Florida 32778
 (813) 343-8461

**STRATEGIC TECHNOLOGIES INC.
 TELECOMMUNICATIONS CENTER
 SITE PLAN**

DATE	4-18-96
JOB NO.	941216.024
DWG. NO.	SITE
F.B.	PG.
DRAWN BY	DLB
CHKD BY	

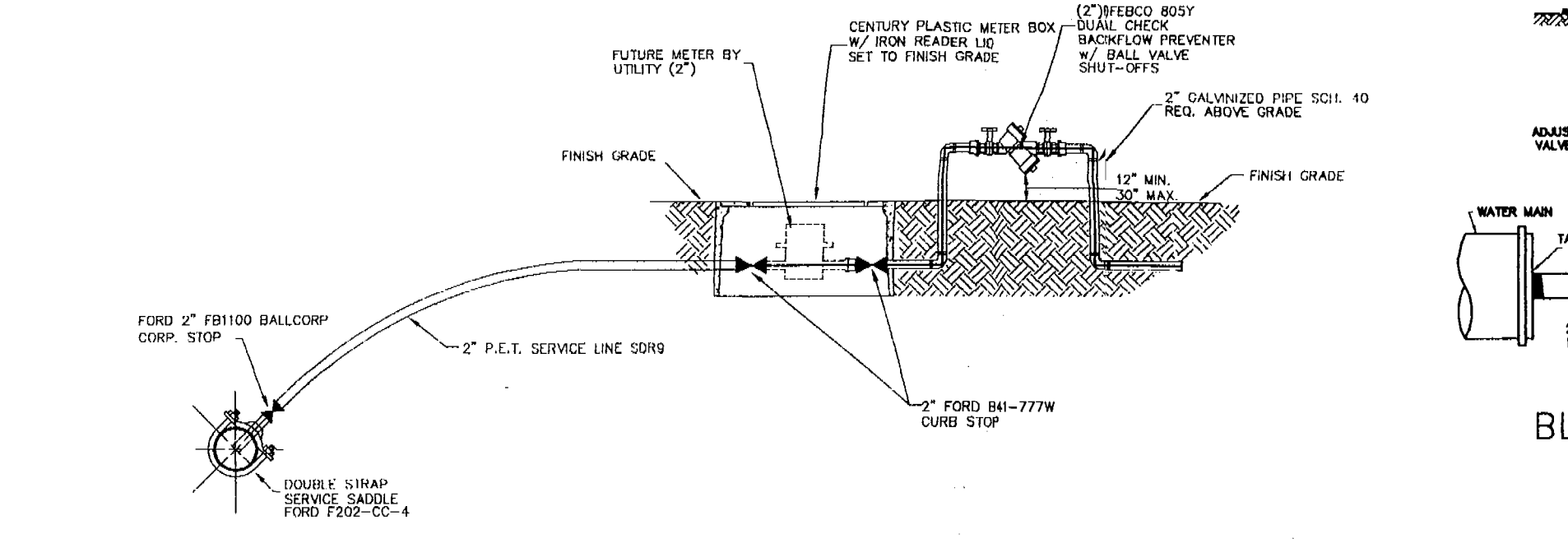
SHT. 3 OF 7

JUL 28 1996



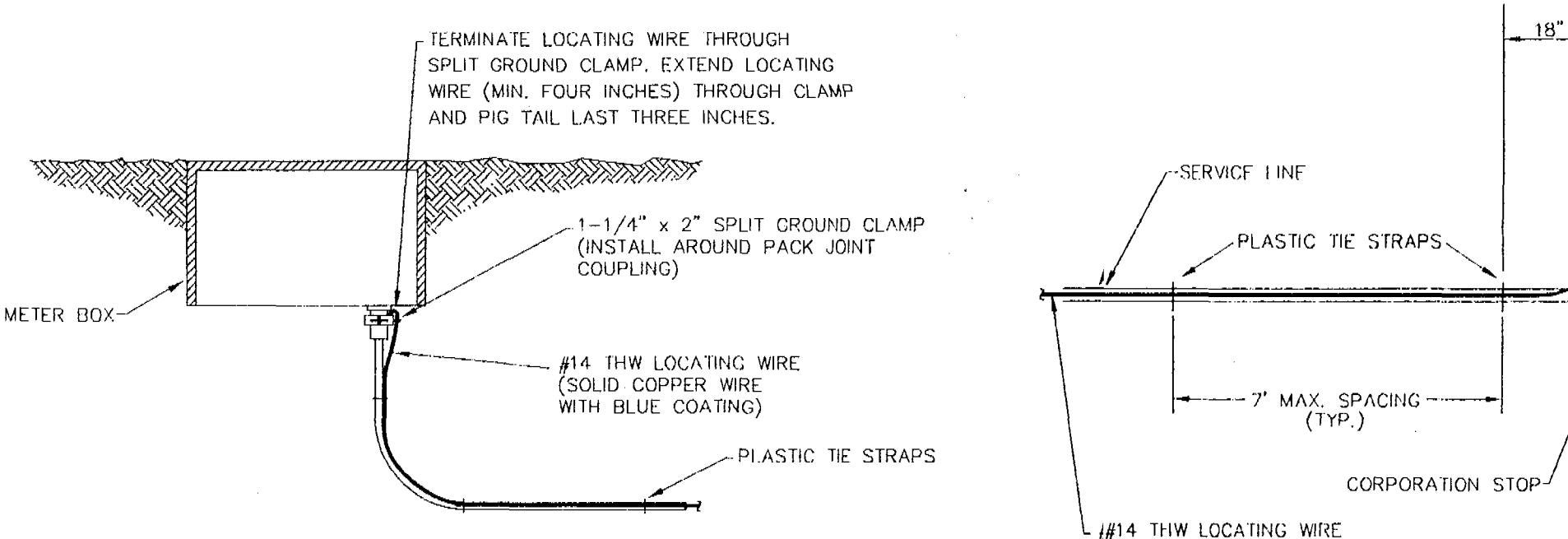
WATER SERVICE CONNECTION DETAILS

NOT TO SCALE
(NOTE: METERS TO BE INSTALLED BY CITY OF CLERMONT.)

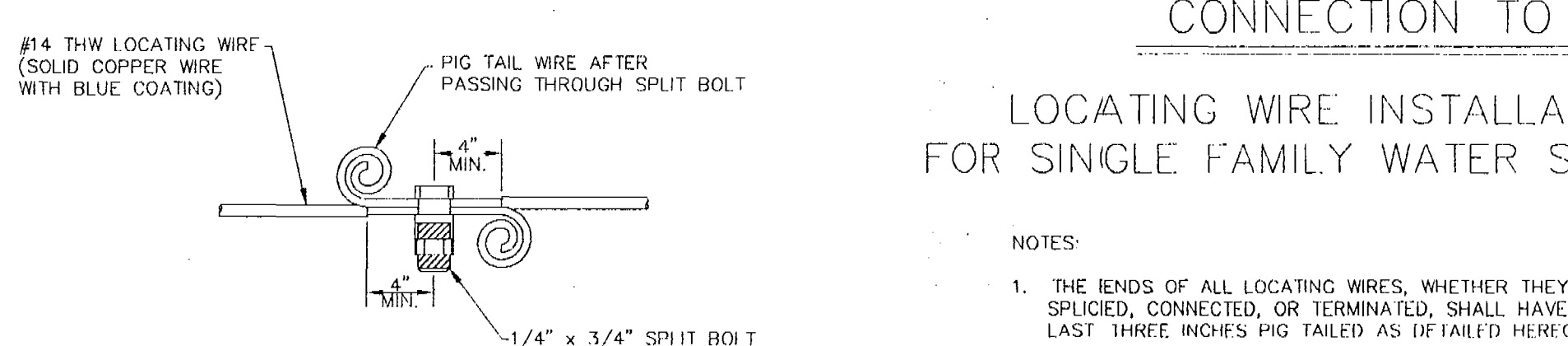


IRRIGATION SERVICE CONNECTION

NOT TO SCALE
(NOTE: METERS TO BE INSTALLED BY CITY OF CLERMONT.)

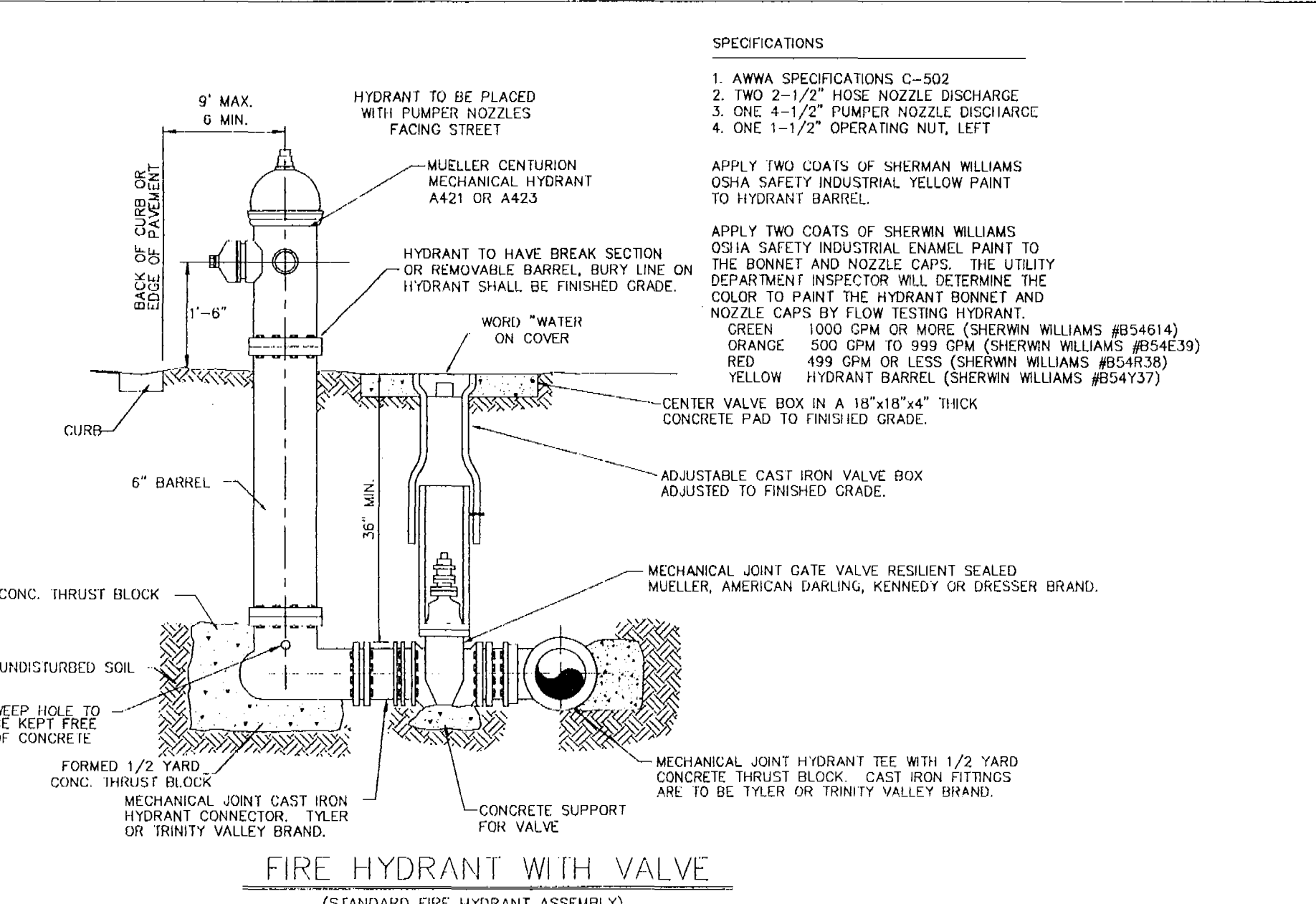


SERVICE AND METER



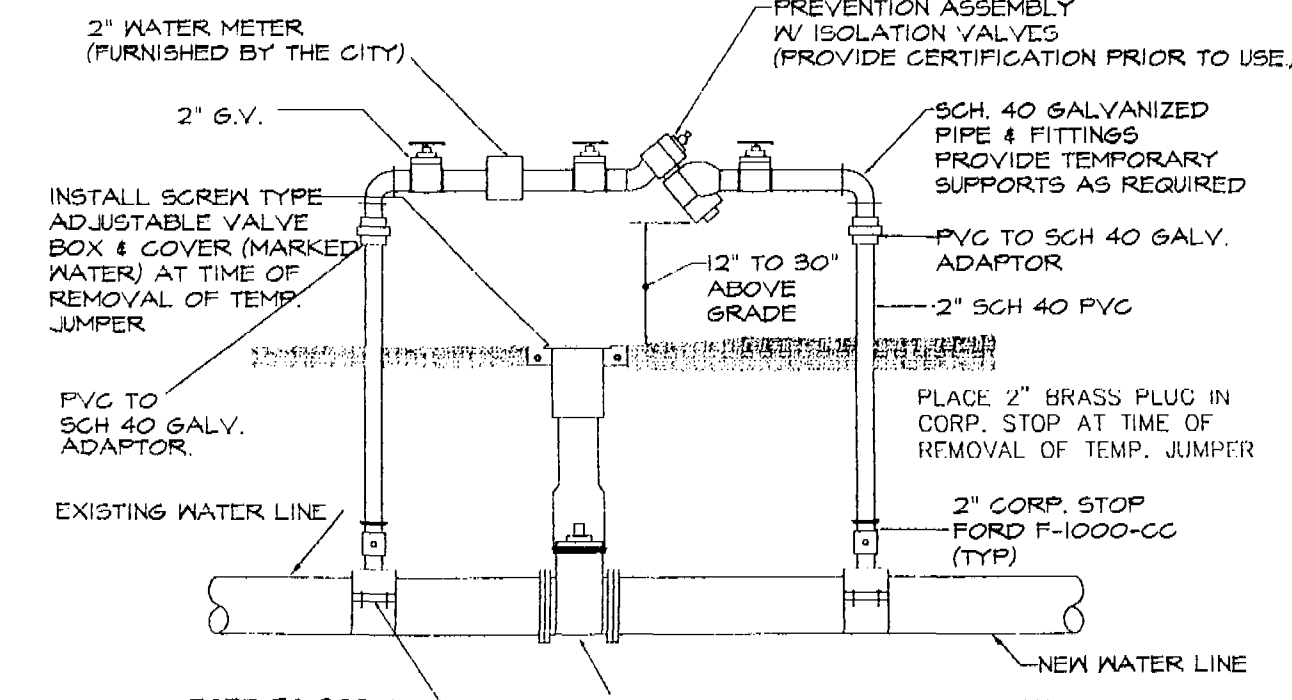
LOCATING WIRE INSTALLATION FOR SINGLE FAMILY WATER SERVICES

- NOTES:
- THE ENDS OF ALL LOCATING WIRES, WHETHER THEY ARE SPLICED, CONNECTED, OR TERMINATED, SHALL HAVE THE LAST THREE INCHES PIG TAILED AS DETAILLED HEREON.
 - AFTER INSTALLATION OF THE LOCATING WIRE THE SYSTEM SHALL BE SUBJECT TO TESTING, PRIOR TO BACKFILL, IN ORDER TO ESTABLISH THAT THE SYSTEM IS FUNCTIONAL.



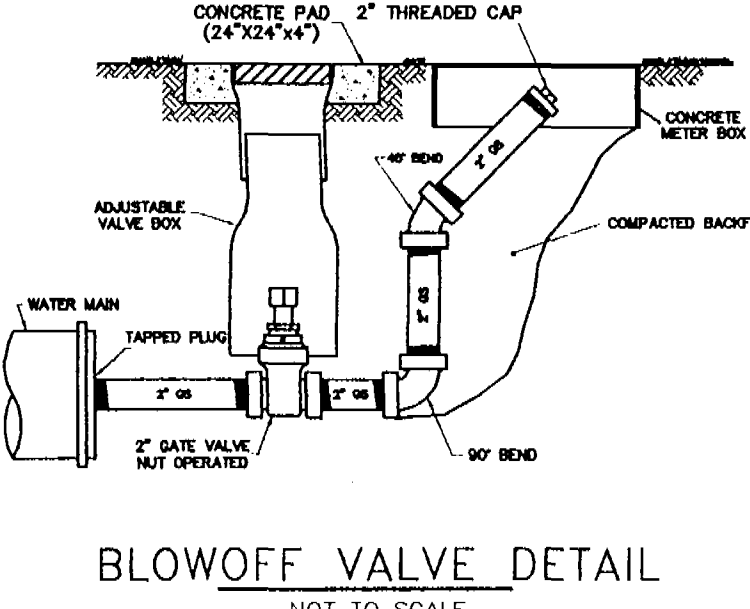
FIRE HYDRANT WITH VALVE (STANDARD FIRE HYDRANT ASSEMBLY)

- SPECIFICATIONS**
- AWWA SPECIFICATIONS C-502
 - TWO 2-1/2" HOSE NOZZLE DISCHARGE
 - ONE 4-1/2" PUMPER NOZZLE DISCHARGE
 - ONE 1-1/2" OPERATING NUT, LEFT
- APPLY TWO COATS OF SHERWIN WILLIAMS OSHA SAFETY INDUSTRIAL YELLOW PAINT TO HYDRANT BARREL.
- APPLY TWO COATS OF SHERWIN WILLIAMS OSHA SAFETY INDUSTRIAL ENAMEL PAINT TO THE BONNET AND NOZZLE CAPS. THE UTILITY DEPARTMENT INSPECTOR WILL DETERMINE THE COLOR TO PAINT THE HYDRANT BONNET AND NOZZLE CAPS BY FLOW TESTING HYDRANT.
- GREEN 1000 GPM OR MORE (SHERWIN WILLIAMS #B54614)
ORANGE 500 GPM TO 999 GPM (SHERWIN WILLIAMS #B54E39)
RED 499 GPM OR LESS (SHERWIN WILLIAMS #B54R38)
YELLOW HYDRANT BARREL (SHERWIN WILLIAMS #B54Y37)



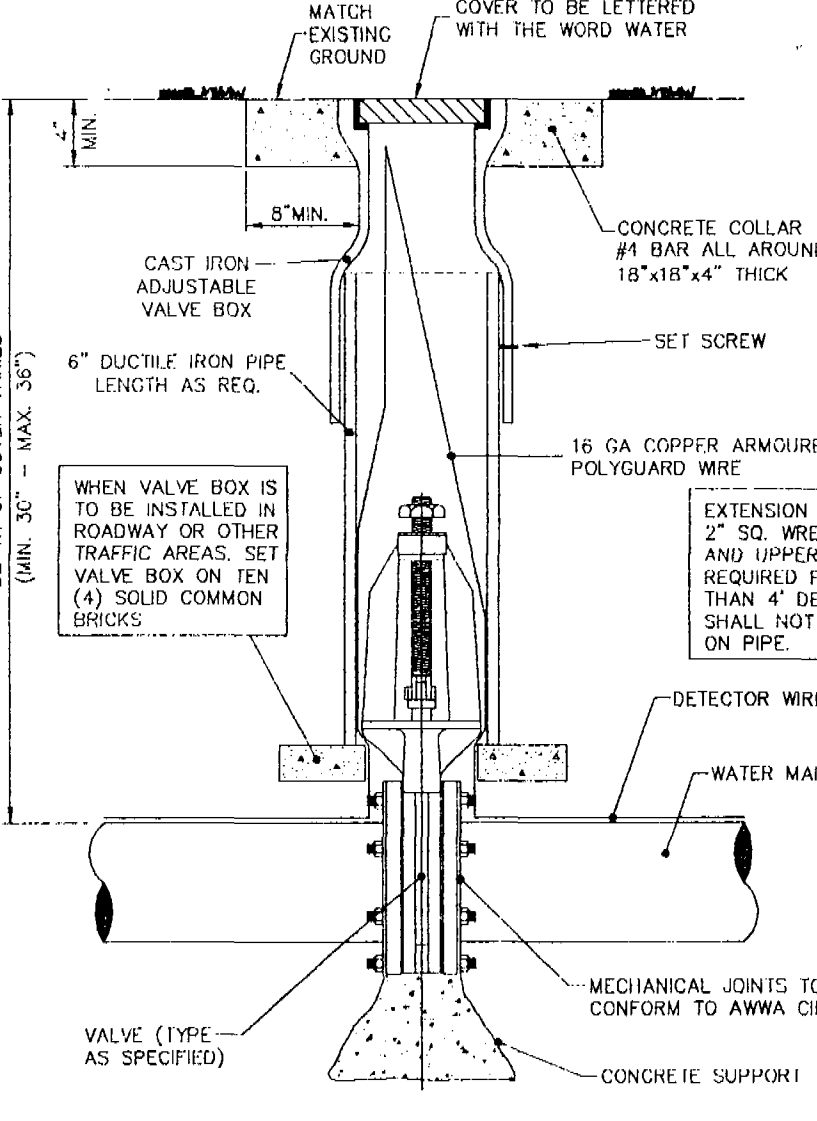
TEMPORARY JUMPER CONNECTION DETAIL

NOTE: LOCATION TO BE DETERMINED AT TIME OF PRECONSTRUCTION CONFERENCE W/ CITY.



BLOWOFF VALVE DETAIL

NOT TO SCALE



GATE VALVE & BOX

NOT TO SCALE

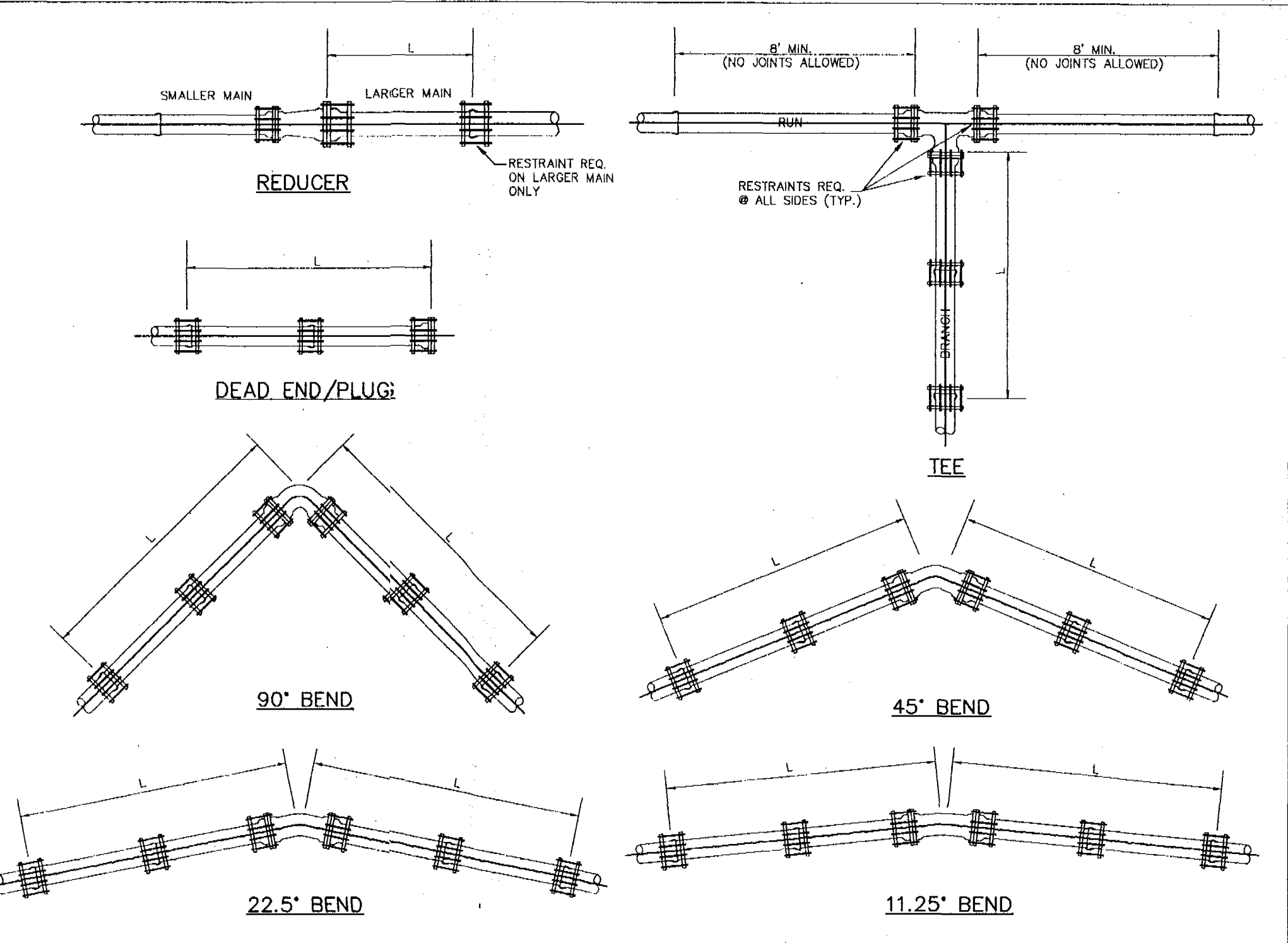
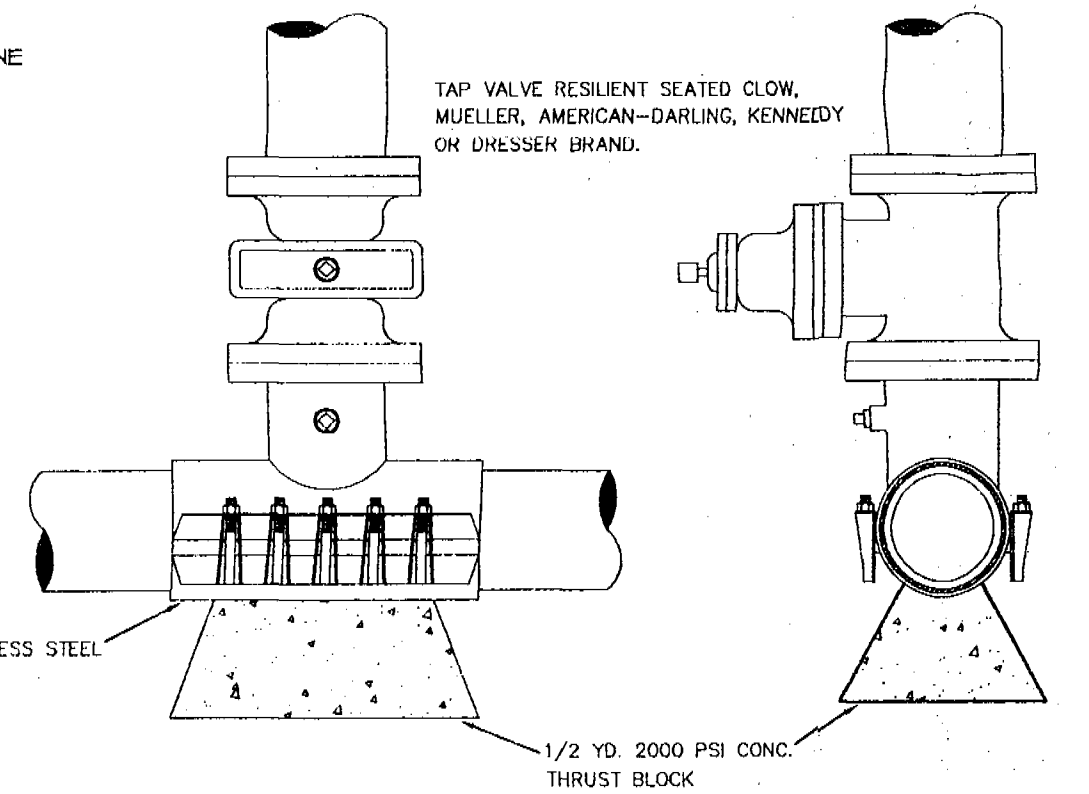


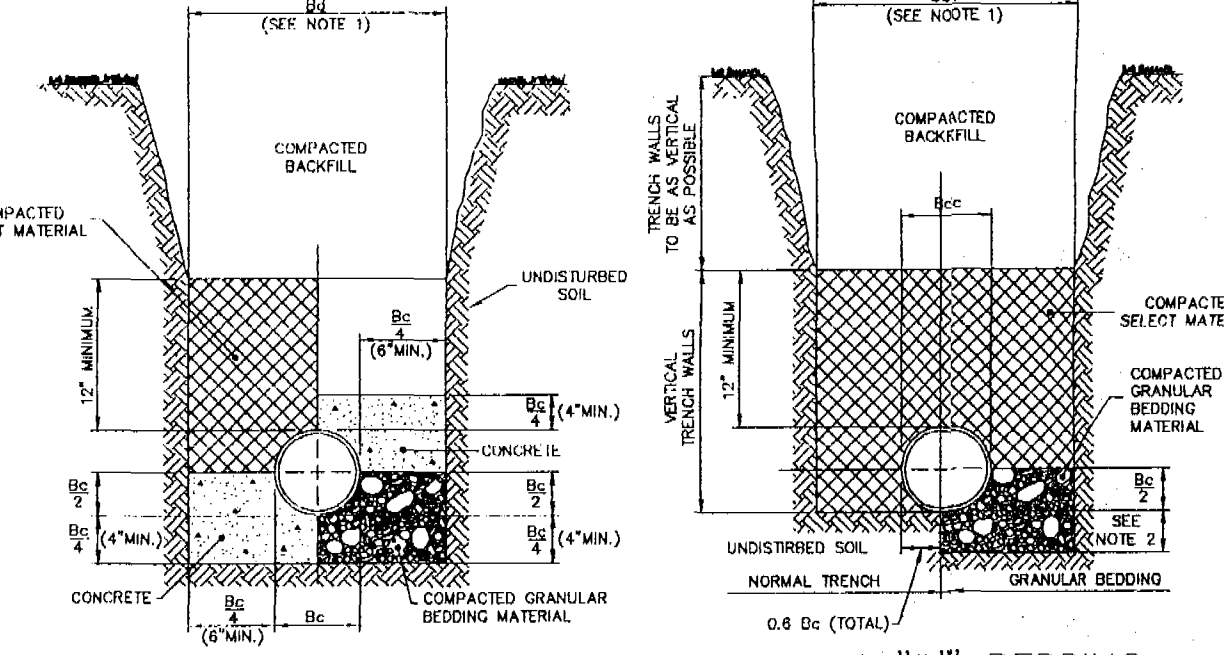
TABLE OF THRUST RESTRAINT LENGTHS

PIPE SIZE (inches)	90° BEND		45° BEND		22.5° BEND		11.25° BEND		TEES		DEAD END & PLUG		REDUCER	
	DUCTILE IRON (L)	P.V.C. (L)	DUCTILE IRON (L)	P.V.C. (L)	DUCTILE IRON (L)	P.V.C. (L)	DUCTILE IRON (L)	P.V.C. (L)	DUCTILE IRON (L)	P.V.C. (L)	DUCTILE IRON (L)	P.V.C. (L)	PIPE SIZES	DUCTILE IRON (L)
4	20'	16'	8'	7'	4'	3'	2'	2'	15'	10'	45'	28'	6"x4"	21'
6	28'	22'	12'	9'	6'	4'	3'	2'	33'	21'	63'	40'	8"x6"	22'
8	36'	29'	15'	12'	7'	6'	4'	3'	52'	33'	82'	52'	10"x8"	21'
10	43'	34'	18'	14'	9'	7'	4'	3'	68'	43'	98'	62'	12"x10"	21'
12	50'	40'	21'	17'	10'	8'	5'	4'	85'	53'	116'	73'	16"x12"	40'
16	63'	51'	26'	21'	13'	10'	6'	5'	116'	73'	148'	93'		



WET TAP SLEEVE & TAP VALVE

NOT TO SCALE



CLASS "A" BEDDING SPECIAL CONDITIONS

CLASS "B" BEDDING NORMAL CONDITIONS

- NOTES: FOR BEDDING AND TRENCHING
- Dimension Bc = Pipe O.D.
Dimension Bd = Trench Width at Top of Pipe
Maximum Bd = Bc + 30"
Minimum Bd = Maximum Dimension of Bolt + 8" (Unshelved trench)
 - Depth for removal for unstable material shall be as required to reach suitable foundation. For rock or other non-cushioning material, depth shall be 6" below bottom of utility.

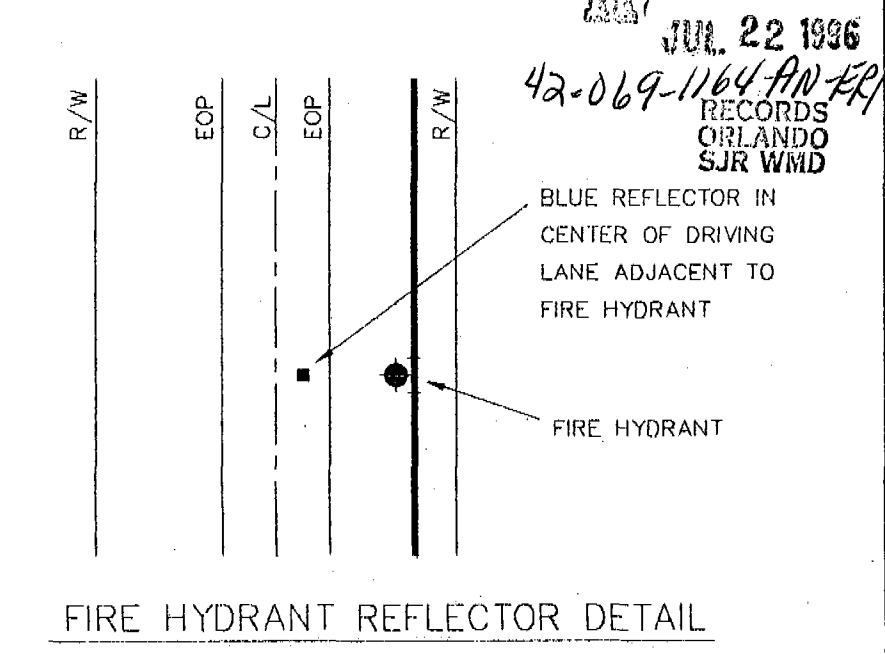
GENERAL WATER NOTES

- WATER SYSTEM COMPONENTS SHALL BE INSTALLED IN STRICT ACCORDANCE WITH ALL LOCAL CODES AND REGULATIONS, CLEANED, DISINFECTED AND BACTERIOLOGICALLY CLEARED FOR SERVICE IN ACCORDANCE WITH THE LATEST AWWA STANDARDS AND CHAPTER 62-555 FLORIDA ADMINISTRATIVE CODE.
 - ALL PIPING SHALL BEAR THE "NSF" SEAL FOR POTABLE WATER.
 - WATER MAINS SHALL BE PVC CONFORMING TO AWWA C-900, OR 18 FOR PIPE SIZES 4"-12". PIPES 14" OR LARGER SHALL BE AWWA C-905, OR 25. ALL COUPLINGS, CLEANING COMPOUNDS, SOLVENTS, LUBRICANTS, AND PIPE PREPARATION, FOR LAYING, SHALL BE IN ACCORDANCE WITH THE PIPE MANUFACTURERS LATEST RECOMMENDATIONS.
 - DEPTH OF WATER LINES TO BE .36" BELOW FINISHED GRADE.
 - WATER MAINS TO BE LOCATED 5' FROM BACK OF CURB OR EDGE OF PAVEMENT UNLESS OTHERWISE NOTED.
 - WHERE WATER AND SEWER MAINS CROSS WITH LESS THAN 18" VERTICAL CLEARANCE, THE SEWER WILL BE 20" OF EITHER CAST IRON PIPE OR CONCRETE ENCASED VITRIFIED CLAY OR P.V.C. PIPE, CENTERED ON THE POINT OF CROSSING. WHEN A WATER MAIN PARALLELS A SEWER MAIN, A SEPARATION OF AT LEAST 10' SHOULD BE MAINTAINED. IF 10' SEPARATION CANNOT BE MAINTAINED, THE WATER MAIN AND SEWER MAIN SHALL BE DUCTILE IRON PIPE, FOR THE PORTION OF THE WATER MAIN LESS THAN 10' FROM THE SEWER MAIN, OR INSTALLATION OF THE WATER MAIN IN A SEPARATE TRENCH, OR ON AN UNDISTURBED EARTH SHELF, AT LEAST 18" ABOVE THE CROWN OF THE SEWER MAIN.
- NOTE: MARK ALL POINTS WHERE WATER SERVICES CROSS CURB WITH A "W" MARK IN CONCRETE.

THRUST RESTRAINT DESIGN NOTES

- RESTRAINT JOINTS, FITTINGS, & VALVE REQUIREMENTS CALCULATED BY THE THRUST RESTRAINT DESIGN PROGRAM PROVIDED BY EBAA IRON SALES, INC.
- DATA BASED ON MAX. WATER PRESSURE OF 150 p.s.i., THE UNIFIED SOILS CLASSIFICATION SYSTEM (SOIL TYPE SP), THE PIPE BEDDED IN NATIVE SOIL w/ A MINIMUM OF 2.5' COMPACTED FILL OVER THE PIPE, AND USING A SAFETY FACTOR OF 1.5 FOR THE DATA.
- ALL FITTINGS & VALVES TO BE RESTRAINED WITH "MEGA-LUG" RESTRAINTS, & ALL BELL & SPIGOT JOINTS TO BE RESTRAINED WITH A RESTRAINING HARNESS FOR THE REQUIRED LENGTH OF RESTRAINED PIPE (L).

THRUST RESTRAINT DETAILS



FIRE HYDRANT REFLECTOR DETAIL

REVISIONS

DATE	REVISIONS
5-10-96	REVISED PER CITY OF CLERMONT COMMENTS
5-30-96	REVISED PER CLIENT
6-18-96	REVISED PER CITY OF CLERMONT COMMENTS
7-02-96	REVISED PER CITY OF CLERMONT COMMENTS

ENGINEERS
SURVEYORS
PLANNERS

BARBER BARLEY
AND ASSOCIATES, INC.

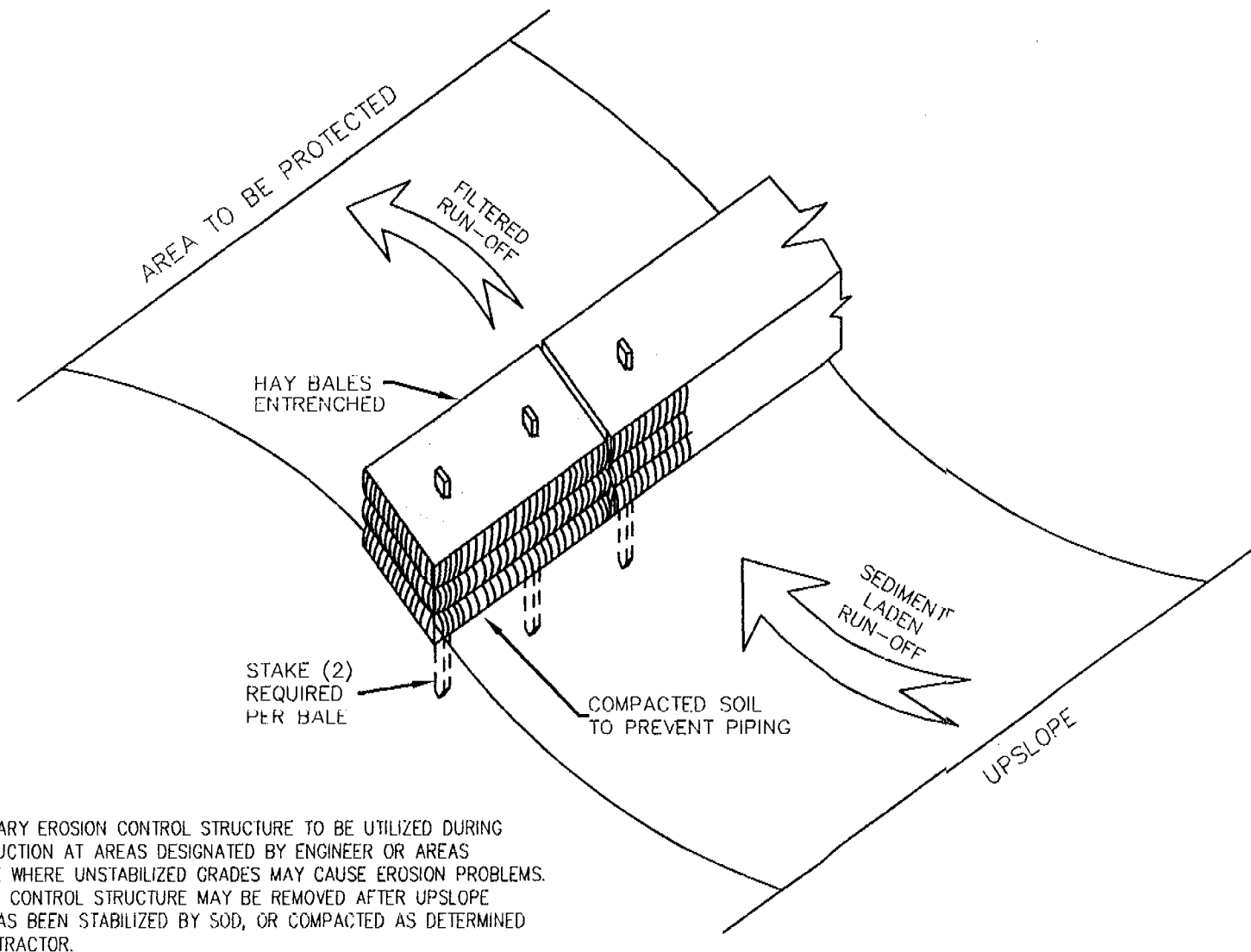
350 North Sinclair Avenue O Varies, Florida 32778 O (904) 343-8481

STRATEGIC TECHNOLOGIES INC.
TELECOMMUNICATIONS FACILITY
WATER DISTRIBUTION
DETAIL SHEET

DATE: 4-18-96
JOB NO. 941216.024
DWG. NO. W-DETAIL
F.B. PG.
DRAWN BY DLB
CHKD BY

SHT. 4 OF 7

JUL 18 1996



- NOTES:
- TEMPORARY EROSION CONTROL STRUCTURE TO BE UTILIZED DURING CONSTRUCTION AT AREAS DESIGNATED BY ENGINEER OR AREAS ON-SITE WHERE UNSTABILIZED GRADES MAY CAUSE EROSION PROBLEMS. EROSION CONTROL STRUCTURE MAY BE REMOVED AFTER UP-SLOPE AREA HAS BEEN STABILIZED BY SOD, OR COMPACTED AS DETERMINED BY CONTRACTOR.
 - ALTERNATE EROSION CONTROL STRUCTURE:
WOVEN FILTER FABRIC SILT FENCE IN ACCORDANCE WITH F.D.O.T. INDEX #102. FILTER FABRIC IN ACCORDANCE WITH SECTION 985 OF THE F.D.O.T. STANDARD SPECIFICATIONS.

EROSION CONTROL STRUCTURE
NOT TO SCALE

THE FOLLOWING LIST REPRESENTS A BASIC EROSION AND SEDIMENT CONTROL PROGRAM WHICH IS TO BE IMPLEMENTED TO HELP PREVENT OFF-SITE SEDIMENTATION DURING AND AFTER CONSTRUCTION OF THE PROJECT.

PERMANENT EROSION AND SEDIMENT CONTROL MEASURES SHALL BE INSTALLED AT THE EARLIEST PRACTICAL TIME CONSISTENT WITH GOOD CONSTRUCTION PRACTICES. ONE OF THE FIRST CONSTRUCTION ACTIVITIES SHOULD BE THE PLACEMENT OF PERMANENT AND TEMPORARY EROSION AND SEDIMENT CONTROL MEASURES AROUND THE PERIMETER OF THE PROJECT OR THE INITIAL WORK AREA TO PROTECT THE PROJECT, ADJACENT PROPERTIES AND WATER RESOURCES.

TEMPORARY EROSION AND SEDIMENT CONTROL MEASURES SHALL BE COORDINATED WITH PERMANENT MEASURES TO ASSURE ECONOMIC, EFFECTIVE AND CONTINUOUS CONTROL THROUGHOUT THE CONSTRUCTION PHASE. TEMPORARY MEASURES SHALL NOT BE CONSTRUCTED FOR EXPEDIENCY IN LIEU OF PERMANENT MEASURES.

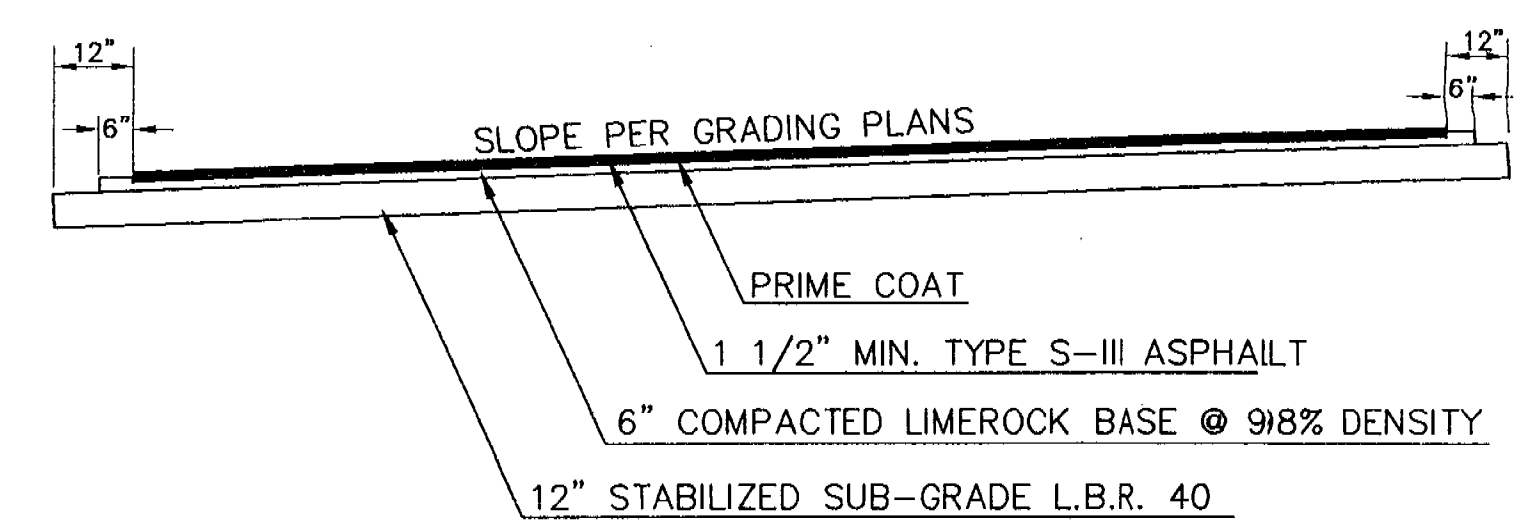
EROSION AND SEDIMENT CONTROL MEASURES SHALL BE ADEQUATELY MAINTAINED TO PERFORM THEIR INTENDED FUNCTION DURING CONSTRUCTION OF THE PROJECT.

NECESSARY REPAIRS TO BARRIERS OR REPLACEMENT OF BARRIERS SHALL BE ACCOMPLISHED PROMPTLY.

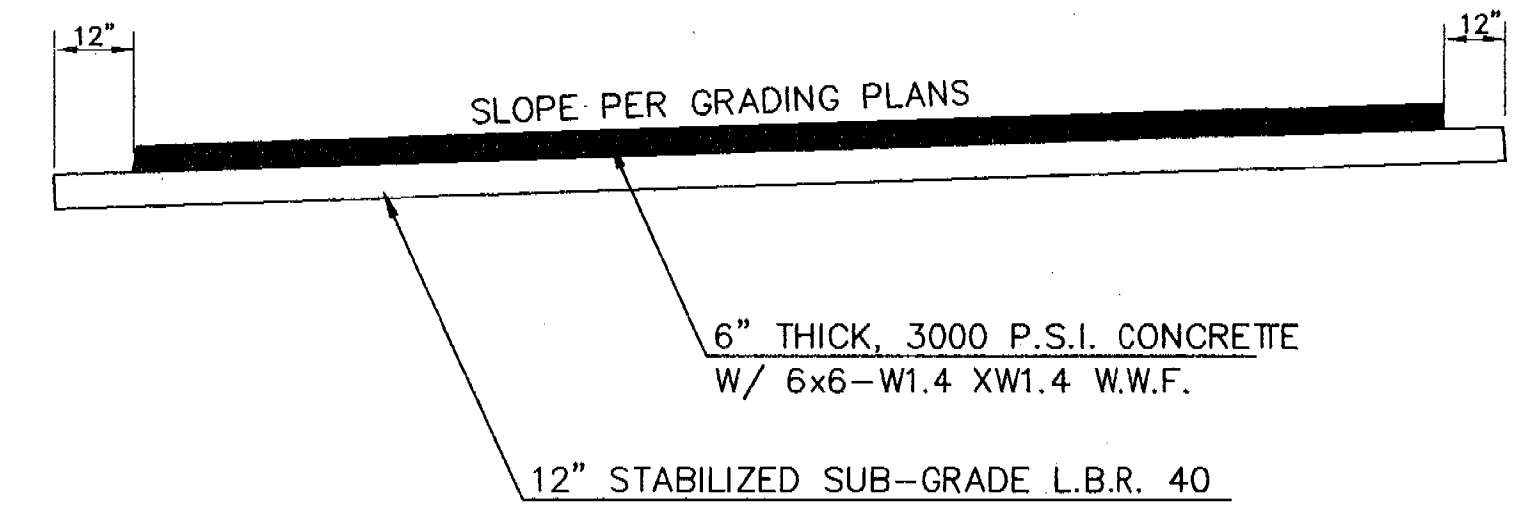
SEDIMENT DEPOSITS SHOULD BE REMOVED AFTER EACH RAINFALL. THEY MUST BE REMOVED WHEN THE LEVEL OF DEPOSITION REACHED APPROXIMATELY ONE-HALF THE HEIGHT OF THE BARRIER.

MATERIAL FROM SEDIMENT TRAPS SHALL NOT BE STOCKPILED OR DISPOSED OF IN A MANNER WHICH MAKES THEM REARLY SUSCEPTIBLE TO BEING WASHED INTO ANY WATERCOURSE BY RUNOFF OR HIGH WATER.

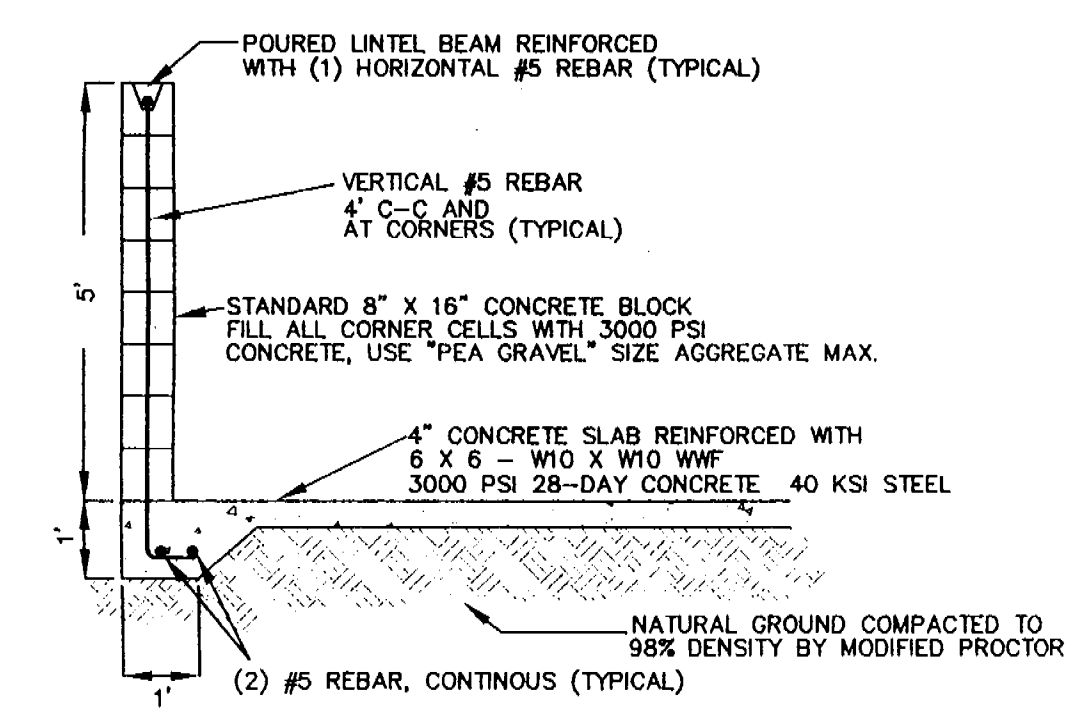
ANY SEDIMENT DEPOSITS REMAINING IN PLACE AFTER THE BARRIERS ARE NO LONGER REQUIRED SHALL BE DRESSED TO CONFORM TO THE EXISTING GRADE, PREPARED AND SEED.



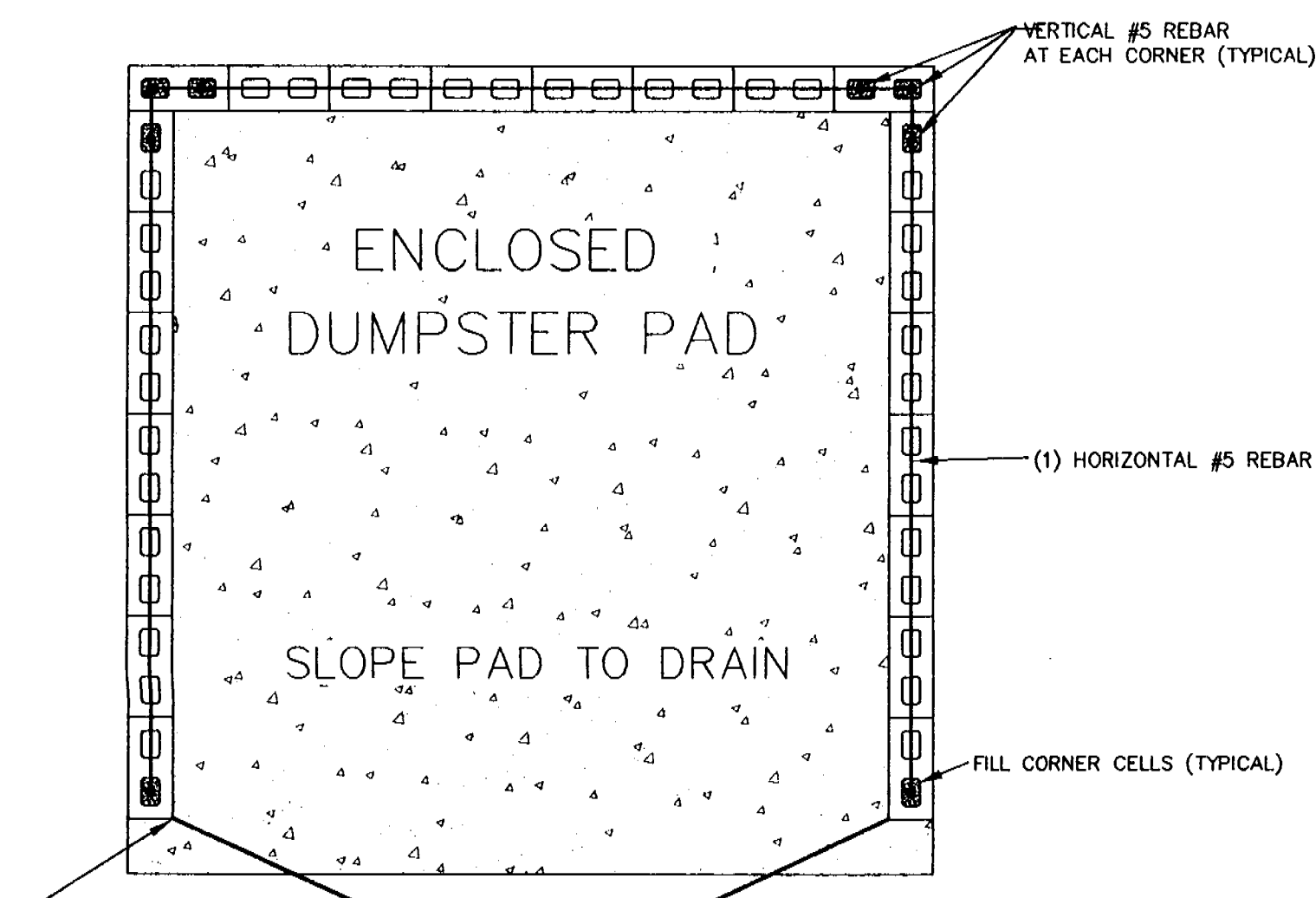
ASPHALT PAVEMENT CROSS-SECTION



ALTERNATIVE CONCRETE PAVEMENT CROSS-SECTION



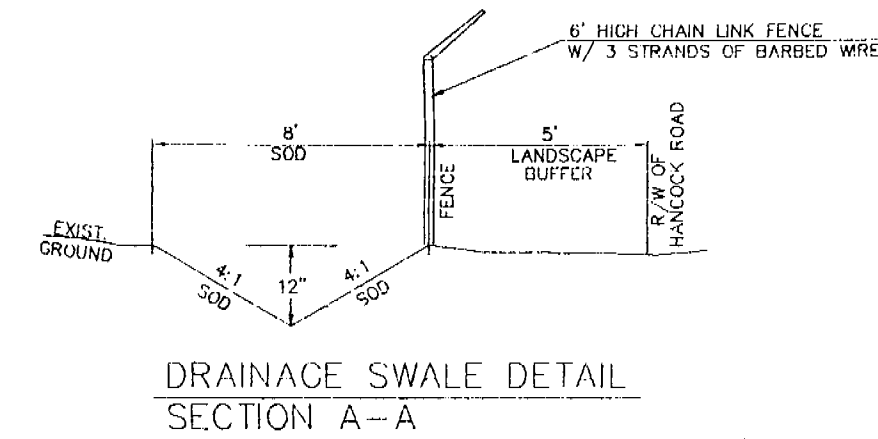
SECTION VIEW



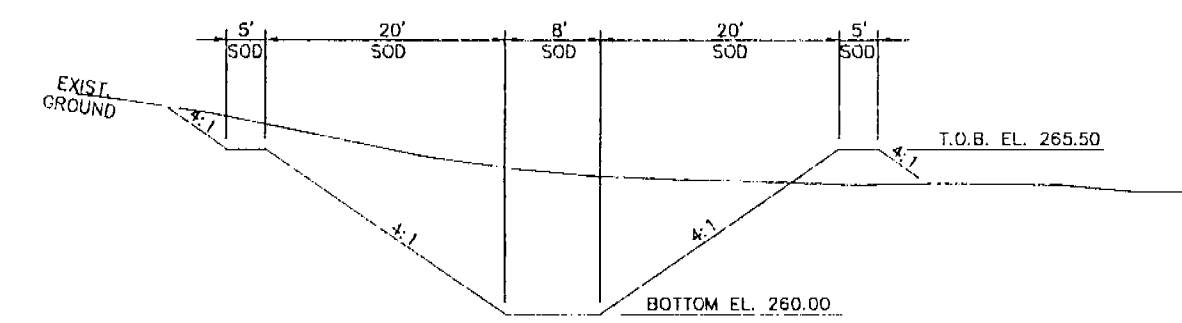
PLAN VIEW (NOT TO SCALE)

SECURE HEAVY DUTY GATE HINGES TO BLOCK WALL WITH 1/2" ANCHOR OR WEDGE BOLTS

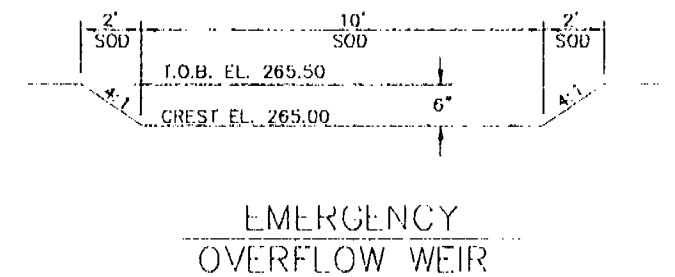
WOOD DOORS WITH STEEL FRAMES



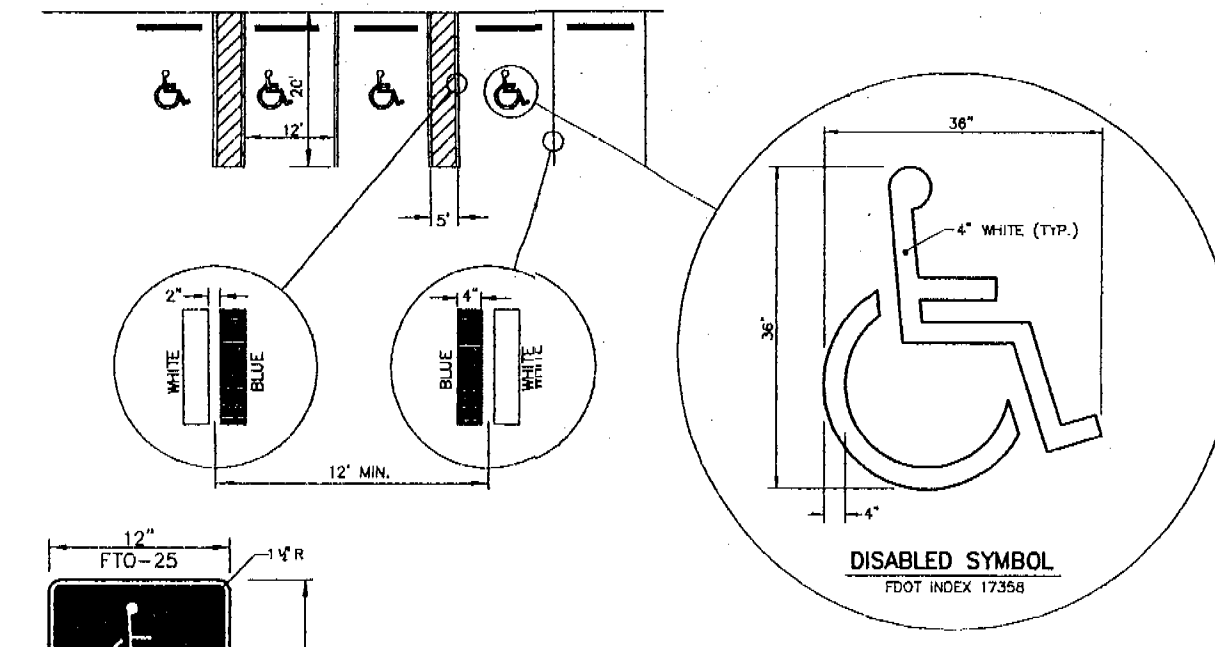
DRAINAGE SWALE DETAIL SECTION A-A



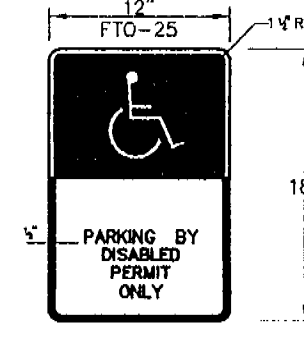
RETENTION POND SECTION B-B



EMERGENCY OVERFLOW WEIR



HANDICAP PARKING STRIPING FOR SINGLE SPACES

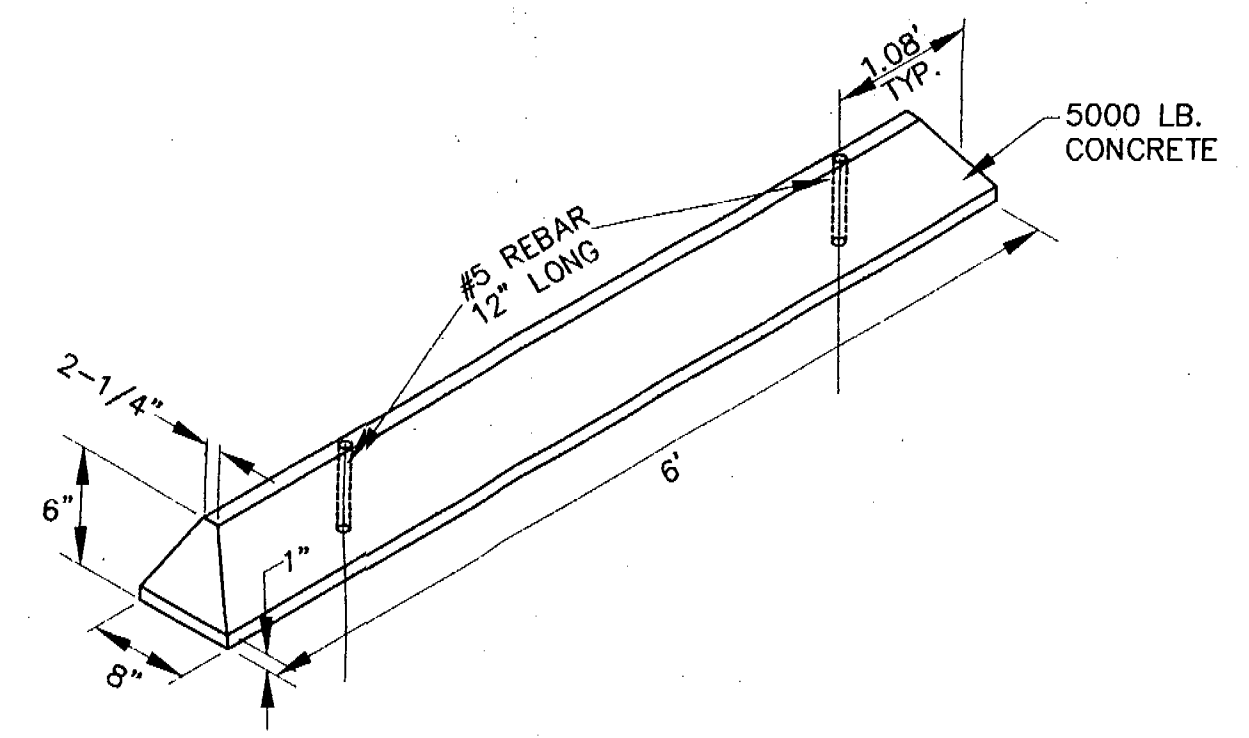


NOTES:

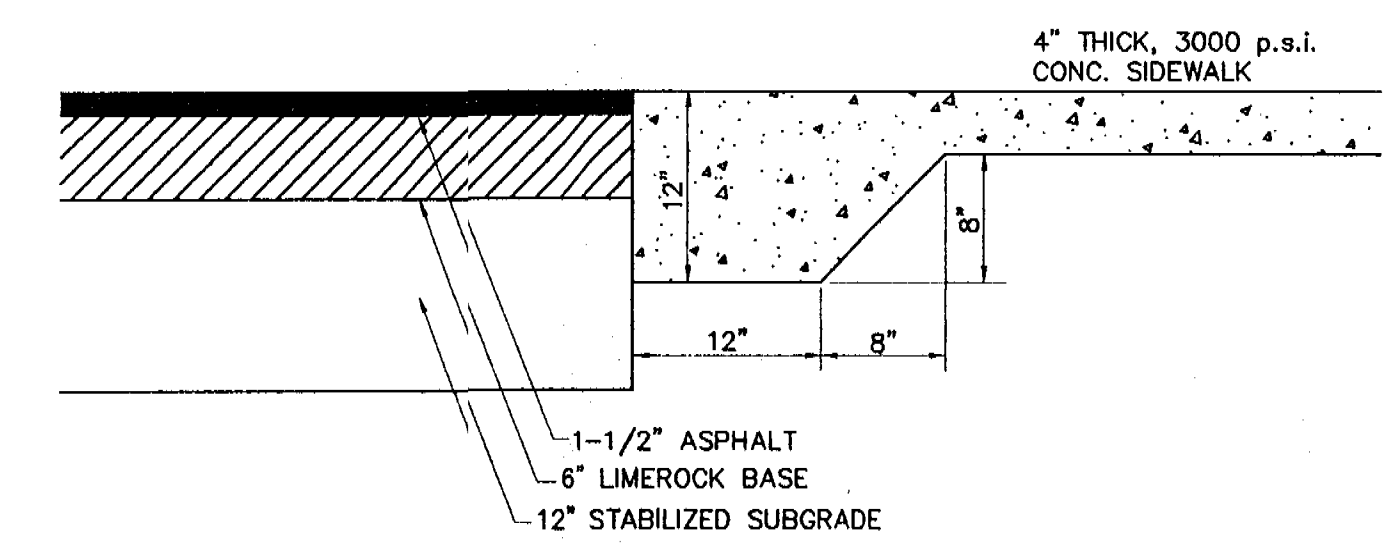
- EACH SUCH PARKING SPACE SHALL BE CONSPICUOUSLY OUTLINED IN BLUE PAINT, AND SHALL BE POSTED AND MAINTAINED WITH A PERMANENT, ABOVE GRADE SIGN BEARING THE INTERNATIONAL SYMBOL OF ACCESSIBILITY, OR THE CAPTION "PARKING BY DISABLED PERMIT ONLY," OR BEARING BOTH SUCH SYMBOL AND CAPTION. SUCH SIGNS SHALL NOT BE OCCUPIED BY A VEHICLE PARKED IN THE SPACE. ALL HANDICAPPED PARKING SPACES MUST BE SIGNED AND MARKED IN ACCORDANCE WITH THE STANDARDS ADOPTED BY THE DEPARTMENT OF TRANSPORTATION, THE CITY OF ALAMOGITO SPRINGS DISCOURAGES VARIATIONS FROM THE STANDARD.
- FL DOT RECOMMENDS MEASURING PARKING SPACE WIDTH FROM CENTER TO CENTER BETWEEN BLUE AND WHITE STRIPES.

NOTE: (HANDICAP SIGN ONLY)

- ALL LETTERS SHALL BE BLACK AND 1" IN HEIGHT. LETTERS ARE TO BE SERIES "B" OR "C", PER MUTCD.
- TOP PORTION OF SIGN SHALL HAVE REFLECTORIZED (ENGINEERING GRADE) BLUE BACKGROUND WITH WHITE REFLECTORIZED LEGEND AND BORDER.
- BOTTOM PORTION OF SIGN SHALL HAVE A REFLECTORIZED (ENGINEERING GRADE) WHITE BACKGROUND WITH BLACK BORDER.
- ONE SIGN REQUIRED FOR EACH PARKING SPACE.
- HEIGHT OF SIGN SHALL BE IN ACCORDANCE WITH SECTION 24-23 OF THE MANUAL ON UNIFORMED TRAFFIC CONTROL DEVICES (MUTCD)



PRECAST CONC. WHEEL STOP



FLUSH SIDEWALK w/ THICKENED EDGE DETAIL

RECORDED
JUL 22 1996
RECORDS
ORLANDO
SJK WMD

DATE	REVISIONS	REVISOR	REVISIONS
5-10-96	REVISED PER CITY OF CLERMONT COMMENTS		
5-30-96	REVISED PER CLIENT		
6-18-96	REVISED PER CITY OF CLERMONT COMMENTS		

ENGINEERS
SURVEYORS
PLANNERS

FARNER BARBLEY
AND ASSOCIATES, INC.

350 North Shaddox Avenue • Tallahassee, Florida 32378 • (904) 343-8461

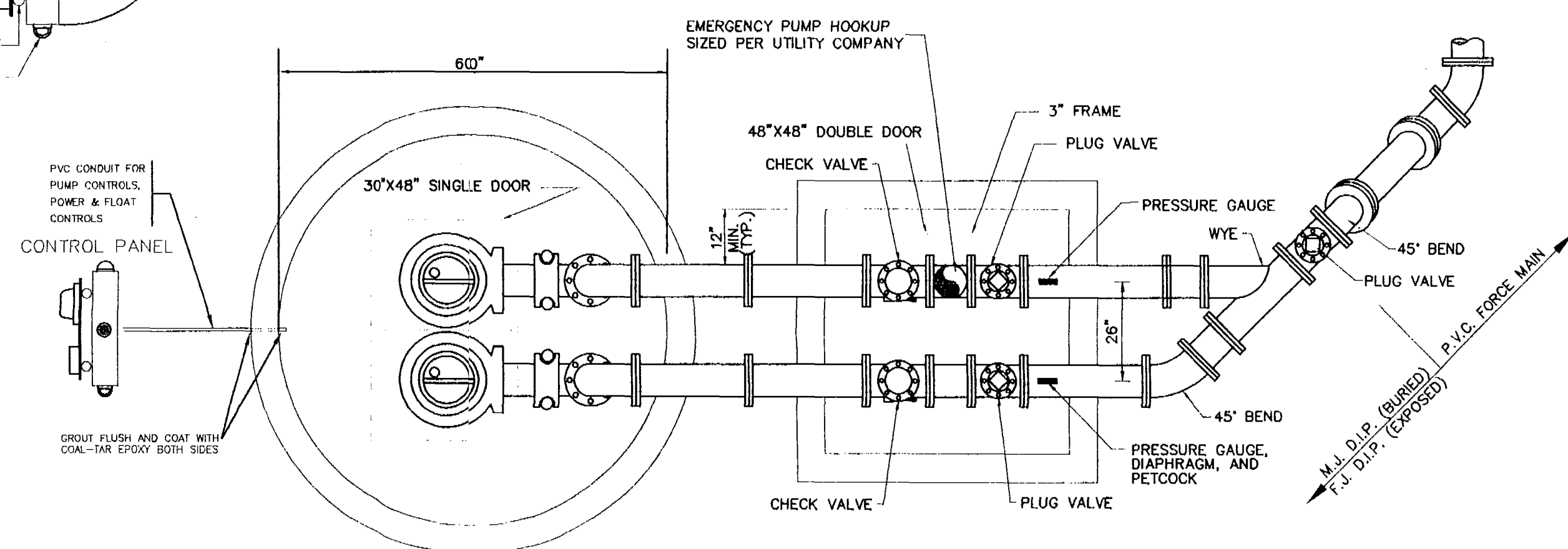
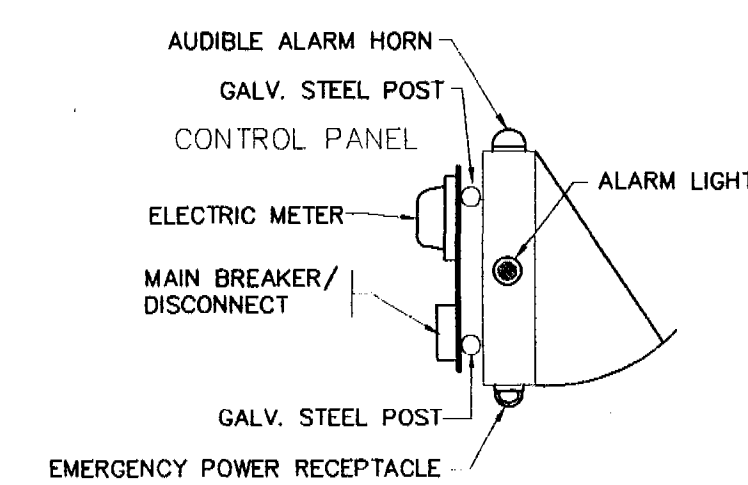
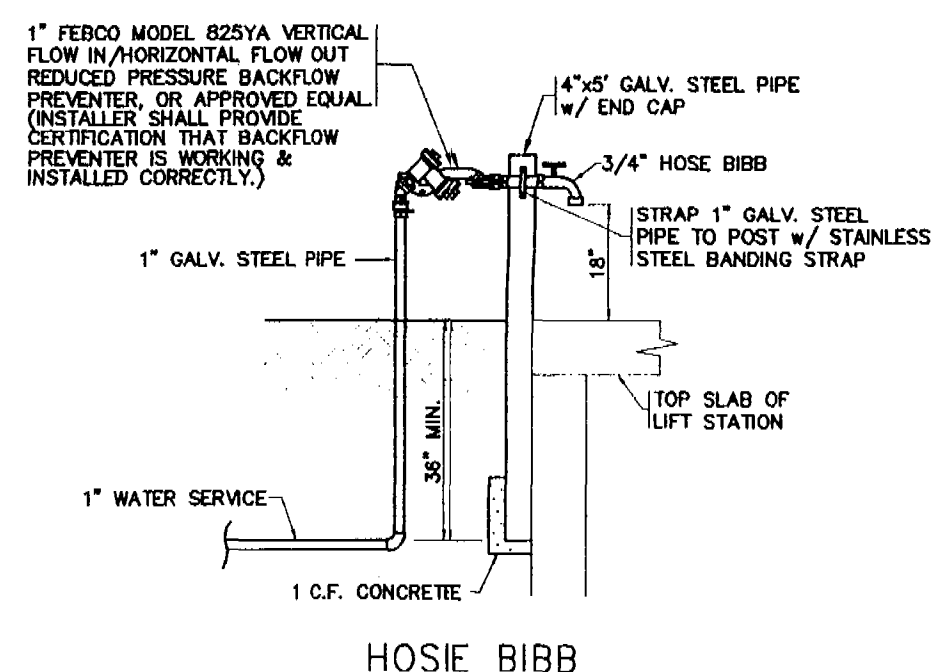
**STRATEGIC TECHNOLOGIES INC.
TELECOMMUNICATIONS FACILITY
PAVING AND DRAINAGE
DETAILS**

DATE 4-18-96
JOB NO. 941216.024
DWG. NO. DETAILS
F.B. PG.
DRAWN BY MTF
CHKD BY

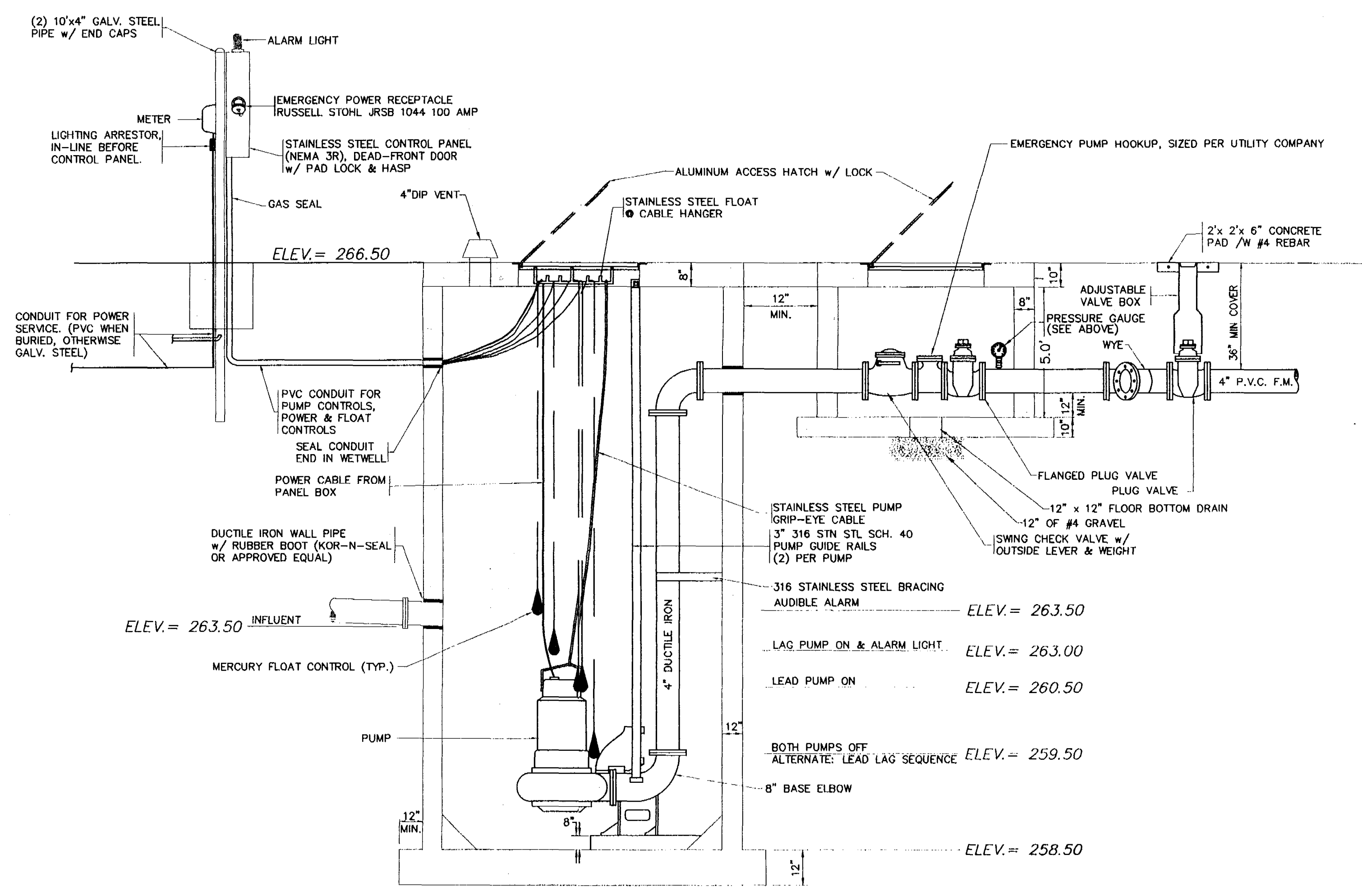
SHT. 5 OF 7

JUL 18 1996

DATA	
WETWELL INSIDE DIA.	60 IN.
HYDROMATIC SUBMERSIBLE PUMPS	
MODEL NUMBER	S4NRC
IMPELLER	5.9" R.P.M. 1750
PUMP SIZE	4" HORSE POWER 3
G.P.M.	90 T.D.H. 25'
ELECTRICAL REQUIREMENTS 230	
3 PHASE	



- NOTES:
1. ALL PIPE CONNECTIONS TO WET WELL SHALL BE D.I.P. W/ KOR-N-SEAL BOOTS.
 2. FINISH GRADE SHALL BE 6" BELOW WET WELL AND VALVE VAULT TOP SLAB ELEVATIONS INDICATED.
 3. 2 EACH - S.S. SOCKETS SHALL BE EMBEDDED IN THE LIFT STATION TOP SLAB. I.D. SIZE TO RECEIVE 3-1/2" SCH. 80 S.S. PIPE (HALLIDAY PRODUCTS OR APPROVED EQUAL)



- NOTES:
1. WET WELL: SHALL BE PRECAST CONCRETE MEETING "STANDARD SPECIFICATIONS FOR PRECAST REINFORCED CONCRETE MANHOLE", A.S.T.M. C-478, LATEST REVISION. CONCRETE SHALL BE MADE WITH TYPE II ACID RESISTANT CEMENT AND SHALL ATTAIN A COMPRESSIVE STRENGTH OF 4000 p.s.i. AT 28 DAYS. JOINTS SHALL BE SEALED WITH RAM-NEK OR EQUAL FLEXIBLE SEALER CONFORMING TO FEDERAL SPECIFICATION SS-S-00210.
 2. PUMPS: SHALL BE HYDROMATIC (SUBMERSIBLE). PUMPS SHALL HAVE (2) 3" STAINLESS STEEL GUIDE RAILS PER PUMP, PER MANUFACTURER'S SPECIFICATIONS.
 3. LEVEL CONTROLS: SHALL BE ROTO-FLOAT MERCURY SWITCH LIQUID LEVEL REGULATORS EACH PROVIDED WITH 40' CONTINUOUS ELECTRIC CABLE.
 4. WET WELL ACCESS COVER: SHALL HAVE CLEAR OPENING OF (1) 30" x 48" (MINIMUM) ACCESS AS MANUFACTURED BY HALLIDAY PRODUCTS OR APPROVED EQUAL. ACCESS FRAME AND COVER SHALL HAVE A 1/4" THICK ONE-PIECE, MILL FINISH, EXTRUDED ALUMINUM FRAME, INCORPORATING A CONTINUOUS CONCRETE ANCHOR. DOOR PANEL(S) SHALL BE 1/4" ALUMINUM DIAMOND PLATE, REINFORCED TO WITHSTAND A LIVE LOAD OF 300 psf. DOOR(S) SHALL OPEN TO 90° AND AUTOMATICALLY LOCK WITH STAINLESS STEEL HOLD OPEN ARMS WITH ALUMINUM RELEASE HANDLES. DOOR(S) SHALL CLOSE FLUSH WITH THE FRAME. UNIT SHALL LOCK WITH A NONCORROSIVE LOCKING BAR. FRAME SHALL SUPPORT GUIDE RAILS AND CABLE HOLDER FOR ELECTRICAL WIRING. ALL ACCESS FRAME, COVER, AND HARDWARE SHALL BE CONSTRUCTED OF STAINLESS STEEL. ALL SURFACES IN CONTACT WITH CONCRETE SHALL HAVE A SHOP COAT OF ZINC CHROMIUM PRIMER, APPROVED ALKALI RESISTANT PAINT OR APPROVED PROTECTIVE COATING. DOUBLE DOOR ACCESS COVERS SHALL HAVE REMOVABLE CENTER BAR SUPPORT. COVER MUST BE COMPATIBLE WITH PUMP. ALL STAINLESS STEEL SPECIFIED SHALL BE 1316 THROUGHOUT.
 5. VALVE VAULT ACCESS COVER: SHALL HAVE CLEAR OPENING OF (2) 24" x 48" (MINIMUM) ACCESS AS MANUFACTURED BY HALLIDAY PRODUCTS OR APPROVED EQUAL. ACCESS FRAME AND COVER SHALL HAVE A 1/4" THICK ONE-PIECE, MILL FINISH, EXTRUDED ALUMINUM FRAME, INCORPORATING A CONTINUOUS CONCRETE ANCHOR. DOOR PANEL(S) SHALL BE 1/4" ALUMINUM DIAMOND PLATE, REINFORCED TO WITHSTAND A LIVE LOAD OF 300 psf. DOOR(S) SHALL OPEN TO 90° AND AUTOMATICALLY LOCK WITH STAINLESS STEEL HOLD OPEN ARMS WITH ALUMINUM RELEASE HANDLES. DOOR(S) SHALL CLOSE FLUSH WITH THE FRAME. UNIT SHALL LOCK WITH A NONCORROSIVE LOCKING BAR. FRAME SHALL SUPPORT GUIDE RAILS AND CABLE HOLDER FOR ELECTRICAL WIRING. ALL ACCESS FRAME, COVER, AND HARDWARE SHALL BE CONSTRUCTED OF STAINLESS STEEL. ALL SURFACES IN CONTACT WITH CONCRETE SHALL HAVE A SHOP COAT OF ZINC CHROMIUM PRIMER, APPROVED ALKALI RESISTANT PAINT OR APPROVED PROTECTIVE COATING. DOUBLE DOOR ACCESS COVERS SHALL HAVE REMOVABLE CENTER BAR SUPPORT. COVER MUST BE COMPATIBLE WITH PUMP.
 6. ELECTRICAL SERVICE ENTRANCE: PROVIDE METER SOCKET AND MAIN DISCONNECT MEETING APPLICABLE ELECTRIC CODES AND REQUIREMENTS OF POWER COMPANY LIGHTNING AND VOLTAGE SURGE PROTECTION TO BE PROVIDED. ** COST FOR THE ELECTRICAL SERVICE SHALL BE THE RESPONSIBILITY OF THE CONTRACTOR. COORDINATION OF THE ELECTRICAL SERVICE SHALL BE THE SOLE RESPONSIBILITY OF THE CONTRACTOR.
 7. CONTROL PANEL: SHALL BE EQUIPPED WITH INDIVIDUAL DISCONNECTS, SOFT STARTERS, THREE POLE OVERLOAD PROTECTION, ELECTRICAL ALTERNATOR WITH TEST SWITCH, CONTROL RELAYS & FUSES AUTOMATIC TRANSFER TO NON-OPERATING PUMP, OVERLOAD RESETS, H.O.A. PUMP OPERATING SELECTOR SWITCH, ELAPSED TIME METERS FOR EACH PUMP, TERMINAL BOARD WITH CONNECTORS FOR HIGH LEVEL ALARMS, AMP METERS FOR EACH PUMP, FLASHING ALARM LIGHT, ALARM HORN, SEAL FAILURE INDICATORS, THERMAL SHUT DOWN, PHASE MONITOR, AND GROUND FAULT INTERRUPT WITH CIRCUIT BREAKER. ALL COMPONENTS SHALL BE HOUSED IN A 1316 STN. STL. PUMP CONTROL ENCLOSURE WITH STN. STL. DEAD FRONT INNER DOOR DESIGN. PROVISIONS FOR PADLOCKING PANEL SHALL BE PROVIDED.
 8. PAINT: INSIDE AND OUTSIDE OF WET WELL AND VALVE VAULT SHALL BE PAINTED WITH TWO COATS OF "POXTAR" OR EQUAL APPLIED AS PER MANUFACTURER'S RECOMMENDATIONS.
 9. VALVE VAULT: PRECAST CONCRETE 66" x 66" (MINIMUM) INSIDE DIMENSIONS.
 10. STEEL PLACED IN BOTTOM SLAB IS TO BE IDENTICAL TO THE TOP SLAB EXCEPT THAT DIAGONAL BARS AND OPENINGS ARE ELIMINATED, STEEL IS CONTINUOUS AND SLAB IS SOLID.
 11. CONTRACTOR TO CONFIRM SERVICE ARRANGEMENTS WITH POWER COMPANY BEFORE COMMENCING WORK. CONTRACTOR TO RUN UNDERGROUND WIRING TO NEAREST TRANSFORMER OR HAND HOLE.
 12. ALL FASTENERS ON FLANGES AND ETC. INSIDE WET WELL WILL BE STAINLESS STEEL.
 13. DIMENSIONS BETWEEN CENTERLINE OF PIPES ARE STANDARD FOR PIPE SIZES SPECIFIED.
 14. SHOP DRAWINGS OF ENTIRE INSTALLATION MUST BE APPROVED BY ENGINEER PRIOR TO PLACEMENT OF ORDER.
 15. PLUG VALVES SHALL BE SERIES 100, AS MANUFACTURED BY DEZURIK CORP., AND GLOW OR APPROVED EQUAL. VALVES SHALL BE CONSTRUCTED WITH RESILIENT FACED PLUGS ON BY-PASS LINES. VALVES SHALL BE BURIED WITH ACCESS THROUGH CAST IRON VALVE BOXES. VALVES SHALL HAVE A 2" OPERATION NUT. ONE(1) 5' LONG VALVE WRENCH SHALL BE PROVIDED TO THE CITY OF CLERMONT PER LIFT STATION.
 16. ALL EXPOSED AND EMBEDDED CONDUITS TO BE SCHEDULE 80 PVC.
 17. ALL EXPOSED METAL SHALL BE PAINTED WITH TWO (2) COATS OF EXTERIOR BLACK ENAMEL PAINT.
 18. ALL PIPING SHALL BE DUCTILE IRON CLASS 50 (FLANGED JOINT FOR EXPOSED PIPE & MECHANICAL JOINT FOR BURIED PIPE)
 19. PRESSURE GAUGES SHALL BE STAINLESS STEEL WITH STAINLESS STEEL DIAPHRAGM, LIQUID FILLED, 4" DIAMETER DIAL WITH 0-100 psf RANGE. GAUGES SHALL BE AS MANUFACTURED BY WKA, LOWER MOUNT, TYPE 233.50 AND DIAPHRAGMS SHALL BE AS MANUFACTURED BY HYETT, MODEL 43MCR-01 OR APPROVED EQUALS.
 20. CHECK VALVES SHALL BE MUELLER, KENNEDY, AMERICAN-DARLING, OR DRESSER WITH OUTSIDE LEVER AND WEIGHT.
 21. PADLOCKS FOR ACCESS COVERS AND CONTROL PANEL SHALL BE SUPPLIED BY THE CONTRACTOR. BOLTS IN LOCKING DEVICE SHALL BE 1316 STN. STL.

RECEIVED
JUL 22 1996
RECORDS
ORLANDO
SJR WND

STRATEGIC TECHNOLOGIES INC.
TELECOMMUNICATIONS FACILITY
LIFT STATION
DETAILS

DATE	7-09-96
JOB NO.	941216.024
DWG. NO.	P2LIFT
F.B.	PC
DRAWN BY	MTF
CHKD BY	

SHT. 6 OF 7

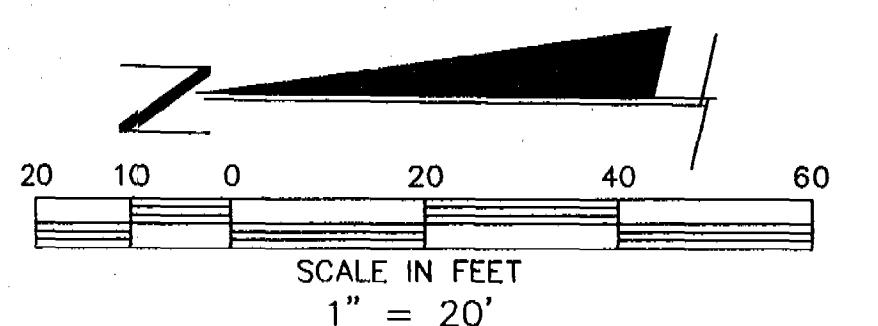
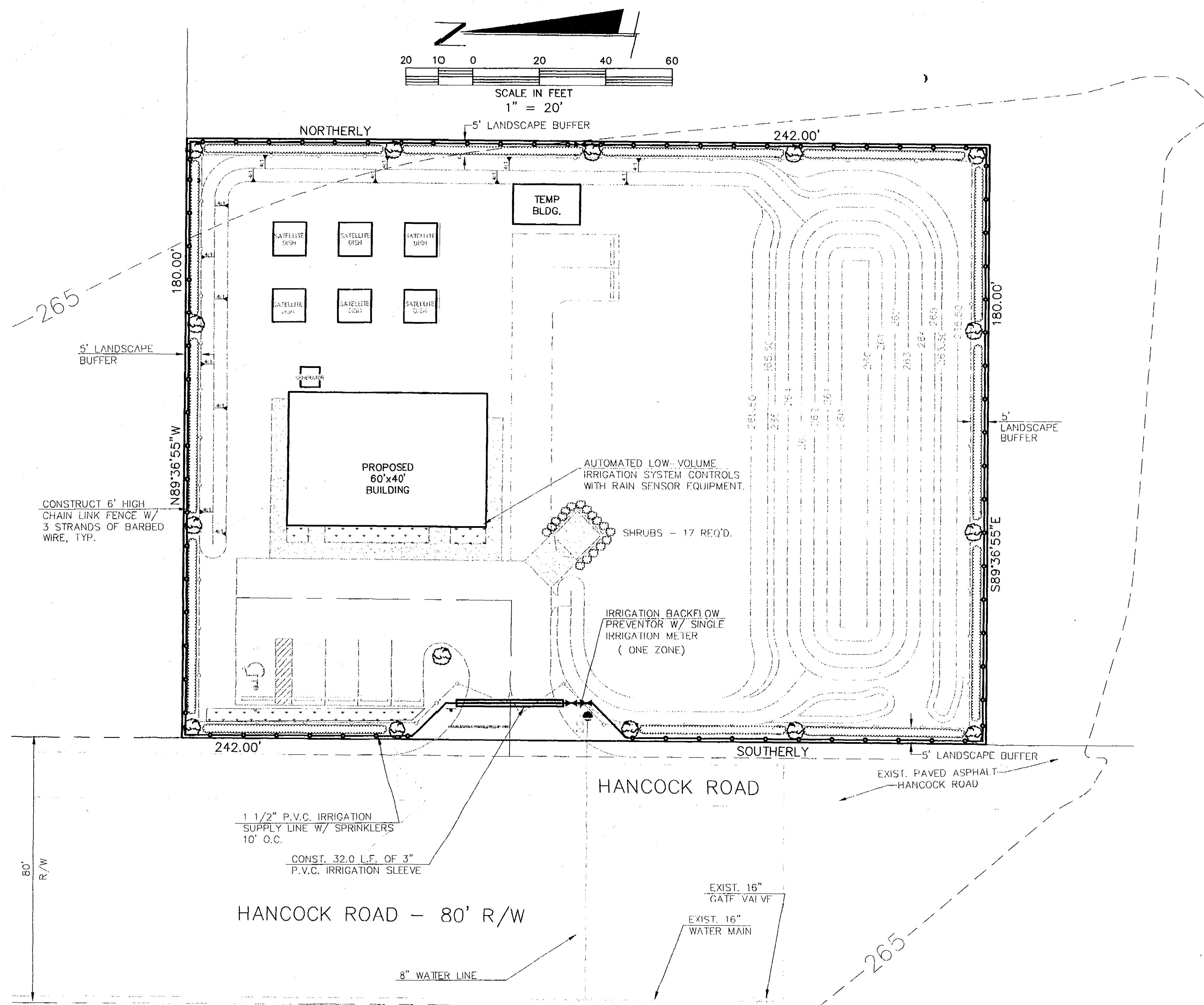
JUL 18 1996

ENGINEERS
SURVEYORS
PLANNERS

**FARNER
BARLEY**
AND ASSOCIATES, INC.

350 North Sinclair Avenue • Tallahassee, Florida 32378 • (904) 343-8461

REVISIONS	DATE



REQUIRED LANDSCAPING TABULATIONS

- 5 OFF STREET PARKING SPACES @ 10 SQ. FT. EACH = 50 SQ. FT. LANDSCAPING.
- 33 L.F. DUMPSTER ENCLOSURE @ 1 SHRUB PER 2 L.F. = 17 SHRUBS
- 179' LANDSCAPED STRIP ALONG R.O.W. @ 1 SHRUB PER 30" = 72 SHRUBS.
- 179' LANDSCAPED STRIP ALONG R.O.W. @ 1 TREE PER 50' = 4 TREES.
- 602' LANDSCAPED STRIP ALONG ADJACENT PROPERTY BOUNDARIES @ 1 TREE PER 75' = 9 TREES.
- 602' LANDSCAPED STRIP ALONG ADJACENT PROPERTY BOUNDARIES @ 1 SHRUB PER 30" = 241 SHRUBS.

NOTES:

1. TREES SHALL BE A MINIMUM 1-1/2" CALIPER AT 4-1/2' ABOVE THE EXISTING GRADE AND BE A MINIMUM OF 8' OVERALL HEIGHT IMMEDIATELY AFTER PLANTING.
2. ALL LANDSCAPING TREES TO BE FROM PREFERRED TREE LIST (TABLE 13-1), CITY OF CLERMONT L.D.R.'S, CHAPTER 13. ALL LANDSCAPING SHRUBS TO BE FROM PREFERRED SHRUB LIST (TABLE 13-2), CITY OF CLERMONT L.D.R.'S, CHAPTER 13.
3. ALL SHRUBS SHALL BE A MINIMUM OF 2' IN HEIGHT AND 30" ON CENTER WHEN MEASURED IMMEDIATELY AFTER PLANTING.
4. AUTOMATIC IRRIGATION SYSTEM SHALL BE INSTALLED IN ACCORDANCE WITH CHAPTER 13, CITY OF CLERMONT LAND DEVELOPMENT REGULATIONS.
5. REUSE WATER IS TO BE UTILIZED WHEN IT BECOMES AVAILABLE.
6. ALL INTERIOR AREAS NOT OTHERWISE LANDSCAPED SHALL BE PLANTED IN LAWN GRASS.
7. BACKFLOW PREVENTER TO BE FEBCO DOUBLECHECK MODEL 805Y OR APPROVED EQUAL.
8. RAIN SENSOR GAUGE TO BE MINI-CLIK II RAIN SENSOR AND MINI-CLIK TRELZE SENSOR, AS MANUFACTURED BY GLEN-HILTON PRODUCTS, INC., P.O. BOX 31614, RICHMOND, VA 23294. (804-755-1101)

LANDSCAPE LEGEND

- LAUREL OAK (QUERCUS HEMISPHERICA)
- RED-TOP (PHOTINIA FRASERII)
- LANDSCAPED AREA

RECEIVED
 JUL 22 1996
 42-069-114411-EP
 RECORDS
 ORLANDO
 SUI WMD

DATE	REVISIONS
5-29-96	RELOCATED SITE PER CLIENT
7-02-96	REVISE LANDSCAPING

FARNER BARLEY
 AND ASSOCIATES, INC.
 ENGINEERS SURVEYORS PLANNERS
 350 North Shadrach Avenue O Tavares, Florida 32778 O (804) 343-8481

**STRATEGIC TECHNOLOGIES INC.
 TELECOMMUNICATIONS CENTER
 LANDSCAPE PLAN**

DATE 6-3-96
 JOB NO. 941216.024
 DWG. NO. LANDSCAPE
 F.B. PG.
 DRAWN BY DLB
 CHKD BY

SHT. 7 OF 7

JUL 18 1996