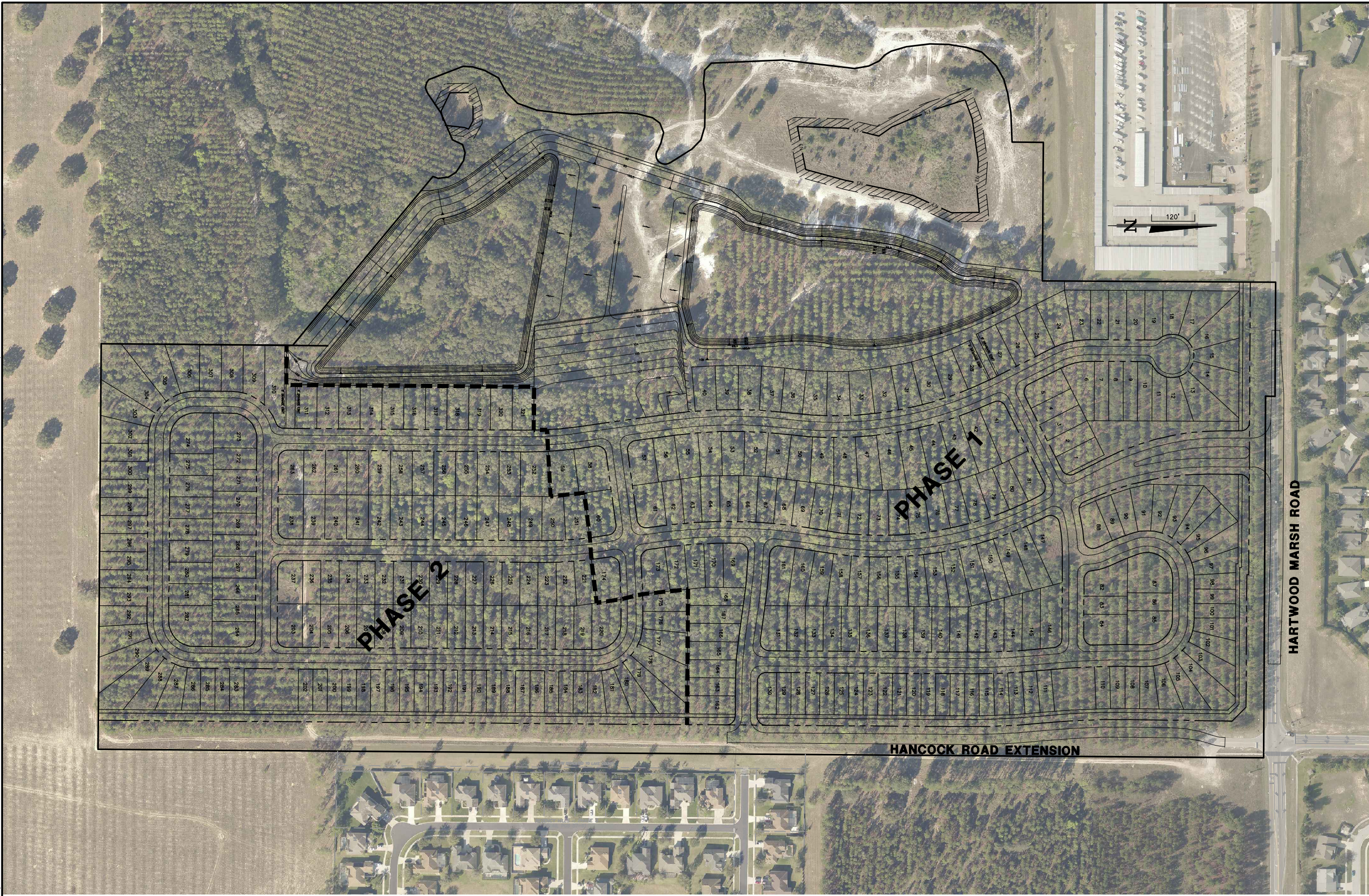


DONALD W. MCINTOSH ASSOCIATES, INC. RESERVES THE EXCLUSIVE COPYRIGHT AND PROPERTY RIGHTS TO THIS DRAWING WHICH MAY NOT BE REPRODUCED, CHANGED, OR COPIED IN ANY FORM OR MANNER, NOR CAN IT BE ASSIGNED TO ANY PARTY WITHOUT DONALD W. MCINTOSH ASSOCIATES, INC.'S WRITTEN CONSENT.



GENERAL NOTES:
 1. SEE NOTES, SPECIFICATIONS & LEGEND SHEET FOR ADDITIONAL INFORMATION.
 2. THE SCALE OF THIS DRAWING MAY HAVE CHANGED DUE TO REPRODUCTION.

DRAWING 26086-HARTAERIAL	HARTWOOD MARSH CITY OF CLERMONT, FLORIDA AERIAL	DONALD W. MCINTOSH ASSOCIATES, INC. PLANNERS ENGINEERS 2200 PARK AVENUE NORTH, WINTER PARK, FL 32789 407.644.4068 CERTIFICATE OF AUTHORIZATION NO. 08	JOHN T. TOWNSEND FLORIDA P.E. No. 52127 DATE: _____	JOB NUMBER 26086 SCALE 1"=120' DATE 4/20/19 CHECKED BY JTT DESIGNED BY JTT	NO. _____ DATE _____ REVISIONS _____ CHK. _____
-----------------------------	--	---	---	---	--