

HANCOCK ROAD 80' RW

N00°30'05"W 541.33'

V 1046.89' PLAT

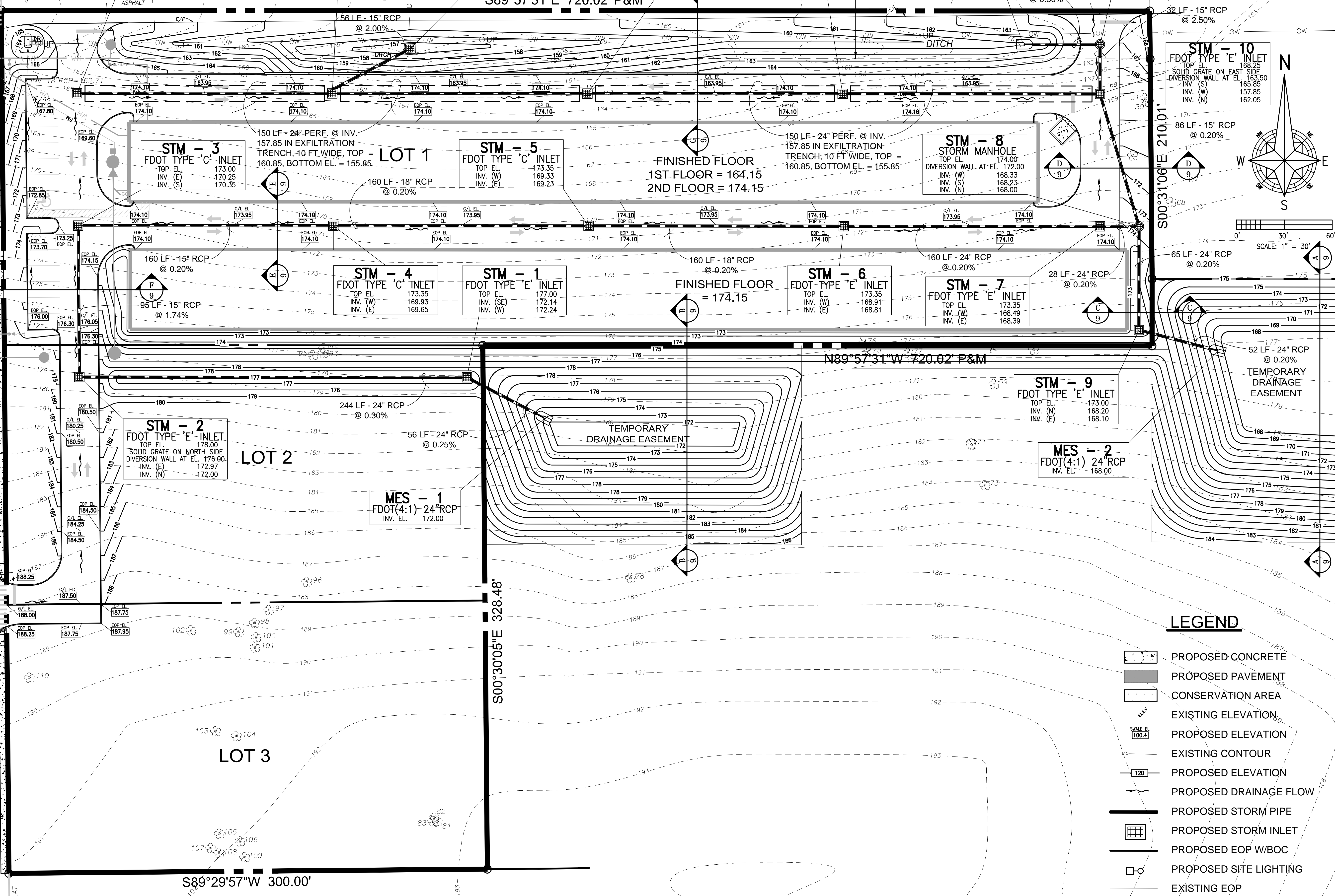
S89°29'57"W 300.00'

S00°30'05"E 328.48'

N89°57'31"W 720.02' P&M

S89°57'31"E 720.02' P&M

S00°31'06"E 210.01'



STM - 16
 FDOT TYPE 'E' INLET
 TOP EL. 167.50
 W/ SKIMMER AT END
 INV. (W) 157.85

STM - 14
 FDOT TYPE 'E' INLET
 TOP EL. 163.35
 W/SKIMMERS EACH END
 DIVERSION WALL @ EL. 159.85
 INV. (E) 157.85
 INV. (W) 157.85
 INV. (NW) 156.22

STM - 15
 FDOT TYPE 'C' INLET
 TOP EL. 157.50
 INV. (N) 155.00
 INV. (SW) 155.10

STM - 13
 FDOT TYPE 'E' INLET
 TOP EL. 163.35
 W/SKIMMERS EACH END
 INV. (E) 157.85
 INV. (W) 157.85

STM - 12
 FDOT TYPE 'E' INLET
 TOP EL. 163.35
 W/SKIMMERS EACH END
 INV. (E) 157.85
 INV. (W) 157.85

MES - 3
 FDOT(4:1) 15" RCP
 INV. EL. 161.00

STM - 11
 STORM MANHOLE
 TOP EL. 166.35
 INV. (S) 161.25
 INV. (W) 161.14

STM - 10
 FDOT TYPE 'E' INLET
 TOP EL. 168.25
 SOLID GRATE ON EAST SIDE
 DIVERSION WALL AT EL. 163.50
 INV. (S) 165.85
 INV. (W) 157.85
 INV. (N) 162.05

STM - 3
 FDOT TYPE 'C' INLET
 TOP EL. 173.00
 INV. (E) 170.25
 INV. (S) 170.35

STM - 5
 FDOT TYPE 'C' INLET
 TOP EL. 173.35
 INV. (W) 169.33
 INV. (E) 169.23

STM - 8
 STORM MANHOLE
 TOP EL. 174.00
 DIVERSION WALL AT EL. 172.00
 INV. (W) 168.33
 INV. (S) 168.23
 INV. (N) 168.00

STM - 4
 FDOT TYPE 'C' INLET
 TOP EL. 173.35
 INV. (W) 169.93
 INV. (E) 169.65

STM - 1
 FDOT TYPE 'E' INLET
 TOP EL. 177.00
 INV. (SE) 172.14
 INV. (W) 172.24

STM - 6
 FDOT TYPE 'E' INLET
 TOP EL. 173.35
 INV. (W) 168.91
 INV. (E) 168.81

STM - 7
 FDOT TYPE 'E' INLET
 TOP EL. 173.35
 INV. (W) 168.49
 INV. (E) 168.39

STM - 2
 FDOT TYPE 'E' INLET
 TOP EL. 178.00
 SOLID GRATE ON NORTH SIDE
 DIVERSION WALL AT EL. 176.00
 INV. (E) 172.97
 INV. (N) 172.00

MES - 1
 FDOT(4:1) 24" RCP
 INV. EL. 172.00

STM - 9
 FDOT TYPE 'E' INLET
 TOP EL. 173.00
 INV. (N) 168.20
 INV. (E) 168.10

MES - 2
 FDOT(4:1) 24" RCP
 INV. EL. 168.00

LEGEND

- PROPOSED CONCRETE
- PROPOSED PAVEMENT
- CONSERVATION AREA
- EXISTING ELEVATION
- PROPOSED ELEVATION
- EXISTING CONTOUR
- PROPOSED ELEVATION
- PROPOSED DRAINAGE FLOW
- PROPOSED STORM PIPE
- PROPOSED STORM INLET
- PROPOSED EOP W/BOC
- PROPOSED SITE LIGHTING
- EXISTING EOP

DATE:	JANUARY 28, 2016
SCALE:	1" = 30'
DESIGNED:	THS
DRAWN:	SCM
CHECKED BY:	THS
JOB NO.:	15130
EMAIL:	tomskelton46@gmail.com

REVISIONS	DATE

**AMERICAN CIVIL
ENGINEERING CO.**

207 N. MOSS ROAD, SUITE 211 WINTER SPRINGS, FLORIDA 32708
 PHONE: (407) 327-7700 FAX: (407) 327-0277
 CERTIFICATE OF AUTHORIZATION NO.: 0000729

PAVING, GRADING & DRAINAGE PLAN

CUBESMART
@ HANCOCK ROAD
LAKE COUNTY, FLORIDA

THOMAS H. SKELTON, PE
REGISTRATION NO. 42752