

DO NOT USE THE INFORMATION ON THIS SHEET FOR CONSTRUCTION PURPOSES. This sheet is for informational purposes only and to assist construction personnel with drainage concerns.

REVISIONS	
DATE	DESCRIPTION

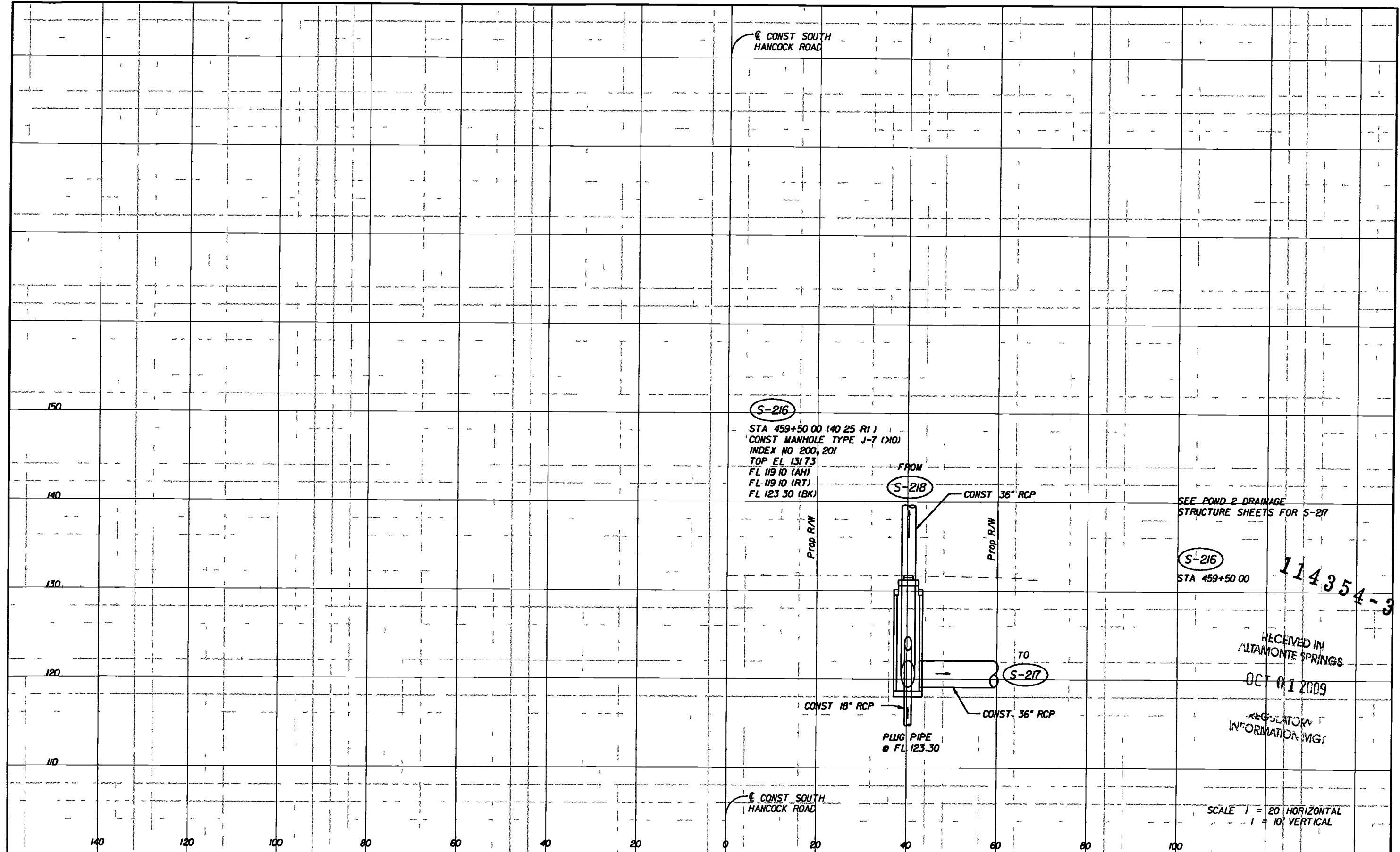
**HNTB**  
 HNTB CORPORATION  
 300 PRIMA BLVD,  
 SUITE 200  
 LAKE MARY FL 32746  
 (407) 855-0355  
 CERT OF AUTH NO 6500

**LAKE COUNTY**  
 FLORIDA

**HARTWOOD MARSH ROAD - PHASE I**

**MODIFIED PHASE 1 DRAINAGE MAP**

SHEET NO  
 2



REVISIONS	
DATE	DESCRIPTION

**HNTB**  
 HNTB CORPORATION  
 300 PRIMA BLVD,  
 SUITE 200  
 LAKE MARY FL 32746  
 (407) 805-0355  
 CERT OF AUTH NO 6500  
 ENGINEER OF RECORD MELINDA SUZANNE FISCHL, P.E  
 FL REGISTRATION NO 68406



**HARTWOOD MARSH  
ROAD**

**DRAINAGE STRUCTURE SECTIONS  
SOUTH HANCOCK ROAD**

SHEET NO  
**80**

SEE POND 2 DRAINAGE  
STRUCTURE SHEETS FOR S-27

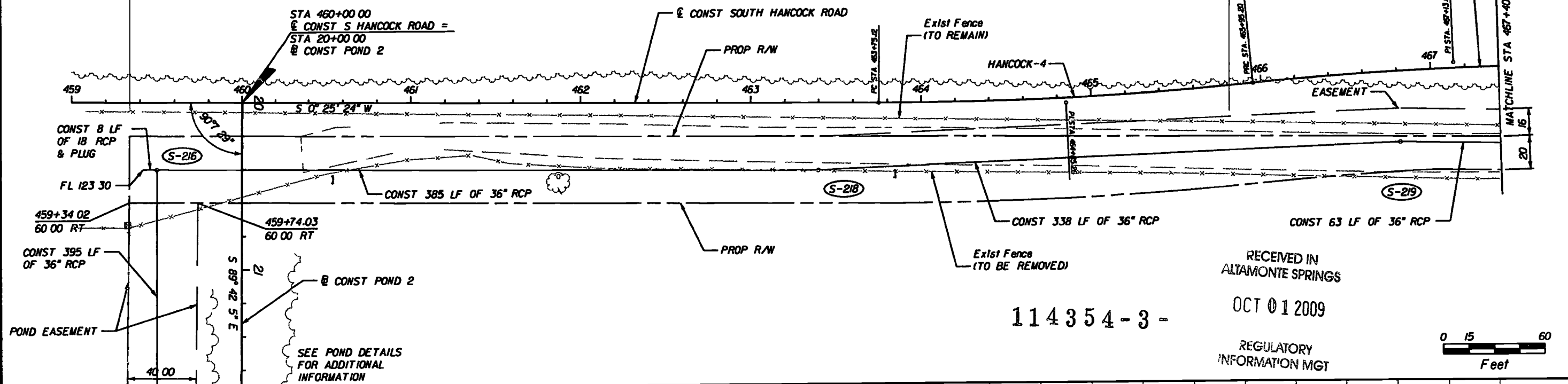
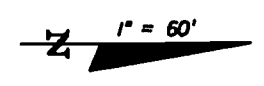
S-216  
STA 459+50.00

114354-3  
 RECEIVED IN  
ALTAMONTE SPRINGS  
 OCT 01 2009  
 REGULATORY  
INFORMATION (MGT)

SCALE 1" = 20' HORIZONTAL  
1" = 10' VERTICAL

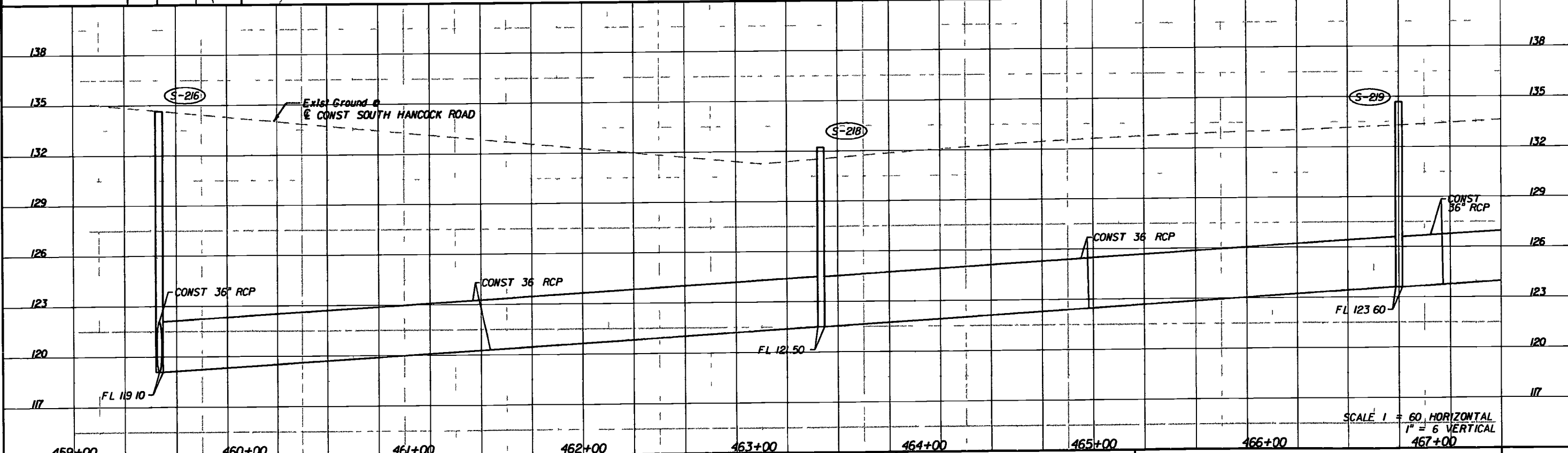
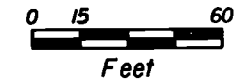
**CURVE HANCOCK-4**  
 PI Sta = 464+85.26  
 Delta = 6° 03' 08"  
 D = 2° 45' 00"  
 T = 110.14  
 L = 220.08  
 R = 2083.48'  
 PC Sta = 463+75.12  
 PT Sta = 465+95.20  
 e = NC

**CURVE HANCOCK-5**  
 PI Sta = 467+13.67  
 Delta = 6° 30' 32"  
 D = 2° 45' 00"  
 T = 118.47  
 L = 236.68  
 R = 2083.48'  
 PC Sta = 465+95.20  
 PT Sta = 468+31.88  
 e = NC



RECEIVED IN  
 ALTAMONTE SPRINGS  
 OCT 01 2009  
 REGULATORY  
 INFORMATION MGT

114354-3-



REVISIONS		
DATE	BY	DESCRIPTION

**HNTB**  
 HNTB CORPORATION  
 300 PRIMERA BLVD,  
 SUITE 800  
 LAKE MARY, FL 32746  
 (407) 805-0355  
 CERT OF AUTH NO 6500  
 ENGINEER OF RECORD: MICHAEL VERNON O DONNELL P.E.  
 FL REGISTRATION NO 67442



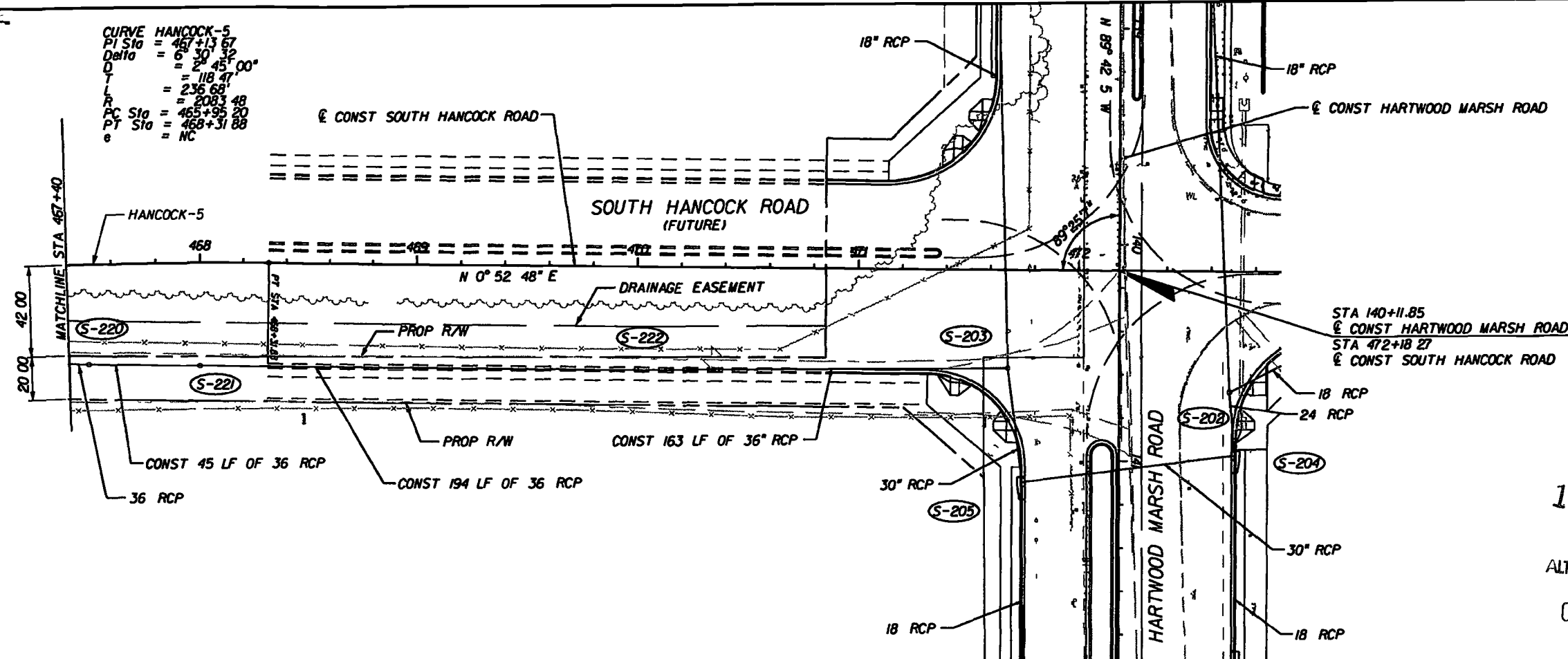
**HARTWOOD MARSH  
 ROAD - PHASE I**

**PLAN AND PROFILE  
 POND 2 OUTFALL**

SHEET NO  
**93**

CURVE HANCOCK-5  
 PI Sta = 467+13.67  
 Delta = 6° 30' 32"  
 D = 245.00'  
 T = 118.47'  
 L = 236.68'  
 R = 2083.48'  
 PC Sta = 465+95.20  
 PT Sta = 468+31.88  
 e = NC

1" = 60'

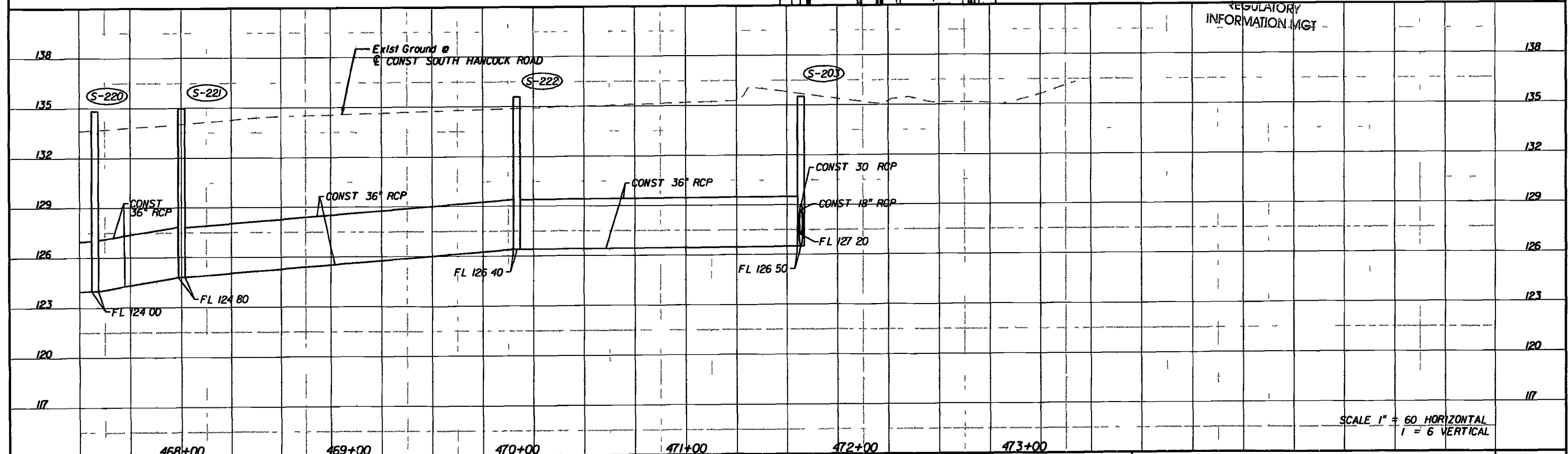
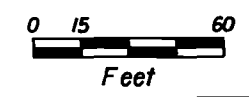


STA 140+11.85  
 @ CONST HARTWOOD MARSH ROAD =  
 STA 472+18.27  
 @ CONST SOUTH HANCOCK ROAD

114354-3-

RECEIVED IN  
 ALTAMONTE SPRINGS

OCT 01 2009



REGULATORY  
 INFORMATION MGT

SCALE 1" = 60 HORIZONTAL  
 1" = 6 VERTICAL

DATE	BY	DESCRIPTION

**HNTB**  
 HNTB CORPORATION  
 300 PRIMA BLVD,  
 SUITE 200  
 LAKE MARY, FL 32746  
 (407) 805-0355  
 CERT OF AUTH NO 6500

ENGINEER OF RECORD: MICHAEL VERNON O DONNELL P.E.  
 FL REGISTRATION NO 67442



**HARTWOOD MARSH  
 ROAD - PHASE I**

**PLAN AND PROFILE  
 POND 2 OUTFALL**

SHEET  
 NO  
**94**