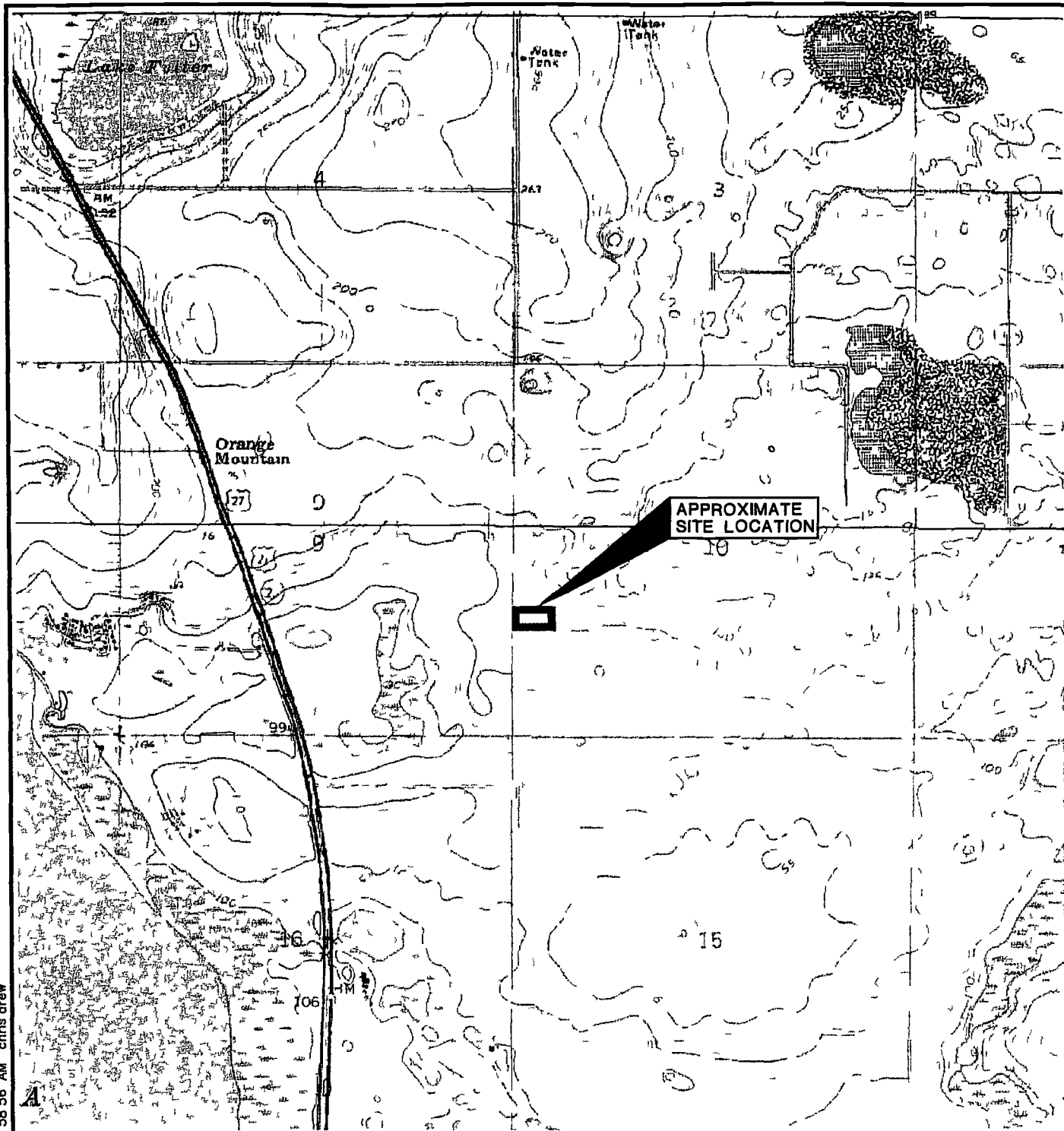


Orlando\09-6397\09639701.dwg 8/05/2009 11:58:56 AM chns drew



SECTION 10  
TOWNSHIP 23 SOUTH  
RANGE 26 EAST

OBTAINED FROM SUREIMAPS RASTER USGS QUAD MAPS CLERMONT EAST FLORIDA  
AND LAKE LOUISA FLORIDA



QUADRANGLE LOCATION

### SITE LOCATION MAP

 **Ardaman & Associates Inc**  
Geotechnical Environmental and  
Materials Consultants

**SUBSURFACE SOIL EXPLORATION**  
NEW POND 2 HARTWOOD MARSH ROAD  
LAKE COUNTY FLORIDA

DRAWN BY CD	CHECKED BY	DATE 08/04/09
FILE NO	APPROVED BY	FIGURE 1