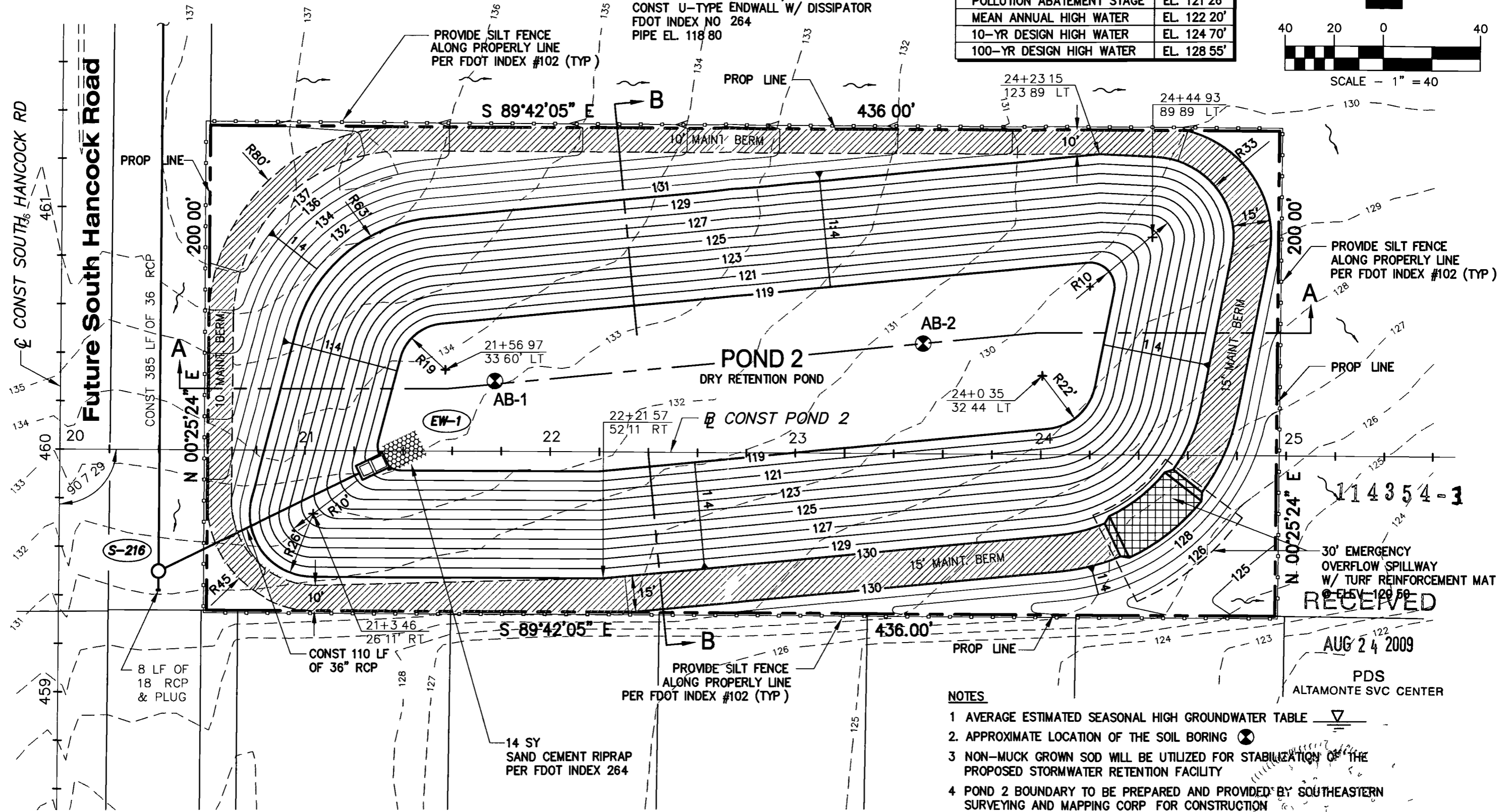
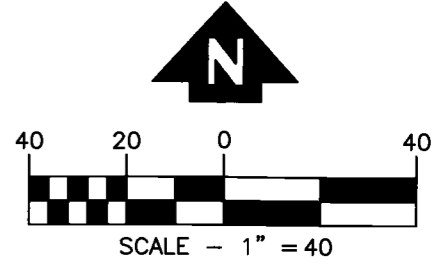


EW-1
 STA 21+32 99, (3 79' Rt)
 CONST U-TYPE ENDWALL W/ DISSIPATOR
 FDOT INDEX NO 264
 PIPE EL. 118 80

POND 2 HYDROLOGIC DATA	
POLLUTION ABATEMENT STAGE	EL. 121 26'
MEAN ANNUAL HIGH WATER	EL. 122 20'
10-YR DESIGN HIGH WATER	EL. 124 70'
100-YR DESIGN HIGH WATER	EL. 128 55'



114354-1

30' EMERGENCY OVERFLOW SPILLWAY W/ TURF REINFORCEMENT MAT
 EL. 129.58
RECEIVED

AUG 24 2009

PDS
 ALTAMONTE SVC CENTER

NOTES

- 1 AVERAGE ESTIMATED SEASONAL HIGH GROUNDWATER TABLE
- 2 APPROXIMATE LOCATION OF THE SOIL BORING
- 3 NON-MUCK GROWN SOD WILL BE UTILIZED FOR STABILIZATION OF THE PROPOSED STORMWATER RETENTION FACILITY
- 4 POND 2 BOUNDARY TO BE PREPARED AND PROVIDED BY SOUTHEASTERN SURVEYING AND MAPPING CORP FOR CONSTRUCTION

REVISION	DATE	SECTION	TOWNSHIP	RANGE
		9	23S	26E
DESIGNED	PMM	DATE	12 1-08	
DRAWN	PMM	DATE	12 1-08	
APPROVED	TM	DATE	12 1-08	

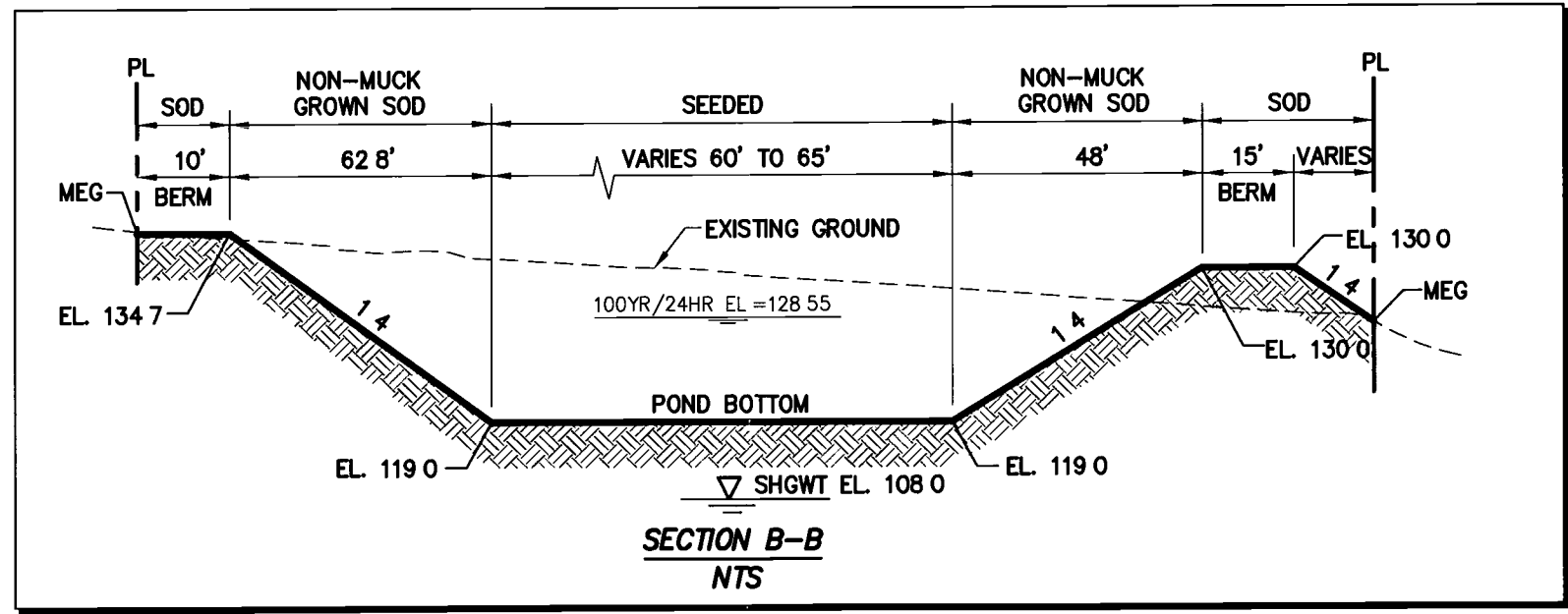
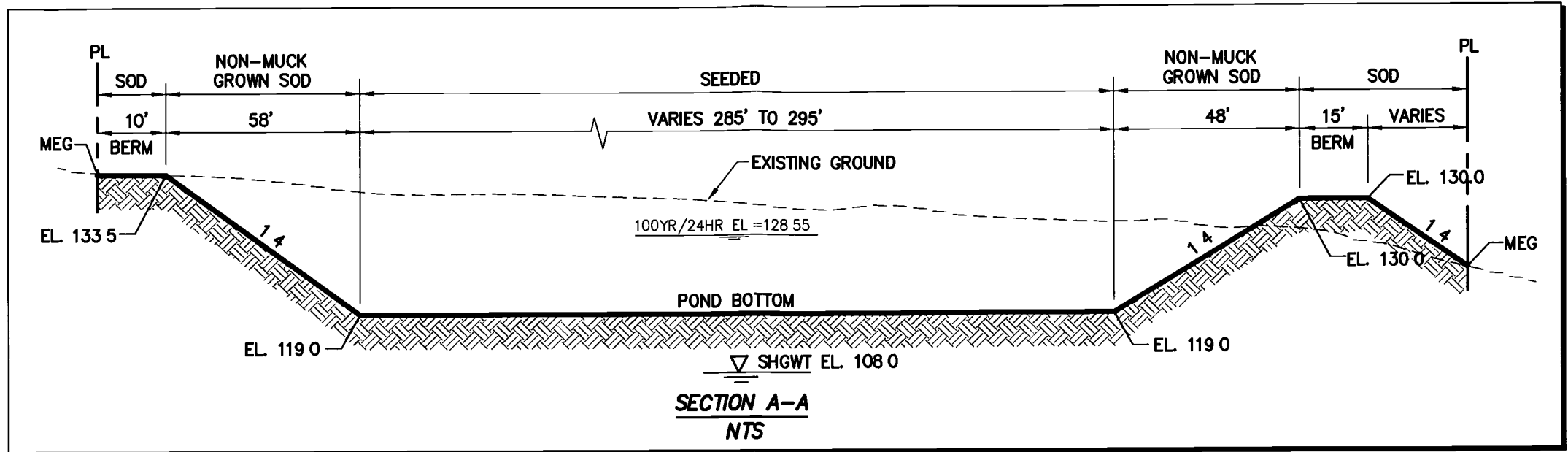


DEPARTMENT OF PUBLIC WORKS
 ENGINEERING DIVISION
 437 ARDICE AVE
 EUSTIS FLORIDA 32728

HARTWOOD MARSH RD-PHASE 1
 POND DETAIL SHEET
 POND 2

Plym
 SIGNATURE
 AUG 24 2009
 DATE
 PATERNO MAGNO JR P E FL LIC NO 53074

CAD FILE
 LCPW POND2
 SHEET #
96

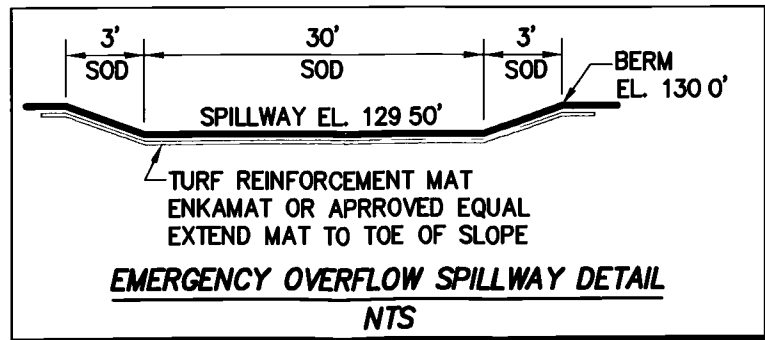


SUMMARY OF EARTHWORK
 VOLUME OF FILL = 1,280 CY
 REGULAR EXCAVATION = 16,000 CY

SUMMARY OF POND GRASSING
 SOD AREA = 7,770 SY
 SEEDED AREA = 2,109 SY

RECEIVED
 AUG 24 2009
 PDS
 ALTAMONTE SVC CENTER
 114354-3

POND 2 HYDROLOGIC DATA	
POLLUTION ABATEMENT STAGE	EL. 121.26'
MEAN ANNUAL HIGH WATER	EL. 122.20'
10-YR DESIGN HIGH WATER	EL. 124.70'
100-YR DESIGN HIGH WATER	EL. 128.55'



- NOTES**
- 1 AVERAGE ESTIMATED SEASONAL HIGH GROUNDWATER TABLE ∇
 - 2 APPROXIMATE LOCATION OF THE SOIL BORING \otimes
 - 3 NON-MUCK GROWN SOD WILL BE UTILIZED FOR STABILIZATION OF THE PROPOSED STORMWATER RETENTION FACILITY

REVISION	DATE	SECTION	TOWNSHIP	RANGE
		17	18S	24E
DESIGNED		PMM	DATE	12-1-08
DRAWN		PMM	DATE	12-1-08
APPROVED		TM	DATE	12-1-08



DEPARTMENT OF PUBLIC WORKS
 ENGINEERING DIVISION
 437 ARDICE AVE
 EUSTIS FLORIDA 32726

HARTWOOD MARSH RD-PHASE 1
 POND DETAIL SHEET
 POND 2

Paterno
 SIGNATURE
 AUG 24 2009
 DATE
 PATERNO M MAGNO JR., BE FL-EC NO 53074

CAD FILE
 LCPW PQND2
 SHEET #
96-A