

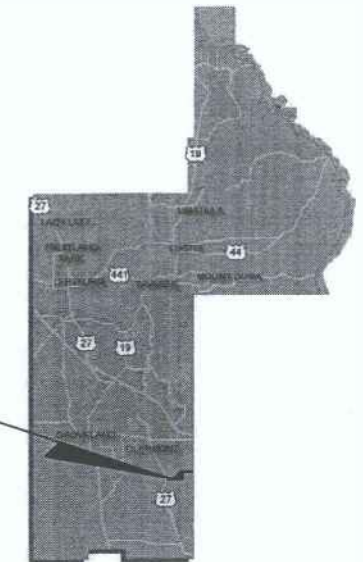
INDEX OF ROADWAY PLANS

SHEET NO.	SHEET DESCRIPTION
1	KEY SHEET
2-4	DRAINAGE MAP
5	BASIN AREAS
6-11	STRUCTURE DATA
12-17	SUMMARY OF DRAINAGE STRUCTURES
18-21	TYPICAL SECTIONS
22	GENERAL NOTES
23	PROJECT LAYOUT
24-57	PLAN SHEETS
58-88	PROFILE SHEETS
89-91	PLAN AND PROFILE SHEETS
92-94	INTERSECTION DETAILS
95	DRAINAGE DETAILS
96-99	POND DETAILS
100	NOT USED
101-116	POND CROSS SECTIONS
117-118	NOT USED
119-202	CROSS SECTIONS
203-208	SWPP
NOT INCLUDED	TRAFFIC CONTROL PLAN
NOT INCLUDED	UTILITY ADJUSTMENTS
NOT INCLUDED	GENERAL NOTES
NOT INCLUDED	TABULATION OF QUANTITIES
NOT INCLUDED	SIGNING AND PAVEMENT MARKING PLANS

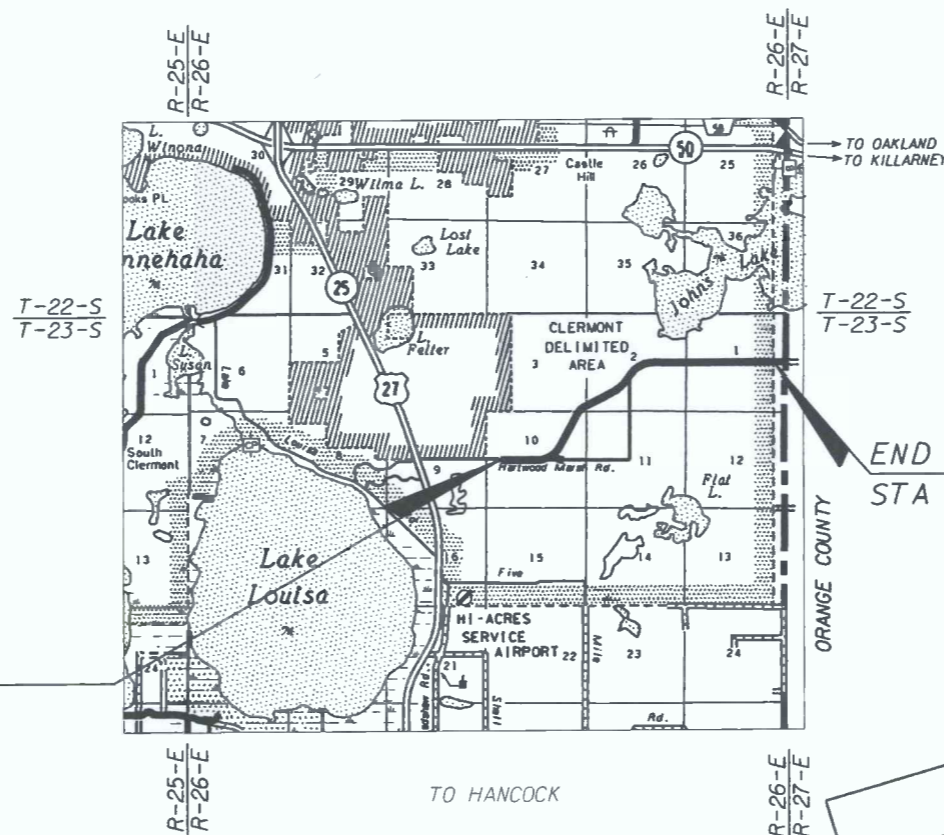


LAKE COUNTY
FLORIDA
CONTRACT PLANS

PROJECT LOCATION



HARTWOOD MARSH ROAD - PHASE II
FROM SOUTH HANCOCK TO ORANGE COUNTY LINE



COUNTY MANAGER:
CINDY HALL

COUNTY COMMISSIONERS:
JENNIFER HILL
ELAINE RENICK
JIMMY CONNER
LINDA STEWART
WELTON G. CADWELL

ROADWAY SHOP DRAWINGS
TO BE SUBMITTED TO:

MICHAEL VERNON O'DONNELL, PE
HNTB CORPORATION
300 PRIMERA BOULEVARD, SUITE 200
LAKE MARY, FLORIDA 32746

PLANS PREPARED BY:

HNTB

HNTB CORPORATION
300 PRIMERA BOULEVARD, SUITE 200
LAKE MARY, FL 32746
PHONE: (407) 805-0355
FAX: 407-805-0227
CERT. OF AUTH. NO. 6500
VENDOR NO.: V98567003

NOTE: THE SCALE OF THESE PLANS MAY
HAVE CHANGED DUE TO REPRODUCTION.

**SJRWMD
PERMIT SUBMITTAL
JANUARY 2009**

RECEIVED IN
ALTAMONTE SPRINGS
114354-2
MAR 02 2009

KEY SHEET INFORMATION		REGULATORY INFORMATION
DATE	BY	DESCRIPTION

ROADWAY PLANS
ENGINEER OF RECORD: MICHAEL VERNON O'DONNELL, P.E.

P.E. NO.: 67442

FISCAL YEAR	SHEET NO.
08	1

GOVERNING STANDARDS AND SPECIFICATIONS:
FLORIDA DEPARTMENT OF TRANSPORTATION,
DESIGN STANDARDS DATED JANUARY 2008,
AND STANDARD SPECIFICATIONS FOR ROAD AND
BRIDGE CONSTRUCTION DATED 2007,
AS AMENDED BY CONTRACT DOCUMENTS.

BEGIN PROJECT
STA 155+50.00

END PROJECT
STA 322+98.06

APPLICABLE DESIGN STANDARDS MODIFICATIONS: 7-1-08

**FINAL PERMITTED
PLANS**

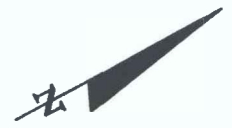
For Design Standards Modifications click on
"Design Standards" at the following web site:
<http://www.dot.state.fl.us/rddesign/>

DATE 9/21/09
INITIAL MS

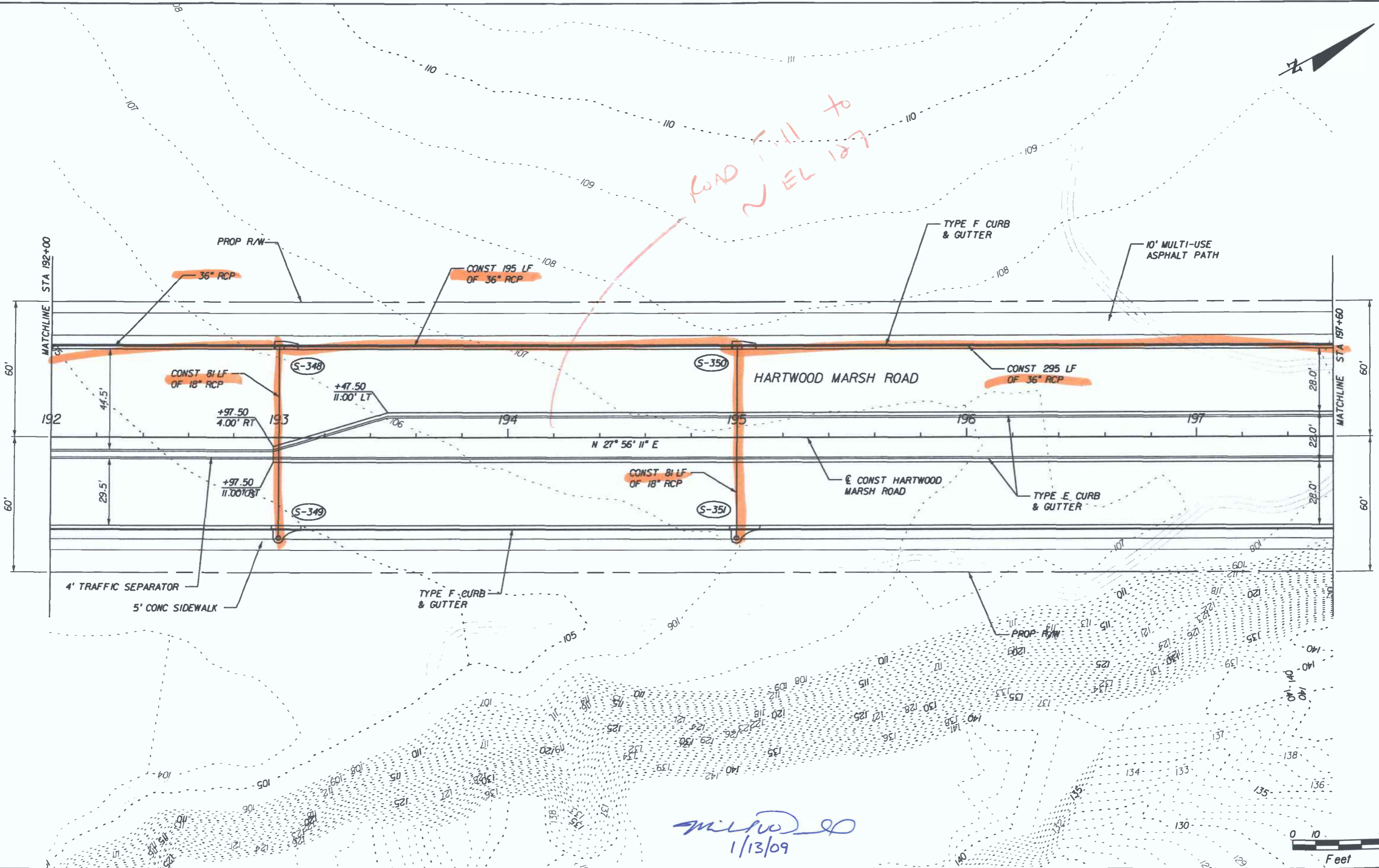
PROJECT LENGTH IS BASED ON $\frac{1}{2}$ OF CONSTRUCTION

LENGTH OF PROJECT		
	LINEAR FEET	MILES
ROADWAY	16,748.06	3.171
BRIDGES	0.00	0.000
NET LENGTH OF PROJECT	16,748.06	3.171
EXCEPTIONS	0.00	0.000
GROSS LENGTH OF PROJECT	16,748.06	3.171

LAKE COUNTY PROJECT MANAGER: THOMAS MCCANN, P.E.



ROAD WILL TO
~ EL 127



Michael Vernon O'Donnell
1/13/09



REVISIONS	
DATE	DESCRIPTION

HNTB
 HNTB CORPORATION
 300 PRIMERA BLVD.
 SUITE 200
 LAKE MARY, FL 32746
 (407) 805-0355
 CERT. OF AUTH. NO. 6500

ENGINEER OF RECORD: MICHAEL VERNON O'DONNELL, P.E.
 FL. REGISTRATION NO. 67442



**HARTWOOD MARSH
 ROAD - PHASE II**

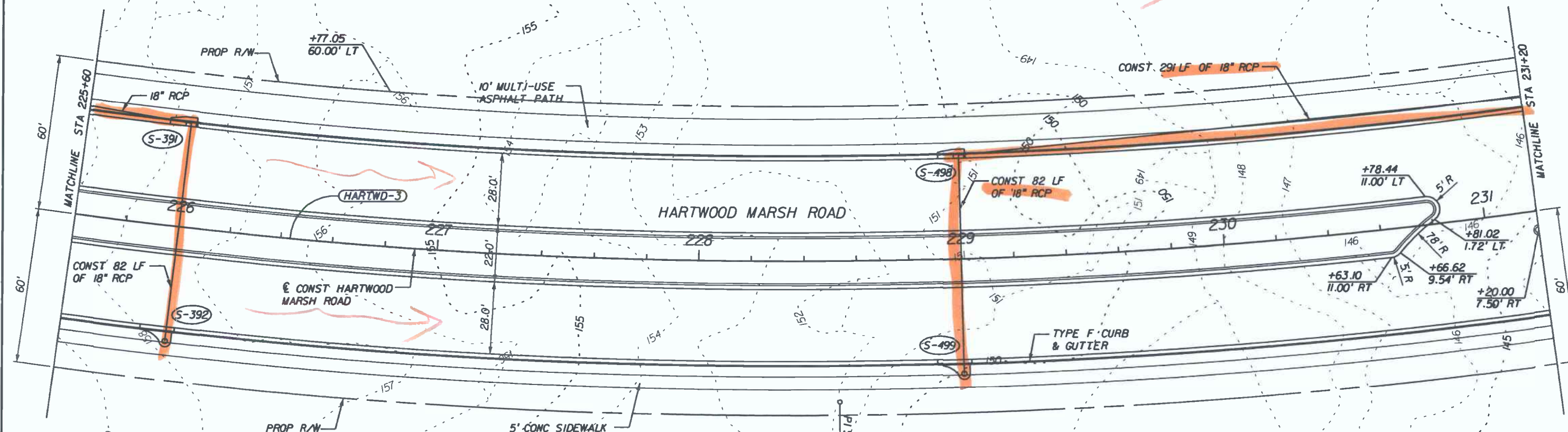
PLAN SHEET

SHEET NO.
33

CURVE HARTWD-3
 PI STA = 228+61.89
 DELTA = 26° 00' 00" (LT)
 D = 2° 45' 00"
 T = 481.01
 L = 945.45
 R = 2,083.48
 PC STA = 223+80.88
 PT STA = 233+26.34
 e = -NC

BASIN 3

BASIN 5



Michael
 1/13/09



REVISIONS		DESCRIPTION
DATE	BY	

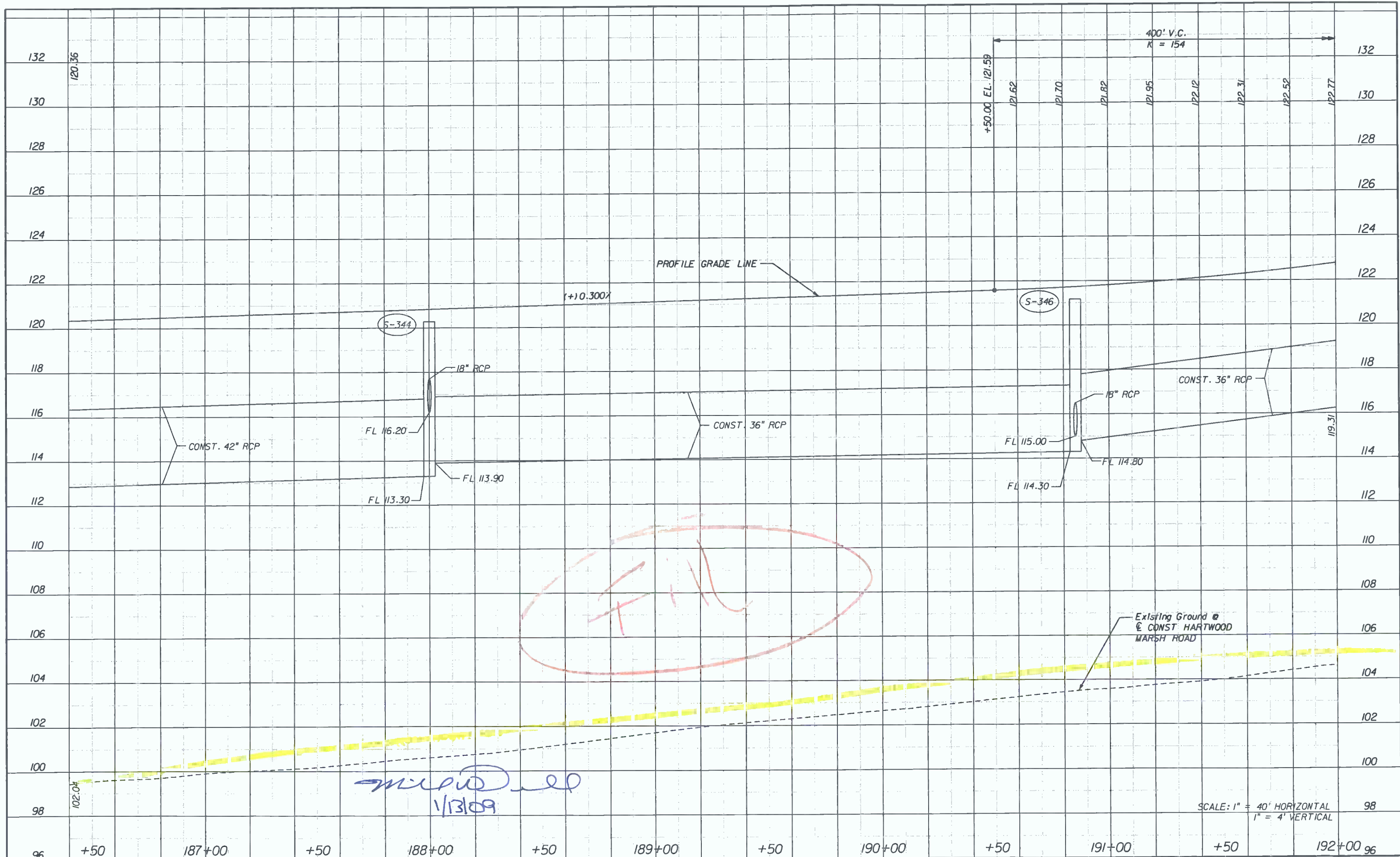
HNTB
 HNTB CORPORATION
 300 PRIMERA BLVD,
 SUITE 200
 LAKE MARY, FL 32746
 (407) 805-0355
 CERT. OF AUTH. NO. 6500
 ENGINEER OF RECORD: MICHAEL VERNON O'DONNELL, P.E.
 FL. REGISTRATION NO. 67442



**HARTWOOD MARSH
 ROAD - PHASE II**

PLAN SHEET

SHEET
 NO.
39



Michael O'Donnell
1/13/09

FILL

SCALE: 1" = 40' HORIZONTAL
1" = 4' VERTICAL

REVISIONS	
DATE	DESCRIPTION

HNTB
HNTB CORPORATION
300 PRIMERA BLVD,
SUITE 200
LAKE MARY, FL 32746
(407) 805-0355
CERT. OF AUTH. NO. 6500

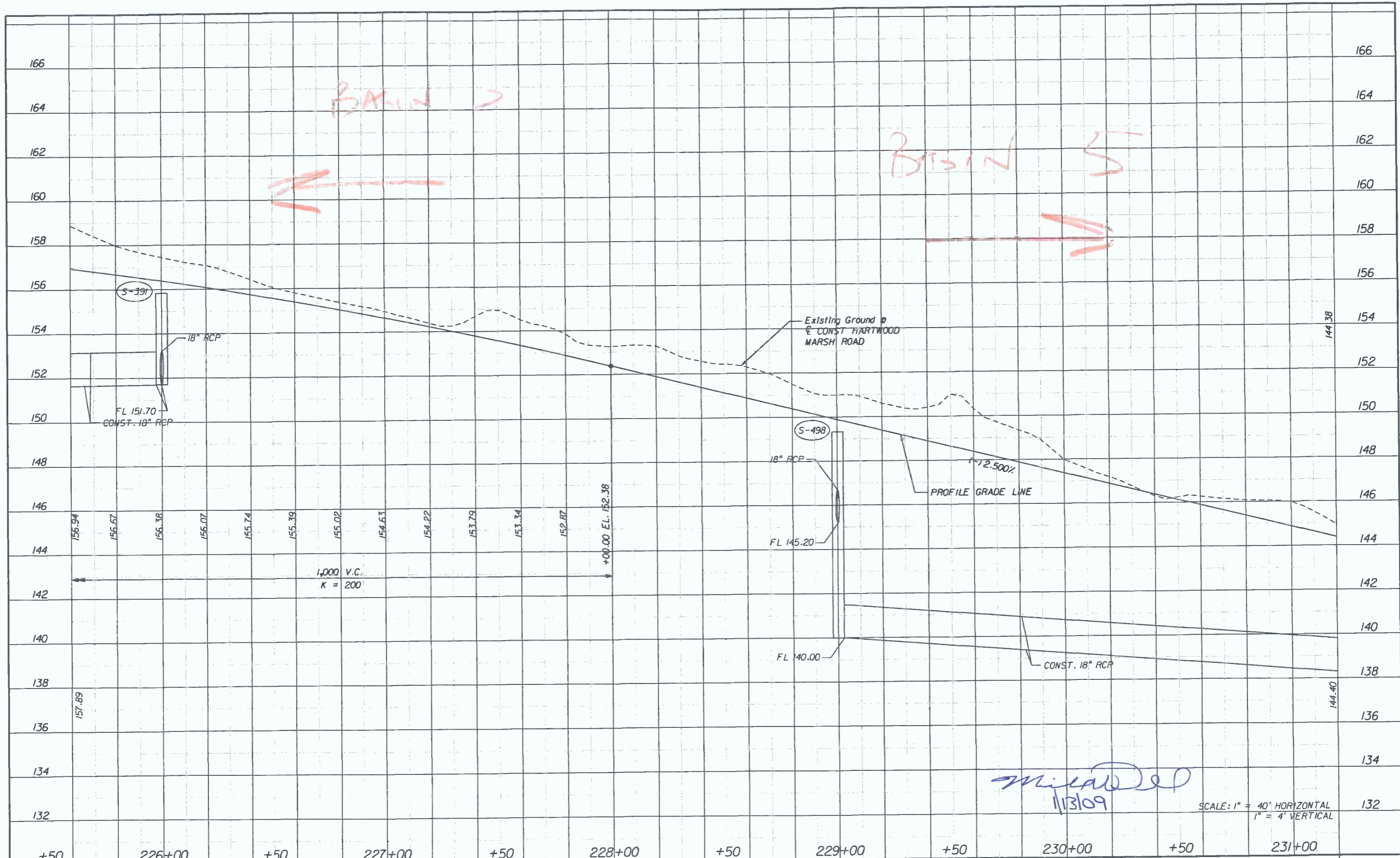
ENGINEER OF RECORD: MICHAEL VERNON O'DONNELL, P.E.
FL. REGISTRATION NO. 67442



**HARTWOOD MARSH
ROAD - PHASE II**

**PROFILE SHEET
HARTWOOD MARSH ROAD**

SHEET NO.
64



BASIN →

BASIN ←

1,000 V.C.
K = 200

Michael J. P.
11/3/09

SCALE: 1" = 40' HORIZONTAL
1" = 4' VERTICAL

REVISIONS	
DATE	DESCRIPTION

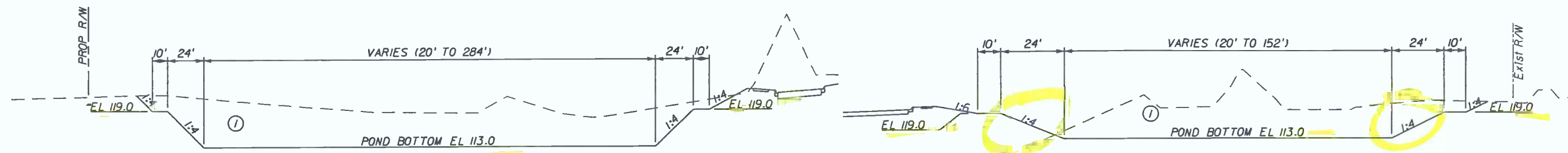
HNTB
 HNTB CORPORATION
 300 PRIMERA BLVD,
 SUITE 200
 LAKE MARY, FL 32746
 (407) 805-0355
 CERT. OF AUTH. NO. 6500
 ENGINEER OF RECORD: MICHAEL VERNON O'DONNELL, P.E.
 FL. REGISTRATION NO. 67442



**HARTWOOD MARSH
 ROAD - PHASE II**

**PROFILE SHEET
 HARTWOOD MARSH ROAD**

SHEET NO.
71



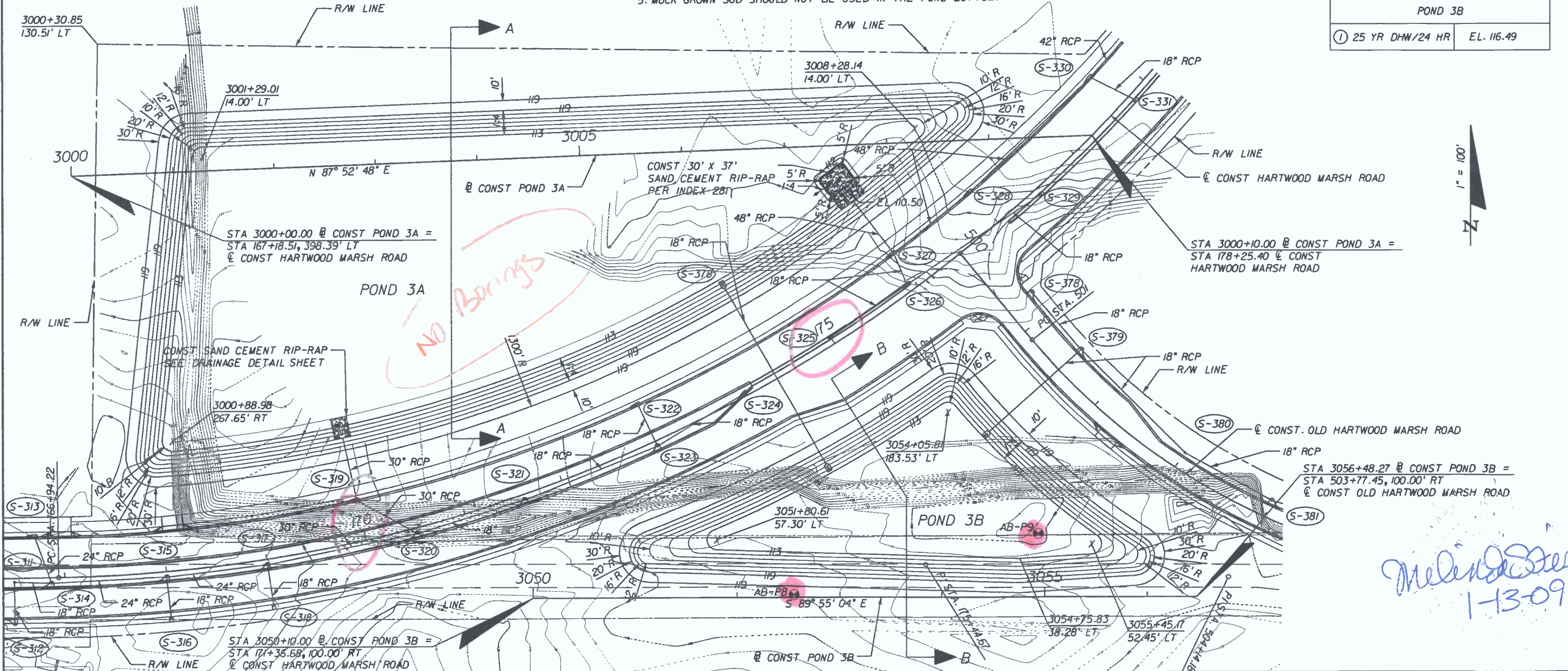
POND 3A	
① 25 YR DHW/24 HR	EL. 116.49

SECTION A-A
NTS

- NOTES:
1. AVERAGE ESTIMATED SEASONAL HIGH WATER TABLE ELEVATION ∇ (EL 103.80)
 2. AVERAGE ENCOUNTERED WATER TABLE ∇ (GNE)
 3. APPROXIMATE LOCATION OF THE BORING \odot
 4. PRIOR TO SODDING THE POND, REMOVE ALL CONSTRUCTION MATERIAL THAT MAY HAVE DEPOSITED IN THE POND. RAKE AND LOOSEN POND BOTTOM FOR OPTIMAL INFILTRATION.
 5. MUCK GROWN SOD SHOULD NOT BE USED IN THE POND BOTTOM.

SECTION B-B
NTS

POND 3B	
① 25 YR DHW/24 HR	EL. 116.49



REVISIONS	
DATE	DESCRIPTION

HNTB
HNTB CORPORATION
300 PRIMERA BLVD.
SUITE 200
LAKE MARY, FL 32746
(407) 805-0355
CERT. OF AUTH. NO. 6500

ENGINEER OF RECORD: MELINDA S. FISCHL, P.E.
FL. REGISTRATION NO. 68406



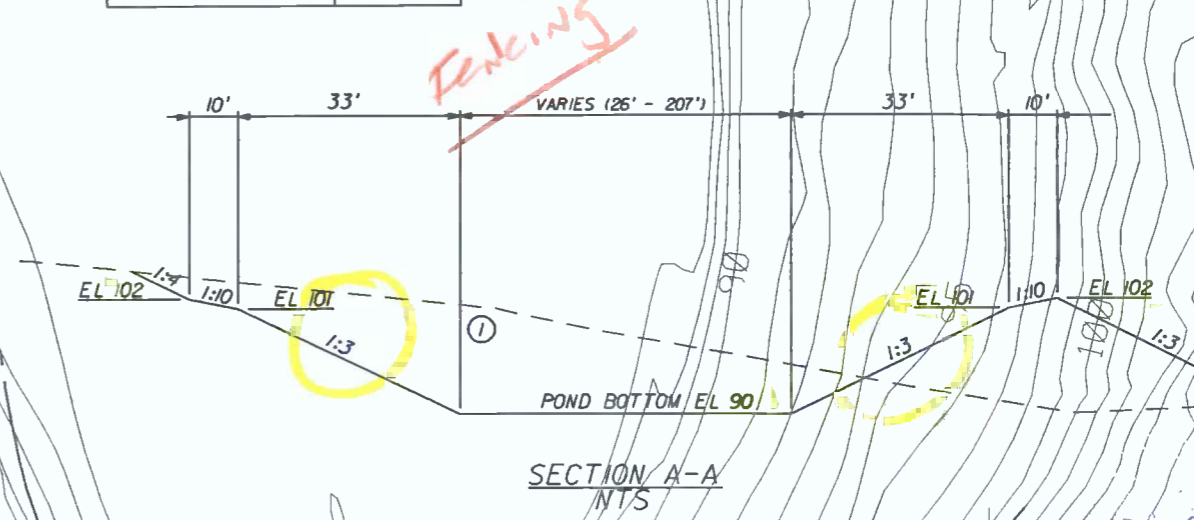
HARTWOOD MARSH ROAD - PHASE II

**POND DETAIL SHEET
PONDS 3A & 3B**

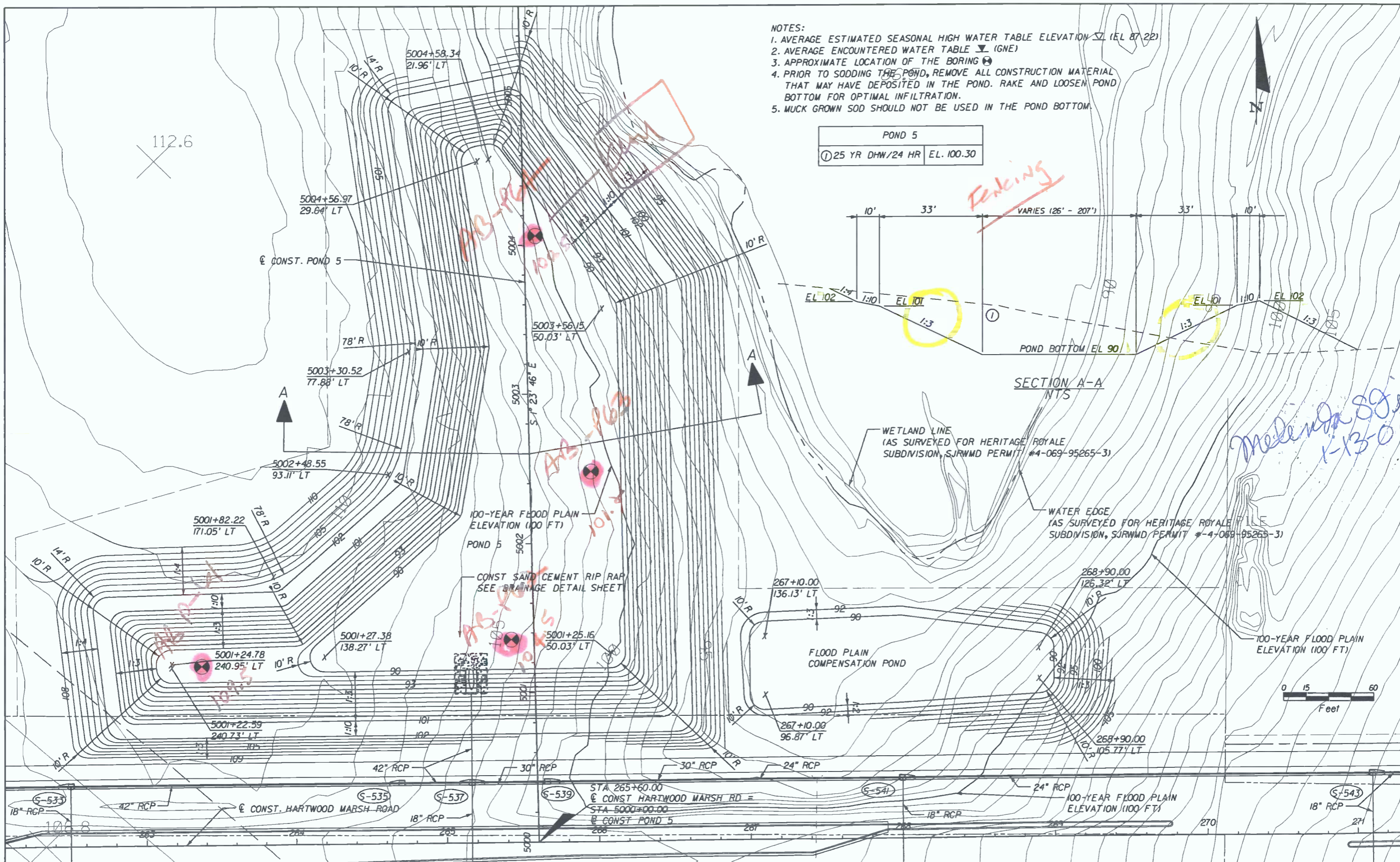
SHEET NO.
96

- NOTES:
1. AVERAGE ESTIMATED SEASONAL HIGH WATER TABLE ELEVATION ∇ (EL 87.22)
 2. AVERAGE ENCOUNTERED WATER TABLE ∇ (GNE)
 3. APPROXIMATE LOCATION OF THE BORING \odot
 4. PRIOR TO SODDING THE POND, REMOVE ALL CONSTRUCTION MATERIAL THAT MAY HAVE DEPOSITED IN THE POND. RAKE AND LOOSEN POND BOTTOM FOR OPTIMAL INFILTRATION.
 5. MUCK GROWN SOD SHOULD NOT BE USED IN THE POND BOTTOM.

POND 5	
① 25 YR DHW/24 HR	EL. 100.30



*Melinda S. Fischl
1-13-09*



REVISIONS	
DATE	DESCRIPTION

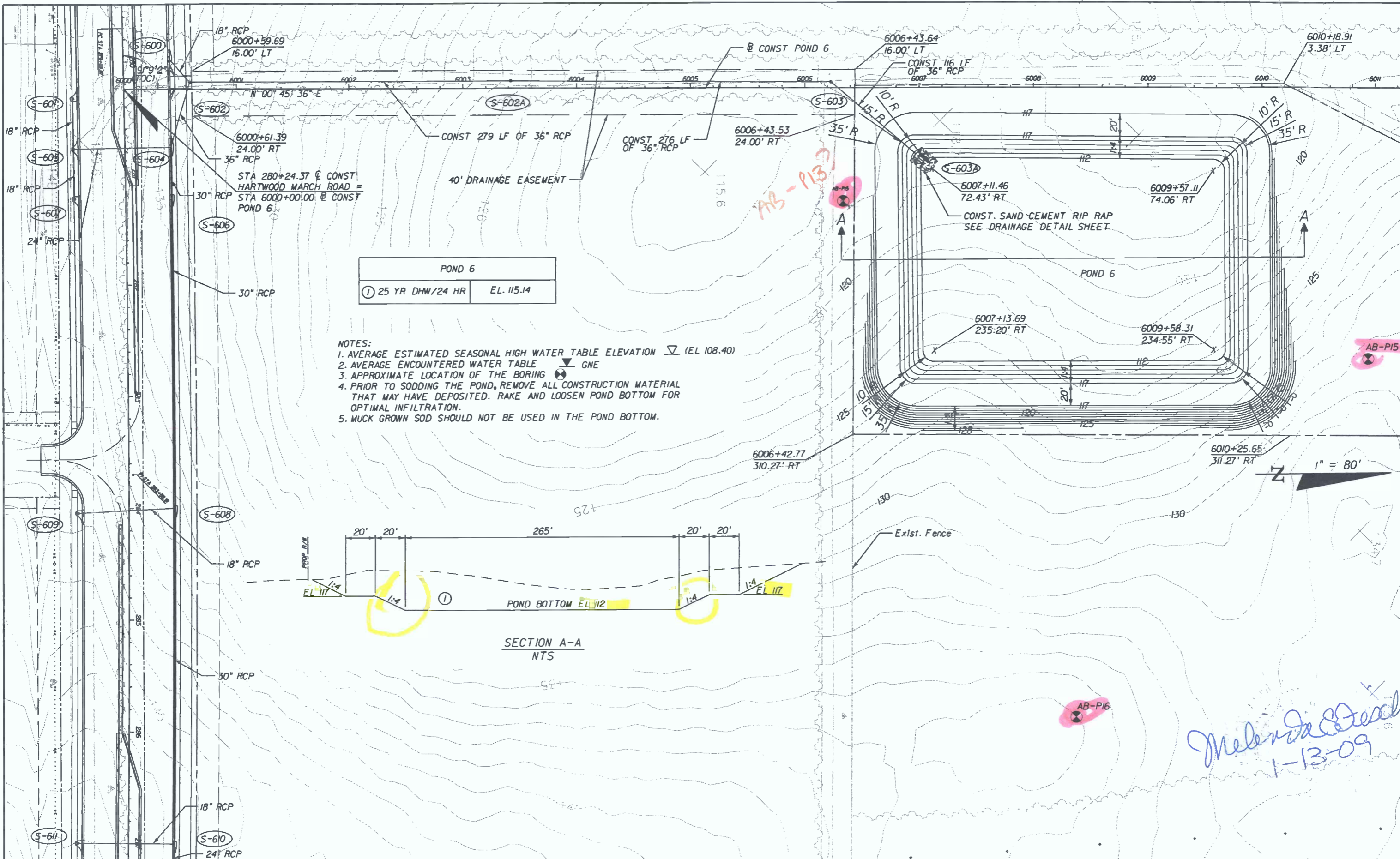
HNTB
 HNTB CORPORATION
 300 PRIMERA BLVD,
 SUITE 200
 LAKE WARY, FL 32746
 (407) 805-0355
 CERT. OF AUTH. NO. 6500
 ENGINEER OF RECORD: MELINDA S. FISCHL, P.E.
 FL. REGISTRATION NO. 68406

LAKE COUNTY
 FLORIDA

**HARTWOOD MARSH
 ROAD - PHASE II**

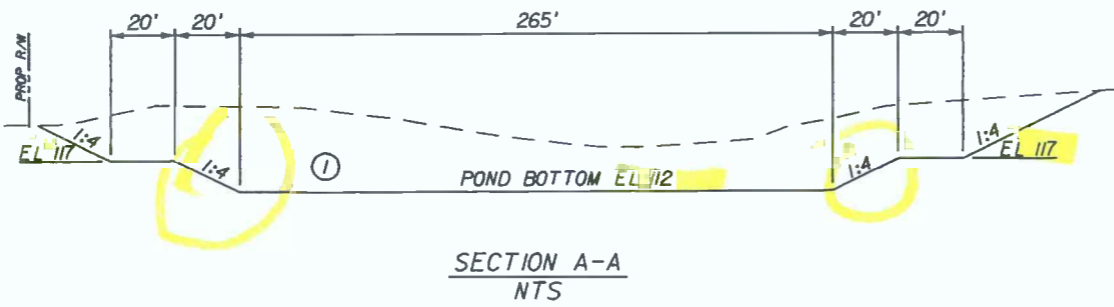
**POND DETAIL SHEET
 POND 5**

SHEET NO.
 97



POND 6	
① 25 YR DHW/24 HR	EL. 115.14

- NOTES:
1. AVERAGE ESTIMATED SEASONAL HIGH WATER TABLE ELEVATION ∇ (EL 108.40)
 2. AVERAGE ENCOUNTERED WATER TABLE ∇ GNE
 3. APPROXIMATE LOCATION OF THE BORING \odot
 4. PRIOR TO SODDING THE POND, REMOVE ALL CONSTRUCTION MATERIAL THAT MAY HAVE DEPOSITED. RAKE AND LOOSEN POND BOTTOM FOR OPTIMAL INFILTRATION.
 5. MUCK GROWN SOD SHOULD NOT BE USED IN THE POND BOTTOM.



DATE	BY	DESCRIPTION

HNTB
 HNTB CORPORATION
 300 PRIMERA BLVD,
 SUITE 200
 LAKE MARY, FL 32746
 (407) 805-0355
 CERT. OF AUTH. NO. 6500

ENGINEER OF RECORD: MELINDA S. FISCHL, P.E.
 FL. REGISTRATION NO. 68406



**HARTWOOD MARSH
 ROAD - PHASE II**

**POND DETAIL SHEET
 POND 6**

SHEET NO.
 98

Melinda Fischl
 1-13-09