

INDEX OF ROADWAY PLANS

SHEET NO.	SHEET DESCRIPTION
1	KEY SHEET
2-4	DRAINAGE MAP
5	BASIN AREAS
6-11	STRUCTURE DATA
12-17	SUMMARY OF DRAINAGE STRUCTURES
18-21	TYPICAL SECTIONS
22	GENERAL NOTES
23	PROJECT LAYOUT
24-57	PLAN SHEETS
58-88	PROFILE SHEETS
89-91	PLAN AND PROFILE SHEETS
92-94	INTERSECTION DETAILS
95	DRAINAGE DETAILS
96-99	POND DETAILS
100	NOT USED
101-116	POND CROSS SECTIONS
117-118	NOT USED
119-202	CROSS SECTIONS
203-208	SWPPP
NOT INCLUDED	<del>TRAFFIC CONTROL PLAN</del>
NOT INCLUDED	<del>UTILITY ADJUSTMENTS</del>
NOT INCLUDED	<del>GENERAL NOTES</del>
NOT INCLUDED	<del>TABULATION OF QUANTITIES</del>
NOT INCLUDED	<del>SIGNING AND PAVEMENT MARKING PLANS</del>

GOVERNING STANDARDS AND SPECIFICATIONS:  
 FLORIDA DEPARTMENT OF TRANSPORTATION,  
 DESIGN STANDARDS DATED JANUARY 2008,  
 AND STANDARD SPECIFICATIONS FOR ROAD AND  
 BRIDGE CONSTRUCTION DATED 2007,  
 AS AMENDED BY CONTRACT DOCUMENTS.

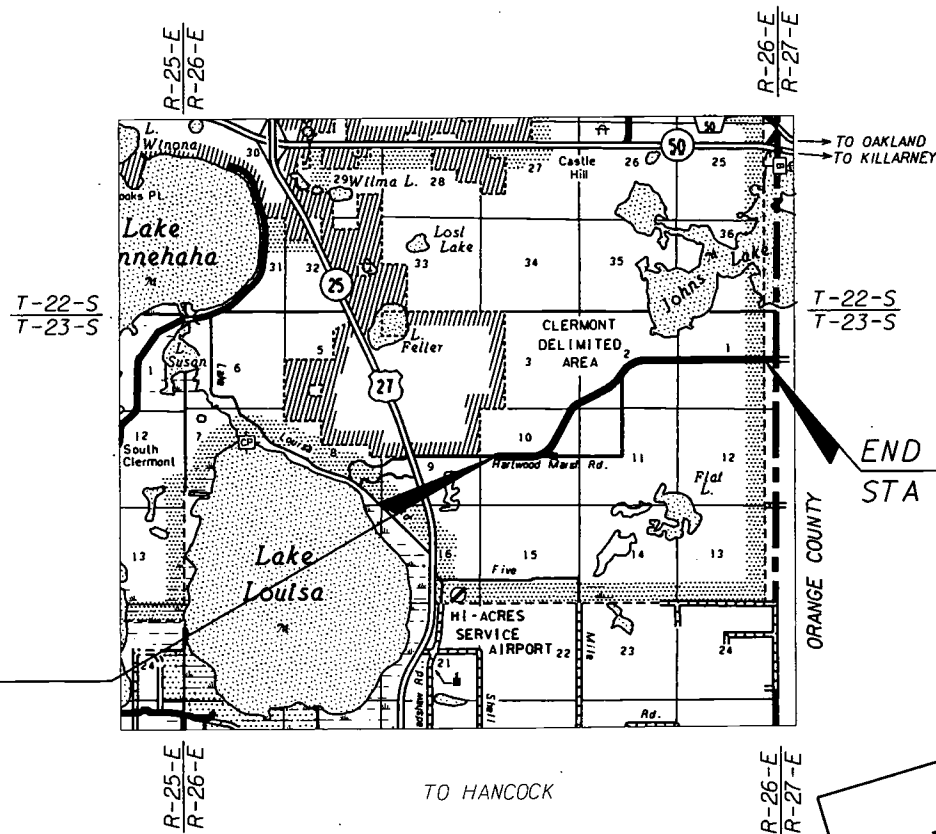
APPLICABLE DESIGN STANDARDS MODIFICATIONS: 7-1-08

For Design Standards Modifications click on  
 "Design Standards" at the following web site:  
<http://www.dot.state.fl.us/rddesign/>



LAKE COUNTY  
 FLORIDA  
**CONTRACT PLANS**

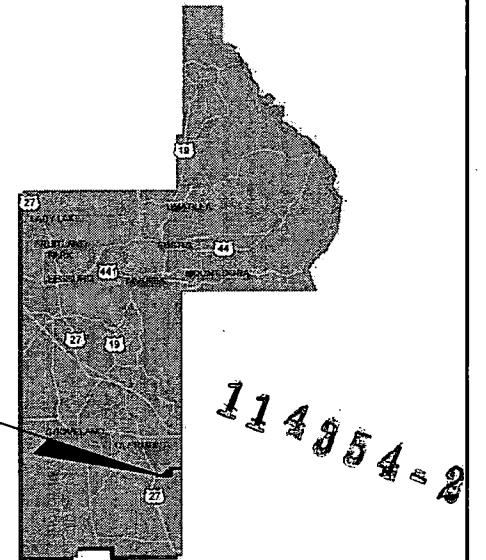
HARTWOOD MARSH ROAD - PHASE II  
 FROM SOUTH HANCOCK TO ORANGE COUNTY LINE



BEGIN PROJECT  
 STA. 155+50.00

END PROJECT  
 STA 322+98.06

PROJECT LOCATION



RECEIVED IN  
 ALTAMONTE SPRINGS

MAR 02 2009

REGULATORY  
 INFORMATION MGT.

COUNTY MANAGER:  
 CINDY HALL

COUNTY COMMISSIONERS:  
 JENNIFER HILL  
 ELAINE RENICK  
 JIMMY CONNER  
 LINDA STEWART  
 WELTON G. CADWELL

ROADWAY SHOP DRAWINGS  
 TO BE SUBMITTED TO:

MICHAEL VERNON O'DONNELL, PE  
 HNTB CORPORATION  
 300 PRIMERA BOULEVARD, SUITE 200  
 LAKE MARY, FLORIDA 32746

PLANS PREPARED BY:

**HNTB**

HNTB CORPORATION  
 300 PRIMERA BOULEVARD, SUITE 200  
 LAKE MARY, FL 32746  
 PHONE: (407) 805-0355  
 FAX: 407-805-0227  
 CERT. OF AUTH. NO. 6500  
 VENDOR NO.: V98567003

NOTE: THE SCALE OF THESE PLANS MAY  
 HAVE CHANGED DUE TO REPRODUCTION.

**SJRWMD  
 PERMIT SUBMITTAL  
 JANUARY 2009**

PROJECT LENGTH IS BASED ON  $\epsilon$  OF CONSTRUCTION

LENGTH OF PROJECT		
	LINEAR FEET	MILES
ROADWAY	16,748.06	3.171
BRIDGES	0.00	0.000
NET LENGTH OF PROJECT	16,748.06	3.171
EXCEPTIONS	0.00	0.000
GROSS LENGTH OF PROJECT	16,748.06	3.171

KEY SHEET REVISIONS		
DATE	BY	DESCRIPTION

ROADWAY PLANS  
 ENGINEER OF RECORD: MICHAEL VERNON O'DONNELL, P.E.

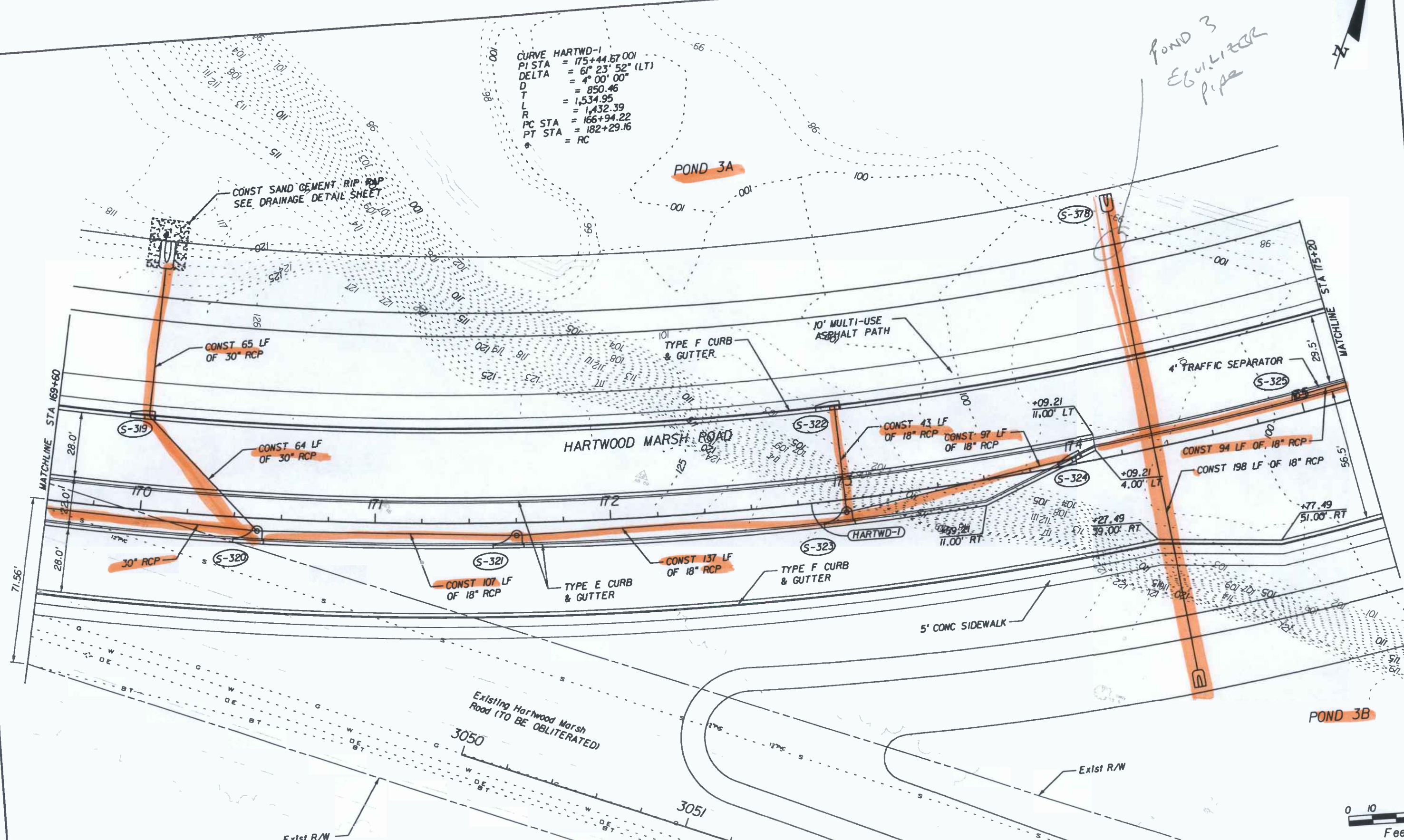
P.E. NO.: 67442

FISCAL YEAR	SHEET NO.
08	1

LAKE COUNTY PROJECT MANAGER: THOMAS MCCANN, P.E.

POND 3  
EQUIVALENT  
PIPE

CURVE HARTWD-1  
PI STA = 175+44.67 001  
DELTA = 6° 23' 52" (LT)  
D = 4° 00' 00"  
T = 850.46  
L R = 1,534.95  
PC STA = 166+94.22  
PT STA = 182+29.16  
= RC



*Handwritten signature and date*  
1/13/09



DATE	BY	DESCRIPTION

**HNTB**  
HNTB CORPORATION  
300 PRIMA BLVD,  
SUITE 200  
LAKE MARY, FL 32746  
(407) 805-0355  
CERT. OF AUTH. NO. 6500

ENGINEER OF RECORD: MICHAEL VERNON O'DONNELL, P.E.  
FL. REGISTRATION NO. 67442



**HARTWOOD MARSH ROAD - PHASE II**

**PLAN SHEET**

SHEET NO.  
**29**

1/13/2009 9:32:35 AM \\LKM\00\pww\rt\Jobs\11561-1\11561\0001\roadway\plan rd13.dgn