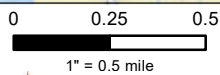


General Location

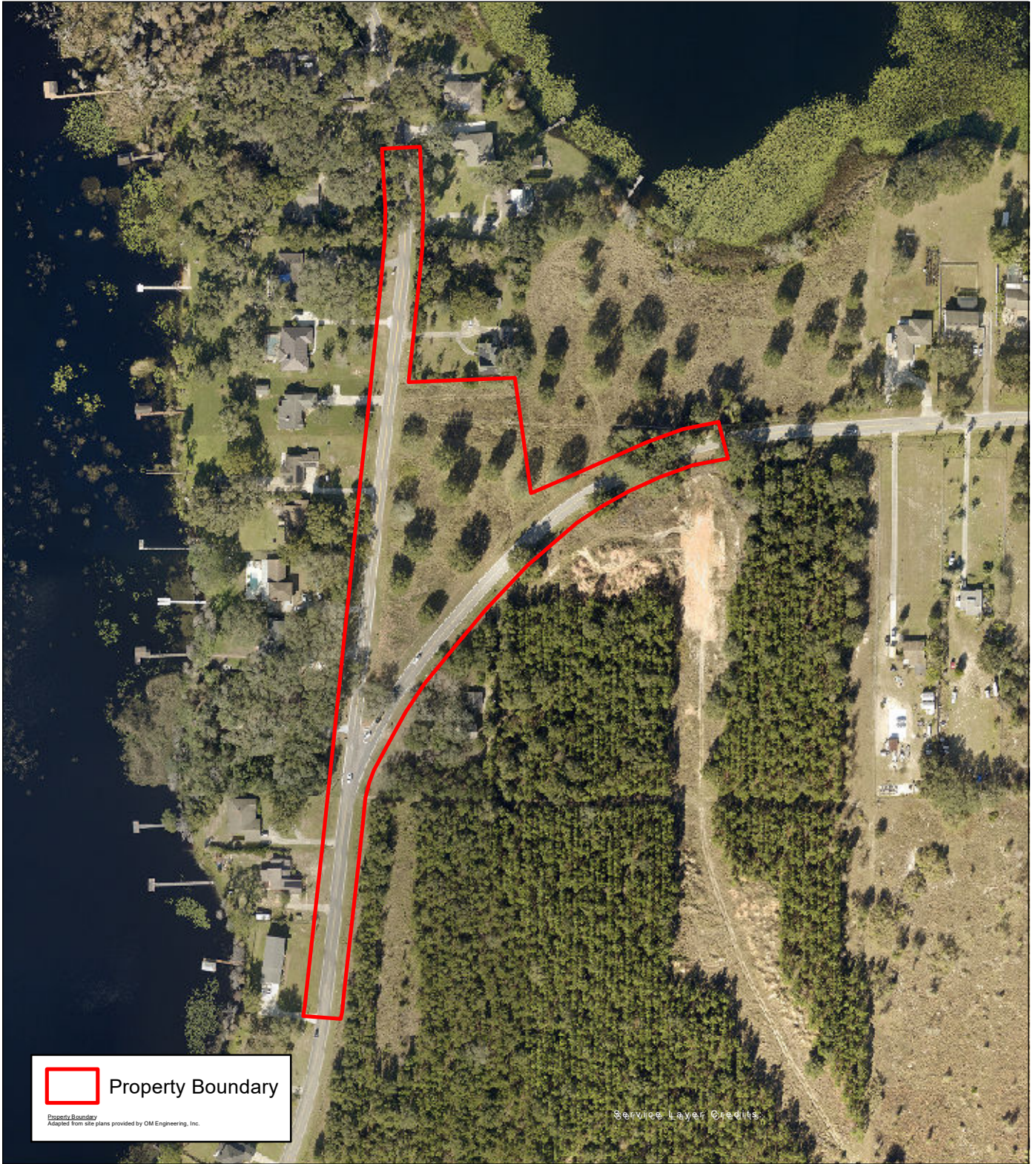


2324 LEU ROAD ORLANDO, FLORIDA 32803
 TEL 407.374.3681 CELL 407.405.8725
 WWW.THOMSONENV.COM

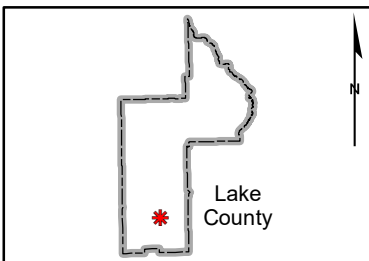
Figure 1 Location Map

CR 561 & Lakeshore Roundabout
 Lake County, Florida
 Section 14, Township 23 S, Range 25 E

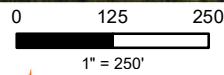
Thomson Project No. 23-1403
 March 2024



Service Layer Credits



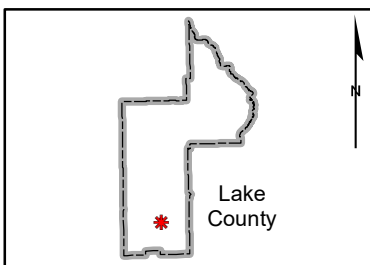
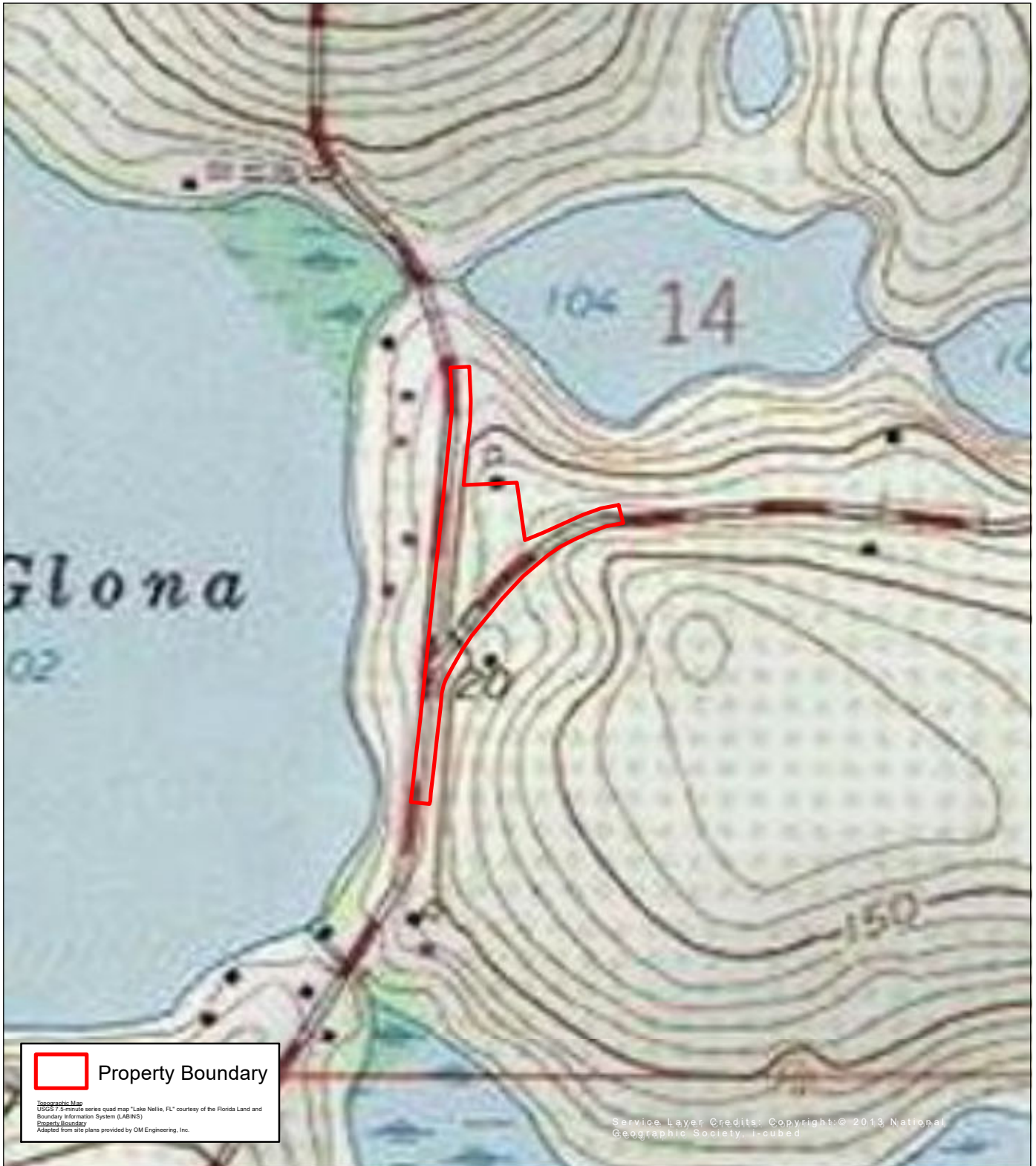
General Location



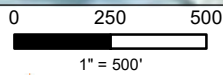
2324 LEU ROAD ORLANDO, FLORIDA 32803
 TEL 407.374.3681 CELL 407.405.8725
 WWW.THOMSONENV.COM

Figure 2
2023 Aerial Photograph
 CR 561 & Lakeshore Roundabout
 Lake County, Florida
 Section 14, Township 23 S, Range 25 E

Thomson Project No. 23-1403
 March 2024



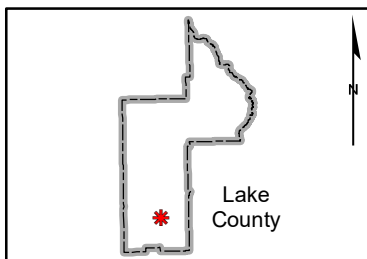
General Location



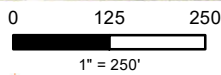
2324 LEU ROAD ORLANDO, FLORIDA 32803
 TEL 407.374.3681 CELL 407.405.8725
 WWW.THOMSONENV.COM

Figure 3
Topographic Map
 CR 561 & Lakeshore Roundabout
 Lake County, Florida
 Section 14, Township 23 S, Range 25 E

Thomson Project No. 23-1403
 March 2024



General Location

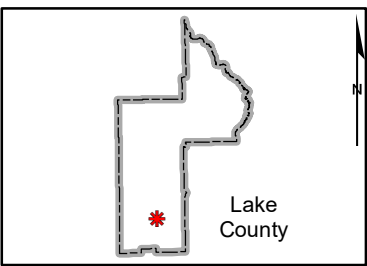
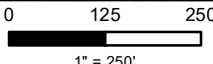
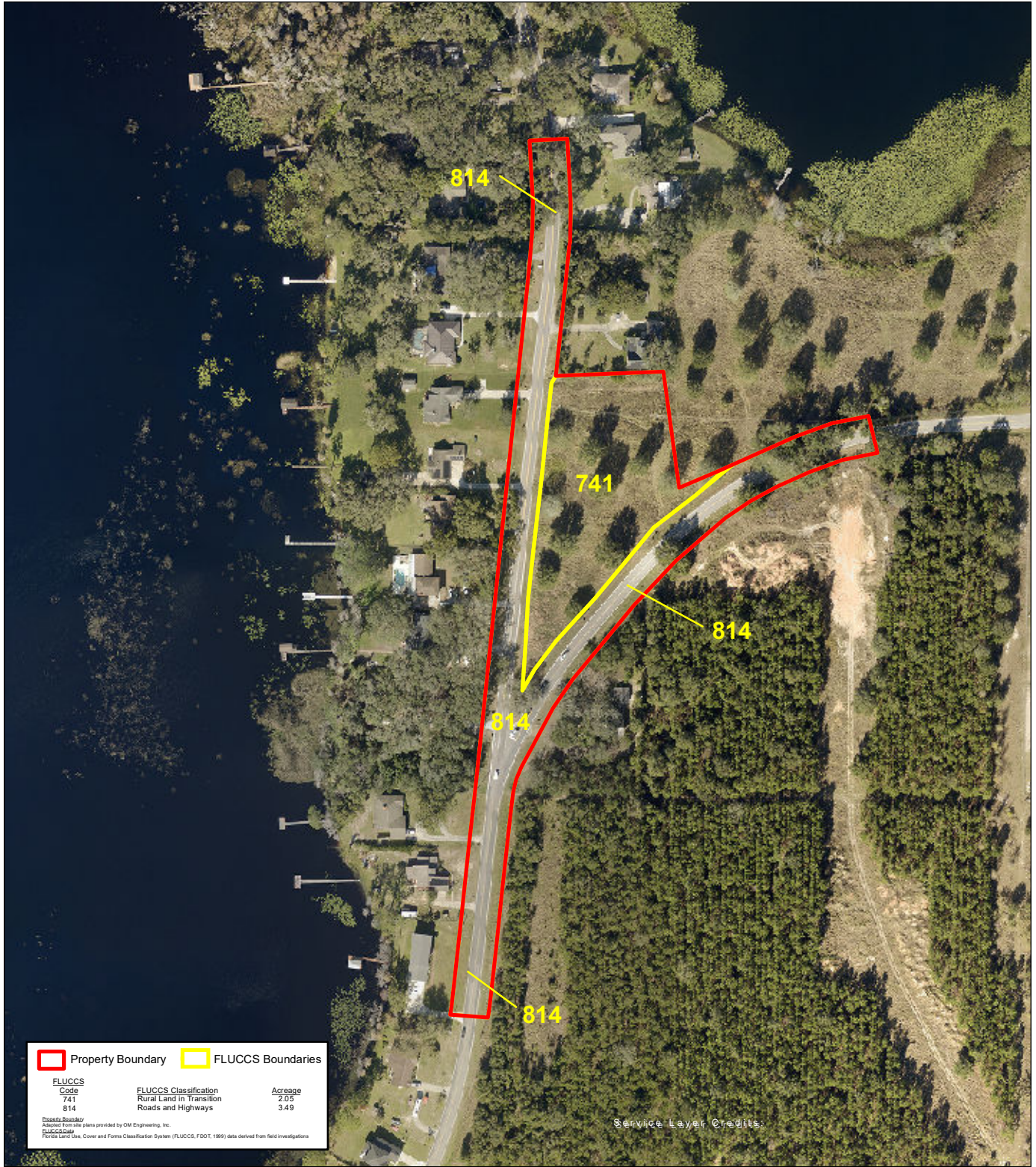


2324 LEU ROAD ORLANDO, FLORIDA 32803
TEL 407.374.3681 CELL 407.405.8725
WWW.THOMSONENV.COM

Figure 4
Soils Map

CR 561 & Lakeshore Roundabout
Lake County, Florida
Section 14, Township 23 S, Range 25 E

Thomson Project No. 23-1403
March 2024



General Location

thomson
ENVIRONMENTAL CONSULTING

2324 LEU ROAD ORLANDO, FLORIDA 32803
TEL 407.374.3681 CELL 407.405.8725
WWW.THOMSONENV.COM

Figure 5
Land Cover Map
CR 561 & Lakeshore Roundabout
Lake County, Florida
Section 14, Township 23 S, Range 25 E

*Thomson Project No. 23-1403
March 2024*