

**CURVE DATA COUNTYROAD 561-S (1)**  
 PI STA. = 42+10.49  
 DELTA = 18° 54' 49"  
 D = 6° 56' 42"  
 T = 137.42  
 L = 272.33  
 R = 825.00  
 PC STA. = 40+73.07  
 PT STA. = 43+45.41  
 DESIGN SPEED = 30 MPH  
 e = NC.

Mentioned before,  
 don't put a shoulder  
 here, but finish F-curb  
 at the driveway.

MATCH LINE SEE PLAN SHEET  
 (2) ROUNDABOUT

THE OFFICIAL RECORD OF THIS SHEET IS THE ELECTRONIC FILE DIGITALLY SIGNED AND SEALED UNDER RULE 61G15-23.004, F.A.C.

REVISIONS	
DATE	DESCRIPTION

**OM ENGINEERING SERVICES, INC.**  
 621 E. WASHINGTON ST., STE 8  
 ORLANDO, FLORIDA 32801  
 PHONE NO. (407) 704-7815

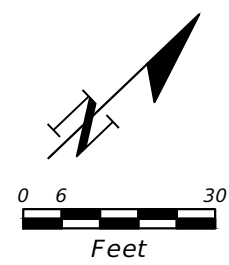
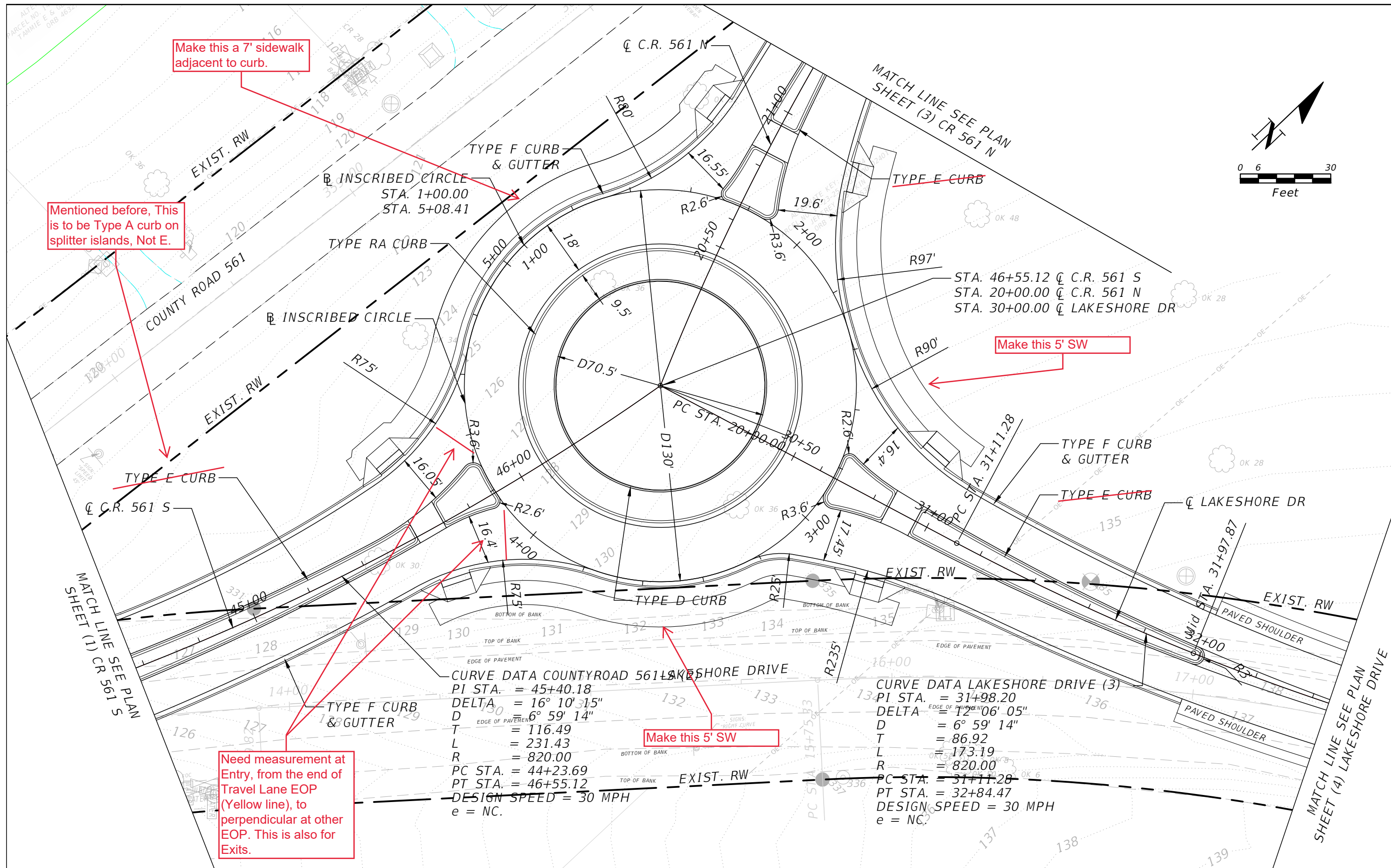
**ENGINEER OF RECORD: RICHARD DEAN BOBLETZ**  
 P.E. LICENSE NUMBER 40049



**CR 561 & LAKESHORE DRIVE ROUNDABOUT**

**PLAN SHEET (1)  
 CR 561 S**

SHEET NO.



**CURVE DATA COUNTY ROAD 561 & LAKESHORE DRIVE**  
 PI STA. = 45+40.18  
 DELTA = 16° 10' 15"  
 D = 6° 59' 14"  
 T = 116.49  
 L = 231.43  
 R = 820.00  
 PC STA. = 44+23.69  
 PT STA. = 46+55.12  
 DESIGN SPEED = 30 MPH  
 e = NC.

**CURVE DATA LAKESHORE DRIVE (3)**  
 PI STA. = 31+98.20  
 DELTA = 12° 06' 05"  
 D = 6° 59' 14"  
 T = 86.92  
 L = 173.19  
 R = 820.00  
 PC STA. = 31+11.28  
 PT STA. = 32+84.47  
 DESIGN SPEED = 30 MPH  
 e = NC.

REVISIONS	
DATE	DESCRIPTION

OM ENGINEERING SERVICES, INC.  
 621 E. WASHINGTON ST., STE 8  
 ORLANDO, FLORIDA 32801  
 PHONE NO. (407) 704-7815

ENGINEER OF RECORD: RICHARD DEAN BOBLETZ  
 P.E. LICENSE NUMBER 40049

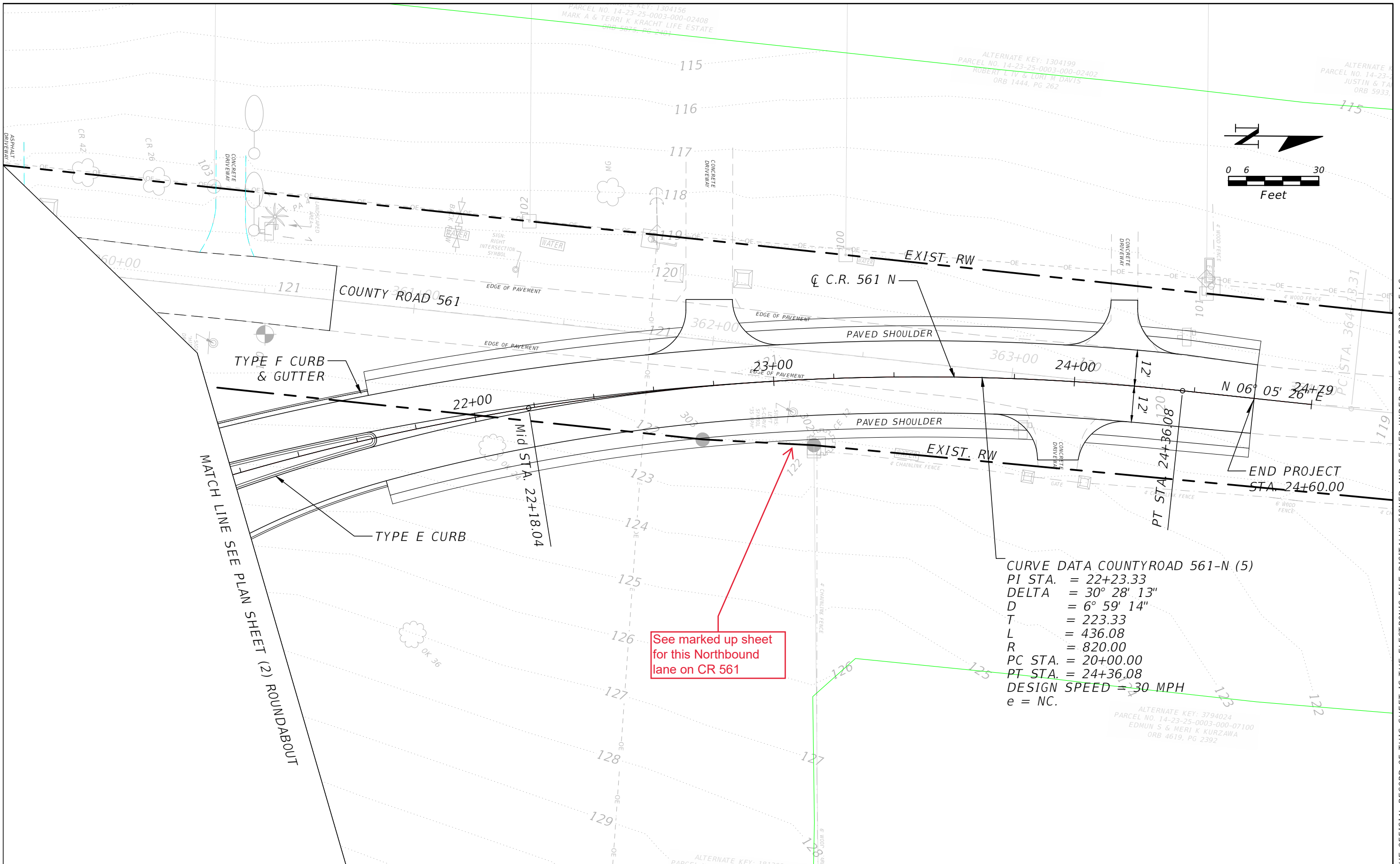


**CR 561 & LAKESHORE DRIVE ROUNDABOUT**

**PLAN SHEET (2) ROUNDABOUT**

SHEET NO.


THE OFFICIAL RECORD OF THIS SHEET IS THE ELECTRONIC FILE DIGITALLY SIGNED AND SEALED UNDER RULE 61G15-23.004, F.A.C.



CURVE DATA COUNTYROAD 561-N (5)  
 PI STA. = 22+23.33  
 DELTA = 30° 28' 13"  
 D = 6° 59' 14"  
 T = 223.33  
 L = 436.08  
 R = 820.00  
 PC STA. = 20+00.00  
 PT STA. = 24+36.08  
 DESIGN SPEED = 30 MPH  
 e = NC.

See marked up sheet  
 for this Northbound  
 lane on CR 561

REVISIONS	
DATE	DESCRIPTION


**OM ENGINEERING SERVICES, INC.**  
 621 E. WASHINGTON ST., STE 8  
 ORLANDO, FLORIDA 32801  
 PHONE NO. (407) 704-7815  
 ENGINEER OF RECORD: RICHARD DEAN BOBLETZ  
 P.E. LICENSE NUMBER 40049

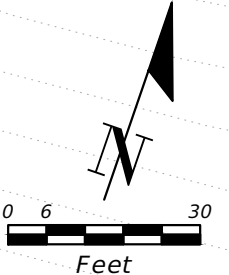
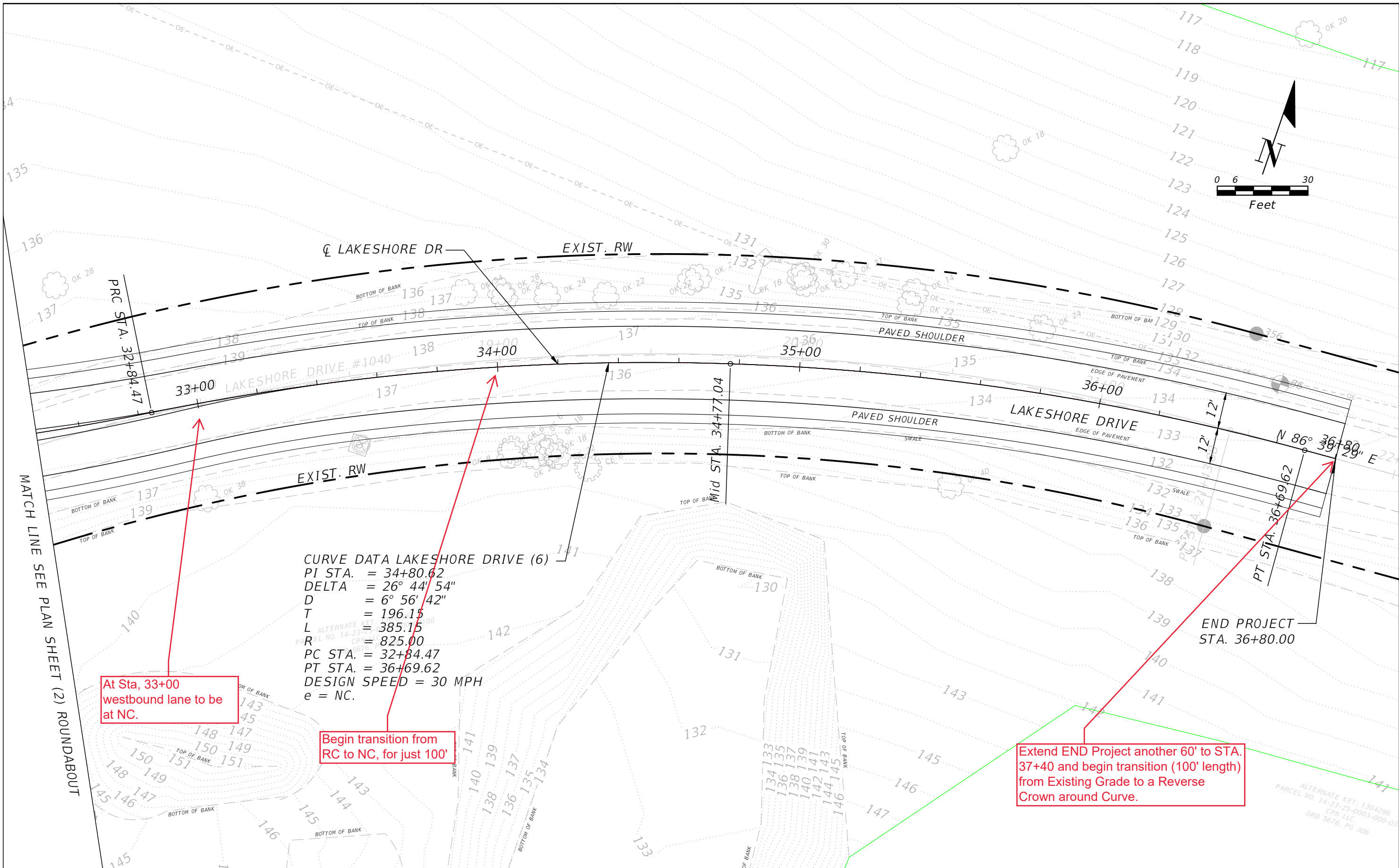


**CR 561 & LAKESHORE  
 DRIVE ROUNDABOUT**

**PLAN SHEET (3)  
 CR 561 N**

SHEET NO.

THE OFFICIAL RECORD OF THIS SHEET IS THE ELECTRONIC FILE DIGITALLY SIGNED AND SEALED UNDER RULE 61G15-23.004, F.A.C.




MATCH LINE SEE PLAN SHEET (2) ROUNDABOUT

THE OFFICIAL RECORD OF THIS SHEET IS THE ELECTRONIC FILE DIGITALLY SIGNED AND SEALED UNDER RULE 61G15-23.004, F.A.C.

ALTERNATE KEY: 1304296  
 PARCEL NO. 14-23-25-0003-000-03  
 CPN LLC  
 ORB 5676, PG 306

REVISIONS	
DATE	DESCRIPTION


**OM ENGINEERING SERVICES, INC.**  
 621 E. WASHINGTON ST., STE 8  
 ORLANDO, FLORIDA 32801  
 PHONE NO. (407) 704-7815  
 ENGINEER OF RECORD: RICHARD DEAN BOBLETZ  
 P.E. LICENSE NUMBER 40049

  
 REAL FLORIDA - REAL CLOSE

**CR 561 & LAKESHORE DRIVE ROUNDABOUT**

**PLAN SHEET (4)  
 LAKESHORE DRIVE**

SHEET NO.