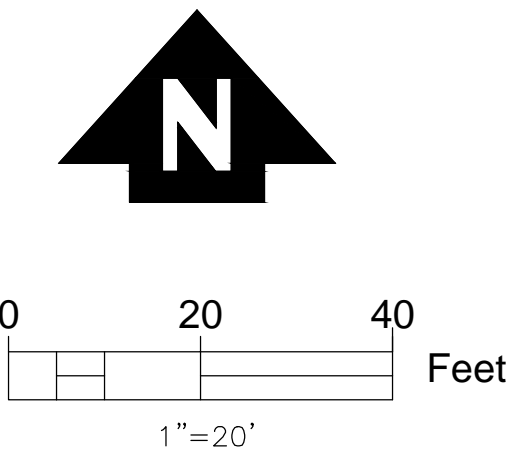
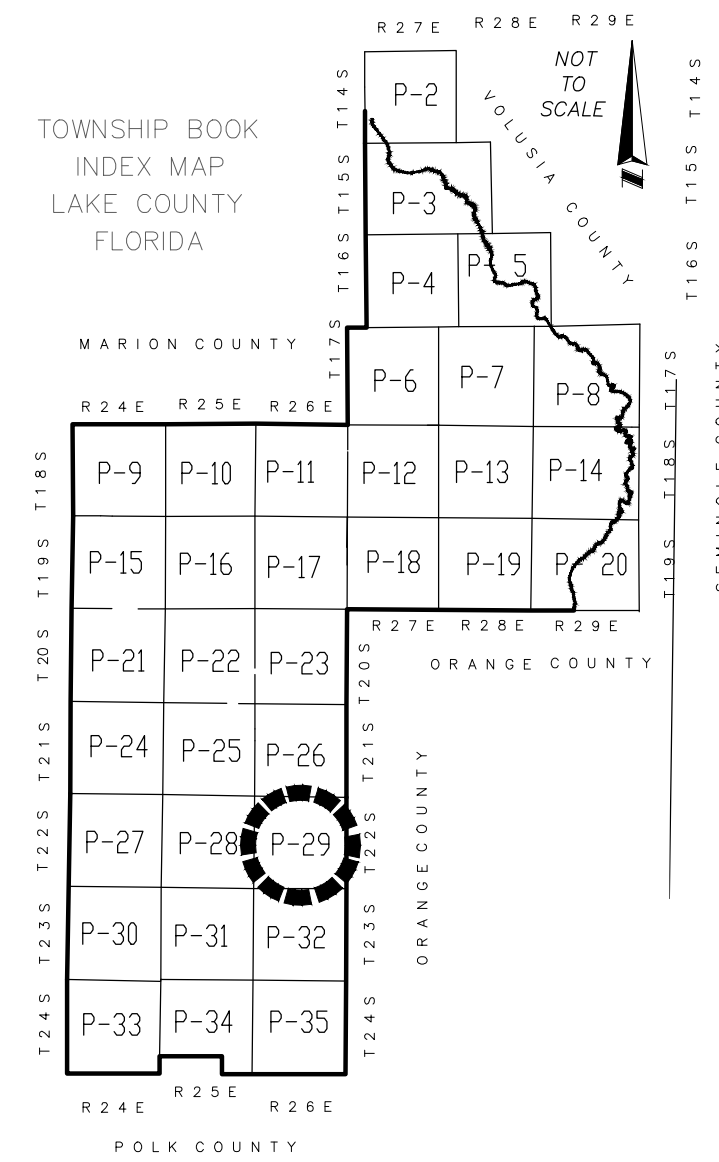
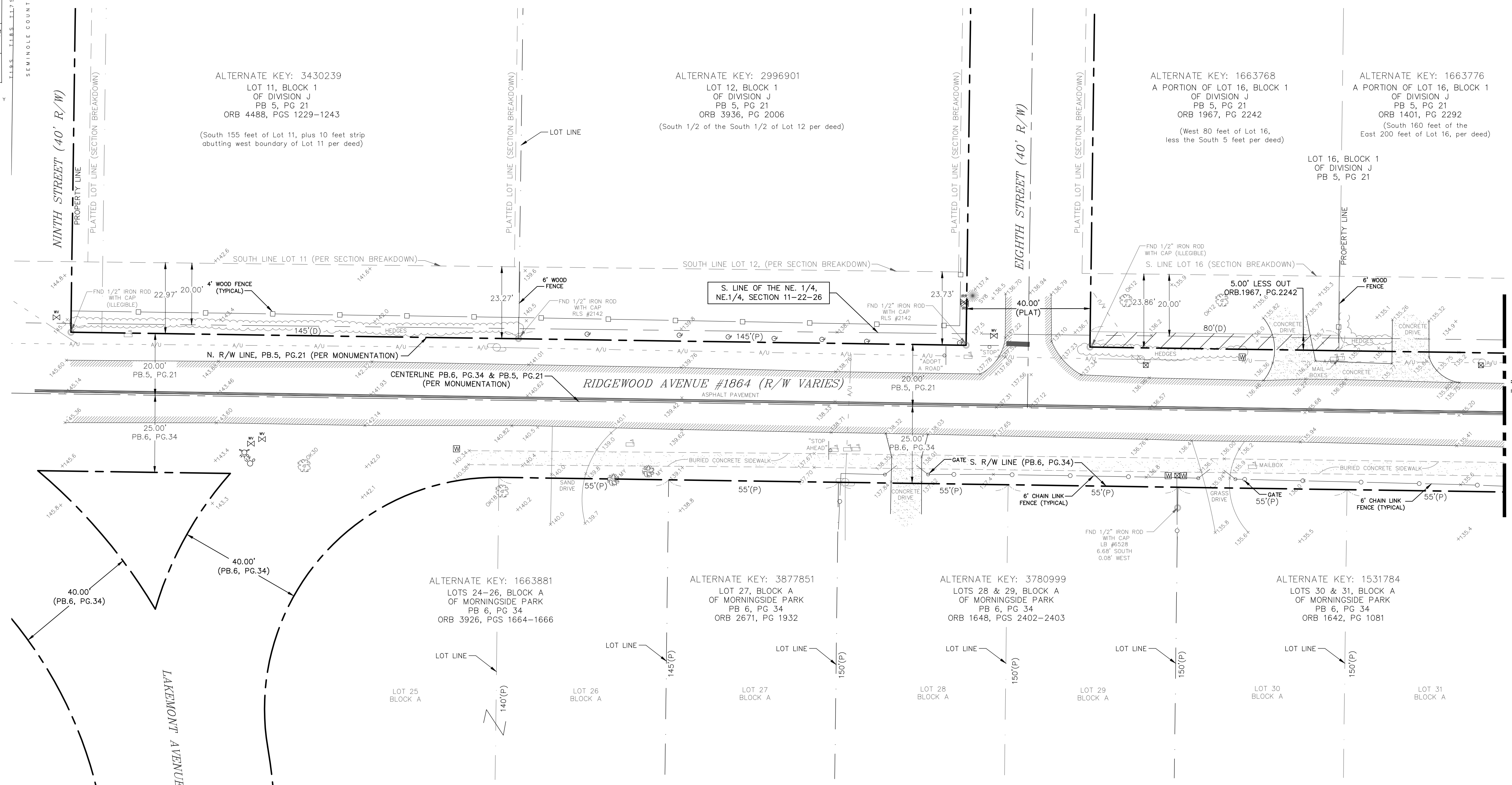


LOCATION MAP



DESCRIPTION:
A portion of Section 11, Township 22 South, Range 26 East, Lake County, Florida.



TREE LEGEND

- = CRAPLE MYRTLE
 - = OAK TREE
 - = SYCAMORE TREE
- TREE SIZE SHOWN IS THE TREE DIAMETER IN INCHES

SYMBOL LEGEND

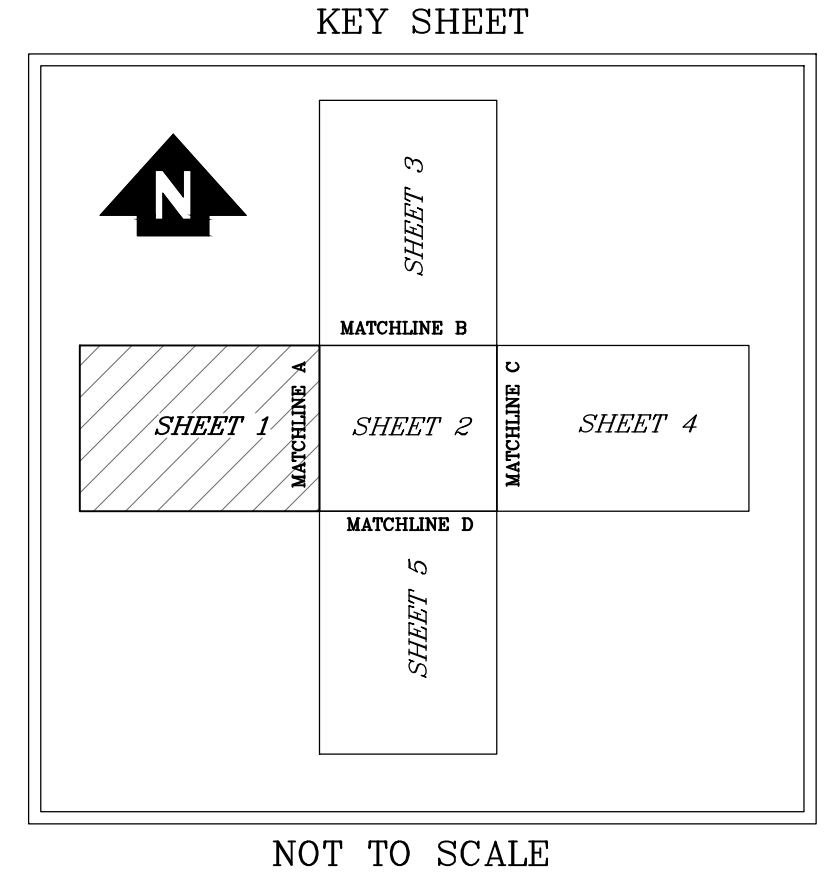
- = ELECTRIC BOX
- = FIRE HYDRANT
- = IRRIGATION VALVE
- = MAIL BOX
- = POWER POLE
- = ROAD SIGN
- = SPRINKLER
- = TELEPHONE BOX
- = UTILITY MARKER
- = WATER METER
- = WATER VALVE

ABBREVIATIONS

- A/U = AERIAL UTILITIES
- ALT = ALTERNATE
- (D) = DEED
- FND = FOUND
- LS = LICENSED SURVEYOR
- ORB = OFFICIAL RECORD BOOK
- (P) = PLATTED
- PB = PLAT BOOK
- PG = PAGE
- S = SECTION
- ST = STREET
- T = TOWNSHIP
- R = RANGE
- RLS = REGISTERED LAND SURVEYOR
- R/W = RIGHT OF WAY

Surveyor's Report:

1. Utility locations shown or noted are based on surface evidence, paint marks and/or flags located in the field and should be confirmed with the governing utility companies for this area prior to site design by the engineer or construction by the contractor.
2. Right of way and subdivision data were derived from public records without benefit of a title search or report, subject to easements, restrictions, conveyances and reservations that may not be noted or depicted hereon.
3. Measurement methods used for this survey meet Standards of Practice for Land Surveying chapter 5J-17.050-.052 requirements.
4. Unless otherwise noted or shown hereon, unobstructed, above ground improvements were located. Underground improvements, such as foundations and utilities, were not located.
5. Bearings and distances shown hereon are measured unless otherwise noted.
6. The survey map and report or the copies thereof are not valid unless it bears the signature and original raised seal of the Florida Licensed Surveyor and Mapper identified below.
7. Features shown by symbol as indicated in the legend are not to scale.
8. Bearings shown hereon reference Lake County Published Control Points "LK29" and "LC02," and are relative to North American Datum, NAD 1983, 1990 adjustment, State Plane Coordinate System, Florida East Zone, with a reference bearing of North 00°18'18" West. Distances shown are GRID distances.
9. Vertical information shown hereon refers to National Geodetic Survey published Benchmark "A 429", having a published elevation of 93.54', North American Vertical Datum of 1988 (NAVD88).
10. Dimensions are shown in United States Standard Survey Feet and decimals thereof.
11. Positional accuracy meets National Geodetic Survey, NGS Third Order, Class One, specifically 1:10,000.
13. Additions or deletions to survey maps or reports by other than the signing party or parties is prohibited without written consent of the signing party or parties.



NOT TO SCALE



LAKE COUNTY
DEPARTMENT OF PUBLIC WORKS
ENGINEERING DIVISION
SURVEYING SECTION
437 ARDICE AVENUE
EUSTIS, FLORIDA 32726

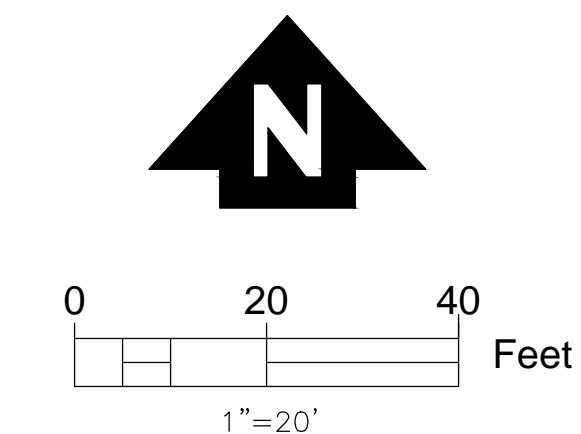
SECTION - 11	TOWNSHIP - 22S	RANGE - 26E
SURVEYED: MC	DATE: 1/30/14	
FIELD BOOK: 203	PAGE: 49-50	
DRAWN: MC	DATE: 8/28/14	
APPROVED: RJT	DATE:	
REV1	DATE:	
REV2	DATE:	

TOPOGRAPHIC SURVEY
COUNTY ROAD 455 (#2354) &
RIDGEWOOD AVENUE (#1864)
SECTION 11, TOWNSHIP 22S., RANGE 26E.
LAKE COUNTY, FLORIDA

CAD NO.: 14003SAC.DWG SHEET: 1 of 5

SURVEYOR AND MAPPER
IN RESPONSIBLE CHARGE
DRAFT COPY
LAKE COUNTY USE ONLY

RICK J. TRAVIS
PROFESSIONAL SURVEYOR AND MAPPER
FLORIDA REGISTRATION NO. LS5944



TREE LEGEND

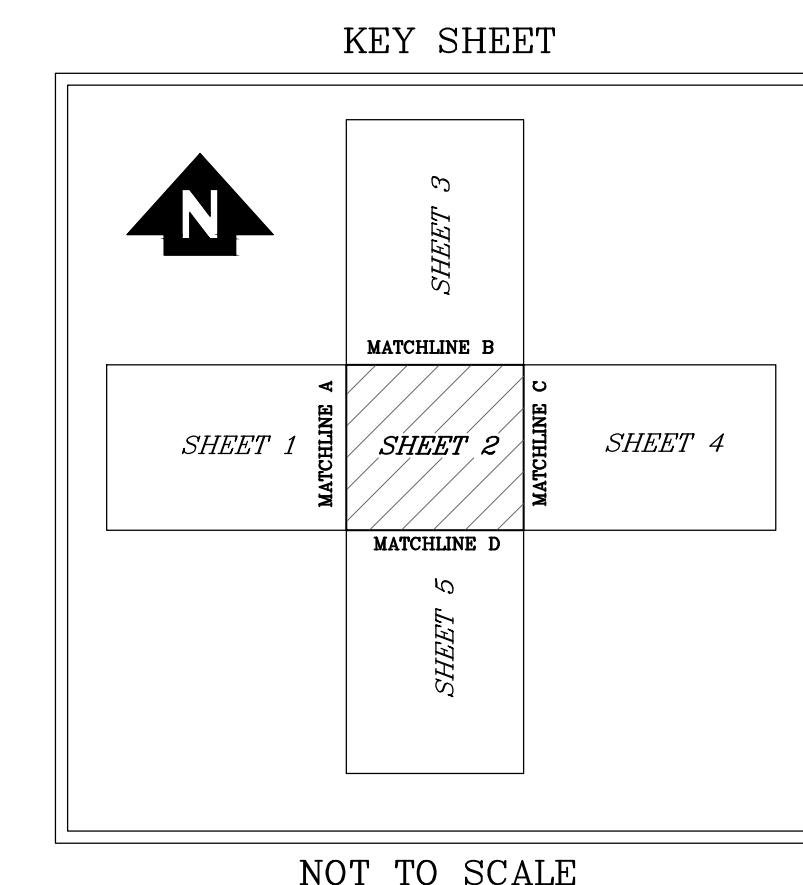
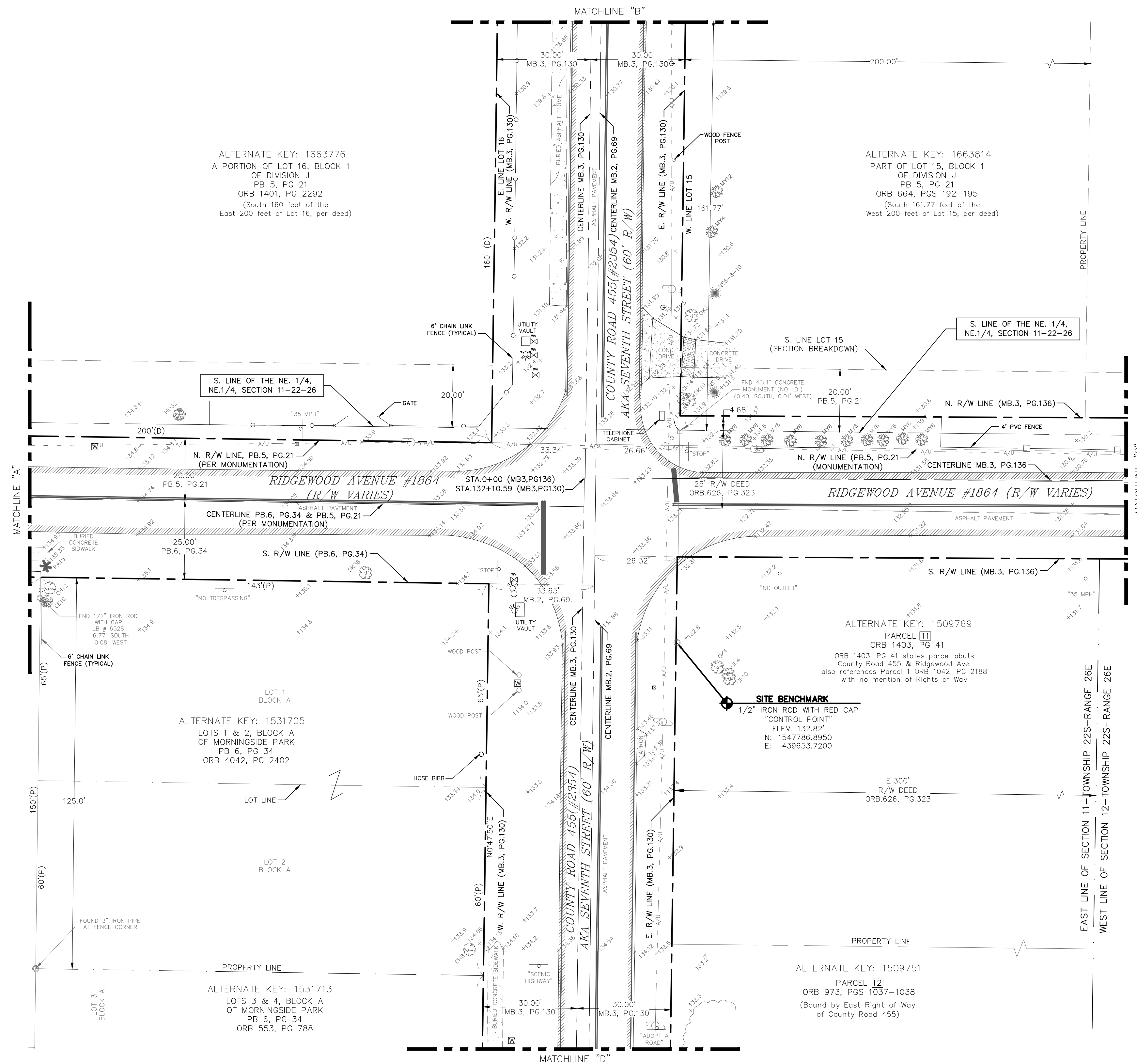
- = CHERRY TREE
 - = CHINABERRY TREE
 - = CRAPE MYRTLE
 - = HOLLY TREE
 - = NON-SPECIFIED TREE
 - = OAK TREE
- TREE SIZE SHOWN IS THE TREE DIAMETER IN INCHES

SYMBOL LEGEND

- = ELECTRIC BOX
- = FIRE HYDRANT
- = IRRIGATION VALVE
- = MAIL BOX
- = POWER POLE
- = ROAD SIGN
- = SPRINKLER
- = TELEPHONE BOX
- = UTILITY MARKER
- = WATER METER
- = WATER VALVE

ABBREVIATIONS

- A/U = AERIAL UTILITIES
- ALT = ALTERNATE
- (D) = DEED
- FND = FOUND
- LS = LICENSED SURVEYOR
- ORB = OFFICIAL RECORD BOOK
- (P) = PLATTED
- PB = PLAT BOOK
- PG = PAGE
- S = SECTION
- ST = STREET
- T = TOWNSHIP
- R = RANGE
- RLS = REGISTERED LAND SURVEYOR
- R/W = RIGHT OF WAY



NOT TO SCALE



LAKE COUNTY
DEPARTMENT OF PUBLIC WORKS
 ENGINEERING DIVISION
 SURVEYING SECTION
 437 ARDICE AVENUE
 EUSTIS, FLORIDA 32726

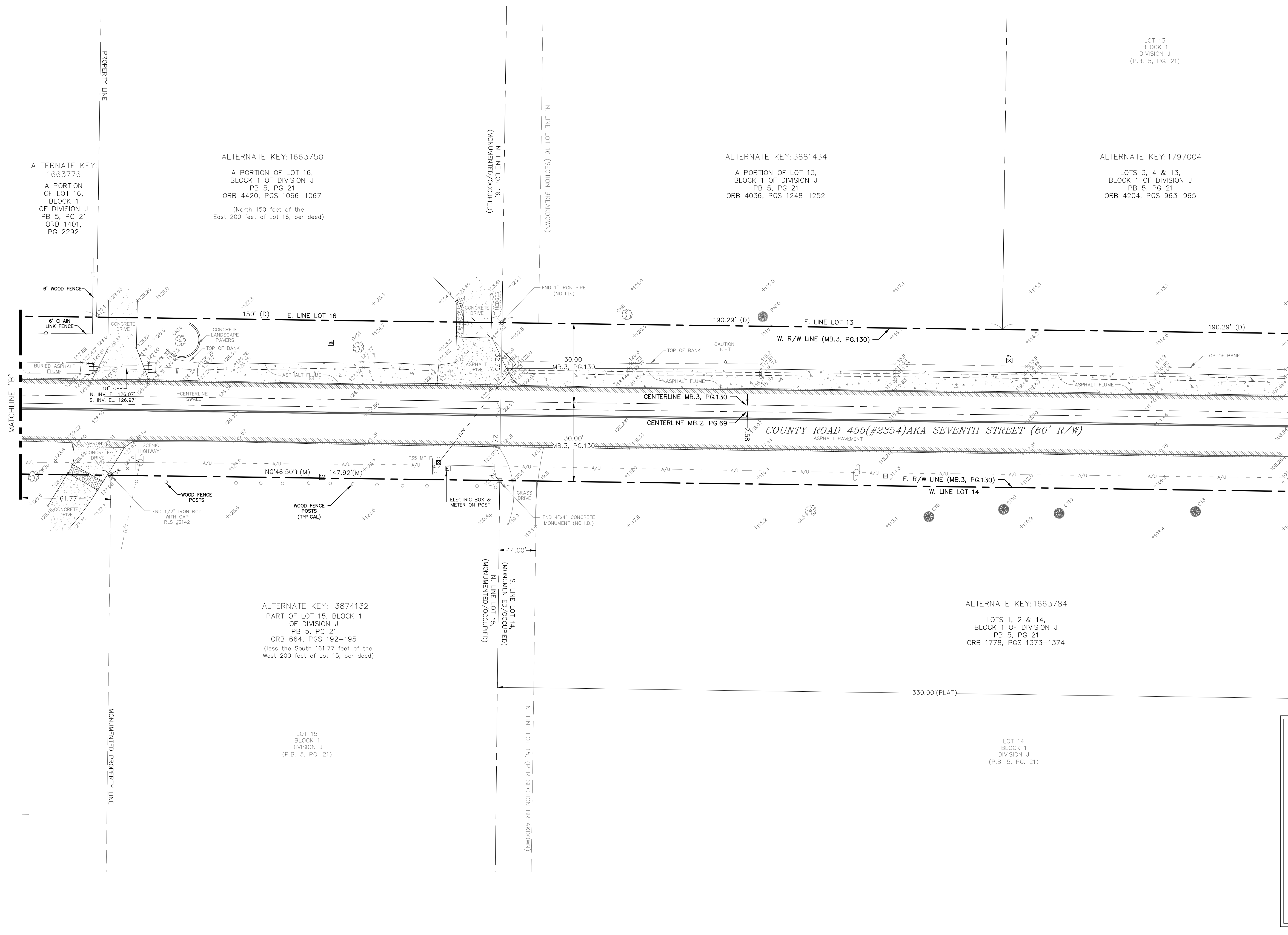
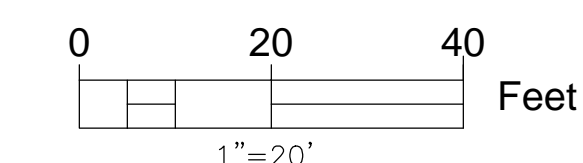
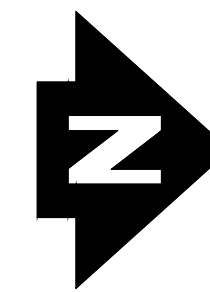
SECTION - 11	TOWNSHIP - 22S	RANGE - 26E
SURVEYED: MC	DATE: 1/30/14	
FIELD BOOK: 203	PAGE: 49-50	
DRAWN: MC	DATE: 8/28/14	
APPROVED: RJT	DATE:	
REV1	DATE:	
REV2	DATE:	

TOPOGRAPHIC SURVEY
COUNTY ROAD 455 (#2354) &
RIDGEWOOD AVENUE (#1864)
SECTION 11, TOWNSHIP 22S., RANGE 26E.
LAKE COUNTY, FLORIDA

NOTE: SEE SHEET 1 OF 5 FOR SURVEYOR'S REPORT

CAD NO.: 14003SAC.DWG

SHEET: 2 of 5



TREE LEGEND

- = CHINABERRY TREE
 - = CITRUS TREE
 - = OAK TREE
 - = PINE TREE
- TREE SIZE SHOWN IS THE TREE DIAMETER IN INCHES

SYMBOL LEGEND

- = ELECTRIC BOX
- = FIRE HYDRANT
- = GUY WIRE
- = IRRIGATION VALVE
- = MAIL BOX
- = POWER POLE
- = ROAD SIGN
- = SPRINKLER
- = TELEPHONE BOX
- = UTILITY MARKER
- = WATER METER
- = WATER VALVE

ABBREVIATIONS

- A/U = AERIAL UTILITIES
- ALT = ALTERNATE
- CPP = CORRUGATED PLASTIC PIPE
- (D) = DEED
- FND = FOUND
- LS = LICENSED SURVEYOR
- ORB = OFFICIAL RECORD BOOK
- (P) = PLATTED
- PB = PLAT BOOK
- PG = PAGE
- S = SECTION
- ST = STREET
- T = TOWNSHIP
- R = RANGE
- RLS = REGISTERED LAND SURVEYOR
- R/W = RIGHT OF WAY



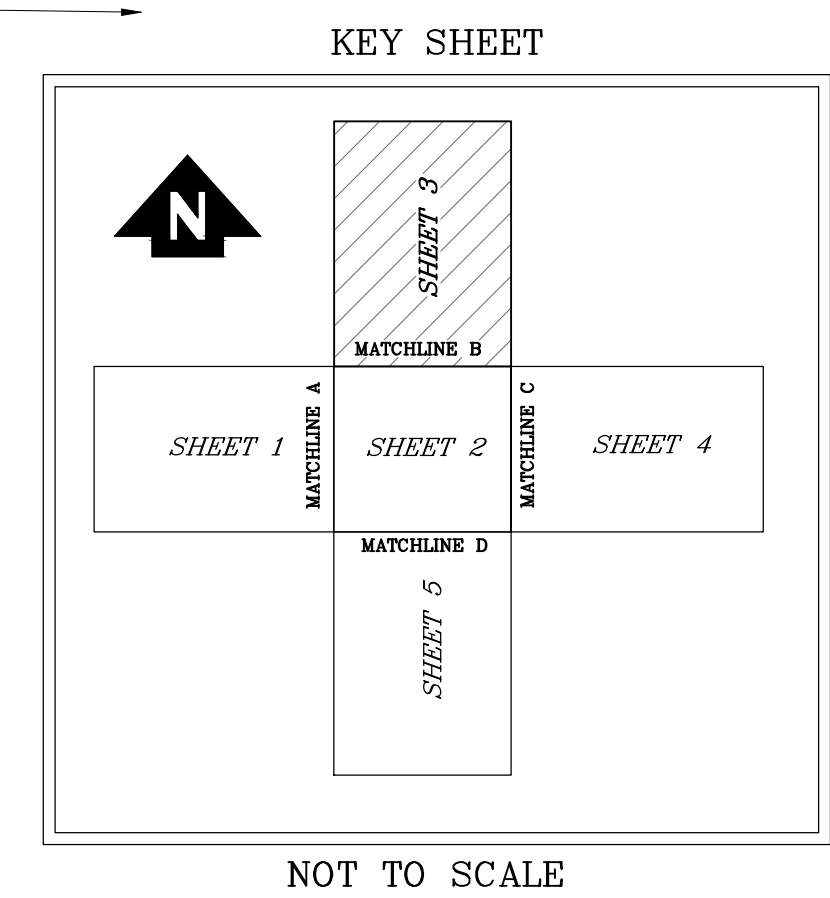
LAKE COUNTY
DEPARTMENT OF PUBLIC WORKS
 ENGINEERING DIVISION
 SURVEYING SECTION
 437 ARDICE AVENUE
 EUSTIS, FLORIDA 32726

SECTION - 11	TOWNSHIP - 22S	RANGE - 26E
SURVEYED: MC	DATE: 1/30/14	
FIELD BOOK: 203	PAGE: 49-50	
DRAWN: MC	DATE: 8/28/14	
APPROVED: RJT	DATE:	
REV1	DATE:	
REV2	DATE:	

TOPOGRAPHIC SURVEY
COUNTY ROAD 455 (#2354) &
RIDGEWOOD AVENUE (#1864)
SECTION 11, TOWNSHIP 22S., RANGE 26E.
LAKE COUNTY, FLORIDA

CAD NO.: 14003SAC.DWG SHEET: 3 of 5

NOTE: SEE SHEET 1 OF 5 FOR SURVEYOR'S REPORT



ALTERNATE KEY: 1663776
 A PORTION OF LOT 16, BLOCK 1 OF DIVISION J
 PB 5, PG 21
 ORB 1401, PG 2292

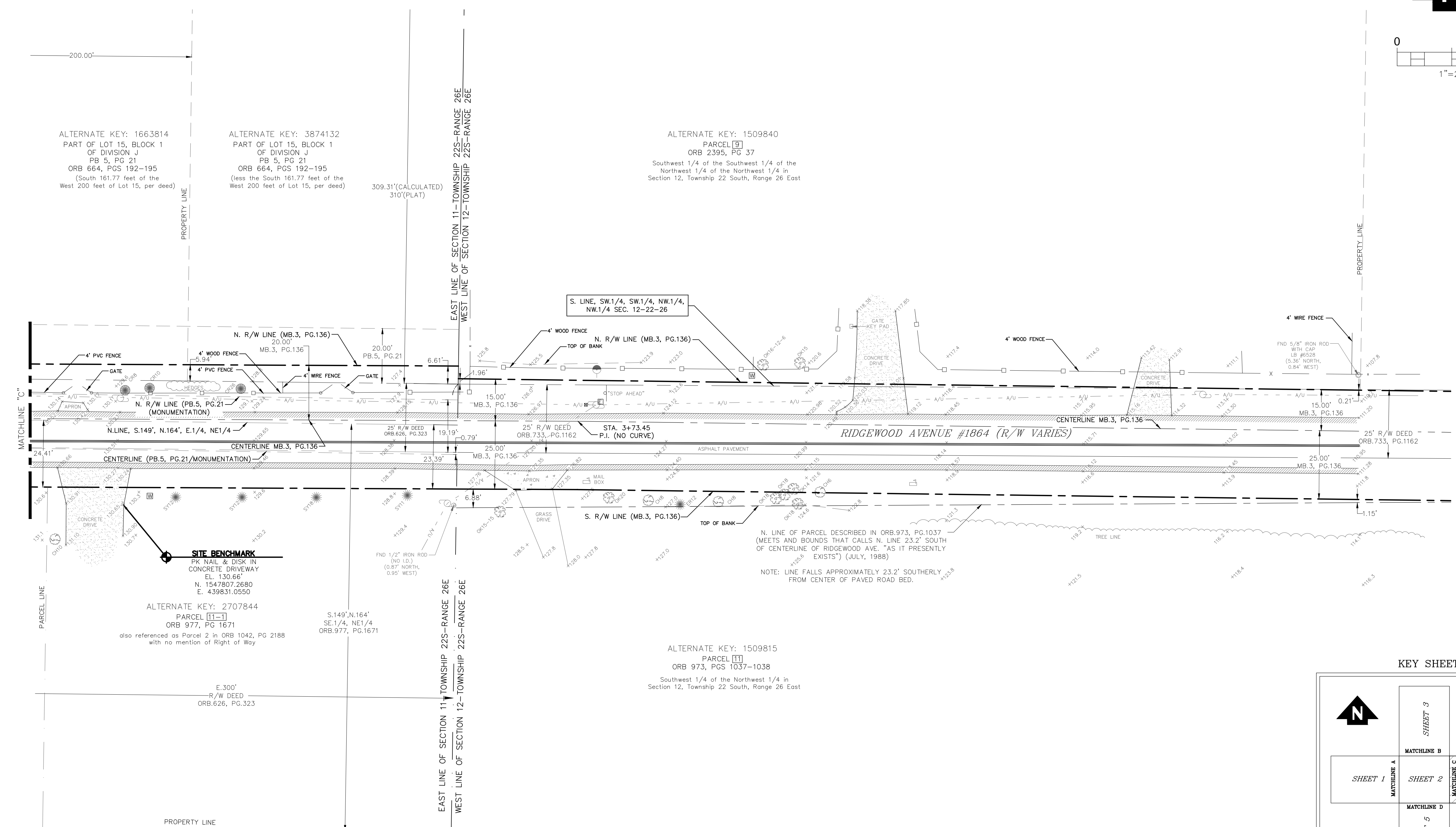
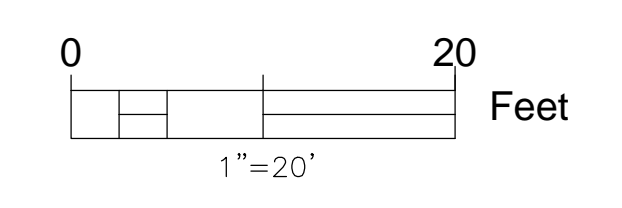
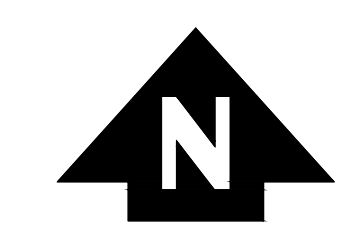
ALTERNATE KEY: 1663750
 A PORTION OF LOT 16, BLOCK 1 OF DIVISION J
 PB 5, PG 21
 ORB 4420, PGS 1066-1067
 (North 150 feet of the East 200 feet of Lot 16, per deed)

ALTERNATE KEY: 3881434
 A PORTION OF LOT 13, BLOCK 1 OF DIVISION J
 PB 5, PG 21
 ORB 4036, PGS 1248-1252

ALTERNATE KEY: 1797004
 LOTS 3, 4 & 13, BLOCK 1 OF DIVISION J
 PB 5, PG 21
 ORB 4204, PGS 963-965

ALTERNATE KEY: 3874132
 PART OF LOT 15, BLOCK 1 OF DIVISION J
 PB 5, PG 21
 ORB 664, PGS 192-195
 (less the South 161.77 feet of the West 200 feet of Lot 15, per deed)

ALTERNATE KEY: 1663784
 LOTS 1, 2 & 14, BLOCK 1 OF DIVISION J
 PB 5, PG 21
 ORB 1778, PGS 1373-1374



TREE LEGEND

- = CAMPHOR TREE
- = EAR TREE
- = OAK TREE
- = SYCAMORE TREE

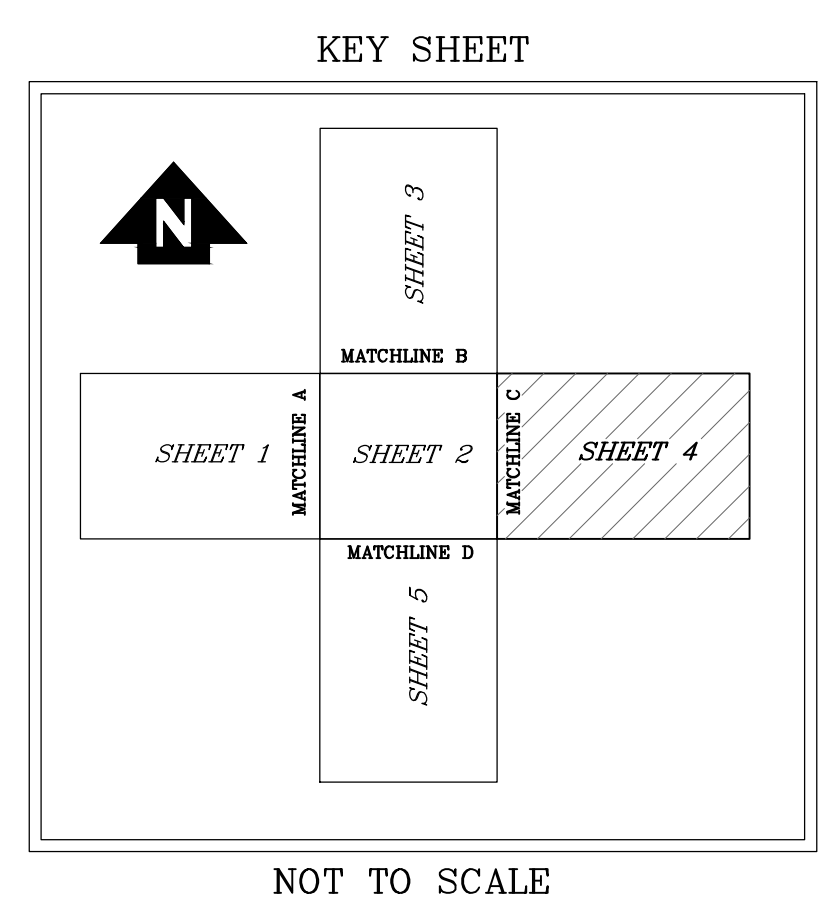
TREE SIZE SHOWN IS THE TREE DIAMETER IN INCHES

SYMBOL LEGEND

- = ELECTRIC BOX
- = FIRE HYDRANT
- = IRRIGATION VALVE
- = MAIL BOX
- = POWER POLE
- = ROAD SIGN
- = SPRINKLER
- = TELEPHONE BOX
- = UTILITY MARKER
- = WATER METER
- = WATER VALVE

ABBREVIATIONS

- A/U = AERIAL UTILITIES
- ALT = ALTERNATE
- (D) = DEED
- FND = FOUND
- LS = LICENSED SURVEYOR
- ORB = OFFICIAL RECORD BOOK
- (P) = PLATTED
- PB = PLATTED BOOK
- PG = PAGE
- S = SECTION
- ST = STREET
- T = TOWNSHIP
- R = RANGE
- RLS = REGISTERED LAND SURVEYOR
- R/W = RIGHT OF WAY



LAKE COUNTY
DEPARTMENT OF PUBLIC WORKS
 ENGINEERING DIVISION
 SURVEYING SECTION
 437 ARDICE AVENUE
 EUSTIS, FLORIDA 32726

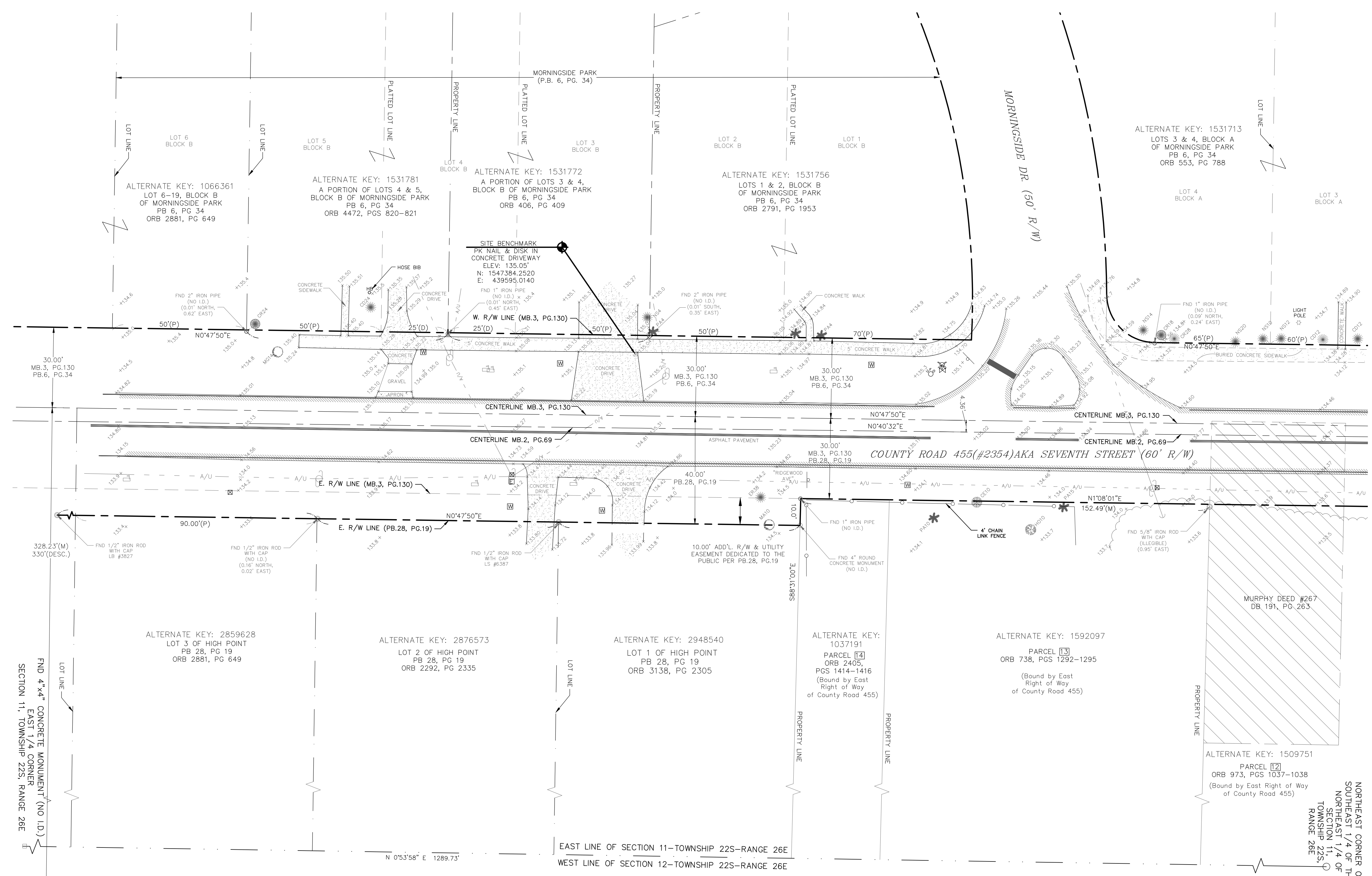
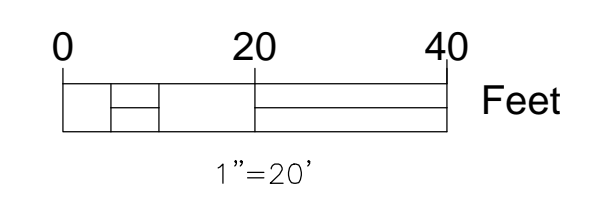
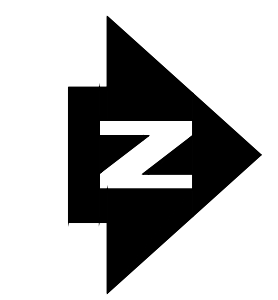
SECTION - 11	TOWNSHIP - 22S	RANGE - 26E
SURVEYED: MC	DATE: 1/30/14	
FIELD BOOK: 203	PAGE: 49-50	
DRAWN: MC	DATE: 8/28/14	
APPROVED: RJT	DATE:	
REV1	DATE:	
REV2	DATE:	

TOPOGRAPHIC SURVEY
COUNTY ROAD 455 (#2354) &
RIDGEWOOD AVENUE (#1864)
SECTION 11, TOWNSHIP 22S., RANGE 26E.
LAKE COUNTY, FLORIDA

NOTE: SEE SHEET 1 OF 5 FOR SURVEYOR'S REPORT

CAD NO.: 14003SAC.DWG

SHEET: 4 of 5



TREE LEGEND

- = CAMPHOR TREE
- = CEDAR TREE
- = CHERRY TREE
- = EAR TREE
- = HOLLY TREE
- = MAPLE TREE
- = PALM TREE

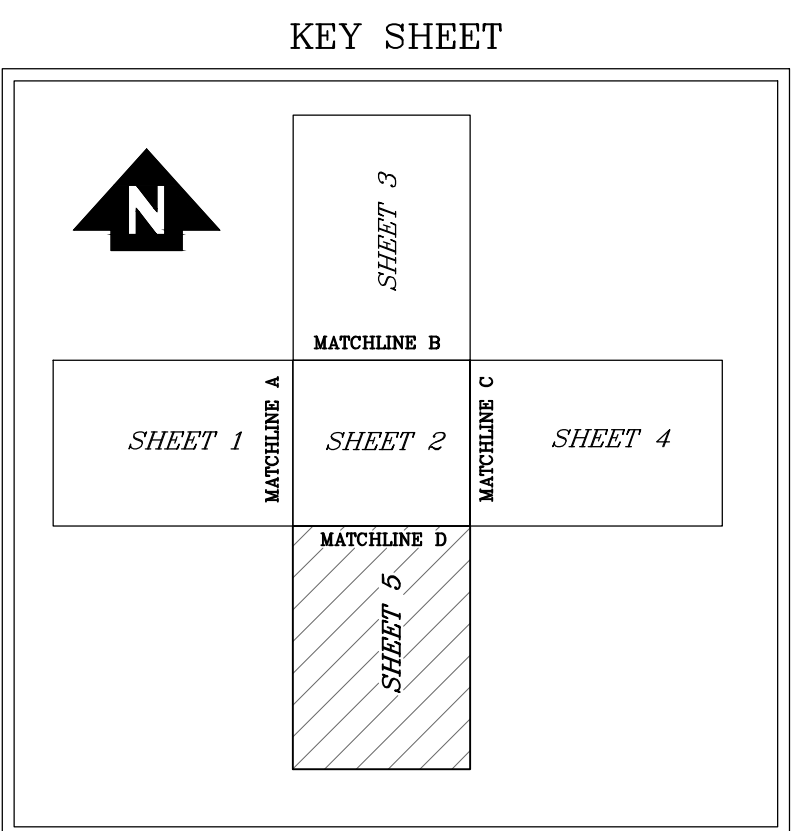
TREE SIZE SHOWN IS THE TREE DIAMETER IN INCHES

SYMBOL LEGEND

- = ELECTRIC BOX
- = FIRE HYDRANT
- = IRRIGATION VALVE
- = MAIL BOX
- = POWER POLE
- = ROAD SIGN
- = SPRINKLER
- = TELEPHONE BOX
- = UTILITY MARKER
- = WATER METER
- = WATER VALVE

ABBREVIATIONS

- A/U = AERIAL UTILITIES
- ALT = ALTERNATE
- (D) = DEED
- FND = FOUND
- LS = LICENSED SURVEYOR
- ORB = OFFICIAL RECORD BOOK
- (P) = PLATTED
- PB = PLAT BOOK
- PG = PAGE
- S = SECTION
- ST = STREET
- T = TOWNSHIP
- R = RANGE
- RLS = REGISTERED LAND SURVEYOR
- R/W = RIGHT OF WAY



NOT TO SCALE



LAKE COUNTY
DEPARTMENT OF PUBLIC WORKS
 ENGINEERING DIVISION
 SURVEYING SECTION
 437 ARDICE AVENUE
 EUSTIS, FLORIDA 32726

SECTION - 11	TOWNSHIP - 22S	RANGE - 26E
SURVEYED: MC	DATE: 1/30/14	
FIELD BOOK: 203	PAGE: 49-50	
DRAWN: MC	DATE: 8/28/14	
APPROVED: RJT	DATE:	
REV1	DATE:	
REV2	DATE:	

TOPOGRAPHIC SURVEY
COUNTY ROAD 455 (#2354) &
RIDGEWOOD AVENUE (#1864)
SECTION 11, TOWNSHIP 22S., RANGE 26E.
LAKE COUNTY, FLORIDA

CAD NO.: 14003SAC.DWG SHEET: 5 of 5

NOTE: SEE SHEET 1 OF 5 FOR SURVEYOR'S REPORT