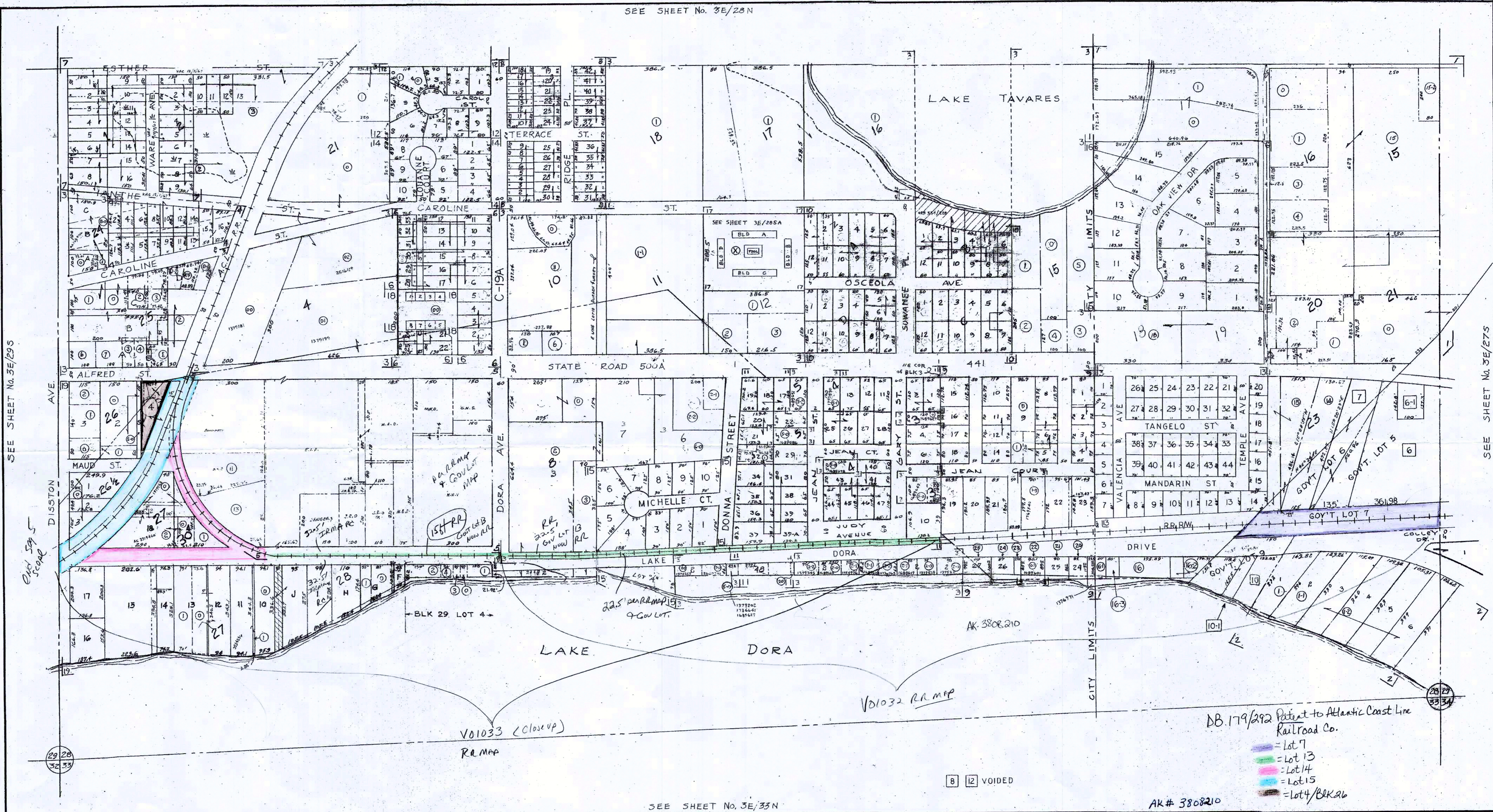


THIS MAP HAS BEEN COMPILED FROM THE MOST AUTHENTIC INFORMATION AVAILABLE AND NEITHER LAKE COUNTY NOR HUNNICUTT AND ASSOCIATES, INC. ASSUMES RESPONSIBILITY FOR ERRORS OR OMISSIONS CONTAINED HEREON.

- 2-26-08 U
- 4-9-08 U
- 4-24-08 U
- 12-3-09 U
- 12-7-09 U
- 5-6-10 U
- 12-14-10 U
- 4-10-12 U
- 4-16-12 U
- 4-18-12 U

SEE SHEET No. 3E/28N



SEE SHEET No. 3E/29S

SEE SHEET No. 3E/27S

SUBDIVISION INDEX		P.B.	P.G.
NO.	NAME		
1.	HEWITT'S, S.B.	1	52
2.	TAVADORA SHORES	12	25
<b>TAVARES</b>			
3.	ABRAMS, ALEX. ST. CLAIR EXT'N	1	53
4.	OF BLK 24 LOTS 150	11	34

NO.	NAME	P.B.	P.G.
5.	A REPL'ET OF BAYVIEW	11	84
6.	HAMILTON	4	31
7.	WARE SUB. OF ALEX. - ST. CLAIR & ABRAMS EXTENSION	6	40
8.	KOCH TERR.	8	26

NO.	NAME	P.B.	P.G.
10.	MINNETONKA	6	73
11.	ORANGE ACRES	15	27
12.	DERK BRONS SUB.	15	8
13.	LA DORA MANOR	18	11
14.	JOSEPH CARLTON SUB.	23	11
15.	LAKE DORA SHORES	23	38

NO.	NAME	P.B.	P.G.
16.	OAK VIEW ON THE LAKE	34	31, 32
17.	LAKEVIEW CONDO	CB	20
18.	OAK VILLAGE CONDO ORB 763	2045	
19.	ST CLAIR-ABRAMS EXT'N SUPPLEMENTAL PLAT GOV. I	28	



ASSESSMENT MAP  
**LAKE COUNTY, FLORIDA**  
 COMPILED & DRAWN BY  
 HUNNICUTT & ASSOCIATES, INC.  
 ST. PETERSBURG, FLORIDA

SECTION 5 1/2 of 28  
 TOWNSHIP 19S  
 RANGE 26E  
 COMPILED & DRAWN, 1961  
 REVISION DATES  
 TRACING PRINT

SHEET NUMBER  
**3E**  
 28S

SEE SHEET No. 3E/33N

AK # 3808210

8 12 VOIDED

DB 179/292 Patent to Atlantic Coast Line Railroad Co.

- Lot 7
- Lot 13
- Lot 14
- Lot 15
- Lot 4/Block 26

Encl 594 5  
 Scale

V01033 (Close up)  
 RR MAP

V01032 RR MAP

AK 3808210