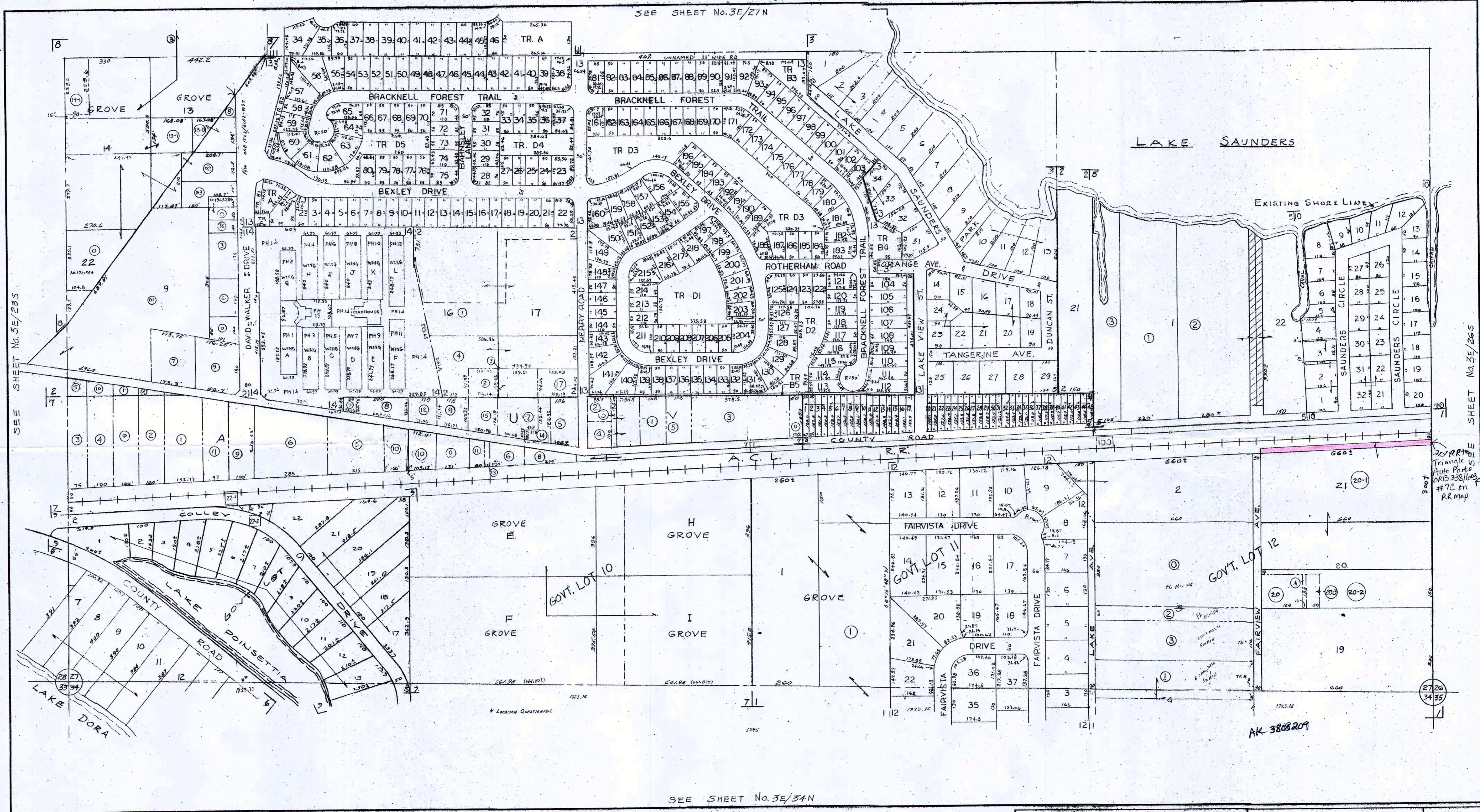


THIS MAP HAS BEEN COMPILED FROM THE MOST AUTHENTIC INFORMATION AVAILABLE AND NEITHER LAKE COUNTY NOR HUNNICUTT AND ASSOCIATES, INC. ASSUMES RESPONSIBILITY FOR ERRORS OR OMISSIONS CONTAINED HEREON.

- 4-24-08 U
- 6-17-08 U
- 7-21-08 U
- 8-15-08 U
- 9-1-09 U
- 9-8-09 U
- 3-20-12 S
- 3-27-12 U



SEE SHEET No. 3E/27N

SEE SHEET No. 3E/34N

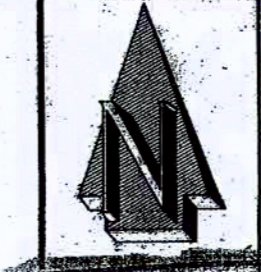
SEE SHEET No. 3E/28S

SHEET No. 3E/26S

No.	SUBDIVISION NAME	INDEX P.B.	INDEX PG.	No.	SUBDIVISION NAME	INDEX P.B.	INDEX PG.
1	FAIRVIEW	5	14	8	S.B. HEWITTS SUB.	1	52
2	JAMES M. CONNER SUB.	1	32	9	TAVADORA SHORES, FIRST ADD	15	26
3	LAKE SAUNDERS MANOR	13	20	10	POMEROSA	16	14
4	OAK CREST	C	28	11	CHELSEA OAKS	53	89-91
5	McNAUGHT'S SUB.	B	14 (4-2)	12	GRAND OAK ESTATES	54	50-51
6	TAVADORA SHORES	12	25	13	CHELSEA OAKS SOUTH	59	84-88

14 SHANTINIKETAN 2, A CONDO
7 VIRGINIA LAND CORP

PB PG
ORB 4134 338-505
2 29



ASSESSMENT MAP
LAKE COUNTY, FLORIDA
COMPILED & DRAWN BY
HUNNICUTT & ASSOCIATES, INC.
ST. PETERSBURG, FLORIDA

SECTION 5 1/2 of 27
TOWNSHIP 19S
RANGE 26E
COMPILED & DRAWN, 1961
REVISION DATES
TRACING PRINT

SHEET NUMBER
3E
27/26
34/35

V 01032 RR MAP

AK 3808209

20' RR R/W
Triangle
Auto Poles
ORB 338/103
#7C on
RR map