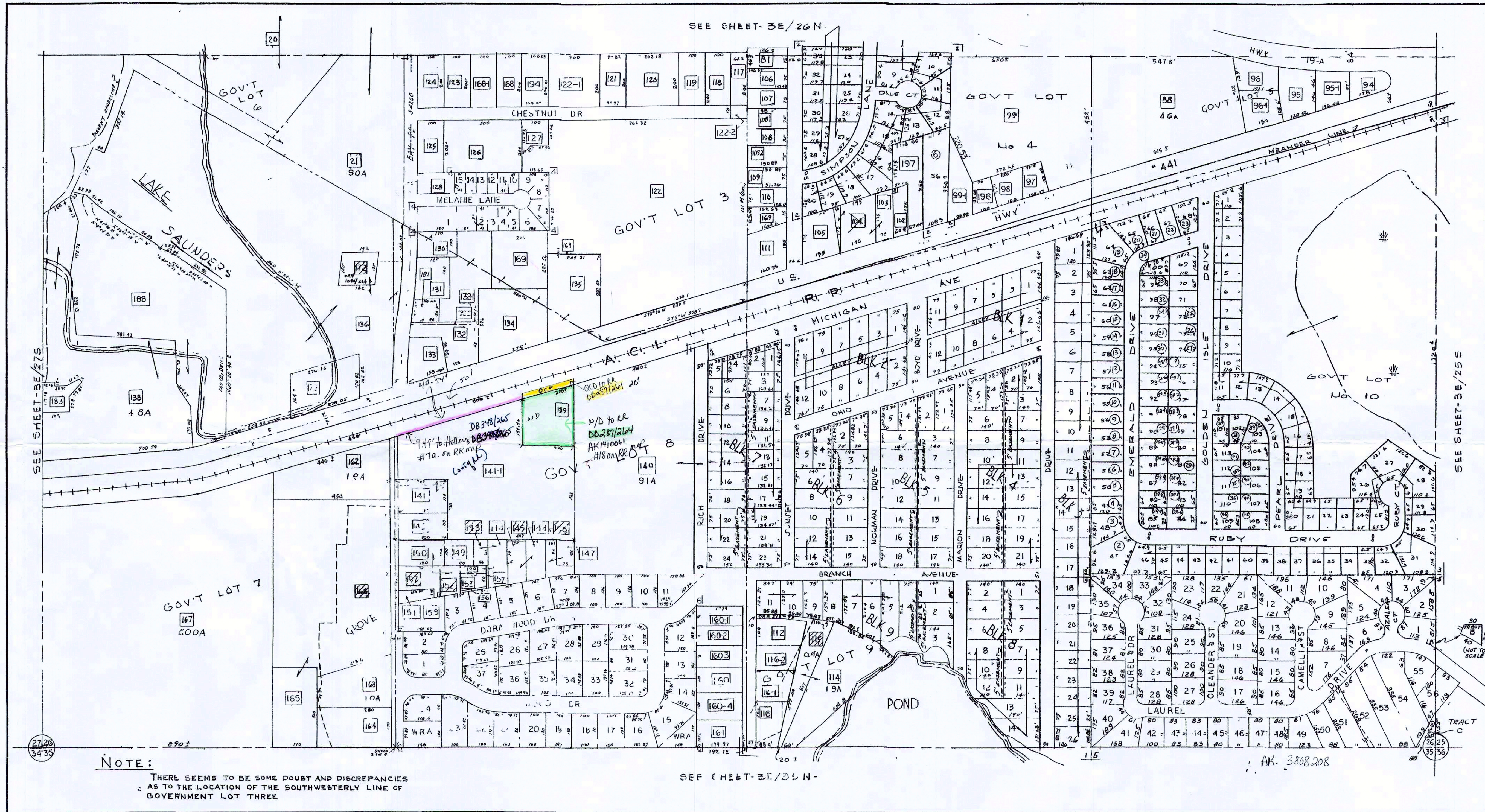


THIS MAP HAS BEEN COMPILED FROM THE MOST AUTHENTIC INFORMATION AVAILABLE AND NEITHER LAKE COUNTY NOR HUNNICUTT AND ASSOCIATES INC ASSUMES RESPONSIBILITY FOR ERRORS OR OMISSIONS CONTAINED HEREON

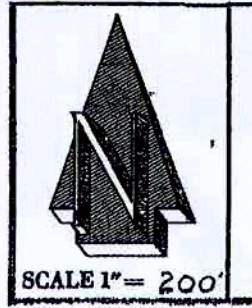
4-26-07  
1-24-08 U  
4-9-08 U  
1-14-09 U  
11-18-09 U  
10-29-10 U  
8-9-12 U  
12-12-12 U



| SUBDIVISION INDEX |                     |      |    |     |
|-------------------|---------------------|------|----|-----|
| NO                | NAME                | SEC. | PB | Pq. |
| 1                 | GOLDEN HEIGHTS      | 26 S | 13 | 31  |
| 2                 | GOLDEN HEIGHTS EST. | 15   | 42 |     |
| 3                 | GOLDEN ISLE         | 15   | 44 |     |
| 4                 | DUN - ROLLIN PARK   | 16   | 53 |     |

| NO | NAME                 | PB | PG |
|----|----------------------|----|----|
| 5  | LAKE DORA PINES      | 20 | 22 |
| 6  | PARK WOOD OF MT DORA | 29 | 21 |

NOTE  
100 NOT USED  
113 VOIDED



ASSESSMENT MAP  
**LAKE COUNTY, FLORIDA**  
COMPILED & DRAWN BY  
HUNNICUTT & ASSOCIATES, INC  
ST PETERSBURG, FLORIDA

SECTION SOUTH 1/2 26  
TOWNSHIP 19 S  
RANGE 26 E  
COMPILED & DRAWN, 1961  
REVISION DATES  
TRACING PRINT

SHEET NUMBER  
3E  
26S

V01032 RR MAP

AK 3808208

Saunders circle to 19A road 441 int