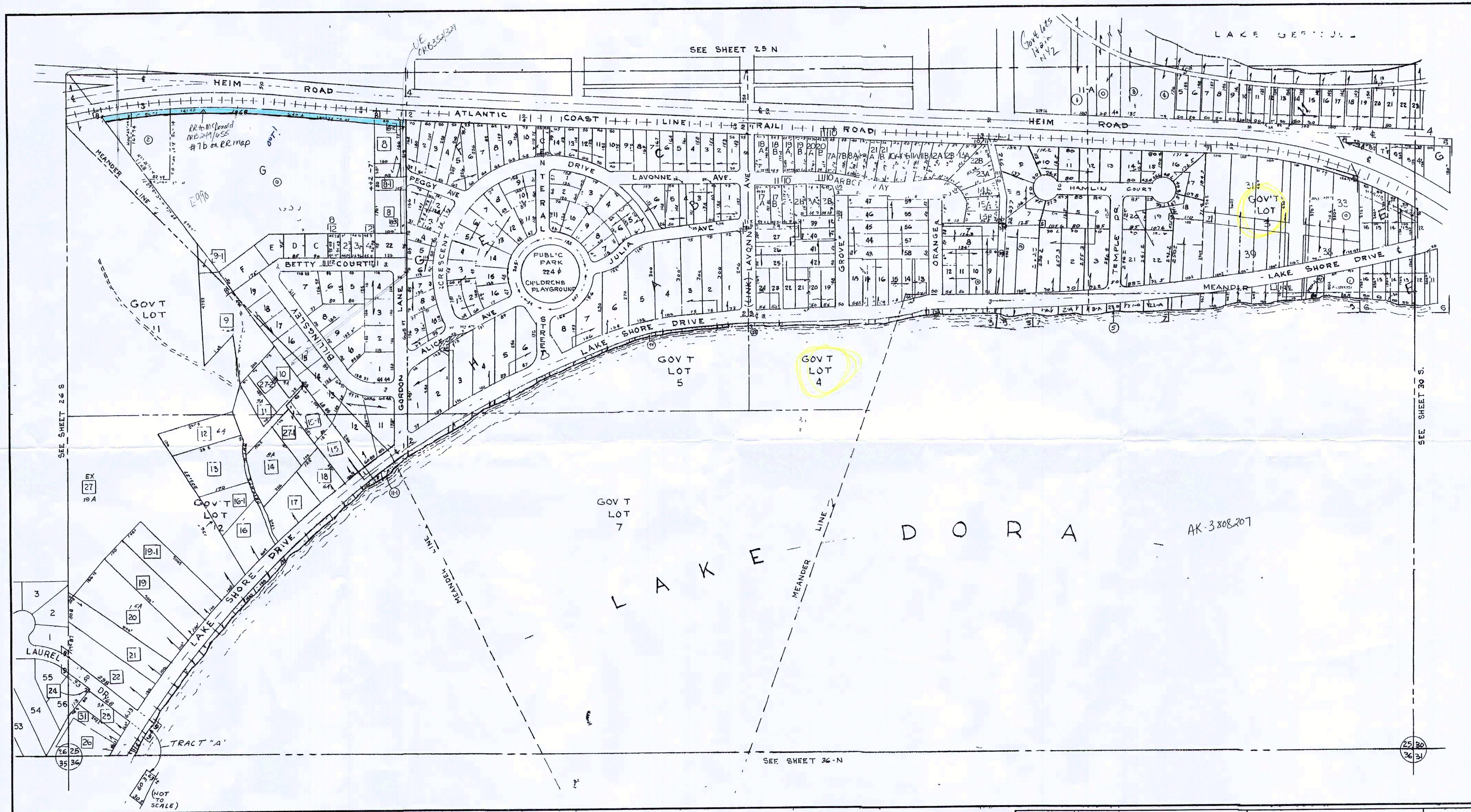


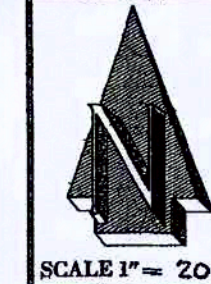
THIS MAP HAS BEEN COMPILED FROM THE MOST AUTHENTIC INFORMATION AVAILABLE AND NEITHER LAKE COUNTY NOR HUNNICUTT AND ASSOCIATES INC ASSUMES RESPONSIBILITY FOR ERRORS OR OMISSIONS CONTAINED HEREON

11-19-57
 4-25-58 J
 10-7-58 U
 1-10-59 LL
 7-21-61 S
 8-9-62 U
 9-2-62 L



SUBDIVISION INDEX

NO.	NAME	SEC	PB.	PG	NO.	NAME	SEC	PB.	PG
1	Mc DONALD TERRACE	25-S	13	45	5	CHAUTAUQUA CITY	25	1	13
2	DORA MANOR		6	3	6	CHAUTAUQUA PARK	25	2	50
3	DORA VISTA (part vacant)		6	6	7	DORA PARK ESTATES 25	15	31	12
4	SYLVAN SHORES	25-S & 25 N	9	56	8	BILLINGSLEY'S ACRES	17	15	15
					9	LAKE DORA PINES	20	22	22
					10	THE VINIYARDS	31	5	
					11	THE VINEYARDS PH2	43	7,8	
					12	MCDONALD RIDGE	64	60	



ASSESSMENT MAP
 LAKE COUNTY, FLORIDA
 COMPILED & DRAWN BY
 HUNNICUTT & ASSOCIATES, INC
 ST PETERSBURG, FLORIDA

SECTION SOUTH 1/2 OF 25
 TOWNSHIP 10 S
 RANGE 26 E
 COMPILED & DRAWN, 1961
 REVISION DATES
 TRACING PRINT

SHEET NUMBER
 3-E
 25-S

AK 380207
 int 194+ 06441 to int 194+ 06441