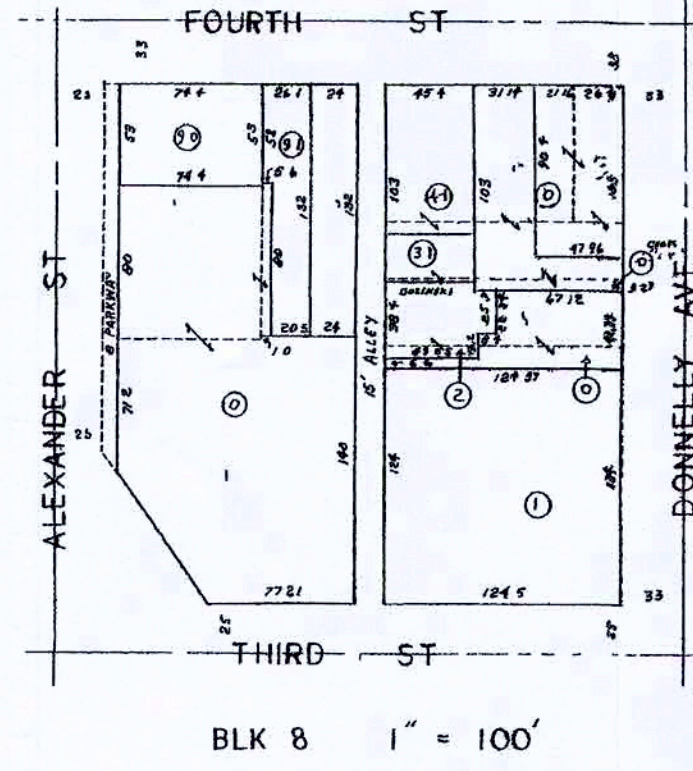
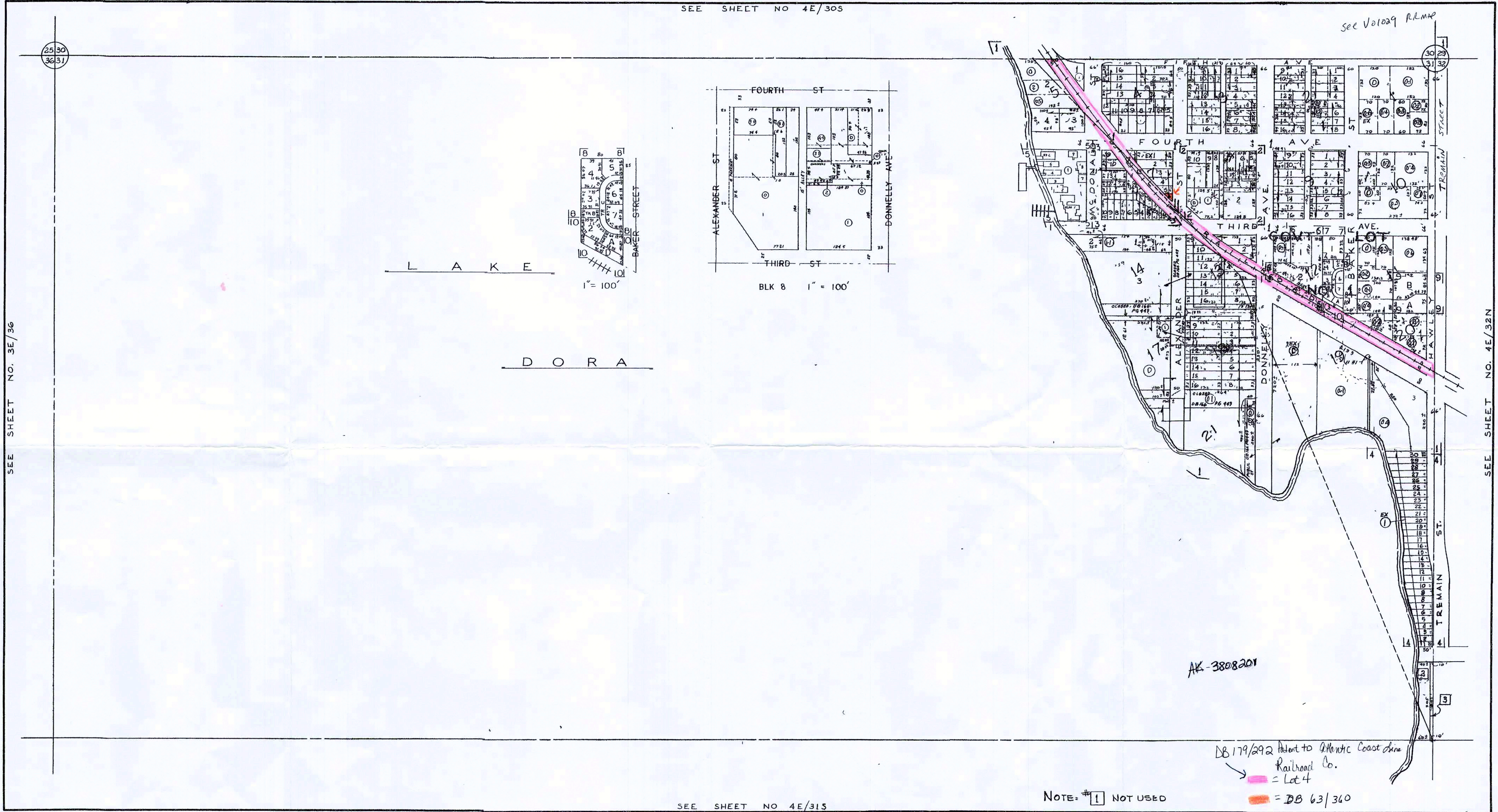


THIS MAP HAS BEEN COMPILED FROM THE MOST AUTHENTIC INFORMATION AVAILABLE AND NEITHER LAKE COUNTY NOR HUNNICUTT AND ASSOCIATES, INC ASSUMES RESPONSIBILITY FOR ERRORS OR OMISSIONS CONTAINED HEREON.

6-24-08 U
12-10-08 U
2-9-11 U
6-12-12 U
6-14-12 U
7-10-12 S

SEE SHEET NO 4E/30S

see Vol 029 PL MAP



SEE SHEET NO. 3E/36

SEE SHEET NO. 4E/32N

SEE SHEET NO 4E/31S

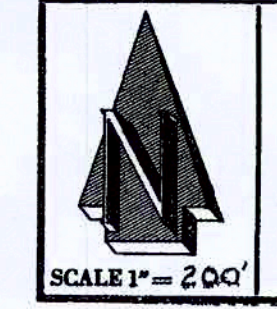
NOTE: #1 NOT USED

AK-3808201

DB 179/292 Patent to Atlantic Coast Line Railroad Co. = Lot 4

DB 63/360

SUBDIVISION INDEX MT DORA		PG.		PG.	
NO	NAME	PB.	PG.		
1	MT DORA	3	37,39,41,43	6 PARTIAL REPLAT BLK 12 MT DORA (SEE PLAT FOR DIMENSIONS)	38 40
2	RE-SUB BLK 8, MT DORA	10	59	7 OLDE COLONY SUBDIVISION	41 7
3	TOMPKINS' SUB BLKS 6 & 7, MT. DORA	5	7	8 OLDE COLONY GASLIGHT	42 86-87
4	TREMAIN ST. SHORE LOTS	10	51	9 LYDEN MINOR SUB	63 72
5	SHADOW HARBOR CONDO	ORB 860	2322	10 OLDE COLONY GASLIGHT PARTIAL REPLAT	64 92



ASSESSMENT MAP
LAKE COUNTY, FLORIDA
COMPILED & DRAWN BY
HUNNICUTT & ASSOCIATES, INC
ST PETERSBURG, FLORIDA

SECTION N 1/2 31
TOWNSHIP 19 S
RANGE 27 E
COMPILED & DRAWN, 1961
REVISION DATES
TRACING: PRINT

SHEET NUMBER
4E
31