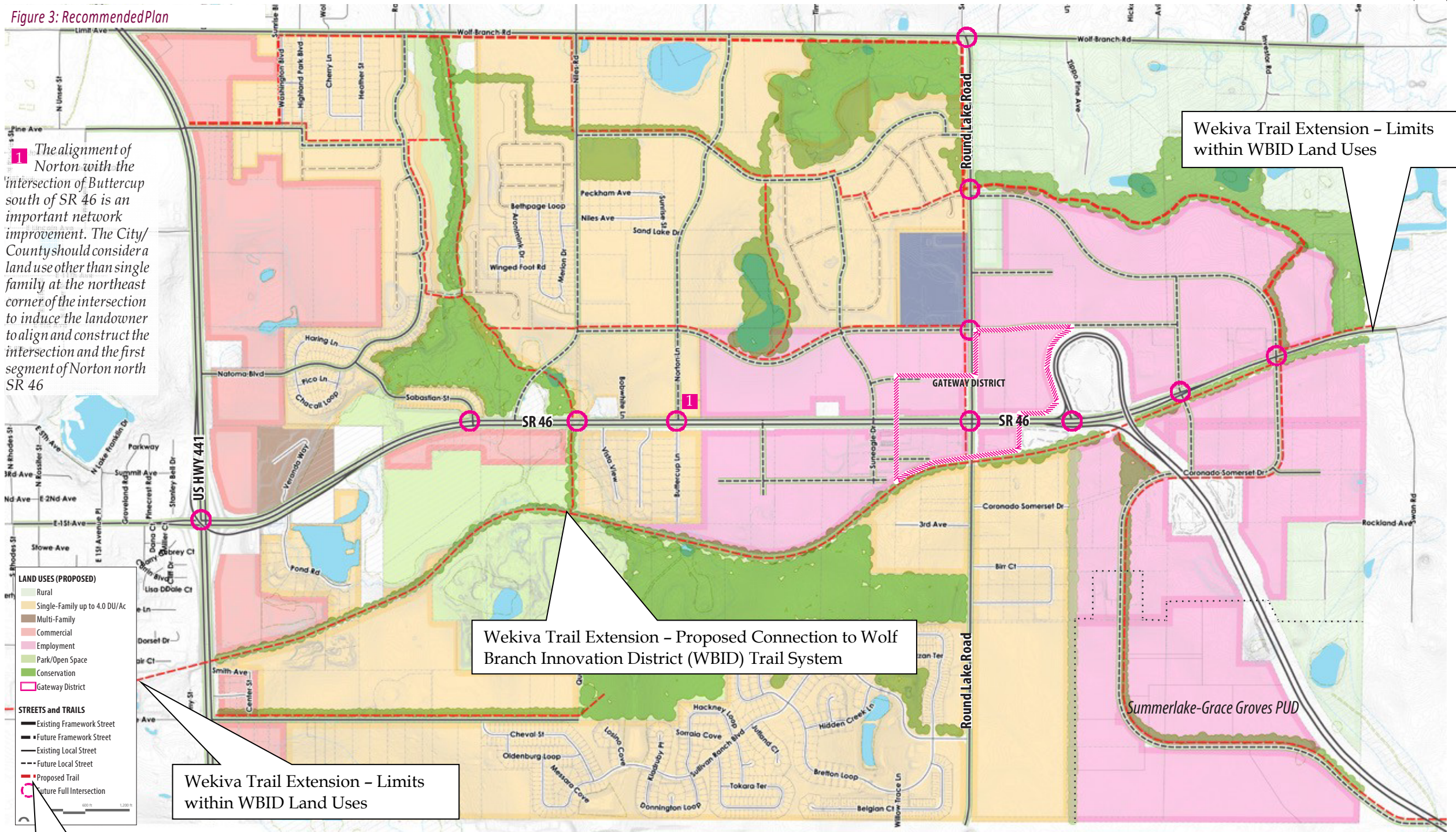


Appendix K

Wolf Branch Innovation District (WBID) Master Plan

Figure 3: Recommended Plan



1 The alignment of Norton with the intersection of Buttercup south of SR 46 is an important network improvement. The City/County should consider a land use other than single family at the northeast corner of the intersection to induce the landowner to align and construct the intersection and the first segment of Norton north SR 46

Wekiva Trail Extension - Limits within WBID Land Uses

Wekiva Trail Extension - Proposed Connection to Wolf Branch Innovation District (WBID) Trail System

Wekiva Trail Extension - Limits within WBID Land Uses

Proposed Trails