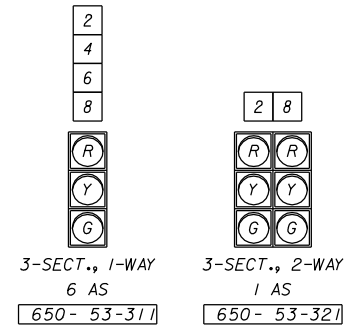
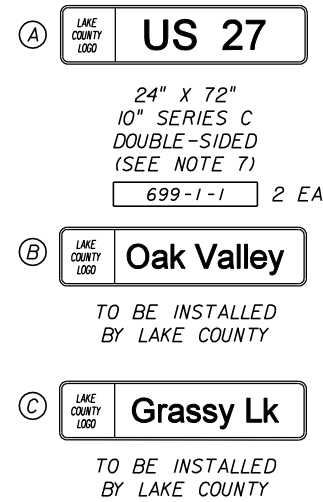


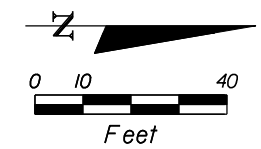
SIGNAL HEAD DETAILS



OVERHEAD SIGN DETAILS



| | |
|----------------------|-----------|
| FINANCIAL PROJECT ID | SHEET NO. |
| 2380022-5206 | 1 |



| TIMING FUNCTION | 1 | 2 | 3 | 4 | 5 | 6 | 7 | 8 |
|------------------|---|------|---|-----|---|------|---|-----|
| MOVEMENT NO. | | | | | | | | |
| MINIMUM GREEN | | 17 | | 5 | | 17 | | 5 |
| EXTENSION | | 3 | | 2.5 | | 3 | | 2.5 |
| MAXIMUM GREEN 1 | | 50 | | 25 | | 50 | | 25 |
| MAXIMUM GREEN 2 | | | | | | | | |
| YELLOW CLEARANCE | | 5 | | 4 | | 5 | | 3.5 |
| ALL RED | | 2 | | 1 | | 2 | | 1 |
| PEDESTRIAN WALK | | | | | | | | |
| PED. CLEARANCE | | | | | | | | |
| RECALL | | MIN | | | | MIN | | |
| DETECTOR | | LOCK | | NL | | LOCK | | NL |

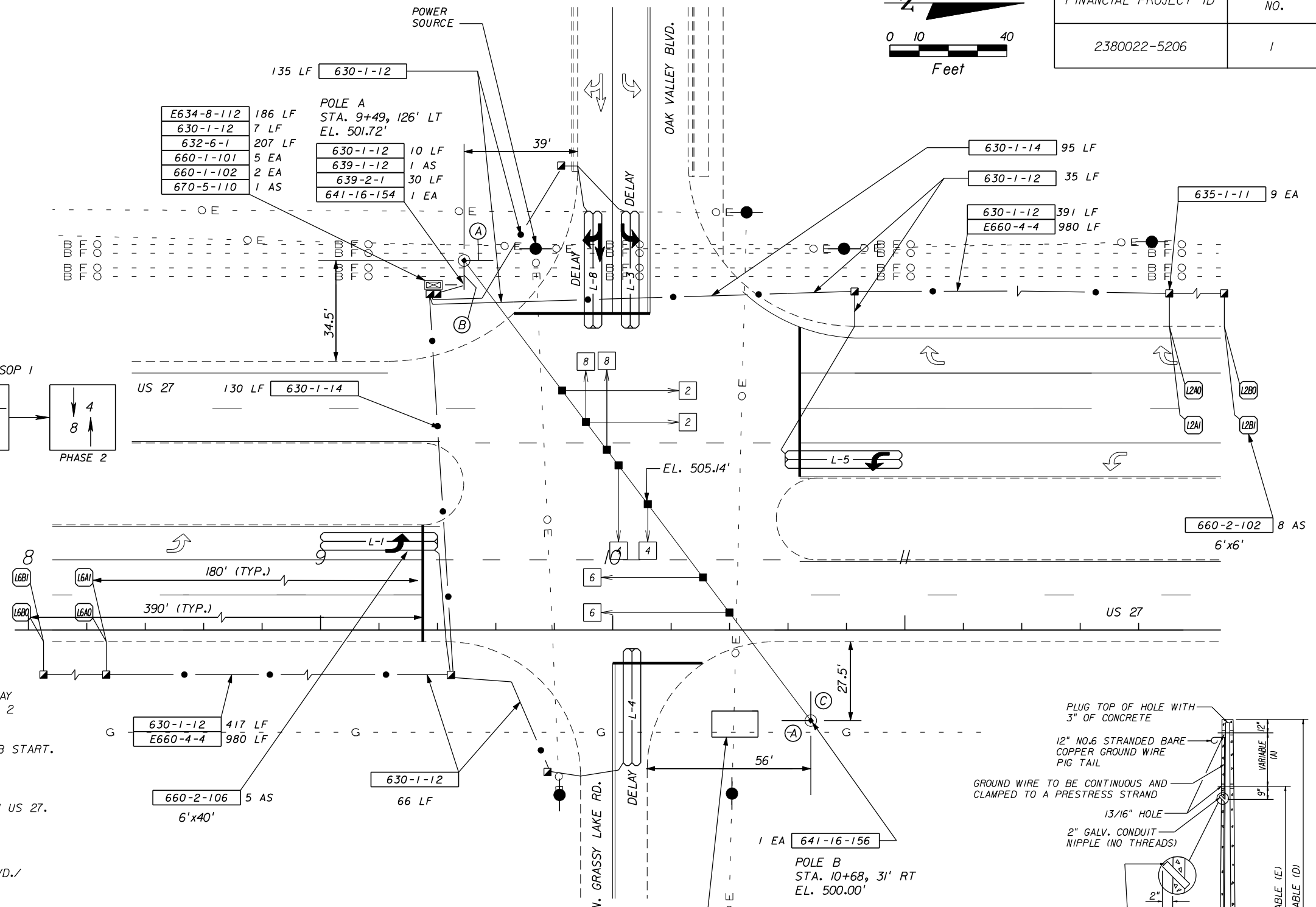
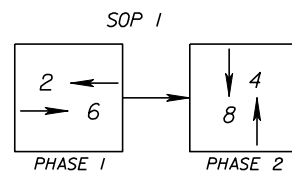
DURING FLASH OPERATIONS MOVEMENTS 2 AND 6 SHALL FLASH YELLOW. ALL OTHER MOVEMENTS SHALL FLASH RED.

PRE-CONSTRUCTION NOTES:

- CONTRACTOR TO NOTIFY THE FLORIDA DEPARTMENT OF TRANSPORTATION RAY MARLIN (386-943-5318) AND LAKE COUNTY FRED SCHNEIDER (352-253-4905) 2 FULL BUSINESS DAYS PRIOR TO BEGINNING CONSTRUCTION.
- CONTRACTOR TO SUBMIT CONCRETE MIX DESIGN TO ENGINEER PRIOR TO JOB START.

GENERAL NOTES:

- NO LANE CLOSURES FROM 7 AM TO 7 PM NORTHBOUND AND SOUTHBOUND ON US 27.
- ALL LANE CLOSURES TO BE APPROVED BY THE PROJECT ENGINEER.
- CONTRACTOR IS TO PLACE TURN ARROWS PER INDEX 17346.
- THE MAJOR STREET IS US 27 AND THE MINOR STREET IS OAK VALLEY BLVD./ N. GRASSY LAKE RD.
- THE SPEED LIMIT ON US 27 IS 55 MPH.
- ASSUMED ELEVATION OF 500.00' AT FOUNDATION OF POLE A.
- A 21" WIDE BLANK WHITE SPACE SHALL BE PROVIDED ON THE INTERNALLY ILLUMINATED STREET NAME SIGN TO ACCOMMODATE THE LAKE COUNTY LOGO, WHICH WILL BE INSTALLED BY COUNTY FORCES.
- THE LOCATION OF UTILITIES SHOWN ON THE PLANS ARE APPROXIMATE. PRIOR TO DIGGING, THE CONTRACTOR SHALL DETERMINE THE EXACT LOCATION OF ALL UTILITIES.
- THE BASELINE IS LOCATED ALONG THE NORTHBOUND EDGE OF TRAVEL WITH STATION 10+00 LOCATED ALONG THE DOUBLE-YELLOW CENTERLINE FOR GRASSY LAKE ROAD.



UTILITY CONTACTS:

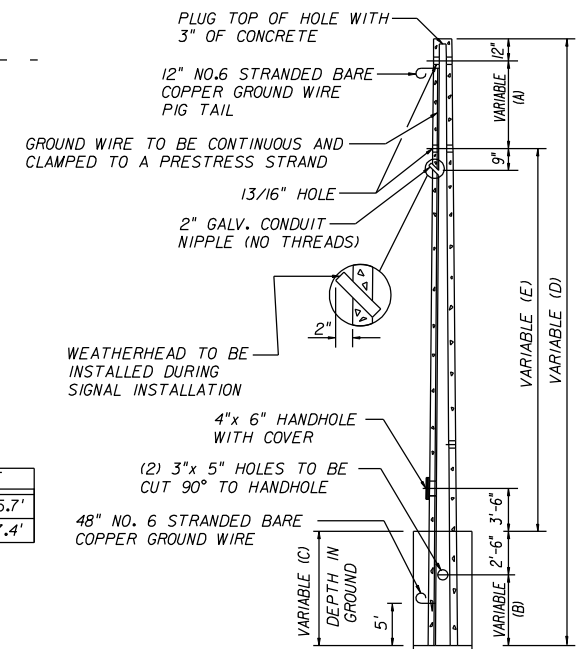
| | | |
|----------------------------|----------------|-----------------------|
| CITY OF MINNEOLA | MARK O'DELL | 352-394-3598 EXT. 11 |
| CITY OF LEESBURG | MISTY NOLAND | 352-435-5426 |
| BRIGHT HOUSE NETWORKS, LLC | AL STALEY | 352-330-2906 |
| PROGRESS ENERGY | MIKE STINGLE | 407-905-3327 |
| BROADWING | TREAVOR PEEVEY | 512-742-3805 |
| LAKE APOPKA NATURAL GAS | ALEX WOSGEIN | 407-656-2734 |
| COMCAST CABLEVISION | SCOTT OSEBOLD | 352-787-9601 EXT. 156 |
| SPRINT | GREG HAGER | 352-368-8763 |

POLE SCHEDULE

| POLE NO. | TYPE | A | B | C | D | E |
|----------|------|-------|-------|-------|-------|-------|
| A | VII | 13.0' | 11.8' | 14.3' | 54.0' | 25.7' |
| B | VII | 13.0' | 12.1' | 14.6' | 56.0' | 27.4' |

SPAN WIRE CABLES

CATENARY WIRE CABLE = 3/8"
MESSENGER WIRE CABLE = 1/2"



REVISIONS

| DESCRIPTION | DATE | BY | DESCRIPTION | DESIGNED BY | NAME | DATE | DRAWN BY | NAME | DATE |
|--|------|----|-------------|-------------|------|------|------------|------|------|
| | | | | DESIGNED BY | KCH | 4/06 | DRAWN BY | KCH | 4/06 |
| | | | | CHECKED BY | JSS | 4/06 | CHECKED BY | JSS | 4/06 |
| SUPERVISED BY: JAMES S. STROZ, JR., P.E. | | | | | | | | | |

STATE OF FLORIDA
DEPARTMENT OF TRANSPORTATION
ENGINEER OF RECORD:
JAMES S. STROZ, JR, PE
FL REGISTRATION NO. 56984

US 27 @ OAK VALLEY BLVD./N. GRASSY LAKE RD.
SECTION 11200 M.P. 18.636
LAKE COUNTY