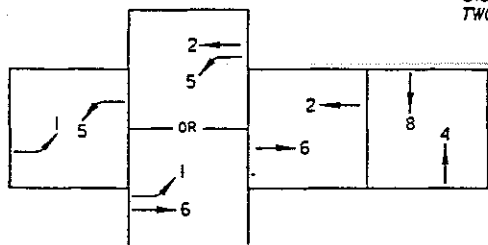


MOVEMENT DIAGRAM (SOP T)



CONTROLLER TIMINGS

MOVEMENTS	MIN. INT.	MAX. EXT.	MAX. GREEN 1	MAX. GREEN 2	YELLOW CLEAR	ALL RED	WALK	F.D.W.	RECALL	DET. FUNC.
1 + 5	5	2.5	20	-	4	2	-	-	-	NL
2 + 6	17	3	50	-	5	2	-	-	MIN	L
4 + 8	5	2.5	20	-	4	2	-	-	-	NL

CONTROLLER OPERATIONS:

1. THE MAJOR STREET IS US 27 AND THE MINOR STREET IS CR 561.
2. DURING FLASHING OPERATION, MOVEMENTS 2 & 6 SHALL FLASH YELLOW AND MOVEMENTS 1, 4, 5 AND 8 SHALL FLASH RED.

PRE-CONSTRUCTION NOTES:

1. CONTRACTOR IS TO NOTIFY THE PROJECT ENGINEER (RONNIE GROVE @ (386) 943-5307) AND LAKE COUNTY TRAFFIC ENGINEERING, FRED SCHNEIDER @ (352) 343-9655, 48 HOURS PRIOR TO BEGINNING CONSTRUCTION.
2. CONTRACTOR SHALL SUBMIT CLASS I CONCRETE DESIGN MIX TO THE PROJECT ENGINEER PRIOR TO BEGINNING CONSTRUCTION.
3. IN ORDER TO EXPEDITE ENERGIZING THE SIGNAL, CONTACT LAKE COUNTY TRAFFIC ENGINEERING, STEVE BOLLINGER (352) 742-1766 TO VERIFY THAT AN APPLICATION FOR POWER HAS BEEN MADE PRIOR TO BEGINNING CONSTRUCTION. IF NO APPLICATION HAS BEEN MADE, CONTACT THE FDOT PROJECT ENGINEER (RONNIE GROVE @ (386) 943-5307).
4. CONTRACTOR TO HAVE PRE-CONSTRUCTION MEETING WITH FDOT PROJECT ENGINEER (RONNIE GROVE 386-943-5307) AND FLORIDA POWER (SUE FREYSER 407-646-8364) WITHIN 14 DAYS OF RECEIVING WORK ORDER.

SIGNALIZATION NOTES:

1. US 27 - NO LANE CLOSURES SOUTH OF CR 561 7 AM TO 7 PM NORTHBOUND AND 7 AM TO 6 PM SOUTHBOUND. NO LANE CLOSURES NORTH OF CR 561 4 PM TO 6 PM NORTHBOUND AND 7 AM TO 9 AM SOUTHBOUND. ALL LANE CLOSURES TO BE APPROVED BY THE PROJECT ENGINEER.
2. SPEED LIMIT ON U.S. 27 IS 55 MPH.
3. ALL LOOP WIRE AND SIGNAL CABLE SHALL BE INSTALLED IN SEPARATE PULL BOXES.
4. ALL SIGNAL HEADS SHALL BE CAST ALUMINUM WITH GLASS LENSES.
5. DELAY DETECTORS TO BE SET TO 5 SECONDS.
6. CONTRACTOR TO INSURE THAT LOOP WINDOWS ARE LOCATED OFF THE RADII.
7. A VMS WITH THE FLASHING MESSAGE "SIGNAL AHEAD" WILL BE UTILIZED ON EACH APPROACH OF US 27 FOR 2 WEEKS AFTER SIGNAL TURN ON. PLACE SIGN APPROXIMATELY 2000' BEHIND STOP BAR.

RR 5.50

POLE LOCATION= STA. 32+71.4

20 LF	620-1-1
16 LF	639-2-1
13 EA	660-1-101
2 EA	660-1-102
1 AS	670-5-110

38 LF	630-1-12
1 EA	635-1-11

17 LF	630-1-12
65 LF	630-1-14
2 EA	635-1-11

399 LF	630-1-12
3 EA	635-1-11
4 AS	660-2-102
980 LF	E660-4-4

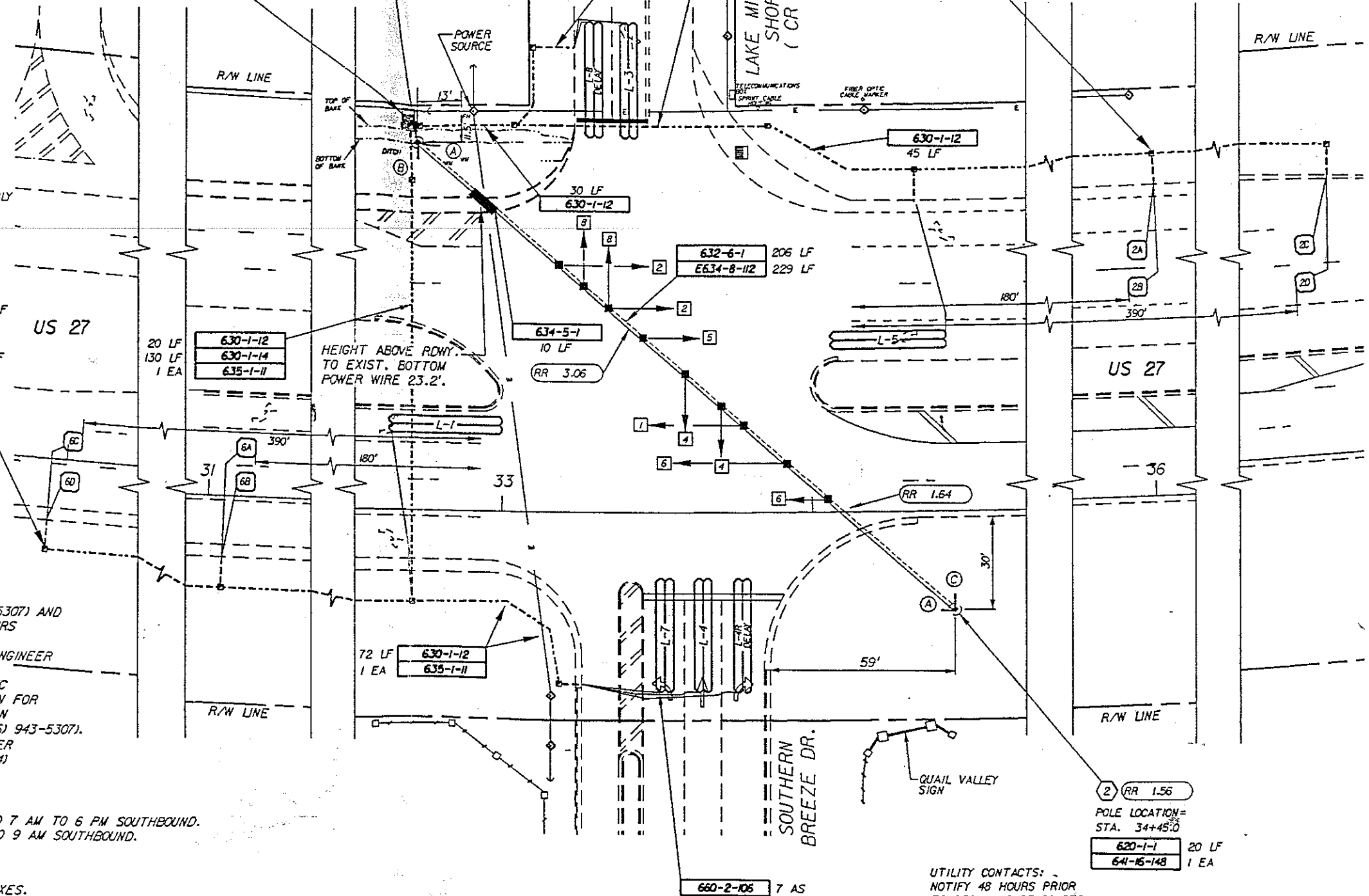
395 LF	630-1-12
3 EA	635-1-11
4 AS	660-2-102
980 LF	E660-4-4

20 LF	630-1-12
130 LF	630-1-14
1 EA	635-1-11

206 LF	632-6-1
229 LF	E634-8-112

10 LF	634-5-1
-------	---------

HEIGHT ABOVE RDWY. TO EXIST. BOTTOM POWER WIRE 23.2'



POLE SCHEDULE

POLE NO.	TYPE	A	B	C	D	E	PAY ITEM
1	VII	14.75	8.75	11.25	52	25	641-16-152
2	VII	14.75	8.75	11.25	48	21	641-16-148

SPAN CABLE SHALL BE 3/8" AND THE MESSENGER CABLE SHALL BE 7/16"

UTILITY CONTACTS:
NOTIFY 48 HOURS PRIOR TO BEGINNING OF CONSTRUCTION

ELECTRIC - FLORIDA POWER; SUE FREYSER (407) 646-8364
TELEPHONE - SPRINT-FLORIDA, INC.; ROBERT LOWERY (352) 326-1263
BROADWING, INC.; JERRY HAMMES (407) 859-7661
WATER - CITY OF MINNEOLA; FRANK MORRIS (352) 874-4460 CELL

SIGNALIZATION PLAN

REVISIONS				DESIGNED BY				CHECKED BY				SUPERVISED BY			
DATE	BY	DESCRIPTION	DATE	BY	DESCRIPTION	DATE	BY	DESCRIPTION	DATE	BY	DESCRIPTION	DATE	BY	DESCRIPTION	
4/02	VAG	SIDE STREET SIGN NAMES SWITCHED													



STATE OF FLORIDA
DEPARTMENT OF TRANSPORTATION

SR 25 (US 27) & CR 561
SEC 11200 MP 17.860 LAKE COUNTY