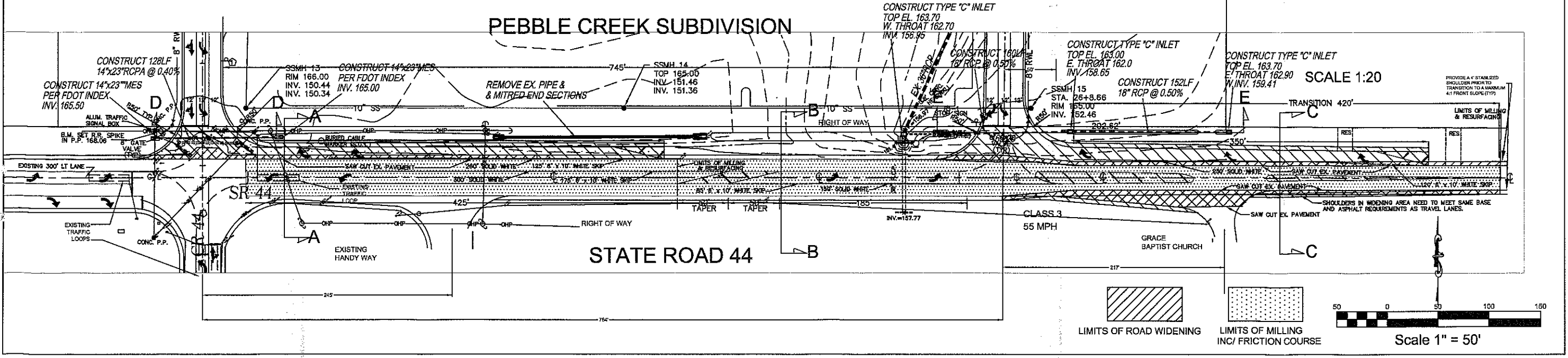
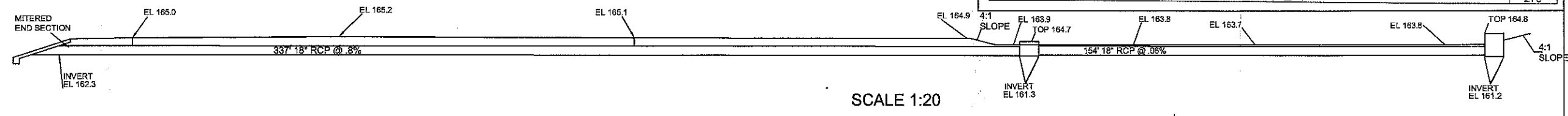
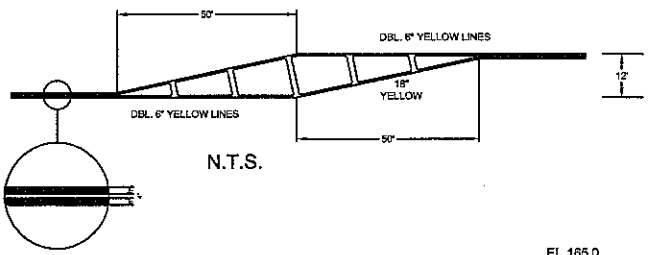


- NOTES:
1. ALL CONSTRUCTION METHODS AND MATERIALS WITHIN THE D.O.T. RIGHT-OF-WAY SHALL COMPLY WITH THE LATEST EDITIONS OF THE STANDARD SPECIFICATIONS FOR ROAD AND BRIDGE CONSTRUCTION, THE DESIGN STANDARDS AND THE UTILITY ACCOMMODATION MANUAL.
 2. ALL DISTURBED AREAS WILL BE REGRADED AND SODDED WITH ARGENTINA BAHIA SOD.
 3. MILL, REMOVE FRICTION COURSE AND RESURFACE AS SHOWN.
 4. REMOVE OLD 18\"/>



NOT VALID UNLESS SEALED
 FL. CHARTER # 8000
 NEAL B. HILER, P.E.
 REG. NO. 24541

Neal Hiler Engineering, Inc.
 Phone: (407) 948-5275
 Fax: (407) 354-0575
 E-mail: neahiler@gmail.com

1415 West S.R. 434
 Longwood, Florida 32750

REVISIONS:

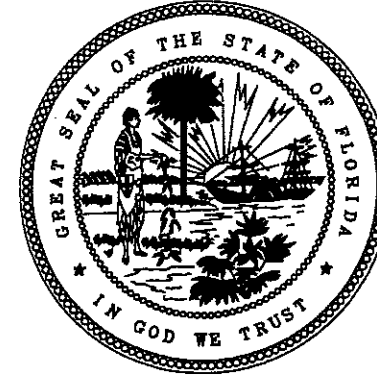
PEBBLE CREEK SUBDIVISION
 FDOT IMPROVEMENTS SR 44
 SECTION 11110 SR 44
 PERMIT 98A-592-0018

STATE
 CITY

DRAWN BY:
 JN/AGH
 DESIGN
 APPROVED BY:
 NEAL B. HILER, P.E.
 JOB NUMBER:
 99018
 FILENAME:
 99018FDOT
 DATE:
 03/07/00
 Date Rev.
 4/26/07
 SHEET
 3
 SCALE:
 1:50

THIS CONTRACT PLAN SET INCLUDES
SIGNAL MODIFICATION PLANS

LAKE COUNTY, FLORIDA



INDEX OF SIGNAL PLANS

SHEET NO.	SHEET DESCRIPTION
T-1	KEY SHEET / GENERAL NOTES / QUANTITIES
T-2	SIGNAL MODIFICATION PLAN SHEET

PLANS PREPARED IN ACCORDANCE WITH
FDOT STANDARDS - BOOKLET DATED JANUARY 2006.

GOVERNING SPECIFICATIONS; STATE OF FLORIDA,
DEPARTMENT OF TRANSPORTATION, STANDARD
SPECIFICATIONS DATED 2007 AND SUPPLEMENTS
THERE TO IF NOTED IN THE SPECIAL PROVISIONS
FOR THIS PROJECT.

ATTENTION IS DIRECTED TO THE FACT THAT
THESE PLANS MAY HAVE BEEN REDUCED IN
SIZE BY REPRODUCTION. THIS MUST BE
CONSIDERED WHEN OBTAINING SCALED DATA.

SIGNAL MODIFICATION PLANS

SR 44 (EAST ORANGE AVENUE) & CR 44-B

GENERAL NOTES

1) THE SIGNALIZATION PLANS HAVE BEEN PREPARED IN ACCORDANCE WITH THE FLORIDA DEPARTMENT OF TRANSPORTATION'S ROADWAY AND TRAFFIC DESIGN STANDARDS, DATED 2006. GOVERNING SPECIFICATIONS ARE THE STATE OF FLORIDA DEPARTMENT OF TRANSPORTATION SPECIFICATIONS, DATED 2007.

2) THESE PLANS REFLECT CONDITIONS KNOWN DURING PLAN DEVELOPMENT. IN THE EVENT ACTUAL PHYSICAL CONDITIONS PREVENT THE APPLICATION OR THE PROGRESSION OF ANY WORK SPECIFIED IN THESE PLANS, THE CONTRACTOR SHALL NOTIFY THE ENGINEER IMMEDIATELY AND PRIOR TO ANY FURTHER WORK ACTIVITY.

3) IT SHOULD BE NOTED THAT NO TEST BORINGS WERE MADE WHERE CONDUIT RUNS ARE TO BE INSTALLED BY DIRECTIONAL BORE JACKING OR TRENCHING. IT SHALL BE THE CONTRACTOR'S RESPONSIBILITY TO EXAMINE JOB SITE CONDITIONS BEFORE SUBMITTING BID PROPOSALS IN ACCORDANCE WITH SECTION 2-4 OF THE FDOT SPECIFICATIONS.

4) THE CONTRACTOR SHALL NOTIFY SUNSHINE ONE-CALL 1-800-432-4770 AT LEAST 48 HOURS IN ADVANCE OF ANY EXCAVATION OR ANY WORK WHICH WOULD OTHERWISE INTERFERE WITH ANY ABOVE-GROUND OR BELOW-GROUND UTILITIES. THE CONTRACTOR SHALL ALSO BE RESPONSIBLE FOR MAINTAINING CURRENT LOCATE TICKET THROUGHOUT THE DURATION OF THE WORK.

5) CONTRACTOR TO NOTIFY LAKE COUNTY AND THE FDOT 2 BUSINESS DAYS PRIOR TO BEGINNING CONSTRUCTION.

6) THE CONTRACTOR IS REQUIRED TO INSPECT THE INSTALLATION OF THE TRAFFIC SIGNALS IN ACCORDANCE WITH FDOT SPECIFICATION 105-5.10. THE CONTRACTOR SHALL COORDINATE THE FINAL ACCEPTANCE INSPECTION IN ACCORDANCE WITH FDOT SPECIFICATION 611-2.2 WITH THE ENGINEER AT LEAST 10 DAYS IN ADVANCE. OSCEOLA COUNTY AND RAY MARLIN (386) 943-5318 SHOULD ALSO BE CONTACTED TEN DAYS BEFORE THE INSPECTION IS TO BE PERFORMED SO THEY MAY BE PRESENT.

7) ALL ENDS OF CONDUITS IN PULL BOXES AND CABINETS SHALL BE SEALED WITH ELECTRICAL PUTTY AFTER WIRING IS COMPLETE.

8) ALL CONDUIT SHALL BE SCHEDULE 40, 2 INCH (5 CM) DIA. MINIMUM UNLESS OTHERWISE SPECIFIED IN PLANS, EXCEPT ELECTRICAL POWER SERVICE DUCT.

9) UNDER NO CIRCUMSTANCES SHALL ENERGIZED CABLE BE PLACED IN THE SAME CONDUIT OR PULL BOX AS LOOP LEAD-IN CABLE.

10) PULL BOXES AND COVERS SHALL BE FDOT APPROVED OF NON-METALLIC CONSTRUCTION WITH RECESSED COVER LOGO "TRAFFIC SIGNAL" OR "FIBER OPTIC" AS APPROPRIATE.

11) F TYPE LOOPS SHALL BE 40' LONG BY 6' WIDE AND EXTEND 5' BEYOND THE STOP BAR.

12) ALL NEW LOOP DETECTORS ARE TO BE INSTALLED IN THE CABINET PRIOR TO CUTTING EXISTING LOOPS.

13) ANY NEW OR EXISTING STRIPING CUT BECAUSE OF LOOP PLACEMENT SHALL BE RESTRIPE PRIOR TO ACCEPTANCE.

14) OVERHEAD BELDONS SHALL BE UV RATED.

15) DELAY TIMES SHALL BE SET TO 5 SECONDS.

THERE SHALL BE NO EASTBOUND AND WESTBOUND LANE CLOSURES BETWEEN THE HOURS OF 7:00 A.M. TO 7:00 P.M. A MAXIMUM OF ONE LANE CAN BE CLOSED IN EACH DIRECTION DURING ACTIVE WORK PERIODS. ALL LANES ARE TO BE OPEN DURING INACTIVE PERIODS.

MAINTENANCE OF TRAFFIC SHALL BE ESTABLISHED FOR TRAFFIC CONTROL THROUGH WORK ZONE IN ACCORDANCE WITH FDOT ROADWAY AND TRAFFIC DESIGN STANDARDS, INDEX #600 SERIES.

THE MAINTENANCE OF SIGNALS SHALL REMAIN THE RESPONSIBILITY OF THE CONTRACTOR, FROM THE TIME WORK BEGINS UNTIL FINAL ACCEPTANCE.

TABULATION OF QUANTITIES

BID ITEM NO.	DESCRIPTION	UNIT	SHEET #	
			T-2	
			ORIG.	FINAL
101-1	MOBILIZATION	LS	1	
102-1	MAINTENANCE OF TRAFFIC	LS	1	
630-1-12	CONDUIT - UNDERGROUND	LF	150	
635-1-11	PULL BOXES	EA	7	
660-1-101	INDUCTIVE LOOP DETECTOR	EA	1	
660-1-102	INDUCTIVE LOOP DETECTOR, TIME DELAYED	EA	1	
660-2-102	LOOP ASSEMBLY, TYPE 'B'	AS	4	
660-2-106	LOOP ASSEMBLY, TYPE 'F'	AS	6	
	FIELD LOCATE UTILITIES	LS	1	

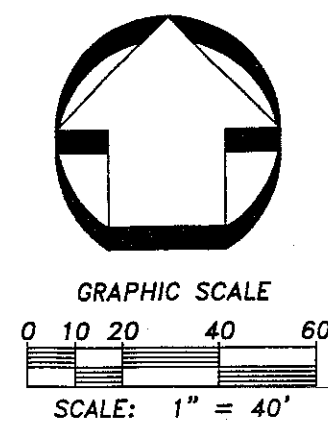
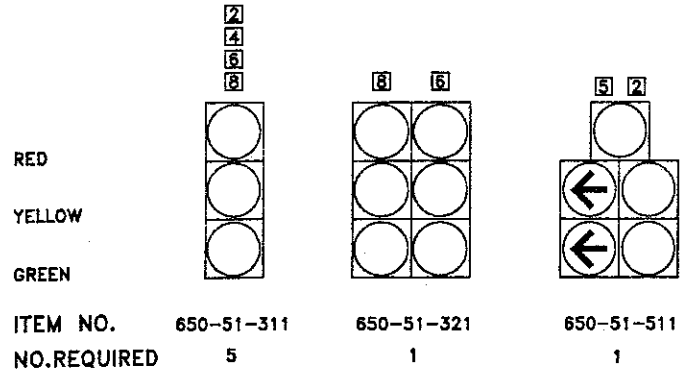
SCALE	DRAWN	DESIGNED	CHECKED
N/A	DF	DF	TD
DATE	REVISIONS		

Traffic Planning and Design, Inc.
535 Versailles Drive Maitland, FL 32751
Tel: (407) 828-9955 Fax: (407) 828-8860
E-Mail: turgt@tpdtraffic.com
Certificate of Authorization No. KB-3702



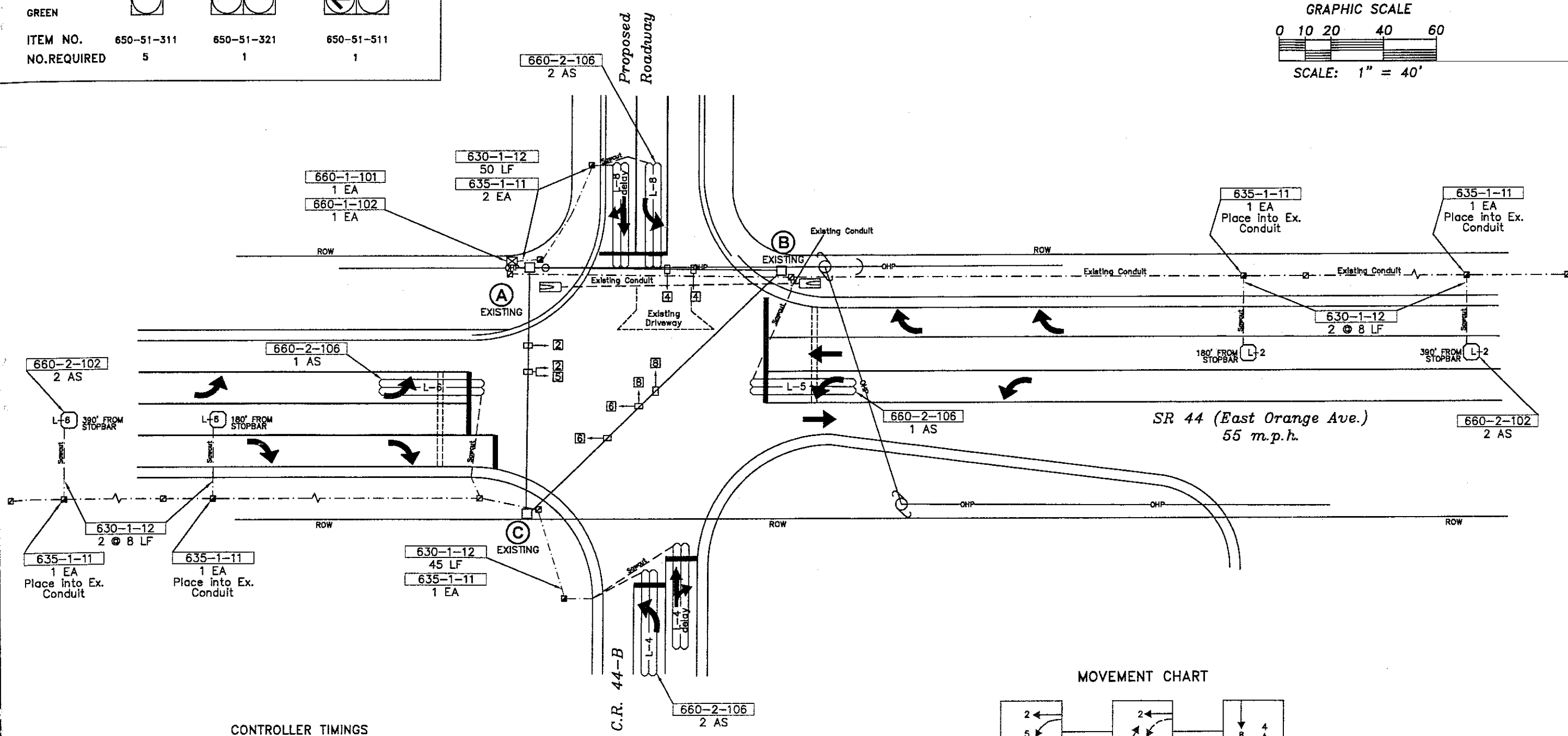
KEY SHEET / NOTES / QUANTITIES
SR 44 (EAST ORANGE AVENUE) &
CR 44-B
LAKE COUNTY, FLORIDA
SHEET T-1 OF T-2
TURCOT DERRICK
FLORIDA P.E. NO. 20400
TPD JOB# 3537 D1

SIGNAL HEAD DETAIL
(No Modification to Existing Signal Heads)



CHECKED	TD
DESIGNED	DF
DRAWN	DF
SCALE	1" = 40'
DATE	
REVISIONS	

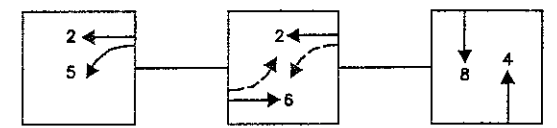
Traffic Planning and Design, Inc.
636 Versailles Drive Maitland, FL 32751
Tel: (407) 628-9955 Fax: (407) 628-8450
E-Mail: turgut@tpdradio.com
Certificate of Authorization No. EB-3702



CONTROLLER TIMINGS

MOVEMENT	MIN.	EXT.	MAX.	CLEAR	ALL RED	WALK	FDW.	RECALL	DETECTOR FUNCTION
2 AND 5	5	3	15	5	2	-	-	OFF	NL
2 AND 6	17	3	50	5	2	-	-	MIN.	LOCK
4 AND 8	5	3	30	4.3	1	-	-	OFF	NL

MOVEMENT CHART



SIGNAL MODIFICATION PLAN SHEET
SR 44 (EAST ORANGE AVENUE) &
CR 44-B
LAKE COUNTY, FLORIDA

SHEET T-2 OF T-2
TURGUT DERYVISH
FLORIDA P.E. No. 20400
TPD JOB# 3537 D1