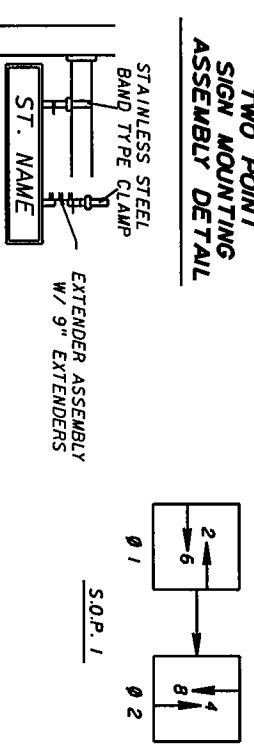


**POLE SCHEDULE**

POLE NO.	TYPE	A	B	C	D	E	PAY ITEM
1	N VI	10	14.5	17	54	26	641-15-154
2	N VI	10	12.5	15	50	24	641-15-150

SPAN CABLE SHALL BE 3/8" AND THE MESSENGER CABLE SHALL BE 1/8".

**TWO POINT SIGN MOUNTING ASSEMBLY DETAIL**



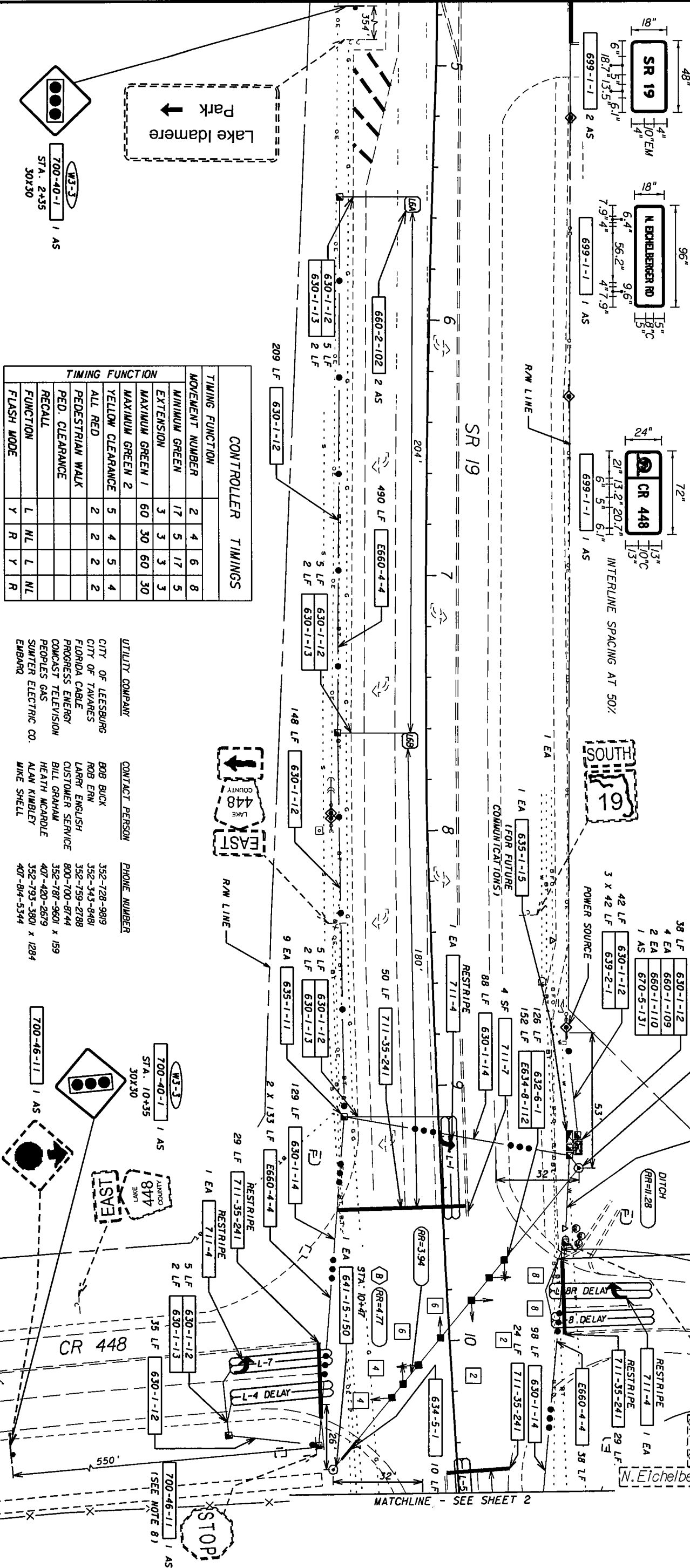
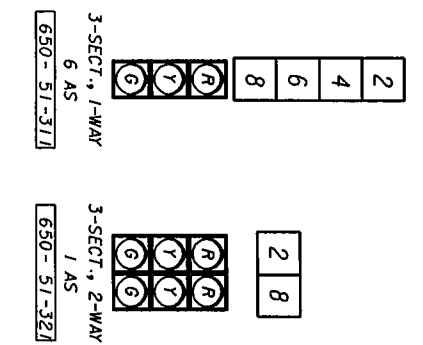
INTERLINE AND INTERWORD SPACING AT 50%:

**DETECTORS FOR LOOPS**

LOOP	NO. OF LOOPS	NO. OF NEW DETS.	DELAY TIME (SECI)
L-1	1	1	
L-5	1	1	
L-2A	1	1	
L-2B	1	1	
L-6A	1	1	
L-6B	1	1	
L-7	1	1	
L-8	1	1	2
L-4	1	1	5
L-8R	1	1	5

DELAY TIME IS INITIAL AND MAY REQUIRE FIELD ADJUSTING AS DIRECTED BY PROJECT ENGINEER.

INTERLINE SPACING AT 50%:

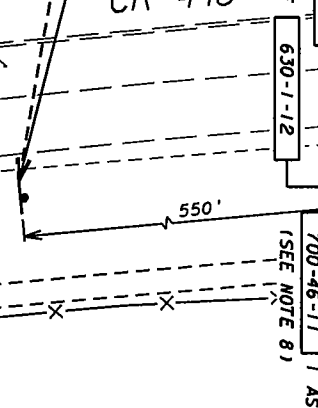
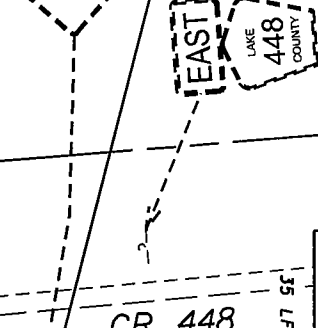
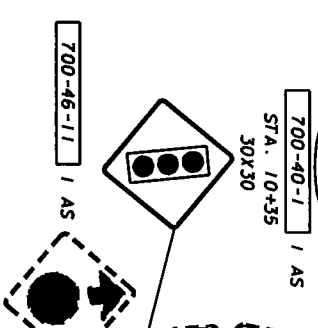


**CONTROLLER TIMINGS**

TIMING FUNCTION	MOVEMENT NUMBER	2	4	6	8
MINIMUM GREEN	17	5	17	5	
EXTENSION	3	3	3	3	
MAXIMUM GREEN 1	60	30	60	30	
MAXIMUM GREEN 2					
YELLOW CLEARANCE	5	4	5	4	
ALL RED	2	2	2	2	
PEDESTRIAN WALK					
PED. CLEARANCE					
RECALL					
FUNCTION	L	NL	L	NL	
FLASH MODE	Y	R	Y	R	

**UTILITY COMPANY CONTACT PERSON PHONE NUMBER**

UTILITY COMPANY	CONTACT PERSON	PHONE NUMBER
CITY OF LEESBURG	BOB BUICK	352-728-9819
CITY OF TAVARES	ROB ERN	352-343-8481
FLORIDA CABLE	LARRY ENGLISH	352-759-2788
PROGRESS ENERGY	CUSTOMER SERVICE	800-700-8744
COMCAST TELEVISION	BILL GRAHAM	352-787-9601 x 159
PEOPLES GAS	HEATH MCARDLE	407-420-2879
SUNTER ELECTRIC CO.	ALAN KIMBLEY	352-793-3801 x 1284
EMBARR	MIKE SHELL	407-814-5344



**REVISIONS**

DATE	BY	DESCRIPTION

**STATE OF FLORIDA DEPARTMENT OF TRANSPORTATION**

SR 19 @ CR 448  
SEC 11080 MP 3.280

**ENGINEERS PLANNERS SURVEYORS**

MICHAEL L. CORNEJO, P.E. #47734  
METTRIC ENGINEERING, INC.  
2289 LEE ROAD, SUITE 200  
WINTER PARK, FLORIDA 32789  
TEL. (407) 644-1898  
FAX. (407) 644-2376  
FLORIDA CERT. NO. EB-0002284

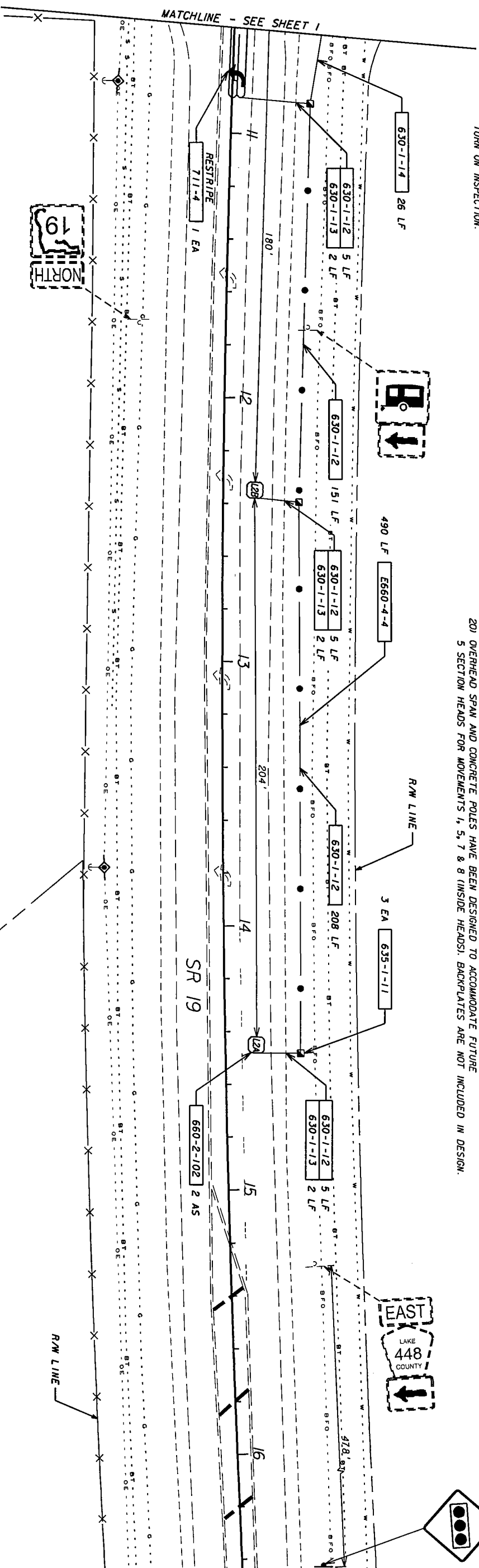
ROAD NO. SR 19  
COUNTY LAKE  
FINANCIAL PROJECT ID 238002-1-52-XX

SHEET NO. 1

**PRE CONSTRUCTION NOTES**

- 1) CONTRACTOR TO NOTIFY THE PROJECT ENGINEER (JIM STROZ @ (386) 943-5312) AND LAKE COUNTY (STEVE BOLLINGER @ (352) 742-1766) 2 BUSINESS DAYS PRIOR TO BEGINNING CONSTRUCTION.
  - 2) IN ORDER TO EXPEDITE ENERGIZING THE SIGNAL, CONTACT LAKE COUNTY (STEVE BOLLINGER @ (352) 742-1766) TO VERIFY AN APPLICATION FOR POWER HAS BEEN MADE PRIOR TO BEGINNING CONSTRUCTION. IF NO APPLICATION HAS BEEN MADE, CONTACT THE FDOT PROJECT ENGINEER (JIM STROZ @ (386) 943-5312).
- GENERAL NOTES**
- 1) TRAFFIC CONTROL SHALL BE PERFORMED IN ACCORDANCE WITH FLORIDA DEPARTMENT OF TRANSPORTATION DESIGN STANDARDS INDICES 600 & 67 AS APPLICABLE. EXISTING SPEED LIMITS SHALL BE MAINTAINED DURING CONSTRUCTION.
  - 2) THE CONTRACTOR SHALL HAND DIG THE FIRST 4' AT EACH POLE LOCATION TO VERIFY NO UTILITY CONFLICTS.
  - 3) THE CONTRACTOR IS REQUIRED TO INSPECT THE INSTALLATION OF THE TRAFFIC SIGNALS IN ACCORDANCE WITH FDOT SPECIFICATION 105-5.10. THE CONTRACTOR SHALL COORDINATE THE FINAL ACCEPTANCE INSPECTION IN ADVANCE WITH FDOT SPECIFICATION 61-2.2 WITH THE ENGINEER AT LEAST 10 DAYS IN ADVANCE. LAKE COUNTY AND RAY MARLIN (386-943-5318) SHALL ALSO BE CONTACTED 10 DAYS BEFORE THE INSPECTION IS TO BE PERFORMED SO THEY MAY BE PRESENT.
  - 4) NO LANE CLOSURES ARE ALLOWED ON SR 19 IN THE NORTH OR SOUTHBOUND DIRECTIONS FROM 7 AM TO 9 AM AND 3 PM TO 6 PM.
  - 5) TRAFFIC SIGNAL SHALL FLASH FOR NO LESS THAN 7 DAYS AND NO MORE THAN 14 DAYS PRIOR TO TURN ON INSPECTION.

- 6) THE CONTRACTOR SHALL VERIFY THE POWER SERVICE REQUIREMENTS WITH LAKE COUNTY (STEVE BOLLINGER @ (352) 742-1766).
- 7) SPEED LIMIT ON SR 19 - 55 MPH.
- 8) STOP SIGN ASSEMBLIES TO BE REMOVED AT THE SAME TIME THE SIGNAL IS SWITCHED INTO FULL OPERATION. ONLY THE STOP SIGN PANEL IS TO BE REMOVED ON THE WEST APPROACH.
- 9) PULL BOXES AND COVERS SHALL BE FDOT APPROVED OF NON-METALLIC CONSTRUCTION WITH RECESSED COVER LOGO "TRAFFIC SIGNAL" OR "FDOT FIBER OPTICS" AS APPROPRIATE.
- 10) THE FAR ADVANCE TYPE "B" LOOPS ARE TO BE WIRED TO THE SYSTEM PANEL AND SHALL FUNCTION AS BOTH SYSTEM LOOPS AND ADVANCED LOOPS. ADDITIONALLY, EACH "B" LOOP SHALL HAVE SEPARATE DETECTOR CHANNEL.
- 11) SIGNAL CABLE AND LOOP WIRES TO BE IN A SEPARATE PULL BOXES.
- 12) CONTRACTOR IS TO ENSURE THAT LOOP WINDOWS ARE LOCATED OFF THE RADIUS.
- 13) ALL SIGNAL HEADS SHALL BE LED.
- 14) ALL SIGNAL DISPLAYS SHALL BE CAST ALUMINUM.
- 15) DELAY DETECTORS SHALL BE SET TO 5 SECONDS, EXCEPT L-8, WHICH SHALL BE SET AT 2 SECONDS.
- 16) ALL CANTILEVER SUPPORTED SIGNS ARE TO BE FREE SWINGING PER THE DETAIL.
- 17) CONTRACTOR IS NOT TO USE JONES PLUGS.
- 18) THE OVERHEAD SIGNS ARE TO BE INSTALLED 1' BELOW THE MESSENGER CABLE.
- 19) VARIABLE MESSAGE SIGNS ARE TO BE IN PLACE 500' BEFORE THE STOP BAR WITH THE MESSAGE "CAUTION AHEAD" & "NEW TRAFFIC SIGNAL" FOR 2 WEEKS BEFORE AND 2 WEEKS AFTER THE SIGNAL INSTALLATION.
- 20) OVERHEAD SPAN AND CONCRETE POLES HAVE BEEN DESIGNED TO ACCOMMODATE FUTURE 5 SECTION HEADS FOR MOVEMENTS 1, 5, 7 & 8 (INSIDE HEADS). BACKPLAYERS ARE NOT INCLUDED IN DESIGN.



DATE	BY	DESCRIPTION	DATE	BY	DESCRIPTION
REVISIONS					

MICHAEL L. CORNEJO, P.E. # 47734 METRIC ENGINEERING, INC. 2269 LEE ROAD, SUITE 200 WINTER PARK, FLORIDA 32789 TEL. (407) 644-1898 FAX. (407) 644-2376 FLORIDA CERT. NO. EB-0002294		STATE OF FLORIDA DEPARTMENT OF TRANSPORTATION ROAD NO. SR 19 COUNTY LAKE FINANCIAL PROJECT ID 238002-1-52-XX	SR 19 @ CR 448 SEC 11080 MP. 3.280	SHEET NO. 2
--	--	--	---------------------------------------	-------------